

2008

ENDURA **MAX**

  
**GLADIATOR**  
by ENDURA MAX







All the furniture in the Gladiator is Comfort Plus Furniture with true innerspring technology.



The Gladiator galley features Corion countertops, a built in water purification system in the faucet and a 30 lb. ball barring extension allowing the kitchen to be fully functional.

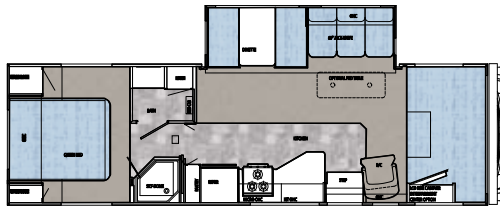
The Gladiator offers a overhead bed area with LCD tv for an extra sleeping/entertainment area.



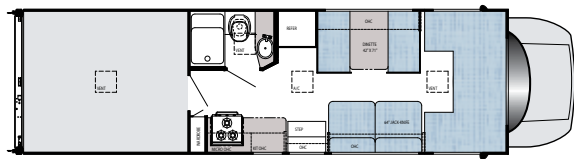
  
**GLADIATOR**  
by ENDURA MAX

# ENDURAX

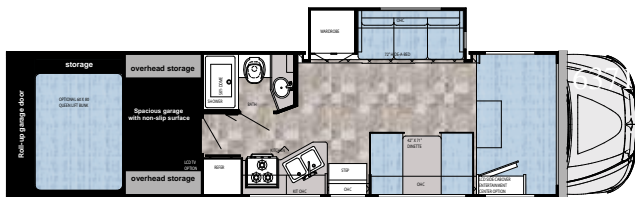
New  
Floorplan  
Coming In  
June 2008!



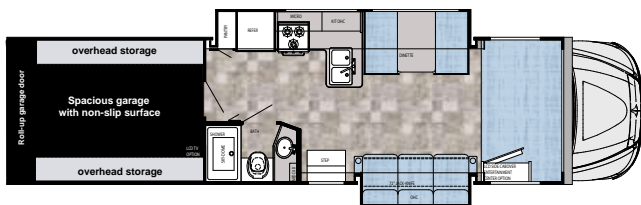
6316



6318



6370



6371

## Brand Specifications

| Gladiator                        | 6316        | 6318        | 6370        | 6371        |
|----------------------------------|-------------|-------------|-------------|-------------|
| Overall Length Apx.              | 31'-6"      | 31'-8"      | 37'-0"      | 36'-9"      |
| Overall Ext. Height Apx. with AC | 11'-3"      | 11'-3"      | 11'-3"      | 12'-7"      |
| Net Carrying Capacity            | 2,600       | 2,600       | 2,600       | 3,600       |
| Approximate Hitch Weight         | 10,000 lbs. | 10,000 lbs. | 10,000 lbs. | 15,000 lbs. |
| Exterior Width                   | 101"        | 101"        | 101"        | 101"        |
| Black Tank                       | 52 Gal.     | 52 Gal.     | 52 Gal.     | 52 Gal.     |
| Gray Tank                        | 52 Gal.     | 52 Gal.     | 52 Gal.     | 52 Gal.     |
| Fresh Tank                       | 85 Gal.     | 85 Gal.     | 85 Gal.     | 85 Gal.     |
| Furnace                          | 30,000 BTU  | 30,000 BTU  | 30,000 BTU  | 30,000 BTU  |

All Weights Shown are in Dry Condition, without options or fluids.

Please add for additional options and features. Consult the weight tag inside kitchen cabinet and your tow vehicle owners manual for more information.

Stone

Racing Red



FLOOR COVERING

accent



FLOOR COVERING

accent



**Full Line Toy-Hauler  
Manufacturer**

**ENDURAMAX**



**ENDURAMAX LLC WAS FOUNDED IN 2006 AS AN EXCLUSIVE MANUFACTURER OF QUALITY TOYHAULING PRODUCTS. BECAUSE ENDURAMAX IS A PRIVATELY HELD WE ARE ABLE TO CONSTRUCT AND CHANGE OUR PRODUCT TO MEET MARKET DEMANDS. WE PROMISE YOU THAT OUR PRODUCTS ARE MANUFACTURED WITH THE UTMOST CARE AND WILL STAND THE TEST OF TIME SO THAT YOUR PURCHASE WILL PAY YOU BACK WITH PLENTY OF HASSLE-FREE GOOD TIMES. WE DELIVER THE MOST VALUE AND QUALITY AT THE BEST PRICE.**

**2 YEAR  
TRANSFERABLE  
WARRANTY**

**ON STRUCTURAL COMPONENTS\***

one year total use warranty under normal use against defects in material and/or workmanship in construction and original components.

*\*For purposes of this warranty, "Structural components" shall be limited to the structure of the side walls, front and back walls, roof and floor. See the official written Enduramax LLC Limited Warranty for details.*

*Take it to the Max* **At Your Local Dealer!**

**ENDURAMAXRV.com**

**1-800-213-8151**

For more information and available options, contact your local EnduraMax dealer, [www.EnduraMaxRV.com](http://www.EnduraMaxRV.com) or EnduraMax LLC. EnduraMax LLC, reserves the right to make changes in prices, colors, materials, components and specifications and to discontinue models at any time without notice or obligation. EnduraMax LLC, assumes no responsibility for any error in type or print reproduction of specifications or floorplans in this brochure. Photographs may show equipment or items that are optional and are not included in the purchase price of the coach. Test drive and review a current model at your nearest EnduraMax dealer. © 2006 EnduraMax LLC, Goshen, Indiana U.S.A.