



# Cottage

By Cedar Creek

Wide Body Travel Trailer



The Smart Choice for the Experienced RV'er





Enjoy the comfort of your very own Cottage at your favorite vacation spot. The Cedar Creek Cottage offers the convenience of a travel trailer with the amenities of a fine vacation home. The **Wide Body Design** and **Eight Feet of Interior Height** provide roomy comfort for family and guests. Whether at the lake, in the mountains, or your favorite campground, your Cottage welcomes you with upscale features created to pamper and appease.





**A**

**A** The quality Dimplex® fireplace is the focal point of this gracious living room while La-Z-Boy® microfiber recliners provide cozy seating. Lots of natural lighting emanates from the expansive windows which are the largest in the industry.



**B**

**B** The 40" Jensen television is designed with Mother Nature in mind. All of their electronics are expected to operate in temperature extremes. Jensen internal components are coated to protect against moisture, heat and cold. Add the standard fireplace and 110v stereo with surround sound, and you have



**C**

a cozy retreat designed for outdoor living.

**C** The allure of space and luxury are apparent in this front entertainment model. Comfortable residential style furniture and the beauty of solid cherry cabinetry make this a hit with all the family and friends.





**A**



**B**



**C**



**D**

- A** The freestanding dinette table is surrounded with large windows for pleasurable dining with a view.
- B** This efficient center island kitchen has everything you need conveniently arranged for quick and easy access.
- C** Exquisite solid cherry wood cabinetry throughout the interior provides an abundance of beautiful storage space. All Cedar Creek Cottage kitchens feature True Corian® countertops.
- D** This hoosier cabinet includes a ceiling-to-floor pantry along with a 2' extendable countertop for extra workspace (Available in 40CRL only).



## DÉCOR OPTIONS

### Our Huge, 102" Wide, Family Style Kitchens include:

- Deep, full extension drawers
- Deep stainless steel sinks
- Hoosier cabinets with pull-out Corian® serving extension
- Freestanding table with leaf extension
- 4 dinette chairs
- 18 cu. ft. residential refrigerator with icemaker
- 30" residential microwave
- Serving islands to create the perfect space for gathering of family and friends.



Living Area

#### COGNAC TAUPÉ

##### Bedroom



#### CHAMPAGNE



Living Area

#### SATIN SPRUCE

##### Bedroom



Living Area



#### BISCOTTI



Living Area



A



Model	40CFK	40CRL	40CB2	40CFL	40CFE
Exterior Length	40'4"	41'4"	39'6"	39'6"	41'10"
Exterior Height w/Air Cond.	12'10"	12'10"	12'10"	12'10"	12'10"
Exterior Width	102"	102"	102"	102"	102"
Bedroom Interior Height	8'	8'	8'	8'	8'
Hitch Weight	1732	1135	1456	1371	1755
Axle Dry Weight	9420	9340	8852	8620	9265
Unloaded Vehicle Weight	11,152	10,416	10,308	9991	11,020
GVWR	13,732	13,135	13,456	13,371	13,755
Gross Cargo Capacity	2580	2710	3148	3380	4490
Dual Axles (2)	6000# Straight	6000# Straight	6000# Straight	6000# Straight	6000# Straight
Wheel Size	16 x 6	16 x 6	16 x 6	16 x 6	16 x 6
Tire Size	LT235/85R/16E	LT235/85R/16E	LT235/85R/16E	LT235/85R/16E	ST235/80R/16E
Awning Size	18'	18'	18'	18'	18'
Furnace Size	42 BTU	42 BTU	42 BTU	42 BTU	42 BTU
Water Heater Size	20	20	20	20	20
Demand Fresh Water Cap.	76	76	76	76	76
Black and Grey Water Cap.	40 / 40 / 40	40 / 40 / 40	40 / 40 / 40	40 / 40 / 40	40 / 40 / 40
Sleeping Capacity	6	6	6	6	TBD

All Weights listed above are base weights. Weight capacities +/- 5%. NOTE: Model number of any particular unit does not necessarily reflect the overall length of the unit itself.

**All Aluminum  
Super Structure**

**ROOF**  
R-VALUE=38

**SIDE WALLS**  
R-VALUE=9

**FLOORS**  
R-VALUE=38

Emergency Roadside  
Assistance Service  
Administered by  
Coach-Net®. Ask  
your dealer for more  
information.



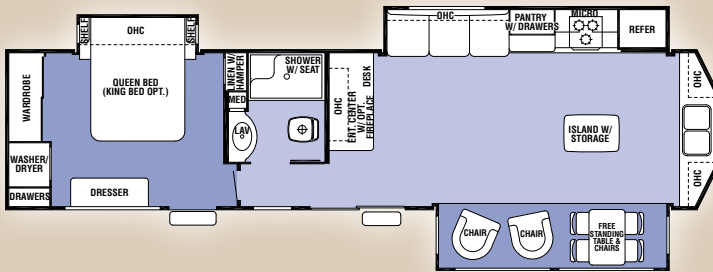
**A** The bedroom slide accommodates a queen size bed that includes a deluxe Serta® mattress and large under bed storage area. The mirrored wardrobe, residential dresser, and lots of deep overhead cabinets provide plenty of personal storage space. An optional king sized bed is available in all models.

**B** The comforts of home are found in the roomy bathroom. The one-piece fiberglass shower includes a molded seat, shower door, and overhead skylight.

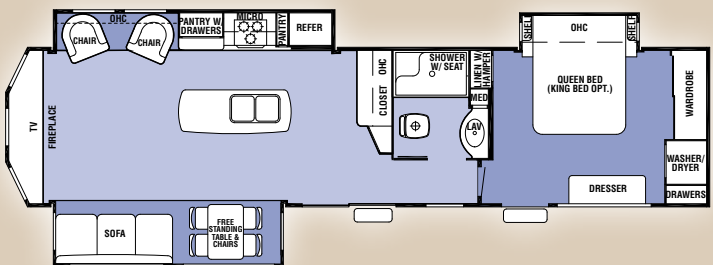


**B**

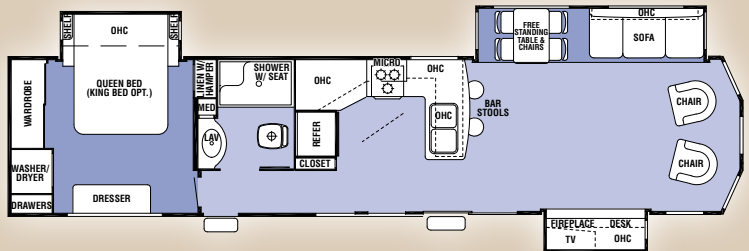
### 40CFK



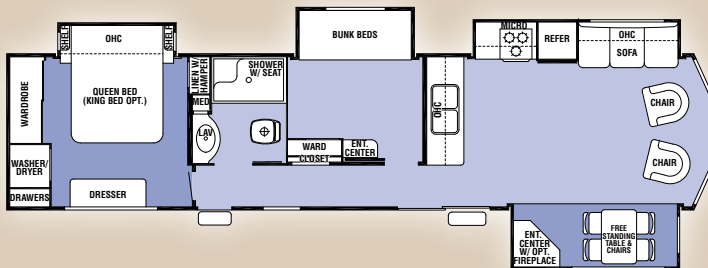
### 40CRL



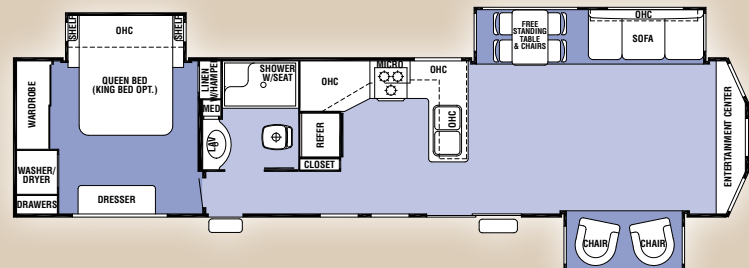
### 40CFL



### 40CB2



### 40CFE



## Exterior Features

- #30 Gas Bottles with Bottle Cover & Automatic Change Over
- 102" Wide Body
- 16" Tires
- 30" Radius Door with Deadbolt Lock and Drip Cap with "Soft Top" Entry Storm Doors
- 65 Amp Power Converter
- 7' (84") Tall Slide-Outs
- 8' (96") Interior Height
- A Combination of Artwork Graphics and Automotive Paint for a Residential Exterior Look
- All Exterior Compartment Doors, Exterior Lights and Corners are Sealed with Butyl Rubber & Silicone - Proven to be the Best Sealant in the Industry - No Putty or Foam Tape
- Black Tank Flush
- Break Away Switch
- Cambered 10" I-Beam
- Cedar Creek's Famous All Aluminum Super Structure
- Convenient Single Access Phone Jack & Cable TV Connections
- Decorative Front Cap with Molded Picket Fence
- Detachable Hitch
- Enclosed and Triple Layered Insulated Underbelly (Calculated R-Value 38/80 Degree Ambient Temperature)
- Hitch Light
- Large Surface 12V. Heating Pads on All Holding & Fresh Water Tanks
- Large White Framed Dark Tinted Jalousie Clamp Ring Windows with Butyl Rubber Seals
- Lighted Entry Step
- Porch Light
- Radius Wrapped Bottom Metal Skirt
- Selector Switches for Slide-Rooms
- Single Access Fresh Water Fill & City Water Hook-Up with Lock
- Smooth, Easy Operating, Easy Grip, Entry Steps - Extra Wide for Confident Footing
- Tinted Safety Glass
- True Gelcoat Lockable Clamp Ring Exterior Baggage Doors with Thumb Grip & Door Catch

## Interior Features

### Bedroom

- 12" Deep, Drawers in Main Bedroom area
- Bedroom Roof Vent
- Bedroom Slide - 60" x 80" Queen Bed 2 x 2 Finished Bed Base
- Braced & Wired for Ducted 2nd Air Conditioner
- Ceiling Mounted, Individually Switched, Overhead Reading Lights
- Large Capacity Storage Area Under the Bed
- Luxurious Bedspread which includes Elastic Mattress Grips
- Mirrored Closet Doors
- Solid Wood Dresser Top
- Solid Wood Shelves
- Swivel Mount TV Antenna with Power Booster
- Serta® Residential Mattress with Gas Lifts, Side Ventilation Windows, Designer Residential Style Headboard & Pillows
- Washer/Dryer Prep that Allows for Either Combination or Stack Washer/Dryer

### Kitchen

- 18 Cu. Ft. Refrigerator with Ice Maker
- Congoleum® Diamondflor® Armorguard® Vinyl Floor Covering
- Crown Molding Complementing all Overhead Cabinets in Kitchen Area
- Entire Water Filtration System which Includes Tank and City Water - Even Your Shower Water is Filtered
- Free Standing Table with Hidden Table Leaf Extension and 4 Chairs with Hidden Storage
- Halogen Flat Ceiling Lights
- Hoosier Cabinet - (40CRL Only)
- Larger 74 Gallon Demand Water System
- Lazy Susan (Where Applicable)
- Pantry (Where Applicable)
- Residential Style Roller Drawer Guides with Travel Locks - No Binding
- Silverware Drawer
- Solid Cherry Drawer Fronts with Baltic Birch Sides and Ends Convenient 5" & 8" Sizes
- Solid Cherry Arched Cabinet Doors with Hardwood Cherry Styles
- Toe Kicks at the Base of the Kitchen Cabinet

- True Corian® Countertops with Deep Twin Stainless Steel Under-Mounted Sinks
- Bar Stool (1) (40CRL only)

### Misc. Appliances

- Fully Ducted 15,000 BTU High Output AC with Cold Air Returns that are also Braced and Wired for an Optional Ducted 2nd A/C
- 20 Gallon Water Heater
- 50 Amp Detachable Power Cord
- Carbon Monoxide Detector
- LP Gas Detector
- Single Digital Residential Style Thermostat for Heating and Cooling
- Smoke Detector
- 12V. Battery Disconnect
- Solid State 65 Amp Power Converter
- Suburban 42,000 (Minimum) BTU Furnace
- Wall Mount Monitor Panel
- Water Heater By-Pass System for Winterization

### Living Room

- Ceiling Fan with Light
- Create-A-Breeze Fantastic Fan with Thermostat and Rain Sensor in the Kitchen
- Dimplex® Fireplace - The World Leader in Electric Fireplaces
- Fluted Hardwood Main Slide Fascia Supported by Oak Columns and Post Pad at Carpet
- Main Slide-Room Height 7'
- End Table
- Day/Night Shades
- Trackless Plush Pile Carpeting in all Living Room and Bedroom Areas
- TV Cable, Satellite, and Phone/Data Port Jack in Living Area
- Upgraded Lighting at Sofa and Decorative Overhead Dinette Light
- Valances with Curtains
- Wired for Winegard Direct TV Traveler Satellite Systems

### Bathroom

- 18" Tall Porcelain Toilet with Circular Flow Flush System
- Create-A-Breeze Fantastic Fan with Thermostat and Rain Sensor
- Designer Metal, 3 Tier Bath Towel Rack and Toilet Paper Holder

- Large Bathroom Mirror Medicine Cabinet with Overhead Make-Up Lights
- Radius, One-Piece Molded, Residential Style, Fiberglass Shower with Seat that Won't Deteriorate with Age
- Skylight over Tub
- Linen Closet
- Wall Switched Ceiling Lights in Key Locations

## Cedar Creek Cottage Explorer Package

(1) LCD Flat Panel, HD Television with Full Dolby Digital, Dolby Prologic, Surround Sound Stereo - DVD/CD/Tuner and MP3 Player, 30" Residential Microwave, Thermo-pane Patio Door, Hide-A-Bed Air Mattress Sofa, True Gelcoat Exterior, Black Tank Flush, SuperLube Bearing System, 20 Gallon Electric Water Heater, 15,000 BTU Air Conditioner, Fantastic Fan with Rain Sensor in Kitchen, 9100 Electric Awning, Entire Water Filtration System, Cedar Creek Switch Control Center, Winegard HD Ready Pre-Wire.

## Options

- Slide-Room Awning Toppers
- Penguin 2nd Air Conditioner
- Create-A-Breeze Fan/Power Lift, Thermostat & Rain Sensor in Bedroom
- King Size Bed Replacing Queen Bed with Shelves
- Beige La-Z-Boy® Leather Recliners (Where Available)
- Splendide Combination Washer/Dryer
- Splendide Stackable Washer/Dryer - Wired Individually to Allow Simultaneous Wash & Dry Cycles
- 30" Convection Oven with Cooktop
- Upgraded Rebond Carpet Pad
- ThermoPane® windows
- Table Lamp
- Hidden Hinges
- Trump Luxury Residential King & Queen Mattress



### PRE-DELIVERY INSPECTION FACILITY

20,000 square feet of quality assurance. The bare essentials for a premium product. This state-of-the-art facility gives immediate daily feedback to production for quality assurance in every unit built.



**Forest River, Inc. encourages our customers to purchase their Forest River products from a local dealership whenever possible for the following reasons:**

- 1) Forest River, Inc. dealers are independently owned and operated businesses so priority service and scheduling is at their discretion and is often provided to customers that purchased their unit at that dealership.
- 2) Purchasing locally allows customers to establish meaningful relationships with a dealer, enhancing the RV experience through assistance with product questions, user tips or RV regulations for your state or country, and much more!
- 3) Canadian customers must meet requirements to bring an RV purchased out of the country to their home. These requirements may involve additional inspections and certifications, taxes and fees. Your local Canadian Dealer is a professional at meeting these requirements.
- 4) Scheduling timely warranty repairs and adjustments through a local dealership provides far greater flexibility and convenience to you, the customer!

It is the goal of Forest River, Inc. that all of our RV owners fully enjoy the RV experience and that customer satisfaction meets or exceeds their expectations!



**Learn More**  
Scan this barcode using a QR Reader on your smart phone to learn more about Forest River.



A Berkshire Hathaway company.

### DEALER

F-66-429 2011 Forest River, Inc. Litho U.S.A.

All illustrations and specifications contained in this literature are based on the latest product information at the time of publication. Forest River, Inc. reserves the right to make changes in prices, colors, materials, equipment and specifications at any time without notice and assumes no responsibility for any error in this literature. All units are shipped F.O.B. Topeka, Indiana. • CONSULT YOUR LOCAL DEALER FOR WARRANTY INFORMATION

Forest River, Inc. / 501 Hawpatch Road / Topeka, IN 46571  
Ph: 260-593-2404 / Fax: 260-593-2447  
Parts & Service / Ph: 260-593-3017 / Fax: 260-593-2645  
Visit our website at [www.forestriverinc.com/cedarcreek](http://www.forestriverinc.com/cedarcreek)