

# ALL-AMERICAN SPORT

BY FOREST RIVER

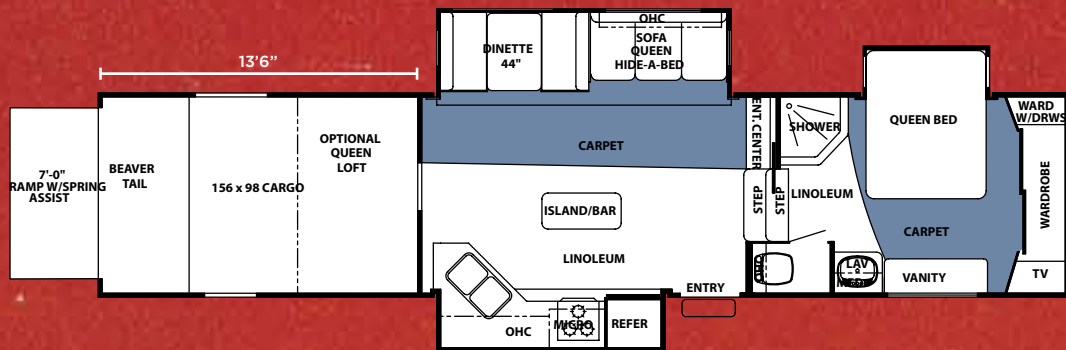


ALL-AMERICAN SPORT.  
LIVE THE AMERICAN DREAM.





# ALL AMERICAN Sport



## 385 CKTS FIFTH WHEEL

### SPECIFICATIONS

Hitch weight (lbs.)	3160	Fresh Water (gal.)	90 Gal.
Axle weight (lbs.)	10770	L.R. Area Cargo Capacity	16520
Ship weight (lbs.)	13930	Axle Capacity (lbs.)	(3x) 5,200
GVWR	18590	Cargo Area Capacity	2000
Exterior Length	41' 2"	Water Heater G/E DSI	6 Gal.
Exterior Height	13' 5"	LP Capacity	2) 30#
Awning Length	15'	Furnace BTU	35,000
Gray Water (gal.)	77 Gal.	Bedroom Height	76"
Black Water (gal.)	50 Gal.	Tire Size	LT235/85/R16E

385 CKTS BURGUNDY SHOWN WITH OPTIONAL LOOSE DINETTE



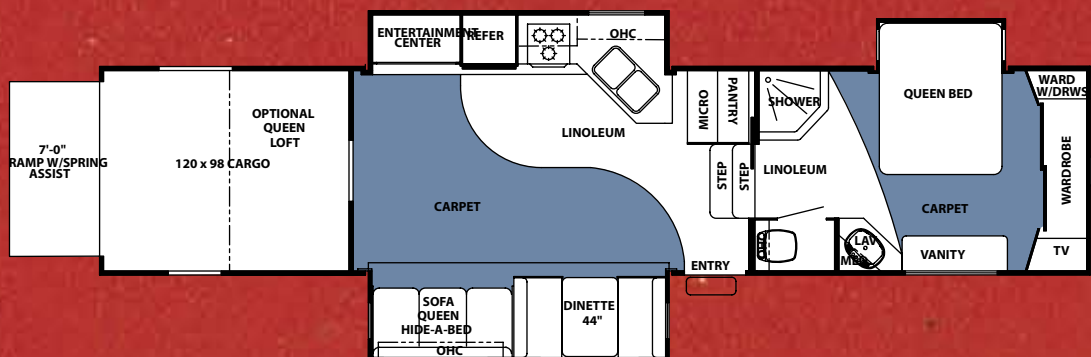
385 CKTS BURGUNDY MAIN LIVING AREA



Alternative Graphics Package



# ALL AMERICAN *Sport*



## 385 RLTS FIFTH WHEEL

### SPECIFICATIONS

Hitch weight (lbs.)	2720	Fresh Water (gal.)	90 Gal.
Axle weight (lbs.)	11220	L.R. Area Cargo Capacity	16420
Ship weight (lbs.)	13940	Axle Capacity (lbs.)	(3x) 5,200
GVWR	18420	Cargo Area Capacity	2000
Exterior Length	40' 10"	Water Heater G/E DSI	6 Gal.
Exterior Height	13' 5"	LP Capacity	(2) 30#
Awning Length	15'	Furnace BTU	35,000
Gray Water (gal.)	77 Gal.	Bedroom Height	76"
Black Water (gal.)	50 Gal.	Tire Size	LT235/85/R16E

### 385 RLTS KITCHEN ENTERTAINMENT SLIDE



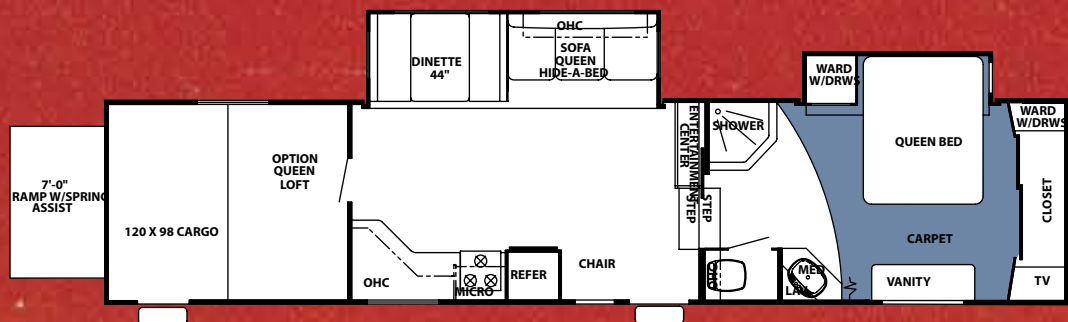
### 385 RLTS STONE WITH OPTIONAL REAR QUEEN LOFT



Eagle Graphics Package



# ALL AMERICAN *Sport*



## 375 CKDS FIFTH WHEEL

### SPECIFICATIONS

Hitch weight (lbs.)	2760	Fresh Water (gal.)	90 Gal.
Axle weight (lbs.)	10710	L.R. Area Cargo Capacity	16360
Ship weight (lbs.)	13470	Axle Capacity (lbs.)	(3x) 3,200
GVWR	18360	Cargo Area Capacity	2000
Exterior Length	40' 3"	Water Heater G/E DSI	6 Gal
Exterior Height	13' 5"	LP Capacity	(2) 30#
Awning Length	18'	Furnace BTU	35,000
Gray Water (gal.)	77 Gal.	Bedroom Height	76"
Black Water (gal.)	50 Gal.	Tire Size	LT235/85/R16E

375 CKDS BURGUNDY LIVING AREA

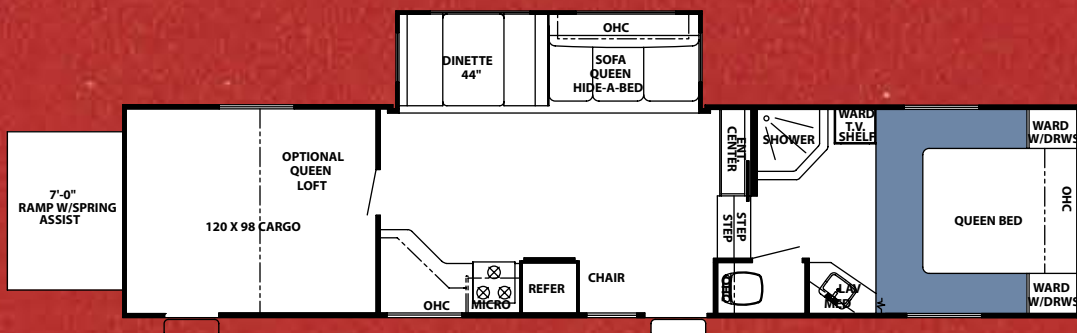


375 CKDS BURGUNDY BEDROOM (ALSO AVAILABLE WITH KING BED)





# ALL AMERICAN Sport



## 365 CKS FIFTH WHEEL

### SPECIFICATIONS

Hitch weight (lbs.)	2590	Fresh Water (gal.)	90 Gal.
Axle weight (lbs.)	9980	L.R. Area Cargo Capacity	13590
Ship weight (lbs.)	12570	Axle Capacity (lbs.)	(2x) 7,000
GVWR	16590	Cargo Area Capacity	2000
Exterior Length	37' 2"	Water Heater G/E DSI	6 Gal.
Exterior Height	13' 5"	LP Capacity	(2) 30#
Awning Length	20'	Furnace BTU	35,000
Gray Water (gal.)	77 Gal.	Bedroom Height	76"
Black Water (gal.)	50 Gal.	Tire Size	LT235/85/R16E

### 365 CKS BEDROOM IN STONE



### 365 CKS KITCHEN SLIDE IN BURGUNDY



### PEACE OF MIND.

Forest River RV's also feature one year of free roadside assistance with every 2006 All American Sport purchase. This is just one more way to say "Thank you" and to ensure that all of our customers have an enjoyable traveling experience.

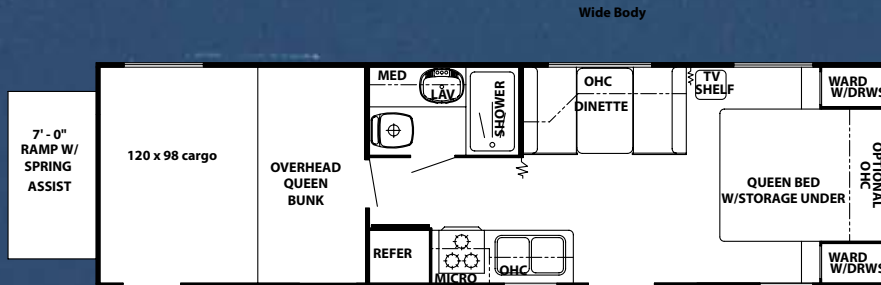


# ALL AMERICAN Sport

## 281 FB TRAVEL TRAILER

### SPECIFICATIONS

Hitch weight (lbs.)	1300	Fresh Water (gal.)	76 Gal.
Axle weight (lbs.)	6240	L.R. Area Cargo Capacity	1920
Ship weight (lbs.)	7540	Axle Capacity (lbs.)	(2x) 5,200
GVWR	11460	Cargo Area Capacity	2000
Exterior Length	31' 5"	Water Heater G/E DSI	6 Gal.
Exterior Height	12'	LP Capacity	(2) 30#
Awning Length	20'	Furnace BTU	35,000
Gray Water (gal.)	27 Gal.	Bedroom Height	80"
Black Water (gal.)	27 Gal.	Tire Size	STD225/75/R15D



### 281 FB IN STONE



### 281 FB FRONT TO BACK



21 FB Shown with Alternative Graphics Package

# CONSTRUCTION

One-Piece TPO Rubber Roof

3/8" Roof Decking

Batt Insulation

5" Wood Roof Truss

L.E.D. Clearance Lights

Fiberglass Cargo Interior

3/4" OSB

Diamond Plate Transition Ramp

Raised Metal Tracks

Checkerboard Steel Construction  
Spray-in Bed Liner

Double Welded Aluminum Frame

Laminated Slide-out Construction

Gel Coated Front Cap

Tinted Windows

Laminated Bath Deck

Basement Storage

Self-Leveling Hydraulic  
Front Jacks

Gel Coated Fiberglass

Luan

High Density  
Foam Insulation

Hydraulic Rack and Pinion Slide-out with  
Room Selector Switch

Darco Underbelly

10" I-Beam - 12" on CKTS

Alko Independent Rubber Suspension

16" E-Rated Tires

Enclosed Underbelly

10" Drop Down Frame (N/A on 385 CKTS)

Carpet  
Vapor Barrier Wall  
Padding  
5/8" Tongue and Groove Floor  
2' x 3' Studs





# STANDARD FEATURES AND POPULAR OPTIONS



**LARGE BASEMENT STORAGE WITH BATTERY DISCONNECT (STANDARD)**



**385 CKTS SHOWN WITH FOUR QUADS**



**385CKTS SHOWN WITH DUAL ELECTRIC BEDS (OPTIONAL)**



**120 PSI AIR COMPRESSOR WITH 5 GALLON TANK (OPTIONAL)**



**ATRIUM WINDOW (OPTIONAL)**



**TRAILAIR PINBOX (STANDARD)**



**SLIDE SELECTOR SWITCHES (STANDARD)**



**WHEEL CHOCKS AND TIE DOWN SYSTEM (OPTIONAL)**



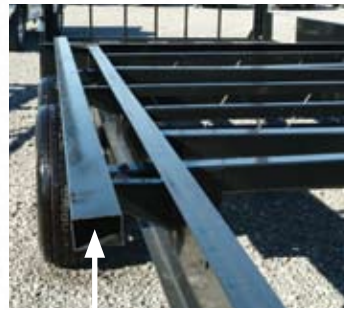
**FANTASTIC FAN IN CARGO AREA AND TOILET (STANDARD)**





REAR GARAGE SHOWN WITH OPTIONAL QUEEN LOFT

- Wood cabinets
- Diamond plate on walls
- Fiberglass interior walls
- LCD TV relocated from the entertainment center
- Spray-on liner



Heavy duty slide out support bar.



Welded grease zerks in frame



Checkerboard frame design supported side to side, front to rear.



SELF-LEVELING HYDRAULIC FRONT JACKS (STANDARD)



Rear ramp frame

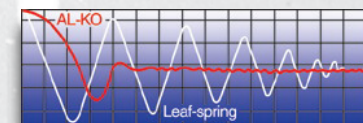


## ALKO® AXLES AND EASY LUBE HUBS

AL-KO Axles offer many advantages over conventional axles:

- Fully independent wheel suspension.
- No metal to metal contact and no springs, shackles, hangers, or U-bolts to break or wear out.
- Lower trailer center of gravity for improved stability.

The UltrULube™ Hubs allow you to repack bearings quickly and easily without disassembly.





# STANDARD FEATURES AND POPULAR OPTIONS

## EXTERIOR

- 102" Width
- 30" Radius Front Entry Door
- Triple Entry Step on Fifth Wheels
- Double Entry Step on Trailer
- 26" Radius Secondary Door w/ Double Step
- 15'-20' Awnings (w/a)
- Large Tinted Jalousie Clamp Ring Windows, Radius Cornered w/ Screens Vented Side Windows in Main Slide Out
- Enclosed Gooseneck
- Hitch Light
- (2) 30# LP Tanks w/ Auto Change Over
- LP Tank Cover (Travel Trailer)
- Stabilizer Jacks
- Hydraulic Self-Leveling Front Jacks (Fifth Wheels)
- Fiberglass Front Cap
- Large Basement Storage
- Outside Shower
- Spare Tire, Wheel, and Carrier Mount
- Graphics (Choice option)
- Trail Air Pin Box
- Slide Selector Switches

## INTERIOR

- Four (4) Color Coordinated Interiors
- 6 Panel Wood Grain Passage Doors
- Full 44" Booth Dinette w/ Easy Entry
- Double Pedestal Table
- Bedroom and Kitchen Roof Vent

- Night Shades
- Color Coordinated Drapes and Valances
- Queen Bed-Finished Bed Base w/ Gas Lifts
- Predrilled and Counter Sunk Fastened Cabinetry with Lumber-Core Cabinet Styles
- Plush Carpet w/ Padding
- TV Shelf and Outlet in Bedroom
- Coordinating Wallpaper Border
- Etched Overhead Cabinet Doors in Slide Out
- Metal Drawer Glides Located on Both Sides of All Drawers
- Strategically Placed Antique Brass Hardware
- Hide-a-Bed w/ 2 Throw Pillows Fifth Wheels
- Bedspreads w/ Matching Pillows and Shams
- Headboard
- Mattress Upgrade
- Interior Lighting Package
- Range Cover
- Raised Refer Door Insert
- Oak Facing Around Main Slide Out
- Shower Stall Glass Door Fifth Wheel
- Skylight Over Shower
- Pots and Pans Drawers Under Dinette
- Laminated Counter Tops w/ Matching Radius Edges
- Residential 60/40 Sink w/ 2 Sink Covers

## APPLIANCE/EQUIPMENT

- DVD/CD/MP3/AM/FM/Weather Band High Power Digital Surround Sound
- 19" LCD Flat Screen Television Hooked Up thru Surround System Fifth Wheel
- 27" TV in 385 RLTS
- 6-Gallon Gas/Electric DSI Water Heater
- Three Burner Range w/ 22" Oven
- Microwave w/ carousel
- 35,000 BTU Furnace (floor ducted)
- 13,500 BTU Ducted Central Air w/ "Quick Cool" Feature
- Power Range Hood w/ Light
- TV Hook-UP
- Satellite Prep
- Cable Hook-UP
- Water Heater By pass
- "Full Coach" 100% Water Filter System\*
- 6 Cubic Double Door Refrigerator
- Two Fantastic 12" Fans w/ 10 Blades (cargo area and toilet area)

## CONSTRUCTION

- Checker Board Steel Construction in Cargo Area
- Double Welded Aluminum-Framed Sidewalls
- Vacuum Bonded Laminated Sidewalls
- Powder Coated Frame w/ Mig Welded Outriggers
- Enclosed Underbelly
- Vacuum Banded Laminated Bath Deck



- Vacuum Bonded Laminated Front Wall
- 5/8" Plywood Tongue and Groove Decking (Living Area)
- 5" Truss Roof Rafters
- 3/8" Roof Decking (Entire Roof)
- 1 Piece 2 Ply Tuff Ply Rubber Roof Membrane w/ Built in Fire Retardant
- Awning Drip Rail w/ Down Spouts
- 2" x 3" Floor Joists 12" on Center
- R 9 Insulation
- Hydraulic Rack and Pinion Slide Outs w/ Manual Expansion and Contraction Capabilities
- 6'4" Interior Slide-out Height

### **AXLE/FRAME**

- Al-Ko Rubber Independent Suspension
- Axle System w/ Ultra Lube
  - (2) 5200# on Travel Trailer
  - (2) 7000# on 36CKS
  - (3) 5200# on 375 and 385's
- All Wheel Electric Brakes
- 8" Box Tube Frame on Travel Trailer
- 10" I-Beam Construction - 12" on 385CKTS (Fifth Wheels)
- Low Ramp

### **SAFETY/SECURITY**

- Flush Door Latches w/ Dead Bolt Locks
- Smoke, Gas, and CO2 Detector
- LP Leak Detector
- Fire Extinguisher

- GFI Receptacle Kitchen, Bath, and Outside
- Screen Doors w/ Safety Latch
- Scare Light
- Porch Lights
- Front Step Light
- LED Clearance Lights
- Break Away Switch

### **CARGO AREA**

- 102" Exterior Width
- 98" Interior Width
- Spray on Liner
- Fiberglass Sidewalls
- (2) 110 volt Outlets
- 24" Diamond Plate-Sidewall Base
- 7'0" Ramp Door
- Checker Board Steel Supports Side to Side and Front to Rear
- Fantastic Fan w/ Wall Switch
- Large Tinted Window w/ Screen
- Vapor Barrier Wall
- Wood Cabinets w/ Shelf and Netting Fifth Wheels
- Ventilation Doors
- Directional Loading Lights
- TV Outlet
- Rear Entrance Door w/ Screen door

### **POPULAR OPTIONS**

- Hide-n-Screen
- Wheel Chocks
- Tie Down Track System
- Enclosed Queen Loft in Fifth Wheel
- Mobile Fuel Station
- Generator (Mandatory w/ 50 amp Electric Service)
- 10-Gallon Gas/Electric Water Heater w/ DSI
- A/C 15k IPO 13.5
- Heated Holding Tanks
- 8 Cubic 2 Door Refrigerator
- Two Exterior Speakers
- Atrium Dinette Window Fifth Wheel
- Aluminum Wheels (4) (6)
- Safety Glass Windows
- Awnings Over Slide Outs
- Dual Electric Beds w/ 385CKTS (N/A Loft Cabinets)
- King Bed Optional in 375 CKDS
- Air Compressor
- Black Tank Flush
- Free Standing Dinette



# ALL-AMERICAN SPORT **TOP SELLING FEATURES**

The All-American Sport is above and beyond the best in it's class. Here's a few reasons why.

- 102" Widebody
- Al-ko Heavy duty Independent suspension axle system with ultra lube
- Checkerboard Steel Frame Construction in cargo area
- Low rear ramp 26" off ground
- Aluminum box channel vacuum bonded laminated sidewall construction
- Hydraulic Rack and Pinion slide-out systems
- Enclosed underbelly
- Vapor Barrier wall
- 7'-0" steel structured ramp with grease zerks in frame
- 6'-4" interior height of main slide-out
- Sprayed in liner, cargo and ramp
- Cargo area lined with fiberglass and diamond plate
- Extra large basement storage (Fifth Wheels)
- 19" LCD flat screen TV Hooked up through surround sound system (Fifth Wheels) 27" TV in 385 RLTS
- Optional enclosed rear loft bed
- 10" I Beam construction - 12" on 385 CKTS (Fifth Wheels)
- Hydraulic Self-Leveling Front Jacks
- Slide Selector Switches
- Night Shades
- Trail Air Pin Box

## AVAILABLE INTERIORS:



**STONE INTERIOR**



**SAGE INTERIOR**



**TAN INTERIOR**



**BURGUNDY INTERIOR**



The Aluminum superstructure provides lasting durability with a lightweight rugged structure for easy towing.



COMPLIMENTS OF



Forest River, Inc. 55470 CR 1 Elkhart, IN 46515-3030 Phone: 574.533.5934 Fax: 574.533.2965

[www.forestriverinc.com/allamerican](http://www.forestriverinc.com/allamerican) [www.forestriveraccessories.com](http://www.forestriveraccessories.com)

All illustrations and specifications contained in this literature are based on the latest product information at time of publication. Forest River reserves the right to make changes in prices, colors, materials, equipment and specifications at anytime without notice and assumes no responsibility for any error in this literature. All units are shipped F.O.B. Goshen, Indiana.

CONSULT YOUR LOCAL DEALER FOR WARRANTY INFORMATION.