

LUXURY SPORT UTILITY
TRAVEL TRAILERS & FIFTH WHEELS

XLR
By Forest River

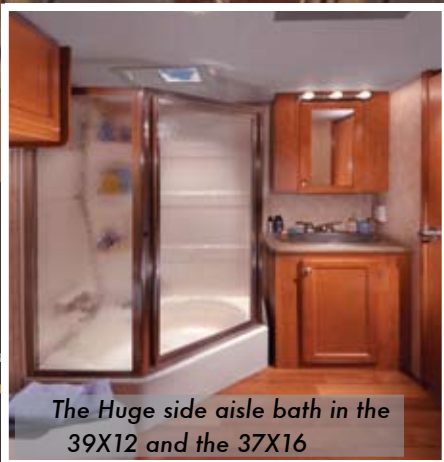




37X12 Shown with Cosmopolitan Interior and Optional Patio Door
Replacing the self storing ladder pictured below.

The 37X12 offers spacious Contemporary living with a 12' slide-out area.
The Standard queen loft offers the versatility of additional sleeping space
or extra storage.





The Huge side aisle bath in the 39X12 and the 37X16

The XLR Bedrooms combine comfort and function. Whether it's the 60"X80" Pillow top Mattress or the full width mirrored wardrobe with recessed shoe storage and large drawers: You'll feel at home in XLR.



Model 37X12 Kitchen

All XLR Cabinetry is Predrilled and Screwed. You'll Find the Quality you Expect and Deserve in XLR.



*Need More Counter Space-
The 38X12 Has It!*



Eucalyptis Interior



*39X12 Dining Area Converted to Sleeper
Shown with Windswept Interior*

XLR Sofa/Dinette slides, offer a little bit More. More Style, More Storage under the dinettes and air-bed sofa, and More Living Space.



FEATURES



A



B



C



D



E



F



G



H



I



J

- A. Recessed Bullet Lights With Dimmer Switch. Modern Lighting Lets you Control the Mood.
- B. Full Extension Ball Bearing Drawer Guides, Smooth Operation, with access to the Entire Drawer.
- C. 10,000 Gallon, 1 Micron, COMPLETE WATER FILTRATION SYSTEM, filters all City and Tank Water in the Unit.
- D. Fantastic™ Fan-Located in the Bathroom and Cargo Area, Hot Air Goes Out-Cool Air Comes in with the Flick of a Switch.

- E. Slide Out Slickers, Protects your Carpet While the Slide Out goes in and out.
- F. Storage Drawers Under Sofa and Dinette.
- G. Gel-Coated Fiberglass Front Cap-Increased Turning Radius Accented with Mirror, Hi/Lo LED Lights and Awesome Graphics.
- H. Airbed Sofa-Unbelievable Comfort!
- I. Aluminum Cabinets in Cargo Area





K



M



N



L



O



P

J. Wooden Loft Ladder-Great Looking! Self Storing! (37X12 Only)

K. LED Clearance and Brake Lights-Modern Sleek Style. High Visibility and Longer Lasting Than Traditional RV Lights.

L. Entertainment Center- Updated Technology for your Viewing and Listening Pleasure.

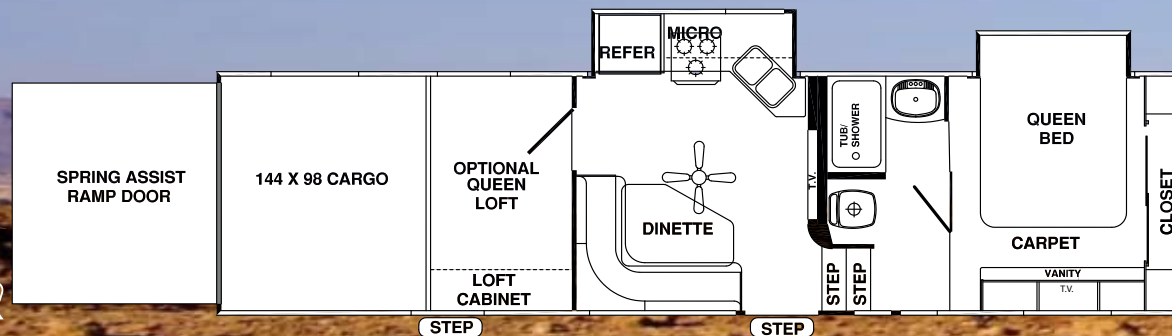
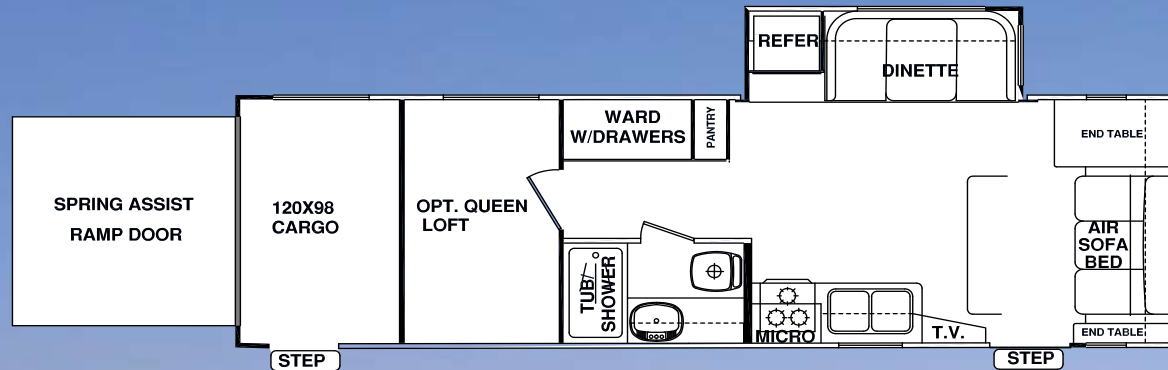
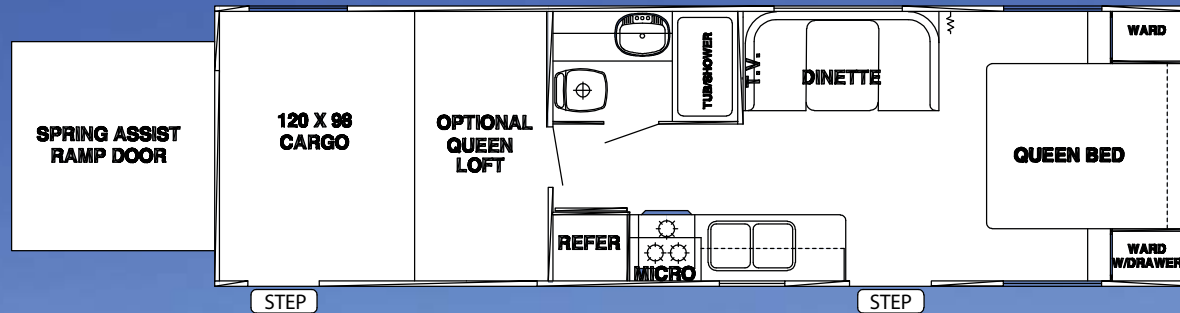
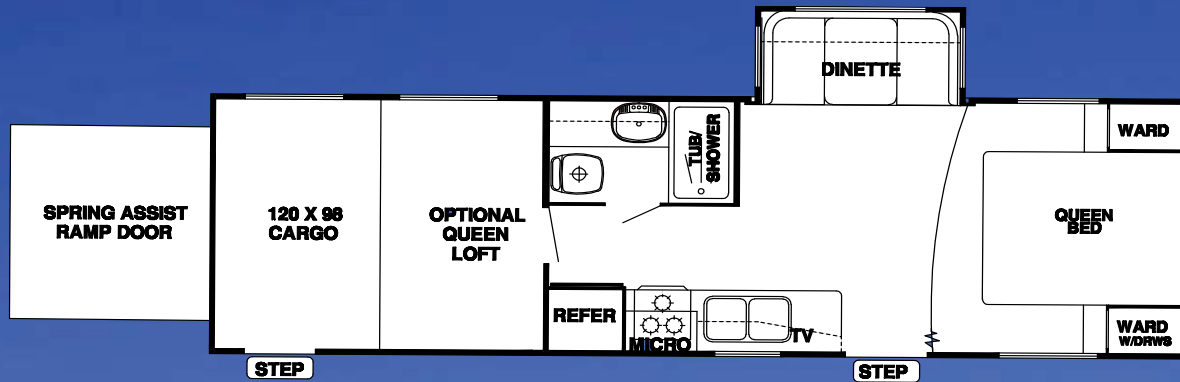
M. Dual Fuel Tank Capacity, Dedicated Tank for Generator and Toys. (Optional)

N. Hid-N-Screen for Cargo Door-Smooth Operation, and NO Velcro! (Optional)

O. A&E 915 Series Electric Awning. Fast , Easy, No Hassle Operation. Takes the Support Arms out of the Picture. (Optional)

P. Outside TV- Take your bedroom TV outside. (Optional)





Travel Trailers

28 XT

Ship Weight: TBD
Hitch Weight: TBD
GVWR: TBD
Fresh Water Cap. : TBD
Grey Water Cap. : TBD
Waste Water Cap. : TBD
Number of Axles: TBD

28 I XL

Ship Weight: 8,047 Lbs.
Hitch Weight: 1,344 Lbs.
GVWR: 13,344 Lbs.
Fresh Water Cap. : 100 Gal.
Grey Water Cap. : 68 Gal.
Waste Water Cap. : 34 Gal.
Number of Axles: 2

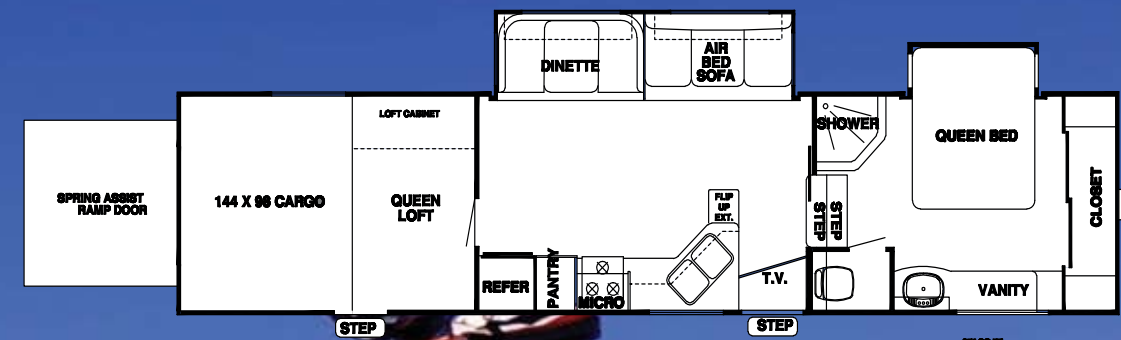
29 XS

Ship Weight: 8,845 Lbs.
Hitch Weight: 1,519 Lbs.
GVWR: 13,519 Lbs.
Fresh Water Cap. : 100 Gal.
Grey Water Cap. : 68 gal.
Waste Water Cap. : 34 Gal.
Number of Axles: 2

Fifth-Wheels

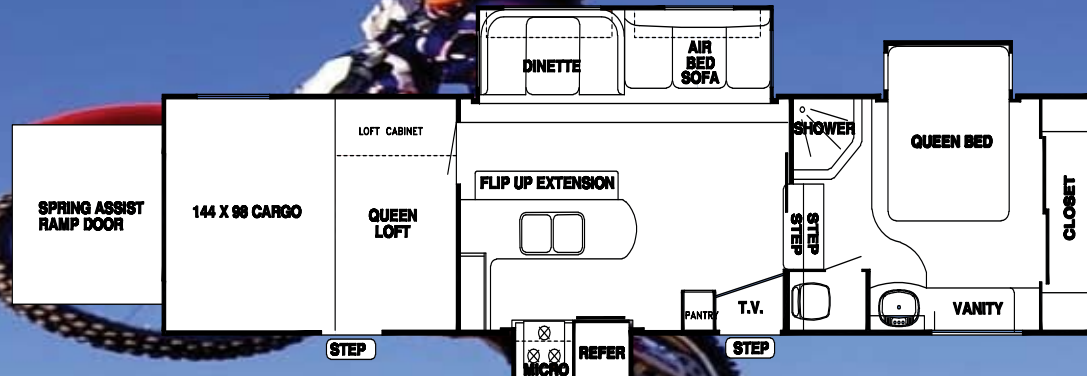
30 X12

Ship Weight: 11,515 Lbs.
Hitch Weight: 2,100 Lbs.
GVWR: 14,100 Lbs.
Fresh Water Cap. : 100 Gal.
Grey Water Cap. : 78 gal.
Waste Water Cap. : 54 Gal.
Number of Axles: 2



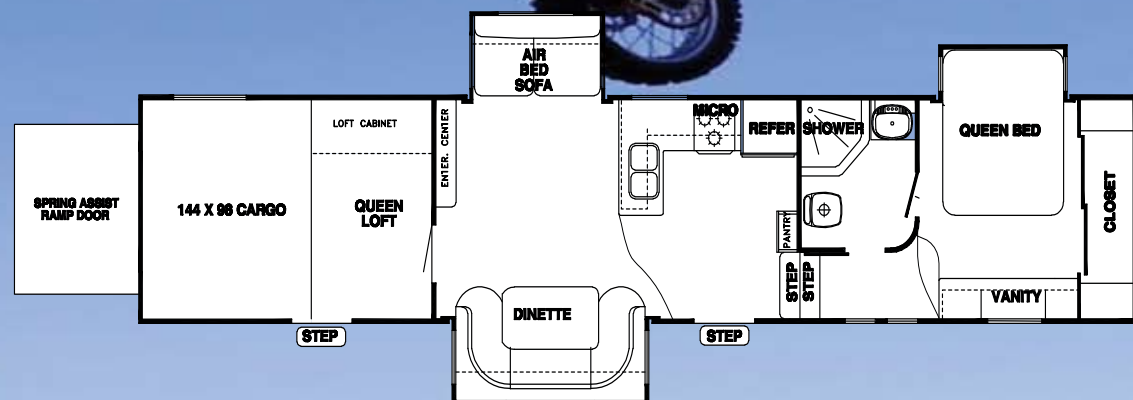
37X12

Ship Weight: 12,330Lbs.
Hitch Weight: 2,750 Lbs.
GVWR: 18,000Lbs.
Fresh Water Cap. : 100 Gal.
Grey Water Cap. : 108 Gal.
Waste Water Cap. : 54 Gal.
Number of Axles: 3



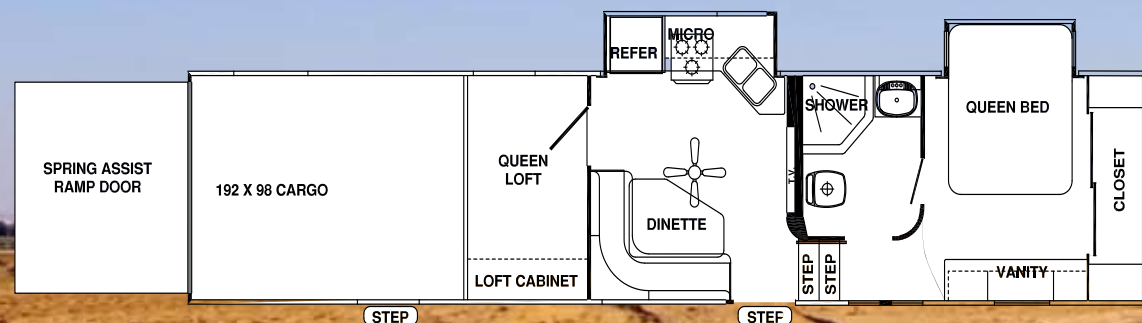
38X12

Ship Weight: 12,725 Lbs.
Hitch Weight: 2,990 Lbs.
GVWR: 18,000 Lbs.
Fresh Water Cap. : 100 Gal.
Grey Water Cap. : 108 Gal.
Waste Water Cap. : 54 Gal.
Number of Axles: 3



39X12

Ship Weight: 13,466 Lbs.
Hitch Weight: 2,844 Lbs.
GVWR: 18,000 Lbs.
Fresh Water Cap. : 100 Gal.
Grey Water Cap. : 108 Gal.
Waste Water Cap. : 54 Gal.
Number of Axles: 3



37X16

Ship Weight: TBD
Hitch Weight: TBD
GVWR: TBD
Fresh Water Cap. : TBD
Grey Water Cap. : TBD
Waste Water Cap. : TBD
Number of Axles: TBD

Standard Features

Exterior

- 102" Wide Body Design
- 12" I-Beam Steel Frame (8" on Travel Trailers)
- Triple 5200 LB. Axles with E-Z Lube Hubs (Most 5th Wheel Models Only)
- Stylish Aluminum Wheels
- Underbelly Tire Carrier
- Fully Enclosed Underbelly
- Front Power Electric Jacks
- Rear Stabilizer Jacks
- Powerful & Fast Hydraulic Slide Outs (Electric on Travel Trailers)
- Double Welded Aluminum Frame with Superior, Vacuum Bonded Laminated Sidewalls
- High Gloss Gel Coat Fiberglass Exterior for Easy Maintenance and Resilience to UV Rays
- Aggressive Gel Coated Fiberglass Front Cap with Mirror and Hi/Low LED Light
- LED Clearance Lights, Brighter with Longer Life than Traditional Filament Lights
- Full One Piece, Two Ply, Rubber Roof
- Tinted Safety Glass Windows with Butyl Rubber Seals for Superior UV&Weather Protection
- 50 AMP Service (30 AMP on Travel Trailers)
- Generator Prep with Transfer Switch
- Room For Two Batteries
- 12 V. Battery Disconnect
- Dual 30# LP Gas Bottles with Automatic Change Over
- Large "Clean" Pass through Storage
- Exterior Shower & Garden Hose Hook-UP
- Black Tank Flush
- Convenient Cable TV Hook-Up with Satellite Prep
- Three Exterior Scare Lights- Two on the Door Side & One over the Fuel Station

- Detachable Exterior Ladder
- Fixed Rear Loading Lights
- Exterior Marine Grade Speakers
- Folding White Enamel Assist Handle at Main Entry
- Lighted Entry Steps for Safe Entry and Exit after dark

Living Area

- Rich Autumn Cherry Cabinets with Brushed Nickel Hardware and Contrasting Accents
- Choice of (4) Awesome Interior Décor Fabrics
- AM/FM/CD/DVD/MP3 Player, SIRIUS Satellite Radio Ready, I pod doc, with Kenwood AMP, Subwoofer and Remote Control
- 26" LCD HD TV with Directional Arm for Most Models, (32" in 39X12)
- XLR Command Control Panel
- Residential Ceiling Fan with Directional Lighting (5th Wheels Only)
- 13,500 BTU Ducted A/C
- Recessed Lighting with Dimmer Control Switch
- Air Bed Sofa with Extra Large Drawer Storage
- Contemporary Style Dinette (converts to bed) with Large Drawer Storage
- Queen Loft with Cabinet and TV Hook Up (5th Wheels Only)
- Wooden Loft Rail on Outside Edge of Loft
- Fabric-covered Lambrequins with "XLR" branding
- 5/8" Tongue & Groove Plywood Floor Decking
- Berber Style Carpet to Enhance that Contemporary Look
- Slide-Out Slickers Protect Carpet from Slide-Out Rollers
- Rich Cherry Plank Linoleum
- Flush-floor Slide Rooms
- 35,000 BTU Furnace

Kitchen

- Dometic 8 Cu. Ft. Refrigerator with Black Radius Front Panels
- Microwave Oven
- 22" Oven with Three Burner Cook Top and Range Cover
- Large 100 Gallon Demand Water System
- Full System Water Filtration (Forest River Exclusive)
- 12 Gal. Gas/Electric DSI Water Heater
- Deep Residential Style Sink with Single Lever Faucet and Pull-Out Sprayer
- Dual Sink Covers
- 14" & 16" Galley Drawers with Full Extension Ball Bearing Drawer Guides-Perfect for Silverware and Utensils
- Predrilled and Counter Sunk Fastened Cabinetry
- Raised Panel Solid Wood Doors on Overhead Cabinets
- Recessed Lighting with Dimmer Control Switch in Dinette Area – Additional Galley Overhead Lighting with Dimmer Switch in 39X12
- Powerful 65 amp Converter with Battery Charger

Bedroom

- Bedroom Slide with 60"X80" Queen Bed and Residential Pillow Top Mattress (5th Wheels Only)
- Under Bed Storage with Piston Gas Struts for Easy Access
- Coordinated Bedspread with Built-In Pillow Shams
- Bedroom Roof Vent Wired and Framed for Second A/C
- Full Width Mirrored Wardrobe with Recessed Shoe Storage
- Bedroom Storage Drawers with Full Extension Ball Bearing Guides
- Laundry Hamper (30X12, 39X12, 37X16)
- Bedroom TV Hook-Up
- Swivel Mount TV Antenna with Power Booster
- Cross Ventilation Windows for a Comfortable Nights Sleep

Bathroom

- Neo-Angle Garden Tub/ Shower with One Piece Surround(5th Wheels Only Excluding 30X12)
- Brushed Nickel Faucet in Shower
- Skylight over Shower
- Glass Shower Door
- Foot Flush Porcelain Toilet
- Fantastic Fan for Enhanced Ventilation in Bathroom Area
- Large Bathroom Medicine Cabinet with Mirror and Overhead Make-Up Lights
- Wall Switched Ceiling Lights in Key Locations

Cargo Area

- 12'X8'2" Cargo Area with Beaver Tail for Increased Accessibility (Most 5th Wheels)
- Travel Trailers Feature a 10'X8'2" Cargo Area with a Flat Floor and No Wheel Well Obstruction
- 1" Thick Floor Decking
- Durable "Non Slip" Rubber Floor and Ramp Door
- Eight D-Rings Secured to Steel in Cargo Floor
- Large Cabinets for Extra Storage
- Flip Down Aluminum Work Station
- Gear Rack with Enough Room for two Full Face Helmets (Not available with Electric Furniture Options)
- Above Ramp Door Storage with Cargo Net
- Hinged Spring Assisted Ramp Door (No Cables Required)
- Plunger Switch on Ramp Door- When You Lower the Ramp Door the Light Comes On!
- Ducted A/C Vent for Added Comfort in Cargo Area
- Fantastic Fan with Wall Switch for Enhanced Ventilation
- Side "Pop Vents" for Increased Air Flow
- Double Sealed, Vapor Door - between Garage and Living Area

- Exterior Walk-in Door located for Easy Entry with Optional Dual Electric Beds Up or Down

Safety Package

- Break-away Switch at Hitch
- Exterior Shut-Off Switch for Optional Fuel Station
- Dead Bolt Lock on Entrance Doors
- Ground Fault Interrupter (GFI) in Bathroom and Exterior Patio Receptacle
- Smoke Detector
- Carbon Monoxide Detector
- LP Gas Leak Detector
- Fire Extinguisher

Popular Options

- Hid-N-Screen
- Dual Electric Beds
- Electric Sofa Bed with Bunk
- 5.5 KW Onan Marquis Gold Gas Generator with Fuel Tank (5th Wheels only, 4.0 on Travel Trailers)
- Mobile Fuel Station with Fuel Tank
- 15,000 BTU A/C
- 12 V. Heated Holding Tanks
- Double Insulation on Roof and Floor
- Thermo Pane Windows
- Extended Pin Box
- Trailair Pin Box
- Trailair Equaflex Suspension
- Dirt Devil Central Vacuum System with Vac Dust pan
- Washer/Dryer Prep (Select 5th Wheels Only)
- Sliding Glass Patio Door (37X12 only)
- LCD TV in Bedroom with Exterior Mount
- Phone Jack
- A&E 915 Series Electric Awning
- Slide-Out Awnings
- 12 V. Power Tongue Jack with Light (Travel Trailers)
- Road Gear Package (Battery Jump Start with Air Compressor and Power Washer)



Forest Rivers Hallmark Of Excellence-

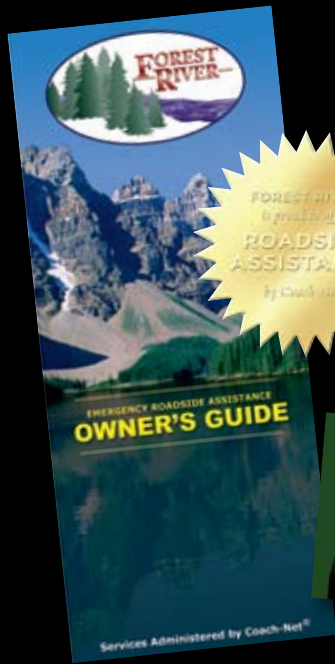
PRE-DELIVERY INSPECTION FACILITIES



THAT'S 20,000 SQUARE FEET OF QUALITY ASSURANCE.

THE BARE ESSENTIALS FOR A PREMIUM PRODUCT.

Brought online in 2005, Forest River is proud of its state-of-the-art test facility. This beautiful building blends many of the old tried and true methods of testing our diverse types of RVs with new innovative ways of solving quality issues. Being centrally located to most Forest River manufacturing facilities, this 20,000 square foot PDI (Pre-delivery Inspection) test building gives immediate daily feedback to individual managers. This assures the production facilities that nothing has slipped by the plant's quality assurance personnel and the units are ready to ship.



Forest River has yet another exclusive feature to offer: One year of free roadside assistance will be given to every 2008 XLR customer. This is just one more way to say "Thank you" and to ensure an enjoyable traveling experience.



First Edition

Forest River, Inc. 55470 CR 1 Elkhart, IN 46515-3030 Phone: 574.533.5934 Fax: 574.533.2965
www.forestriverinc.com/allamerican www.forestriveraccessories.com

All illustrations and specifications contained in this literature are based on the latest product information at time of publication. Forest River reserves the right to make changes in prices, colors, materials, equipment and specifications at anytime without notice and assumes no responsibility for any error in this literature. All units are shipped F.O.B. Goshen, Indiana.

CONSULT YOUR LOCAL DEALER FOR WARRANTY INFORMATION.

Contact Your XLR Dealer:

