

SILVERBACK

By CEDAR CREEK

**PURE
ADVENTURE**



.....
THE LEADER IN FIFTH WHEELS AND THE ONLY
SMART CHOICE FOR THE EXPERIENCED RVER
.....

WELCOME TO THE SILVERBACK



29RE Living room and kitchen slides are detailed with a beautiful double cathedral solid wood fascia. The large entertainment center contains a 32" LCD television.



▲ This spacious 29RE kitchen area provides loads of counter and storage space.



▲ The cathedral ceiling slides create a roomy, high-end residential look and feel.

- ▼ 35K Kitchen area with optional fireplace, 32" LCD, HD ready, flat panel television, 8 cu. ft. refrigerator and microwave with outside vent.



- ▼ The 33L Silverback features standard La-Z-Boy® recliners for added comfort. Check out the Entertainment/Desk slide-out.



SILVERBACK ADVANTAGE



All Silverback kitchens feature true Corian® countertops giving every model the finest quality for modern living.



33L features dramatic radius cabinets and a side aisle bath to create a high-end residential look and feel.



THE SILVERBACK ADVANTAGE



1. Forest River exclusive Serta® Sleeper mattress
2. 9100 series A & E electric awning
3. Locking dock station with an entire demand water filtration system.
4. Dinette chairs with hidden storage
5. Hide-A-Bed air mattress w/hidden storage drawer
6. Removable "Soft Top" vinyl storm doors
7. 22" deep full extension drawer guides where applicable

NEW ! EXTERIOR KITCHEN



This innovative exterior kitchen is great for tailgating and outdoor parties—complete with sink, pull out faucet, counter extension, refrigerator, and grill.

TAP TEST! You will be surprised how many competitors use false foam in their fascia. Silverback's solid wood fascia gives "A" quality difference you can hear and feel!



ALL ALUMINUM SUPER STRUCTURE

Silverback's all aluminum cage construction is on 16" centers or less. Silverback depends on the frame for its strength—not lamination. Customers can repair their units easily. The draw back with one piece laminated construction is the fact that it is one piece. With Silverback repairs are a snap. Silverback has one of the most desired types of construction in the country!



ALUMINUM FLOOR STUDS



ALUMINUM STUDDED SIDEWALLS AND ROOF TRUSSES ON 16" CENTERS OR LESS



THICK SILAPRENE (475 PSI) GUARANTEES SOLID CONTACT BETWEEN THE GELCOAT AND ALUMINUM FRAME WITHOUT LAMINATION



RESIDENTIAL, ECOBATT™ GLASSWOOL INSULATION, DESIGNED BY NATURE

MORE CONSTRUCTION ADVANTAGES

THE "TRUE" GELCOAT ADVANTAGE!

"True classic performance gelcoat is the *best of the best* the RV industry has to offer. "True" gelcoat is thicker, stronger with higher impact resistance and flexural strength to virtually eliminate sidewall repairs. "True" gelcoat is the *only product that will retain its high gloss finish and includes side compartment and entry doors!*



5/8" TONGUE AND GROOVE, MARINE GRADE PLYWOOD FLOOR

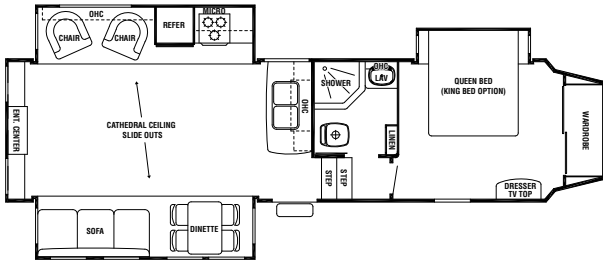


90°+ TURNING RADIUS

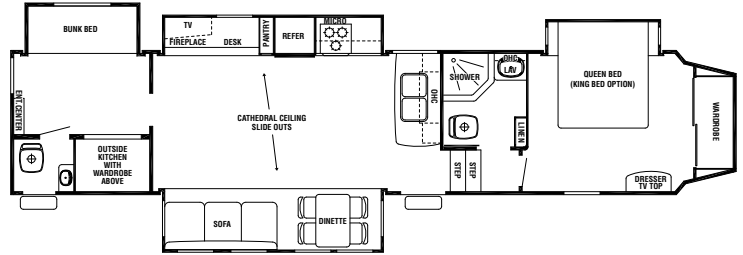
You'll love the great towing and handling characteristics of the Silverback. The aerodynamic, front cap achieves a **FULL 90 degree (plus a little extra)** turning radius even when towed by short bed trucks. No more cumbersome sliding hitches to contend with. Accept no limited imitations!

SILVERBACK FLOORPLANS

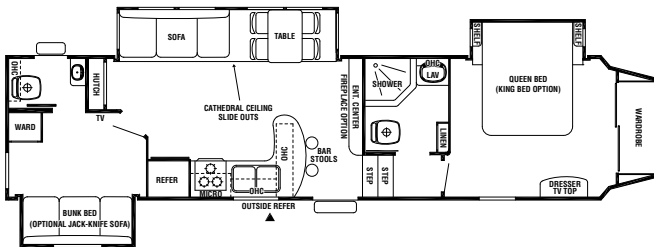
29RE



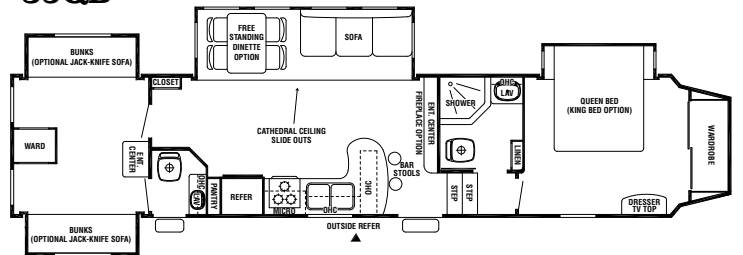
35K



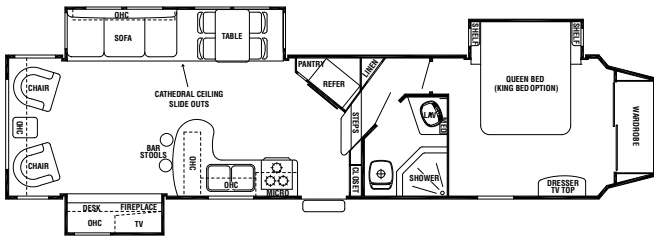
31B2



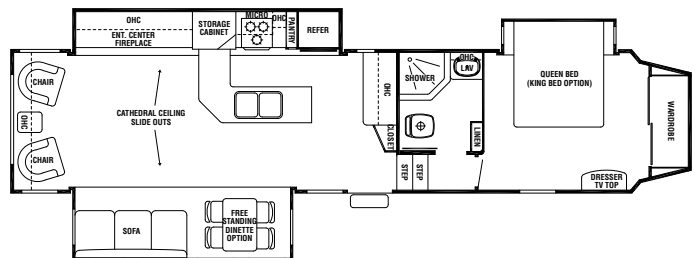
35QB



33L



35TS



SILVERBACK MODEL	29RE	31B2	33L	35K	35QB	35TS
Exterior Length	34' 7"	37' 4"	37' 3"	41' 0"	41' 0"	38' 9"
Exterior Height with Air Conditioner	12' 9"	12' 9"	12' 9"	12' 9"	12' 9"	12' 9"
Exterior Width	96"	96"	96"	96"	96"	96"
Front Bedroom Interior Height	6' 4"	6' 4"	6' 4"	6' 4"	6' 4"	6' 4"
Hitch Weight	1,615	1,585	1,870	1,490	2,000	1,870
Axle Dry Weight	8,175	9,040	8,655	10,775	10,184	9,776
Unloaded Vehicle Weight	9,790	10,684	10,525	12,265	12,184	11,464
GVWR	13,615	13,585	13,870	15,490	15,500	15,500
Gross Carrying Capacity	3,766	2,901	3,345	3,225	3,316	4,036
Dual Axles (2)	6,000#	6,000#	6,000#	7,000#	7,000#	7,000#
Electric Awning Size	15'	21'	21'	15'	21'	18'
Furnace Size	35,000 BTU	35,000 BTU	35,000 BTU	42,000 BTU	42,000 BTU	42,000 BTU
Demand Fresh Water Capacity	66	66	66	66	66	66
Black and Grey Water Capacity	3 (40 Gal.)	4 (40 Gal.)	3 (40 Gal.)	5 (40 Gal.)	5 (40 Gal.)	3 (40 Gal.)
Sleeping Capacity	6	6-8	6	7-9	8-10	6

SILVERBACK FEATURES

SILVERBACK EXPLORER PACKAGE:

LCD Flat Panel HD Ready Television, 12v. CD/DVD, MP3 Player, I-Pod Docking Stereo System with 2 Exterior Patio Speakers, 8 Cu. Ft. Refrigerator, Hide-a-Bed Sofa with Air Mattress, Over the Range Microwave with Vent, True Nobel Classic Fiberglass Gelcoat Exterior, Black Tank Flush, 16" Tires, E-Z Flex Suspension, Bathroom Breeze Power Fan in Bathroom, Rear Stabilizer Jacks, Tinted Safety Glass, Entire Water Filtration System, Cedar Creek Switch Control Center, Winegard HD Roof Satellite Prep

STANDARD FEATURES

- 10 Gallon Water Heater
- 12 Volt Heated Holding Tanks
- 15,000 BTU Air Conditioner
- 16" Aluminum Rims
- 50 Amp Converter with Charger
- All Solid Wood Fascia
- Bathroom Breeze Fantastic Fan
- Brace & Wire for 2nd Air Conditioner
- Cathedral Living Area Slide-Rooms
- Create-a-Breeze™ Fan with Thermostat & Rain Sensor in Kitchen
- Digital Thermostat for Heat & Air Conditioner
- Docking Station with Easy Access By-Pass Valves for the Water Heater Systems
- Enclosed & Insulated Underbelly
- Dexter E-Z Flex Rubber Equalization System with Grease Zerk
- Foam Core® Roof Moisture Barrier is More Expensive than Attic Vents
- Front Storage for Spare Tire
- Full Extension Drawer Roller Guides
- La-Z-Boy® Fabric Recliners (W/A)
- LED Tail Lights
- Lighted Entry Step
- New Interior—Newport Cherry
- Hide-A-Bed with Air Mattress
- Porcelain Toilet
- Serta® Residential Mattress
- "Soft Top" Vinyl Storm Doors

OPTIONS

- Washer / Dryer Prep (Combination Only) and 50 AMP Service
- Penguin 2nd Air Conditioner

- Exterior 12 Volt Stereo System
- Jack-Knife Sofa Replacing Bottom Bunk (35QB Only)
- Dinette Table Replacing Freestanding Table and Chairs
- King Bed
- Thermopane Windows
- Dirt Devil Central Vac System
- Fireplace (29RE,)

ALL ALUMINUM SUPER STRUCTURE

ROOF - CALCULATED R VALUE = 38 / 80° AMBIENT TEMPERATURE*

- Radiant Shield Insulation, 97% Reflective / 3% Emission
- Full Length 3/8" Wood Roof Decking for a Full Walk on Roof
- Triple Layer Insulation Supplements the Cohesive Retention Factors of Roof Decking and Rubber Membrane
- 2 x 2 - 16" OC 4" Truss Roof Frame Combined with Uniroyal® Silaprene
- 2 Ply - Tuff Ply Rubber Roof Membrane with Built in Fire Retardant and 12 Year Warranty
- Full Length Drip Rails from the Front to the Rear of the Unit
- Roof is Bolted to Sidewall with 5/16" x 3-1/2" Carriage Bolts
- Attic Vents for Air Circulation

SIDE WALLS - R VALUE 9

- Handmade 2" x 2" / 16" (or less) On Center Sidewalls and Individually Fastened Custom "L" Brackets Combined with Uniroyal® Silaprene Adhesives for a Strong Flexible Frame without Welding or Lamination. (475 PSI at 2" Per Minute, Marine Grade)
- "True" Fiberglass Classic Performance Plus Gelcoat on all Exteriors—The Best of the Best in Fiberglass. Don't Accept Hi-Gloss Fiberglass - Only True Gelcoat Stands the Test of Time.
- All Baggage Doors and Entry Doors are Made out of "True" Classic Performance Gelcoat to Prevent Uneven Aging of Your Unit!!
- Automotive UV Clear Coat Paint Coats each Refrigerator Vent to Prevent Early Discoloration (Guaranteed for 7 Years)
- Sidewalls are Bolted to the Floor with 5/16" x 6-1/2" Carriage Bolts at each Outrigger

- Glued R-7 Fiberglass Insulation Expanded to Full Capacity within the Sidewall Frame
- Designed by Forest River, a Unique Slide-Out Seal System for Tighter, Stronger Water Protection - First of Its Class - Compare It!
- 5 Direction Insulation in all Slide-Out Rooms

FLOORS - CALCULATED R VALUE = 38 / 80° AMBIENT TEMPERATURE*

- Radiant Shield Insulation, 97% Reflective / 3% Emission
- Triple Layer Insulation Enhances the Protective Values of Plywood, Vinyl, Carpet, Carpet Pads, Tank Heaters Etc.
- 3" Aluminum Frame Floor w/In-Floor Heat Ducting and Custom "L" Brackets Combined with Silaprene Adhesives
- 5/8" Tongue & Groove Plywood
- Cambered 10" I Beam "Z" Frame with Large Support Outriggers & Full Length Welds
- Darco Waterproof Underbelly (Fully Enclosed 4' x 8' ABS Removable Panels for Easier Access Into The Underbelly)

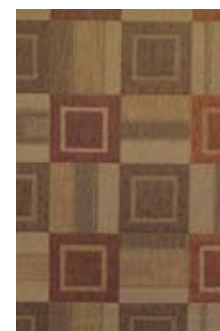
DECOR OPTIONS



RIO RUST



SAND DOLLAR



JETHRO RUST



HARDY SAGE



**The Dian Fossey
Gorilla Fund[®]**
International

The Silverback Fifth Wheel is named after the powerful mature male gorilla who, at 5-1/2 feet tall, can weigh up to 400 lbs. Found only in Africa, all gorillas are endangered and an important species within one of the world's most important ecosystems.

Cedar Creek is proud to announce its support of the Dian Fossey Gorilla Fund International (DFGFI). For every Silverback Fifth Wheel sold, Forest River/Cedar Creek will make a donation in your honor to help save gorillas.

After a Silverback Fifth Wheel purchase, you will have access to a special online gorilla adoption specifically designed for Cedar Creek. You will be able to revisit the adoption page monthly to read more about your adopted gorilla, other gorillas, and conservation stories to share with your family and friends throughout the year.

With Staff in the countries of Rwanda and the Democratic Republic of Congo, DFGFI is the only nongovernmental organization working in the field every day to protect gorillas from poaching, habitat destruction and diseases. For more information, go to www.forestriverinc.com/cedarcreek or go to www.gorillafund.org

Forest River's Pre-Delivery Inspection Facility is a state of the art testing facility which gives immediate daily feedback to production for quality assurance in every unit built by Cedar Creek



Travel Trailers

Fifth Wheels

Forest River
is proud to offer
**ROADSIDE
ASSISTANCE***
by Coach-Net[®]

Tent Campers

Motorhomes

SILVERBACK
By CEDAR CREEK



A Berkshire-Hathaway
Company

The Smart Choice for the Experienced RV'er

FOREST RIVER INC./CEDAR CREEK DIVISION

501 Hawpatch Road / Topeka, IN 46571

Ph: 260-593-2404 / Fax: 260-593-2447

On The Web at: www.forestriverinc.com

YOUR SILVERBACK DEALER

All illustrations and specifications contained in this literature are based on the latest product information at the time of publication. Forest River, Inc. reserves the right to make changes in prices, colors, materials, equipment and specifications at any time without notice and assumes no responsibility for any error in this literature. All units are shipped F.O.B. Topeka, Indiana. • CONSULT YOUR LOCAL DEALER FOR WARRANTY INFORMATION

F-66-281 2010 Forest River, Inc. Litho U.S.A.