

CEDAR CREEK

By Forest River

THE SMART CHOICE FOR
THE EXPERIENCED
RV'ER.



36RE





DESIGNED FOR LIVING.

ORIGINAL CORIAN®
COUNTERTOPS



36RE



All Cedar Creek kitchens feature True Corian® Countertops. This U-shaped kitchen features a roll-up cabinet door that's perfect for storing bread and other staples.



This Hoosier cabinet includes a ceiling-to-floor pantry along with an appliance garage to store your kitchen gadgets and a 2-foot extendable Corian® countertop for extra workspace.

Cedar Creek ~ 36RE

Experience the pinnacle of RV living with custom designed interiors that abound with beauty, comfort, and amenities. The 36RE is one of eight spacious floorplans that offer residential features and fine quality throughout.

Exquisite solid cherry wood cabinetry throughout the interior provides an abundance of beautiful storage space.



▲ The quality Dimplex® fireplace is the focal point of this gracious living room while La-Z-Boy® Microfiber recliners provide cozy seating. Lots of natural lighting emanates from the expansive windows which are the largest in the industry.

► This center island kitchen is an efficient step saver with everything you need conveniently arranged for quick and easy meal preparation. Two stools are available for snacks and light meals.



36RD5S



A



B



C

A. This lovely kitchen features an elegant smoked mirror backsplash. All Cedar Creek kitchens have large size residential appliances, including a 9 cu. ft. refrigerator and 30" microwave, full twin stainless steel under-mounted sinks, and an abundance of extra deep cabinets for storage.

B. The freestanding dining table is surrounded with large windows for pleasurable dining with a view. Another important feature is the aisle door. This extra door allows an exterior off side exit as an added safety and convenience feature.

C. A beautifully detailed archway with framed glass pocket doors provides passage from the kitchen into the private living room where you'll find a large main slide-out with a full 6'7" ceiling height. Slide-out fascias are constructed of solid wood instead of vinyl wrapped foam used in other brands.

Carousel Triple Tier Hanging Rails, Belt Organizer, and a Removable Laundry Hamper Compliment Cedar Creek's Residential Bathroom and Bedroom. Creating an Oasis of Storage, Comfort and Convenience Never Seen Before in a Fifth Wheel!

16



7

CEDAR CREEK FEATURES



"Level-Up"™ 6 Point Hydraulic Stabilization System



RATED #1 CUSTOMER PREFERRED OPTION

Leveling and stabilizing a fifth wheel has never been an easy task until now. The patent pending "Level-Up" technology makes set ups easier, faster, and a lot safer than the old style 4 point system. With the IR wireless remote you can visually observe coach and slide-room movement, side to side and front to back.

Stabilization is one of the most important features of this option, allowing no movement within the coach once the legs have been set. The system is even powerful enough that if you need to achieve a level unit, with the tires off of the ground, this system can handle it.

1. **REMOVABLE "SOFT TOP" VINYL STORM DOORS** allow light and visibility without losing cooling or heating. (CCEP*)
2. **LA-Z-BOY® MICROFIBER RECLINERS** — Comfort is what they do!
3. **36B4 EXTERIOR KITCHEN OPTION** includes a 2 burner cooktop, kitchen sink, outlets, drawers, cabinets and a huge work surface for families and friends that love playing outdoors.
4. **WIRELESS REMOTE CONTROL** — A Forest River exclusive that has controls for the electric awning, slide-rooms, all jacks including the optional "level-up", and security entrance lighting.
5. **20" TALL GRAVITY DISCHARGE PORCELAIN TOILET** with Power Flush Rim Wash.
6. **THULE® EXTERIOR TV MOUNTING BRACKET** designed for 19" LCD Televisions. In Addition, (1) Exterior 110v. outlet and cable hook-up allow continuous viewing whether you are inside or outside.
7. **CEDAR CREEK'S ORIGINAL DESIGN "Z" FRAME.** This frame gives our customers over 100 cu. ft. of **STORAGE SPACE**, turning their front storage compartment into a front storage shed.
8. **ALUMINUM METAL IS WRAPPED** all the way to the frame for a clean, crisp looking exterior.
9. **AUTOMOTIVE FRAMELESS WINDOWS** give this coach's exterior an elegance only seen in high dollar fifth wheels.
10. **FREE STANDING TABLE, LEAF EXTENSION, AND HIDDEN STORAGE CHAIRS - STANDARD.**
11. **DOCKING STATION** includes outside shower, black tank flush, and water tank fills for centralized convenience. (CCEP*)
12. **AMANA SEALED BURNERS** create the ultimate in function without sacrificing beauty with our standard oven with residential glass front. Amana is the natural choice for the person looking to create the ultimate kitchen environment. High output superburners, heavy duty removable grates, and piezo ignitors are also included on these sealed burner models.
13. **9100 SERIES A & E ELECTRIC AWNING** provides outside comfort. (CCEP*)
14. **DIRT DEVIL® CV950 CENTRAL VAC CLEANING SYSTEM** with VacPan™ automatic dustpan at entry door.

*CCEP: Cedar Creek Explorer Package

DECOR OPTIONS

COGNAC TAUPE

Bedroom



Living Area



OAK LEAF

Bedroom



Living Area



SATIN SPRUCE

Bedroom



Living Area



WHEAT TAPESTRY

Bedroom



Living Area



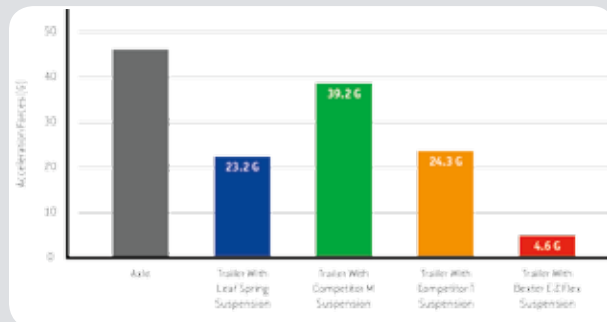
ALUMINUM FRAME CONSTRUCTION

Dexter
EZ Flex™
Suspension
Standard



Side Walls: R-Value = 9

- Handmade 2 x 2 - 16" (or less) On Center Sidewalls with Individually Fastened Custom "L" Brackets Combined with Uniroyal® Silaprene Adhesives for a Strong Flexible Frame without Welding or Lamination. (475 PSI at 2" Per Minute, Marine Grade)
- Nobel Classic True Gelcoat Exterior — The Best of the Best in Fiberglass
- All Baggage Doors and Entry Doors are Made out of Nobel Classic True Gelcoat Exterior to Prevent Uneven Aging of Your Unit
- Automotive UV Clear Coat Paint, Guaranteed for 7 Years, on all Refrigerator Vents, Microwave Vents, and Entry Door Window Frames, Preventing Early Discoloration
- Sidewalls are Bolted to the Floor with 5/16" x 6-1/2" Carriage Bolts at each Outrigger
- Glued R-7 Fiberglass Insulation Expanded to its Full Capacity within the Sidewall Frame
- Designed by Forest River, a New Unique Slide-Out Seal System for Tighter, Stronger Water Protection — First of its Class — Compare It!
- 5 Direction Insulation in all Slide-Out Rooms



SUPERIOR PERFORMANCE E-Z FLEX® HEAVY DUTY EQUALIZATION SYSTEM

Compare for yourself. Illustrated here are the acceleration forces experienced by an axle and trailer while traveling over railroad tracks at 30 MPH. The E-Z Flex® System provides up to an 80% reduction in forces on the trailer frame versus a standard equalizer. In addition, E-Z Flex® significantly outperforms all other competitors in the same road test. The result? A smoother, more protective ride for your trailer and its cargo.



Cold room tested to zero degree Fahrenheit with standard insulation and heating pads with no tank freezing!



Floors: Calculated R-Value = 38/80 Degree Ambient Temperature

- 3" Aluminum Frame Floor with In-Floor Heat Ducting and Custom "L" Brackets Combined with Uniroyal® Silaprene Adhesives
- 5/8" Tongue and Groove Plywood, Marine Grade
- Cambered 10" I Beam "Z" Frame with Large Support Outriggers and Full Length Welds
- The Tongue and Groove Plywood Floor is Attached to the Aluminum Frame with Silaprene and Screwed every 5"
- Darco Waterproof Underbelly
- Fully Enclosed 4' x 8' ABS Removable Panels for Easier Access into the Underbelly
- Triple Layer Insulation Enhances the Protective Values of Plywood, Vinyl, Carpet, Carpet Pads, Tank Heaters, etc.
- 12V. Tank Heaters on all Tanks
- Radiant Shield Insulation* - 97% Reflectivity, 3% Emission

Roof: Calculated R-Value = 38/80 Degree Ambient Temperature

- Full Length 3/8" Wood Roof Decking for a Full Walk-On Roof (Screwed - Not Stapled)
- Triple Layer Insulation Supplements the Cohesive Retention Factors of Roof Decking and Rubber Membrane.
- 2 x 2 — 16" OC - 4" Truss Roof Frame Combined with Uniroyal® Silaprene
- 2 Ply — Tuff Ply Rubber Roof Membrane with Built-In Fire Retardant
- Full Length Drip Rails with Spouts from the Front to the Rear
- Roof is Bolted to Sidewall with 5/16" x 3-1/2" Carriage Bolts
- New 3" Roof Radius
- Radiant Shield Insulation* - 97% Reflectivity, 3% Emission
- Fully Ducted 15,000 BTU High Output A/C with Cold Air Returns that are also Braced and Wired for an Optional Ducted 2nd A/C

*Transitioned in as standard in the Fall and Winter of 2010

State-of-the-art construction techniques along with top grade building components give Cedar Creek its reputation for long-lasting quality.



ALUMINUM STUDDED SIDEWALLS AND ROOF TRUSSES ON 16" CENTERS OR LESS



ALUMINUM FLOOR STUDS



TRUE NOBEL CLASSIC FIBERGLASS GELCOAT EXTERIOR. TRULY THE BEST OF THE BEST IN FIBERGLASS. ACCEPT NO IMITATIONS.

CONSTRUCTION FEATURES



ALUMINUM WINDOW FRAMES



5/8" TONGUE AND GROOVE, MARINE GRADE PLYWOOD FLOOR

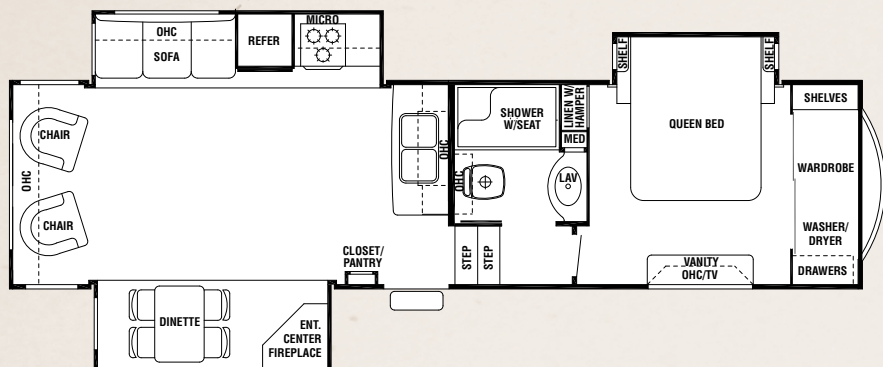


RESIDENTIAL, ECOBATT™ GLASSWOOL INSULATION, DESIGNED BY NATURE

CEDAR CREEK

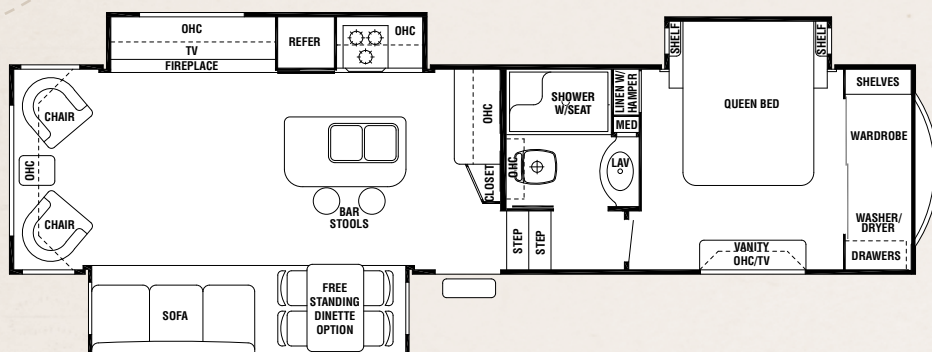
FLOORPLANS

FYI



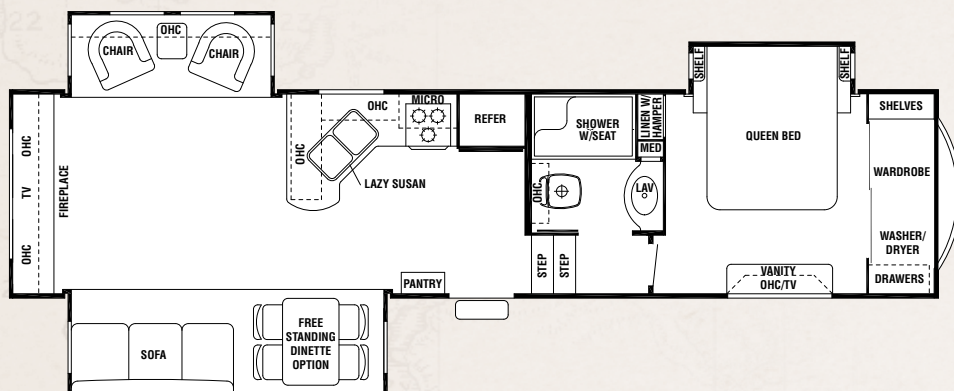
30RL

Exterior Length 34' 3"
 Hitch Weight 2,220
 Axle Dry Weight 8,740
 Unloaded Vehicle Weight . . 10,960
 GVWR 14,220
 Gross Cargo Capacity. . . . 3,008
 Electric Awning Size 16'



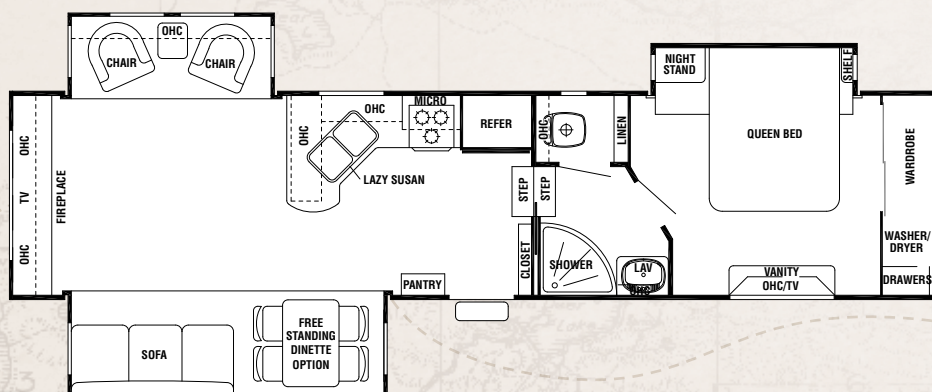
34RLSA

Exterior Length 36' 8"
 Hitch Weight 2,085
 Axle Dry Weight 9,484
 Unloaded Vehicle Weight . . 11,569
 GVWR 14,085
 Gross Cargo Capacity. . . . 2,516
 Electric Awning Size 16'



34R

Exterior Length 37' 6"
 Hitch Weight 1,760
 Axle Dry Weight 9,551
 Unloaded Vehicle Weight . . 11,311
 GVWR 13,760
 Gross Cargo Capacity. . . . 2,449
 Electric Awning Size 18'

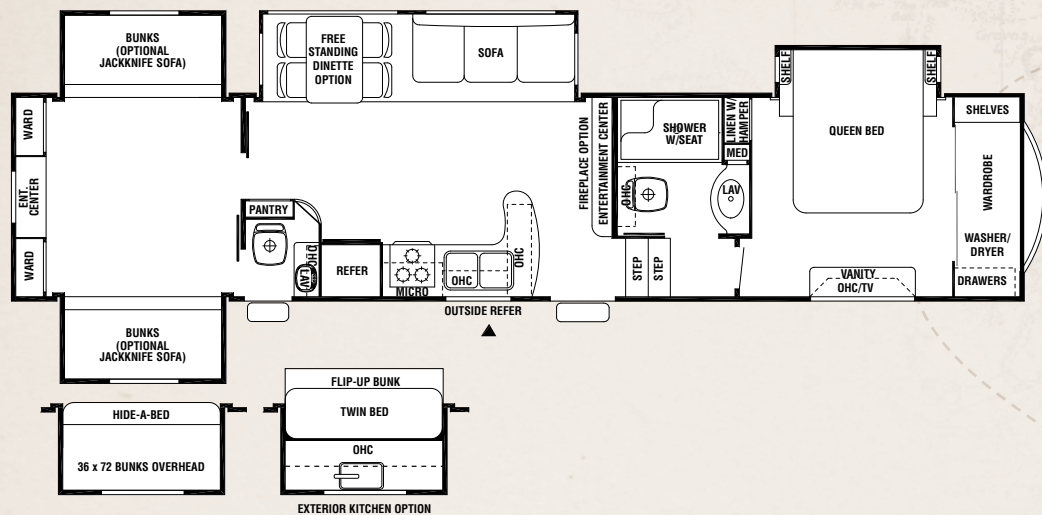


34SB

Exterior Length 37' 6"
 Hitch Weight 1,760
 Axle Dry Weight 9,551
 Unloaded Vehicle Weight . . 11,311
 GVWR 13,760
 Gross Cargo Capacity. . . . 2,449
 Electric Awning Size 18'

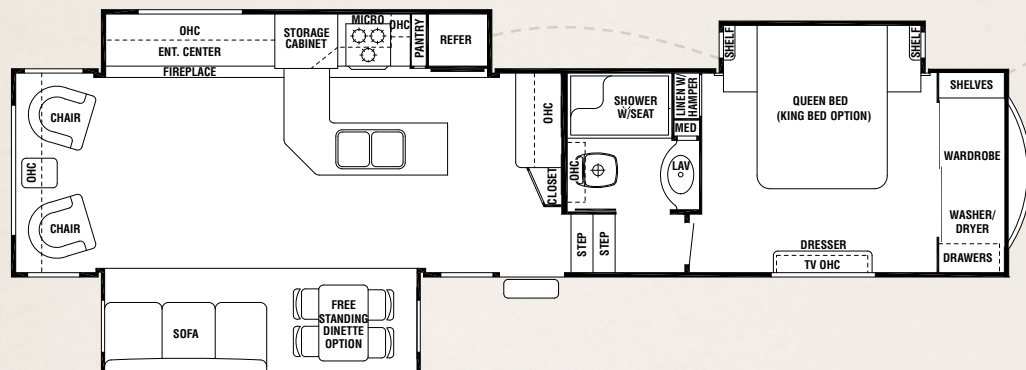
Exterior Height w/AC 12' 11"
 Exterior Width 96"
 Front Bedroom Int. Height 6' 8"
 Axles (2) 6,000#/7,000#

Furnace Size 35 - 42 BTU
 Demand Fresh Water Cap. 66 Gal.
 Black/Grey Water Cap. 120 - 160 Gal.
 Sleeping Capacity 4 - 9



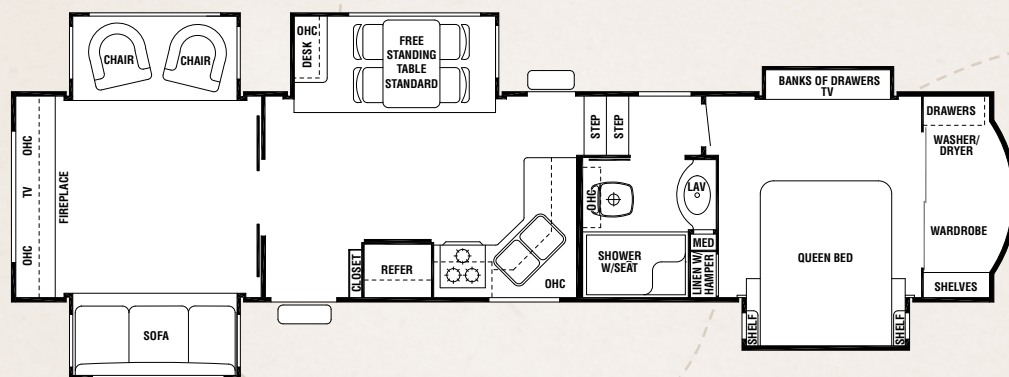
36B4

Exterior Length 41'
 Hitch Weight 2,244
 Axle Dry Weight 10,894
 Unloaded Vehicle Weight 13,134
 GVWR 15,500
 Gross Cargo Capacity 2,366
 Electric Awning Size 21'



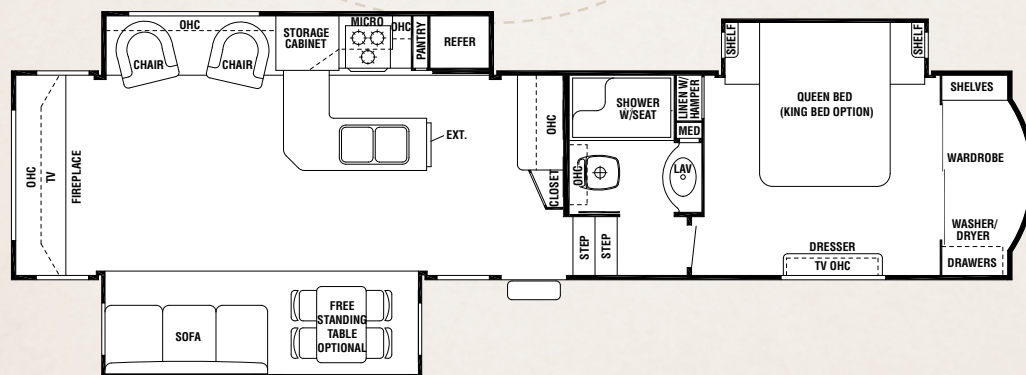
36CKTS

Exterior Length 39'
 Hitch Weight 2,389
 Axle Dry Weight 9,687
 Unloaded Vehicle Weight 12,076
 GVWR 15,500
 Gross Cargo Capacity 3,405
 Electric Awning Size 18'



36RD5S

Exterior Length 39' 6"
 Hitch Weight 1,763
 Axle Dry Weight 10,563
 Unloaded Vehicle Weight 12,416
 GVWR 15,500
 Gross Cargo Capacity 3,084
 Electric Awning Size 18'



36RE

Exterior Length 39'
 Hitch Weight 2,431
 Axle Dry Weight 9,664
 Unloaded Vehicle Weight 12,095
 GVWR 15,500
 Gross Cargo Capacity 3,405
 Electric Awning Size 18'

CEDAR CREEK STANDARD FEATURES

EXTERIOR FEATURES

- #30 Gas Bottles with Automatic Change Over
- (2) Scare Lights - Door Side and Off Door Side w/Separate Wall Switches
- 12V. Battery Disconnect
- 15,500 Lb. Rated Extended Pin Box
- Fully Ducted 15,000 BTU HP Duo-Therm™ Air Conditioner with Cold Air Returns— The Most Powerful RV Air Conditioner in the Industry
- 16" Tire Underbelly Carrier
- 12V Storage Lights in Below Bath Deck and Front Storage Areas
- 30", True Gelcoat, 1" Thick Compartment Doors for Side-to-Side Storage, Turning your Front Storage Area into a Front Storage Shed
- 30" Radius Front Door Entry w/Deadbolt Lock and Drip Cap with "Soft Top" Entry Storm Doors that Allow Full View to the Outdoors
- 50 Amp Service
- 65 Amp Power Converter
- All Exterior Compartment Doors, Exterior Lights and Corners are Sealed with Butyl Rubber & Silicone - Proven to be the Best Sealant in the Industry - No Putty or Foam Tape
- Aluminum Rims*
- Cambered 10" I-Beam with Unique "Z" Frame Storage (30RL, 34RLSA)
- Cambered 10" I-Beam with an Additional 2" Under Mounted Beam with Unique "Z" Frame Storage (34SB, 34R, 36RE, 36RD5S)
- Convenient Single Access Phone Jack & Cable TV Connections
- Enclosed and Double Layer Insulated Underbelly with Radiant Shield Thermo-Foil (R38)
- Folding White Enamel Assist Handle at Entry Door
- Tinted Safety Glass, Automotive Frameless Windows with Functional Slide Room End Wall Windows (Brand X End Wall Windows are Fixed in all Slide Areas)
- Hard Heat Duct Boot Leading into your Front Upper Deck for 2x More Efficient Delivery of Heat
- Hitch Light
- Hydraulic Front Landing Jacks Placed Outside the Frame with 8" Round Landing Pads
- LED High Bright Lights on the Front and Rear of the Coach
- Lighted Entry Step
- Remote Control System which Controls Lights, Slide-Outs, Front & Rear Jacks and Electric Awning
- Selector Switches for Slide-Rooms
- True Gelcoat Lockable Clamp Ring Exterior Baggage Doors with Thumb Grip & Door Catch
- "Thule" Exterior Mounting Bracket with TV Prep and 110 Outlet*
- "Soft Top" Vinyl Storm Doors
- Porch Light
- Radius Wrapped Bottom Metal Skirt
- Smooth, Easy Operating, Easy Grip, Entry Steps - Extra Wide for Confident Footing

- UV Automotive Paint Coating is Placed on Refrigerator Vents to Prevent Premature Color Changes
- White Enamel Rear Ladder

DEXTER AXLES/BRAKES/SUSPENSION PERFORMANCE & SAFETY!



- Nev-R-Adjust™ Brakes are Always Properly Adjusted for Improved Stopping Power in Half the Distance
- E-Z Flex™ Rubber Equalization System with 1/2" Link Plates and 8 Grease Zerk per Side
- Heavy Duty Axles with Bronze Bushings in Shackles (No Plastic Bushings Like Our Competitors)

INTERIOR FEATURES

BEDROOM

- 19" LCD Television with Tip-Out "Thule" Mounting Bracket - Front Bedroom Only
- 9 - 8" Deep, Drawers in Main Bedroom Area
- Bedroom Roof Vent
- Bedroom Slide - 60 x 80" Queen Bed (Optional 72 x 80" King Bed), 2 x 2 Finished Bed Base w/Gas Lifts, Side Ventilation Windows, Designer Residential Style Headboard, with a Large Capacity Storage Area under the Bed
- Braced and Wired for 2nd Air Conditioner
- Ceiling Mounted, Individually Switched, Overhead Reading Lights
- Full 6'8" of Headroom
- Luxurious Bedspread and Pillows which Includes Elastic Mattress Grips, Pillows, and Shams with Solid Wood Shelves
- One of the Deepest Closets in the Industry
- Serta® Dreamscape Residential Mattress
- Solid Wood Dresser Top (No Formica)
- Washer/Dryer Prep that Allows for Either Combination or Stack Washer/Dryer

KITCHEN

- 9 Cu. Ft. Refrigerator with Exterior Digital Temperature Gauge & Thermostat
- 30" Over the Range Microwave with Built-in Vent
- Amana Residential Sealed Burner Oven with Glass Oven Door, High Output Superburner, Heavy Duty Removable Grates, and Piezo Ignition.
- Congoleum® Diamondflor® Armorguard® Vinyl Floor Covering
- True Corian® Countertops with Full Twin Stainless Steel Under-Mounted Sinks*
- Crown Molding Complementing all Overhead Cabinets in Kitchen Area
- Dirt Devil® Central Vacuum System with Attachments
- Entire Water Filtration System which Includes Tank and City Water - Even Your Shower Water is Filtered
- Free Standing Table with Hidden Table Leaf Extension and 4 Chairs with Hidden Storage

- Larger 66 Gallon Demand Water System*
- Pantry (Where Applicable)
- Outside Kitchen (36B4 Only)
- Residential Style Roller Drawer Guides with Travel Locks - No Binding
- Silverware Drawer
- Solid Cherry Drawer Fronts w/Baltic Birch Sides and Ends Convenient 5" & 8" Sizes
- Solid Cherry Arched Cabinets Doors with Hardwood Cherry Styles*
- Toe Kicks at the Base of the Kitchen Cabinet
- Hoosier Cabinet (34RLSA, 36CKTS, 36RE) with 2' Extendable Countertop & Appliance Garage

MISC. APPLIANCES

- 12 Gallon Gas/Electric Water Heater*
- LP Gas Detector
- Carbon Monoxide Detector
- Dometic Comfort Control Center II
- Smoke Detector
- Single Residential Digital Thermostat for Heating and Cooling
- Solid State 65 Amp Power Converter
- Suburban 35,000 & 42,000 BTU Furnaces
- Wall Mount Monitor Panel
- Water Heater By-Pass System for Winterization

LIVING ROOM

- Ceiling Fan with Light
- Create-A-Breeze Fantastic Fan w/Thermostat and Rain Sensor in the Kitchen
- Day/Night Shades
- Dimplex® Fireplace - The World Leader in Electric Fireplaces
- Lambrequin Style Valance with Curtains Throughout Except Bedroom
- La-Z-Boy® Fabric Recliners
- LP Detector
- Main Slide-Room Height 6'7"
- Queen Ann Style End Table - Where Available
- Solid Wood Fascias - Most Competitors have Switched to False Wood Foam
- Trackless Plush Pile Carpeting in all Living Room and Bedroom Areas
- TV Cable, Satellite, and Phone/Data Port Jack in Living Area
- Upgraded Lighting at Sofa and Decorative Overhead Dinette Light

BATHROOM

- 18" Tall Porcelain Toilet with Circular Flow Flush System*
- 2"/10 Blade Bathroom Breeze Power Bath Vent with Convenient Wall Switch
- Designer Metal, 3 Tier Bath Towel Rack and Toilet Paper Holder
- Large Bathroom Mirror Medicine Cabinet w/Overhead Make-Up Lights
- One-Piece Radius, Residential Style, Fiberglass Shower w/Seat that won't Deteriorate with Age
- Skylight over Tub
- Wall Switched Ceiling Lights in Key Locations

JUST A FEW OF THE ADDITIONAL OPTIONS

- 2nd Ducted Penguin Air Conditioner for Two Total
- 13 Cu. Ft. Side-by-Side Refrigerator
- 18 Cu. Ft. Electric Refrigerator w/Inverter

- 30" Convection Oven/Microwave with 3 Burner Cooktop
- 72 x 80" King Size Bed with Serta® Mattress
- A & E Electric One Touch Electric Awning w/Remote & Wind Sensor
- Awning Toppers
- Bike Rack Hitch
- Create-A-Breeze Fantastic Fans with Thermostat and Rain Sensor in the Bedroom Area
- Dinette in Place of Free Standing Table and Chairs
- Dometic Portable Ice Maker
- Exterior 12 V. Stereo System with 2 Waterproof Speakers
- Exterior Paint Package—Creekside, Custom, or Full Body "Touring Edition"
- Jackknife Sofa Replacing Bottom Bed with Hinged Upper Bunk (36B4)
- Hide-A-Bed Sofa in Rear Bedroom (36B4)
- Leather La-Z-Boy™ Rocker Recliners
- "Level-Up" Hydraulic Stabilization System
- LP Generator Prep w/Carbon Monoxide Detector (Requires 50 Amp Service)
- Outside Kitchen
- Onan 5.5 Marquis Gold LP Generator
- Slide Room Awning Toppers
- Splendide® Combination Washer/Dryer
- Splendide® Stackable Washer & Dryer - Wired Individually to Allow Simultaneous Wash & Dry Cycles
- Thermal Pane Windows
- Trail Air™ Air Ride Hitch Coupler
- Trump Luxury Queen And King Mattress

CEDAR CREEK EXPLORER PACKAGE WILL INCLUDE:

- (1) LCD Flat Panel HD Television with Full Dolby Digital
- Dolby Prologic
- Surround Sound Stereo - DVD/CD/Tuner and MP3 Player
- Central Docking Station
- 30" Residential Microwave
- 1" Insulated Baggage Door with Slam Door Latches
- "Soft Top" Vinyl Storm Doors
- Hide-a-Bed with Air Mattress
- True Gelcoat Exterior
- Black Tank Flush
- 16" Tires
- SuperLube® Bearing System
- E-Z Flex Suspension
- Rear Cap
- 15,000 BTU Air Conditioner
- Large Surface 12V. Heating Pads on all Tanks
- Fantastic Fan with Rain Sensor in the Kitchen
- 9100 Electric Awning
- Rear Electric Jacks
- Tinted Safety Glass
- Entire Water Filtration System
- Cedar Creek Switch Control Center
- Winegard® HD Ready Pre-Wire
- One Year of Coach Net Roadside Assistance

*Transitioned in as standard in the Fall and Winter of 2010

EXTERIOR GRAPHICS OPTIONS



STANDARD GRAPHICS



CREEK SIDE PAINT



CUSTOM PAINT



"TOURING EDITION" FULL BODY PAINT

Full Body Paint, adorned with Cedar Creek graphics, will turn heads wherever you travel. This bold new exterior option is offered along with our Standard Graphics, Creek Side Paint, and Custom Paint choices.

Forest River Encourages You to Buy Locally

Forest River, Inc. strongly encourages our retail customers to purchase from their local dealership whenever possible due to the following factors:

- Our dealers are, as a rule, independently owned and operated businesses. Outside of those customers they personally sold products to, they are not contractually obligated to perform warranty service on Forest River products that were purchased elsewhere. There **may** be an occasion that you would be required to return to the point of purchase to satisfy warranty requirements.
- Although many dealerships will eventually service products not purchased at their place of business, they will usually take care of their customers and other Forest River customers who are traveling away from their local dealer as they would their own.
- Local purchases allow a customer to establish a relationship with a dealer close to home. This relationship provides the customer with a convenient location for service and support from a "home town" professional.

- The opportunity for a thorough PDI (Pre-Delivery Inspection) and product orientation is an additional benefit of buying from your local dealer, further providing the opportunity for refresher courses or the ability to get questions answered much more conveniently.

- For our Canadian customers, there are also requirements which must be met to bring an RV purchased out of the country to their home. Although not insurmountable, these requirements may involve such things as additional inspections and certifications, taxes and fees. Your local Canadian dealer is a professional at meeting these requirements.

Forest River's goal is for all RV owners to fully enjoy their RV experience. In light of this goal, and considering the advantages of buying local, we encourage you to be thorough when determining what product to purchase and which dealer to purchase it from as both are key to your ultimate satisfaction and the realization of your dreams.

Travel Trailers

Fifth Wheels

Forest River
is proud to offer

**ROADSIDE
ASSISTANCE***

by Coach-Net®

Tent Campers

Motorhomes



Scan this barcode using a QR Reader on your smart phone to learn more about Forest River.

YOUR CEDAR CREEK DEALER

CEDAR CREEK

Forest River, Inc.

501 Hawpatch Road / Topeka, IN 46571

Ph: 260-593-2404 / Fax: 260-593-2447



A Berkshire-Hathaway Company

ON THE WEB AT:
www.forestriverinc.com

All illustrations and specifications contained in this literature are based on the latest product information at the time of publication. Forest River, Inc. reserves the right to make changes in prices, colors, materials, equipment and specifications at any time without notice and assumes no responsibility for any error in this literature. All units are shipped F.O.B. Topeka, Indiana. **CONSULT YOUR LOCAL DEALER FOR WARRANTY INFORMATION.**

F-66-362

2011 Forest River, Inc.

Litho U.S.A.