

2008



Citation

S U P R E M E
Truck Campers

North America's Best

POLAR-PAK ❄️
THE SUB-ZERO SOLUTION



Canada's Best! Don't Settle for Less!



Shown above is the very spacious 100" wide body Model 1060 in the attractive yet durable Calypso Interior. The spacious "U" shaped dinette option provides additional seating capacity. General Coach Polar Pak Campers are built for all season use and tested to -30°C

Supreme Livability

Experience the comfort and livability only Citation offers. Large, solar reflective, double glazed thermopane windows provide cozy comfort in extreme cold or hot weather conditions. Dual pane, residential skylights with a lifetime warranty brighten the interior. Spacious countertops, large sinks with a residential "Taymor" faucet, numerous drawers and abundant cupboards provide superb storage. 60"x 80" residential "Eurotop" mattresses allow extra sleeping comfort. "Whisper King" water pumps lessen noise and vibration in water lines. The extras you can't see are what set Citation apart from the competition. These and the exclusive *Polar Pak features are the best in the industry by far!

“ The extra space given with the slide-out. Love the convenient floorplan, skylight, and the quality materials used - No particle board. The Double Glazed windows are good also.

Paul R. - Portland, Oregon

”



Model 860 Slide-Out shown above in the durable Calypso interior. An optional mirrored wardrobe in the bedroom provides superior closet space. A reversible Fantastic Fan constantly changes the air throughout the camper.



We are **General Coach**, a division of Thor Industries Inc., a western Canadian company that manufactures the well known Citation brand of quality recreational vehicles. For over 57 years we have been consumer established as builders of high value, superior quality RV's with proven high resale value.

Because we are a limited capacity production company we do not mass produce our products allowing us to ensure strict quality control standards which, in turn, ensures your comfort and satisfaction. Residential quality components and residential style construction techniques are utilized by skilled, conscientious, long term employees dedicated to quality workmanship.



Citation by General Coach is designed for recreational use in western Canadian climate and conditions with standard features second to none. Your peace of mind with your purchase decision is reinforced by Citation's **Six Year Limited Structural Integrity Warranty**.

Why a Thor Product Is Your Best RV Value.

Thor Industries, Inc., proudly traces its history back nearly seventy years to the pioneering days of the RV industry with the founding of Airstream, the industry's oldest and most renowned brand. Our total commitment to quality and our philosophy of putting our customers first has led to our continuous growth; today Thor is the largest manufacturer of travel trailers and fifth wheels, a major manufacturer of motorhomes and the largest builder of small and midsize buses in North America. Thor's strong financial condition and years of solid growth are your assurance that we will be here to serve you for years to come. We think this extra peace of mind is important when you are making a significant investment. **Our customers are always #1 with us.**

Supreme Satisfaction



The popular 10'8" Model shown above in the modern Cha Cha Interior provides all the amenities of home in a non-slide model. All models excluding the 9'2" are 8'4" in width which provides spacious livability not found in other campers. You'll marvel at the storage space in this model including superior wardrobes and large pull-out drawers on steel guides. The kitchen is highlighted by a long kitchen counter, large cupboard doors with open storage, a double pull-out can storage rack and modern looking name brand appliances. The bathroom has a separate full height shower enclosure with an optional residential skylight.

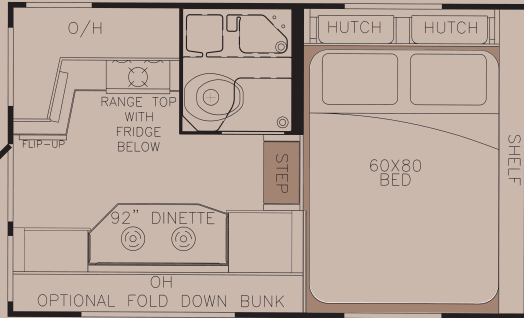
Don't take our word for it though! Read our customer testimonial page and discover how our customers enjoy the unique features found only in our campers and how the construction techniques hold up to the rigors of road and climate conditions throughout North America.

A buying decision you'll never regret!

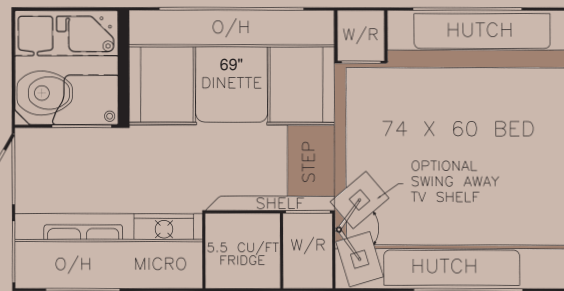
CITATION SUPREME 2008 FLOOR PLANS

Suitable for Heavy-Duty Short Box Trucks 100" Wide Body

Model 780 Polar Pak

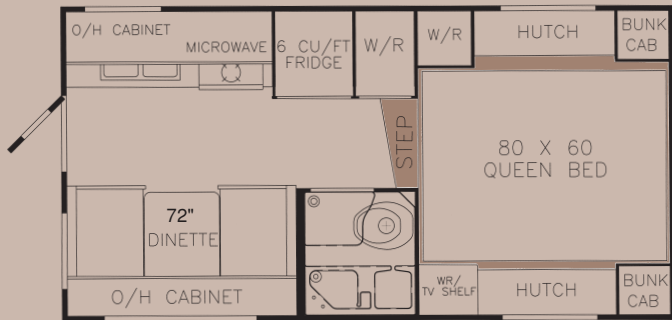


Model 9'2" 96" Wide Body

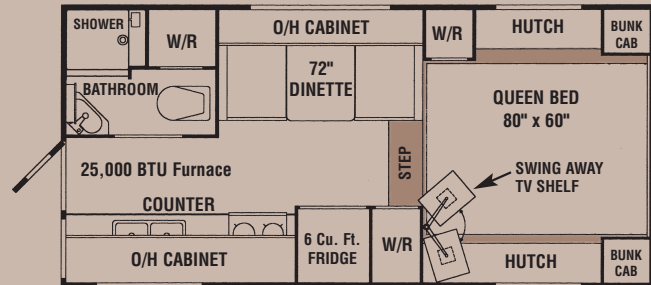


Suitable for Heavy-Duty Short Box Trucks.
*See dealer for Polar Pak features.

Model 9'6" Polar Pak 100" Wide Body



Model 10'8" Polar Pak 100" Wide Body



Model 990 Polar Pak



100" Wide Body



Optional 79" Long
Dinette available on 990

Model 860 Polar Pak

100" Wide Body



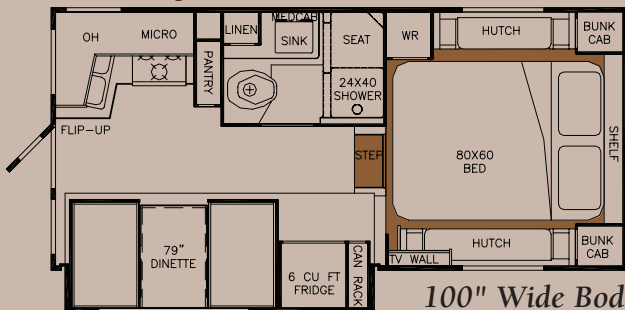
Suitable for Heavy-Duty
Short Box Trucks



Optional Bedroom
available on 860
and 1050

Model 1050 Polar Pak

100" Wide Body



Model 1060 Polar Pak

100" Wide Body



100" Wide Body

The manufacturer reserves the right to improve or modify the product which may change specifications, designs or prices.
Information contained herein is from data available at time of printing. All products meet or exceed CSA or RVIA standards.

Optional U Dinette
Available Models 990, 1050, 1060

Production information, specifications, photography in this brochure were as accurate as possible at time of printing. Photographs may contain some features that are optional on your vehicle. Since we continually strive to improve our products, actual products may differ. Prices and specifications are subject to change without notice. All capacities are approximate and dimensions are nominal. All products meet or exceed CSA or RVIA standards. Check with your local dealer for a complete list of options and features on the model you are considering.

VEHICLE LOADING: Every effort has been made to provide the greatest number of options for the recreation vehicle owner. Along with these choices comes the responsibility to manage the loads that are imposed by the choices so that they remain within the truck manufacturer's specified chassis weight limits. Do not overload.

DRY WEIGHTS based on standard features; optional equipment not included.

WARNING: This information is intended as a guide only. Weights of individual vehicles may vary. Consult your owner's manual for complete loading instructions.

EXTERIOR

- Welded aluminum framed walls w/thermal barrier
- Vacuum laminated **Filon Fiberglass** wall construction
- High density block Styrofoam insulation R8 throughout
- Aerodynamic molded fiberglass front cap
- Quality 3M graphics
- Cab window
- Walk-on 2" vacuum laminated welded aluminum framed roof
- Dicor Vinyl roofing material
- Large J rail rain gutters
- Vacuum laminated insulated floor and subfloor
- Heated basement storage
- Radius insulated compartment doors
- Automotive quality clearance & tail lights
- Pre-wire for roof A/C, TV antenna and cable TV hook-up
- Solar panel pre-wire
- Exterior shower
- BBQ Quick Connect
- Solar Reflective Windows
- GFI patio receptacle
- Heavy duty camper tie downs
- Enclosed, molded battery compartment
- Radiused entrance door with Saf-T-View rear window and retainer arm
- Reinforced screen door w/kick panel
- Flush mount lock with deadbolt
- Fold-away assist rail
- Exterior entrance safety light
- Exterior lights on both sides
- Basement Storage Light
- Wide body 100" (n/a 9'2")
- **"Happi Jac" electric jacks** (opt. 780, 9'2")



- Mechanical jacks (opt. 780)
- Front safety bumpers
- Basement Storage Tray (opt. 780)
- Roof rack and ladder (opt. 780)
- Decorative white metal undersides

INTERIOR

- All plywood construction — no particle board
- Rugged "Diamond" floor linoleum
- Birch drawers with metal guides
- Solid beech cabinet doors mortise and tenon construction
- Beech-edged countertops and tables
- Stainless steel kitchen sink
- "Taymor" Residential faucet, lifetime warranty
- Cutting board/sink cover
- Pull-out can rack — most models
- Upholstered window valances
- Fabric night shades
- Stereo CD/DVD/POD Conn./Cables To TV Location (OPT 780)
- Microwave pre-wire
- Deluxe Atwood Stainless Steel Range
- Bifold Range Cover
- Norcold 6 cu.ft. frig (9'2"- 5 cu.ft., 780 - 3 cu.ft.) w/brushed aluminum door panels
- Deluxe Systems Monitor panel
- Fluorescent lights in kitchen and L.R.
- Escape window in bedroom
- Fantastic Fan — bedroom (opt. 780, 9'2")
- Eurotop Foam/Spring Mattress 9" thick
- Quality bedspread with pillow shams
- Side bedroom storage hutches
- Front bedroom storage cabinets
- Seamless fiberglass shower enclosure
- TV shelf swing-away (Std. 10'8")
- 32 amp power converter
- Propane leak detector

- Clock
- Whisper King water pump
- Antifreeze pick-up system
- Carbon Monoxide detector
- D.S.I. water heater 23L/6 Gal.
- Freeze resistant 1/2" waterlines
- 25,000 BTU furnace - DSI -Ducted
- 18,000 BTU furnace (780, 9'2") - DSI -Ducted

POPULAR OPTIONS

- ❖ Air conditioner w/heat strip, 11,000 BTU
- ❖ Aluminum bumper with triple step (N/A 780)
- ❖ Aluminum lift base for super duty truck
- ❖ Awning at entrance door
- ❖ Awning over slide
- ❖ Awning side box 9'
- ❖ Battery tray (N/A 9'2")
- ❖ Beds — twin
- ❖ Camper step
- ❖ Carpet floor - loose
- ❖ Electric Jacks - 780, 9'2"
- ❖ Generator pre-wire & pre-plumb (n/a 780, 9'2", 9'6")
- ❖ LCD TV 19" w/swivel arm
- ❖ Swivel arm only for LCD TV
- ❖ Microwave oven
- ❖ Residential skylite with blind in kitchen
- ❖ Residential skylite in bath (N/A 9'2", 990)
- ❖ Short Box Saddle bags (860, 9'2")
- ❖ Stereo/CD/DVD - 780
- ❖ Solar panel 120W
- ❖ Double glazed thermopane windows
- ❖ TV antenna with power boost
- ❖ TV shelf — swing away (9'2")
- ❖ TV shelf - swivel (780, 860, 1050)
- ❖ Water filter
- ❖ Wardrobe (mirrored) I.L.O. hutches (Model 860, 1050)
- ❖ Propane Tank 2x30 lb. - 780, 860, 1050, 1060

2008 FEATURES AND SPECIFICATIONS

Model	780	9'2"	9'6"	10'8"	Slide-Out Models			
					860	990	1050	1060
Floor Length (M./Ft.)	2.3/7'8"	2.7/9'0"	2.8/9'3"	3.2/10'5"	2.6/8'6"	3.0/9'9"	3.2/10'5"	3.2/10'6"
Overall Length (M./Ft.)	4.4/14'5"	5.1/16'9"	5.4/17'7"	5.8/18'9"	5.1/16'1"	5.5/18'1"	5.7/18'9"	5.8/18'10"
Exterior Width (M./Ft.)	2.5/8'4"	2.4/8'0"	2.5/8'4"	2.5/8'4"	2.5/8'4"	2.5/8'4"	2.5/8'4"	2.5/8'4"
Exterior Height (To top of ladder, (M./Ft.) opt. roof A/C - add 7")	2.7/8'8"	2.6/8'5"	2.6/8'6"	2.6/8'6"	2.6/8'6"	2.6/8'6"	2.6/8'7"	2.7/8'8"
Interior Height (M./Ft.)	2.0/6'6"	1.9/6'4"	2.0/6'6"	2.0/6'6"	2.0/6'6"	2.0/6'6"	2.0/6'6"	2.0/6'6"
Bedroom Height (M./Ft.)	1.2/3'10"	1.1/3'8"	1.2/3'10"	1.2/3'10"	1.2/3'10"	1.2/3'10"	1.2/3'10"	1.2/3'10"
Dry Weight (Kg.)	954 kg	1105 kg	1203 kg	1349 kg	1353 kg	1396 kg	1513 kg	1524 kg
Dry Weight (Lbs.)	2104 lbs.	2435 lbs.	2651 lbs.	2973 lbs.	2983 lbs.	3076 lbs.	3334 lbs.	3359 lbs.
Fresh Water (L./Gal.)	180/48	103/27	103/27	180/48	180/48	180/48	180/48	180/48
Grey Tank (L./Gal.)	95/25	68/18	68/18	68/18	95/25	145/38	145/38	145/38
Black Tank (L./Gal.)	95/25	74/19	84/22	84/22	95/25	123/32	123/32	123/32
LPG Capacity (Lbs./Gal.)	60/17.1 (OPTION)	40/11.5	40/11.5	40/11.5	60/17.1 (OPTION)	60/17.1 (OPTION)	60/17.1 (STD)	60/17.1 (OPTION)

CUSTOMER TESTIMONIALS

“ My wife and I just wanted to let you know how much we love our new General Coach camper. The dealer was very helpful and the whole purchase went well especially since we purchased site unseen. We were unable to pick up the camper in person so we had to have it shipped to Anchorage, Alaska. Our camper will be used year round here in Alaska. We have been very happy with our purchase since we have only been able to use it in winter weather so far. We have stayed nice and cozy in our camper with zero worries of freeze up even with negative farenheit temperatures. My wife loves being able to take a shower after snowmobiling all day. It's the best! Thanks for building such a wonderful camper.

Chad and Natalie S. - Anchorage, Alaska ”

“ We really appreciate the high quality of materials, assembly and the extremely thoughtful design of the camper. The interior has a residential-like ambience, very wide and airy, thanks to the oversized skylights. I feel that it would be rather difficult to improve on the this very well designed and built product. We are so happy we found out about General Coach.

Phil P. - Vacaville, California ”

“ I work for the dealership I bought the camper from. This was one of the first campers I saw come through the shop that I was very impressed with. The workmanship is great and better than most of the other campers that we see and work on. We liked the camper so much we talked my Dad into buying the same camper and he likes his as well.

Ben W. - Meridean, Idaho ”

“ Find it warmer than our Lance - Maybe that's the Canadian built part. Excellent storage areas.

S.N. Ltd. - Whitehorse, Yukon ”

“ We love our new camper. The dealer here has been excellent.

Siegfried S.- Prince George, British Columbia ”

“ I love the insulation everywhere. We love the skylight and the height of the cab above the bed. No claustrophobia at all.

Ken & Denise M. - Spokane Valley, Washington ”

“ We are very pleased with your product! We did our homework when it came to purchasing a new camper. It was between you and Arctic Fox. Your camper had the extra options (larger dinette/bed) and larger holding tanks that sold us on your product

Jerry & Nellie J. - Bellingham, Washington ”

“ We started looking in 2003 and after seeing this model, measured everything else to it and could not find anything better.

Keith and Sue B. - Priest River, Idaho ”

“ We love our General Coach camper. It's awesome. It was by far the best layout, the most spacious and what we were looking for.

Aaron and April S. - Manitou Springs, Colorado ”

“ Thanks for building a great camper!

J.R. S. - Oldtown, Idaho ”

“ We looked a long time, visited many dealers around Puget Sound area, checked websites and magazines – The combination of quality, features, price and a pleasant salesperson made us choose this product.

Loren T. - Port Orchard, Washington ”

“ We are really pleased with our new camper - the twin bed option is just great, as is the flat screen TV/DVD/CD player.

Bob and Kathleen H. - Enderby, British Columbia ”

“ We looked at several different brands but although they were in a similar price range none compared to the General Coach camper in terms of quality.

John S. - Couer d'Alene, Idaho ”

“ Overall, we are very satisfied with the camper especially the winterization. We slept in it in Prince George B.C. in the winter with a wind chill factor of -22 degrees and we were very warm and comfortable.

Mr. and Mrs. R.W. - Campbell River, British Columbia ”

6 Year Limited Structural & 2 Year Component Warranty

General Coach provides you with a two-year limited warranty on your truck camper and General Coach also includes a six-year limited warranty which covers the structural integrity of your truck camper. Additionally our major component/appliance manufacturers provide a limited two-year warranty on their products. This added warranty is unique to the recreational vehicle industry and should be one of your very serious considerations when choosing your next R.V.

Citation Supreme - Don't Settle For Less!



The popular Model 990 shown above in the Sandpiper Interior. Slide-Out rooms provide interior spaciousness. A lower step-up to the bed makes access easier and bedrooms have superior headroom compared to other brands.



Molded fiberglass front caps are aerodynamically designed to eliminate wind resistance and provide protection against rock damage. Bedrooms have superior headroom not found in other campers.



The unique designed optional bumper with a 2 step foldup and one step add on for easy access to the entrance. A large fold-away assist rail is a standard safety convenience. A ladder provides access to the roof and an optional awning over the entrance door extends 8'. You'll love the long item storage that basements provide with a convenient pull out tray. Holding tanks are enclosed and heated direct from the furnace and both the upper and lower floors are fully insulated with high density block foam insulation. "Happy-Jac" electric jacks are standard on most models.



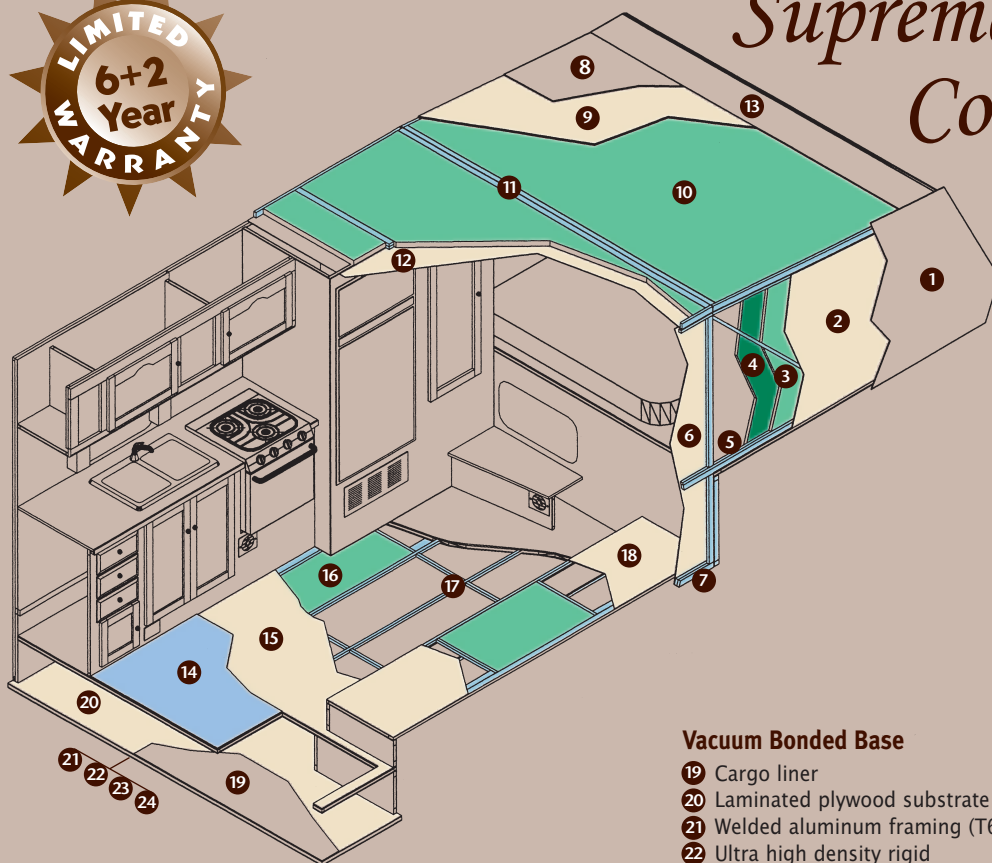
Optional thermopane double glazed windows eliminate condensation and allow all season comfort. Solar reflective glass filters UV rays and reduces heat build-up in summer. By far the best made window in the RV industry.



The very spacious 100" wide body Model 780 Extreme shown above in the standard Medley Interior. The Dinette boasts a large dinette that converts into a 92" bed with an optional fold down bunk above. This compact, light weight camper is built for all season, off road use.



Supreme Construction



2" Vacuum Bonded Wall

- 1 Laminated "Filon" fiberglass gelcoat exterior
- 2 Laminated plywood substrate
- 3 Ultra high density rigid polystyrene insulation
- 4 Ultra high density rigid polystyrene insulation thermal break (n/a 9'2")
- 5 Welded aluminum framing (T6061)
- 6 Laminated interior panel - plywood
- 7 Aluminum studs doubled at camper-truck anchors

Vacuum Bonded Roof

- 8 Dicor vinyl roofing material
- 9 Laminated plywood substrate
- 10 Ultra high density rigid polystyrene insulation
- 11 Welded aluminum framing (T6061)
- 12 Laminated interior ceiling panel - plywood
- 13 One piece fiberglass front cap

Vacuum Bonded Floor

- 14 Linoleum floor covering
- 15 Laminated 3/8" plywood
- 16 Ultra high density rigid polystyrene insulation
- 17 Welded aluminum framing (T6061)
- 18 Laminated plywood substrate

Vacuum Bonded Base

- 19 Cargo liner
- 20 Laminated plywood substrate
- 21 Welded aluminum framing (T6061)
- 22 Ultra high density rigid polystyrene insulation
- 23 Laminated plywood substrate
- 24 Protective polypropylene underbelly

★NORTH AMERICA'S BEST POLAR PAK!

- ✧ 2" vacuum laminated walls with high density block foam insulation
- ✧ Full aluminum welded frame with 3/4" thermal break to interior
- ✧ Fully insulated basement with tanks & valves heated direct from furnace
- ✧ 25,000 BTU furnace ducted to all areas of coach including basement storage
- ✧ Residential dual pane skylights with exclusive condensation control
- ✧ Solar reflective double glazed thermopane windows, condensation control in colder weather
- ✧ Fantastic Fan with intake or exhaust eliminates condensation
- ✧ Insulated compartment doors and seat bases
- ✧ Aerodynamic molded front fiberglass cap eliminates front window.

Our Commitment to Customer Satisfaction

Citation's full two-year limited warranty is reinforced by a limited **six-year structural integrity warranty and a two-year component warranty**. Quality assurance you can depend on! This added warranty is unique to the recreational vehicle industry and should be one of your very serious considerations when choosing your next R.V.

Citation is backed by an international dealer and service network that stretches from coast-to-coast for North American worry free travel. These dealers and dealer service technicians will gladly attest to the excellence of Citation's construction and quality.

Join thousands of General Coach customers in North America and take command of the road with your Citation. **A buying decision you'll never regret.**

We are very proud of our highly skilled people who exercise extreme care in the manufacture of every Citation. We invite you to visit us at General Coach, see the quality process yourself. We know you'll be impressed and we know you'll love the Okanagan Valley.

Proudly Presented By



GENERAL COACH

P.O. Box 700 Oliver, BC V0H 1T0

Telephone: (250) 498-3471

Fax: (250) 498-3240

E-mail: gcsales@generalcoach.bc.ca

Website: www.generalcoach.bc.ca



THOR
NORTH AMERICA'S BEST RV VALUE



Printed in Canada by
Wayside Press Ltd.