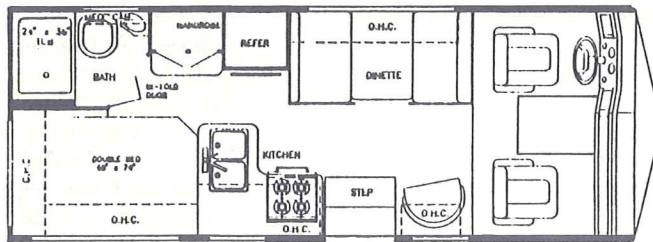


# INNSBRUCK

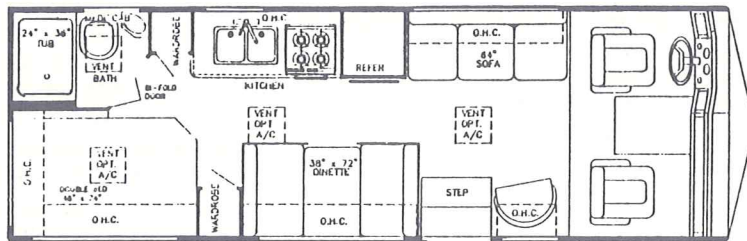
## Floorplans



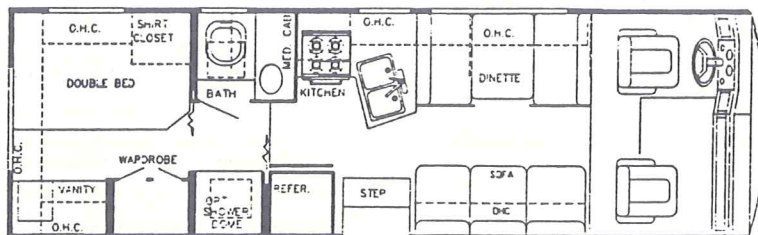
Model 8220



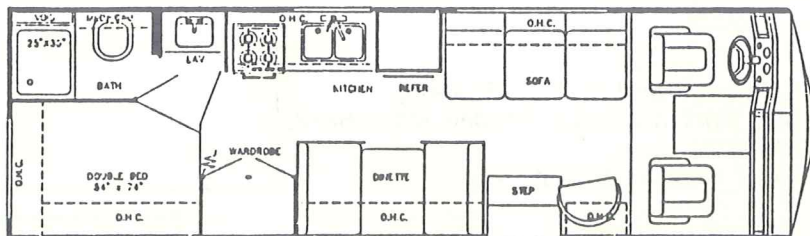
Model 8260



Model 8272



Model 8275





# INNSBRUCK

## Standard Specifications

### Interior and Decor

- Self-Edged & Radius-Cornered Countertops
- Custom, Padded Dash W/Illuminated Gauges
- Deluxe Furniture
- Carpet W/Pad
- Deluxe Color-Coordinated Mini-Blinds
- Fabric-Covered Lambrequin Window Treatment
- Generous Overhead Storage

### Exterior and Construction

- Smooth Laminated Fiberglass Exterior
- 1½" x 1" Tubular Steel-Cage Construction
- Tubular Steel Perimeter-Type Floor
- Laminated Floors W/Metal Underbelly
- Supplemental Steel Chassis Reinforcement
- Outriggers Welded to Main Frame Rails & Bolted to Floor
- High-Density Block Foam Insulation in Floor, Walls & Roof
- Fully-Welded Steel Firewall
- Sealed Perimeter & Engine Compartment
- Tinted Windshield & Windows
- Outstanding Exterior Storage
- Steel-Backed Front Bumper

### Electrical Systems

- Easy-Access Dual Battery System
- 12-Volt, 45-AMP Converter W/Battery Charger
- Electrical Supply Cord
- Electrical Overload Protection
- Generator-Ready Compartment
- Automotive-Type Color-Coded Wiring
- Emergency Start Switch

### Bath and Water

- Dual Holding Tanks Approx. 40 Gal.
- Fresh Water Tank Approx. 40 Gal.
- Demand Water System
- City Water Hook-Up
- Double, Stainless Steel Sink
- Marine Toilet
- Gravity Drains on Fresh Water Lines

### Appliances

- 4-Burner Range W/Oven
- Power-Vent Range Hood
- 6' Single-Door, 2-Way Refrigerator
- Microwave-Ready

### Heating, Ventilation and Air Conditioning

- 25,000 BTU Ducted Furnace (Models 8220, 8272, 8260 & 8275)
- Pre-Wired for Roof Air Conditioning

### Deluxe Standard Features

- Cruise Control
- Monitor Panel
- Power Vent in Commode
- Generator-Ready
- 42 Lb. LP Tank (Model 8220, 8272 & 8275)
- 65 Lb. LP Tank (Model 8260)
- Radial Tires & Spare (Ford Chassis Only)
- Dash Air Conditioner
- 3-Way Captain's Chairs
- Lug Wrench & Jack
- Fire Extinguisher
- Awning Rail
- Rear Mud Flaps
- AM/FM Cassette Stereo W/4 Speakers

### Chassis

- 460 CID — Ford
- 454 CID — GM
- 3-Speed Automatic Transmission
- Electronic Ignition
- Tilt Steering Wheel
- Power Steering & Brakes
- High-Capacity Automotive Heater
- Gasoline Tank: (Approx.)
  - 40 Gal. — Ford
  - 60 Gal. — GM
- Exterior Length: (Approx.)
  - 22' — Model 8220
  - 26' — Model 8260
  - 27' — Model 8272
  - 27' — Model 8275
- Interior Height — 6'8" (Approx.)
- Coach Body Height — 9'5" (Approx.)
- Exterior Width — 8'0" (Approx.)

For further information and available floorplan options, contact your local dealer or Gulf Stream Coach, Inc. Also ask about our full line of Class A, Class C and Micro-Mini motorhomes, travel trailers, fifth wheels and vans.



P.O. Box 1005 • Nappanee, Indiana 46550

Gulf Stream Coach, Inc. reserves the right to make changes in prices, colors, materials, components and specifications and to discontinue models at any time without notice or obligation. Gulf Stream Coach, Inc. assumes no responsibility for any error in type or print reproduction of specifications or floorplans in this brochure.

YOUR DEALER

See Reverse Side for Floorplans