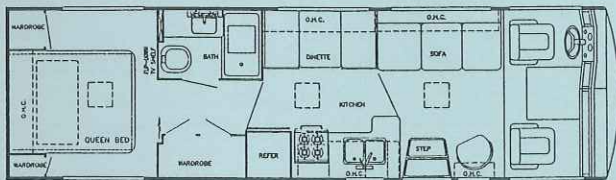




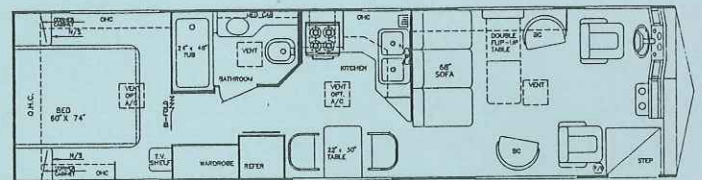
The All-New

SCENIC CRUISER

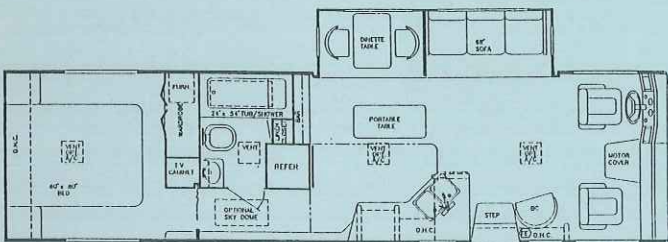
BY GULF STREAM



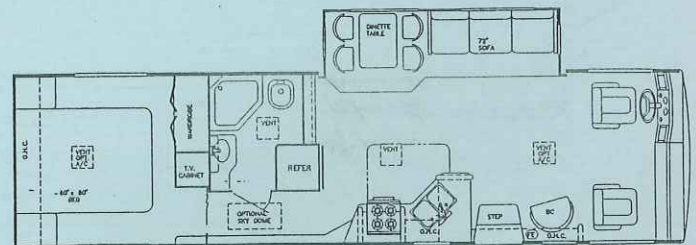
MODEL 8317 GAS



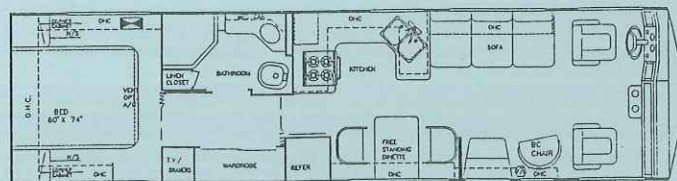
MODEL 8340 DIESEL



MODEL 8341 GAS



MODEL 8341 DIESEL



MODEL 8349 DIESEL OR GAS

SCENIC CRUISER

Standard Specifications

BY GULF STREAM

Interior and Decor

- Mirage Ivory Cabinetry w/ Etched-Glass Doors in Living Room & Bedroom
- Granite Solid Surface Kitchen Countertop w/ Backsplash and Knife Holder
- Custom Padded Dash w/ Illuminated Gauges
- Solid Surface Kitchen Countertop
- Day/Night Pleated Shades in LVRM & BDRM
- Pleated Privacy Curtain
- 3-Way, Feather-Touch Captains Chairs
- Scenic Cruiser Deluxe Accessory Package
- Deluxe Furniture Package
- Dash Mounted Cassette Holder
- Deluxe Door & Window Drapes
- Coordinated Bedspread & Shams
- Generous Overhead Storage
- Free Standing Dinette w/ Extra Leaf & 2 Chairs
- Queen Size Bed w/ Innerspring Mattress
- Mini-Blinds in Kitchen
- Skydome in Bath
- Mirrored Closet Doors

Exterior and Construction

- Heated and Fully Enclosed Holding Tanks
- Rear Fiberglass Cap & Integrated Bumper
- Tubular Welded Aluminum Construction (Sidewalls and Roof)
- Outstanding Side-to-Side, Carpeted and Lighted Exterior Storage
- Tubular Steel Floor Construction
- Laminated Floors w/ Metal Underbelly
- 1-1/2" Block Foam Insulation in Floor, Walls and Roof
- Radius Entry Door w/ Deadbolt Lock
- Power Fasten Door Locking System
- Sealed Perimeter & Engine Compartment
- Laminated Fiberglass Exterior w/ Integrated Fiberglass Skirts & Compartment Doors
- Panoramic Windshield
- Tinted Windshield & Windows
- Deluxe Outside Mirrors
- Radius Rubber Roof w/ "Soft Touch" Carpeted Ceiling
- Electronically Controlled, Pass-Through Storage Doors

Electrical Systems

- Easy Access Dual Battery System
- Electric Supply Cord
- Electric Overload Protection
- Automotive-Type, Color-Coded Wiring
- Power Vent in Bath & Kitchen
- Lighted Basement Storage

Bath and Water

- Dual Holding Tanks - Approx. 90 Gal.
- Fresh Water Tank - Approx. 60 Gal.
- Super-Flow Manifold Water Distribution System
- Demand Water System
- City Water Hook-Up
- Double Stainless Steel Sink
- White Single Lever Kitchen Faucet
- Gold Neo-Angle Shower Surround
- Brass-Look Bath Fixtures
- Deluxe Dual Pedestal Marine Toilet w/ Sprayer
- Gravity Drains on Fresh Water Lines
- Sky Dome in Shower Area

Appliances

- Deluxe 4-Burner Range w/ Oven
- Lighted, Power Range Hood
- 2-Door, 2-Way Refrigerator
- TV Antenna w/ Amp, Booster and 2 Jacks
- 20" Color TV (VCR Ready)
- LP Gas Leak Detector

Heating, Ventilation & Air Conditioning

- 40,000 BTU Ducted Furnace w/ Electronic Ignition
- Prepped for Ceiling Ducted Air Conditioning

Deluxe Standard Features

- Auto Dash Air Conditioner
- Wheel Covers
- Auto Cruise Control
- AM/FM Cassette w/ 4 Speakers
- Monitor Panel
- 115 lb. LP Tank
- Radial Tires
- Driving Lights
- Towing Hitch

Chassis

- Spartan EC 2000, Raised Rail Chassis w/ Cummins 6BT 5.9, 190 HP @ 2500 RPM, 475 ft. lb. Torque @ 1700 RPM, Turbo-Charged Rear Mounted Diesel Engine Standard, (230HP, 605 FT. LB. Torque Optional)
- Allison AT 542 4-Speed Transmission Standard; Allison "World" MD 3060 P 6-Speed Electronically Shifted Transmission with the OPT. 230 HP Engine
- Model 8341 Only: Super Duty FORD Chassis (Diesel available) w/ 460 CID V-8 & 4-Speed Automatic Transmission
- 3.73:1 Rear Axle Ratio (Spartan)
- 5.13:1 Rear Axle Ratio (Super Duty FORD)
- Power Steering w/ Front and Rear Disc Brakes
- Fuel Tank: Approx. 60 Gal. - Spartan
Approx. 75 Gal. - Super Duty FORD
- Wheel Base: Spartan - Model 8340 - 208"
Spartan - Model 8349 - 208"
FORD - Model 8341 - 178" + Tag
- Exterior Length: Approx. 34'
- High Capacity Automotive Heater
- Tilt Steering Wheel
- Interior Height: Approx. 6' - 8"
- Exterior Height: Approx. 10' - 9"



Gulf Stream Coach, Inc. P.O. Box 1005 • Nappanee, IN 46550

For further information and available floorplan options, contact your nearest dealer or Gulf Stream Coach, Inc. Gulf Stream Coach, Inc. reserves the right to make changes in prices, colors, materials, components and specifications and to discontinue models at any time without notice or obligation. Gulf Stream Coach, Inc. assumes no responsibility for any error in type or print reproduction of specifications or floorplans in this brochure. 15M IC 12/92