

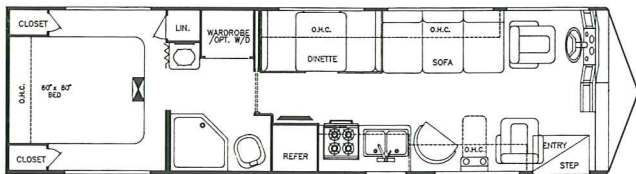
4/92



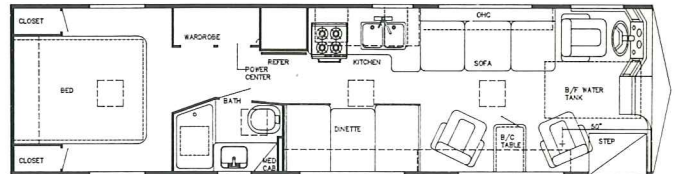
Sun Clipper DIESEL

by Gulf Stream

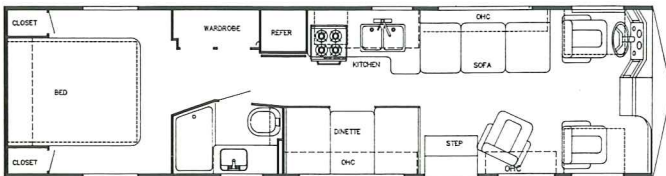
FLOORPLANS



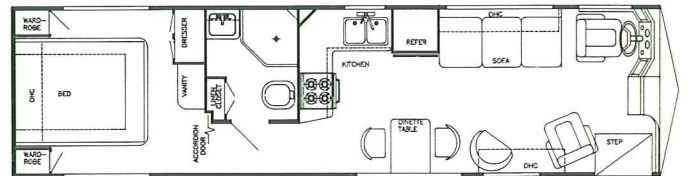
Model 8293 (Spartan)



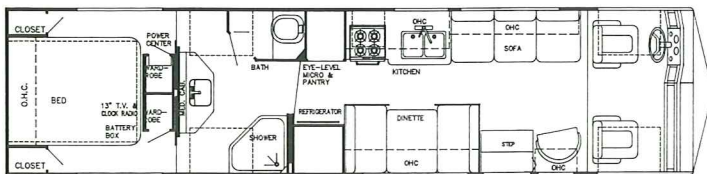
Model 8313 (Spartan)



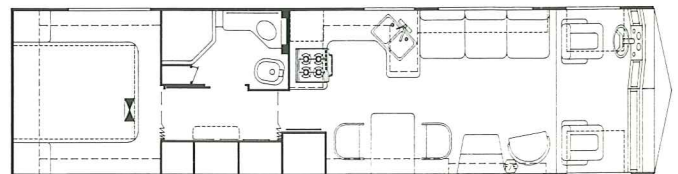
Model 8313 (Oshkosh)



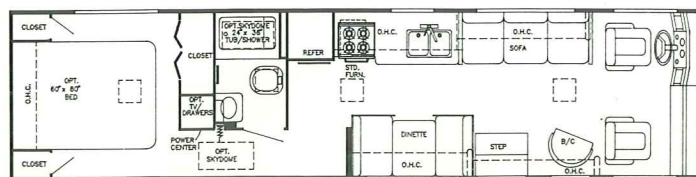
Model 8324 (Spartan)



Model 8345 (Oshkosh - Available in 102" Wide)



Model 8349 (Oshkosh - 102" Wide Body)



Model 8351 (Oshkosh)

Sun Clipper

DIESEL
by Gulf Stream

Standard Specifications

Interior and Decor

- ☐ Self-Edged & Radius-Cornered Countertops
- ☐ Custom Padded Dash w/Illuminated Gauges
- ☐ Windshield Privacy Drape
- ☐ Deluxe Carpet w/Pad
- ☐ Deluxe Furniture
- ☐ 3-Way Driver Seat
- ☐ Deluxe Door & Window Drapes
- ☐ Coordinated Bedspreads & Shams
- ☐ Oak-Framed Decorator Mirror
- ☐ Generous Overhead Storage

Exterior and Construction

- ☐ Heated & Fully Enclosed Holding Tanks
- ☐ Super Structure Steel Truss Floor System
- ☐ Tubular Steel Cage Construction (16 Gauge, 1-1/2" X 1-1/2")
- ☐ Laminated Floors w/Metal Underbelly
- ☐ R-7.5, 1-1/2" Block Foam Insulation in Floor, Walls and Roof
- ☐ Fully-Welded Steel Firewall
- ☐ Sealed Perimeter & Engine Compartment
- ☐ Laminated Fiberglass Exterior
- ☐ Panoramic Windshield
- ☐ Tinted Windshield & Windows
- ☐ Outstanding Exterior Storage
- ☐ Deluxe Outside Mirrors
- ☐ Radius Rubber Roof w/"Soft Touch" Carpeted Ceiling

Electrical Systems

- ☐ Easy-Access Dual Battery System
- ☐ 12-Volt, 45-Amp Converter w/Battery Charger
- ☐ Electric Supply Cord
- ☐ Electric Overload Protection
- ☐ Generator Compartment
- ☐ Automotive-Type, Color-Coded Wiring
- ☐ Quad Headlight System

Bath and Water

- ☐ Dual Holding Tanks - Approx. 100 Gal.
- ☐ Fresh Water Tank - Approx. 42 Gal.
- ☐ Demand Water System
- ☐ City Water Hook-Up
- ☐ Double Stainless Steel Sink
- ☐ Tub/Shower Combination
- ☐ Marine Toilet
- ☐ Gravity Drains on Fresh Water Lines

Heating, Ventilation & Air Cond.

- ☐ 30,000 BTU Ducted Furnace w/Electronic Ignition
- ☐ Pre-Wired for Roof Air Conditioning

Appliances

- ☐ 4-Burner Range
- ☐ Lighted, Power Range Hood
- ☐ 2-Door, 2-Way Refrigerator
- ☐ Microwave Ready

Deluxe Standard Features

- ☐ Auto Dash Air Conditioner
- ☐ Auto Cruise Control
- ☐ Wheel Covers
- ☐ AM/FM Cassette w/4 Speakers
- ☐ Monitor Panel
- ☐ Power Vent in Commode
- ☐ Generator Ready
- ☐ 85 lb. LP Tank

Chassis

- ☐ Spartan EC 2000, 16,000 lb. GVWR Chassis w/Cummins 6BT 5.9, 160 HP @ 2500 RPM, 400 ft. lb. Torque @ 1700 RPM, Turbo Charged Rear Mounted Diesel Engine (Models 8293, 8313 & 8324) - Cummins 6BT 5.9, 190HP @ 2500 RPM, 475 ft. lb. Torque @ 1700 RPM Optional
- ☐ Oshkosh X-Line, 18,000 lb. GVWR Chassis w/Cummins 6BT 5.9, 190 HP @ 2500 RPM, Turbo Charged Rear Mounted Diesel Engine (Models 8313, 8345 & 8351)
- ☐ Allison AT-542 4-Speed Automatic Transmission
- ☐ Dana Front and Rear Axles w/Tapered Leaf Springs and Shock Absorbers
- ☐ 105 Amp DELCO® Alternator
- ☐ 1125 CCA Battery
- ☐ Air Over Hydraulic 15" Dia. Front and Rear Disc Brakes w/Air Actuated, Spring Applied Parking Brake -- Spartan
- ☐ Hydraulic 14.75" Dia. Front and Rear Disc Brakes w/Electric Back-Up Pump and Hydraulic-Release Parking Brakes -- Oshkosh
- ☐ Power Steering and Brakes
- ☐ Fuel Tank: Approx. 60 Gal. - Spartan ; Approx. 90 Gal. - Oshkosh
- ☐ 3.73:1 Rear Axle Ratio - Spartan ; 3.31:1 Rear Axle Ratio - Oshkosh
- ☐ Wheel Base - Spartan - 160" (8293) - 190" (8313 & 8324) Oshkosh - 208" (8313) - 228" (8345, 8349 & 8351)
- ☐ Exterior Length - Approx. 29' (8293) - Approx. 31' (8313) - Approx. 32' (8324) - Approx. 34' (8345 & 8349) - Approx. 35' (8351)
- ☐ High Capacity Automotive Heater
- ☐ Tilt Steering Wheel
- ☐ Interior Height - 6'-8"
- ☐ Exterior Height - 10'-3"
- ☐ Handling Package: 4 Bilstein Gas Shocks & Heavy Duty Sway Bar - Oshkosh
- ☐ Safe-T-Plus Steering Stabilizer (Wide-Body Oshkosh)

Gulf Stream Coach, Inc. P.O. Box 1005 • Nappanee, IN 46550

Your Dealer

For further information and available floorplan options, contact your local dealer or Gulf Stream Coach, Inc. Also ask about our Class A and Class C motorhomes, travel trailers, fifth wheels, travel parks and vans. Gulf Stream Coach, Inc. reserves the right to make changes in prices, colors, materials, components and specifications and to discontinue models at any time without notice or obligation. Gulf Stream Coach, Inc. assumes no responsibility for any error in type or print reproduction of specifications or floorplans in this brochure.