

GULF STREAM COACH

GLASS C MINI MOTORHOMES

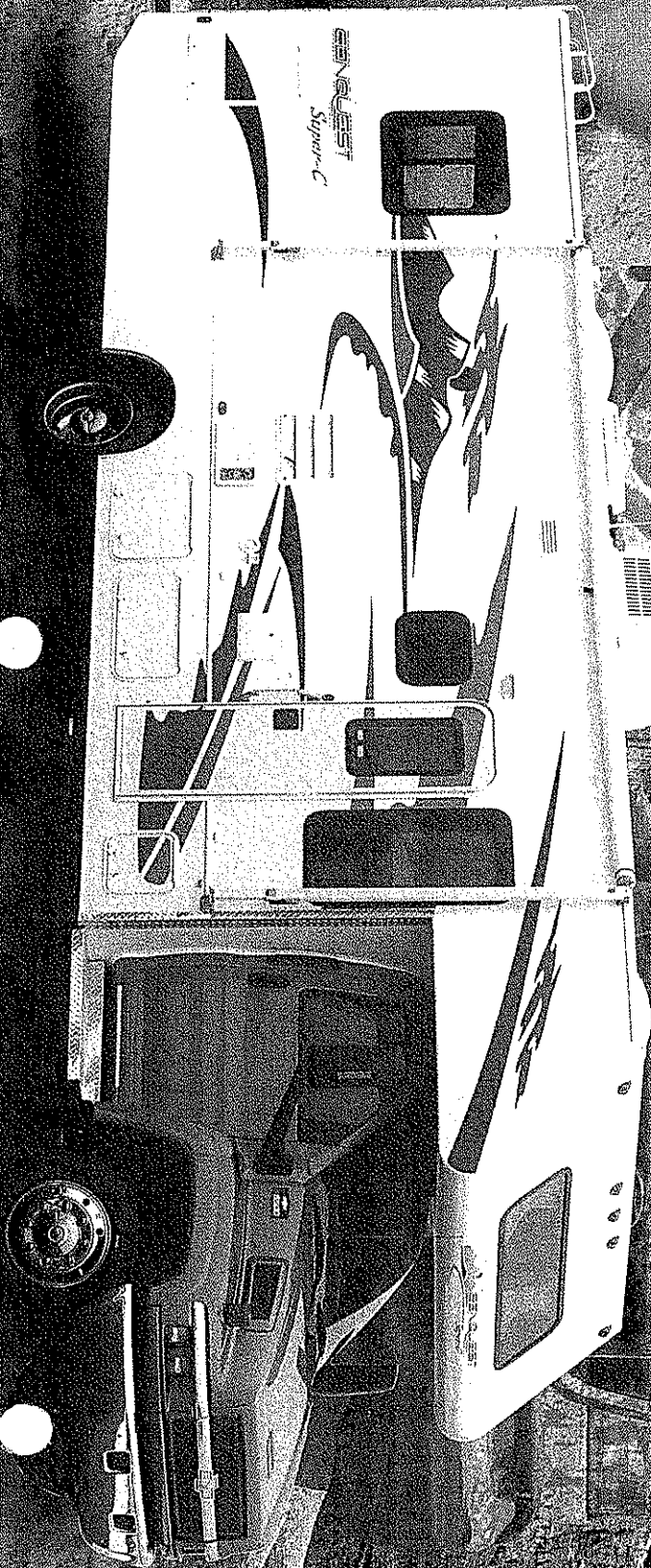
2005

CONQUEST

Take Control in a Conquest Minihome

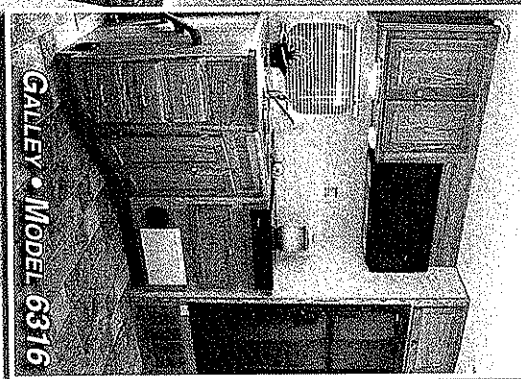


CONQUEST
MINI MOTORHOMES



CONQUEST

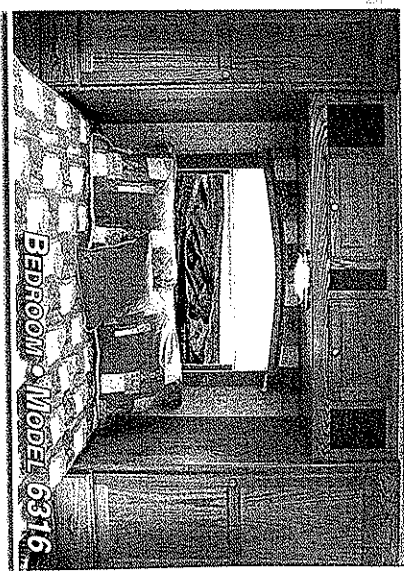
Super-C



GALLEY • MODEL 6316

GALLEY CONVENIENCE...

Our wide-open galley offers all the comforts of your kitchen at home. 3-burner high performance range; 2-door, 2-way refrigerator and large convection microwave. You will be able to prepare any of your family's favorite meals.

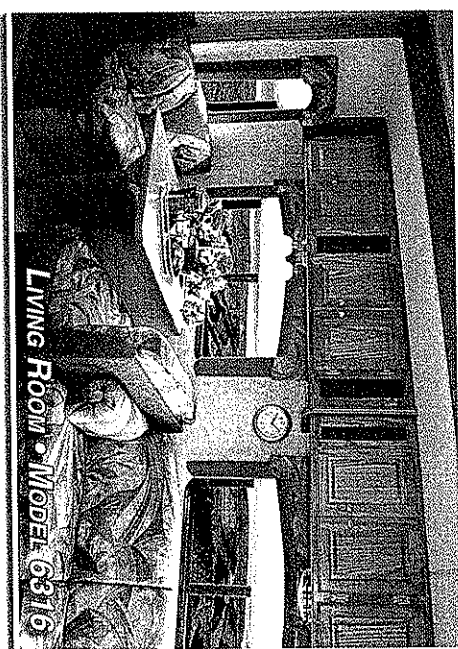


BEDROOM • MODEL 6316

SPACIOUS LIVING...

Open living areas that incorporate large slide rooms and residential style furniture make home away from home very comfortable.

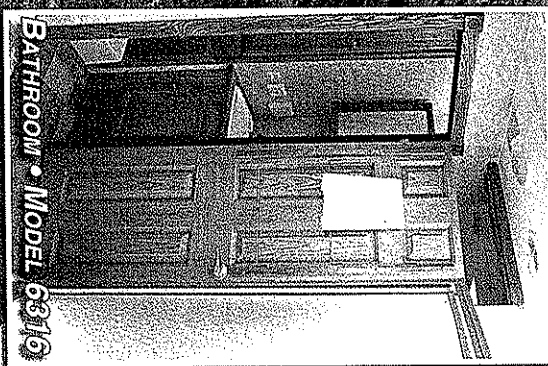
The overhead entertainment center featuring a large TV and plenty of storage for music and movies to entertain everyone on a rainy day or quiet evening.



LIVING ROOM • MODEL 6316

BATHROOM...

Efficient bathroom design makes it easy to prepare for the day ahead without sacrificing valuable living and storage space.



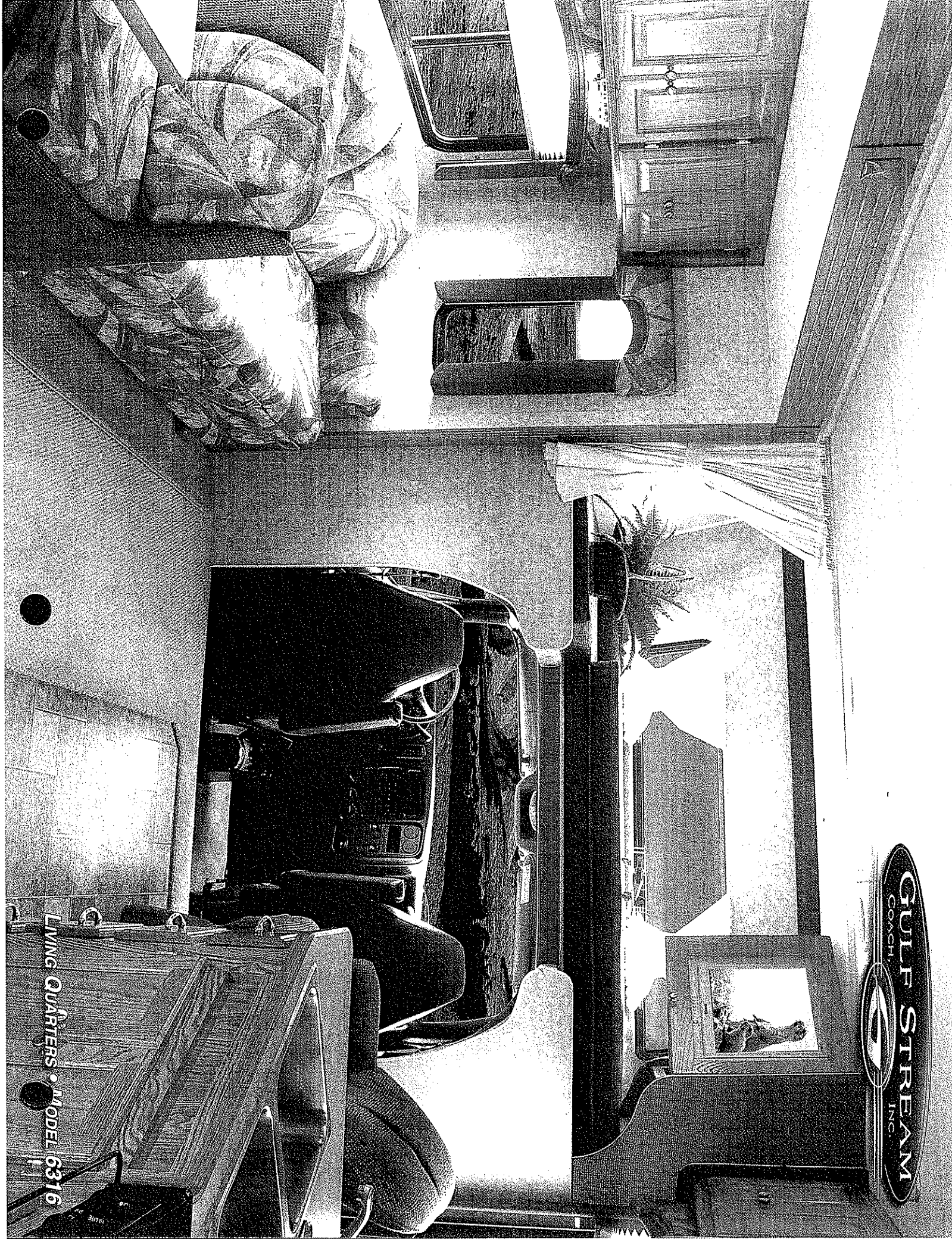
BATHROOM • MODEL 6316



COMFORTABLE COCKPIT • MODEL 6316

COMFORTABLE COCKPIT...

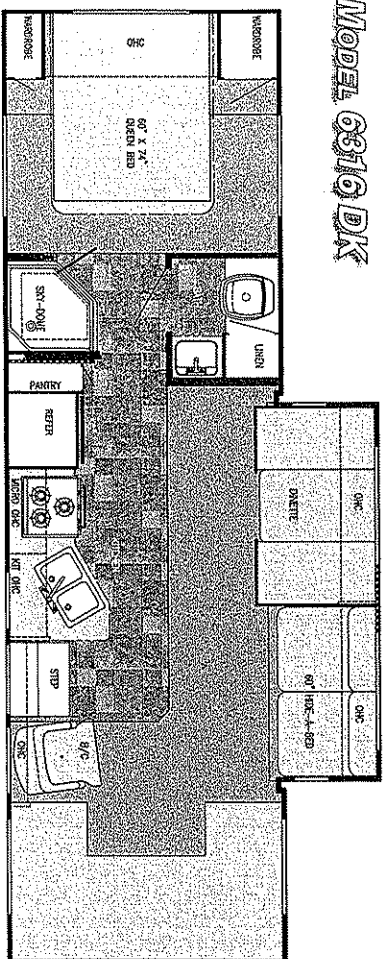
Driving your Super-C is safe, comfortable and effortless. Plush seating with factory installed safetybelts and airbags for peace of mind as you roll down the open road. Large mirrors and sloped hood maximize visibility. The optional visor mounted backup monitor will give even the most timid driver confidence while backing up. Add in the optional wood dash for that classic finished look.



GULF STREAM
INC.
COACH

LIVING QUARTERS • MODEL 6316

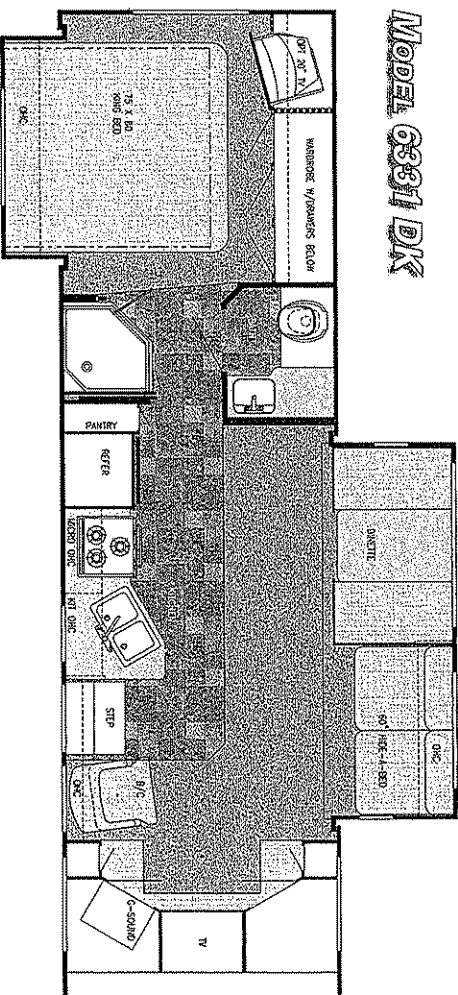
MODEL 6816 DK



Chassis	Chevy Kodiak
Engine	325 Hp. V-8
Fuel	80
GVWR	19,500
Length	32'-7"
Height w/AC	11'-10.5"
Width	101"
Wheelbase	213.5"
Fresh	54 gal.
Grey	52 gal.

Black	52 gal.
LP Gas Tank	64 lbs.
Furnace (BTU's)	30,000
Water Heater w/DSI	6 gal.
Ex Storage	153.48

MODEL 6831 DK



Chassis	Chevy Kodiak
Engine	325 Hp. V-8
Fuel	80
GVWR	19,500
Length	33'-9"
Height w/AC	11'-10.5"
Width	101"
Wheelbase	225.5"
Fresh	94 gal.
Grey	52 gal.

Black	52 gal.
LP Gas Tank	64 lbs.
Furnace (BTU's)	30,000
Water Heater w/DSI	6 gal.
Ex Storage	60.4

Interior & Decor

- Nearly 7' Interior Ceiling Height
- Handcrafted Natural Hardwood Cabinet Fronts & Doors
- 2-way Driver & Passenger Seat
- Coordinated Bedspreads & Pillows
- Power Vent in Commode
- Mini Blinds in Kitchen
- Designer Interior Window Treatments
- Drink Tray
- Entry Door Assist Handle
- Privacy Curtain Cab
- Deluxe Carpet w/Pad
- Generous Overhead Storage
- Pleated Shades
- Rubber Entry Step
- Tub Surround

Appliances

- Auxiliary Battery
- Electronic Converter w/ Charger (60 Amp)
- Monitor Panel
- TV Antenna w/ Amp & Boost
- Battery Disconnect
- 3-Burner Range
- Convection Microwave Oven
- Carbon Monoxide Detector
- 13,500 BTU Ducted Roof A/C
- 2-way Double Door Refrigerator
- 6 Gal. Elect. Ign. Water Heater
- Bath & Water
- City Water Hook-Up
- Water Bypass Valve
- Glass Shower Door
- On Demand Water System
- Lavatory w/ Base Cabinet Storage
- Bath Convenience Accessories
- Skydome in Shower
- Medicine Cabinet

Chassis

- Chevy 8.1 L. V8 Vortec™ Engine
- Chevy Kodiak Chassis
- 19,500 GVWR, 26,000 GCWR
- Allison™ 1000 Series Automatic
- Tire Wheel Steering
- Power Locks and Windows
- Heated & Remote Mirrors
- CD Player-AM/FM Stereo w/ 4 Speakers
- Dual Air Bags
- Cruise Control
- Power Brakes & Steering
- Radial Tires
- Exterior & Construction
- Welded Aluminum Cage Construction.
- High Density Block Foam Insulation in the Walls, Roof & Floor
- Super-Stick Laminated Fiberglass Ext.
- Electric Step
- Exclusive Molded Roof Brick Insulation
- Radcused Laminated Rubber Roof
- Heilbrac-Welded Aluminum Rallies and Exclusive Molded Roof Brick

Popular Options

- ☐ Outside Entertainment Center
- ☐ 3 Speed Fantastic Fan in Bedroom
- ☐ 4.0 Generator
- ☐ Backup Monitor
- ☐ Heated Holding Tanks
- ☐ Emergency Start
- ☐ 15,000 BTU Ducted A/C
- ☐ Leveling Jacks
- ☐ Exterior Painted Skirt
- ☐ Range Cover
- ☐ Full CabOver Entertainment Center with 27" Flatscreen T.V.
- ☐ Front Window
- ☐ Rear Window
- ☐ Ladder
- ☐ Awning

Electrical System

- Easy Store 30' Elect. Power Cord
- Lighted Basement Storage
- 110 Volt Receptacles
- Generator Prep
- Outside Receptacle

24 HR. EMERGENCY ROADSIDE ASSISTANCE

- One Year Coach-Net Membership
- Towing and Winching
- Flat Tire Change
- Mobile Mechanic
- Delivery of emergency Fluids
- Jump-Start / Battery Boost
- Lockout

Gulf Stream Enclosure Features & Benefits

SOLID HARDWOOD CABINETS



PREDRIILLED HARDWOOD CONSTRUCTION

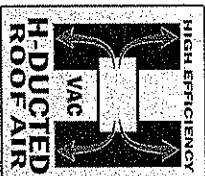
Our residential style cabinets are constructed of solid hardwood doors and fronts that are predriilled and screwed then they are stained and top coated with a furniture grade finish that provides long lasting beauty and durability as well as adding strength and quietness to your motorhome.

COMPETITOR'S CABINETRY

Other companies use wrapped cabinet fronts prone to peeling, fading and tearing. The softer composite wood used does not hold screws as well as hardwood resulting in loss of strength and squeaking. Discoloration will degrade the beauty and lower the value of the motorhome.

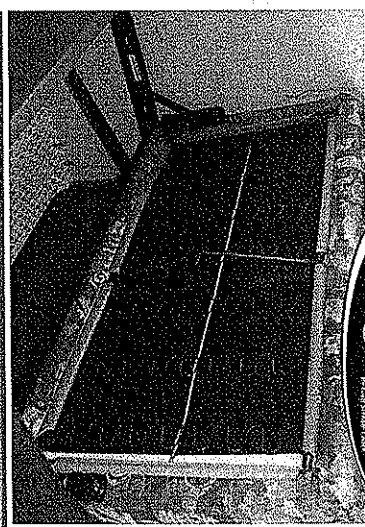
GALVANIZED STEEL STORAGE COMPARTMENTS

Seamless, carpeted, galvanized steel storage compartments safely cradle your valuables. Rust protective paint and foam sealed for extended life and a quiet ride.



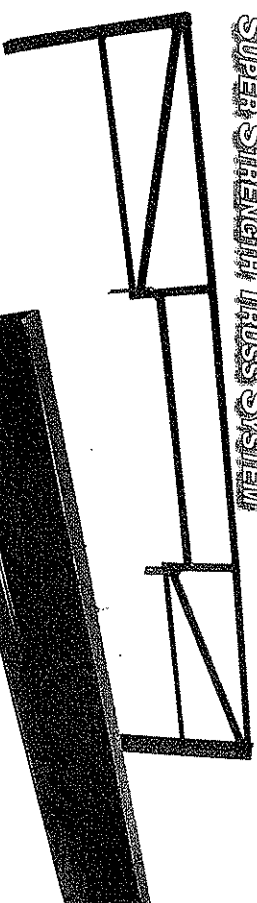
Dual metal H-Ducted air conditioning system with foil bubble wrapped insulation for improved climate control.

Comfort Plus+ Furniture



Unlike traditional plywood and foam seating Comfort Plus Seating features the strength of steel and the comfort of a sprung dinette cushion.

SUPER STRENGTH TRUSS SYSTEM

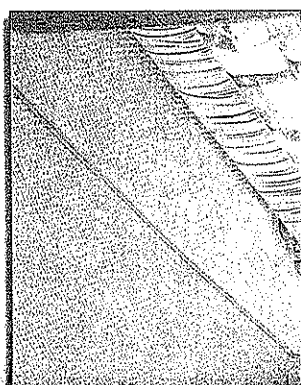


6" & 8" C CHANNEL EXTENSION

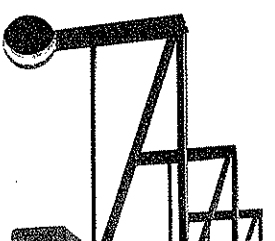
The super strength truss system is unmatched in the class C industry. The structural subfloor foundation begins by welding a network of integrated steel trusses to the chassis rail. Specifically designed to distribute and transfer the tremendous forces from the coach to the chassis rail these trusses are individually tested to withstand 6,000 pounds each.

When the chassis is stretched, Gulf Stream stands alone in the industry by using a full (6" on LE) or (8" on Super C) C channel extension versus the traditional 4" or less. This practice adds to the strength of the foundation and offers peace of mind that towing is safe on an extension that is true to the chassis.

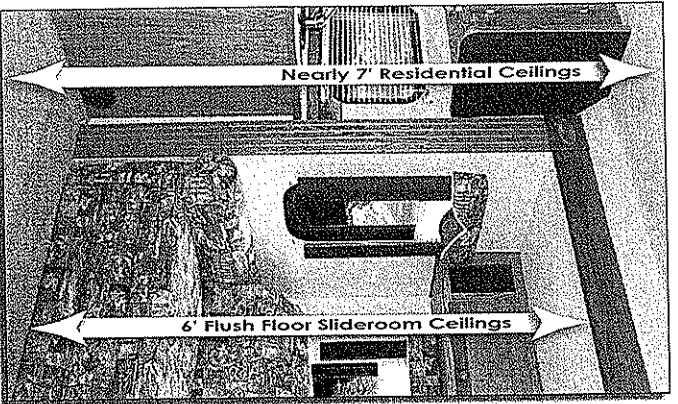
FLUSH FLOOR Slide out



Gulf Stream Class C's offer flush floor slides for a residential look and feel with 6 foot ceilings in the slideroom.

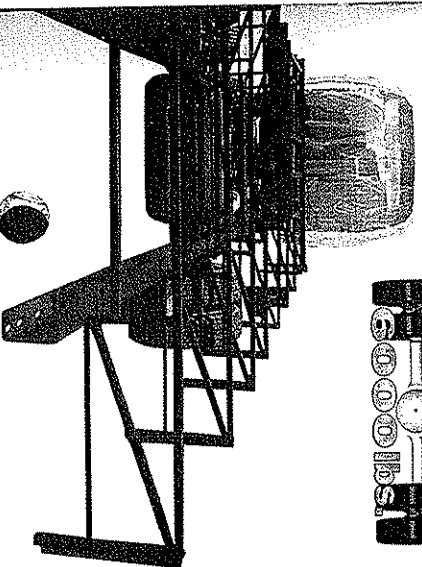


DR
ROOMS



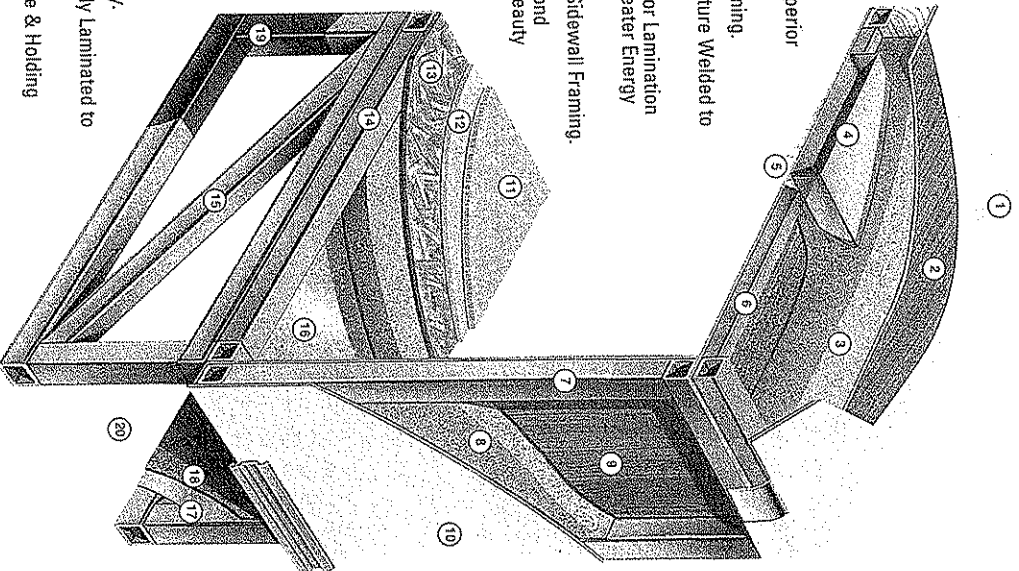
The Gulf Stream Class C's have nearly 7' interior ceilings for a residential look and feel with 6 foot ceilings in the slideroom.

TUFF-TRUSS
6000 lbs.

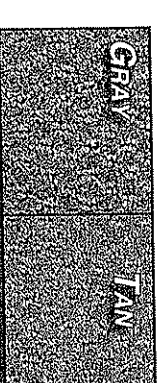
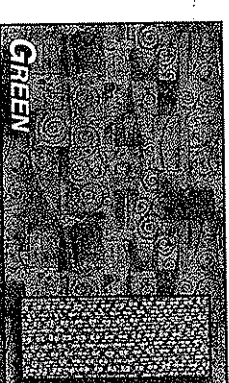


Buckle of Strength

1. Seamless Rubber Roof For Greater Energy Efficiency and Dependability.
2. Luan Decking for Additional Strength.
3. Molded, High Density EPS (Expanded Polystyrene) Roof Brick Insulation - Provided Consistent Insulation Value as well as Superior Dimensional Rigidity.
4. One-Piece Formed Aluminum Air Conditioning Duct, Completely Surrounded By EPS Insulation.
5. Bubble-Wrapped Foil Insulation Provides Superior Insulation and Helps Prevent Condensation.
6. Rugged Welded Tubular Aluminum Roof Framing.
7. Rugged Heavy-Gauge Tubular Aluminum, Fixture Welded to Form the Sidewall Framing.
8. High-Density EPS Insulation Provides Superior Lamination and Bonding Characteristics and Insures Greater Energy Efficiency.
9. Interior Wall Panels Securely Laminated to Sidewall Framing.
10. "Super Slick" Fiberglass Exterior Vacuum-bond Laminated to Sidewall Framing for Lasting Beauty and Durability. (Option)
11. High-Quality Stain-Resistant Carpeting Available in Designer Coordinated Colors.
12. Extra-Thick Padding Under Carpet Provides Extra Comfort and Increases Carpet Durability.
13. Floor Decking Laminated to Steel Floor Structure Assures a Quiet, Long-Lasting Rigid Floor and comes with a 10-Year Warranty.
14. Heavy-Gauge Tubular Steel Framing, Fixture Welded for Extra Strength and Stability.
15. Heavy-gauge Tubular Steel Framed, Fixture Welded Floor Truss System Provides the Strongest Class C Foundation in the Industry.
16. Seamless Layer of Galvanized Steel Securely Laminated to the Steel Floor Framing.
17. Galvanized Steel Used to Form Each Storage & Holding Compartment.
18. Durable All-Weather Carpeting Completes Each Accessible Storage Compartment, Providing Extra Protection for Luggage and Valuables.
19. Rust-Prohibitive Paint Coating Applied to All Steel Framing Assures Corrosion and Rust Protection.
20. The Industry's Strongest, Most Spacious Exterior Storage Compartments.



TAKE THE TIME TO COMPARE...
and you will see the exceptional value of a Gulf Stream Coach



Gray Carpet Available with Blue or Platinum. Tan Carpet Available with Tan or Green.

NICKEL PLATE HARDWARE



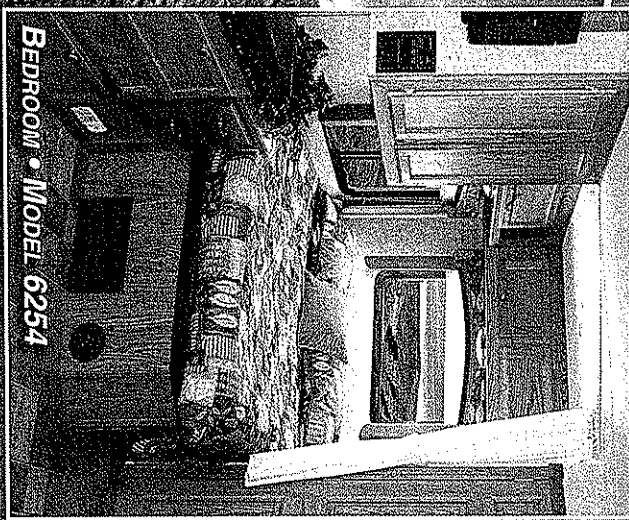
CORVALLIS Limited Edition

CORNER BEDROOM...

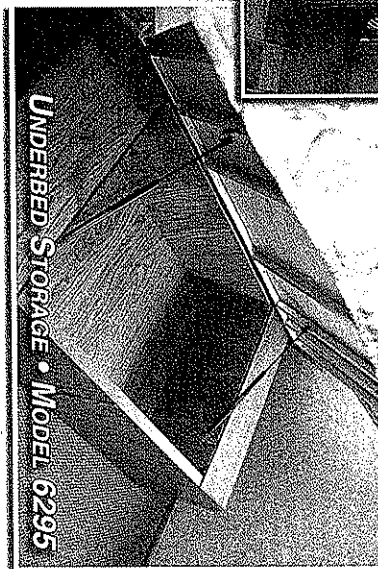
Unique space saving corner bedroom provides more open floor space in the living area by eliminating the wasted space on both sides of the bed.

STORAGE...

Many Limited Edition floorplans have cavernous storage areas under the bed equipped with gas charged lifters for easy opening and aluminum frame lid for strength.



BEDROOM • MODEL 6254



UNDERBED STORAGE • MODEL 6295

GARAGE...

Enormous, four point access (3 exterior, 1 interior), one-piece molded fiberglass storage garage designed to maximize storage capacity and accessibility.



GALLEY • MODEL 6236

KITCHEN...

Our rear corner galley offers all the comforts of your kitchen at home. 3-burner high performance range; 2-door, 2-way refrigerator and large convection microwave. You will be able to prepare any of your family's favorite meals.



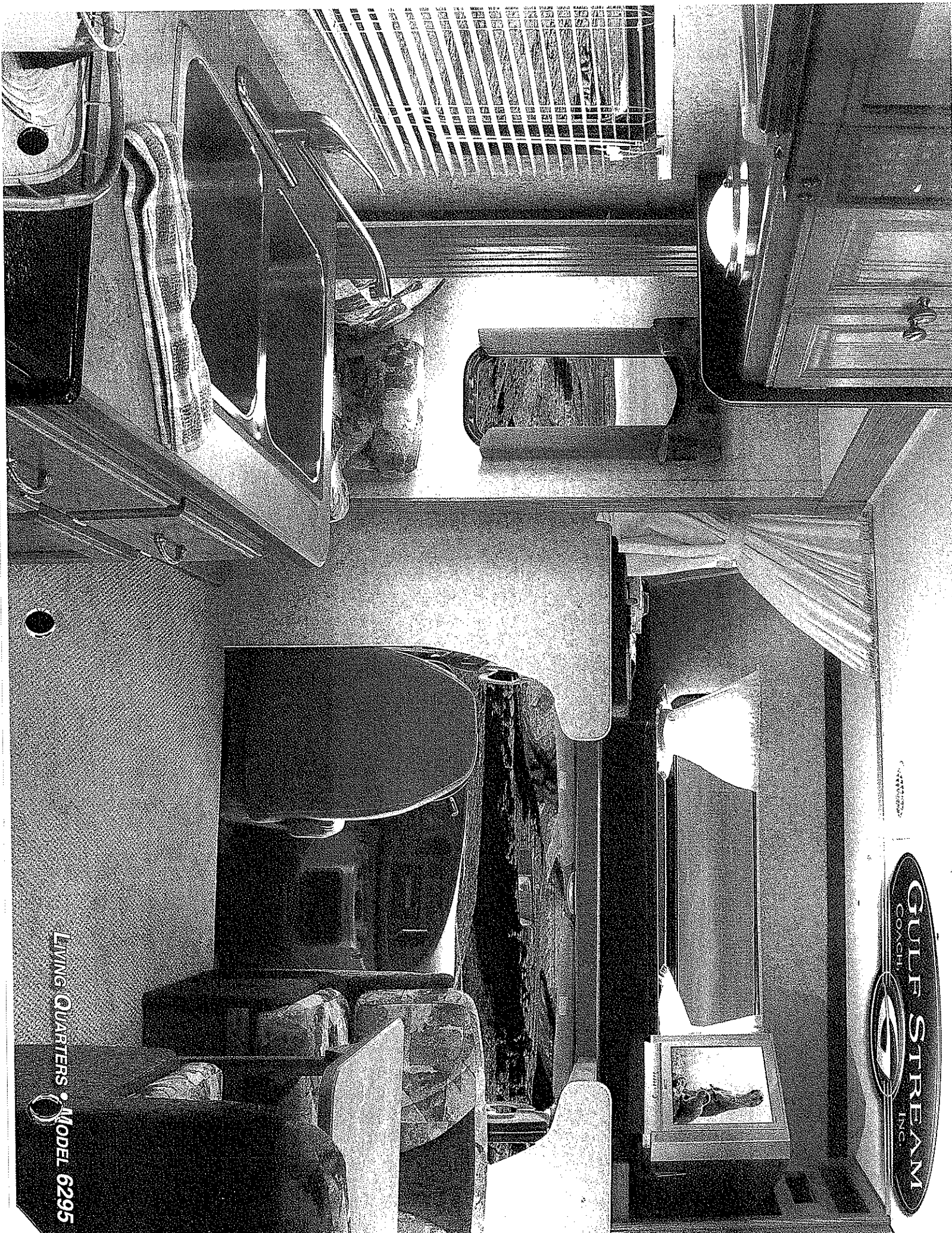
STORAGE GARAGE
MODEL 6316-SUPER ONLY, 6275/L/E



OPTIONAL OVERHEAD ENTERTAINMENT CENTER

ENTERTAINMENT...

The optional overhead entertainment center featuring a large flat screen TV and plenty of storage for music and movies to entertain everyone on a rainy day or quiet evening.

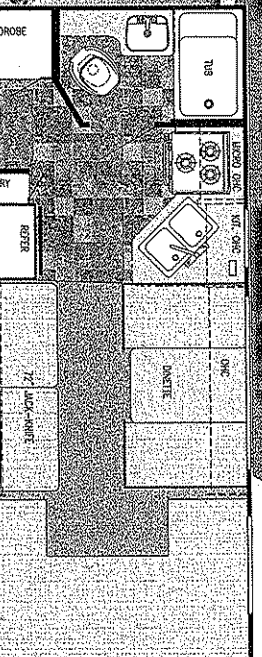


LIVING QUARTERS • MODEL 6295

CONQUEST

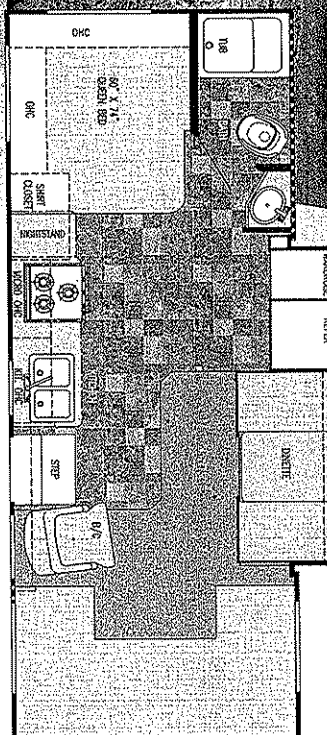
Heritage Edition

MODEL 6211



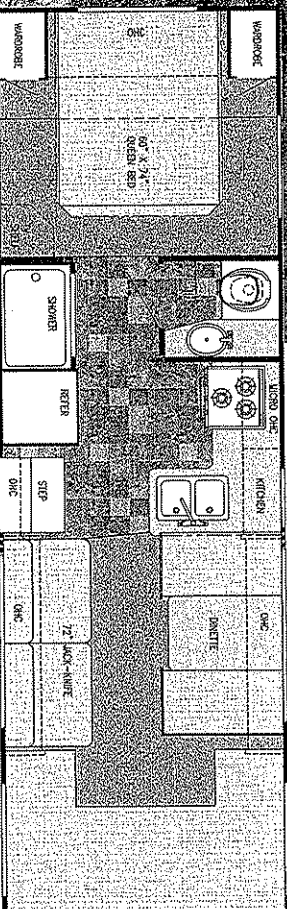
Chassis	Ford E350
Engine	Ford V-10
Fuel	37
GVWR	10,700
Length	22'-4"
Height w/AC	11'-6"
Width	101"
Wheelbase	138"
Fresh	22 gal.
Grey	30 gal.
Black	30 gal.
LP Gas Tank	42 lbs.
Furnace (BTU's)	25,000
Water Heater w/DSI	6 gal.
Ext Storage	3.8 cu. ft.

MODEL 6254



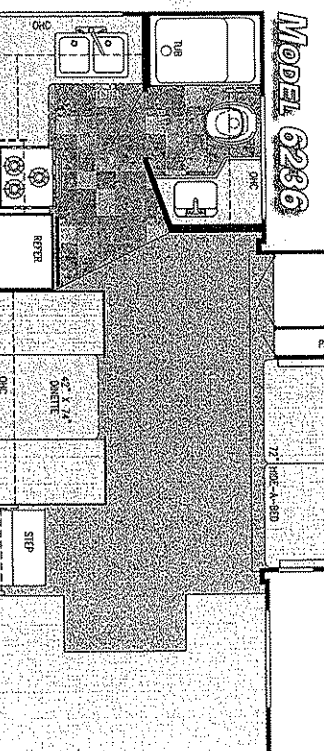
Chassis	Ford E450
Engine	Ford V-10
Fuel	55
GVWR	14,050
Length	25'-11"
Height w/AC	11'-6"
Width	101"
Wheelbase	175"
Fresh	32 gal.
Grey	30 gal.
Ext Storage	42.0 cu. ft.

MODEL 6280



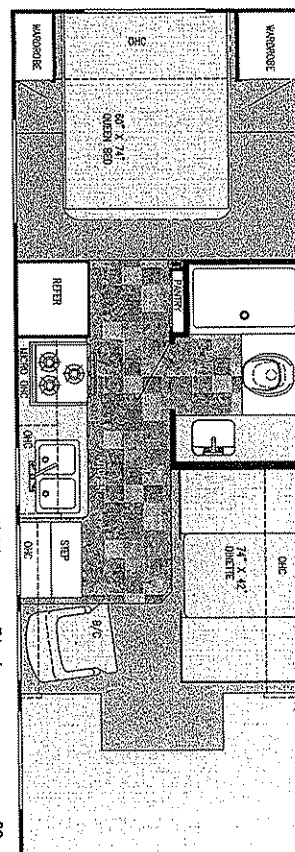
Chassis	Ford E450
Engine	Ford V-10
Fuel	55
GVWR	14,050
Length	25'-7"
Height w/AC	11'-6"
Width	101"
Wheelbase	196"
Fresh	34 gal.
Grey	36 gal.
Ext Storage	59.45 cu. ft.

MODEL 6286

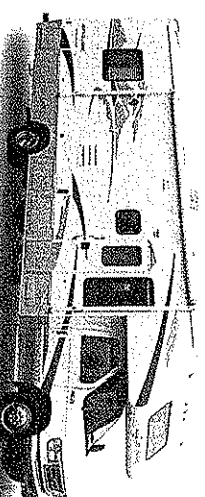
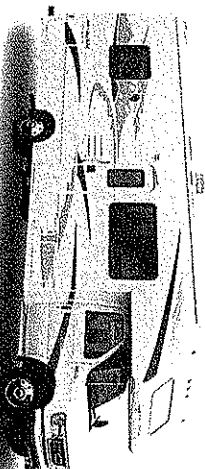


Chassis	Ford E450
Engine	Ford V-10
Fuel	55
GVWR	14,050
Length	24'-10"
Height w/AC	11'-6"
Width	101"
Wheelbase	176"
Fresh	22 gal.
Grey	30 gal.
Ext Storage	20.8 cu. ft.

MODEL 6275



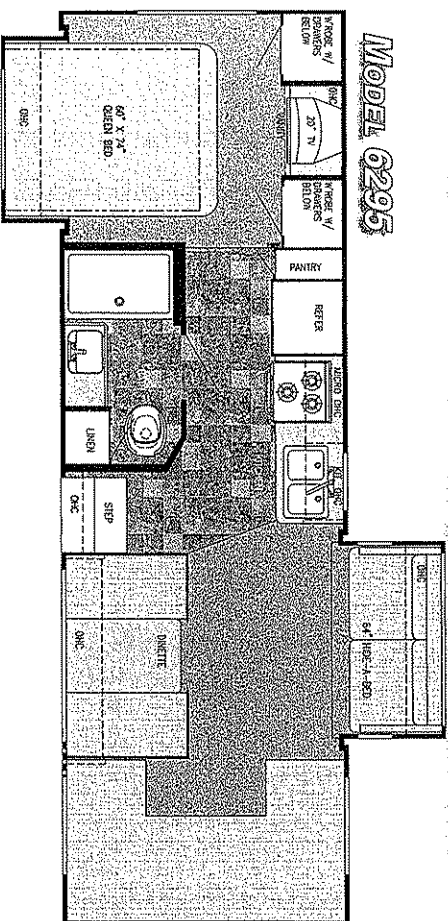
Chassis	Ford E450
Engine	Ford V-10
Fuel	55
GVWR	14,050
Length	27'-9"
Height w/AC	11'-6"
Width	101"
Wheelbase	196"
Fresh	34 gal.
Grey	36 gal.
Ext Storage	129.46 cu. ft.



STANDARD EXTERIOR GRAPHICS

OPTIONAL PAINT SKIN

Model 6295



Chassis	Ford E450	Height w/AC	11'-6"	Black	36 gal.
Engine	Ford V-10	Width	101"	LP Gas Tank	64 lbs.
Fuel	35	Wheelbase	208"	Furnace (BTU's)	30,000
GVWR	14,050	Fresh	34 gal.	Water Heater w/DSI	6 gal.
Length	29'-9"	Grey	36 gal.	Ext Storage	31.62 cu. ft.

Interior & Decor

- 7' Interior Ceiling Height
- Handcrafted Natural Hardwood Cabinet Fronts & Doors
- Privacy Curtain Cab
- Deluxe Carpet w/Pad
- Generous Overhead Storage
- 2-way Driver & Passenger Seat
- Coordinated Bedspreads & Pillows
- Decorator Curtains w/Valances (Std)
- Pleated Shades
- Non Skid Entry Step
- Queen Size Bed, Cab-Over
- Power Vent in Commode
- Tub Surround
- Mini Blinds Kitchen

Electrical System

- Easy Store 30' Elect. Power Cord
- Double Overhead Reading Lights
- 110 Volt Receptacles
- Ground Fault Circuit Interrupter

Bath & Water

- On Demand Water System
- City Water Hook-Up
- Lavatory w/ Base Cabinet Storage
- Bath Convenience Accessories
- Water Bypass Valve

Apliances

- 3-Burner Range
- 2-way Double Door Refrigerator
- Convection Microwave Oven
- 6 Gal. Elect. Ign. Water Heater
- 13,500 BTU Ducted Roof Air

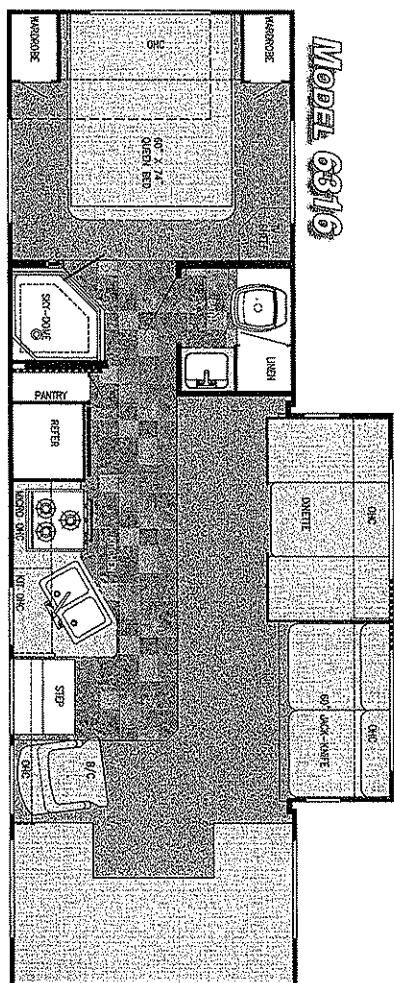
Chassis

- Skydome in Shower (most models)
- Medicine Cabinet

Exterior & Construction

- Welded Aluminum Cage Const.
- 4-Ply Laminated Walls, Roof & Floor
- Smooth Fiberglass Exterior

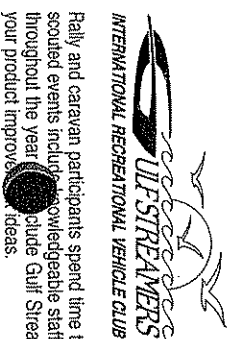
Model 6316



Chassis	Ford E450	Height w/AC	11'-6"	Black	36 gal.
Engine	Ford V-10	Width	101"	LP Gas Tank	64 lbs.
Fuel	35	Wheelbase	208"	Furnace (BTU's)	30,000
GVWR	14,050	Fresh	34 gal.	Water Heater w/DSI	6 gal.
Length	31'-7"	Grey	36 gal.	Ext Storage	38 cu. ft.

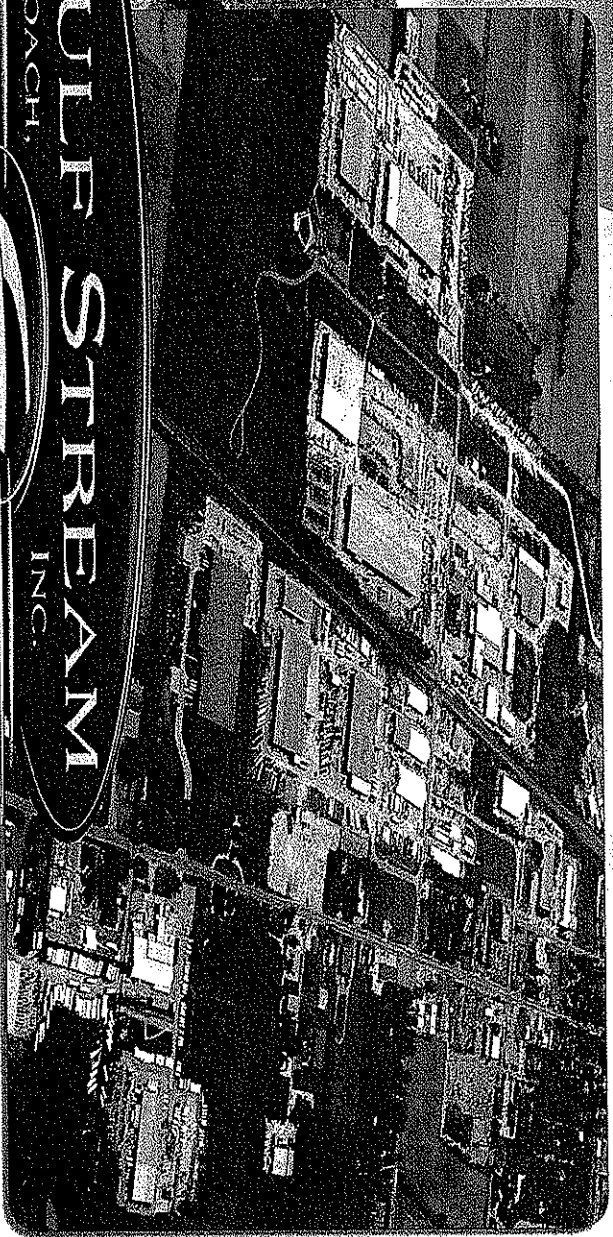
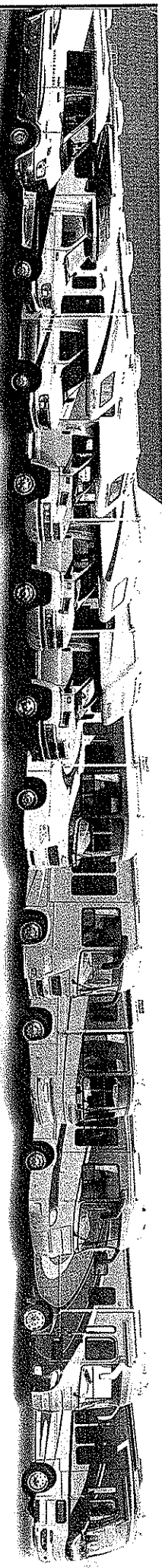
Popular Options

- Radiused Laminated Rubber Roof w/ Heliarc-Welded Aluminum Rafter's, and Exclusive Molded Roof Brick Insulation w/ Bubble Wrap Duct System
- Hydraulic-Operated Flush Floor Glide Out Room (slide out models)
- Tubular Steel Floor
- Laminated Floor w/ Metal Underbelly
- Foamed, Sealed and Undercoated
- Full Basement Storage (most models)
- Distinctive Exterior Graphics
- Expansive Radius Windows
- Outside Grab Handle
- Dead Bolt on Entry Door
- Slide-Out Room Awning
- 24 HR. EMERGENCY ROADSIDE ASSISTANCE
- One Year Coach-Net Membership
- Towing and Winching
- Flat Tie Change
- Mobile Mechanic
- Lookout
- Jump-Start / Battery Boost
- Glass Shower Door (6280)
- Range Cover
- Heated Holding Tanks
- Fiberglass Running Boards
- Hitch w/Plug
- Spare Tire and Carrier (N/A 6275)
- Aluminum Running Boards



The Gulf Streamers RV Club is a valuable benefit to all Gulf Stream owners. Members enjoy staying active and participating in the various rallies and caravans offered throughout the United States and Canada. Others simply enjoy the value of receiving their Main Stream, the club's 44-page newsletter, with all its up-to-date product information, service tips and company highlights. Whether or not group camping is a part of your RV use, everyone can benefit from the Emergency Road Service and Gulf Streamers Insurance options. Both are available at competitive rates with friendly, reliable service. Another great benefit is the 10% Program, where campgrounds throughout the U.S. and Canada provide Gulf Streamers with a 10 percent discount on camping. As a member, you'll also receive discounts on National Theme Parks and special attractions, including RV and travel guides, directories and magazines.

Rally and caravan participants spend time touring attractions, enjoying fabulous meals, taking in area highlights and shows, while having plenty of free time to relax or explore on their own. Our pre-scouted events include knowledgeable staff to assure you of the finest routes, the tastiest restaurants and the friendliest atmosphere. We're here to help make the most out of your RV experience. Special rallies throughout the year include Gulf Stream supplier seminars, complimentary minor repairs by Gulf Stream technicians, Gulf Stream dealer product displays and round table discussions to voice your product improvement ideas.



GULF STREAM FACILITIES...


Located in the heart of the Amish country, the complex, along with Gulf Stream's affiliate, Fairmont Homes, Inc., covers over 400 acres and includes more than 1.5 million square feet of state-of-the-art manufacturing facilities. With over 20 years of manufacturing experience producing quality Recreational Vehicles, Gulf Stream is the leading manufacturer of high quality and high value RV products that are distributed through a partnership relation with independent dealers who are focused on meeting customer expectations.



Quality, Comfort, Innovations

Your family and friends will feel safe and comfortable wrapped in Gulf Stream's "Cradle of Strength". Comfort, Quietness and Insulation from the elements is what you will experience from Gulf Stream's "Tried and Tested" Motorhomes. Compare... and you will find the exceptional value of a Gulf Stream Motorhome.

GULF STREAM EXCEPTIONAL VALUE...

 **VISIT**
WWW.GULFSTREAMRV.COM
FOR MORE DETAILED INFORMATION...
OR CALL 1-800-765-8787-EXT. 3288

Post Office Box 1005
NAPPANEE, IN 46550
• Your Gulf Stream Coach Dealer •

For more information and available options, contact your local Gulf Stream dealer, www.gulfstreamrv.com or Gulf Stream Coach, Inc., Gulf Stream Coach, Inc., reserves the right to make changes in prices, colors, materials, components and specifications and to discontinue models at any time without notice or obligation. Gulf Stream Coach, Inc., assumes no responsibility for any error in type or print. Photographs may show equipment or items that are optional and are not included in the purchase price of the coach. Test drive a current model at your nearest Gulf Stream dealer. © 2002 Gulf Stream Coach, Inc., Nappanee, Indiana U.S.A.