

CLASS A DIESEL MOTORHOMES

2006 Yellowstone

Real Diesel, Real Affordable



Yellowstone



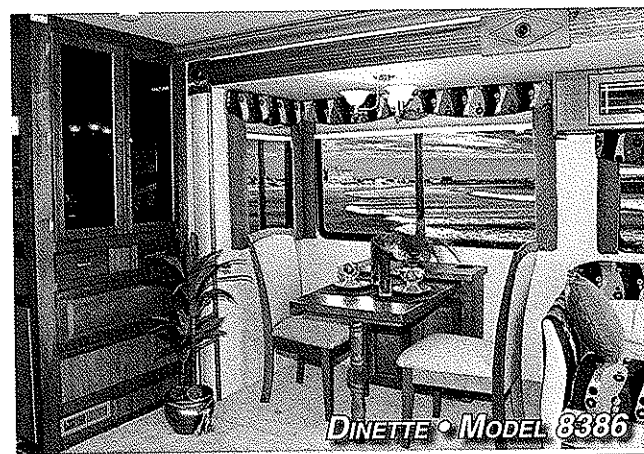
GALLEY CONVENIENCE...

Our wide-open galley offers all the comforts of your kitchen at home. 3-burner high performance range; 2-door, 2-way refrigerator and large convection microwave, you will be able to prepare any of your family's favorite meals.



COMFORT...

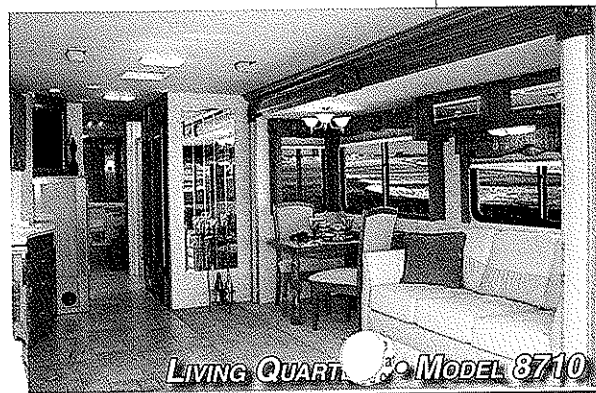
Deep set superslides in the main living area dramatically increase the living space of this Motorcoach. Yellowstone's very own Comfort Plus furniture adorns the entire RV.



LUXURIOUS DINING ...

Yellowstone delivers true comfort in the design and construction of the dinette table and seating. This optional free-standing dinette offers plenty of space for a full dinner setting enhanced by panoramic windows for the best open view while dining.

The optional free-standing dinette also features a self storing extension to accommodate comfortable seating of four adults.



SPACIOUS LIVING QUARTERS...

Open living areas that incorporate large slide rooms and residential style furniture make home away from home very comfortable.

The overhead flat screen TV and the entertainment cabinet provide plenty of storage for music and movies to entertain everyone on a rainy day or quiet evening.

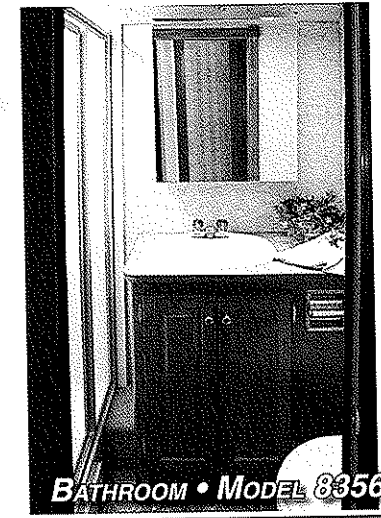


Yellowstone



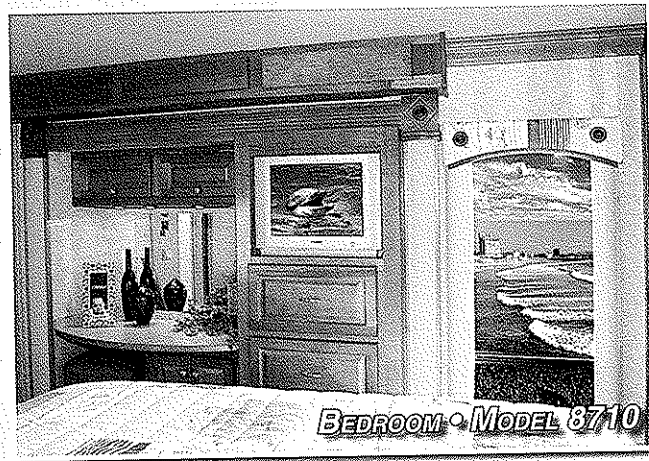
MODERN COCKPIT...

Driving the large and powerful Yellowstone may be intimidating at first but once you become accustom to the controls and smooth handling of the intense 350 horsepower machine you will feel right at home in our ergonomic cockpit designed to put the controls right at your fingertips.



BATHROOM...

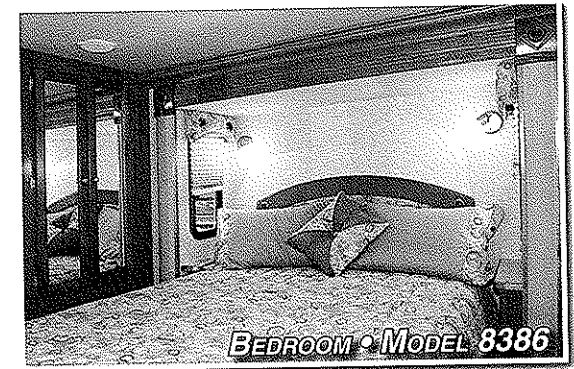
The bathroom in the Yellowstone makes it easy to prepare for the day ahead. The medicine cabinet mirror and under-sink storage gives you room to hide away personal products, and the skylight in the shower stall provides natural light and additional headroom for tall travelers.



BEDROOM

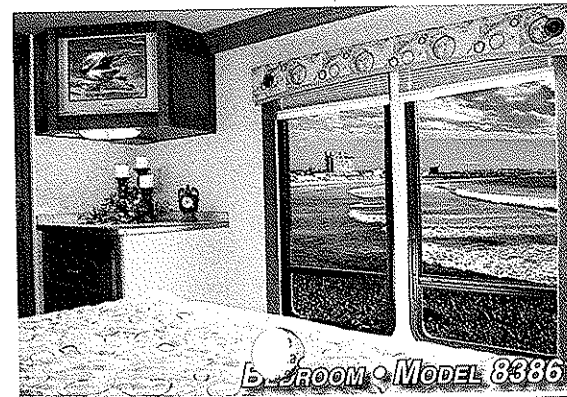
STORAGE...

The Bedroom of the Yellowstone delivers plenty of storage for both his and her clothing. All Floorplans include deep dresser drawers and large wardrobe storage to hang attire.



RESTFUL NIGHTS...

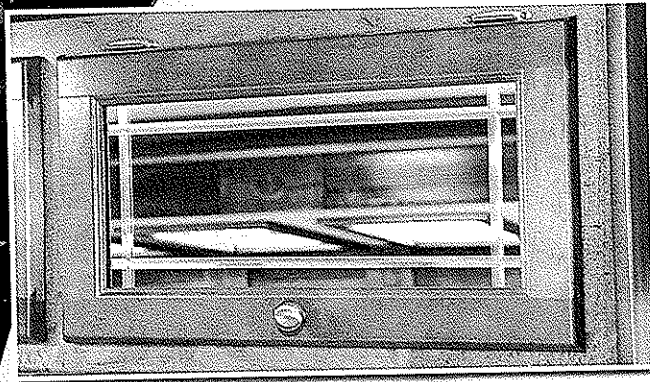
Yellowstone knows that a comfortable night's sleep is an integral part of a great travel experience. That's why we give you many amenities that you enjoy at home in our cozy bedroom areas. Items including a Queen size bed, windows at the head of the bed for ventilation, air conditioning, vanity mirror, overhead storage and Optional 20" flat screen television.





Yellowstone Exclusive Features & Benefits

**SOLID
HARDWOOD
CABINETRY**



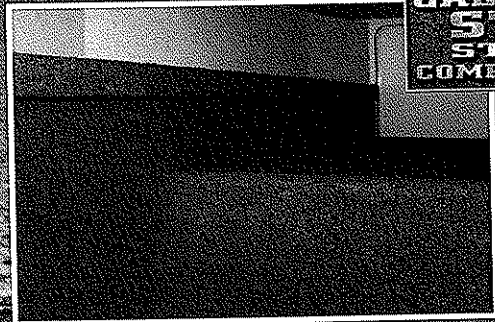
**PREDRILLED
HARDWOOD
CONSTRUCTION**

Our residential style cabinets are constructed of solid hardwood doors and fronts that are predrilled and screwed then they are stained and top coated with a furniture grade finish that provides long lasting beauty and durability as well as adding strength and quietness to your motorhome.

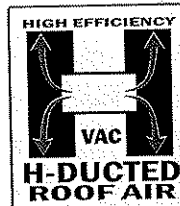
COMPETITOR'S CABINETRY

Other companies use wrapped cabinet fronts prone to peeling, fading and tearing. The softer composite wood used does not hold screws as well as hardwood resulting in loss of strength and squeaking. Discoloration will degrade the beauty and lower the value of the motorhome.

**GALVANIZED
STEEL
STORAGE
COMPARTMENTS**



Seamless, carpeted, galvanized steel storage compartments safely are your valuables. Rust protective paint and foam sealed



Dual metal H-Ducted air conditioning system with foil bubble wrapped in for superior climate control.

Excellent Weathering -
Maintaining the vehicle's quality appearance enhances its resale value.

Seamless
Slid Resistant • Puncture Resistant
FIBERGLASS ROOF

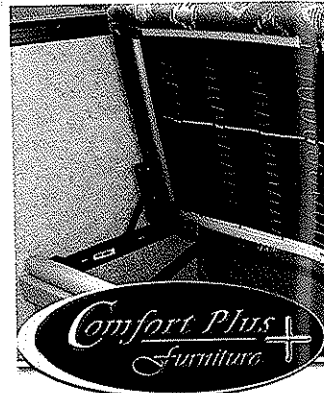
Tear Resistance - Flexroofs hard abuse resistant finish resists tearing, a condition that can cause leaks and lead to expensive repair.

Low Maintenance - Road grime can easily be removed with normal cleaning maintenance. Rubber chalking due to solar breakdown of the roof surface is eliminated, preserving the original appearance and resale value of the vehicle.

Stain Resistance - Fiberglass Flexroof is designed to resist staining and maintain its quality appearance.

Structural Integrity - Unlike conventional EPDM rubber roof membranes, Flexroof is a structural component of the roof system.

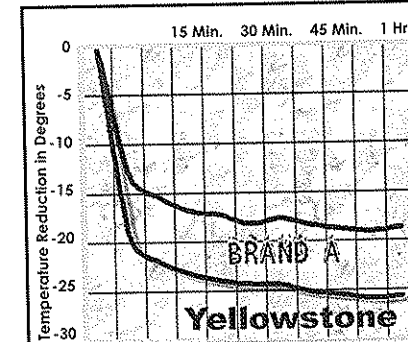
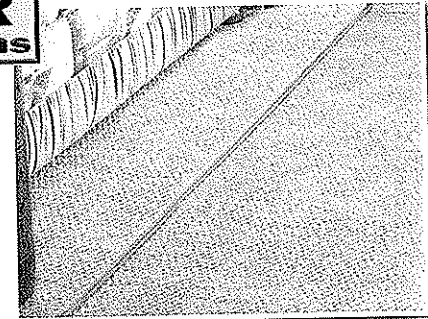
Textured Fiberglass - Helps dissipate heat and prevents tree limbs from tearing or scratching your roof.



Comfort Plus furniture features residential styling, solid construction, total comfort and a comprehensive warranty.

FLUSH FLOOR
Slide out rooms

Yellowstone offers true flush floor slide out rooms to give you more headroom in the slide and eliminates the step up into the slide room that you will experience in many of our competitors motorhomes.

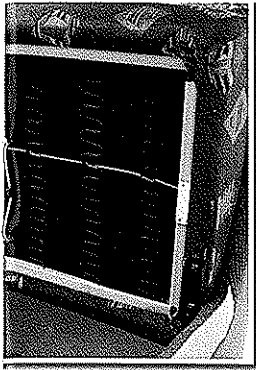


**Yellowstone
VS. BRAND A
Cool Down Comparison**

- At 15 minutes, Yellowstone cooled 7 degrees cooler.
- At 30 minutes, Yellowstone cooled 9 degrees cooler.
- At 1 hour, Yellowstone cooled 9 degrees cooler.

Finally, empirical data demonstrating the efficiency and performance of a roof air conditioning system versus a floor air conditioning system.
Winner: Roof air conditioning by Yellowstone

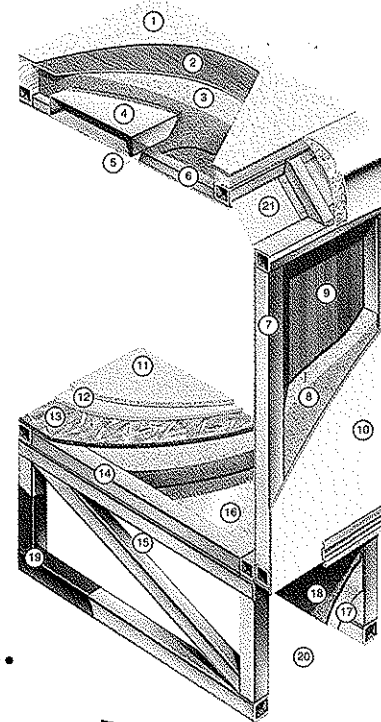
Cradle of Strength



Unlike traditional plywood and foam seating Comfort Plus dinette seating features the strength of steel and the comfort of a sprung cushion.

1. Seamless Fiberglass Roof For Greater Energy Efficiency and Dependability.
2. Luan Decking for Additional Strength.
3. Molded, High Density EPS (Expanded Polystyrene) Roof Brick Insulation - Provides Consistent Insulation Value as well as Superior Dimensional Rigidity.
4. One-Piece Formed Aluminum Air Conditioning Duct, Completely Surrounded By EPS Insulation.
5. Bubble-Wrapped Foil Insulation Provides Superior Insulation and Helps Prevent Condensation.
6. Rugged Welded Tubular Aluminum Roof Framing.
7. Rugged Heavy-Gauge Tubular Aluminum, Fixture Welded to Form the Sidewall Framing.
8. High-Density EPS Insulation Provides Superior Lamination and Bonding Characteristics and Insures Greater Energy Efficiency.
9. Interior Wall Panels Securely Laminated to Sidewall Framing.
10. "Super Slick" Fiberglass Exterior Vacuum-bond Laminated to Sidewall Framing for Lasting Beauty and Durability.
11. High-Quality Stain-Resistant Carpeting Available in Designer Coordinated Colors.

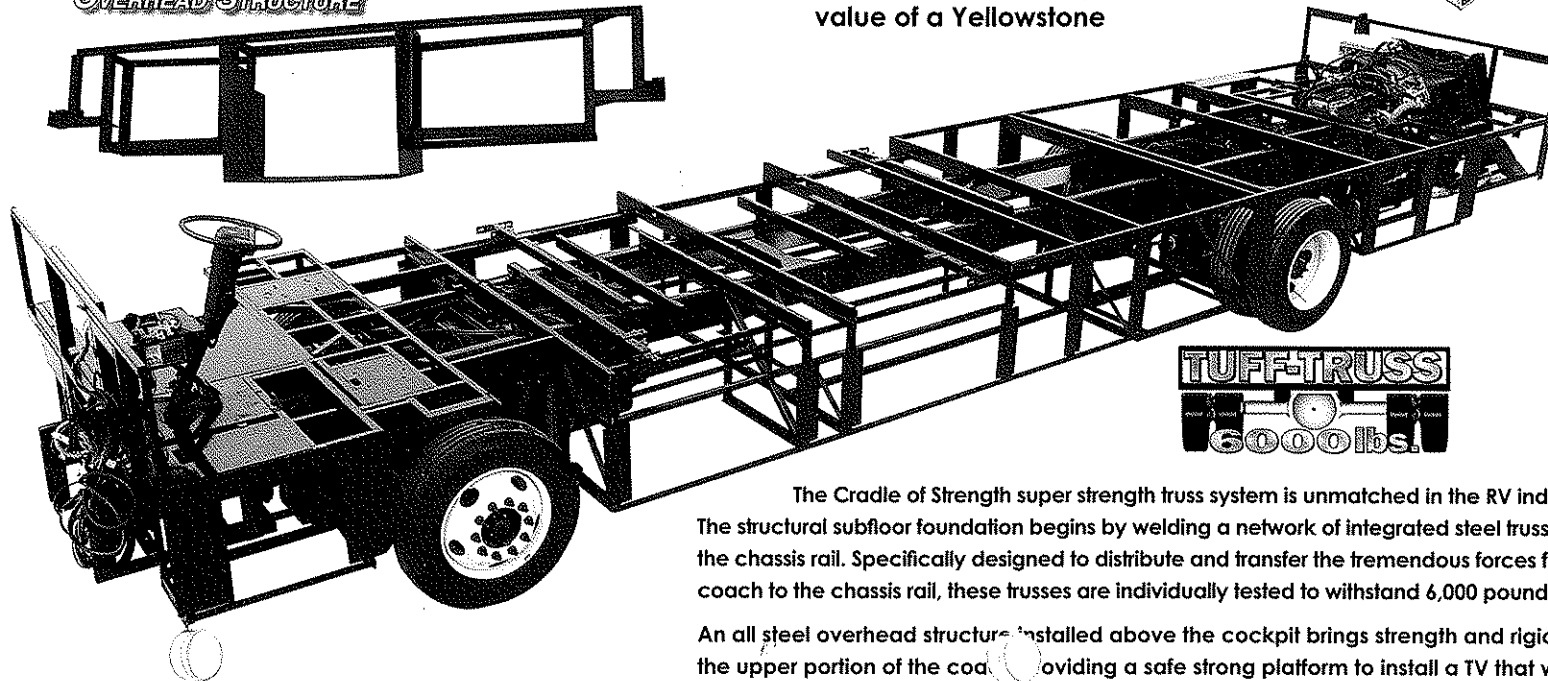
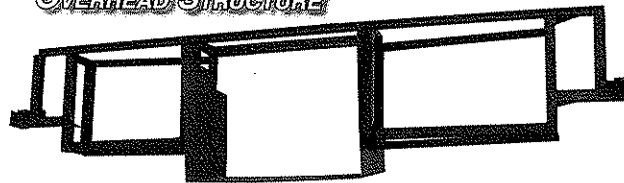
12. Extra-Thick Padding Under Carpet Provides Extra Comfort and Increases Carpet Durability.
13. Seamless Structurewood Floor Decking Laminated to Steel Floor Structure Assures a Quiet, Long-Lasting Rigid Floor.
14. Heavy-Gauge Tubular Steel Framing, Fixture Welded for Extra Strength and Stability.
15. Heavy-gauge Tubular Steel Framed, Fixture Welded Floor Truss System Provides the Strongest Foundation in the Industry.
16. Seamless Layer of Galvanized Steel Securely Laminated to the Steel Floor Framing.
17. Galvanized Steel Used to Form Each Storage & Holding Compartment.
18. Durable All-Weather Carpeting Completes Each Accessible Storage Compartment, Providing Extra Protection for Luggage and Valuables.
19. Rust-Prohibitive Paint Coating Applied to All Steel Framing Assures Corrosion and Rust Protection.
20. The Industry's Strongest, Most Spacious Exterior Storage Compartments.
21. Reinforced Heavy-Gauge Steel "W" Transition.



TAKE THE TIME TO COMPARE...

and you will see the exceptional value of a Yellowstone

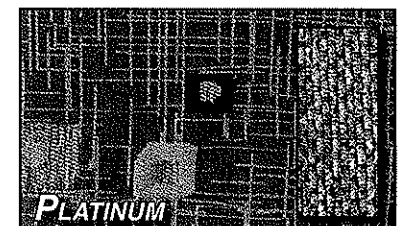
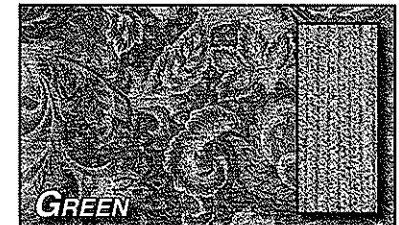
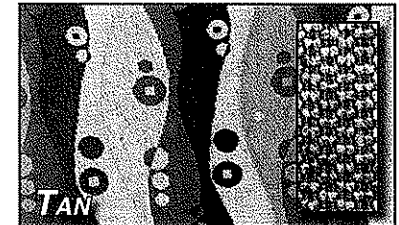
**ALL STEEL
OVERHEAD STRUCTURE**



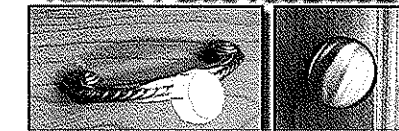
TUFF-TRUSS
6000 lbs!

The Cradle of Strength super strength truss system is unmatched in the RV industry. The structural subfloor foundation begins by welding a network of integrated steel trusses to the chassis rail. Specifically designed to distribute and transfer the tremendous forces from the coach to the chassis rail, these trusses are individually tested to withstand 6,000 pounds each.

An all steel overhead structure installed above the cockpit brings strength and rigidity to the upper portion of the coach, providing a safe strong platform to install a TV that will not break free in an impact while maximizing overhead storage.



NICKEL PLATE HARDWARE



Yellowstone

Exterior Features...

CONTEMPORARY LOOKS...

Full body paint and two graphic options both protect the exterior and offer a cutting edge look with classic simplicity. Yellowstone delivers the options you want to protect your investment, suit your budget and visual preference.

EXTERIOR STORAGE...

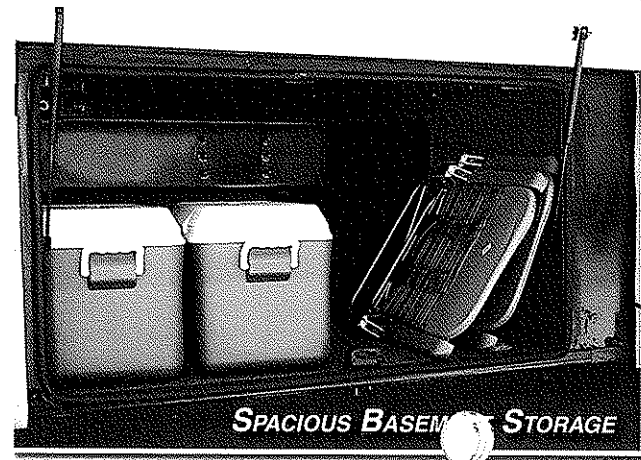
The practice of Raised Rail Construction delivers more Ceiling height while increasing the amount of underbody storage space.. Yellowstone uses one piece steel boxes in our underbody storage compartments which are then carpeted on the inside to protect your belongings while traveling down the road and coated with anti-corrosion paint on the underside to prevent deterioration. Slam latch doors on each storage compartment with lights in each and electrical outlets in two will provide all the conveniences you need to load and unload safely with ease.



DELUXE FULL BODY PAINT
SHOWN IN BLUE & BLACK, ALSO AVAILABLE IN EARTH & BURGANDY
(Yellowstone logos are vinyl decals)



STANDARD BODY PAINT WITH TECH VINYL GRAPHICS



SPACIOUS BASEMENT STORAGE

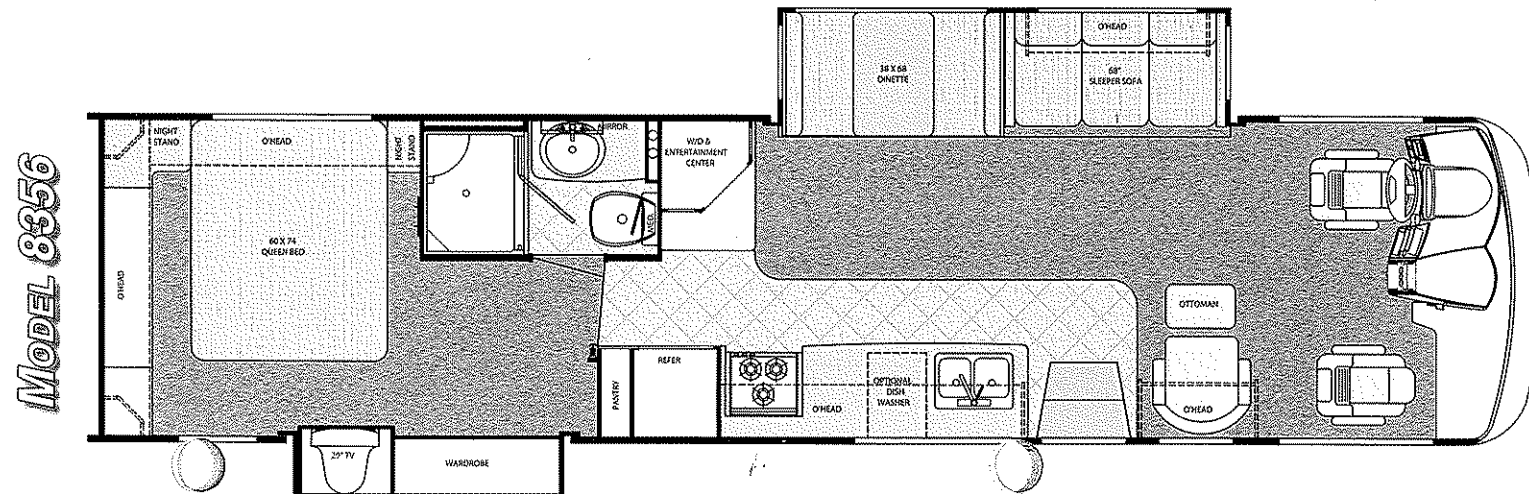
Yellowstone SE

BIG BLOCK DIESEL
AT A GREAT PRICE



YELLOWSTONE SE DIESEL PUSHER

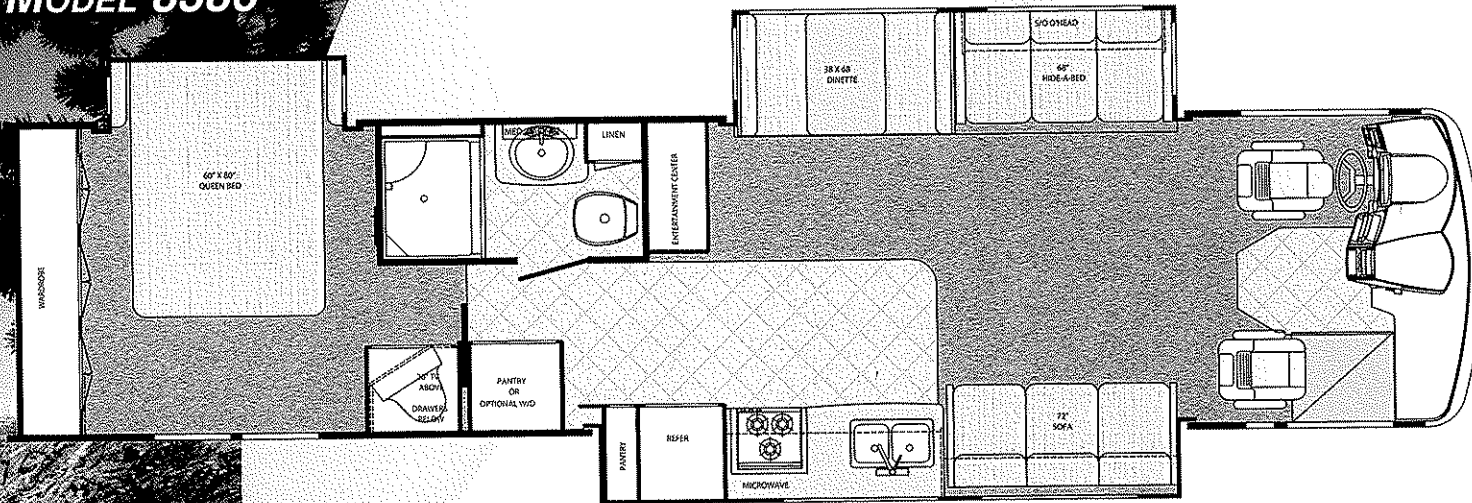
- 300hp Caterpillar Large Block Sleeved Diesel Engine
- 6 Speed Allison Transmission
- 28,000 lbs. GVWR
- Raised Rail Construction
- Full Air Suspension
- 7.5 Quiet Diesel Generator
- Full Air Brake System
- Two SlideRooms
- Front A/C and Optional Rear A/C
- Optional Home Theatre System w/DVD and 24" Flatscreen TV
- Seamless Fiberglass Roof
- Residential Crown Molding
- Hardwood Cabinetry
- Corian Kitchen Countertops
- Laminated Sidewalls
- Cradle of Strength Construction
- Painted Exterior with Hi-Tech Vinyl Graphics
- 40,000 BTU Front Furnace
- 25,000 BTU Rear Furnace



Chassis	Freightliner
Engine	300 Cat
Fuel	100
GVWR	28,000
Length	36'-4"
Width	10'1"
Height w/AC	11'-10"
Interior Height	80"
Wheelbase	228"
Fresh	70 gal.
Grey	75 gal.
Black	75 gal.
LP Gas Tank	115 lbs.
Furnace (BTU's)	40,000/25,000
Water Heater w/DSI	gal.

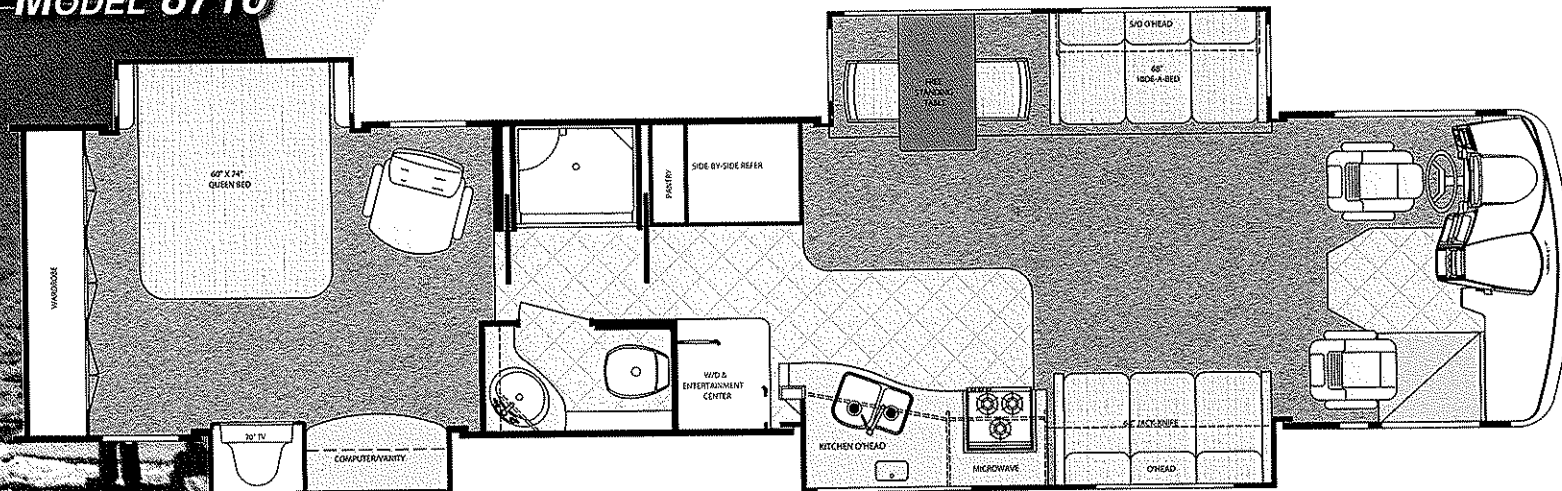
Yellowstone

MODEL 8386



Chassis	Freightliner
Engine	350 Cat
Fuel	100
GVWR	29,410
Length	38'-8"
Width	100"
Height w/AC	12'-3"
Interior Height	84"
Wheelbase	252"
Fresh	90 gal.
Grey	75 gal.
Black	75 gal.
LP Gas Tank	115 lbs.
Furnace (BTU's)	40,000/25,000
Water Heater w/DSI	10 gal.

MODEL 8710



Chassis	Freightliner
Engine	350 Cat
Fuel	100
GVWR	32,000
Length	40'-9"
Width	100"
Height w/AC	12'-3"
Interior Height	84"
Wheelbase	276"
Fresh	90 gal.
Grey	75 gal.
Black	75 gal.
LP Gas Tank	115 lbs.
Furnace (BTU's)	40,000/25,000
Water Heater w/DSI	10 gal.

Chassis

- 29,500 GVWR, 350 HP CAT FREIGHTLINER, 100 GAL FUEL TANK W/STEEL WHEELS (8386)
- 32,000 GVWR, 350 HP CAT FREIGHTLINER, 100 GAL FUEL TANK W/STEEL WHEELS (8710)

Exterior

- "Cradle of Strength" Construction:
 - Welded Steel Sub-Floor Truss System
 - 1-1/2" Tubular Metal Cage Construction on Sidewalls & Roof
 - Insulated Floors w/Virtually Seamless Structurewood Decking
 - Vacuum-Bond Laminated 2" Thick Sidewall Construction Smooth Filon Fiberglass
- PRE-MOLDED FRONT & REAR FIBERGLASS CAPS
- LAMINATED FIBERGLASS ROOF
- SLICK FIBERGLASS EXTERIOR W/GRAPHICS
- SINGLE PANE RADIUS WINDOW

Décor

- CORION KITCHEN COUNTERTOP
- LINOLEUM IN KITCHEN, BATH & HALL
- PLEATED SHADES
- METAL MINI BLIND KITCHEN
- PRIVACY CURTAIN
- CARPETED CEILING LINER
- DECORATIVE CROWN CEILING MOLDING
- OAK HARDWOOD INTERIOR
- MIRRORING MEDICINE CABINET

Heating & Cooling

- DASH A/C
- (1) 40,000 BTU & (1) 25,000 BTU FURNACES
- 13,500 BTU DUCTED ROOF A/C

Miscellaneous

- COAT HOOK
- ARCTIC PACKAGE
- STAINLESS STEEL WHEEL INSERTS
- EXTERIOR SIDEVIEW MIRRORS
- HYDRAULIC JACK LEVELING SYSTEM
- 10,000 LB TRAILER HITCH

- INTERIOR S.S. ENTRY ASSIST HANDLE
- CARPETED STORAGE BINS
- MUD FLAPS (FRONT & REAR)
- FIRE EXTINGUISHER
- DELUXE AWNING
- SLIDE OUT TOPPERS
- POWER STEPWELL COVER
- RALLY HOOK UP
- HOSE FAUCET
- TELEPHONE HOOK UP
- CABLE TV HOOK UP
- PAPER TOWEL ROLL DISPENSER
- HEATED HOLDING TANKS

Bath

- POWER VENT IN COMMODE & SHOWER AREA
- SKY DOME IN BATH
- SHOWER W/GLASS DOOR & SURROUND
- PORCELAIN STOOL W/SPRAYER

Electrical

- WALL CLOCK
- OVERHEAD DEFROST BLOWER
- BACK-UP MONITOR
- WALL SWITCHES FOR ALL CEILING LIGHTS
- AM/FM/CASSETTE STEREO W/CD PLAYER & SPEAKERS
- EMERGENCY START SWITCH IN DASH
- MAP LIGHTS
- ANTENNA W/AMPLIFIER, BOOSTER & 2 JACKS
- CB ANTENNA
- (1) PHONE JACK IN KITCHEN & (1) IN BEDROOM
- AUTO DOUBLE ELECTRIC STEP
- 24" FLAT SCREEN COLOR TV W/REMOTE IN FRONT OVERHEAD
- DVD READY
- DSS PREP
- LIGHTED EXTERIOR STORAGE BINS

Furnishings

- 2-TONE PILOT & COPILOT SEAT
- 3-POINT SEAT BELT
- SOFT TOUCH EURO RECLINER & OTTOMAN (PS) (8710)

- 60 X 74 BED W/DELUXE INNERSPRING MATTRESS (8710)
- 60 X 80 BED W/DELUXE INNERSPRING MATTRESS (8386)
- CLOTH SLEEPER (H-A-B) SOFA (DS)
- CLOTH SOFA (PS)
- BEDROOM CHAIR (8710)
- VANITY BENCH (8710)
- COMFORT PLUS DINETTE BOOTH BED (8386)
- FREE STANDING DINETTE W/(2) RESIDENTIAL CHAIRS (PS) (8710)
- (2) THROW PILLOWS (PER SOFA) &
- (2) BEDROOM PILLOWS
- SILVERWARE DRAWER

Appliances

- LARGE DOUBLE DOOR, 2-WAY REFER (RM2662)
- MONITOR PANEL
- 30" OTR CONVECTION MICROWAVE
- 3-BURNER TOP
- FLUSH STOVE TOP COVER
- 10 GAL DSI WATER HEATER
- 115# LP GAS BOTTLE
- CARBON MONOXIDE DETECTOR
- LP GAS LEAK DETECTOR
- PREP FOR WASHER/DRYER

Power

- (2) 12 V AUXILIARY BATTERIES (GROUP 27)
- BATTERY DISCONNECT
- 50 AMP SERVICE W/AUTO TRANSFER SWITCH & 75 AMP CONVERTOR
- GENERATOR READY

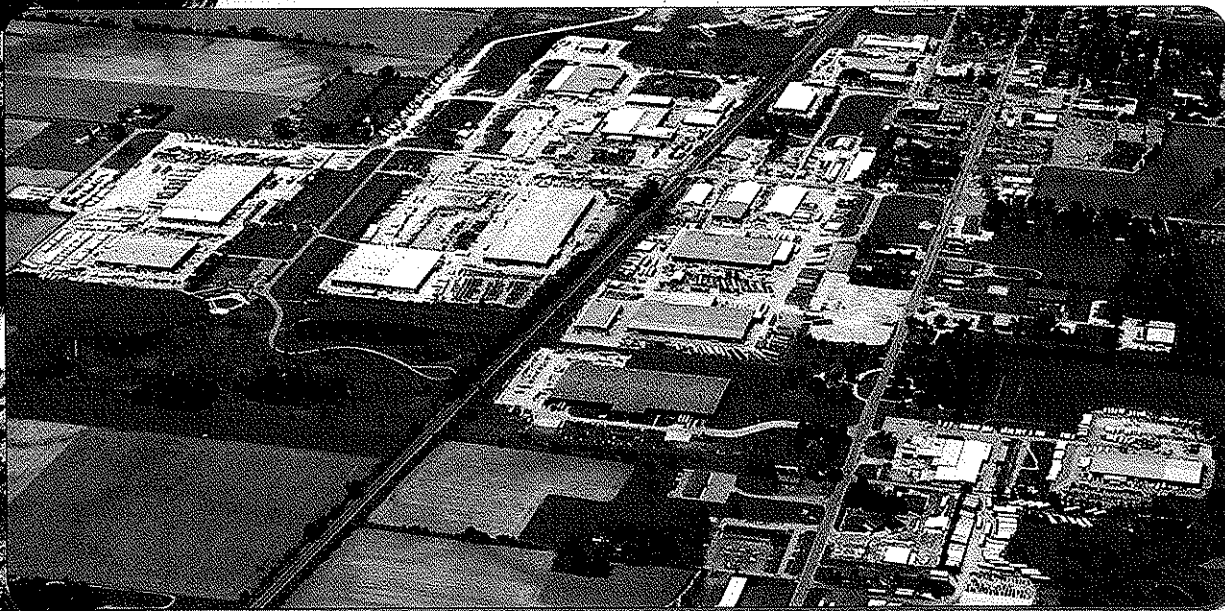
Popular Options

- ☐ ENTRANCE DOOR AWNING
- ☐ ELECTRIC MAIN AWNING
- ☐ THERMOPANE WINDOWS
- ☐ HEATED & REMOTE MIRRORS
- ☐ FULLY AUTO HYDRAULIC JACKS
- ☐ REAR LADDER
- ☐ MAPLE HARDWOOD INTERIORS
- ☐ REAR ROCKGUARD
- ☐ FULL PAINT W/PAINTED GRAPHICS
- ☐ SAND & BUFF
- ☐ BEDROOM 13,500 BTU DUCTED ROOF A/C
- ☐ 15,000 BTU DUCTED A/C IPO 13,500 BTU A/C
- ☐ 3-SPEED FANTASTIC ATTIC FAN
- ☐ 2000 WATT INVERTER
 - W/(4) 6 VOLT BATTERIES IPO (2) 12 VOLT
- ☐ 7.5 ONAN QUIET DIESEL GENERATOR
- ☐ 7.5 GENERAC QUIET DIESEL GENERATOR
- ☐ 2-TONE 6-WAY POWER PILOT/COPILOT SEAT
- ☐ SOFT TOUCH SOFA IPO CLOTH (PS)
- ☐ SOFT TOUCH SLEEPER (H-A-B) SOFA IPO CLOTH SLEEPER SOFA (DS)
- ☐ EURO RECLINER IPO BEDROOM CHAIR (8710)
- ☐ F/S DINETTE W/(2) RESIDENTIAL DINING CHAIRS IPO BOOTH DINETTE (8386)
- ☐ COMFORT PLUS BOOTH DINETTE IPO FREE STANDING (8710)
- ☐ (2) FOLDING CHAIRS
- ☐ 20" FLAT SCREEN COLOR TV IN BEDROOM
- ☐ DVD PLAYER
- ☐ DELUXE AIR HORNS # 2029GS
- ☐ SURROUND SOUND SYSTEM W/DVD PLAYER
- ☐ LARGE 2-WAY REFER
 - W/ICEMAKER & PURIFIER (RM2862IM)
- ☐ SIDE BY SIDE REFER
 - W/ICEMAKER & PURIFIER (NDR1292IMH)
- ☐ COMBO WASH/DRYER
- ☐ HOLDING TANK FLUSH KIT

24 HR. EMERGENCY ROADSIDE ASSISTANCE

- One Year Coach-Net Membership
- Towing and Winching
- Flat Tire Change
- Mobile Mechanic
- Delivery of emergency Fluids
- Jump-Start / Battery Boost
- Lockout

Yellowstone



YELLOWSTONE FACILITIES...

Located in the heart of the Amish country, the complex, along with Yellowstone's affiliate, Fairmont Homes, Inc., covers over 400 acres and includes more than 1.5 million square feet of state-of-the-art manufacturing facilities. With over 20 years of manufacturing experience producing quality Recreational Vehicles, Yellowstone is the leading manufacturer of high quality and high value RV products that are distributed through a partnership relation with independent dealers who are focused on meeting customer expectations.

**FOR MORE DETAILED INFORMATION...
OR CALL 1-800-765-8787-EXT. 3288**

• YOUR YELLOWSTONE DEALER •

YELLOWSTONE EXCEPTIONAL VALUE...

Your family and friends will feel safe and comfortable wrapped in Yellowstone's "Cradle of Strength". Comfort, Quietness and Insulation from the elements is what you will experience from Yellowstone's "Tried and Tested" Motorhomes. Compare... and you will find the exceptional value of a Yellowstone Motorhome.

For more information and options, contact your local Yellowstone dealer, www.gulfstreamRV.com or Gulf Stream Coach, Inc. Gulf Stream Coach, Inc. assumes no responsibility for any error in this advertisement or print reproduction of specifications or floorplans in this brochure. Photographs may show equipment or items that are optional and are not included in the purchase price of the coach. Test drive and review a current model at your nearest Gulf Stream dealer. © 2002 Gulf Stream Coach, Inc., Nappanee, Indiana U.S.A.