



CONQUEST
MOTORHOMES

Off the map, **on the mark.**

Ultra

"The real voyage of discovery consists not in seeking new landscapes but in having new eyes."
-Marcel Proust



2008 Ultra

CONQUEST
MOTORHOMES

Off the map, **on the mark.**



LIVING CONVENIENCE...

Our spacious living quarters feature a well equipped galley, space saving entertainment center, stain resistant plush carpet, comfort plus furniture, and H-ducted ventilation system giving you all the comforts you would enjoy at home.

Ultra
SUPER-C



6341 Kitchen Galley features a 3-burner high performance range; 2-door, 2-way refrigerator, deluxe countertops and large convection microwave.



OPTIONAL OVERHEAD ENTERTAINMENT CENTER



6341 Comfort Plus/Dream Dinette offers more than a great place to visit and eat. It's soft spring loaded cushions turn down to form a sleeping area.





Decor



Carpet

Emerald



Carpet

Tan



Carpet

Remington

Off the map, **on the mark.**

CHASSIS COMFORT AND SAFETY...

When living the life of an RVer, half the fun is experienced enjoying the open road traveling to your destination. It's no wonder that Conquest motorhomes, Chevrolet and International focus on the ergonomics, handling, visibility and weight capabilities of the Chassis to make your travels safe and comfortable.

Chevy Kodiak Chassis



Gas Only

Rust-Prohibitive
Coating on Frame

Breakaway
Mirrors

Easy Access
Pull Forward Hood

Powerful Chevrolet
Gas Engine

Up-Level Headlights
with chrome treated
front bumper and grill

Multi-Leaf
Suspension

Four Wheel
Disc Breaking

Ergonomically
Spaced Steps

- **INTENSE 19,500 LB. GVWR**
- **UP TO 3,000 LBS. CARGO CARRYING CAPACITY**
- **SUPERIOR TOWING CAPACITY 26,000 GCWR**
- **10,000 LB. HITCH RATING***
- **19.5" TIRES**

STABIL-RIDE Suspension System

The best just got better. The optional Stabil-Ride™ suspension system integrates parabolic leaf springs, auxiliary springs, a stabilizer bar and tuned shocks, designed to provide a low maintenance, stable ride comparable to the ride of a diesel pusher. Enjoy unsurpassed handling with reduced body sway, particularly while cornering, and superior straight-line stability.

Gulf Stream specifies an extra heavy duty hitch rated at 10,000 lb. However it is up to the owner not to exceed the Gross Combined Weight Rating (GCWR).

GCWR is calculated as follows:

- 19,500 GVWR is loaded to its maximum of 19,500 lb. This would leave 6,500 lb. towing capacity to 26,000 GCWR.

Towing capacity can be increased by reducing payload appropriately.

ALLISON™ 1000 SERIES AUTOMATIC TRANSMISSION (standard)

5 speed	Gross Torque (lb-ft)
1000	620

VORTEC™ 8.1 LITRE V8 GASOLINE ENGINE (standard)

HP	Torque LB-FT
325hp	450

BEST-IN-CLASS TURNING RADIUS



Chevy Kodiak
C4500/C5500
35' Turn Diameter
54° Wheel Cut

Midsize Car

Ford
F-450/F-550* - 52°

Three-step prime/base/clear coat process for hood and cab provides outstanding resistance to corrosion and fading, lowers maintenance costs and increases resale value.

- **GCWR - 33,000**
- **GVWR - 25,900**

Two-way breakaway mirror design can withstand an impact up to 9-mph, which eliminates door damage and reduces repair and replacement costs.

- **Heavier Duty 2500 Series Allison Transmission!**

Standard composite construction headlights with halogen bulbs are longer-lasting and easy to replace for increased uptime.



A **NAVISTAR** COMPANY

- **VT365 International Diesel; 300 HP**

Powder-coated components resist rust, chips and scratches for added durability and longer-lasting good looks.



- **266"-278" Wheel Base**

A clean frame rail CA (cab to axle) simplifies body and equipment mounting.

- **15,000 lb. Hitch Rating***

The front windshield features over 2,000 sq. in (12,903 sq. cm.) of glass for excellent visibility. The one-piece design, thicker outer glass and swept-back angle increases safety and noise control - while helping to deflect road debris.

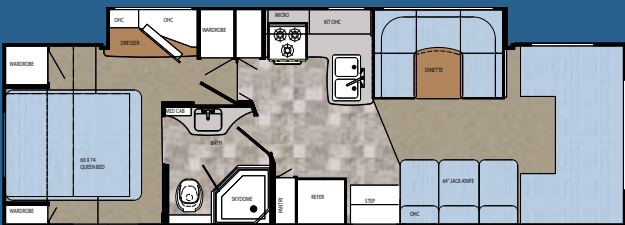
Interior door handles wide door openings, three-point entry system and non-slip treaded steps provide easy entry and egress.

- **140 Gallon Fuel Tank**

A set-back axle provides outstanding maneuverability and a tight turning radius, making it easier to negotiate through cramped spaces, which increases driver efficiency and productivity.

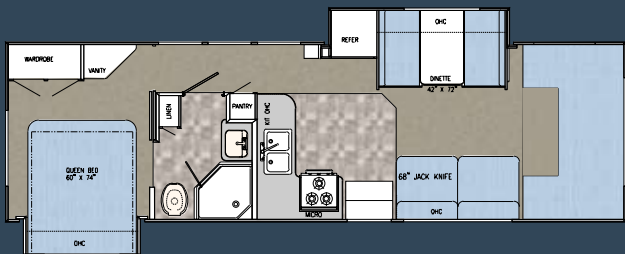
**towing based on model and customer load requirements

MODEL 6319 BK- FULL WALL SLIDE!



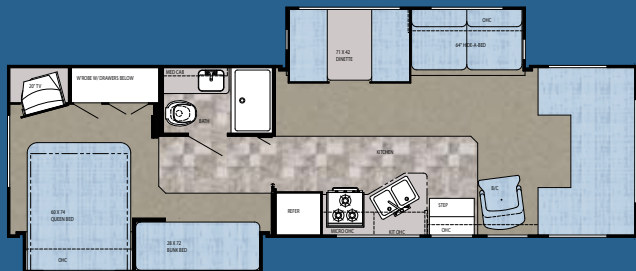
Chassis	Chevy Kodiak/International 4200
Engine	325 Hp. V-8
Fuel	80/140 gal.
GVWR	19,500/25,900
Length	32'-11"/33'-3"
Height w/AC	11'-10.5"/12'-7"
Width	101"
Wheelbase	213.5"/266"
Fresh	80 gal.
Grey	52 gal.
Black	52 gal.
LP Gas Tank	64 lbs.
Furnace (BTU's)	35,000
Water Heater w/DSI	6 gal.
Ext Storage	93.11/109.36 cu. ft.

MODEL 63110 BK



Chassis	Chevy Kodiak/International 4200
Engine	325 Hp. V-8/V-8
Fuel	80/140 gal.
GVWR	19,500/ 25,900
Length	TBD
Height w/AC	11'-10.5"/12'-7"
Width	101"
Wheelbase	TBD/266"
Fresh	TBD
Grey	TBD
Black	TBD
LP Gas Tank	TBD
Furnace (BTU's)	35,000
Water Heater w/DSI	6 gal.
Ext Storage	TBD cu. ft.

MODEL 6341 BK



Chassis	Chevy Kodiak/International 4200
Engine	325 Hp. V-8
Fuel	80/140 gal.
GVWR	19,500/25,900
Length	34'-9"/35'-8"
Height w/AC	11'-10.5"/12'-7"
Width	101"
Wheelbase	239"/266"
Fresh	85 gal.
Grey	52 gal.
Black	52 gal.
LP Gas Tank	64 lbs.
Furnace (BTU's)	35,000
Water Heater w/DSI	6 gal.
Ext Storage	75.47/113.4 cu. ft.



OPTIONAL SKIRT PAINT

Chassis

- CHEVY, KODIAK V8 ENGINE, 80
- GAL FUEL TANK W/POWER LOCKS & WINDOWS
- LP GAS TANK
- CARBON MONOXIDE DETECTOR
- LP LEAK DETECTOR
- SM. 2-WAY DBL DOOR REFER
- OTR MICROWAVE W/3 BURNER TOP

Exterior

- FULL WALL SLIDE (6319)
- SLIDE OUT ROOM (SOFA, DIN) (6341)
- SLIDE OUT ROOM (BED/BUNK BEDS) (6341)
- SLIDE OUT ROOM DIN/REFER (63110)
- SLIDE OUT ROOM BED (63110)
- WELDED ALUMINUM PERIMETER FRAME
- LAMINATED RADIUS DUCTED ROOF
- LAMINATED STEEL FRAME FLOOR W/METAL UNDERBELLY
- RADIUS TINTED WINDOWS
- REAR WINDOW (6319)
- SLIDE OUT TOPPER (6319)
- (2) SLIDE OUT TOPPERS (6341, 63110)
- BASEMENT STORAGE
- SPRING CLIPS FOR STORAGE DOORS
- BUMPER COVER
- DOUBLE ELECTRIC STEP
- STAINLESS STEEL WHEEL INSERTS
- UNDERCOAT PAINT
- REAR MUD FLAPS
- HEATED & REMOTE EXTERIOR SIDEVIEW MIRRORS
- STABIL-RIDE STABILIZER

Décor

- ROLL GOODS IN KITCHEN, BATH, & HALL; CARPET OTHER AREAS
- HARD ROCK MAPLE INTERIOR
- FLUORESCENT LIGHT OVER KITCHEN SINK

Heating & Cooling

- DASH AC
- 13,500 BTU DUCTED AC
- 35,000 BTU FURNACE

Appliances

- 6 GAL ELECTRONIC IGNITION WATER HEATER W/BY-PASS VALVE

Electrical

- CEILING LIGHT WALL SWITCH
- MONITOR PANEL
- GENERATOR SWITCH & HOUR METER
- TV JACK IN BEDROOM
- CABLE TV READY
- CD PLAYER IN CAB
- TV ANTENNA W/AMP & BOOST
- 19" LCD COLOR TV ACROSS FROM BUNKS W/WIRELESS HEADSETS (6341)

Bath

- CORNER SHOWER W/PLATINUM NEO-ANGLE SHOWER DOOR (N/A 6341)
- 24 X 38 SHOWER W/ACCORDION SHOWER DOOR (6341)
- SKYDOME
- POWER BATH VENT

Power

- AUXILIARY BATTERY
- 50 AMP SERVICE W/AUTO CHANGE OVER & CONVERTER
- GENERATOR PREP
- BATTERY DISCONNECT

Furnishings

- QUEEN BED W/LIFTS, INNERSPRING MATTRESS, BEDSPREAD & PILLOWS
- (2) 28 X 72 BUNK BEDS (6341)
- SINGLE BARREL CHAIR (6341)
- 2-WAY D/P SEATS W/ARMRESTS
- H-A-B SOFA (6341)
- J-KNIFE SOFA (PS) (6319, 63110)
- U-SHAPED DINETTE (6319)
- PLEATED PRIVACY DOOR (6341)
- PLEATED NIGHT SHADES THROUGHOUT
- INSIDE HANDRAIL

Popular Options

- ☐ **ULTRA SUPER C PACKAGE (REQUIRED)**
 - MAPLE M&T CABINET DOORS
 - HARDWOOD STILES & TRIM
 - ELECTRIC AWNING
 - SUPERSLICK FIBERGLASS EXTERIOR WALLS
 - DREAM DINETTE (N/A 6319)
 - COMFORT PLUS BOOTH DINETTE (N/A 6319)
 - 10,000 LB HITCH
 - RUNNING BOARDS
 - SIDE CABOVER ENTERTAINMENT CENTER W/ LCD COLOR TV
 - CENTRAL VAC SYSTEM
- ☐ **INTERNATIONAL DIESEL PACKAGE**
 - 25,900 GVWR; 300 HP DIESEL
 - 140 GALLON FUEL TANK
 - 6.0 DIESEL GENERATOR
- ☐ 5.5 ONAN GAS GENERATOR
- ☐ EMERGENCY START SWITCH
- ☐ DUAL AUXILIARY BATTERIES
- ☐ FRONT WINDOW
- ☐ REAR WINDOW(N/A 6319)
- ☐ LADDER
- ☐ SPARE TIRE & CARRIER
- ☐ BLACK FLUSH TANK
- ☐ JACKS
- ☐ EXTERIOR PAINTED SKIRT
- ☐ 11,000 BTU DUCTED REAR AC
- ☐ 15,000 BTU DUCTED AC IPO 13,500 AC
- ☐ ARCTIC PACKAGE
- ☐ EURO CHAIR IPO BARREL CHAIR (6341)
- ☐ SOFT TOUCH LEATHER J-KNIFE SOFA (6319, 63110)
- ☐ SOFT TOUCH LEATHER H-A-B SOFA IPO CLOTH (6341)
- ☐ 6-WAY SOFT TOUCH LEATHER D/P SEATS
- ☐ DELUXE COMFORT PLUS MATTRESS
- ☐ UPGRADED WOOD DASH
- ☐ VINYL CEILING
- ☐ BACK-UP MONITOR
- ☐ 3-SPEED FANTASTIC FAN (KITCHEN)
- ☐ (7) FLUORESCENT LIGHTS
- ☐ DSS PRE-WIRE
- ☐ DVD PLAYER (N/A W/OPTION #10923 HOME THEATRE SURROUND SOUND)
- ☐ HOME THEATRE SURROUND SOUND
- ☐ OUTSIDE ENTERTAINMENT CENTER
- ☐ FULL CABOVER ENTERTAINMENT CENTER W/LCD COLOR TV
- ☐ DUAL FLIP DOWN TVs IN BUNKS(6341) IPO LCD IN HALLWAY
- ☐ REAR LCD COLOR TV W/REMOTE
- ☐ LRG 2-WAY DOUBLE DOOR REFER
- ☐ RANGE COVER
- ☐ OPTION A - WARDROBE IPO BUNK BEDS (6341)

OPTION A - WARDROBE

Off the map, **on the mark.**

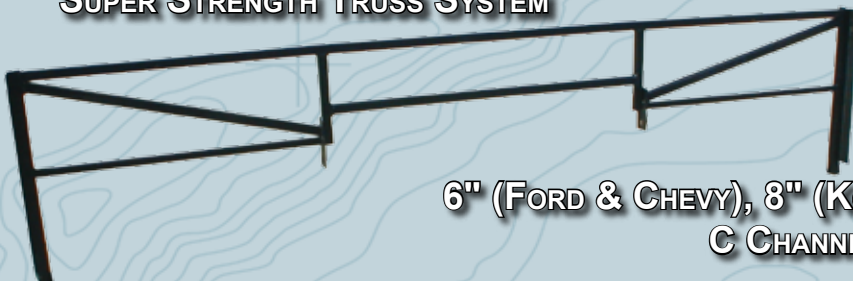


CONSTRUCTION...

Quality, Comfort, Strength and Value are four great words to describe our mind set while designing and constructing the conquest lineup of products. You can see and feel the quality and attention to detail we gave every component. From the strength of our foundation, roof, floor and sidewalls, down to the comfort of our seat cushions, nothing was skipped.

Ultra

SUPER STRENGTH TRUSS SYSTEM



6" (FORD & CHEVY), 8" (KODIAK) & 10" (INTERNATIONAL) C CHANNEL EXTENSION

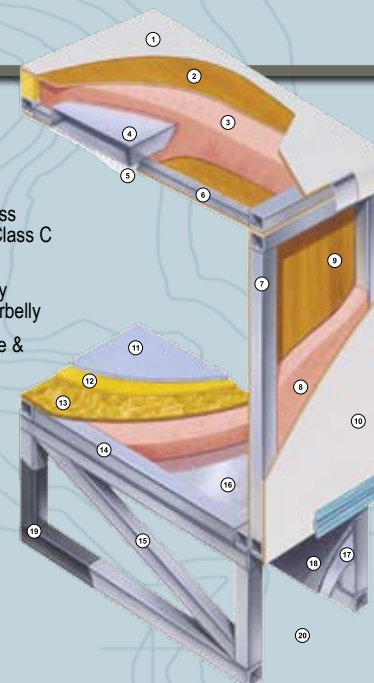
The super strength truss system is unmatched in the class C industry. The structural subfloor foundation begins by welding a network of steel web trusses to the chassis rail. Specifically designed to distribute and transfer the tremendous forces from the coach to the chassis rail these trusses are individually tested to withstand 6,000 pounds each.

When the chassis is stretched, Gulf Stream stands alone in the industry by using a full (6" on LE) or (8" on Super C and 10" on International) C channel extension versus the traditional 4" or less. This practice adds to the strength of the foundation and offers peace of mind that towing is safe on an extension that is true to the chassis.



ULTRA, Dare to Compare

1. Rubber Roof For Greater Energy Efficiency and Dependability.
2. Lauan Decking for Additional Strength.
3. Molded, High Density EPS (Expanded Polystyrene) Roof Brick Insulation - Provided Consistent Insulation Value as well as Superior Dimensional Rigidity.
4. One-Piece Formed Aluminum Air Conditioning Duct, Completely Surrounded By EPS Insulation. LE & Super C
5. Bubble-Wrapped Foil Insulation Provides Superior Insulation and Helps Prevent Condensation.
6. Rugged, Yet Light-weight, Welded Tubular Aluminum Roof Framing.
7. Rugged Heavy-Gauge Tubular Aluminum, Fixture Welded to Form the Sidewall Framing.
8. High-Density EPS Insulation Provides Superior Lamination and Bonding Characteristics and Insures Greater Energy Efficiency.
9. Interior Wall Panels Securely Laminated to Sidewall Framing.
10. "Super Slick" Fiberglass Exterior Vacuum-bond Laminated to Sidewall Framing for Lasting Beauty and Durability. (Option)
11. High-Quality Stain-Resistant Carpeting Available in Designer Coordinated Colors.
12. Extra-Thick Padding Under Carpet Provides Extra Comfort and Increases Carpet Durability.
13. Floor Decking Laminated to Steel Floor Structure Assures a Quiet, Long-Lasting Rigid Floor and comes with a 10-Year Warranty.
14. Heavy-Gauge Tubular Steel Floor Framing, Fixture Welded to Extra Strength and Stability.
15. Heavy-gauge Tubular Steel Webbed Tuff-Truss Floor Truss System Provides the Strongest Class C Foundation in the Industry.
16. Seamless Layer of Galvanized Steel Securely Laminated to the Steel Floor Framing. (Underbelly)
17. Galvanized Steel Used to Form Each Storage & Holding Compartment.
18. Durable All-Weather Carpeting Completes Each Accessible Storage Compartment, Providing Extra Protection for Luggage and Valuables.
19. Rust-Prohibitive Paint Coating Applied to All Steel Framing Assures Corrosion and Rust Protection.
20. The Industry's Strongest, Most Spacious Exterior Storage Compartments.





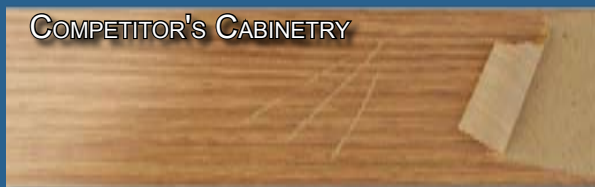
Super C & LE only

- Unlike traditional plywood and foam seating Comfort Plus Seating features the strength of steel and the comfort of a sprung dinette cushion.



PRE-DRILLED
HARDWOOD
CONSTRUCTION

**SOLID
HARDWOOD
CABINETRY**



COMPETITOR'S CABINETRY

- Our residential style cabinets are constructed of solid hardwood doors and fronts that are pre-drilled and screwed then they are stained and top coated with a furniture grade finish that provides long lasting beauty and durability as well as adding strength and quietness to your motorhome.

Other companies use wrapped cabinet fronts prone to peeling, fading and tearing. The softer composite wood used does not hold screws as well as hardwood resulting in loss of strength and squeaking. Discoloration will degrade the beauty and lower the value of the motorhome.

Added, *Value*



Super C only

- The Gulf Stream Class C's have nearly 7' interior ceilings for a residential look and feel.



Super C & LE only

- Dual metal H-Ducted air conditioning system with foil bubble wrapped insulation for improved climate control.



- Conquest has eliminated the carpeting on the built in stair well to make the cleaning process easier and to add traction so there is less likely to be slipping when maneuvering in and out of the vehicle. Several models also have the magnetic door stays that are easy to use and dependable.



- Seamless, carpeted, galvanized steel storage compartments safely cradle your valuables. Rust protective paint and foam sealed for extended life and a quiet ride.



Super C only
N/A on 6319 Model

- Gulf Stream Class C's offer flush floor slides for a residential look and feel with 6 foot ceilings.

Value, **Added**

G.O.L.D. Program

(Gulf Stream Ownership)

Lifetime of Dedication)



Gulf Stream is dedicated to our customers and their enjoyment of our products. Our golden promise is to call you within four weeks of the new vehicle purchase date welcoming you to the Gulf Stream family. This call, made by your dedicated customer care person, is to let you know that if you ever need assistance with the operation of components, troubleshooting, or if you ever need to locate an authorized service center, you can rest assured that help is but a phone call away. With the G.O.L.D. Program we'll be there for you for the lifetime of your RV.

Coach-Net®

24 HR. EMERGENCY ROADSIDE ASSISTANCE

- One Year Coach-Net Membership
- Towing and Winching
- Flat Tire Change
- Mobile Mechanic
- Delivery of emergency Fluids
- Jump-Start / Battery Boost
- Lockout

**2 YEAR
UNLIMITED MILEAGE
TRANSFERABLE
WARRANTY**
ON STRUCTURAL COMPONENTS*

One year unlimited mileage total use warranty under normal use against defects in material and/or workmanship in construction and original components. *For purposes of this warranty, "Structural components" shall be limited to the structure of the side walls, front and back walls, roof and floor. See the official written Gulf Stream Coach, Inc. Limited Warranty for details.

Off the map, **on the mark.**

Limited Edition Package...

Our LE package takes the standard Conquest to the next level of comfort and value with the addition of twenty one features to enhance your new motorhome.

Ultra

LE

 **MAPLE MORTISE & TENON CABINET DOORS**




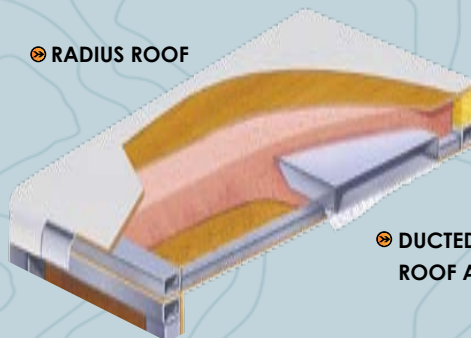
 **HARDWOOD TRIM**



 **HARDWOOD CABINET STILES**



 **RADIUS ROOF**



 **DUCTED
ROOF A/C**



 **ALUMINUM BED BASE**



 **COMFORT PLUS/
DREAM DINETTE**



 **UPGRADED LIGHTING**



 **EXTERIOR ACRYLIC
GRAB HANDLE**



 **LIGHTED TRUNKS**



 **UPGRADED DASH**



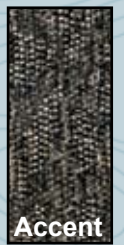


6319 Floorplan

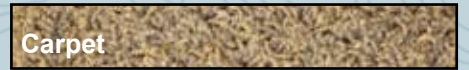
Decor



Main



Accent

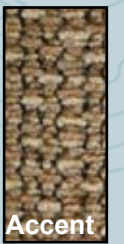


Carpet

Emerald



Main



Accent



Carpet

Tan



Main



Accent



Carpet

Remington

Off the map, **on the mark.**



Specifications & Floorplans...

We map out our standards and options so that you can make your decisions wisely. Check out our wide range of floorplans and sleeping arrangements and choose the best to suit your traveling needs.

Ultra
LE



STANDARD EXTERIOR GRAPHICS



OPTIONAL PAINTED SKIRT

Chassis

- 12,500 GVWR, 158" WB, FORD E-350 V-10 ENGINE (6237, 6280, 6267)
- 158" WB, FORD E-45, V-10, 6.8L RNH., 55 GAL FUEL TANK & POWER LOCKS & WINDOWS (6319, 63110, 63111, 6316)

Exterior

- SMOOTH FIBERGLASS EXTERIOR WALLS
- RADIUS TINTED WINDOWS
- REAR WINDOW (6237, 6319)
- SIDE CABOVER WINDOW
- KITCHEN WINDOW
- BASEMENT STORAGE
- SPRING CLIPS FOR STORAGE DOORS
- UNDERCOAT PAINT
- SINGLE ELECTRIC STEP (6319, 63111)
- BUMPER COVER
- MAG LOOK WHEEL COVERS
- REAR MUD FLAPS
- FULL WALL SLIDE (6319)
- SLIDE OUT TOPPER (6316)
- SLIDE OUT TOPPERS (63110, 63111)
- SLIDE OUT ROOM (SOFA, DIN) (6316)
- SLIDE OUT ROOM (REFER/DIN) (63110)
- SLIDE OUT ROOM (BED) (63110)
- SLIDE OUT ROOM (SOFA/STOVE) (63111)
- SLIDE OUT ROOM (BUNK BEDS/WARDROBE) (63111)

- WELDED ALUMINUM PERIMETER FRAME
- LAMINATED FLAT NON-DUCTED ROOF
- LAMINATED STEEL FRAME FLOOR W/METAL UNDERBELLY

Décor

- ROLL GOODS THROUGHOUT COACH
- KITCHEN COUNTERTOP EXTENSION (6280)

Heating & Cooling

- DASH AC
- 25,000 BTU FURNACE (6267, 6237, 6280)
- 30,000 BTU FURNACE (63110, 63111, 6316, 6319)

Electrical

- TV TRAY IN BEDROOM (6280, 6316)
- MONITOR PANEL
- CABLE TV READY
- CD PLAYER
- TV ANTENNA W/AMP BOOST
- TV JACK IN BEDROOM (NA 6237)
- FLUORESCENT LIGHT OVER KITCHEN SINK
- CEILING LIGHT WALL SWITCH

Bath

- POWER BATH VENT
- SKYDOME
- GLASS SHOWER DOOR (6280, 6316, 6319, 63110)
- SHOWER CURTAIN (6237, 6267, 63111)

Power

- BATTERY DISCONNECT
- AUXILIARY BATTERY
- CONVERTER WITH CHARGER & AUTO CHANGE OVER
- GENERATOR PREP

Furnishings

- PLEATED WINDOW SHADES
- INSIDE HANDRAIL
- PRIVACY CURTAIN IN BEDROOM (6237, 6316)
- PLEATED PRIVACY DOOR (6280, 6267, 63111)
- SIDE CABOVER TV CABINET
- DINETTE BOOTH BED
- QUEEN BED W/ INNERSPRING MATTRESS (NA 6267, 6237)
- 2-WAY DR/PASS SEATS W/ARM REST
- J-KNIFE SOFA (NA 6237, 6267)
- SINGLE BARREL CHAIR (6267, 6316)

Appliances

- 6 GAL ELECTRONIC IGNITION WATER HEATER W/BY-PASS VALVE
- LP GAS TANK
- CARBON MONOXIDE DETECTOR
- LP LEAK DETECTOR
- SMALL 2-WAY DOUBLE DOOR REFER
- 3-BURNER RANGE W/OVEN
- MICROWAVE OVEN

Popular Options

- 14,050 GVWR, 159" WB, CHEVY VORTEC 6.0 ENGINE (6316, 63110, 63111)

☐ LIMITED EDITION PACKAGE

- MAPLE M&T CABINET DOORS
- DREAM DINETTE
- COMFORT PLUS DINETTE
- UPGRADED LIGHTING
- HARDWOOD STILES & TRIM
- WOOD POCKET DOOR (6316)
- RADIUS DUCTED ROOF
- G-SOUND
- INTERIOR UPGRADE FABRICS
- SIDE CABOVER ENTERTAINMENT CENTER W/20" LCD COLOR TV
- CARPET IN LIVING ROOM & BEDROOM
- EXTERIOR ACRYLIC GRAB HANDLE
- LIGHTED TRUNKS
- ALUMINUM BED BASE
- RANGE COVER
- UPGRADED DASH
- SOFT TOUCH VINYL CEILING
- DUCTED ROOF A/C

☐ CONQUEST PACKAGE (REQUIRED)

- 4.0 GENERAC GENERATOR – ENCLOSED
- 13,500 BTU ROOF AIR CONDITIONER
- ELECTRIC AWNING
- CENTRAL VAC SYSTEM

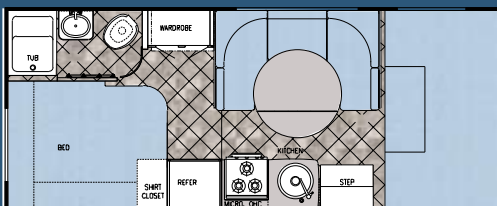
☐ EMERGENCY START

- ☐ 4.0 ONAN GENERATOR - ENCLOSED
- ☐ 15,000 BTU A/C IPO 13,500 A/C
- ☐ HEATED HOLDING TANKS (N/A W/CSA)

- ☐ STAINLESS STEEL WHEEL LINERS
- ☐ SLICK FIBERGLASS WALLS
- ☐ HEATED & REMOTE MIRRORS
- ☐ HITCH W/PLUG
- ☐ SPARE TIRE & CARRIER (N/A 6319)
- ☐ REAR WINDOW (NA 6237)
- ☐ FRONT WINDOW (N/A #12154)
- ☐ LADDER
- ☐ ALUMINUM RUNNING BOARDS
- ☐ FIBERGLASS RUNNING BOARDS
- ☐ EXTERIOR SKIRT PAINT
- ☐ OUTSIDE RINSE & WASH SPRAY SYSTEM (N/A 6237)
- ☐ BLACK FLUSH TANK
- ☐ BACK UP MONITOR
- ☐ 3-SPEED FANTASTIC FAN
- ☐ (7) FLUORESCENT LIGHTS
- ☐ DSS PRE-WIRE
- ☐ FULL ENTERTAINMENT CENTER W/LCD COLOR TV (N/A 6319)
- ☐ OUTSIDE ENTERTAINMENT CENTER
- ☐ PHONE JACK
- ☐ REAR FLAT SCREEN COLOR LCD TV (6319)
- ☐ 6-WAY POWER OPTIMA D/P SEATS IPO CLOTH (NA CHEVY)
- ☐ TWIN BUNK BED W/WARDROBE & INNERSPRING MATTRESSES (6280, 6316)
- ☐ J-KNIFE SOFA IPO DINETTE (6280)
- ☐ SOFT TOUCH J-KNIFE (DS) SOFA (6316, 63111)
- ☐ SOFT TOUCH J-KNIFE (PS) SOFA (6280, 6319, 63110)
- ☐ DELUXE COMFORT PLUS MATTRESS
- ☐ LARGE 2-WAY DOUBLE DOOR REFER
- ☐ WARDROBE IPO BUNK BEDS

MODEL W6237 B

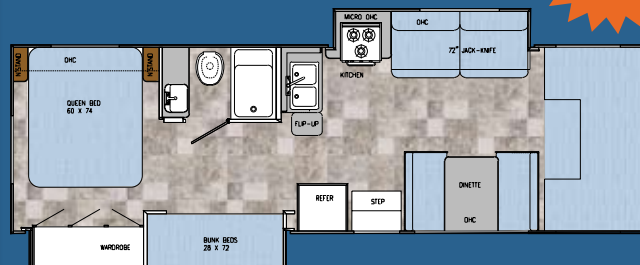
HUGE Storage!



Chassis	Ford
Engine	V-10
Fuel	55 gal.
GVWR	12,500
Length	23'-7"
Height w/AC	11'-3"
Width	101"
Wheelbase	158"
Fresh	40 gal.
Grey	27 gal.
Black	27 gal.
LP Gas Tank	42 lbs.
Furnace (BTU's)	25,000
Water Heater w/DSI	6 gal.
Ext Storage	87.84 cu. ft.

MODEL W63111 B

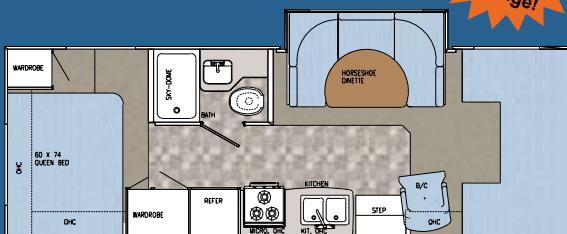
New Floorplan!



Chassis	Chevy Workhorse/Ford Opt.
Engine	V-8/V-10
Fuel	57/55 gal.
GVWR	14,050/14,500
Length	31'-11"/32'-6"
Height w/AC	11'-3"
Width	101"
Wheelbase	208"/209"
Fresh	38 Gal.
Grey	36 Gal.
Black	36 Gal.
LP Gas Tank	42 lbs.
Furnace (BTU's)	30,000
Water Heater w/DSI	6 gal.
Ext Storage	82.2 cu. ft.

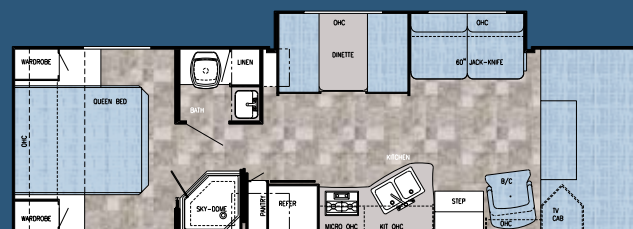
MODEL W6267 B

New Floorplan HUGE Storage!



Chassis	Ford
Engine	V-10
Fuel	55 gal.
GVWR	12,500
Length	28'-3"
Height w/AC	11'-3"
Width	101"
Wheelbase	196"
Fresh	40 Gal.
Grey	36 Gal.
Black	27 Gal.
LP Gas Tank	42 lbs.
Furnace (BTU's)	25,000
Water Heater w/DSI	6 gal.
Ext Storage	61.98 cu. ft.

MODEL W6316 B- SUPER SLIDE!



Chassis	Chevy Workhorse/Ford Opt.
Engine	V-8/V-10
Fuel	57/55 gal.
GVWR	14,050/14,500
Length	31'-7"/ 32'-0"
Height w/AC	11'-6"
Width	101"
Wheelbase	208"/209"
Fresh	40 gal.
Grey	36 gal.
Black	27 gal.
LP Gas Tank	42 lbs.
Furnace (BTU's)	30,000
Water Heater w/DSI	6 gal.
Ext Storage	64.81 cu. ft.

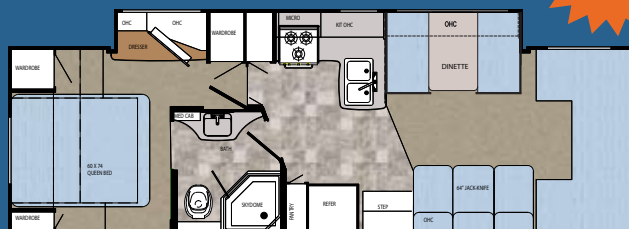
MODEL W6280 B



Chassis	Ford
Engine	V-10
Fuel	55 gal.
GVWR	12,500
Length	29'-7"
Height w/AC	11'-3"
Width	101"
Wheelbase	196"
Fresh	40 gal.
Grey	36 gal.
Black	27 gal.
LP Gas Tank	42 lbs.
Furnace (BTU's)	25,000
Water Heater w/DSI	6 gal.
Ext Storage	61.98 cu. ft.

MODEL W6319 B- FULL WALL SLIDE!

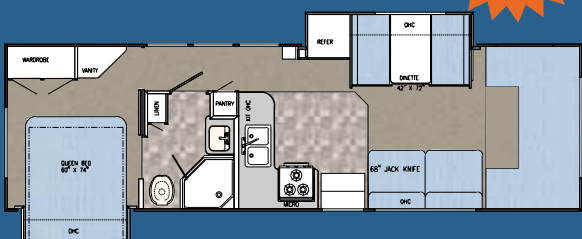
Industry Exclusive!



Chassis	Ford
Engine	V-10
Fuel	55 gal.
GVWR	14,500
Length	31'-7"
Height w/AC	11'-3"
Width	101"
Wheelbase	209"
Fresh	40 gal.
Grey	36 gal.
Black	27 gal.
LP Gas Tank	42 lbs.
Furnace (BTU's)	30,000
Water Heater w/DSI	6 gal.
Ext Storage	72.12 cu. ft.

MODEL W63110 B

New Floorplan!



Chassis	Ford/Chevy Workhorse Opt.
Engine	V-10/V-8
Fuel	55/57 gal.
GVWR	14,500/14,050
Length	32'-4"/32'-10"
Height w/AC	11'-3"
Width	101"
Wheelbase	208"/209"
Fresh	34 Gal.
Grey	36 Gal.
Black	36 Gal.
LP Gas Tank	42 lbs.
Furnace (BTU's)	30,000
Water Heater w/DSI	6 gal.
Ext Storage	89.33 cu. ft.



CONQUEST
MOTORHOMES



CONQUEST
MOTORHOMES

Off the map, **on the mark.**

Ultra



The Conquest Checkpoint is the outward physical symbol of our role as industry leaders. Our exacting standards for creating the best possible RV Customer experience are the direction the rest of the industry seeks.

Beyond the beaten path, to a new destination.

Conquest constantly looks to the future, casting a clear vision of "the next big thing" and making it happen. We don't follow trends; we set them. Beyond imagination, to reality.

GULF STREAM



Conquest Motorhome Division is a member of the Gulf Stream Coach family of products. As a privately owned company with nearly 25 years of RV manufacturing experience, Gulf Stream has set itself apart from the rest of the RV industry by giving the market exactly what it's looking for. We are constantly talking to our customers and dealers, taking their suggestions, and implementing them in our products. We also use Lean Manufacturing Techniques, Six-Sigma Quality Control, Creative Standardization and 5 S practices to maximize our production efficiency and eliminate waste. Our efficiency has received accolades from Vincennes University for Total Quality Management. These practices have also gained recognition from the state of Indiana, as we have received the Indiana Governor's Award for Recycling, making us one of the few eco-friendly manufacturing companies in the industry. All these initiatives go back to one goal... To give you the highest value product offerings, quality construction, innovative features, contemporary designs, and unmatched service and on-going support.



The Gulf Streamers RV Club is a valuable benefit to all Gulf Stream owners. Members enjoy staying active and participating in the various rallies and caravans offered throughout the United States and Canada. Go to www.gulfstreamcoach.com for more information.

**LEARN MORE ABOUT OUR WIDE RANGE OF PRODUCTS AT
WWW.CONQUESTMOTORHOMES.COM**

POST OFFICE BOX 1005 • NAPPANEE, IN 46550 • 1-800-289-8787

For more information and available options, contact your local Conquest dealer, www.conquestmotorhomes.com or Gulf Stream Coach, Inc. Gulf Stream Coach, Inc., reserves the right to make changes in prices, colors, materials, components and specifications and to discontinue models at any time without notice or obligation. Gulf Stream Coach, Inc., assumes no responsibility for any error in type or print reproduction of specifications or floorplans in this brochure. Photographs may show equipment or items that are optional and are not included in the purchase price of the coach. Test drive and review a current model at your nearest Conquest dealer. ©2008 Gulf Stream Coach, Inc., Nappanee, Indiana U.S.A.

01-08-SP-10k Ver2