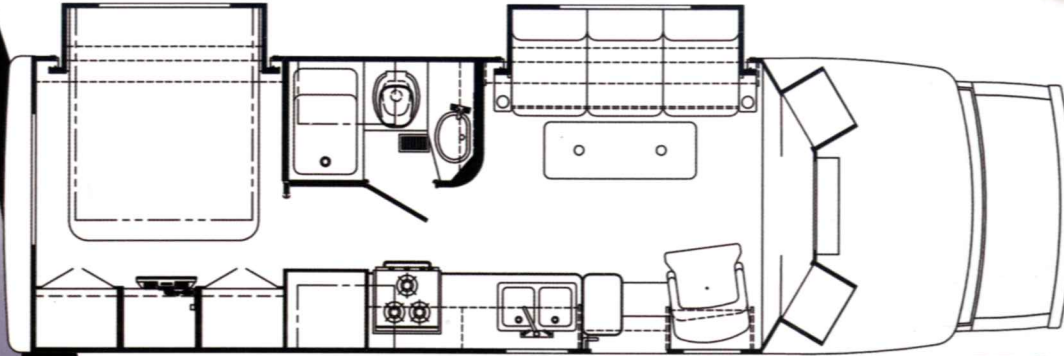


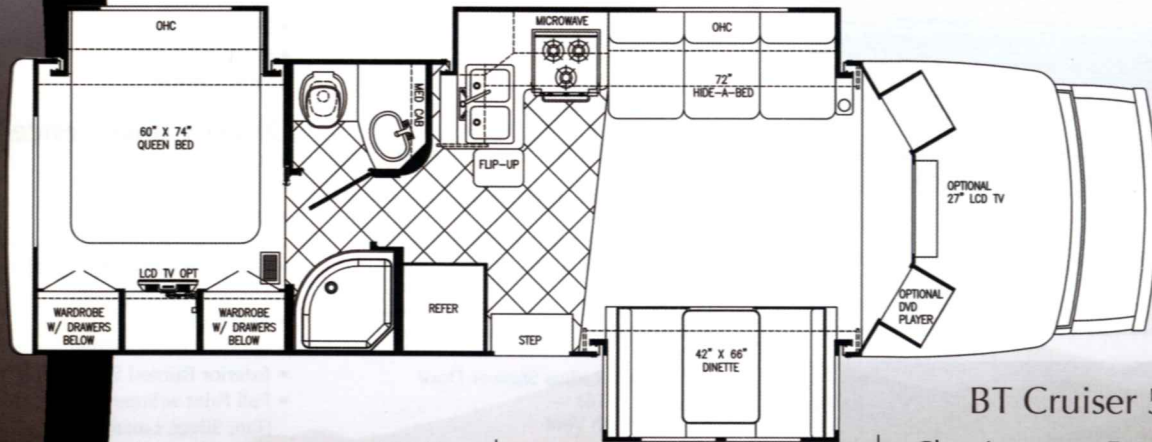


2011
Floor Plans



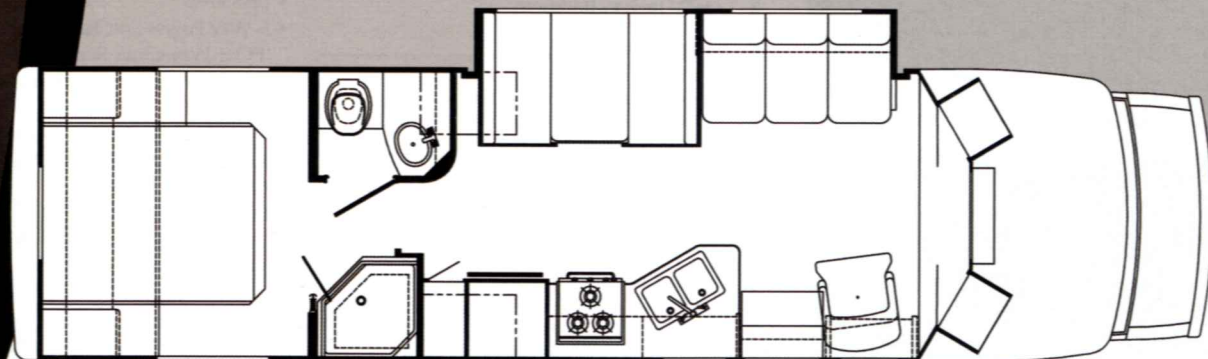
BT Cruiser 5272

Length	27'11"	Black Water	32 gal.	Chassis	Ford
Height W/AC	10' 4"	Water Heater	6 gal.	Engine	V-10
Width	96"	LP Gas Tank	42 lbs.	Fuel	55 gal.
Fresh Water	38 gal.	Furnace BTU's	30,000	Wheel Base	196"
Grey Water	36 gal.			GVWR	14,500



BT Cruiser 5291

Length	30'6"	Black Water	32 gal.	Chassis	Ford
Height W/AC	10' 4"	Water Heater	6 gal.	Engine	V-10
Width	96"	LP Gas Tank	42 lbs.	Fuel	55 gal.
Fresh Water	38 gal.	Furnace BTU's	30,000	Wheel Base	208"
Grey Water	36 gal.			GVWR	14,500

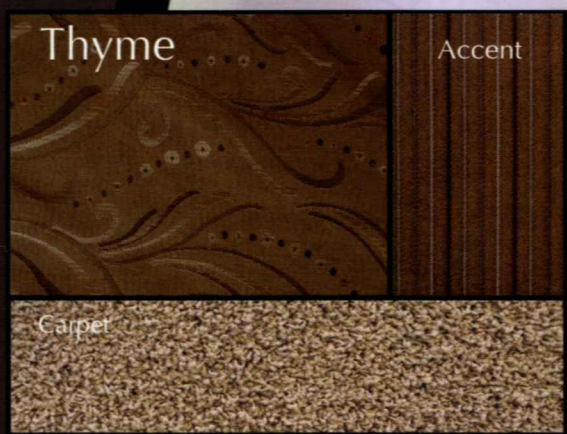
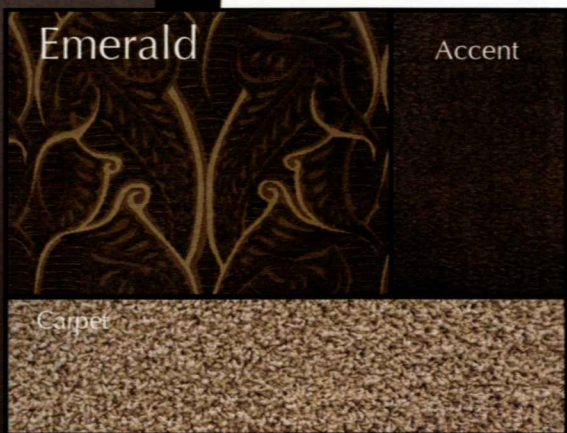


BT Cruiser 5316

Length	31'7"	Black Water	32 gal.	Chassis	Ford
Height W/AC	10' 4"	Water Heater	6 gal.	Engine	V-10
Width	96"	LP Gas Tank	42 lbs.	Fuel	55 gal.
Fresh Water	38 gal.	Furnace BTU's	30,000	Wheel Base	208"
Grey Water	36 gal.			GVWR	14,500



Fabric Options



Standards

Chassis

- 158" WB, Ford E-45, V-10 Engine, 55 Gal Fuel Tank, Power Locks & windows

Exterior

- Seamless G3 Fiberglass Exterior Walls
- Slide Out Bedroom (5272, 5291)
- Slide Out Sofa Room (5272)
- Slide Out Kitchen/Sofa room (5291)
- Atrium Slide Out Dinette Room (5291)
- Slide Out Dinette/Sofa Room (5316)
- Welded Aluminum Perimeter Frame
- Fiberglass Front & Rear Cap & Wings
- Laminated Steel Frame Floor w/ Metal Underbelly
- Slide Out Topper (5316)
- (2) Slide Out Toppers (5272, 5291)
- Rear Window
- Radius Tinted Windows
- Stainless Steel Wheel Inserts
- Acrylic Entry Door Assistance Bar
- Foam Seal & Undercoating

Décor

- Roll Goods Throughout Coach
- Carpet in Bedroom
- Hard Rock Maple Interior w/ M&T Doors
- Fabric Ceiling
- Window Treatments
- Overhead Reading Lights
- Fluorescent Light Over Kitchen Sink

Heating & Cooling

- Dash AC
- 15,000 BTU Low Profile Ducted AC
- 30,000 BTU Furnace

Bath

- Bi-fold Shower Door & Surround (5272)
- Rounded Radius Shower Door (5291, 5316)
- Power Bath Vent
- Skydome

Electrical

- TV Cabinet
- Platinum Lights in Bedroom
- Ceiling Light Wall Switch
- Monitor Panel
- Generator Switch & Hour Meter
- TV Antenna w/ Amp & Boost
- Cable TV Ready
- TV Jack in Bedroom

Furnishings

- 2-Way D/P Seats
- Soft Touch Jack Knife Sofa (DP)
- Single Barrel Chair (PS) (5272, 5316)
- Inside Handrail
- Dinette Booth Bed (PS) (5291)
- Decorative Sofa Pillows (1 Pair per Sofa)

Appliances

- OTR Convection Microwave w/3 Burner top
- 6 Gal Electronic Ignition Water Heater w/By-Pass Valve
- Sm. 2-Way Double Door Refer
- LP Gas Tank & Leak Detector
- Fire Extinguisher
- Carbon Monoxide Detector

Power

- Auxiliary Battery
- Converter w/ Charger & Auto Change Over Kit
- Generator Prep
- Battery Disconnect
- 30' Power Cord
- 4.0 Generator

Touring Package

- Fiberglass Running Boards
- Fiberglass Roof
- Hardwood Stiles
- Electric Step
- H-Dual Duct System
- Deluxe Laminex Step
- Electric Main Awning

Popular Options

XL Package

- Wood Dash
- Fluorescent Lighting
- G-Sound w/DVD
- Vinyl Ceiling

Driver Convenience Package

- Backup Monitor
- Backup Alarm
- Keyless Entry System

- 4.0 Onan Generator (Enclosed)
- Heated Holding Tanks
- Rear Ladder
- 5000 LB Hitch w/Plug
- Exterior Painted Skirt Area
- Full Paint w/Super Slick Exterior (Tan, Silver, Luxury Paint)
- Heated & Remote Mirrors
- Weather Pro Electric Awning Upgrade
- 19" LCD Color TV in Bedroom
- 26" Front LCD Color TV w/Remote
- DVD Player (N/A w/XL Pkg)
- Emergency Start Switch
- (7) Fluorescent Ceiling Lights (N/A w/XL Pkg)
- DSS Prep
- 6-Way Power Soft Touch D/P Seats
- IPO 2-Way Cloth Seats
- Comfort Plus Booth w/Dream Dinette IPO Sofa
- Upgrade Comfort Plus Queen Mattress
- Range Cover (N/A w/XL Pkg)
- Outside Shower
- Black Flush Tank
- Upgraded Wood Dash (N/A w/XL Pkg)