

ULTRA *Supreme*

2004 MOTORHOMES



GAS MODEL CLASS A



Comfortable Travel with Friends and Family

ULTRA *Supreme*

Exclusive Features



- 27" TV built into generous overhead storage
- Steel cage constructed overhead for added protection and durability
- Optional 7" back-up monitor
- TV Antenna w/ Amp and Boost (2 Jacks)
- AM/FM CD Stereo w/ 4 Speakers

7' interior ceiling height

Residential hardwood trim and door jambs



Corian™ edged counter tops throughout



• Soft Touch Ceiling



Dual metal H-ducted air conditioning system with foil bubble wrapped insulation for improved climate control



Family friendly sleeping arrangements in every floorplan with a full size Deluxe Hide-A-Bed Sofa that sets up in seconds and leaves plenty of floor space to get around the coach.

Corner Entertainment center (8376)





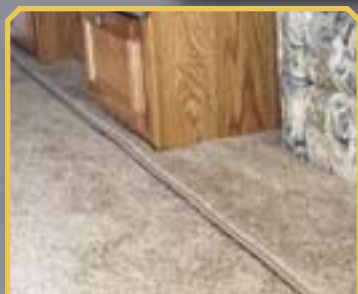
Functional kitchen area with residential style cabinets featuring more storage space for the long trip. Hand crafted hardwood doors and stiles with residential hardware, microwave oven, 3-burner range with lighted hood, 2-door 2-way refrigerator and decorative wall borders.



Residential constructed drawers with dual metal drawer slides



Seamless Armstrong™ Midstar flooring in the kitchen, bath and hallway



The Ultra Supreme utilizes flush floor slide-room technology providing extra headroom and no step-up making a very comfortable dinette and sitting area.



Dinette shown in platinum.

ULTRA *Supreme*

Unique Floorplans



8359 Bedroom Seating



The 8353 Ultra Supreme features a master suite complete with his and her wardrobes on either side of a Queen size bed, double sinks with vanity storage and a one-piece deluxe tub with glass surround. Two-Zone Living™, not just a bedroom, the master suite has a sitting chair, desk area and a place for a second TV. Two-Zone Living™ enables entertaining friends and family in the living zone while quietly relaxing in the second zone.

**Two-Zone
LIVING**
by Gulf Stream Coach



The 8353 Ultra Supreme is prepped for installation of a washer/dryer,





Exterior Features



Convenient rear center fill gas tank.

Aluminum skinned bus style doors with heavy-duty slam latches and thick rubber seals.

Galvanized steel storage compartments.



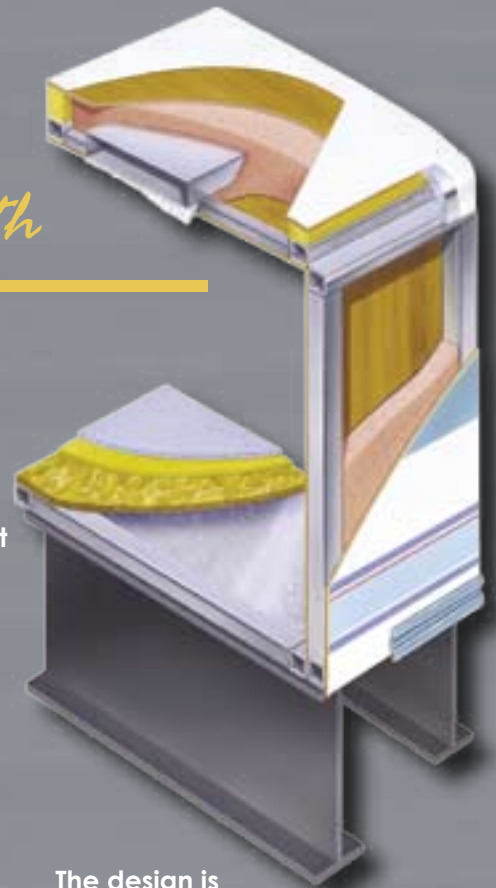
Cradle of Strength

It all begins with a good foundation... that keeps getting better after 20 years of producing quality motorhomes.

Ultra Supreme I beams are rated to 6,000 lbs. per I beam designed to dissipate the tremendous forces that are transferred to the coach from the chassis, much like a bridge truss dissipates extreme and concentrated loads that it encounters. This foundation supports abundant basement storage and adds rigidity to the rest of the coach. No other manufacturer offers this exclusive design.

Exterior construction features

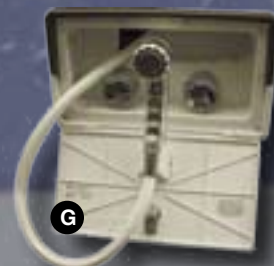
- Vacuum-bond laminated sidewalls
- High density block foam insulation
- Enclosed and heated holding tanks
- Radius entry door
- Smooth fiberglass exterior
- Tinted windows
- Automotive style caps front and rear
- Seamless fiberglass roof
- Painted skirt
- All paint exterior graphics
- Full chassis rail extension
- Hydraulic Leveling System



The design is set up to transfer weight to the center rails.

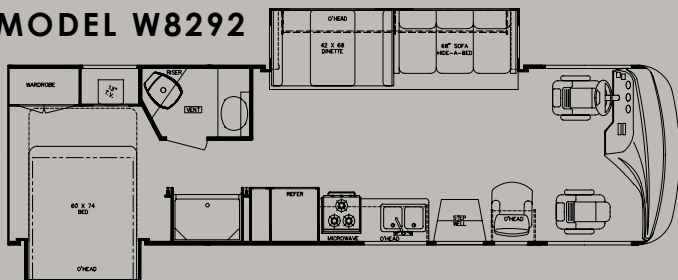
ULTRA Supreme

Ultra Koala



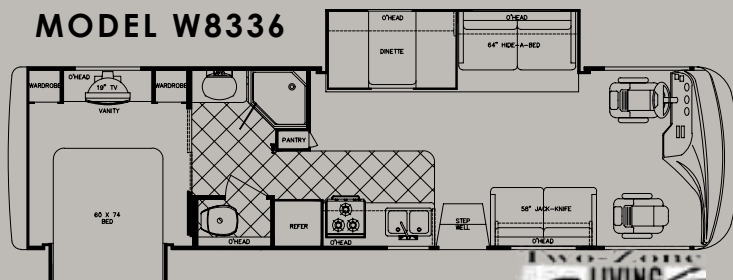
Available on all Ultra Supreme floorplans

MODEL W8292



Chassis	Ford V-10	Black	50 gal
Fuel	75 gal	Grey	50 gal
GVWR	18,000	Fresh	50 gal
Length	30'-8"	LP Gas Tank	85 lbs.
Height	11'-10"	Furnace	40,000 BTUs
Width	100"	Ducted A/C	13,500 BTUs
Wheelbase	208"	Water Heater	6 gal

MODEL W8336



Chassis	Ford V-10	Black	50 gal
Fuel	75 gal	Grey	50 gal
GVWR	20,500	Fresh	55 gal
Length	33'-4"	LP Gas Tank	85 lbs.
Height	11'-10"	Furnace	40,000 BTUs
Width	100"	Ducted A/C	13,500 BTUs
Wheelbase	208"	Water Heater	6 gal



The Koala Package.

Upgrade Your Ultra Supreme with this value packed option.

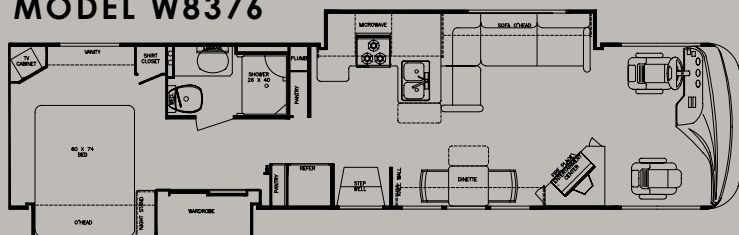
- Thermal Pane Windows (A)
- Corian™ Countertops in Kitchen (B)
- Fantastic Fans™ w/ Rain Sensor (C)
- Solar Charger (D)
- Satellite Dish w/o Receiver (E)
- Water Filter (F)
- Outside Rinse & Wash System (G)
- Hella™ Fog Lights (H)
- Upgrade Paint & Graphics (I)
- Fluorescent Lights (J)

- Popular Options -

- Bedroom 11,000 BTU Ducted A/C w/ Selector Switch
- 7" Back Up Monitor
- Computer Work Station (8359)
- Onan™ or Generac™ Generator
- 50 Amp Service
- Drivers Door
- DVD
- Wheel Liners
- Spare Tire (8336)
- Rear Ladder
- Washer/Dryer Combo (8353)

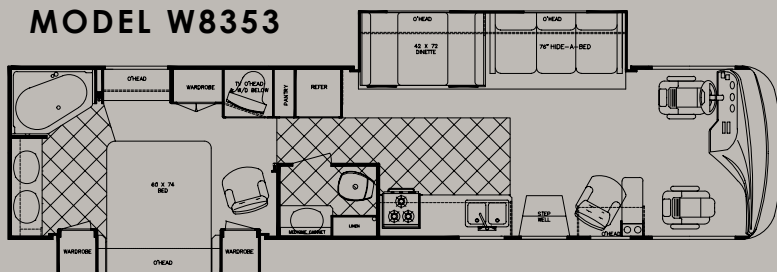


MODEL W8376



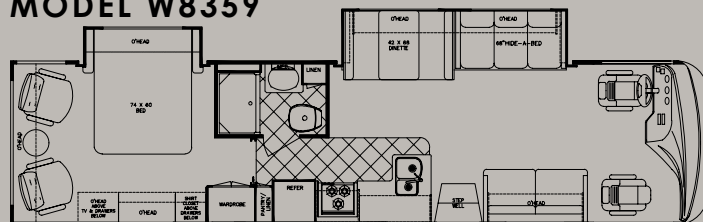
Chassis	Ford V-10	Black	50 gal
Fuel	75 gal	Grey	50 gal
GVWR	22,000	Fresh	55 gal
Length	36'-8"	LP Gas Tank	85 lbs.
Height	11'-10"	Furnace	40,000 BTUs
Width	100"	Ducted A/C	13,500 BTUs
Wheelbase	242"	Water Heater	6 gal

MODEL W8353



Chassis	Ford V-10	Black	50 gal
Fuel	75 gal	Grey	50 gal
GVWR	22,000	Fresh	55 gal
Length	36'-8"	LP Gas Tank	85 lbs.
Height	11'-10"	Furnace	40,000 BTUs
Width	100"	Ducted A/C	13,500 BTUs
Wheelbase	242"	Water Heater	10 gal

MODEL W8359



Chassis	Ford V-10	Black	50 gal
Fuel	75 gal	Grey	50 gal
GVWR	22,000	Fresh	55 gal
Length	35'-8"	LP Gas Tank	85 lbs.
Height	11'-10"	Furnace	40,000 BTUs
Width	100"	Ducted A/C	13,500 BTUs
Wheelbase	242"	Water Heater	6 gal

