

2005

# ATRIUM

*Special Edition*



*A room with a view, wherever you go*





# ATRIUM *Special Edition*



**KITCHEN • MODEL 8410**

## ERGONOMIC...

The Bathroom and Kitchen of the Atrium Special Edition are designed with practicality as well as aesthetics in mind. The bathroom features residential shower door and porcelain stool while the kitchen boasts abundant storage and workspace.



**BATHROOM • MODEL 8411**



**SUN ROOM • MODEL 8411, 8410**

Patent Pending



**LIVING AREA • MODEL 8411**

## SPACIOUS LIVING...

Gulf Stream's exclusive sun room slideout, which is getting rave reviews from many RVers, is available on both the 8410 and 8411 floorplans. This first in the industry innovative sun room gives you a wide range of sight from the curb side of the coach and opens up the coach to eliminate that boxed in feeling that other motorhomes give you. Also Gulf Stream makes you feel at home by introducing other residential features like hardwood cabinetry, residential hardware, deluxe carpet, flatscreen television with Gulf Stream's own 5.1 G-sound, residential lighting fixtures, large refrigerator w/ optional icemaker, radius shower, and free standing dinette and recliner.







# ATRIUM *Special Edition*



*BEDROOM • UNIVERSAL*

## LUXURIOUS...

The entry of the bedroom/bathroom is adorned by elegantly designed french doors. Made with Amish craftsmanship out of 100% hardwood we assure you these doors along with the hardwood interior appointments will maintain their luster for years.



*BEDROOM • MODEL 8411*



*BEDROOM • MODEL 8410*



## SPACIOUS BEDROOM...

The bedrooms on the Atrium Special Edition features Gulf Stream's Two-Zone Living Concept. By Adding a sitting area in the bedroom we have increased the amount of useful daytime living area by 30%. With this arrangement you have the ability to close off the bedroom area from the rest of the coach to give you privacy and the peace and quiet you deserve. This feature packed bedroom also gives you washer/dryer hookups for the optional washer/dryer appliance in the 8410, a computer desk/vanity in the 8411 and 8408, and as with all Atrium Models a 20" Flat screen television and more wardrobe storage than you would imagine.







# Atrium SE Exclusive Features & Benefits

**SOLID  
HARDWOOD  
CABINETRY**



**PREDRILLED  
HARDWOOD  
CONSTRUCTION**

Our residential style cabinets are constructed of solid hardwood doors and fronts that are predrilled and screwed then they are stained and top coated with a furniture grade finish that provides long lasting beauty and durability as well as adding strength and quietness to your motorhome.

**COMPETITOR'S CABINETRY**

Other companies use wrapped cabinet fronts prone to peeling, fading and tearing. The softer composite wood used does not hold screws as well as hardwood resulting in loss of strength and squeaking. Discoloration will degrade the beauty and lower the value of the motorhome.

**GALVANIZED  
STEEL  
STORAGE  
COMPARTMENTS**



Seamless, carpeted, galvanized steel storage compartments safely cradle your valuables. Rust protective paint and foam sealed for extended life and a quiet ride.



Dual metal H-Ducted air conditioning system with foil bubble wrapped insulation for superior climate control.

**Excellent Weathering** - Maintaining the vehicle's quality appearance enhances its resale value.

**Seamless  
FIBERGLASS ROOF**

**Tear Resistance** - Flexroofs hard abuse resistant finish resists tearing, a condition that can cause leaks and lead to expensive repair.

**Low Maintenance** - Road grime can easily be removed with normal cleaning maintenance. Rubber chalking due to solar breakdown of the roof surface is eliminated, preserving the original appearance and resale value of the vehicle.

**Stain Resistance** - Fiberglass Flexroof is designed to resist staining and maintain its quality appearance.

**Structural Integrity** - Unlike conventional EPDM rubber roof membranes, Flexroof is a structural component of the roof system.

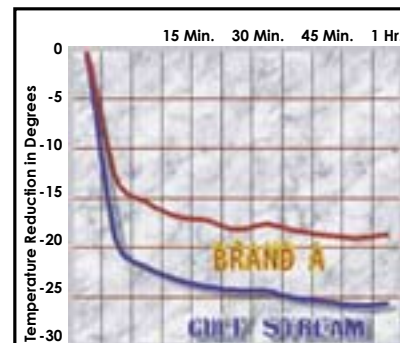
**Textured Fiberglass** - Helps dissipate heat and prevents tree limbs from tearing or scratching your roof.



Comfort Plus furniture by Gulf Stream Coach features residential styling, solid construction, total comfort and a comprehensive warranty.

**FLUSH FLOOR**  
Slide out rooms

Gulf Stream offers true flush floor slide out rooms to give you more headroom in the slide and eliminates the step up into the slide room that you will experience in many of our competitors motorhomes.



## GULF STREAM VS. BRAND A Cool Down Comparison

- At 15 minutes, Gulf Stream cooled 7 degrees cooler.
- At 30 minutes, Gulf Stream cooled 9 degrees cooler.
- At 1 hour, Gulf Stream cooled 9 degrees cooler.

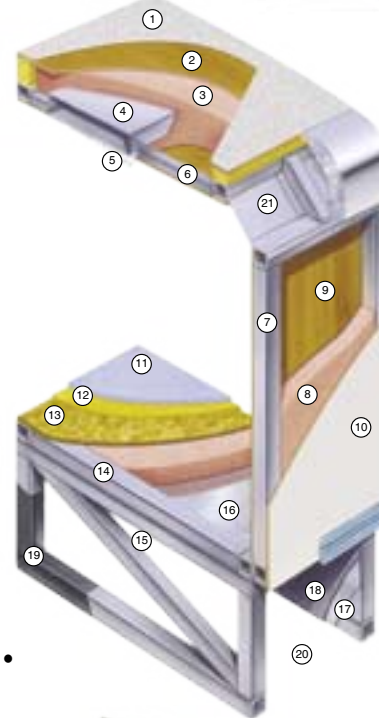
Finally, empirical data demonstrating the efficiency and performance of a roof air conditioning system versus a floor air conditioning system.  
Winner: Roof air conditioning by Gulf Stream

# Cradle of Strength



Unlike traditional plywood and foam seating Comfort Plus dinette seating features the strength of steel and the comfort of a sprung cushion.

1. Seamless Fiberglass Roof For Greater Energy Efficiency and Dependability.
2. Luan Decking for Additional Strength.
3. Molded, High Density EPS (Expanded Polystyrene) Roof Brick Insulation - Provides Consistent Insulation Value as well as Superior Dimensional Rigidity.
4. One-Piece Formed Aluminum Air Conditioning Duct, Completely Surrounded By EPS Insulation.
5. Bubble-Wrapped Foil Insulation Provides Superior Insulation and Helps Prevent Condensation.
6. Rugged Welded Tubular Aluminum Roof Framing.
7. Rugged Heavy-Gauge Tubular Aluminum, Fixture Welded to Form the Sidewall Framing.
8. High-Density EPS Insulation Provides Superior Lamination and Bonding Characteristics and Insures Greater Energy Efficiency.
9. Interior Wall Panels Securely Laminated to Sidewall Framing.
10. "Super Slick" Fiberglass Exterior Vacuum-bond Laminated to Sidewall Framing for Lasting Beauty and Durability.
11. High-Quality Stain-Resistant Carpeting Available in Designer Coordinated Colors.
12. Extra-Thick Padding Under Carpet Provides Extra Comfort and Increases Carpet Durability.
13. Seamless Structurewood Floor Decking Laminated to Steel Floor Structure Assures a Quiet, Long-Lasting Rigid Floor.
14. Heavy-Gauge Tubular Steel Framing, Fixture Welded for Extra Strength and Stability.
15. Heavy-gauge Tubular Steel Framed, Fixture Welded Floor Truss System Provides the Strongest Foundation in the Industry.
16. Seamless Layer of Galvanized Steel Securely Laminated to the Steel Floor Framing.
17. Galvanized Steel Used to Form Each Storage & Holding Compartment.
18. Durable All-Weather Carpeting Completes Each Accessible Storage Compartment, Providing Extra Protection for Luggage and Valuables.
19. Rust-Prohibitive Paint Coating Applied to All Steel Framing Assures Corrosion and Rust Protection.
20. The Industry's Strongest, Most Spacious Exterior Storage Compartments.
21. Reinforced Heavy-Gauge Steel "W" Transition.



TAN



GREEN



BLUE



MOCHA



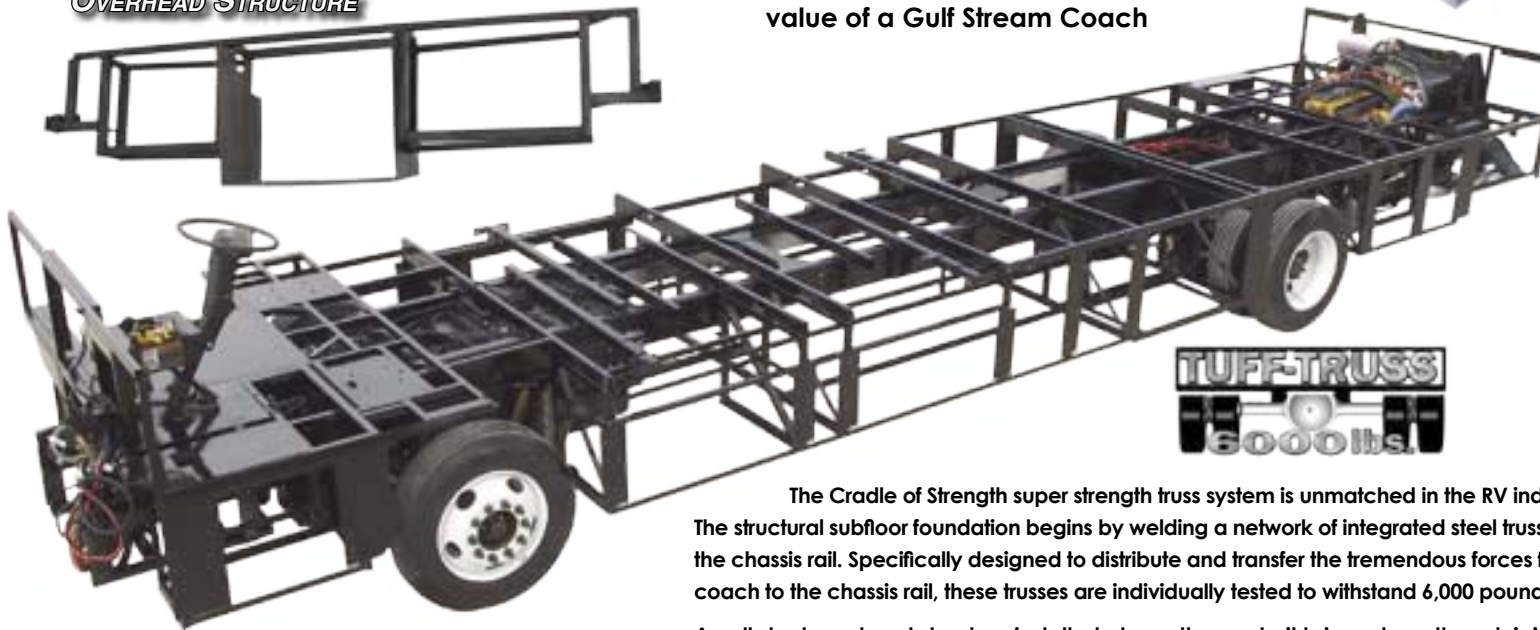
SAND

BROWN

Sand Carpet Available with Tan or Green. Brown Carpet Available with Blue or Mocha.

**TAKE THE TIME TO COMPARE...**  
and you will see the exceptional value of a Gulf Stream Coach

**ALL STEEL  
OVERHEAD STRUCTURE**



The Cradle of Strength super strength truss system is unmatched in the RV industry. The structural subfloor foundation begins by welding a network of integrated steel trusses to the chassis rail. Specifically designed to distribute and transfer the tremendous forces from the coach to the chassis rail, these trusses are individually tested to withstand 6,000 pounds each.

An all steel overhead structure installed above the cockpit brings strength and rigidity to the upper portion of the coach providing a safe strong platform to install a TV that will not break free in an impact while maximizing overhead storage.

**NICKEL PLATE HARDWARE**





# ATRIUM *Special Edition*

## *Exterior Features...*

### **CONTEMPORARY LOOKS...**

Full body paint and three color options each protects the exterior and offers a cutting edge look with classic simplicity. Gulf Stream delivers the options you want to protect your investment, suit your budget and visual preference.

### **EXTERIOR STORAGE...**

The practice of Raised Rail Construction delivers more Ceiling height while increasing the amount of underbody storage space. Gulf Stream Coach uses One piece steel boxes in our underbody storage compartments which are then carpeted on the inside to protect your belongings while traveling down the road and coated with anti-corrosion paint on the underside to prevent deterioration. Slam latch doors on each storage compartment with lights in each and electrical outlets in two will provide all the conveniences you need to load and unload safely with ease.



***BLUE EXTERIOR GRAPHICS***



***GREEN EXTERIOR GRAPHICS***



***MAROON EXTERIOR GRAPHICS***



***SPACIOUS BASEMENT STORAGE***



# Rain or Shine

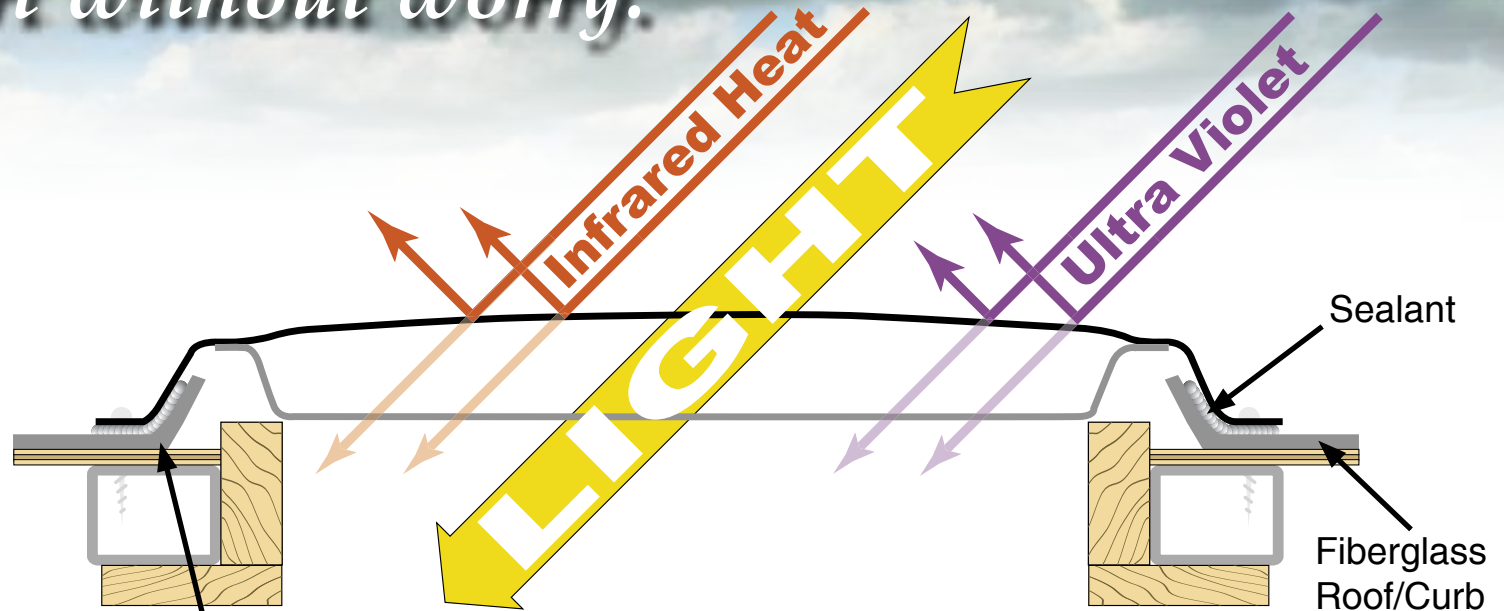
Comfort without worry.



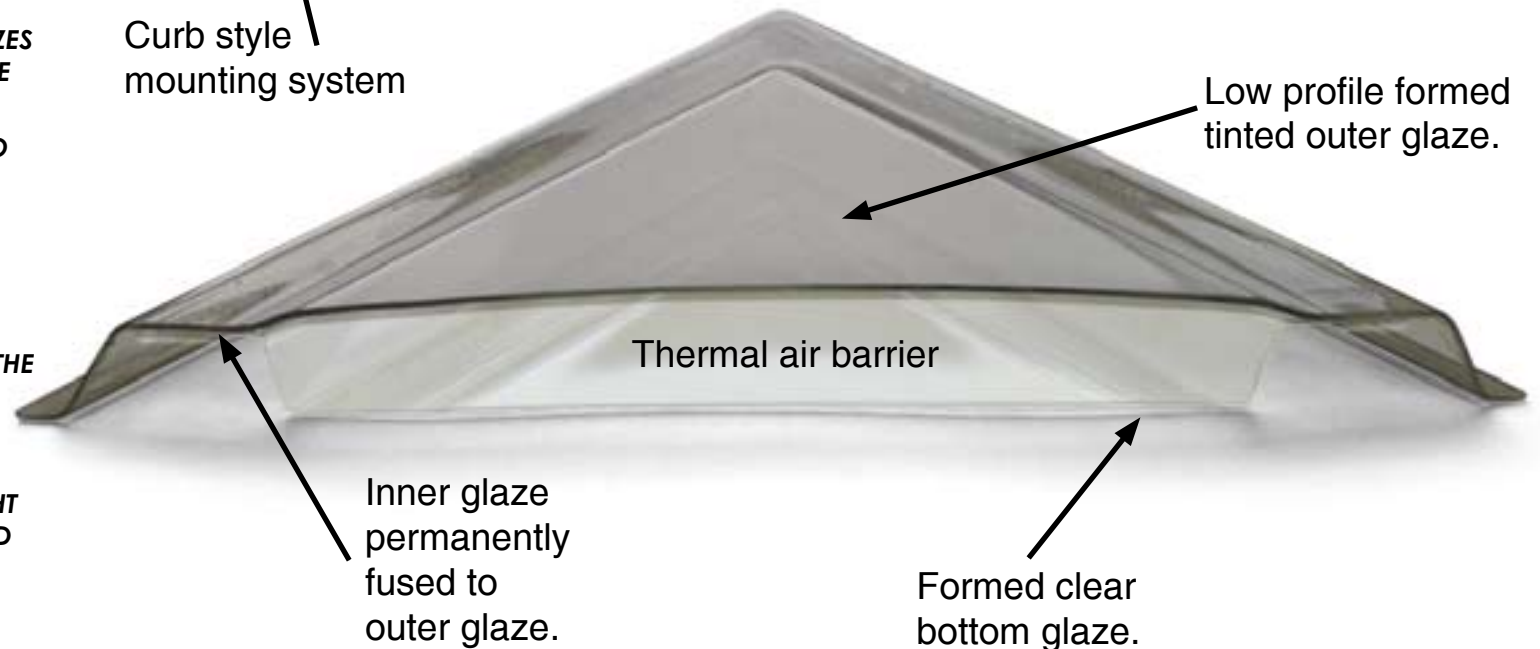
## INNOVATIVE SUN ROOM DESIGN... Patent Pending

Open panoramic views, natural lighting and spacious freestanding dinette are just a few of the benefits of the Gulf Stream sun room. More important, is the peace of mind knowing the sun room's skylights are designed to protect the interior from damaging UV light, prevent leaks and aid in climate control.

- **DESIGNED BY GULF STREAM EXCLUSIVELY FOR SLIDEOUT ROOMS.**
- **CURB STYLE INSTALLATION ELIMINATES LEAKS.**
- **BOTH TOP AND BOTTOM GLAZES ARE FORMED OF UNBREAKABLE POLYCARBONATE.**
- **THE OUTER GLAZE IS TINTED TO MINIMIZE SOLAR HEAT GAIN. THE BOTTOM GLAZE IS CLEAR.**
- **COLLECTIVELY, BOTH GLAZES ELIMINATE 97% OF THE DAMAGING UV LIGHT.**
- **ALL WALLS AND CEILING OF THE SUNROOM ARE INSULATED FOR THERMAL AND SOUND CONTROL.**
- **EVERY WINDOW AND SKYLIGHT IN THE SUN ROOM IS EQUIPPED WITH A DAY/NIGHT SHADE**



Curb style  
mounting system



Low profile formed  
tinted outer glaze.

Thermal air barrier

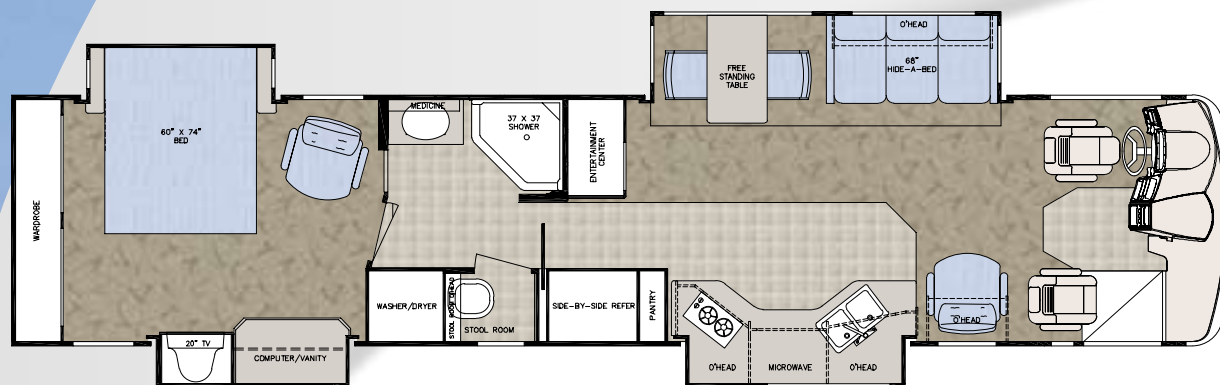
Inner glaze  
permanently  
fused to  
outer glaze.

Formed clear  
bottom glaze.



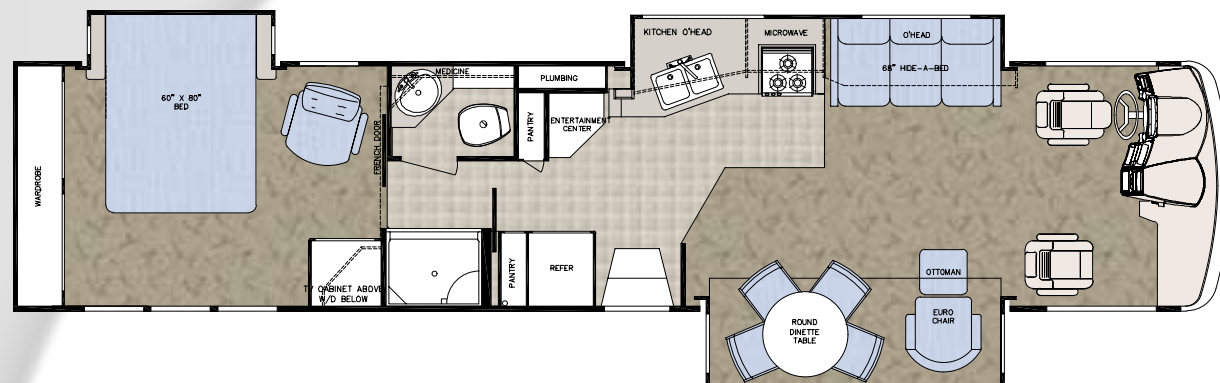
# ATRIUM *Special Edition*

MODEL 8408



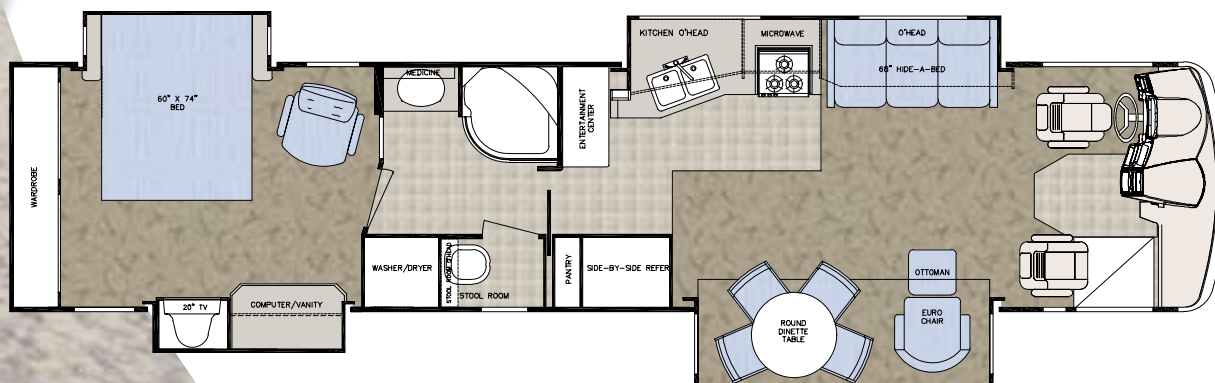
Chassis	Freightliner
Engine	350 Cat
Fuel	150
GVWR	32,000
Length	41'-4"
Width	100"
Height w/AC	12'-3"
Interior Height	84"
Wheelbase	276"
Fresh	75 gal.
Grey	40 gal.
Black	40 gal.
LP Gas Tank	115 lbs.
Furnace (BTU's)	40,000/25,000
Water Heater w/DSI	10 gal.

MODEL 8410



Chassis	Freightliner
Engine	350 Cat
Fuel	100
GVWR	29,410
Length	41'-4"
Width	100"
Height w/AC	12'-3"
Interior Height	84"
Wheelbase	276"
Fresh	75 gal.
Grey	40 gal.
Black	40 gal.
LP Gas Tank	115 lbs.
Furnace (BTU's)	40,000/25,000
Water Heater w/DSI	10 gal.

MODEL 8411



Chassis	Freightliner
Engine	350 Cat
Fuel	150
GVWR	32,000
Length	41'-4"
Width	100"
Height w/AC	12'-3"
Interior Height	84"
Wheelbase	276"
Fresh	75 gal.
Grey	40 gal.
Black	40 gal.
LP Gas Tank	115 lbs.
Furnace (BTU's)	40,000/25,000
Water Heater w/DSI	10 gal.





## Interior & Decor

- Deluxe Carpet
- Residential Linoleum
- Privacy Curtain
- Decorator Mirror
- Valences, Lambrequins & Shades on Windows
- Vinyl Ceiling Liner
- Oak Hardwood Interior
- Interior Handrail
- Flush Floor Slides
- Overhead Entertainment Center w/ 24" Flat Screen Television
- Molded Kitchen Countertops
- Decorative Beveled Mirror Doors Above Sofa
- Decorative Crown Ceiling Molding
- Silverware Drawer

## Furniture

- Queen Bed w/ Lifts, Innerspring Mattress, Bedspread and Pillow
- Free Standing Dinette w/ 2 Chairs
- Soft Touch Recliner (8408)
- Soft Touch Euro Recliner w/ Ottomon (8410,8411)
- Cloth HAB Sofa
- Bedroom Chair
- Vanity Bench

## Bath & Water

- Power Vent in Bathroom
- Porcelain Pedal Stool w/ Sprayer
- Shower w/ Glass Door(8408,8410)
- Radius Tub/Shower w/ Radius Glass Door (8411)
- City Water Hookup
- Skydome in Bath
- Deep Dual Basin Kitchen Sink
- Holding Tank Flush Kit
- Outside Rinse and Wash Station
- 10 Gal DSI Water Heater
- Water Purifier
- Water Manifold System

## Appliances

- 2 Burner Range Top (8408)
- 3 Burner Range Top (8410, 8411)
- LG Double Door Refrigerator
- 30" Convection Oven/Microwave w/ Power Range Hood
- LP Leak Detector
- Carbon Monoxide Detector
- 115 lb. LP Tank
- 15,000 BTU Low Profile A/C w/ Ducted Roof Air (Front)
- 15,000 BTU Low Profile A/C w/ Ducted Roof Air (Bedroom)
- 40,000 BTU Furnace (Front)
- 25,000 BTU Furnace (Rear)

## Electrical Systems

- 4 6V Batteries (coach 12V power)
- 2 12V Batteries (chassis 12V power)
- Emergency Start Switch
- Battery Disconnect
- 2000 watt Inverter
- 50 amp service w/ Cord & Automatic 110 Changeover
- Monitor Panel
- Generator Ready
- TV Antenna w/ Amp & Boost
- Cable TV Ready
- 5.1 Surround Sound System w/ DVD and VCR player Combo
- Back-up Monitor
- 24" Flat Screen Television (Front)
- 20" Flat Screen Television (Bedroom)
- DSS Prep
- Porch light
- CB Antenna
- Remote Control Spotlight
- Deluxe Air Horns
- Washer/Dryer Prep.

## Exterior Construction

- Full Paint Exterior w/ Painted Graphics
- Superslick Fiberglass Exterior
- Laminated Fiberglass Roof
- Welded Aluminum Cage Construction
- Hydraulic Leveling Jacks

- Laminated Floor w/ Metal Underbelly
- Foam Seal & Undercoating
- Radius Tinted Windows
- Stainless Steel Wheel Covers
- Outside Lighted Grab Handle
- Rear Mud Flaps
- Lighted Trunk Boxes
- One Piece Aluminum Skin Slam Latch Basement Doors
- Fully Insulated Engine Doghouse
- Slideout Toppers
- Deluxe Awning
- Dead Bolt Lock Entry Door
- Fiberglass Caps
- Electric Step
- Hitch

## Chassis

- 29,410 GVWR Freightliner Custom Diesel Chassis w/ Steel Rims (8410)
- 32,000 GVWR Freightliner Custom Diesel Chassis w/ Alcoa Rims
- 350hp Catipillar Diesel Engine
- Allison Transmission
- Full Air Suspension
- Full Air Brakes
- CD Player - AM/FM Stereo w/ 4 speakers
- Dash A/C
- Cruise Control
- Heated and Remote Sideview Mirrors
- Three Point seatbelts
- Two-Tone Pilot/Co-Pilot Seats
- Map Lights

## Popular Options

- ☐ Maple Hardwood Interior
- ☐ Stainless Steel Fixtures and Hardware
- ☐ 7.5 Onan Quiet Diesel Generator
- ☐ 7.0 Generac Quiet Diesel Generator
- ☐ Power Sun Visors
- ☐ Thermopane Windows
- ☐ Entry Door Awning (NA 8410)
- ☐ Automatic Hydraulic Jack Leveling System
- ☐ In-dash Computer Workstation w/ 12v and 11v outlets (8410 only)
- ☐ Radius Tub/Shower w/ Radius Glass Door (8408 only)
- ☐ 3-speed Fantastic Attic Vent
- ☐ 10 Disc CD Changer
- ☐ 6-way Power Cockpit Seats
- ☐ Euro Recliners I.P.O. Standard Cloth
- ☐ Soft touch Sofa I.P.O. Cloth Sofa
- ☐ Combo Washer/Dryer
- ☐ 2-Way/4 Door Norcold Refrigerator w/

**Coach-Net®**  
24 HR. EMERGENCY ROADSIDE ASSISTANCE

- One Year Coach-Net Membership
- Towing and Winching
- Flat Tire Change
- Mobile Mechanic
- Delivery of emergency Fluids
- Jump-Start / Battery Boost
- Lockout



Rally and caravan participants spend time touring attractions, enjoying fabulous meals, taking in area highlights and shows, while having plenty of free time to relax or explore on their own. Our pre-scouted events include knowledgeable staff to assure you of the finest routes, the tastiest restaurants and the friendliest atmosphere to help make the most out of your RV experience. Special rallies throughout the year also include Gulf Stream supplier seminars, complimentary minor repairs by Gulf Stream technicians, Gulf Stream dealer product displays and round table discussions to voice your product improvement ideas.

The Gulf Streamers RV Club is a valuable benefit to all Gulf Stream owners. Members enjoy staying active and participating in the various rallies and caravans offered throughout the United States and Canada. Others simply enjoy the value of receiving their Main Stream, the club's 44-page newsletter, with all its up-to-date product information, service tips and company highlights. Whether or not group camping is a part of your RV use, everyone can benefit from the Emergency Road Service and Gulf Streamers Insurance options. Both are available at competitive rates with friendly, reliable service. Another great benefit is the 10% Program, where campgrounds throughout the U.S. and Canada provide Gulf Streamers with a 10 percent discount on camping. As a member, you'll also receive discounts on National Theme Parks and special attractions, including RV and travel guides, directories and magazines.





### **GULF STREAM FACILITIES...**

Located in the heart of the Amish country, the complex, along with Gulf Stream's affiliate, Fairmont Homes, Inc., covers over 400 acres and includes more than 1.5 million square feet of state-of-the-art manufacturing facilities. With over 20 years of manufacturing experience producing quality Recreational Vehicles, Gulf Stream is the leading manufacturer of high quality and high value RV products that are distributed through a partnership relation with independent dealers who are focused on meeting customer expectations.



## *Quality, Comfort, Innovation*

Your family and friends will feel safe and comfortable wrapped in Gulf Stream's "Cradle of Strength". Comfort, Quietness and Insulation from the elements is what you will experience from Gulf Stream's "Tried and Tested" Motorhomes. Compare... and you will find the exceptional value of a Gulf Stream Motorhome.

### **GULF STREAM EXCEPTIONAL VALUE...**

POST OFFICE BOX 1005

• YOUR GULF STREAM COACH DEALER •

NAPPANEE, IN 46550



**VISIT**

**WWW.GULFSTREAMRV.COM**

**FOR MORE DETAILED INFORMATION...  
OR CALL 1-800-765-8787-EXT. 3288**

For more information and available options, contact your local Gulf Stream dealer, [www.gulfstreamRV.com](http://www.gulfstreamRV.com) or Gulf Stream Coach, Inc. Gulf Stream Coach, Inc., reserves the right to make changes in prices, colors, materials, components and specifications and to discontinue models at any time without notice or obligation. Gulf Stream Coach, Inc., assumes no responsibility for any error in type or print reproduction of specifications or floorplans in this brochure. Photographs may show equipment or items that are optional and are not included in the purchase price of the coach. Test drive and review a current model at your nearest Gulf Stream dealer. © 2002 Gulf Stream Coach, Inc., Nappanee, Indiana U.S.A.

7/04-SP-10k