

2007



CLASS A GAS
MOTORHOMES

DEDICATED TO QUALITY,
INNOVATION AND
VALUE.

GULF STREAM



COACH, INCORPORATED
FAMILY VALUE

Summit Sport
BY GULF STREAM



Sun Sport

By GULF STREAM



Optional side by side refrigerator pictured

KITCHEN • MODEL 8388

Meal preparation is a pleasure in the Sun Sport with plenty of large hardwood cabinets and drawers, generous counter space, 3-burner stove, 2-door 2-way refrigerator and convection microwave.



GALLEY & DINING ROOM • MODEL 8389



MODEL 8295

**OPTIONAL ELECTRONICS PACKAGE
30" LCD**



LOW-PROFILE SATELLITE



GPS / MP3 SYSTEM

SPACIOUS LIVING...

Gulf Stream's exclusive sun room slideout, which is getting rave reviews from many RVers, is available on various floorplans ranging in length from 30 to 38 feet. First in the industry this innovative sun room gives you a wide range of sight from the curb side of the coach and opens up the coach to eliminate that boxed-in feeling that other motorhomes give you. Gulf Stream makes you feel at home by introducing other residential features like hardwood cabinetry, residential hardware, deluxe carpet, a flatscreen television or optional LCD with Gulf Stream's own G-sound, residential lighting fixtures, large refrigerator with optional icemaker, and free standing dinette and recliner.



LIVING ROOM • MODEL 8389

THREE-ZONE LIVING... Gulf Stream is bustling with enthusiasm as we usher in a new age of RV comfort. Our innovative Three-Zone living concept is revolutionary. This floor plan offers the opportunity to relax in privacy or entertain a large social gathering. The opposing 19 ft. slide outs open the coach to enormous proportions. Creating three individual zones, family/living room, a separate dining room/galley and private sleeping quarters with a King bed and an attached pass through bathroom accessible from the bedroom or dining room.

GULF STREAM

 COACH, INCORPORATED
 FAMILY VALUE



PASS-THROUGH BATHROOM • MODEL 8389

BATHROOM...

Sun Sport bathrooms have hardwood cabinets and durable laminate countertops providing all the storage and work-space needed to prepare for the day. The one piece shower features a skylight for maximum headroom and natural lighting.



*KING SIZE BED WITH POWER HEADREST
AVAILABLE IN MODEL 8389*



BEDROOM • MODEL 8378

SPACIOUS BEDROOMS...

The bedrooms in select Sun Sport models feature Gulf Stream's Two-Zone Living Concept. By Adding a sitting area in the bedroom we have increased the amount of useful daytime living area by 30%. With this arrangement you have the ability to close off the bedroom area from the rest of the coach to give you privacy and the peace and quiet you deserve.

Many bedrooms also offer washer/dryer hookups for the optional washer/dryer appliance, an optional computer desk/vanity, flat screen television and more wardrobe storage than you would imagine.



Two-Zone Living • Model 8388

PRACTICAL USE OF SPACE...

This bedrooms feature Gulf Stream's Two-Zone Living Concept. The computer workstation and sitting chair give this bedroom functionality beyond sleeping. E-mail, paperwork, picking up a good book or watching TV can all be enjoyed in this second zone.

GULF STREAM

COACH, INCORPORATED
FAMILY VALUE

Sun Sport

By GULF STREAM

SOLID HARDWOOD CABINETRY



PREDRILLED HARDWOOD CONSTRUCTION

Our residential style cabinets are constructed of solid hardwood doors and fronts that are predrilled and screwed then they are stained and top coated with a furniture grade finish that provides long lasting beauty and durability as well as adding strength and quietness to your motorhome.

Other companies use wrapped cabinet fronts prone to peeling, fading and tearing. The softer composite wood used does not hold screws as well as hardwood resulting in loss of strength and squeaking. Discoloration will degrade the beauty and lower the value of the motorhome.

COMPETITOR'S CABINETRY

GALVANIZED STEEL STORAGE COMPARTMENTS

Seamless, carpeted, galvanized steel storage compartments safely cradle your valuables. Rust protective paint and foam sealed for extended life and a quiet ride.



Dual metal H-Ducted air conditioning system with foil bubble wrapped insulation for superior climate control.

Excellent Weathering - Maintaining the vehicle's quality appearance enhances its resale value.

Tear Resistance - Flexroofs hard abuse resistant finish resists tearing, a condition that can cause leaks and lead to expensive repair.

Low Maintenance - Road grime can easily be removed with normal cleaning maintenance. Rubber chalking due to solar breakdown of the roof surface is eliminated, preserving the original appearance and resale value of the vehicle.

Stain Resistance - Fiberglass Flexroof is designed to resist staining and maintain its quality appearance.

Structural Integrity - Unlike conventional EPDM rubber roof membranes, Flexroof is a structural component of the roof system.

Textured Fiberglass - Helps dissipate heat and prevents tree limbs from tearing or scratching your roof.

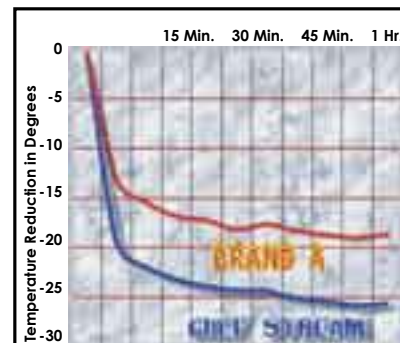
Seamless FIBERGLASS ROOF



Comfort Plus furniture by Gulf Stream Coach features residential styling, solid construction, total comfort and a comprehensive warranty.

FLUSH FLOOR Slide out rooms

Gulf Stream offers true flush floor slide out rooms to give you more headroom in the slide and eliminates the step up into the slide room that you will experience in many of our competitors motorhomes.



GULF STREAM VS. BRAND A Cool Down Comparison

- At 15 minutes, Gulf Stream cooled 7 degrees cooler.
- At 30 minutes, Gulf Stream cooled 9 degrees cooler.
- At 1 hour, Gulf Stream cooled 9 degrees cooler.

Finally, empirical data demonstrating the efficiency and performance of a roof air conditioning system versus a floor air conditioning system.

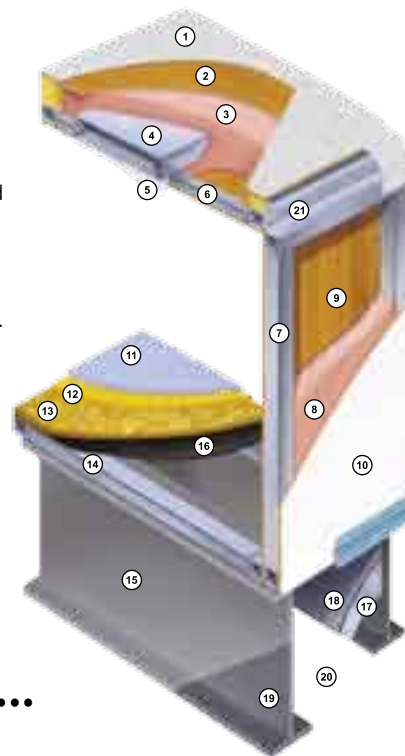
Winner: Roof air conditioning by Gulf Stream

Cradle of Strength



Unlike traditional plywood and foam seating Comfort Plus dinette seating features the strength of steel and the comfort of a sprung cushion.

1. Seamless Fiberglass Roof For Greater Energy Efficiency and Dependability.
2. Luan Decking for Additional Strength.
3. Molded, High Density EPS (Expanded Polystyrene) Roof Brick Insulation - Provides Consistent Insulation Value as well as Superior Dimensional Rigidity.
4. One-Piece Formed Aluminum Air Conditioning Duct, Completely Surrounded By EPS Insulation.
5. Bubble-Wrapped Foil Insulation Provides Superior Insulation and Helps Prevent Condensation.
6. Rugged Welded Tubular Aluminum Roof Framing.
7. Rugged Heavy-Gauge Tubular Aluminum, Fixture Welded to Form the Sidewall Framing.
8. High-Density EPS Insulation Provides Superior Lamination and Bonding Characteristics and Insures Greater Energy Efficiency.
9. Interior Wall Panels Securely Laminated to Sidewall Framing.
10. "Super Slick" Fiberglass Exterior Vacuum-bond Laminated to Sidewall Framing for Lasting Beauty and Durability.
11. High-Quality Stain-Resistant Carpeting Available in Designer Coordinated Colors.
12. Extra-Thick Padding Under Carpet Provides Extra Comfort and Increases Carpet Durability.
13. Seamless Structurewood Floor Decking Over Steel Floor Structure Assures a Quiet, Long-Lasting Rigid Floor.
14. Heavy-Gauge Tubular Steel Framing, Fixture Welded for Extra Strength and Stability.
15. Heavy-gauge Steel I-Beam Floor Truss System Provides the Strongest Foundation in the Industry.
16. Seamless Layer of Polypropylene Weather Coated Woven Fabric Securely Attached to the Floor Decking.
17. Galvanized Steel Used to Form Each Storage & Holding Compartment.
18. Durable All-Weather Carpeting Completes Each Accessible Storage Compartment, Providing Extra Protection for Luggage and Valuables.
19. Rust-Prohibitive Paint Coating Applied to All Steel Framing Assures Corrosion and Rust Protection.
20. The Industry's Strongest, Most Spacious Exterior Storage Compartments.
21. Heavy-Gauge Aluminum Radius Transition.



TAN

MOCHA

GOLD

SANTE FE

CARPET

TONY BERMUDA

TORCHLIGHT CARPET

NICKEL PLATE HARDWARE



GULF STREAM
COACH, INCORPORATED
FAMILY VALUE

TAKE THE TIME TO COMPARE...

and you will see the exceptional value of a Gulf Stream Coach.

ALL STEEL
OVERHEAD STRUCTURE



TUFF-TRUSS
6000lbs.

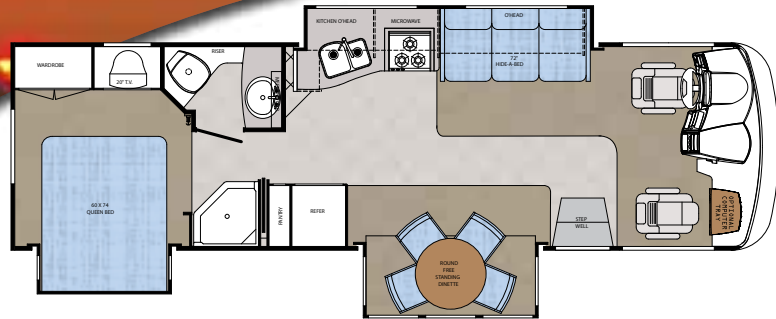
The Cradle of Strength super strength truss system is unmatched in the RV industry. The structural subfloor foundation begins by welding a network of integrated steel trusses to the chassis rail. Specifically designed to distribute and transfer the tremendous forces from the coach to the chassis rail, these trusses are individually tested to withstand 6,000 pounds each.

An all steel overhead structure installed above the cockpit brings strength and rigidity to the upper portion of the coach providing a safe strong platform to install a TV that will not break free in an impact while maximizing overhead storage.

Sun Sport

By GULF STREAM

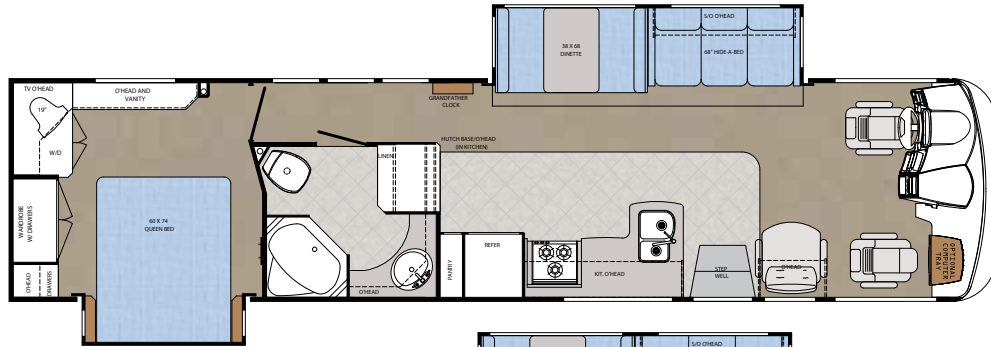
MODEL 8295



Chassis	Ford
Engine	6.8 V10
Fuel	75
GVWR	20,500
Length	30'-8"
Width	100"
Height w/AC	12'-0"
Interior Height	84"

Wheelbase	208"
Fresh	57 gal.
Grey	36 gal.
Black	36 gal.
LP Gas Tank	85 lbs.
Furnace (BTU's)	40,000
A/C Front Only (BTU's)	13,500
Water Heater w/DSI	10 gal.

MODEL 8351



Chassis	Ford
Engine	6.8L V-10
Fuel	75
GVWR	22,000
Length	36'-8"
Width	100"
Height w/AC	12'-0"
Interior Height	84"

Wheelbase	242"
Fresh	60 gal.
Grey	50 gal.
Black	50 gal.
LP Gas Tank	85 lbs.
Furnace (BTU's)	40,000
A/C Front/Rear (BTU's)	13,500 / 13,500
Water Heater w/DSI	10 gal.

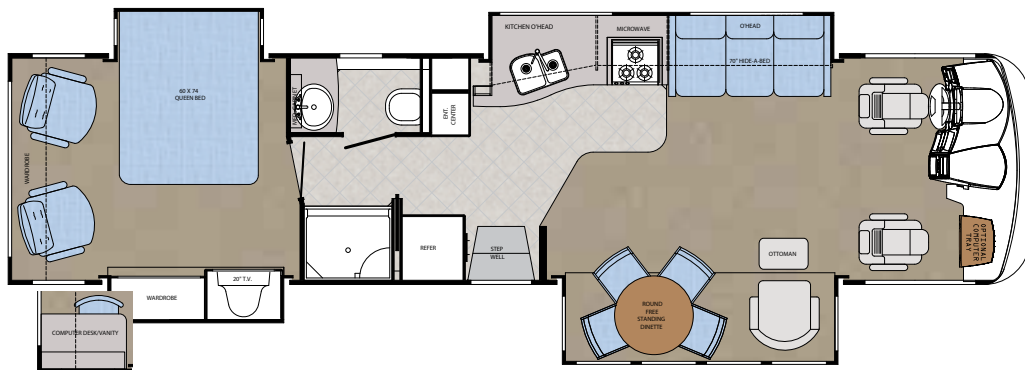
MODEL 8368



Chassis	Ford
Engine	6.8 V10
Fuel	75
GVWR	22,000
Length	36'-8"
Width	100"
Height w/AC	12'-0"
Interior Height	84"

Wheelbase	242"
Fresh	60 gal.
Grey	50 gal.
Black	50 gal.
LP Gas Tank	85 lbs.
Furnace (BTU's)	40,000
A/C Front/Rear (BTU's)	13,500 / 13,500
Water Heater w/DSI	10 gal.

MODEL 8377

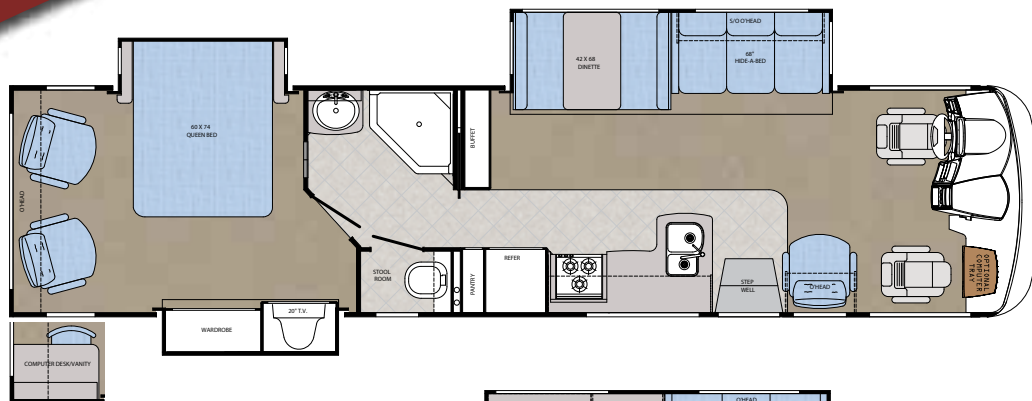


Chassis	Workhorse
Engine	8.1 V8
Fuel	75
GVWR	24,000
Length	36'-8"
Width	100"
Height w/AC	12'-0"
Interior Height	84"

Wheelbase	242"
Fresh	60 gal.
Grey	50 gal.
Black	44 gal.
LP Gas Tank	85 lbs.
Furnace (BTU's)	40,000
A/C Front/Rear (BTU's)	13,500 / 13,500
Water Heater w/DSI	10 gal.

Holding tank capacities (both fresh water and waste water) are volume calculations based on overall tank dimensions. The capacities may differ from published calculations due to the result of tank installation, tank material variation, tank fitting locations and other plumbing variables.

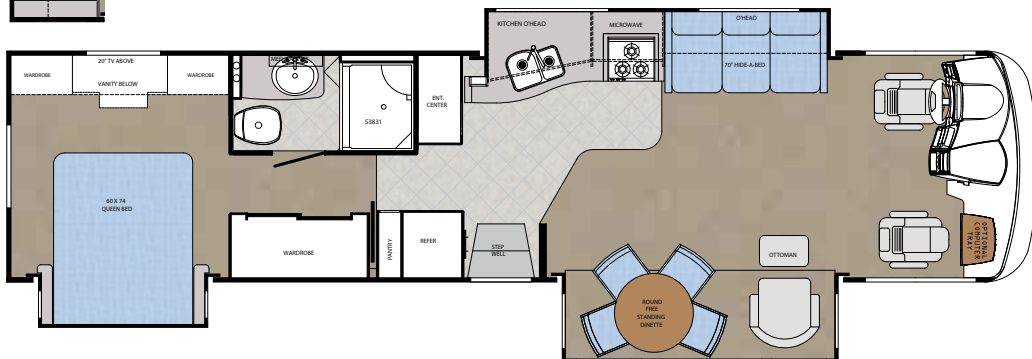
MODEL 8378



Chassis	Ford
Engine	6.8L V-10
Fuel	75
GVWR	22,000
Length	36'-8"
Width	100"
Height w/AC	12'-0"
Interior Height	84"

Wheelbase	242"
Fresh	63 gal.
Grey	50 gal.
Black	50 gal.
LP Gas Tank	85 lbs.
Furnace (BTU's)	40,000
A/C Front/Rear (BTU's)	13,500 / 13,500
Water Heater w/DSI	10 gal.

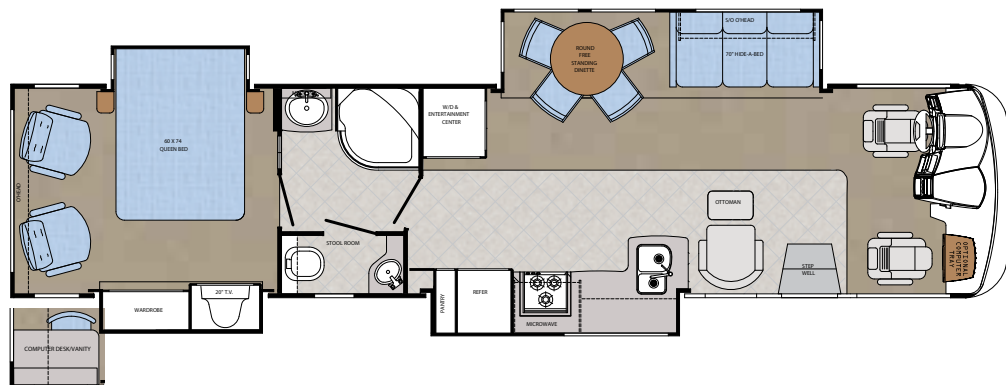
MODEL 8379



Chassis	Workhorse
Engine	8.1 V8
Fuel	75
GVWR	24,000
Length	36'-8"
Width	100"
Height w/AC	12'-0"
Interior Height	84"

Wheelbase	242"
Fresh	60 gal.
Grey	50 gal.
Black	50 gal.
LP Gas Tank	85 lbs.
Furnace (BTU's)	40,000
A/C Front/Rear (BTU's)	13,500 / 13,500
Water Heater w/DSI	10 gal.

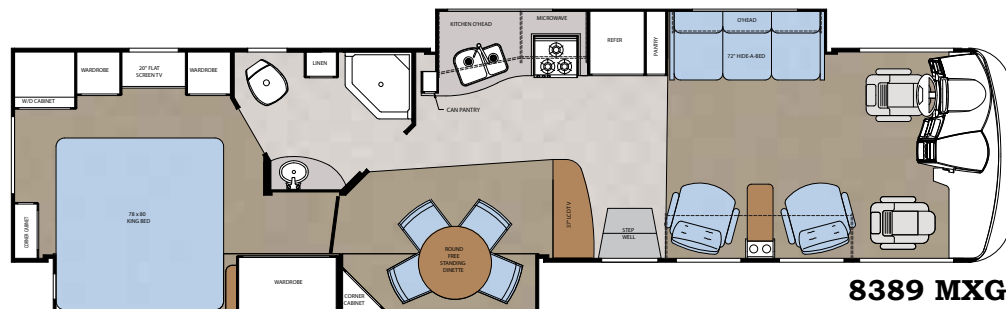
MODEL 8388



Chassis	Workhorse
Engine	8.1 V8
Fuel	75
GVWR	24,000
Length	38'-8"
Width	100"
Height w/AC	12'-0"
Interior Height	84"

Wheelbase	250"
Fresh	70 gal.
Grey	50 gal.
Black	50 gal.
LP Gas Tank	85 lbs.
Furnace (BTU's)	40,000 / 25,000
A/C Front/Rear (BTU's)	13,500 / 13,500
Water Heater w/DSI	10 gal.

MODEL 8389



Chassis	Workhorse
Engine	8.1 V8
Fuel	75
GVWR	24,000
Length	38'-8"
Width	100"
Height w/AC	12'-0"
Interior Height	84"

Wheelbase	266"
Fresh	50 gal.
Grey	50 gal.
Black	50 gal.
LP Gas Tank	85 lbs.
Furnace (BTU's)	40,000 / 25,000
A/C Front/Rear (BTU's)	13,500 / 13,500
Water Heater w/DSI	10 gal.

8389 MXG

Sun Sport

By GULF STREAM



PATENTED SUN ROOM DESIGN...

Open panoramic views, natural lighting and spacious freestanding dinette are just a few of the benefits of the Gulf Stream sun room. More important, is the peace of mind knowing the sun room's skylights are designed to protect the interior from damaging UV light, prevent leaks and aid in climate control.

- BOTH TOP AND BOTTOM GLAZES ARE FORMED OF UNBREAKABLE POLYCARBONATE.
- THE OUTER GLAZE IS TINTED TO MINIMIZE SOLAR HEAT GAIN. THE BOTTOM GLAZE IS CLEAR.
- COLLECTIVELY, BOTH GLAZES ELIMINATE 97% OF THE DAMAGING UV LIGHT.
- ALL WALLS AND CEILING OF THE SUN ROOM ARE INSULATED FOR THERMAL AND SOUND CONTROL.
- EVERY WINDOW AND SKYLIGHT IN THE SUN ROOM IS EQUIPPED WITH A DAY/NIGHT SHADE.



STANDARD PAINT & GRAPHICS GOLD



STANDARD PAINT & GRAPHICS SILVER



FULL BODY PAINT TAN



FULL BODY PAINT BLACK



Chassis

- 20,500 GVWR FORD CHASSIS W/19.5" TIRES (8295)
- 22,000 GVWR FORD CHASSIS W/22.5" TIRES (8351 8368 8378 8379)
- 24,000 GVWR WORKHORSE CHASSIS (REQUIRES 6000 LB HITCH) (8377 8388 8389)

Exterior/Structural

- "Cradle of Strength" Construction:
 - Welded Steel Sub-Floor Truss System
 - 1-1/2" Tubular Metal Cage Construction on Sidewalls & Roof
 - Insulated Floors w/Virtually Seamless Structurewood Decking
 - Vacuum-Bond Laminated 2" Thick Sidewall Construction Smooth Filon Fiberglass
- ALUMINUM SKIN TRUNK DOORS W/SLAM LATCHES
- PRE-MOLDED FRONT & REAR FIBERGLASS CAPS
- LAMINATED FIBERGLASS ROOF
- SLICK WHITE FIBERGLASS EXTERIOR
- STANDARD PAINTED SILVER GRAPHICS
- STANDARD PAINTED GOLD GRAPHICS
- SINGLE PANE RADIUS WINDOWS

Heating & Cooling

- DASH A/C
- 40,000 BTU DUCTED FURNACE (NA 8388 8389)
- (1) 40,000 BTU & (1) 25,000 BTU FURNACE (8388 8389)
- 13,500 BTU LOW PROFILE DUCTED AIR (8295)
- (2) 13,500 BTU LOW PROFILE DUCTED AIR CONDITIONERS (NA 8295)
- 3-SPEED FANTASTIC ATTIC FAN

Miscellaneous

- HYDRAULIC LEVELING SYSTEM
- 5000 LB TRAILER HITCH
- INTERIOR S.S. ENTRY ASSIST HANDLE
- STORAGE TUB(S) IN BASEMENT
- CARPETED STORAGE BINS
- CARPETED ENGINE COVER
- MUD FLAPS (FRONT & REAR)
- STAINLESS STEEL WHEEL INSERTS (8295, 8377, 8388, 8389)
- ALCOA WHEELS (8351, 8368, 8378, 8379) (STANDARD FORD ONLY)
- DELUXE METAL WRAP MAIN AWNING
- SLIDE OUT TOPPER (S)
- SUNROOM SLIDE OUT TOPPER (8377 8379 8388)
- RALLY HOOK UP
 - HOSE FAUCET
 - SHOWER HOSE, HEAD & FAUCET
 - TELEPHONE HOOKUP
 - CABLE TV HOOKUP
 - PAPER TOWEL ROLL DISPENSER

- HEATED HOLDING TANKS
- FIRE EXTINGUISHER W/STRAP
- REAR LADDER
- DASH COMPUTER WORK STATION W/12 V & 110 V OUTLETS
- COAT HOOK

Décor

- MAPLE HARDWOOD INTERIOR
- FLOOR TILE IN KITCHEN, BATH & ENTRY
- DAY/NIGHT PLEATED SHADES
- METAL MINI BLIND KITCHEN
- MIRRORED MEDICINE CABINET
- PRIVACY CURTAIN
- DECORATIVE BEVELED MIRROR DOORS ABOVE SOFA
- DECORATIVE CROWN CEILING MOLDING
- VINYL CEILING LINER

Electrical

- EMERGENCY START SWITCH IN DASH
- AM/FM/CASSETTE STEREO W/CD PLAYER & SPEAKERS
- FLUORESCENT CEILING LIGHTING
- WALL SWITCHES FOR ALL CEILING LIGHTS
- WALL CLOCK
- MAP LIGHTS
- CB ANTENNA
- ANTENNA W/AMPLIFIER, BOOSTER & 2 JACKS
- AUTO ELECTRIC STEP
- 20" SAMSUNG FLAT SCREEN COLOR TV IN BEDROOM (NA 8389)
- SAMSUNG 24" FLATSCREEN COLOR TV IN FRONT OVERHEAD (NA 8389)
- 20" LCD COLOR TV IN BEDROOM (8389)
- 20" LCD COLOR TV IN DINING ROOM (8389)
- 37" LCD COLOR TV IN LIVINGROOM (8389)
- DSS PREP (TRIPOD)
- DVD READY
- COLOR BACK UP MONITOR W/AUDIO
- OVERHEAD DEFROST BLOWER
- LIGHTED EXTERIOR STORAGE BINS
- (1) PHONE JACK IN KITCHEN & (1) IN BEDROOM

Furnishings

- 2-TONE COPILOT SEAT
- 2-TONE PILOT SEAT
- (2) BEDROOM CHAIRS W/OTTOMANS (8377 8378 8388)
- SOFT TOUCH EURO RECLINER & OTTOMAN (PS) (8295 8377 8379 8388)
- SOFT TOUCH RECLINER (8351 8368 8378)
- CLOTH SLEEPER (H-A-B) SOFA (DS)
- (2) EURO RECLINERS W/FLIP UP TABLE (8389)
- COMFORT PLUS DINETTE BOOTH/BED (8351 8368 8378)
- FS ROUND DINETTE W/(2) RESIDENTIAL DINING CHAIRS (8295 8377 8379 8388 8389)
- VANITY BENCH (8351 8368 8378 8389)

- 60 X 74 BED W/DELUXE INNERSPRING MATTRESS (NA 8389)
- 78 X 80 KING BED W/INNERSPRING MATTRESS & POWER LIFT (8389)
- 3 POINT SEAT BELTS
- SILVERWARE DRAWER (8295 8368 8377 8379)
- (2) THROW PILLOWS (LIVING ROOM) & (2) BEDROOM PILLOWS

Appliances

- DOUBLE DOOR 2 WAY REFER
- ROLL OUT PANTRY (NA W/SBS REF)
- MONITOR PANEL
- 30" OTR CONVECTION MICROWAVE
- 3-BURNER TOP
- FLUSH STOVE TOP COVER
- 10 GAL. DSI WATER HEATER
- 85# LP GAS BOTTLE
- CARBON MONOXIDE DETECTOR
- LP GAS LEAK DETECTOR
- WASHER/DRYER PREP (8351 8368 8388 8389)
- DISHWASHER PREP (8351 8368)

Power

- GENERATOR READY
- (2) 12 V AUXILIARY BATTERIES (GROUP 27)
- BATTERY DISCONNECT
- 50 AMP SERVICE W/AUTO TRANSFER SWITCH & 80 AMP CONVERTER

Bath

- NEO-ANGLE SHOWER W/GLASS DOOR & SURROUND (8295 8378)
- SHOWER W/GLASS DOOR & SURROUND (8351 8368 8377 8379 8389)
- RADIUS TUB/SHOWER W/RADIUS GLASS DOOR (8388)
- POWER VENT IN COMMODE & SHOWER AREA
- PORCELAIN PEDAL STOOL W/SPRAYER
- HOLDING TANK FLUSH KIT
- SKY DOME IN BATH

Packages

- XL PACKAGE
 - CORIAN KITCHEN C-TOP
 - CAP MOUNT HEATED & REMOTE EXTERIOR MIRRORS W/PAINT
 - HARDWOOD DINETTE TABLE
 - 6-PANEL REFER DOOR INSERTS

Popular Options

- ☐ 20,700 GVWR WORKHORSE CHASSIS W/19.5" TIRES (8295)
- ☐ 22,000 GVWR WORKHORSE CHASSIS W/22.5" TIRES (8351 8368 8378 8379)
- ☐ 24,000 GVWR WORKHORSE CHASSIS (REQUIRES 6000 LB HITCH) (8351 8368 8378 8379)
- ☐ DIESEL PACKAGE (8377 8388 8389)
 - 26,000 GVWR 300 HP CUMMINS FREIGHTLINER, 80 GAL FUEL TANK W/STEEL WHEELS
 - 5.5 ONAN QUIET DIESEL GENERATOR
- ☐ ELECTRIC MAIN AWNING
- ☐ DELUXE FULL BODY PAINT – TAN
- ☐ DELUXE FULL BODY PAINT – BLACK
- ☐ SAND & BUFF
- ☐ THERMOPANE WINDOWS (NA 8295) (8378 8379 REQUIRE 24,000 GVWR CHASSIS)
- ☐ LOGO REAR ROCK GUARD
- ☐ RADIUS TUB/SHOWER W/RADIUS GLASS DOOR (8378)
- ☐ 2000 WATT INVERTER
- ☐ 5.5 ONAN GAS GENERATOR
- ☐ 7.0 KW ONAN GAS GENERATOR
- ☐ 15,000 BTU LOW PROFILE DUCTED A/C IPO 13,500 BTU A/C (8295)
- ☐ (1) 15,000 & (1) 13,500 BTU LOW PROFILE DUCTED A/C'S
- ☐ SONY SURROUND SOUND SYSTEM W/DVD PLAYER
- ☐ ELECTRONICS PACKAGE
 - 30" LCD TV IN FRONT OVERHEAD
 - LOWRANCE GPS NAVIGATION SYSTEM
 - WINEGARD SATELLITE DISH
 - MP3 PLAYER
- ☐ SOFT TOUCH SLEEPER (H-A-B) SOFA IPO CLOTH SLEEPER (DS)
- ☐ EURO RECLINER IPO SOFT TOUCH RECLINER (8351 8368 8378)
- ☐ 2-TONE 6-WAY POWER PILOT SEAT
- ☐ 2-TONE 6-WAY POWER COPILOT SEAT
- ☐ F/S BUFFET DINETTE W/(2) RESIDENTIAL DINING CHAIRS IPO BOOTH DINETTE (8351 8368 8378)
- ☐ COMPUTER DESK, (1) CHAIR IPO (2) BEDROOM CHAIRS (8377 8378 8388)
- ☐ (2) FOLDING CHAIRS
- ☐ (2) EURO CHAIRS IN BEDROOM IPO BEDROOM CHAIRS (8377 8378 8388)
- ☐ UPGRADED FABRICS – SANTA FE
- ☐ UPGRADED FABRICS – TONY BERMUDA
- ☐ LARGE 2-WAY REFER W/ICEMAKER & PURIFIER (#2862IM)
- ☐ SIDE BY SIDE REFER W/ICE MAKER & PURIFIER NDR1292IMH (NA 8377)
- ☐ COMBO WASH/DRY W/OUTSIDE VENT (8351 8368 8388 8389)
- ☐ DISHWASHER (8351 8368)



**DEDICATED TO QUALITY,
INNOVATION AND
VALUE.**

GULF STREAM



COACH, INCORPORATED
FAMILY VALUE

Gulf Stream Coach

has been a manufacturer of recreational vehicles for over 20 years. Our slogan, "Family Value", speaks to our family-owned company, the value offered in our products and to our customers.

We use advanced manufacturing techniques to build everything from entry-level travel trailers to luxury motorhomes. We offer the largest product line in the industry.

RV dealers and consumers look to Gulf Stream for high-value products offering quality construction, innovative features, contemporary design, unmatched service and on-going support.

We'd love to have you as part of the family



The Gulf Streamers RV Club is a valuable benefit to all Gulf Stream owners. Members enjoy staying active and participating in the various rallies and caravans offered throughout the United States and Canada. The Main Stream, the club Magazine, with up-to-date product information, service tips and company highlights. Members benefit from the Emergency Road Service and Gulf Streamers Insurance options. Both are available at competitive rates with friendly, reliable service. The 10% discount program at campgrounds throughout the U.S. and Canada. As a member, you'll receive discounts at National Theme Parks and special attractions, including RV and travel guides, directories and magazines.

Gulf Streamers spend time touring attractions, enjoying fabulous meals, taking in area highlights and shows to help make the most out of your RV experience. Special rallies throughout the year include Gulf Stream supplier seminars, complimentary minor repairs by Gulf Stream technicians, Gulf Stream dealer product displays and round table discussions to voice your product improvement ideas.



POST OFFICE BOX 1005

• YOUR GULF STREAM COACH DEALER •

NAPPANEE, IN 46550

VISIT

WWW.GULFSTREAMRV.COM

OR CALL

1-800-765-8787-EXT. 3288

For more information and available options, contact your local Gulf Stream dealer, www.gulfstreamrv.com or Gulf Stream Coach, Inc. Gulf Stream Coach, Inc., reserves the right to make changes in prices, colors, materials, components and specifications and to discontinue models at any time without notice or obligation. Gulf Stream Coach, Inc., assumes no responsibility for any error in type or print reproduction of specifications or floorplans in this brochure. Photographs may show equipment or items that are optional and are not included in the purchase price of the coach. Test drive and review a current model at your nearest Gulf Stream dealer. © 2002 Gulf Stream Coach, Inc., Nappanee, Indiana U.S.A.

6/06-SP-10k Ver 1