

2008



CLASS A GAS
MOTORHOMES

*DEDICATED TO QUALITY,
INNOVATION AND VALUE.*

GULF STREAM



COACH, INCORPORATED
FAMILY VALUE

INDEPENDENCE



INDEPENDENCE



MODEL 8360

ERGONOMIC KITCHEN...

The Independence offers abundant storage and kitchen work space to prepare your family's favorite meals. This unique kitchen features a large refrigerator, 3-burner range, convection microwave and dual basin sink. Corian™ (optional) counters and sink covers provide a durable and spacious food preparation area.



MODEL 8327

SPACIOUS BEDROOM...

Gulf Stream's living concept gives you more room to utilize throughout the day. You will have plenty of room to relax...shut the bedroom off from the rest of the coach for privacy, allowing you to read a good book, watch TV or just relax.

The Independence offers a unique bunk bed configuration built into the slide room which offers optional flip down DVD player for each bunk.



MODEL 8359

BATHROOM...

The wide open concept bathroom with residential one piece shower and surround delivers the extra space needed to get ready for the day ahead.



MODEL 8367

VALUE...

Gulf Stream believes in adding value to the coach by utilizing residential hardware, durable cloth decor, residential carpet and linoleum, and Gulf Stream's very own Comfort Plus Furniture found only in a Gulf Stream Coach.

The main living area of the Independence also features a flat screen television, large hide-a-bed sofa, and spacious dinette which can be replaced with a free standing dinette table and chairs on select floor plans.



MODEL 8295



MODEL 8367

DECOR...

1. Tony Bermuda
2. Mocha
3. Emerald
4. Remington



INDEPENDENCE

Seamless FIBERGLASS ROOF

Excellent Weathering

- Maintaining the vehicle's quality appearance enhances its resale value.

Tear Resistance - Flexroofs hard abuse resistant finish resists tearing, a condition that can cause leaks and lead to expensive repair.

Low Maintenance - Road grime can easily be removed with normal cleaning maintenance. Rubber chalking due to solar breakdown of the roof surface is eliminated, preserving the original appearance and resale value of the vehicle.

Stain Resistance - Fiberglass Flexroof is designed to resist staining and maintain its quality appearance.

Structural Integrity - Unlike conventional EPDM rubber roof membranes, Flexroof is a structural component of the roof system.

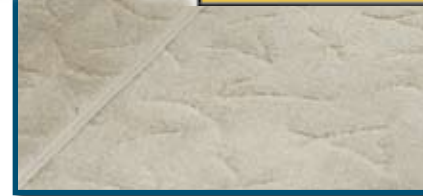
Textured Fiberglass - Helps dissipate heat and prevents tree limbs from tearing or scratching your roof.



Unlike traditional plywood and foam seating Comfort Plus dinette seating features the strength of steel and the comfort of a sprung cushion.

All Comfort Plus furniture by Gulf Stream Coach also features residential styling, solid construction, total comfort and a comprehensive warranty.

FLUSH FLOOR Slide out rooms



Gulf Stream offers true flush floor slide out rooms giving you more headroom in the slide and eliminating the step up into the slide room that you will experience in many of our competitors motorhomes.

GALVANIZED STEEL STORAGE COMPARTMENTS



Seamless, carpeted, galvanized steel storage compartments safely cradle your valuables. Rust protective paint and foam sealed for extended life and a quiet ride.



Dual metal H-Ducted air conditioning system with bubble wrapped foil insulation for superior climate control.

Cradle of Strength



The Cradle of Strength super strength truss system is unmatched in the RV industry. The structural subfloor foundation begins by welding a network of integrated steel trusses to the chassis rail. Specifically designed to distribute and transfer the tremendous forces from the coach to the chassis rail these trusses are individually tested to withstand 6,000 pounds each.

The all steel overhead structure installed above the cockpit brings strength and rigidity to the upper portion of the coach providing a safe strong platform to install a TV that will not break free in an impact and maximizing overhead storage.



Exterior Options



STANDARD BODY PAINT
(Independence logos are vinyl decals)



PAINTED SKIRT



DELUXE FULL BODY PAINT
(Independence logos are vinyl decals)

OPTIONAL DIESEL PACKAGE

Enjoy all the benefits of diesel power without going to a rear engine configuration. Built by Freightliner, this 22,000 GVWR chassis features a quiet Cummins 300hp diesel engine, 22.5" tires 55 degree wheel cut, and 60" parabolic leaf spring suspension for a convenient and comfortable ride.



FRONT ENGINE DIESEL

- 22,000 GVWR FREIGHTLINER, 60 Gal. Fuel (8327 8359)
- 27,000 GVWR 340 HP CUMMINS FREIGHTLINER, 80 Gal. Fuel (8360 8367)
- 5,000 LB. HITCH
- BOSCH DISC BRAKES W/4-WHEEL ABS
- LOWERED CENTER OF GRAVITY
- LOWERED ENGINE MOUNT
- IMPROVED MPG
- 15,000 MILE OIL CHANGE INTERVAL
- 5-YEAR / 100,000-MILE COOLANT
- 400%-LONGER-LIFE TRANSMISSION FLUID
- READILY IDENTIFIABLE SERVICE POINTS
- ALLISON TRANSMISSION

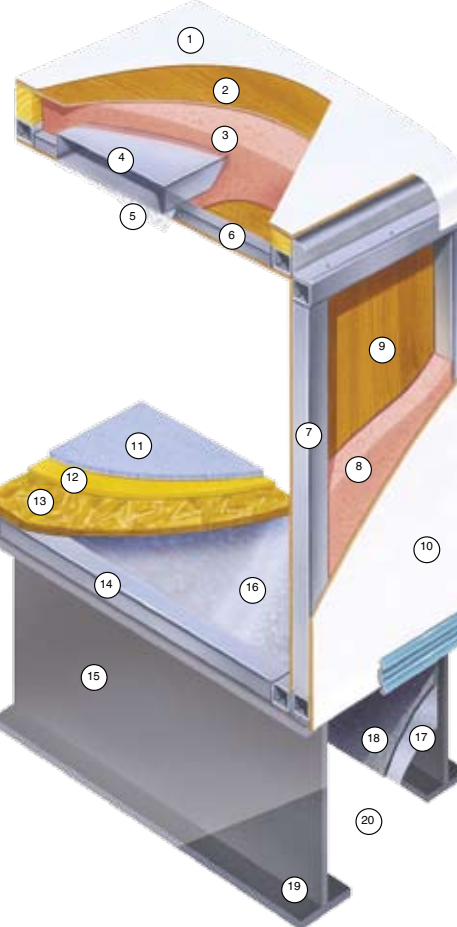
(NA 8295 8330)

UP TO 12 MPG.*

OPTIONAL PAINT

Red, Blue, Silver, Tan

* actual mileage per gallon may vary due to road conditions, terrain, driver habits, cargo weight, or towing.



TAKE THE TIME TO COMPARE...

and you will see the exceptional value of a Gulf Stream Coach

1. Laminated seamless fiberglass roof.
2. Luan Decking for Additional Strength.
3. Molded, High Density EPS (Expanded Polystyrene) Roof Brick Insulation - Provides Consistent Insulation Value as well as Superior Dimensional Rigidity.
4. One-Piece Formed Aluminum Air Conditioning Duct, Completely Surrounded By EPS Insulation.
5. Bubble-Wrapped Foil Insulation Provides Superior Insulation and Helps Prevent Condensation.
6. Rugged Welded Tubular Aluminum Roof Framing.
7. Rugged Heavy-Gauge Tubular Aluminum, Fixture Welded to Form the Sidewall Framing.
8. High-Density EPS Insulation Provides Superior Lamination and Bonding Characteristics and Insures Greater Energy Efficiency.
9. Interior Wall Panels Securely Laminated to Sidewall Framing.
10. "Super Slick" Fiberglass Exterior Vacuum-bond Laminated to Sidewall Framing for Lasting Beauty and Durability.
11. High-Quality Stain-Resistant Carpeting Available in Designer Coordinated Colors.
12. Extra-Thick Padding Under Carpet Provides Extra Comfort and Increases Carpet Durability.
13. Seamless Structurewood Floor Decking Laminated to Steel Floor Structure Assures a Quiet, Long-Lasting Rigid Floor.
14. Heavy-Gauge Tubular Steel Framing, Fixture Welded for Extra Strength and Stability.
15. Heavy-gauge Steel I-Beam Floor Truss System Provides the Strongest Foundation in the Industry.
16. Seamless Layer of Galvanized Steel Securely Attached to the Steel Floor Framing.
17. Galvanized Steel Used to Form Each Storage & Holding Compartment.
18. Durable All-Weather Carpeting Completes Each Accessible Storage Compartment, Providing Extra Protection for Luggage and Valuables.
19. Rust-Prohibitive Paint Coating Applied to All Steel Framing Assures Corrosion and Rust Protection.
20. The Industry's Strongest, Most Spacious Exterior Storage Compartments.



G.O.L.D. Program

(Gulf Stream Ownership Lifetime of Dedication)

Gulf Stream is dedicated to our customers and their enjoyment of our products. Our golden promise is to call you within four weeks of the new vehicle purchase date welcoming you to the Gulf Stream family. This call, made by your dedicated customer care professional, is to let you know that if you ever need assistance with the operation of components, troubleshooting, or if you ever need to locate an authorized service center, you can rest assured that help is but a phone call away. With the G.O.L.D. Program we'll be there for you for the lifetime of your RV.

Coach-Net®

24 HR. EMERGENCY ROADSIDE ASSISTANCE

- One Year Coach-Net Membership
- Towing and Winching
- Delivery of emergency Fluids
- Flat Tire Change
- Jump-Start / Battery Boost
- Mobile Mechanic
- Lockout

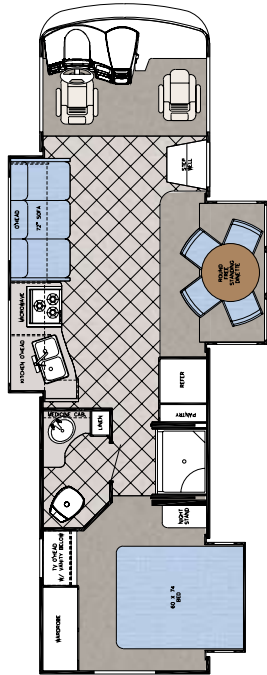
2 YEAR UNLIMITED MILEAGE TRANSFERABLE WARRANTY ON STRUCTURAL COMPONENTS*

One year unlimited mileage total use warranty under normal use against defects in material and/or workmanship in construction and original components. *For purposes of this warranty, "Structural components" shall be limited to the structure of the side walls, front and back walls, roof and floor. See the official written Gulf Stream Coach, Inc. Limited Warranty for details.

Floorplans and Specifications

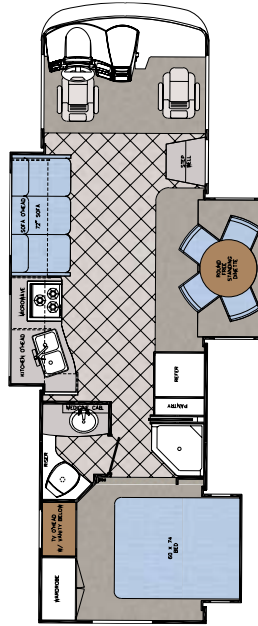
Holding tank capacities (both fresh water and waste water) are volume calculations based on overall tank dimensions. The capacities may differ from published calculations due to the result of tank installation, tank material variation, tank fitting locations and other plumbing variables.

*Estimated length from front to rear ladder.



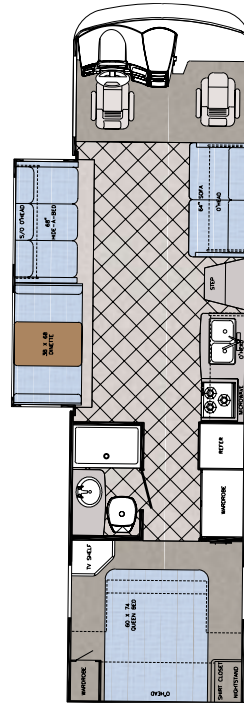
MODEL 8327

Chassis	Freightliner
Engine	300 Cummins
Fuel	60
GVWR	22,000
Length	33'-5"
Width	100"
Height w/AC	12'
Interior Height	84"
Wheelbase	208"
Fresh	60 gal.
Grey	40 gal.
Black	40 gal.
LP Gas Tank	85 lbs.
Furnace (BTU's)	40,000
A/C Front (BTU's)	13,500
Water Heater w/DSI	10 gal.



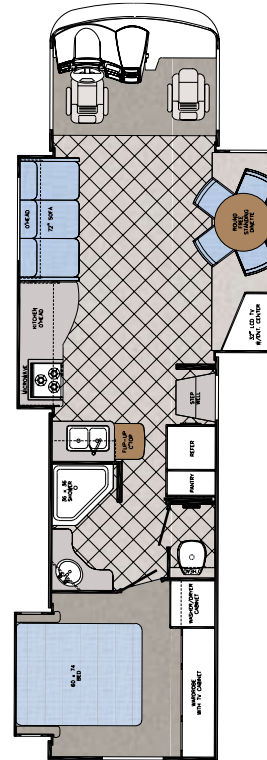
MODEL 8295

Chassis	Ford
Engine	V-10
Fuel	75
GVWR	20,500
Length	31'-5"
Width	100"
Height w/AC	11'-10"
Interior Height	84"
Wheelbase	208"
Fresh	57 gal.
Grey	36 gal.
Black	36 gal.
LP Gas Tank	85 lbs.
Furnace (BTU's)	40,000
A/C Front (BTU's)	13,500
Water Heater w/DSI	6 gal.



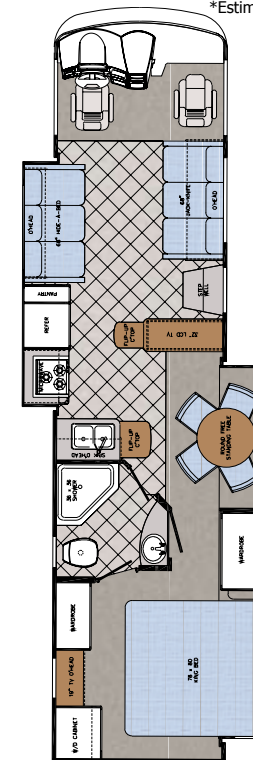
MODEL 8330

Chassis	Ford
Engine	V-10
Fuel	75
GVWR	20,500
Length	32'-11"
Width	100"
Height w/AC	11'-10"
Interior Height	84"
Wheelbase	208"
Fresh	60 gal.
Grey	40 gal.
Black	40 gal.
LP Gas Tank	85 lbs.
Furnace (BTU's)	40,000
A/C Front (BTU's)	13,500
Water Heater w/DSI	6 gal.



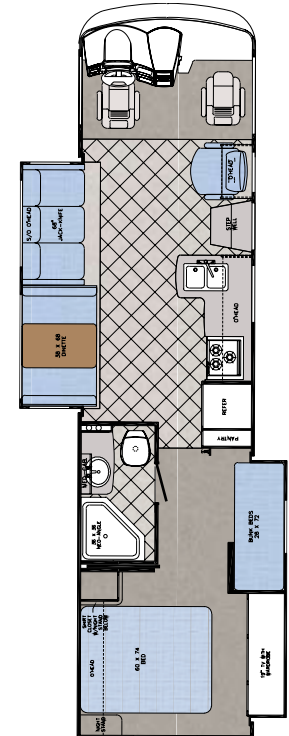
MODEL 8367

Chassis	Ford
Engine	V-10
Fuel	75
GVWR	22,000
Length	38'-1"
Width	100"
Height w/AC	12'-0"
Interior Height	84"
Wheelbase	242"
Fresh	60 gal.
Grey	40 gal.
Black	40 gal.
LP Gas Tank	85 lbs.
Furnace (BTU's)	40/20k
A/C Front (BTU's)	13,500
Water Heater w/DSI	10 gal.



MODEL 8360

Chassis	Ford
Engine	V-10
Fuel	75
GVWR	22,000
Length	36'-9"
Width	100"
Height w/AC	12'-0"
Interior Height	84"
Wheelbase	228"
Fresh	60 gal.
Grey	40 gal.
Black	40 gal.
LP Gas Tank	85 lbs.
Furnace (BTU's)	40/20k
A/C Front (BTU's)	13,500
Water Heater w/DSI	10 gal.



MODEL 8359

Chassis	Ford
Engine	V-10
Fuel	75
GVWR	22,000
Length	35'-5"
Width	100"
Height w/AC	12'-0"
Interior Height	84"
Wheelbase	228"
Fresh	60 gal.
Grey	40 gal.
Black	40 gal.
LP Gas Tank	85 lbs.
Furnace (BTU's)	40/20k
A/C Front (BTU's)	13,500
Water Heater w/DSI	10 gal.

Standards & Options

CHASSIS

- 20,500 GVWR FORD W/19.5" TIRES (8295 8330)
- 22,000 GVWR FORD W/22.5" TIRES (NA 8295 8327 8330)
- 22,000 GVWR FREIGHTLINER W/300HP CUMMINS (8327)

POWER

- 5.5 GENERAC GENERATOR (NA 8327)
- (2) AUXILIARY BATTERIES
- BATTERY DISCONNECT
- 50 AMP SERVICE W/AUTO TRANSFER SWITCH & 80 AMP CONVERTER
- 7.5 GENERAC DIESEL GENERATOR (8327)

DÉCOR

- LINOLEUM IN KITCHEN, BATH, HALL & ENTRY
- MAPLE HARDWOOD CABINETRY
- PULL SHADES
- METAL MINI BLIND – KITCHEN
- PRIVACY CURTAIN
- PADDED VINYL CEILING
- MIRRORING MEDICINE CABINET
- BRUSHED NICKEL HARDWARE

HEATING & COOLING

- DASH A/C
- 13,500 BTU DUCTED ROOF A/C
- (1) 40,000 BTU & (1) 20,000 BTU FURNACE (8359 8360 8367)
- 40,000 BTU DUCTED FURNACE (8295 8327 8330)

MISCELLANEOUS

- CARPETED ENGINE COVER
- CARPETED STORAGE BIN
- WHEEL COVERS (NA 22,000 GVWR Ford)
- ALUMINUM RIMS (22,000 GVWR CHASSIS)
- DEAD BOLT LOCK ENTRY DOOR
- ENTRY DOOR ASSIST BAR
- 5000 LB TRAILER HITCH
- EXTERIOR SIDE VIEW MIRRORS
- SLIDE OUT TOPPER(S)
- POWER MAIN AWNING
- CENTRAL VACUUM SYSTEM
- LEVELING JACKS (FULL AUTO)

ELECTRICAL

- 15" LCD COLOR TV ACROSS FROM BUNKS (8359)
- CABLE TV HOOK UP
- DVD READY
- EMERGENCY START SWITCH IN DASH
- OVERHEAD DEFROST BLOWER
- MAP LIGHTS
- FLUORESCENT LIGHTS THROUGHOUT
- PORCH LIGHT
- AM/FM/CASSETTE STEREO W/CD PLAYER & SPEAKERS
- ANTENNA W/AMP, BOOSTER & (2) JACKS
- CB ANTENNA
- DSS PREP (TRIPOD)
- 24" FLAT SCREEN COLOR TV IN FRONT OVERHEAD (NA 8360 8367)
- 32" LCD COLOR TV (8360 8367)
- AUTO ELECTRIC STEP
- PREP FOR OUTSIDE ENTERTAINMENT CENTER FUN (CO-AX CABLE)

APPLIANCES

- SM DOUBLE DOOR 2-WAY REFER
- MONITOR PANEL
- 30" OTR CONVECTION MICROWAVE
- 3-BURNER TOP
- 6-GAL ELECTRIC IGNITION WATER HEATER W/BY-PASS VALVE (8295 8330)
- 10 GAL WATER HEATER (NA 8295 8330)
- 85# LP GAS BOTTLE
- LP GAS LEAK DETECTOR
- CARBON MONOXIDE DETECTOR

BATH

- SHOWER W/SURROUND & PLEATED DOOR (8330)
- SHOWER W/GLASS DOOR & SURROUND (NA 8330)
- POWER VENT IN COMMODE & SHOWER AREA

FURNISHINGS

- 60 X 74 BED W/DELUXE INNERSPRING MATTRESS (NA 8360)
- 78 X 80 KING BED W/DELUXE INNERSPRING

MATTRESS (8360)

- (2) BUNK BEDS (8359)
- COMFORT PLUS DINETTE BOOTH BED (8330 8359)
- FS ROUND DINETTE W/(2) RESIDENTIAL DINING CHAIRS (8295 8327 8360 8367)
- SOFT TOUCH PILOT SEAT
- SOFT TOUCH CO-PILOT SEAT
- 3-POINT SEAT BELTS
- VANITY BENCH (NA 8330 8359 8367)
- PLEATED PRIVACY DOOR (8295 8330 8359)
- SINGLE BARREL CHAIR (PS) (8359)
- CLOTH J-KNIFE SOFA (PS) (8330 8360)
- CLOTH HIDE A BED SOFA (DS)
- DREAM DINETTE RAISE/LOWER SYSTEM (NA 8295 8327 8360 8367)

EXTERIOR/STRUCTURAL

- "CRADLE OF STRENGTH" CONSTRUCTION:
 - Welded Steel Sub-Floor Truss System
 - 1-1/2" Tubular Metal Cage Construction on Sidewalls & Roof
 - Insulated Floors w/Virtually Seamless Structurewood Decking
 - Vacuum-Bond Laminated 2" Thick Sidewall Construction
- LAMINATED FIBERGLASS ROOF
- SLICK WHITE FIBERGLASS EXTERIOR WALLS
- ALUMINUM SKIN TRUNK DOORS W/SLAM LATCHES
- PREMOLDED FRONT & REAR FIBERGLASS CAPS

VALUE PACKAGE (required)

- THERMOPANE WINDOWS
- VINYL CEILING
- CENTRAL VAC
- FLUORESCENT LIGHTING
- POWER AWNING

POPULAR OPTIONS

- ☐ DIESEL PACKAGE (NA 8330 8295)
 - 22,000 GVWR 300 HP CUMMINS FREIGHTLINER DIESEL (8327 8359)
 - 7.5 GENERAC DIESEL GENERATOR WITH 50 AMP SERVICE
 - 27,000 GVWR 340 HP CUMMINS FREIGHTLINER DIESEL (8360 8367)
- ☐ PAINTED SKIRT
- ☐ FULL PAINT W/PAINTED GRAPHICS WITH DOUBLE CLEAR COAT
- ☐ OUTSIDE SHOWER FLUSH KIT
- ☐ HEATED & REMOTE EXTERIOR MIRRORS
- ☐ HEATED HOLDING TANKS
- ☐ REAR LADDER
- ☐ GPS NAVIGATION SYSTEM
- ☐ CORIAN KITCHEN COUNTERTOP
- ☐ 15,000 BTU ROOF AC IPO 13,500 ROOF AC
- ☐ REAR 11,000 BTU DUCTED AC
- ☐ 3-SPEED FANTASTIC ATTIC FAN
- ☐ 19" LCD COLOR TV IN BEDROOM
- ☐ COLOR BACK UP MONITOR W/AUDIO & SIDE CAMERAS
- ☐ DVD PLAYER
- ☐ 5.5 ONAN GENERATOR W/50 AMP SERVICE, AUTO TRANSFER SWITCH & 80 AMP CONVERTER
- ☐ 7.5 ONAN DIESEL GENERATOR REQUIRES DIESEL PACKAGE OPTION
- ☐ F/S BUFFET DINETTE W/(2) RESIDENTIAL DINING CHAIRS IPO BOOTH DINETTE (NA 8295 8327 8360 8367)
- ☐ (2) FOLDING CHAIRS
- ☐ SOFT TOUCH H-A-B SOFA (DS) (NA 8360)
- ☐ SOFT TOUCH EURO RECLINER (8295 8327)
- ☐ SOFT TOUCH EURO RECLINER IN PLACE OF BARREL CHAIR (8359)
- ☐ POWER PILOT SEAT
- ☐ LG 2-WAY DOUBLE DOOR REFER
- ☐ RAISED REFER PANELS
- ☐ WASHER/DRYER (8360 8367)
- ☐ (2) FLIP DOWN DVD PLAYER (8359)

GULF STREAM



COACH, INCORPORATED
FAMILY VALUE



**DEDICATED TO QUALITY,
INNOVATION AND VALUE.**



The Gulf Streamers RV Club is a valuable benefit to all Gulf Stream owners. Members enjoy staying active and participating in the various rallies and caravans offered throughout the United States and Canada. Go to <http://streamers.gulfstreamcoach.com> for more information.



Learn more about our wide range of products at

www.GULFSTREAMRV.com

Gulf Stream Coach

has been a manufacturer of recreational vehicles for over 25 years. Our slogan, "Family Value", speaks to our family-owned company, the value offered in our products and to our customers.

We use advanced manufacturing techniques to build everything from entry-level travel trailers to luxury motorhomes. We offer the largest product line in the industry.



RV dealers and consumers look to Gulf Stream for high-value products offering quality construction, innovative features, contemporary design, unmatched service and on-going support.

We'd love to have you as part of the family!



POST OFFICE BOX 1005 NAPPANEE, IN 46550
• YOUR GULF STREAM COACH DEALER •

For more information and available options, contact your local Gulf Stream dealer, www.gulfstreamRV.com or Gulf Stream Coach, Inc. Gulf Stream Coach, Inc., reserves the right to make changes in prices, colors, materials, components and specifications and to discontinue models at any time without notice or obligation. Gulf Stream Coach, Inc., assumes no responsibility for any error in type or print reproduction of specifications or floorplans in this brochure. Photographs may show equipment or items that are optional and are not included in the purchase price of the coach. Test drive and review a current model at your nearest Gulf Stream dealer. © 2008 Gulf Stream Coach, Inc., Nappanee, Indiana U.S.A.

01-08-08-SP-10K Ver 3