

# *Journeyer*





*Model JT359FKS Shown with Pinto Decor*

***Journeyer***  
TRAVEL TRAILERS





*JT340FLR*



*JT340FLR*



*JT340FLR*



*Model: JT340FLR*

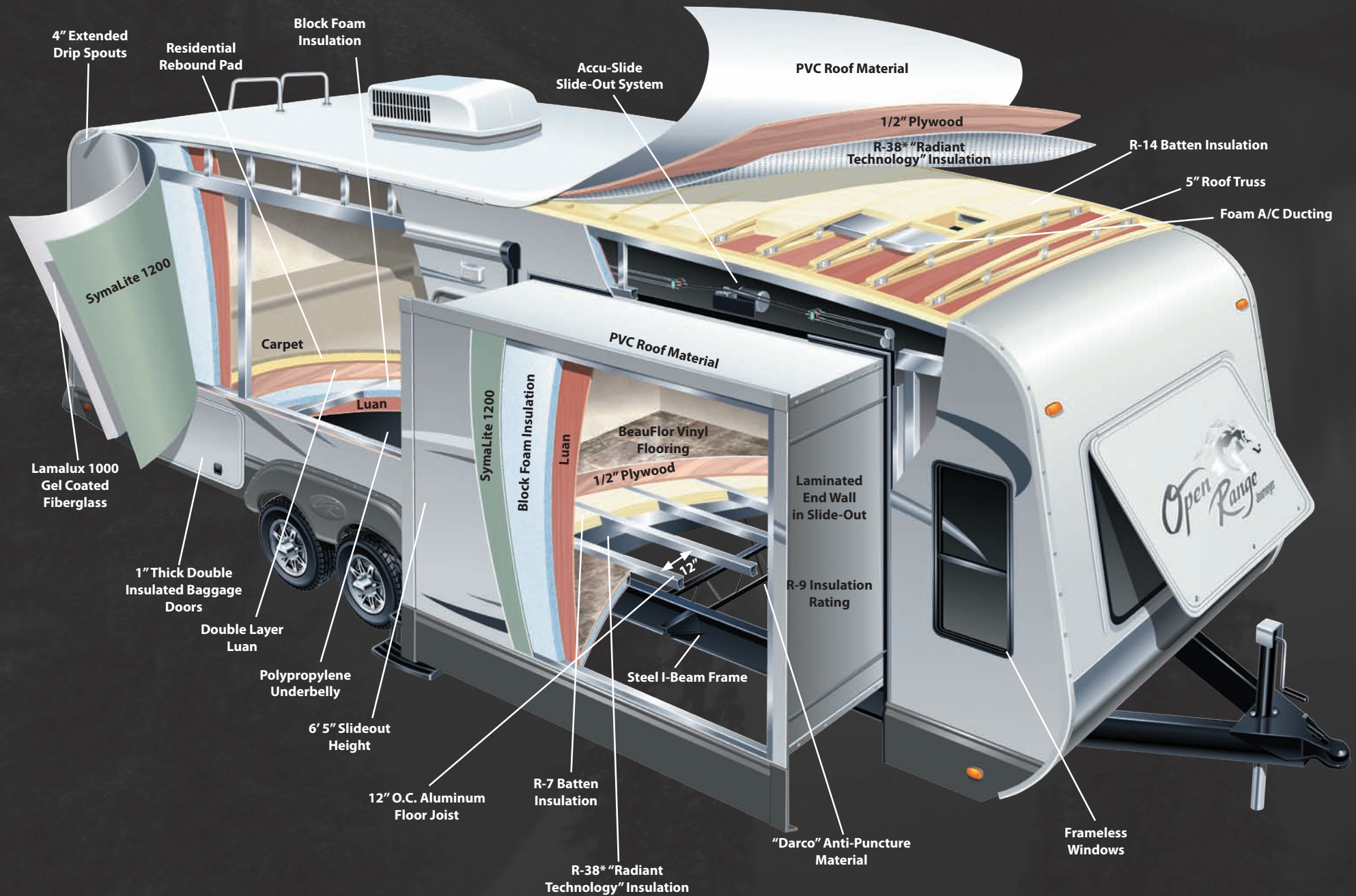


*LED Awning Light*



*Corian® Island on Castors*

# TRAVEL TRAILER CONSTRUCTION



## STANDARD FEATURES:

- HIGH OUTPUT RANGE W/IGNITER AND LARGE 22" OVEN
- HEAVY DUTY FULL EXTENSION DRAWER GUIDES
- LARGE LAVATORY SINK
- EXTERIOR UTILITY CENTER W/ BLACK TANK FLUSH
- PORCELAIN TOILET W/ FOOT PEDAL FLUSH
- DEXTER EZ LUBE AXLES
- DEXTER EZ FLEX SUSPENSION
- FRONT & REAR STABILIZER JACKS
- LP QUICK CONNECT
- 80 LBS OF LP CAPACITY (N/A JT337RLS)
- 100" WIDE BODY FRAME
- PVC ROOF MATERIAL
- NITROGEN FILLED RADIAL TIRES
- FRENCH DOOR TO BEDROOM
- 50 AMP SERVICE

## EXECUTIVE PACKAGE: (MANDATORY)

- FLAT SCREEN TV IN LIVING AREA
- 12v CD/DVD/MP3/AM/FM/iPod STEREO
- MULTI-PORT SATELLITE HOOK-UP
- DIGITAL TV ANTENNA W/ BOOSTER
- LARGE 8 CU FT REFRIGERATOR
- 30" OTR MICROWAVE
- 10 GAL. GAS/ELECTRIC WATER HEATER
- CORIAN® COUNTERTOPS
- "COMFORT CLOUD" PILLOWTOP MATTRESS
- FANTASTIC FAN IN KITCHEN
- CAREFREE OF COLORADO POWER AWNING
- LED AWNING LIGHT
- "MAXX AIR" VENT COVER
- CONCEALED HINGES
- KNOTTY ALDERWOOD CABINET DOORS
- LED LIGHTING IN CEILING
- CROWN MOLDING
- WIRED AND FRAMED FOR 2ND A/C
- REMOVABLE REAR LADDER
- FULL VIEW VENTED ENTRANCE DOOR
- FRAMELESS WINDOWS

## FOUR SEASONS PACKAGE: (MANDATORY)

- R-38\* INSULATION IN ROOF & FLOOR
- R-9 INSULATION IN SIDEWALL
- ATWOOD® HIGH PERFORMANCE FURNACE
- HEATED AND ENCLOSED UNDERBELLY
- DOUBLE INSULATED BAGGAGE DOORS
- HEATED STORAGE AREA
- DIGITAL THERMOSTAT
- INSULATED SLIDE FLOORS
- HEATED & ENCLOSED DUMP VALVES

\*CALCULATED

2-Year Limited Transferable Warranty

## OPTIONS:

- 26" BEDROOM TV
- FIREPLACE
- DYSON VACUUM CLEANER
- ADDITIONAL FANTASTIC FAN
- ALL DARK WOOD
- RECLINERS IPO SWIVEL ROCKERS (FORCED)
- CORIAN® ISLAND ON CASTORS
- CEILING FAN
- 2ND A/C (13.5k BTU DUCTED)
- DUAL PANE WINDOWS
- 16" ALUMINUM WHEELS (MANDATORY)
- POWER TONGUE JACK
- LOCK ARM STABILIZER BARS
- PATIO DECK (JT340FLR & JT359FKS)
- SLIDE-OUT AWNING COVERS
- POWER FRONT & REAR STABILIZER JACKS
- REAR STORAGE TRAY

**\*\*PLEASE CONTACT YOUR LOCAL DEALER TO ENSURE AVAILABILITY OF STANDARDS AND OPTIONS ON A SPECIFIC FLOORPLAN.**

## INTERIOR DECORS:



PINTO



SEDONNA



SILT



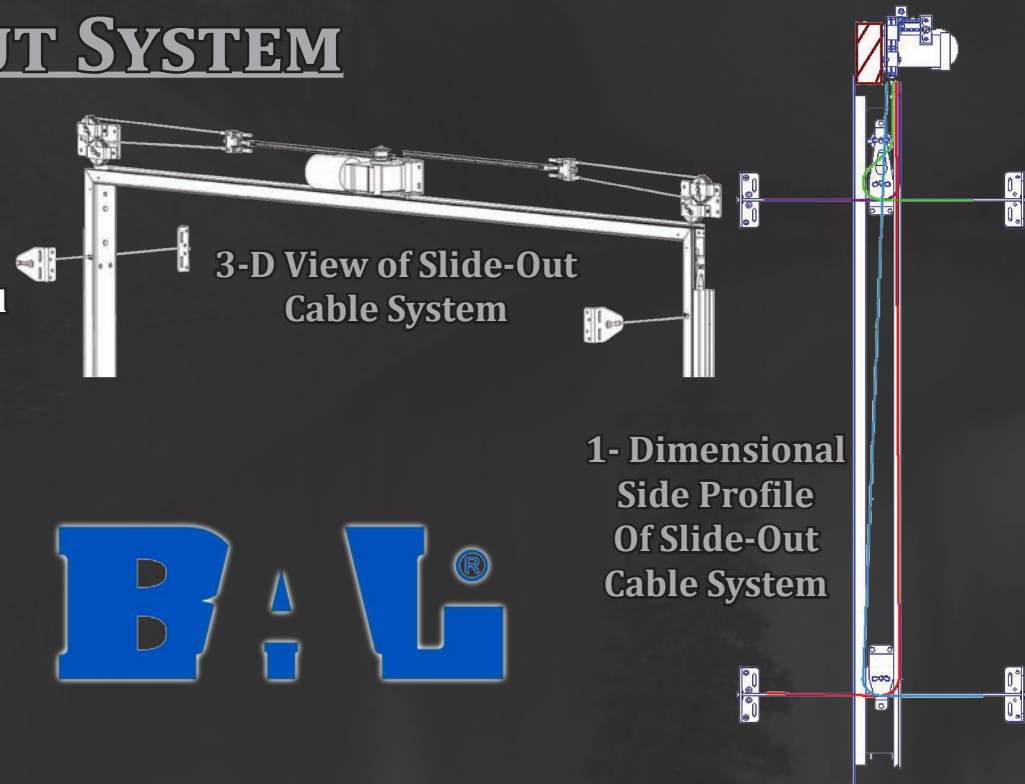
STORM



# SLIDE-OUT SYSTEM

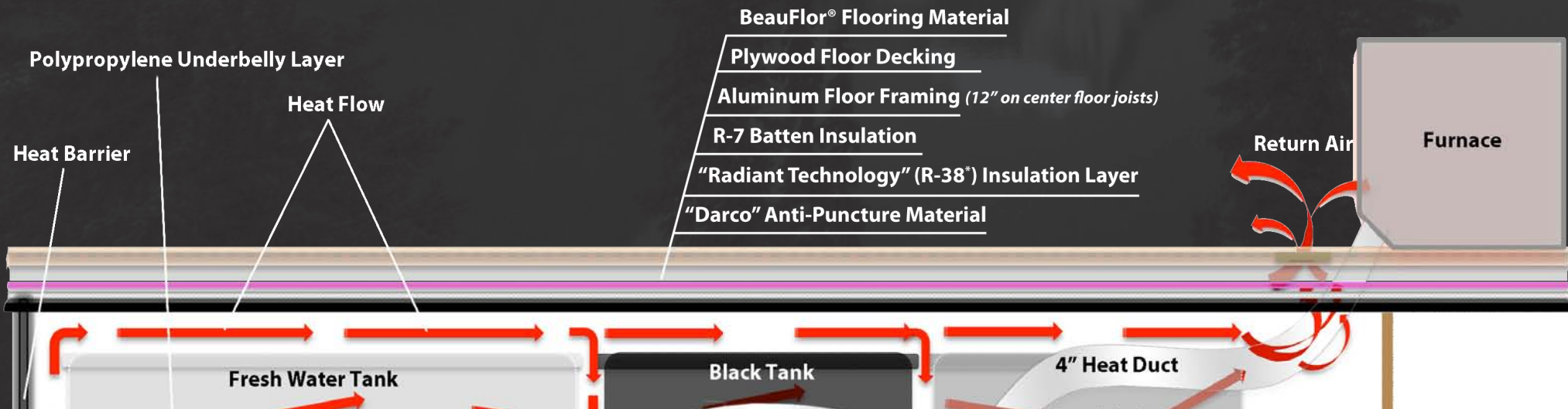
## 10 Reasons Why... Accu-Slide

1. Above floor design means more storage area for your RV
2. Lightweight design promotes fuel savings
3. High strength stainless steel aircraft cable is used for control
4. Cable control at all 4 room corners helps stop leaks
5. Working components are in your RV, safe from the elements
6. Locking motor secures room in or out to help stop leaks
7. Above floor design minimizes maintenance requirements
8. A clean system - no leaky hydraulic lines or greasy drives
9. Smooth, quiet room movement - no jumping or jerking
10. It's built in the U.S.A. and backed by BAL since 1972



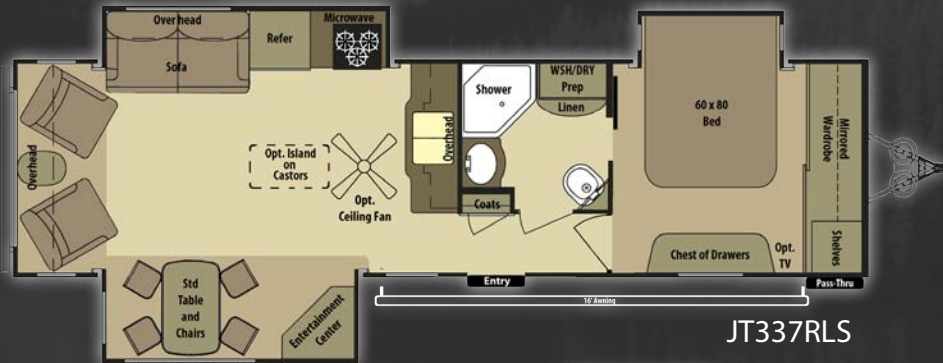
For more information please visit: <http://norcoind.com/bal/products/oem/accuslide/index.shtml>

## HEATING SYSTEM:



# Journeyer

## TRAVEL TRAILERS



|          | GVWR  | UVW  | Hitch Wt. | Axle Wt. | Gross NCC | Ext. Length | Ext. Height | Fresh Water | Gray Water | Waste | Furnace (BTU's) |
|----------|-------|------|-----------|----------|-----------|-------------|-------------|-------------|------------|-------|-----------------|
| JT337RLS | 11180 | 7840 | 780       | 7060     | 3340      | 36'         | 145"        | 85          | 57         | 41    | 35,000          |
| JT340FLR | 11995 | 9030 | 1455      | 7575     | 2965      | 36'         | 145"        | 85          | 57         | 41    | 35,000          |
| JT359FKS | 11995 | 9385 | 1410      | 7975     | 2610      | 38'         | 145"        | 85          | 82         | 41    | 35,000          |

# Visit Us @ [www.OpenRangeRV.com](http://www.OpenRangeRV.com)

- "Build Your Own"
- Detailed Floorplans & Specs
- Contact Information
- Photo Galleries
- Frequently Asked Questions
- Customer Testimonials
- Virtual 360° Videos
- Dealer Locator
- And Much More



## **PURCHASE LOCALLY**

Open Range RV strongly encourages our retail customers to purchase from their local dealership whenever possible due to the following reasons:

1) Our Dealers are, as a rule, independently owned and operated businesses. Outside of those customers they personally sold products to, they are not obligated to perform warranty service on Open Range RV products that were purchased elsewhere. There may be an occasion that the customer will be required to return to the point of purchase to satisfy warranty requirements.

2) Although many dealerships will eventually service products not purchased at their dealership, they will usually take care of their customers and other Open Range RV customers who are traveling away from their local dealer as a priority.

3) Local purchases allow a customer to establish a relationship with a dealer close to home. This relationship provides the customer with a convenient location for service and support from a "local" professional.

4) The opportunity for a thorough PDI (Pre Delivery Inspection) and product orientation is an additional benefit of buying from a local dealer. The opportunity for refresher courses or the ability to get questions answered more promptly is another additional benefit of buying from a local dealer.

5) For our Canadian customers, there are also requirements which must be met to bring an RV purchased out of the country to their home. Although not impossible, these requirements may involve such things as additional inspections, certifications, taxes and fees. The local Canadian Dealer is a professional at meeting these requirements.

6) Open Range's goal is for all RV Owners to fully enjoy their RV experience. In light of this goal, and considering the advantages of buying locally, we encourage you to be thorough when determining what product to purchase and which dealer to purchase it from as both are key to your ultimate satisfaction.

**Your Open Range Dealer:**



Open Range RV Company 3195 N. St. Rd. 5 Shipshewana, IN 46565

Phone: (260) 768-7771 - [www.OpenRangeRV.com](http://www.OpenRangeRV.com)

Due to continual research and advances, manufacturer reserves the right to change specifications, design, price, and equipment without notice, and assumes no responsibility for any error in the literature. Some items shown are not included as standard or optional equipment

©2012 Open Range RV Company, Shipshewana, Indiana

Published Date: Dec. 14<sup>th</sup>, 2012