

Lance travel trailers

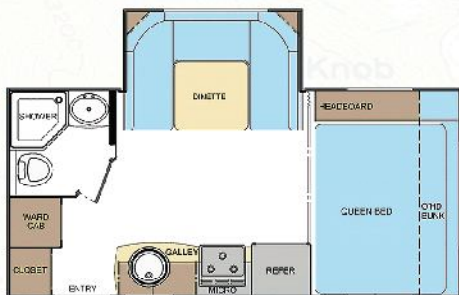
U L T R A L I G H T S E R I E S



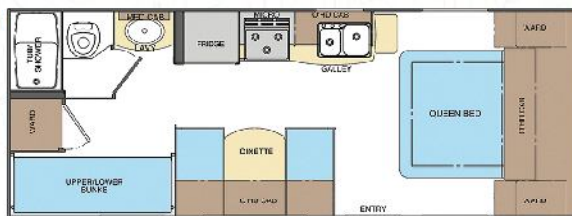
CELEBRATING A 45-YEAR LEGACY *of* QUALITY RV CRAFTSMANSHIP

Lance

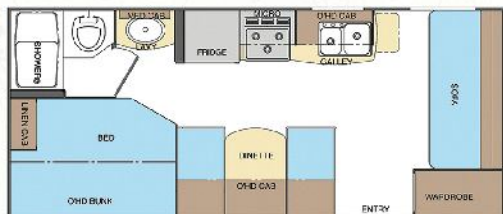
1685



2180



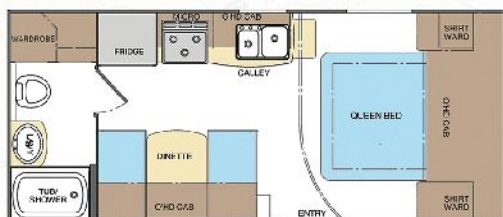
1880



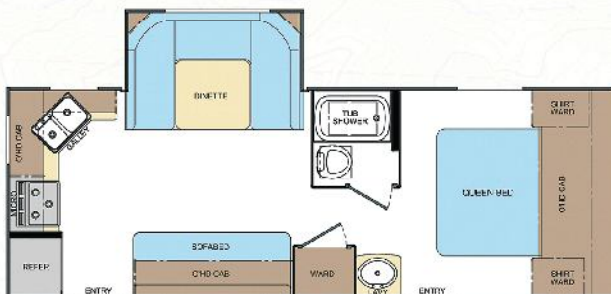
2281



1881



2285



basic tech specs

	1685	1880	1881	2180	2281	2285
Gross dry weight (pounds)	3450	3280	3220	3510	3675	4160
Hitch dry weight (pounds)	346	340	325	355	370	445
Axle weight (pounds)	3104	2940	2895	3155	3305	3715
Cargo carrying capacity (pounds)	1910	1880	1940	1950	1985	1800
GVWR (Gross Vehicle Weight Rating - pounds)	5400	5200	5200	5500	5700	6000
Interior floor length	16'3"	18'2"	18'2"	21'2"	22'6"	22'6"
Interior height	78"	78"	78"	78"	78"	78"
Exterior height exterior height with air conditioner	107" 115"	107" 115"	107" 115"	107" 115"	107" 115"	107" 115"
Exterior width	96 $\frac{3}{8}$ "	96 $\frac{3}{8}$ "	96 $\frac{3}{8}$ "	96 $\frac{3}{8}$ "	96 $\frac{3}{8}$ "	96 $\frac{3}{8}$ "
Overall exterior length	20'9"	22'8"	22'8"	25'8"	27'0"	27'0"
Holding tanks - fresh grey black (US gallons)	30 30 30	30 30 30	30 30 30	30 30 30	30 30 30	30 60 30
Propane (number of tanks x US gallons)	2 x 5	2 x 5	2 x 5	2 x 5	2 x 5	2 x 5
Two-way power mode refrigerator (cubic feet)	6	6	6	6	6	6
Furnace (BTUs - British Thermal Units)	20,000	20,000	20,000	20,000	20,000	20,000
Number of people standard trailer sleeps	5	7	4	6	6	6
Queen bed	60"x80"	-	60"x80"	60"x80"	60"x80"	60"x80"
Double bed	-	54"x75"	-	-	-	-
Bunk bed	29"x94"	29"x75"	-	Two 29"x75" beds	-	-
Dinette bed	54"x78"	40"x72"	40"x72"	40"x72"	40"x72"	54"x78"
Sofa bed	-	42"x72"	-	-	42"x68"	42"x72"

14 universal options.

High-output three-burner range with oven and cover | Microwave oven | Propane/electric/DSI (direct spark ignition) water heater | AM/FM/CD stereo with interior and exterior speakers | 19-inch LCD TV with DVD player | TV antenna | Fan-Tastic® roof vent | Chassis-mounted carrier and spare tire | Coleman®-Mach® 9000-BTU, low-profile air conditioner with wall control | Coleman®-Mach® 13,500-BTU air conditioner with wall control | Power awning | Swing-out entry assist handle | Water heater bypass and winterizing valve | Heated holding tanks



Whitewater interior

Lance 1685 "Super-slideout" – with 54"x78"
 U-shaped dinette. Overhead storage bins throughout. Truly ultralight – only 3450 pounds dry weight. Three wardrobe closets. Under-bed storage accessible from either inside or outside the coach – in addition to pass-through exterior storage. Sleeps up to five. Options specific to this model: front rockguard window, awning slideout cover, and pull-out storage tray. Universal options on inside front cover.

ultralight
3450
 dry weight



Optional pull-out storage tray

Low Gap



Lance 1880 in Red Rock interior

Lance 1880

A traditional floorplan with uncommon features. Like all

Lance travel trailers, there's no compromise on the quality of components or workmanship in the Lance 1880. With sleeping accommodations for up to seven and all the features needed for a great vacation, it's the right RV for either just a couple, or a growing family. And a variety of options add to its versatility. Options specific to this model: front rockguard window. Universal options on inside front cover.



Plenty of exterior-access storage space – large enough for a portable generator, firewood, tackle boxes – you name it.



ultralight
3280
dry weight



Come visit us at
www.LanceTrailer.com
for complete product info.



Lance 1881 in Gold Rush Interior

Lance 1881

ultralight
3220
dry weight

Lance 2281

ultralight
3675
dry weight

The Lance 1881 and Lance 2281 travel trailers are front walk-around queen bed models with similar floorplans. The Lance 2281 is about four feet longer than the 1881 to accommodate a very comfortable sofa that converts to an additional bed. In both, the large rear bath includes a roomy wardrobe and lavatory sink. And there's no shortage of storage in either one – including a large area beneath the front bed. Options for the 1881



Rear bath – looking left and straight in

include a convertible sofa/queen bed, and pull-out storage tray. Options for the 2281 include a pull-out storage tray. Universal options can be found in the inside front cover.



Lance 2281 in Whitewater Interior



Lance 2281 bedroom



Red Rock interior

Lance 2180

Twenty-one feet of comfort and convenience with sleeping for six.

Fold-up the rear bunks and there's plenty of storage for the kid's bikes or other toys – with access from a large outside door. Standard features include the six-foot double-door refrigerator and a full-length rear wardrobe. Like all Lance travel trailers, a comfortable dinette converts into a bed – with lots of storage beneath. Options specific to this model: convertible sofa/queen bed, and pull-out storage tray. Universal options on inside front cover.

ultralight
3510
dry weight

Available only in the 1881 and 2180 models is an optional convertible sofa/queen bed (option 118) – deployed using a space-saving, somersault-flip/roll-out action.



Looking back into the twin bunks and bathroom.





Gold Rush interior with optional swivel rockers

Lance 2285 Latest in the Lance travel

trailer lineup. "Super-slideout" – 54"x78" U-shaped dinette. Island (walk around) queen bed. Rear kitchen. Two entry doors. Large center-located wardrobe. Pass-through exterior storage. Under-bed storage accessible from inside the coach. Pull-out sofa standard. Sleeps up to six. Options specific to this model: swivel rockers (replaces pullout sofa), awning slideout cover, and pull-out storage tray. Universal options on inside front cover.

ultralight
4160
dry weight



Island (walk-around) queen bed with under-bed storage

Come visit us at www.LanceTrailer.com for complete product info.

Low Gap

North America's #1 camper manufacturer.

For more than 45 years, Lance has been the most famous name in truck campers. And the quality and reliability that has continued to make us #1 with campers is being applied now to our new lineup of ultralight travel trailers. You can depend on Lance, just like the tens of thousands of other satisfied Lance owners and their families before you.



The Lance factory – with more than 200 professionals working in 141,000-square-feet of custom-designed, state-of-the-art RV manufacturing and customer service facilities on a 22-acre campus in Southern California's sunny Antelope Valley.



An industry leader in RV product quality, Lance has received the RVDA's coveted **DSI Quality Circle Award** eight times.

One look and the quality is apparent. Look inside a Lance and open a cabinet door. No raw wood. No sticks. No tacked-on strips to cover-up seams. It's quality not often seen in travel trailers. Tinted windows. Deluxe upholstery. Spring door retainers. Lasting Lance quality everywhere.

Affixed to each Lance trailer is the **Silver RVIA Seal** – a metallic foil insignia certifying Lance's 100% compliance with all U.S. federal and state electrical, plumbing, heating and fire safety standards established for RVs.



Quality. Fit. Finish. How a Lance travel trailer is different – and why different is much, much better.



Super-lightweight, powder-coated chassis. ① Every Lance travel trailer superstructure is mounted on a lightweight, high-strength-engineered, powder-coated tempered steel chassis.



Torsion-bar suspension. ② Premium, heavy-duty, independent, rubber torsion-bar-suspension axles with EZ-lube wheel bearings ensure a smooth ride.



.062"-wall-thickness Alodine®-coated all aluminum welded frame construction ③ with coated steel bonding plates serve as the underlying structure of every Lance for years of reliability and outdoor fun.



Solid, high-density block foam insulation is precision-cut by a computer-controlled router – leaving no voids available for possible air intrusion.



Fully laminated and insulated floor, ceiling and fiberglass walls provide incredible strength and rigidity – and insulation against both heat and cold.



EnergyStar®-rated TPO roof. ④ An incredibly tough, seamless, marine-grade, white TPO (thermoplastic polyolefin) single-piece roof doesn't chalk, resists streaking, provides added insulation – and carries a manufacturer's 12-year warranty.



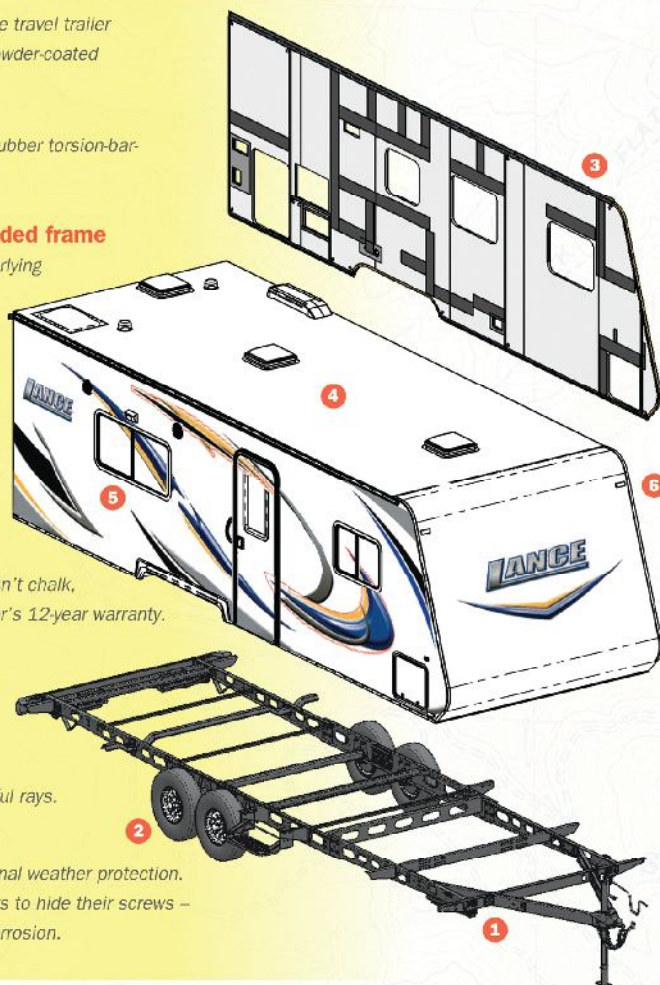
Solid wood Lite-Ply® cabinets are screwed together. No staples. No raw wood.



Tinted glass windows ⑤ reduce glare and reject the sun's harmful rays.



Solid aluminum exterior corner moldings ⑥ deliver additional weather protection. Other manufacturers use brittle vinyl insert strips on their exterior corners to hide their screws – which only serves to collect water underneath these strips and create corrosion.



©2010 Lance Camper Manufacturing Corporation (LCMC). All rights reserved. Lance, the Lance logomark and other exclusive Lance product names, marks or designations are trademarks, service marks or registered trademarks of LCMC. All other marks are property of their respective owners. All product data, graphics and photography in this brochure were as accurate as possible at press time. Subsequent refinements during the model year may be evident in the actual product. LCMC reserves the right to change prices, colors, materials, equipment and specifications without notice – as well as to add, modify or discontinue models shown in promotional materials and/or on its websites. All weights, fuel and liquid capacities are approximate and dimensions are nominal. LCMC has designed its travel trailers to provide a variety of potential uses for owners. Each model features optimum living, storage, fluid, seating and sleeping capacities. Though each owner enjoys this potential, it's that purchaser's sole responsibility to select the proper Lance travel trailer and towing equipment appropriate to their tow vehicle without exceeding safe weight operating and towing capacities. Your Factory Authorized Lance Dealer can advise you of safe operating parameters for your particular use and situation, as well as confirming prices and product specifications material to your purchase decision. Front cover shot at Mormon Rocks in San Bernardino National Forest, CA/1203 30M. Litho in USA.



Lance Camper Manufacturing Corporation | 43120 Venture Street | Lancaster California 93535-4510 USA | www.LanceTrailer.com | www.LanceCamper.com