

2001

# EMPRESS



Experience the Difference!



EMPR



If you're the kind of person that isn't satisfied with anything but the best, the Empress is for you. At Triple E, all the r

ESSIVE !



motor homes we build are engineered for excellence in quality and performance, but the Empress is in a class all by itself.



Luxury and Comfort are not an option... They're Standard.

## THE 2001 EMPRESS



If you're going to own a first class motor home, it should look like a first class motor home. With the Empress, there is absolutely no doubt. Everything about the dramatic exterior graphics and sleek design make it obvious that you're travelling, not only in style, but in luxurious comfort.

The simple fact is that the Empress has been designed and engineered to be the best motor home on any road anywhere. Whether it's an all-too-short vacation or a permanent way of life, motor home travel just doesn't get any better than this. Visualize luxurious comfort, up-to-the-minute style and all the features, options and amenities you could wish for rolled up into one impressive package.

That's the Triple E Empress.



*The Empress slideout dining room not only adds appreciated space, it also has thoughtful features such as extra overhead storage and a large dining room window with decorator window coverings and accents.*





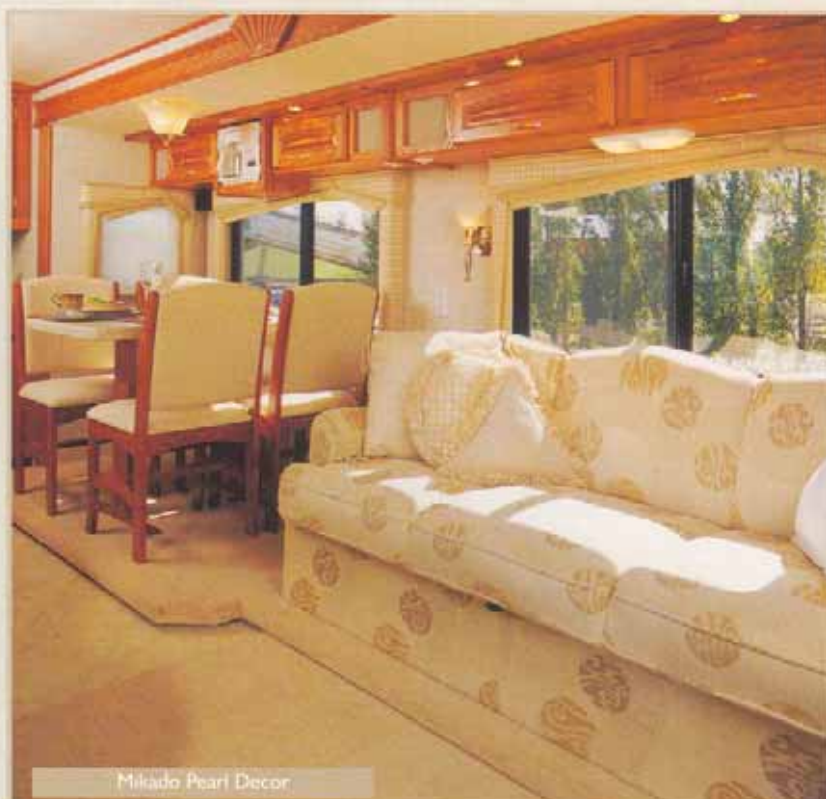
Careful attention to detail means that your Empress motorhome is luxurious, but functional. Every piece of furniture, every available space is thoughtfully used to make storage plentiful and most of all accessible.

Go ahead, take it with you and keep it out of sight, but keep it handy with the storage spaces like the one above. Or, in the bedroom there's enough closet space for his and hers with a wall to wall, full length mirrored closet door, standard on the A3802FW and the A3805W and optional on the A3801G, A3803E, A3804G and A3806E.

You'll never run out of room, and you'll be able to take all the things along that will custom make your Empress your second home.



To help you enjoy your relaxation time, we've made the remote control color TV in the bedroom a standard feature.



*The living and lounge area combine to make an open and spacious entertaining area with lots of comfortable seating, just like if you were at home.*



*The optional slide out wardrobe with full length mirrors (standard on A3802FW and A3805FW) increases the feeling of spaciousness and provides extra room.*



## Every room will make you forget you're in a motorhome ...



A first class motorhome should feel luxurious in every room and the bathroom is no exception. A neo-angle shower or garden tub, raised oak cabinetry and plenty of room means that you will feel like you're at home.



*Top: A slideout, dash-mounted computer tray for the passenger side is offered as an option.*



*Top: Standard Empress entertainment systems include a 21" remote TV, VCR and video system master control.*

*Left and right: There's plenty of elbow room in the Empress driver's cockpit and the automotive instrument panel is easy to adjust to.*



*Slide out the floor as the above pictures demonstrate and you've just added 4 square feet to your living room. Aesthetically pleasing and functional.*



## Lots of Storage with Utilities tucked out of the way, but Easy to get to ...



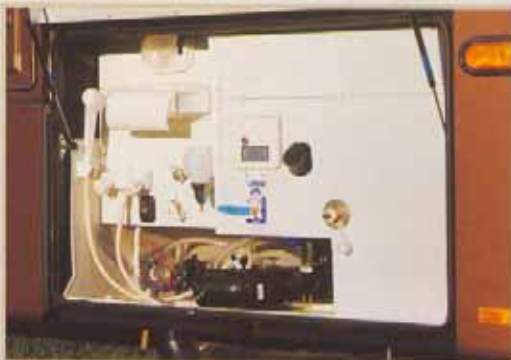
Storage and accessibility are also standard on the Triple E Empress. Ingenuity of design is incorporated into every space.

The generator compartment is located at the front of the Empress in an air powered slideout. Easy to operate and easy to get at.



Ample storage for your golf clubs, tools, coolers, extra chairs or whatever you want to take with you is easy to get at, so your things are never far from your reach.

Relax outdoors and still enjoy your favorite TV program or music with the outdoor entertainment options available on the 2001 Empress.



## Experience the Difference!



# EMPRESS FEATURES

## VEHICULAR

Air Brakes c/w Slack Adjusters	S
Air Horns	S
Airbag Suspension c/w Bilstein Shocks	S
Allison 3000 MH Six Speed Automatic Transmission c/w Lock Up	S
Alternator 160 Amp	S
Aluminum Wheels	S
Automatic HWH Levelling System	S
Automotive Undercoating	S
Battery Boost Switch	S
Battery Selector Switch for Radio	S
Block Heater	S
Chassis Air Conditioner	S
Chassis - Freightliner c/w Caterpillar 330 HP Turbo Diesel (XC Series)	S
Raised Rail - 242" Wheel Base (GVWR 27,410 lbs)	S
Cockpit Ventilating Fans	S
Cruise Control	S
Driver Door c/w Power Window	S
Driver/Passenger Floor Mats	S
Driving Lamps	S
Exhaust Brake - Jacobson	S
Factory P.D.I.	O
Halogen Headlamps	S
Heated Remote Power Mirrors	S
High Mount Stoplight - LED Long Life	S
Integrated Fiberglass Bumper - Steel Reinforced	S
Power Driver's Sun Visor	O
Radial Tires Michelin 255/80 R22.5-XRV	S
Rust Protection	O
Tilt/Telescopic Steering Wheel	S
Trailer Hitch Receiver w/wiring - Class III	S
Transmission Cooler (Freightliner Supplied)	S
Wet Arm Windshield Wipers c/w Intermittent Function	S

## CONSTRUCTION

Aluminum Baggage Doors c/w Gas Struts and Slam Latches	S
Aluminum Baggage Doors c/w Gas Struts under slide out (slide models)	S
Domed EPDM Roof	S
Gelcoat Fiberglass Front & Rear Masks	S
Lined and Lighted Baggage Compartments	S
Steel Cab Floor, Firewall, and Dash Structure	S
Thermal Break Dual Pane Window System	S
Vacuum Bonded, Aluminum Framed, Insulated Sidewall & Roof Construction	S
Vacuum Bonded Gelcoat Fiberglass Sidewalls	S
Vacuum Bonded, Steel Frame and Insulated Floor Construction	S

## SYSTEMS

110V/12V Receptacles in Baggage Compartment (Freezer Prep)	S
50 Amp Electrical Service with EMS	S
2000 Watt Inverter c/w 100 Amp Charger	S
3 Way Water Pump Switch	S
40,000 BTU Furnace c/w Electronic Ignition	S
4X 6V Deep Cycle Auxiliary Batteries c/w Slide Out Battery Tray	S
Alarm System c/w Motion Detectors	O
Central Vacuum	S
Bi-Directional Isolator Relay Delay (BIRD) battery charging	S
Black Tank Flush System	S
Dual Ducted Roof Air Conditioning (2) 13,500	S
Easy Access Propane Tank	S
Electronic Battery Disconnect (Coach Batteries)	S
Electronic CO Detector	S
Electronic Ignition Gas/Electric/Motoraid Water Heater (10 Gallon)	S
Electronic Propane Detector	S
Electronic Smoke Detector	S
Enclosed Heated Fresh Water & Waste Holding Tanks	S
Full Height Utility Module Access Door	S
Generator Ready Package	S
Generator 7.5 KW Onan Quiet Diesel (With Air Assist Slide Out)	O
Gravity Fill Fresh Water Tank	S
Rear Auxiliary Automotive Heater with Electric Valve (1 Bedroom, 1 Tank & Service Module)	S
Rearview Camera/Monitor - Color - Mounted In Dash	S
Solar Panel Prewire	O
Swing Out Underbody Sewer Hose Holder	S
Washer/Dryer (vented)	O
Winterization System c/w Antifreeze Pickup System	S

## EXTERIOR

Concealed Locking Fuel Fill Access on Both Sides	S
Deadbolt Door Lock	S
Deluxe Patio Lights (2)	S
Docking Lamps (2 side, 2 rear)	S
Electric Retractable Entry Step	S
Entry and Driver Assist Handles	S
Exterior Color - Cedar Sands	O
Exterior Color - Mocha	S
Exterior Ladder c/w Detachable Lower Section	O
Exterior Shower	S
Painted Exterior Graphics	S
Screened Entry Door	S
Slide Out Freezer 1.38 Cu. Ft. (AC/DC)	O

### GVWR

**GROSS VEHICLE WEIGHT RATING** means the maximum permissible weight of this motorhome. The GVWR is equal to or greater than the sum of the unloaded vehicle weight (UVW) plus the net carrying capacity (NCC).

### UVW

**UNLOADED VEHICLE WEIGHT** means the weight of this motorhome as built at the factory with full fuel, engine oil, and coolants. The UVW does not include cargo, fresh water, LP gas, occupants, factory or dealer installed accessories.

### NCC

**NET CARRYING CAPACITY** means the maximum weight of all occupants including the driver, personal belongings, food, fresh water, LP gas, tools, tongue weight of towed vehicle, factory or dealer installed accessories, etc., that can be carried by this motorhome. (NCC is equal to or less than GVWR minus UVW.)



**NOTE:** Please see your dealer for weights of factory installed options.



INTERIOR	
Automotive "Soft Touch" Headliner	S
Booth Dinette in Lieu of Table & Chairs	O
Canadian Maple Cabinetry with Maple Fridge Inserts	O
Cloth Jackknife Sofa	S
Courtesy Floor Lamps	S
Dash Mounted Computer Tray	O
Day/Night Pleated Shades c/w Bedroom Black Out	S
Decorative Bedspread c/w Throw Pillows	S
Decorative Mirrors	S
Domed Interior Ceiling	S
Driver and Passenger Side Roller Blinds	S
Dry Chemical Fire Extinguisher	S
Easy Underbed Storage/Engine Access c/w Gas Struts	S
Hide-A-Bed (A3802FW, A3803F, only with Love Seat option)	O
Insulated Vent Covers	S
Keylock Safebox	S
Love seat in Lieu of J-Sofa	O
Mattress Upgrade	O
Oak Wall Mount Table and Chairs (A3801G & A3804G)	S
Pneumatic Powered Front Step Cover (Front Entry Models)	S
Residential Quality Queen Bed Mattress (60"x80")	S
Sculpted Oak Panel Cabinet Doors	S
Skylight in Living Area	O
Solid Surface Table c/w Oak Chairs (A3802, A3803, A3805, A3806)	S
Slide Out Drawer Option in Laundry Cabinet (n/a with Washer/Dryer Option)	O
Skylight - Shower Compartment	S
Southco Snap Locks on Galley, Lavatory Overhead Cabinets and Large Wardrobe Doors	S
Thermostatically Controlled Fan in Livingroom	S
Travel Lock Drawers	S
Ultra Leather J-Sofa	S
Ultra Leather Power Driver and Passenger Captain Chairs with Integral Seatbelts	S
Ultra Leather Recliner w/Refreshment Center c/w Flip Table in Lieu of J-Sofa	O
Wardrobe Slideout in Bedroom w/ Mirrored Closet Doors (A3802FW & A3805FW)	S
Wardrobe Slideout in Bedroom w/ Mirrored Closet Doors (A3801G, A3803F, A3804G & A3806F)	O
Wall to Wall Carpeting (Living Area)	S

ENTERTAINMENT	
A/C Video Cassette Recorder	S
AC/DC Bedroom TV c/w Remote	S
AM/FM CD In Dash Stereo	S
A/C 21" Colour TV c/w Remote Control	S
CB Antenna	O
DHS Mobile Theatre System w/ Premium AM/FM CD Stereo w/ 8 stack CD Changer	O
Exterior (Baggage Compartment) Am/Fm CD Stereo	O
Exterior 21" AC TV in Baggage Compartment c/w Slide Out Tray	O
Exterior Cable TV and Telephone Hook Up	S
Premium AM/FM Cassette Stereo with 8 Stack CD Changer	O
Premium AM/FM-CD Stereo c/w 8 Stack CD Changer and Amplifier	O
Satellite Dish Prewire	O
AM/FM CD Stereo in Bedroom c/w Alarm Clock	S
TV Antenna c/w Booster	S
Video System Master Control	S

LAVATORY	
Aurora China Toilet c/w Water Saver with Sprayer	S
Ceramic Tile Flooring Installed at 45 Degree angle	S
Deluxe Faucets	S
Enclosed Fiberglass Shower (A3801G, A3803F, A3804G & A3806F) or Garden Tub (A3802F & A3805F)	S
Prep Package for Washer/Dryer	S
Solid Surface Counter and Basin	S
Thermostatically Controlled Fan in Bathroom	S

GALLEY	
Ceramic Tile Flooring	S
Deluxe Faucets	S
Coffee Maker	S
10 cu. ft. 2 Door Fridge Gas/Electric c/w Ice Maker (Over/Under)	S
Gas Oven	O
Microconvection Oven c/w Range Hood (OTR)	S
Sculptured Oak Panel Fridge Inserts	S
Recessed Solid Surface Sink	S
Recessed Bi-fold Range Cover	S
Side by Side 12 Cu. Ft. Refrigerator c/w Ice Maker Gas Electric	O
Solid Surface Countertop c/w Matching Sink Covers Cutting Board	S
Recessed Cooktop c/w High Output Burner (Sealed Burners)	S
Water Purifier	S

EMPRESS SPECIFICATIONS		Freightliner Chassis XC-23RDX		330 HP Turbo Diesel Engine	
	A3801G & A3804G	A3801GW & A3804 GW	A3802FW & A3805FW	A3803F & A3806F	A3803FW & A3806FW
GVWR - lbs (kg)	27410 (12433)	27410 (12433)	27410 (12433)	27410 (12433)	27410 (12433)
UVW - lbs (kg)	21714 (9870)	TBD	23060 (10482)	22264 (10120)	TBD
NCC - lbs (kg)	5696 (2589)	TBD	4350 (1977)	5146 (2339)	TBD
Wheelbase - inches (mm)	242" (6147)	242" (6147)	242" (6147)	242" (6147)	242" (6147)
Length - feet(mm)	38' (11582)	38' (11582)	38' (11582)	38' (11582)	38' (11582)
Width - feet(mm)	8'4" (2534)	8'4" (2534)	8'4" (2534)	8'4" (2534)	8'4" (2534)
Height Incl. A/C - feet (mm)	11'11" (3632)	11'11" (3632)	11'11" (3632)	11'11" (3632)	11'11" (3632)
* Water Tank Cap. - gal (l)	102 (386)	102 (386)	102 (386)	102 (386)	102 (386)
Holding Tank Cap. (grey) - gal (l)	57 (216)	57 (216)	57 (216)	57 (216)	57 (216)
Holding Tank Cap. (black) - gal (l)	57 (216)	57 (216)	57 (216)	57 (216)	57 (216)
Fuel Capacity - gal (l)	100 (378)	100 (378)	100 (378)	100 (378)	100 (378)
Propane Capacity - gal (l)	32(121)	32(121)	32(121)	32(121)	32(121)
* - Includes 10 gallon Water Heater		(All Capacities in U.S. Gallons)			



## QUALITY CONSTRUCTION TECHNIQUES

The Triple E Empress Motorhome is an example of what can be achieved by combining first class materials with close tolerance, quality controlled construction.

Top-of-the-line in every respect, the Empress incorporates design and construction born of countless hours of planning, testing and re-testing. The result is a motor home that's second to none. Where your safety and comfort is concerned, we simply don't allow guesswork. And that applies to the systems, components, materials and overall construction. Triple E's exacting quality assurance standards are some of the most stringent in the industry today.

The foundation of a truly excellent motor home is its chassis. On the Empress, it's the Freightliner - rugged, durable, tested and proven under the most extreme conditions. We have built you a home on wheels on this rock solid foundation. Just like any home, the major considerations are long lasting beauty coupled with the ability to stand up to any weather conditions. Climate control air conditioning ducts are all housed in the domed roof, and so you can operate your Empress year-round. All under floor fluid systems are enclosed and heated.

The designer interior decors are a mixture of style and functionality. They incorporate quality fabrics that are made to handle the wear and tear of RVing and meet or exceed all current flame retardant standards. The venetian blinds, which control light and provide privacy, are accented by the designer window treatments.

All Triple E products are built to CSA (Canadian Standards Association) or RVIA (Recreational Vehicle Industry Association) standards. We were one of the first RV manufacturers to obtain the ISO 9002 certification - your assurance of the careful construction and quality materials that are part and parcel of every Triple E unit.



## INTERIOR DECORS

Along with the many choices of floorplans, you are also given the choice of three distinct and tasteful interior design schemes.



**Glacial Blue**



**Mikado Pearl**



**Bronze Suede**



# EMPRESS 2001 FLOORPLANS

A3801G



A3802FW



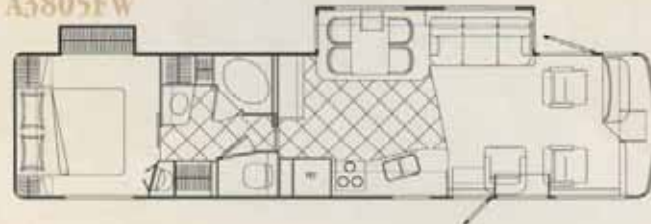
A3803F



A3804G



A3805FW



A3806F



'Mocha Exterior' Standard



Make sure  
you visit our website at  
[www.tripleerv.com](http://www.tripleerv.com)



RECREATIONAL VEHICLES

## 2 YEAR WARRANTY

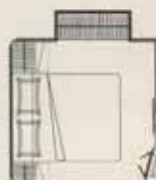
*Triple E is proud to offer a 2 Year Structural Warranty as well as a 2 Year Warranty on most major components. Please see your dealer for further details.*



This combination of labels assures the purchaser that the manufacturer has met or surpassed CSA-CRVA-RVIA standards covering electrical services, gas services, plumbing services, and vehicular safety.

Product improvement is a continuing process at Triple E Recreational Vehicles. Thus we reserve the right to change the specifications on any and all products without prior notice; errors and omissions excepted. Triple E Recreational Vehicles is under no obligation to undertake modification to units manufactured prior to changes in specifications.

Embassy motorhomes exceed 96 inches in width. In some states 96 inches is the maximum width of vehicles travelling some or all state roads. It is the responsibility of the owner to be familiar with the road usage laws of the states in which you travel.



Empress  
Wardrobe  
Slide Option