



EMBASSY

2002



EMBASSY 2002

*Your lifestyle just
took a turn for the better*



LOSE YOURSELF IN THE JOURNEY

NO DEADLINES, NO SCHEDULES, NO RUSH,
BECAUSE YOU'RE IN THE DRIVER'S SEAT.
SO INSIST ON STAYING UNTIL YOU CATCH A
TROPHY FISH, GO OUT OF YOUR WAY TO FIND
A CHALLENGING GOLF COURSE, OR FOLLOW
SOME NEW FRIENDS ON THEIR ROUTE.
ANYTHING'S POSSIBLE WHEN YOU HAVE
THE DRIVE.



A34F shown with Silver Birch Decor



Extensive storage in the galley area provides a place for everything.



Hidden storage compartments add valuable space and convenience.



Exterior storage is well-considered and plentiful.

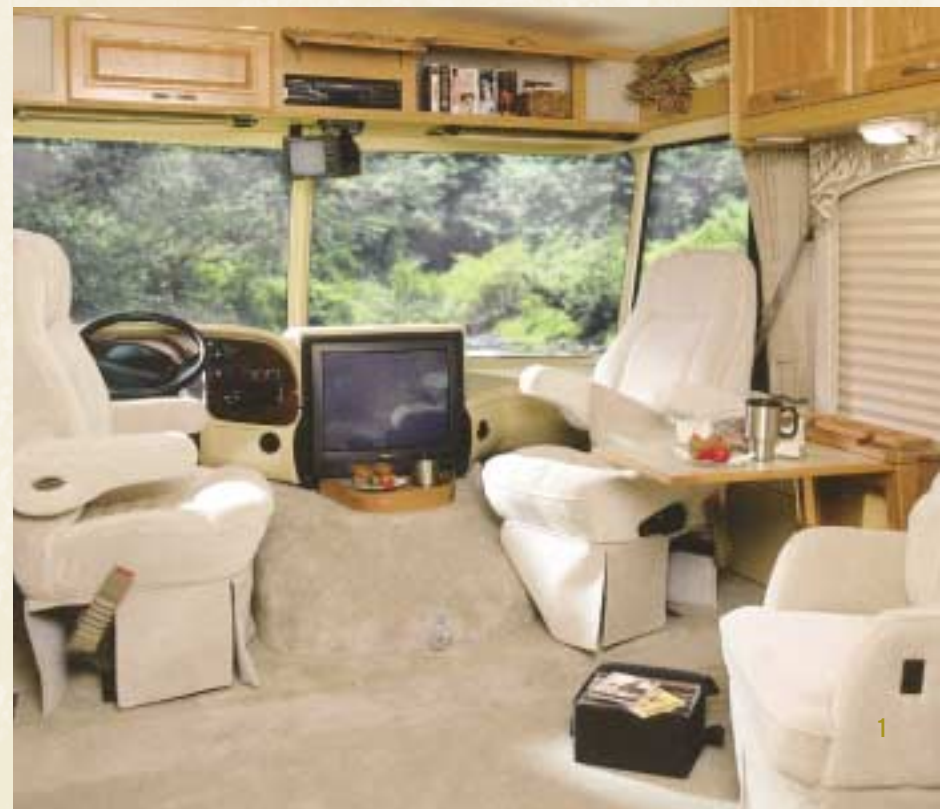
Whether you chart your own course or let the road take you where it will, bring a little piece of home with you in the 2002 Embassy. Combining function and comfort, you'll truly appreciate the care our designers take to create an environment that's as complete as your home yet luxurious enough to remind you that you're on vacation.

The Embassy's bold, sleek exterior houses an inviting interior – in your choice of décor and layout. Consider adding to the already numerous standard features with thoughtful optional details such as an outdoor shower, coffee maker, and bedroom television to further enhance your experience.

In addition to the basic Embassy, there is an optional XL package available on all Embassy models to provide three-season comfort. Thermal pane windows, enclosed, insulated and heated holding tanks, and a rear auxiliary heater make the Embassy XL impervious to spring and fall chills.



The Embassy is equipped with Filon filoplated smooth exterior sidewalls. These panels are extremely dent and weather resistant and keep your coach looking its best for years



THE LOOK YOU WANT

ALONG WITH YOUR CHOICE OF FIVE FLOOR PLANS AND A HOST OF OPTIONS, FURTHER CUSTOMIZE YOUR COACH WITH ONE OF THREE DISTINCT INTERIOR DESIGN SCHEMES. SELECTED BY A GROUP OF PROFESSIONALS, THE THREE COMBINATIONS SKILLFULLY COORDINATE UPHOLSTERY, CARPETING, AND WINDOW TREATMENTS.



TRANQUIL BLUE



SILVER BIRCH



WOODLAND PLUM

THE EMBASSY IS MADE FOR SPACIOUS LIVING AND ACCOMMODATES ENTERTAINING WITH STYLE. INVITING, CLIMATE CONTROLLED, AND WELL-PLANNED, IF DESIRED YOU WILL HAVE NO SHORTAGE OF VISITORS TO YOUR "MOBILE" HOME.



THE SPACE YOU NEED

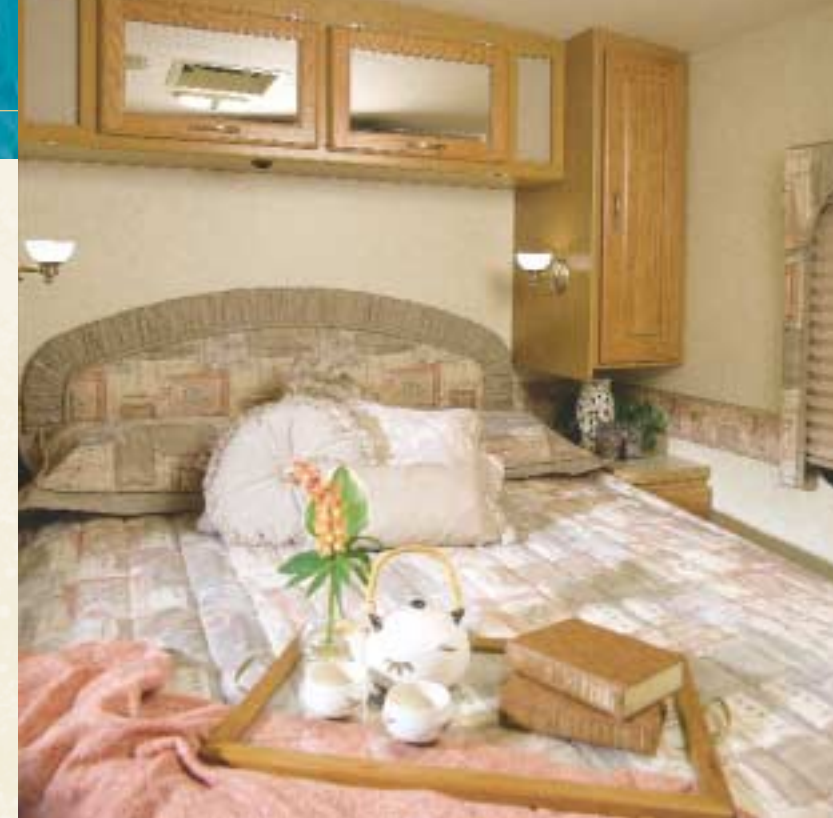
The living area's durable upholstery is vital as this may be the most used space in the coach. A VCR is an option, but the 20-inch TV is standard equipment, as is the CD in-dash stereo.

The galley makes meal preparation easy. Range covers and cutting board sink covers allow extra counter space when needed. Accented throughout with raised oak cabinetry, the kitchen's two-door fridge, three burner stove, oven, and microwave provide you with the ingredients for success.

You'll sleep well as the Embassy's master bedroom includes an inner spring mattress and wall-to-wall carpeting for extra soundproofing. Consider an optional TV in the bedroom or a thermostatically controlled ceiling fan.

The Embassy allows you to bring along all the provisions you'd like thanks to the ample interior and exterior storage compartments.

Embassy is a solid choice for everything you need and want in a value priced motorhome.




There's no lack of conveniences in our well appointed galley. An optional coffeemaker completes the picture.



The bathroom is complete and functional. Revitalize in the full size shower to start a new day of adventure.

STANDARDS AND OPTIONS

S = Standard O = Option  New for 2002

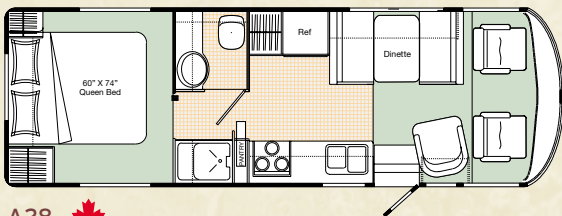
	A28	A29	A31	A30G	A34F
VEHICULAR					
Airbag Assist Rear Suspension	O	O	O	O	O
Automotive Undercoating	S	S	S	S	S
Auxiliary Coach Batteries (2 x 12Volt)	S	S	S	S	S
Battery Boost Switch	S	S	S	S	S
Battery Disconnect Switch	S	S	S	S	S
BIRD Bi-Directional Isolator Relay Delay Battery Charging	S	S	S	S	S
Block Heater	S	S	S	S	S
Chassis Air Conditioning	S	S	S	S	S
Chassis- Ford V-10, 6.8L V10 Triton - 18,000 lb. GVW - 178" Wheelbase	S	-	-	-	-
Chassis- Ford V-10, 6.8L V10 Triton - 18,000 lb. GVW - 190" Wheelbase	-	S	S	S	-
Chassis- Ford V-10, 6.8L V10 Triton - 20,500 lb. GVW - 228" Wheelbase 	-	-	-	-	S
Chassis- Workhorse Custom Chassis - 18,000 lb. GVW	O	O	O	-	-
Cruise Control	S	S	S	S	S
Four Speed Automatic Transmission c/w Overdrive	S	S	S	S	S
High Mounted Stoplight - LED Long Life	S	S	S	S	S
Hydraulic Leveling Jacks with Joystick Control	O	O	O	S	S
Hydraulic Slide Out System	-	-	-	S	S
Radial Tires	S	S	S	S	S
Rust Protection 	O	O	O	O	O
Spare Tire and Wheel	O	O	O	O	O
Steel Reinforced Rear Bumper	S	S	S	S	S
Tilt Steering Wheel	S	S	S	S	S
Trailer Hitch Receiver c/w Wiring and 7 Pole Plug - Class III	S	S	S	S	S
Transmission Cooler	S	S	S	S	S
Wet Arm Windshield Wipers c/w Intermittent	S	S	S	S	S
Wheel Covers	S	S	S	S	S
Wheel Simulators	O	O	O	O	O
CONSTRUCTION					
Domed EPDM Roof	S	S	S	S	S
Galvanized Luggage Compartments c/w Carpet Base	S	S	S	S	S
Gelcoat Fiberglass Front & Rear Masks	S	S	S	S	S
Radius Slider Windows in Living, Galley, & Bedroom Area	S	S	S	S	S
Rain Gutters c/w Down Spouts 	S	S	S	S	S
Steel Cab Floor, Firewall and Dash Structure	S	S	S	S	S
Tinted Windows - Screened	S	S	S	S	S
Vacuum Bonded Aluminium Framed Insulated Roof & Sidewall Construction	S	S	S	S	S
Vacuum Bonded FRP "Filon" Sidewalls	S	S	S	S	S
Vacuum Bonded Steel Framed Insulated Floor Construction	S	S	S	S	S
EXTERIOR					
Deadbolt Door Latch	S	S	S	S	S
Electric Entry Step	S	S	S	S	S
Entry Assist Handle	S	S	S	S	S
Exterior Shower	O	O	O	O	O
Extra Large Exterior Storage	S	S	S	S	S
Flush Exterior Baggage Doors c/w Locks 	S	S	S	S	S
Painted Skirts	O	O	O	O	O
Patio GFI Receptacle	S	S	S	S	S
Porch Light	S	S	S	S	S
Power Cord 30 Amp.	S	S	S	S	S
Roof Rack & Ladder	O	O	O	O	O
Screened Entry Door	S	S	S	S	S

	A28	A29	A31	A30G	A34F
INTERIOR					
Automotive "Soft Touch" Headliner	S	S	S	S	S
Decorative Bed Spread and Throw Pillows	S	S	S	S	S
Delete Living Area Carpet Rearward of Driver's Seat	O	O	O	O	O
Dual Roller Glide Drawers c/w Travel Locks	S	S	S	S	S
Fabric Wrapped Deluxe Headboard 	S	S	S	S	S
Innerspring Coil Mattress	S	S	S	S	S
Pleated Shades	S	S	S	S	S
Raised Oak Cabinet Doors	S	S	S	S	S
Thermostatically Controlled Ceiling Fan (Bedroom)	O	O	O	O	O
Venetian Blinds in Galley	S	S	S	S	S
Wall Borders in Galley & Bedroom Areas	S	S	S	S	S
Wall to Wall Carpeting in Living & Bedroom Areas	S	S	S	S	S
FURNITURE					
Booth Dinette	S	S	S	S	S
Cocktail Chair	S	-	S	-	S
Cocktail Chair with Flip Table	-	-	-	-	S
Cocktail Chairs (2) c/w Flip Table	-	S	-	-	-
Free Standing Table & Slat Back Chairs	-	-	-	-	O
Hide-A-Bed in Lieu of Jackknife Sofa	-	-	-	-	O
Jackknife Sofa	-	-	S	S	S
Jackknife Sofa in Lieu of Cocktail Chairs	-	O	-	-	-
Jackknife Sofa in Lieu of Dinette	O	-	-	-	-
Reclining Driver's & Passenger's Swivel Bucket Seats	S	S	S	S	S
Twin Beds	O	O	O	O	O
GALLEY					
Bi-fold Range Cover	S	S	S	S	S
Coffee Maker	O	O	O	O	O
Cutting Board Sink Cover	S	S	S	S	S
Deluxe Fridge Inserts 	O	O	O	O	O
Electronic Ignition Water Heater	S	S	S	S	S
Laminate Counter w/ Acrylic Sink	S	S	S	S	S
Microwave Oven	S	S	S	S	S
Power Range Hood c/w Monitor Panel and Light	S	S	S	S	S
Three Burner Range Oven c/w High Output Burner	S	S	S	S	S
Two Door Fridge - LP/Electric (6 cu. ft.)	S	S	S	S	S
Two Door Fridge - LP/Electric (8 cu. ft.) 	O	O	O	O	O
LAVATORY					
Folding Shower/Tub Door	S	S	S	-	S
Marine Toilet	S	S	S	S	S
Neo-Angle Shower with Glass Doors	-	-	-	S	-
Power Bath Vent	S	S	S	S	S
Skylight in Shower	O	O	O	O	O
ENTERTAINMENT					
A/C 20" Color TV c/w Remote Control	S	S	S	S	S
A/C Video Cassette Recorder	O	O	O	O	O
AC/DC Bedroom TV c/w Remote in Oak Cabinet	O	O	O	O	O
AM/FM Cassette Stereo with 8 Stack CD Changer	O	O	O	O	O
AM/FM CD In Dash Stereo	S	S	S	S	S
AM/FM In Dash Cassette Stereo	O	O	O	O	O
CB Antenna	O	O	O	O	O
Exterior Cable TV & Telephone Hook Up	S	S	S	S	S
TV Antenna c/w Booster	S	S	S	S	S

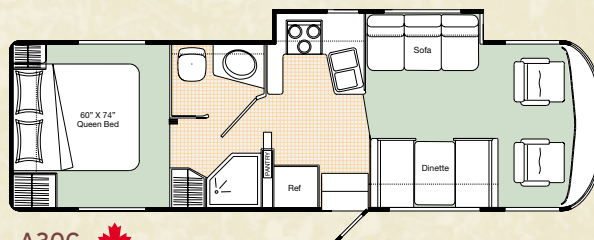
SPECIFICATIONS

	A28	A29	A31	A30G	A34F		A28	A29	A30G	A31	A34F
SYSTEMS						FORD CHASSIS					
120 Volt/12 Volt/55 Amp Converter c/w Charger	S	S	S	S	S	GVWR - lbs (kg)	18000(8164)	18000(8164)	18000(8164)	18000(8164)	20500(9298)
4.0 KW Generator	O	O	O	O	O	UVW - lbs (kg)	12643(5735)	12838(5823)	13889(6300)	13180(5977)	15166(6879)
Dry Chemical Fire Extinguisher	S	S	S	S	S	NCC - lbs (kg)	5357(2429)	5162(2341)	4111(1864)	4820(2187)	5334(2419)
Dual Ducted 2 x 13,500 Roof Air Conditioner c/w Selector Switch	-	-	-	-	O	Engine	6.8L V10 Triton	6.8L V10 Triton	6.8L V10 Triton	6.8L V10 Triton	6.8L V10 Triton
Ducted for Roof Air Conditioner	S	S	S	S	S	Transmission	4R100 4 SPD auto w/OD	4R100 4 SPD auto w/OD	4R100 4 SPD auto w/OD	4R100 4 SPD auto w/OD	4R100 4 SPD auto w/OD
Electronic Smoke, LP and CO Detectors	S	S	S	S	S	WORKHORSE CUSTOM CHASSIS (WCC) (optional)					
Forced Air Furnace - 35,000 BTU	S	S	S	S	S	GVWR - lbs (kg)	18000(8164)	18000(8164)	N/A	18000(8164)	N/A
Generator Ready Package	O	O	O	O	O	UVW - lbs (kg)	12143(5508)	12293(5576)	N/A	12725(5772)	N/A
Pre-wire for Rearview Camera/Monitor	S	S	S	S	S	NCC - lbs (kg)	5857(2656)	5707(2588)	N/A	5275(2392)	N/A
Rearview Camera/Monitor - B&W	O	O	O	O	O	Engine	GM 8.1L V8 Vortex	GM 8.1L V8 Vortex	N/A	GM 8.1L V8 Vortex	N/A
Roof Air Conditioner - 13,500 BTU	O	O	O	O	O	Transmission	Hydra-matic 4L80E	Hydra-matic 4L80E		Hydra-matic 4L80E	
Roof Air Conditioner - 15,000 BTU	O	O	O	O	O	Wheelbase - inches (mm)	178(4521)	190(4826)	190(4826)	190(4826)	228(5791)
Under Floor Mounted LP Tank	S	S	S	S	S	Length - feet (mm)	28'3(8611)	29'3(8915)	30'8(9345)	31'(9450)	34'2(10425)
Factory PDI	O	O	O	O	O	Width - feet (mm)	8'4(2534)	8'4(2534)	8'4(2534)	8'4(2534)	8'4(2534)
SPECIAL OPTION PACKAGE(S)						Height Incl. A/C - feet (mm)	11'3(3428)	11'3(3428)	11'3(3428)	11'3(3428)	11'3(3428)
XL PACKAGE INCLUDES:	O	O	O	O	O	* Water Tank Cap. - gal (l)	76(285)	76(285)	76(285)	76(285)	76(285)
Enclosed, Insulated and Heated Holding Tanks						Holding Tank Cap. - gal (l)	78(295)	78(295)	78(295)	78(295)	78(295)
Light Package in Baggage Compartments						Fuel Capacity - gal (l)	75(284)	75(284)	75(284)	75(284)	75(284)
Rear Automotive Auxiliary Heater						Propane Capacity - gal (l)	25.3(95.8)	25.3(95.8)	25.3(95.8)	25.3(95.8)	25.3(95.8)
Thermal Pane Windows						* - Includes 6 gallon Water Heater					
						(All Capacities in U.S. Gallons)					

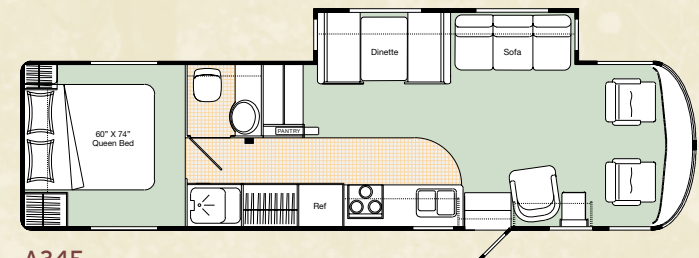
FLOORPLANS



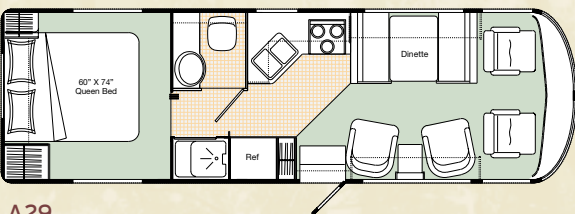
A28



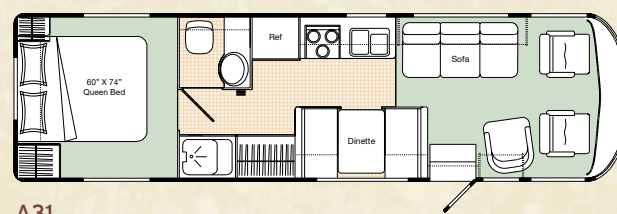
A30G



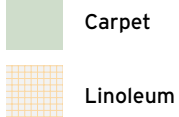
A34F



A29



A31



New for 2002

Product improvement is a continuing process at Triple E Recreational Vehicles. Thus we reserve the right to change specifications on any or all products without prior notice; errors and omissions excepted. Triple E Recreational Vehicles is under no obligation to undertake modification to units manufactured prior to changes on specifications.

GVWR

GROSS VEHICLE WEIGHT RATING means the maximum permissible weight of this motorhome. The GVWR is equal to or greater than the sum of the unloaded vehicle weight (UVW) plus the net carrying capacity (NCC).

UVW

UNLOADED VEHICLE WEIGHT means the weight of the motorhome as built at the factory with full fuel, engine oil, and coolants. The UVW does not include cargo, fresh water, LP gas, occupants, factory or dealer installed accessories.

NCC

NET CARRYING CAPACITY means the maximum weight of all occupants, including the driver, personal belongings, food, fresh water, LP gas, tools, tongue weight of towed vehicle, factory and dealer installed accessories, etc., that can be carried by this motorhome. (NCC is equal to or less than GVWR minus UVW.)

NOTE: Please see your dealer for weights of factory installed options.

TRIPLE E QUALITY

A Triple E Embassy Motorhome is a combination of first-class materials and quality controlled construction.

Built with a solid foundation, integrity is never compromised – inside and out.

Exteriors are virtually maintenance free and abrasion resistant. The domed roof allows for quick water run-off and an EPDM membrane both serves to protect against leaks and contributes to energy-efficiency.

Cabinetry is constructed with screws rather than staples to ensure structural integrity and durability. Both strong and moisture repellent, the solid oak doors are a front to ample storage space.

Designer interior decors are a mixture of style and functionality – with quality fabrics developed to handle years of wear while meeting or exceeding flame retardant standards.

All Triple E products are built to CSA (Canadian Standards Association) or RVIA (Recreational Vehicle Industry Association) Standards. Triple E was one of the first RV manufacturers to obtain the ISO 9002 certification – your assurance of the careful construction and high quality materials that are part and parcel of every Triple E Recreational Vehicle.



MAKE SURE YOU VISIT OUR WEBSITE AT www.tripleerv.com



P.O. Box 1230, Winkler, MB
Canada R6W 4C4
Tel: (204) 325-4361
Fax: (204) 325-5241
www.tripleerv.com

Experience the Difference

Triple E is proud to offer a

2 YEAR LIMITED WARRANTY

on structure as well as most major components.
Please see your dealer for further details.



This combination of labels assures the purchaser that the manufacturer has met or surpassed CSA-CRVA-RVIA standards covering electrical services, gas services, plumbing services, and vehicular safety.

Embassy motorhomes exceed 96 inches in width. In some states 96 inches is the maximum width of vehicles travelling some or all state roads. It is the responsibility of the owner to be familiar with the road usage laws of the states in which you travel.

COACH NET

Triple E is a proud partner of Coach Net, an extensive support program that provides complete and fully paid roadside assistance, emergency road service, and special warranty support benefits that follow you throughout Canada and the US. Service is free for the first year of ownership and is available at a nominal fee for subsequent years.

Coach Net's 24-hour Customer Care includes:

- Emergency roadside assistance including tow vehicle
- Toll free technician hotline for operation and service support
- Toll free nationwide service appointment assistance
- Free custom trip routing and color maps
- Warranty service at over 6,800 locations throughout North America
- Benefits such as free jump starts, tire changes, fuel delivery, and lock out service

Brochure pictures may be shown with optional equipment.