

SIGNATURE

2002



SIGNATURE 2002

All Signs Point to Adventure

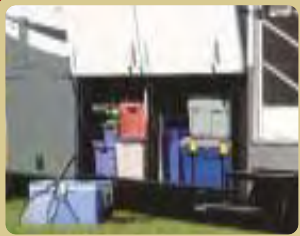


AT HOME AWAY FROM HOME

EMBARK ON A NEW LIFESTYLE. THERE
ARE NO DETOURS BECAUSE EVERY MILE
BECOMES PART OF YOUR DESTINATION.
EXPLORE NATURAL WONDERS, MAKE NEW
FRIENDS, BUT ABOVE ALL - DISCOVER IT'S
ALWAYS WORTH THE TRIP.



A3607G shown with Laguna Mist Decor



Handy and lockable exterior storage allows you to bring all the essentials.



The Signature's thoughtful design provides extra space and ample storage.



For added convenience, you'll appreciate the driver side entry/exit door.

With the 2002 Triple E Signature Motorhome, you're not choosing a vehicle, you're choosing a way of life. Detail, such as easy maintenance oak hardwood flooring in the galley and plenty of storage space, will ensure your way of life is simplified.

The galley is fully equipped. A recessed acrylic sink, two door refrigerator, and

microconvection oven provide the conveniences of home, while you can choose optional extras such as a coffee maker or water purifier.

The bedroom assures a great night's sleep thanks to a residential quality inner spring coil mattress, pleated shades, and a thermostatically controlled fan.



New for 2002, the Signature A3608F features a practically seamless flush floor slide out.

CHOICE IS YOURS

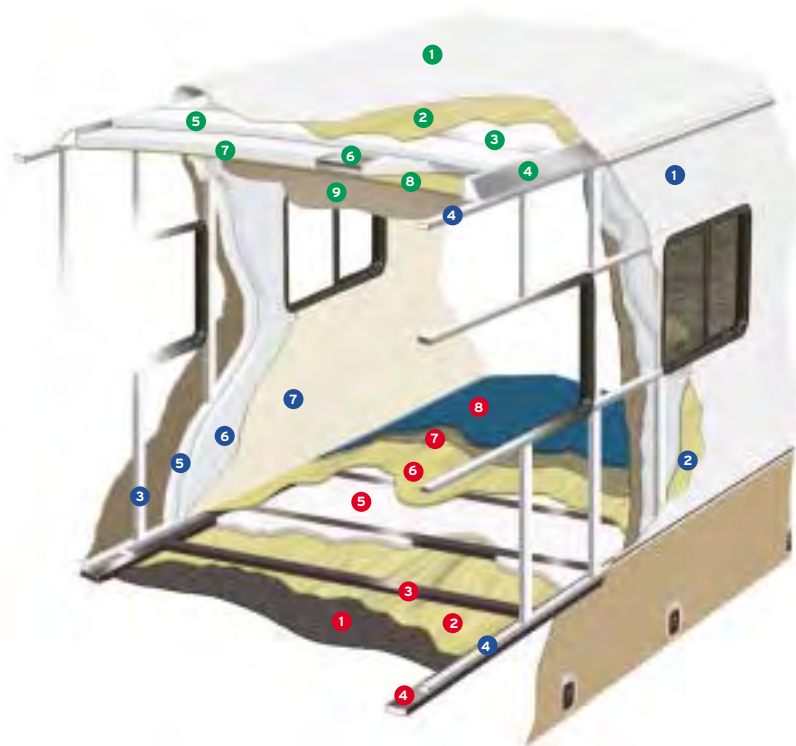
ALONG WITH YOUR CHOICE OF THREE FLOOR PLANS AND A HOST OF OPTIONS, FURTHER CUSTOMIZE YOUR MOTORHOME WITH ONE OF THREE DISTINCT INTERIOR DESIGN SCHEMES. SELECTED BY A GROUP OF PROFESSIONALS, THE COMBINATIONS SKILLFULLY COORDINATE UPHOLSTERY, CARPETING, WINDOW TREATMENTS, AND EXTERIOR GRAPHICS WITH PAINT.



Colors may not be exactly as shown due to the printing process.
Please see your dealer for specific colors.

CONSTRUCTION

The major considerations in building a top quality motorhome are long lasting beauty coupled with the ability to stand up to any weather conditions. The coach is an aluminium and steel framed structure with vacuum bonded gelcoat fiberglass side walls and a domed roof finished with a seamless EPDM membrane.



Floor (Exterior to Interior)

1. One Piece Woven Poly Propylene Underbelly
2. 3/8" Plywood
3. Tubular Steel Framing (Welded)
4. Styrofoam Filled Wall Support Plates
5. 1" Block Styrofoam Insulation
6. 1/2" Plywood
7. Carpet Underlay
8. Carpeting (Floor covering)

Sidewalls (Exterior to Interior)

1. Seamless Fiberglass Exterior
2. Luaun Structural Backer
3. Aluminium Framing (Welded)
4. Styrofoam Filled Floor and Roof Plate
5. 1" Block Styrofoam Insulation
6. 1/2" Styrofoam Thermal Break Insulation
7. Interior Decorative Luaun Wall Panels

Roof (Exterior to Interior)

1. One Piece EPDM Roofing
2. Luaun Backer
3. Aluminium Roof Truss
4. Styrofoam Filled Roof Truss Supports
5. 1 1/2" Block Styrofoam Insulation
6. Enclosed/Insulated Climate Control Ducting
7. 2" Block Styrofoam Thermal Break Insulation
8. 3/8" Plywood
9. One Piece Headliner

STANDARDS AND OPTIONS

S = Standard O = Option 🇨🇦 New for 2002

	A3606	A3607G	A3608F
VEHICULAR			
Air Brakes c/w Automatic Slack Adjusters	S	S	S
Air Horns	O	O	O
Air Suspension c/w Bilstein Shocks	S	S	S
Allison 3000MH Six Speed Automatic Transmission c/w Lock Up	S	S	S
Alternator 160 Amp	S	S	S
Automatic HWH Leveling System c/w Auto Air Dump	S	S	S
Automotive Driving Lights	S	S	S
Automotive Undercoating	S	S	S
Battery Boost Switch (Coach to Chassis Batteries)	S	S	S
Battery Selector Switch for Radio	S	S	S
Block Heater (1000 W) with Switch in Bedroom to turn on Internally 🇨🇦	S	S	S
Chassis - Freightliner c/w Caterpillar 300 HP Turbo Diesel (XC)			
GVW 228" Wheel base	S	S	S
Chassis Air Conditioner	S	S	S
Cruise Control	S	S	S
Dash Mounted Directional Compass with Exterior Temperature Readout 🇨🇦	O	O	O
Driver Door c/w Power Window	S	S	S
Driver/Passenger Floor Mats	S	S	S
Exhaust Brake	S	S	S
Exterior Ladder c/w Detachable Lower Section	O	O	O
Flush Floor HWH Slide Out System 🇨🇦	-	-	S
Fuel Fill on Both Sides of Coach 🇨🇦	S	S	S
Halogen Headlamps	S	S	S
Heated Remote Power Mirrors	S	S	S
High Mount Stoplight - LED Long Life	S	S	S
HWH Slide Out System	-	S	-
Integrated Steel Reinforced Fiberglass Bumpers	S	S	S
Radial Tires Michelin - 235/80R22.5XR	S	S	S
Rust Protection	O	O	O
Three Point Cockpit Seatbelts	S	S	S
Tilt/Telescopic Steering Wheel	S	S	S
Trailer Hitch Receiver c/w Wiring and 7 Pole Plug - Class III	S	S	S
Transmission Cooler	S	S	S
Wet Arm Windshield Wipers c/w Intermittent Function	S	S	S
Wheel Simulators	S	S	S
CONSTRUCTION			
Aluminium Baggage Doors c/w Gas Struts and Slam Latch	S	S	S
Domed EPDM Rubber Roof	S	S	S
Gelcoat Fiberglass Molded Front & Rear Masks	S	S	S
Lined & Lighted Baggage Compartments	S	S	S
Steel Cab Floor, Firewall and Dash Structure	S	S	S
Thermal Pane Windows	S	S	S
Vacuum Bonded Aluminium Framed Insulated Sidewall & Roof Construction	S	S	S
Vacuum Bonded Gelcoat Fiberglass Sidewalls	S	S	S
Vacuum Bonded Steel Frame Insulated Floor Construction	S	S	S

STANDARDS AND OPTIONS (CON'T)

S = Standard O = Option 🇨🇦 New for 2002

	A3606	A3607G	A3608F
EXTERIOR			
Dead Bolt Door Lock	S	S	S
Docking Lights installed in Rear Bumper (2)	S	S	S
Double Electric Retractable Entry Step	S	S	S
Exterior Graphics with Graphics on Slide out End Walls 🇨🇦	S	S	S
Exterior Shower	S	S	S
Monogrammed Exterior Entry Handle	S	S	S
Patio Light	S	S	S
Rain Gutters c/w Down Spout 🇨🇦	S	S	S
Screened Entry Door	S	S	S
Stud Shield on Entry Door	S	S	S
INTERIOR			
Automotive "Soft Touch" Headliner	S	S	S
Ceramic Floor Tile in Galley and Lavatory with Carpet Upgrade	O	O	O
Cockpit Ventilating Fans	O	O	O
Courtesy Floor Lamps	S	S	S
Day/Night Pleated Shades c/w Bedroom Blackout	S	S	S
Decorative Bedspread and Throw Pillows	S	S	S
Decorative Mirrors	S	S	S
Domed Interior Ceiling	S	S	S
Driver's & Passenger's Side Roller Blinds	O	O	O
Driver's Power Sun Visor	O	O	O
Dual Roller Glide Drawers c/w Travel Locks	S	S	S
Easy Under Bed Storage c/w Gas Struts	S	S	S
Fluorescent Aisle Lighting	S	S	S
Halogen Lighting Package under the Overhead Cabinets above the Couch and above the Bed	O	O	O
Insulated Vent Covers	O	O	O
Raised Panel Oak Cabinet Doors	S	S	S
Passenger's Computer Tray	O	O	O
Skylight - Shower Compartment	S	S	S
Skylight with Blind in Living Area	O	O	O
Slide Out Drawer Option in Washer /Dryer Cabinet (N/A with Washer/Dryer Option)	O	O	O
Soft Wrapped 5" Laminated Dinette Cushions	S	S	S
Southco Snap Latches on Galley, Lavatory Overhead Cabinets and Large Wardrobe Doors	S	S	S
Thermostatically Controlled Fan - Bedroom (N/A with Dual Roof Air Option)	S	S	S
Thermostatically Controlled Fan in Living Area	O	O	O
Upgrade to Thermostatically Controlled Fan in Bathroom (included with Dual Roof Air Option)	O	O	O
Wall to Wall Carpeting	S	S	S
Wardrobe Slide in Bedroom with Sliding Mirrored Closet Doors	-	O	O
FURNITURE			
Booth Dinette c/w Slide Out Drawers 🇨🇦	S	S	S
Cloth Captain's Chair in lieu of Cocktail Chair	O	O	O
Cloth Flexsteel Versaflex Lounge (N/A with Home Theater Option) 🇨🇦	-	-	O
Cloth Swivel Cocktail Chair	S	S	S
Cloth Swivel Driver/Passenger Captain Chairs c/w Recline	S	S	S
Electric Driver Seat	O	O	O

	A3606	A3607G	A3608F
Hide-A-Bed	-	-	S
Magic Bed 🇨🇦	O	O	-
Mattress (Residential Quality Queen Bed)	S	S	S
Mattress Upgrade	O	O	O
Oak Table & Chairs in Lieu of Booth Dinette - optional on all models (F-Freestanding, W - Wall Mount)	W	W	F
Refreshment Centre	O	O	O
Ultra Leather Captain's Chair In Lieu of Cocktail Chair	O	O	O
Ultra Leather Captain's Chairs (Passenger & Driver)	O	O	O
Ultra Leather Cocktail Chair In Lieu of Cloth	O	O	O
Ultra Leather Recliner In Lieu of Cocktail Chair	-	O	O
GALLEY			
Coffee Maker	O	O	O
Gas Oven	O	O	O
Hardwood Flooring in Galley	S	S	S
Laminate Countertop with Solid Surface Edging c/w Laminate Sink Covers	S	S	S
Micro/Convection Oven (OTR) with Range Hood and Light	S	S	S
Raised Oak Fridge Inserts	O	O	O
Recessed Acrylic Sink	S	S	S
Recessed Bi-fold Range Cover	S	S	S
Recessed Cooktop c/w High Output Burner	S	S	S
Solid Surface Counter in Galley and Booth Dinette or Freestanding Table (N/A on Wall Mount Table Option)	O	O	O
Two Door Fridge, LP/Electric (8 cu. ft.)	S	S	S
Two Door Refrigerator LP/Electric (10 Cu. ft.)	O	O	O
LAVATORY			
Oak Medicine Cabinet c/w Mirrored Headboard	S	S	S
One Piece Fiberglass Tub/Shower	S	S	S
Power Vent Fan in Bathroom	S	S	S
Marine Toilet	S	S	S
ENTERTAINMENT			
A/C 20" Color Stereo TV c/w Remote in Overhead Cabinet	S	S	S
AC Video Cassette Recorder	O	O	O
AC/DC Bedroom TV c/w Remote in Oak Cabinet	O	O	O
AM/FM Cassette In-Dash Stereo	O	O	O
AM/FM Cassette Stereo c/w 8 Stack CD Changer	O	O	O
AM/FM CD In-Dash Stereo	S	S	S
AM/FM CD Stereo in Bedroom with Alarm Clock	O	O	O
CB Antenna	O	O	O
DHS Mobile Theater System with Premium AM/FM CD Stereo with 8 Stack CD Changer	O	O	O
Exterior Stereo AM/FM CD Player c/w 2 Speakers	O	O	O
Exterior Telephone & Cable TV Hookup	S	S	S
Prewire for AC/DC Bedroom TV	S	S	S
Radio Monoplex System	S	S	S
Satellite Dish Prewire (with 12V and 110V Power)	O	O	O
TV Antenna c/w Booster and "Antenna Up", Light on Dash 🇨🇦	S	S	S
Video System Master Control	S	S	S

SPECIFICATIONS

	A3606	A3607G	A3608F
SYSTEMS			
1500 Watt Inverter c/w 75 Amp Charger (Power to TV, VCR, Dinette Plug, Coffee Maker (where equipped))	S	S	S
3-Way Water Pump Switch	S	S	S
50 Amp Electrical Service c/w Energy Management System	S	S	S
Alarm System c/w Motion Detectors	0	0	0
Bi-Directional Isolator Relay Delay (BIRD) Battery Charging	S	S	S
Black Tank Flush System	S	S	S
Central Vacuum With Outlet in Baggage Compartment	S	S	S
Deep Cycle Coach Batteries- 2 X 6 Volt	S	S	S
Dry Chemical Fire Extinguisher	S	S	S
Dual 25,000 BTU Furnaces c/w Electronic Ignition	-	S	S
Dual Ducted Air Conditioning (2) 13,500 BTU with Thermostatic Controlled Fan Upgrade in Lavatory	0	0	0
Ducted 13,500 BTU Roof Air Conditioner	S	S	S
Easy Access Propane Tank	S	S	S
Electronic Battery Disconnect (Coach Batteries)	S	S	S
Electronic Ignition Gas/Electric/Motoraid Water Heater (10 gal.)	S	S	S
Electronic Smoke, LP and CO Detectors	S	S	S
Enclosed, Insulated and Dual Heated Fresh Water & Waste Holding Tanks	S	S	S
Generator 7.0 KW Onan Gas Marquis with Separate Fuel Tank	0	0	0
Generator 7.5 KW Onan Quiet Diesel	0	0	0
Generator Ready Package	S	S	S
Prep. Package for Washer/Dryer	S	S	S
Pre-Wire Rearview Camera	S	S	S
Rear Auxiliary Automotive Heater with Electric Water Valve	S	S	S
Rearview Camera/Monitor - Color - Mounted on Dash	0	0	0
Single 35,000 BTU Furnace c/w Electronic Ignition	S	-	-
Solar Panel Prewire	0	0	0
Systems Monitor Panel	S	S	S
Upgrade to 4 X 6 Volt Coach Batteries	0	0	0
Washer/Dryer (Vented)	0	0	0
Water Heater By-Pass	S	S	S
Water Purifier	0	0	0
Water Tank Fill/Bleach Fill System	S	S	S
Winterization System c/w Potable Antifreeze Pick-up	S	S	S
Factory P.D.I.	0	0	0

GVWR

GROSS VEHICLE WEIGHT RATING means the maximum permissible weight of this motorhome. The GVWR is equal to or greater than the sum of the unloaded vehicle weight (UVW) plus the net carrying capacity (NCC).

UVW

UNLOADED VEHICLE WEIGHT means the weight of the motorhome as built at the factory with full fuel, engine oil, and coolants. The UVW does not include cargo, fresh water, LP gas, occupants, factory or dealer installed accessories.

NCC

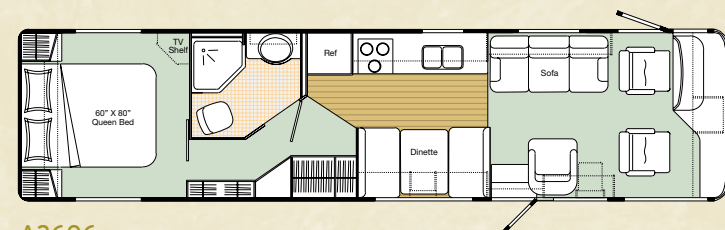
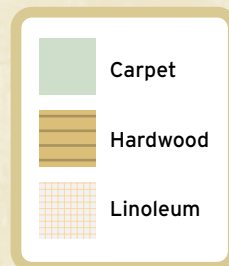
NET CARRYING CAPACITY means the maximum weight of all occupants, including the driver, personal belongings, food, fresh water, LP gas, tools, tongue weight of towed vehicle, factory and dealer installed accessories, etc., that can be carried by this motorhome. (NCC is equal to or less than GVWR minus UVW.)

NOTE: Please see your dealer for weights of factory installed options.

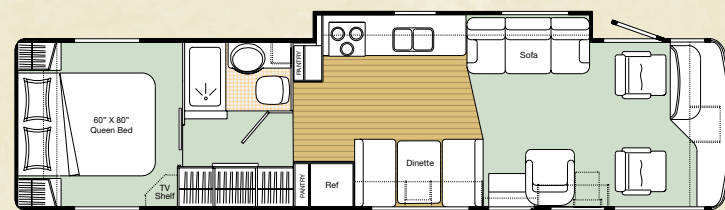
	A3606	A3607G	A3608F
GVWR - lbs (kg)	26850(12180)	26850(12180)	26850(12180)
UVW - lbs (kg)	TBA	21010(9550)	21424(9738)
NCC - lbs (kg)	TBA	5840(2655)	5426(2466)
Wheelbase - inches (mm)	228(5791)	228(5791)	228(5791)
Length - feet (mm)	36'6"(11125)	36'6"(11125)	36'6"(11125)
Width - feet (mm)	8'4"(2534)	8'4"(2534)	8'4"(2534)
Height Incl. A/C - feet (mm)	11'10"(3607)	11'10"(3607)	11'10"(3607)
* Water Tank Cap. - gal (l)	88(333)	88(333)	88(333)
Holding Tank Cap. - (grey) - gal (l)	50(191)	50(191)	50(191)
Holding Tank Cap. - (black) - gal (l)	44(168)	44(168)	44(168)
Fuel Capacity - gal (l)	90(341)	90(341)	90(341)
Propane Capacity - gal (l)	32(121)	32(121)	32(121)

* Includes 10 gallon Water Heater (All capacities in US gallons)

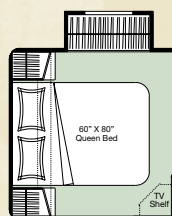
FLOORPLANS



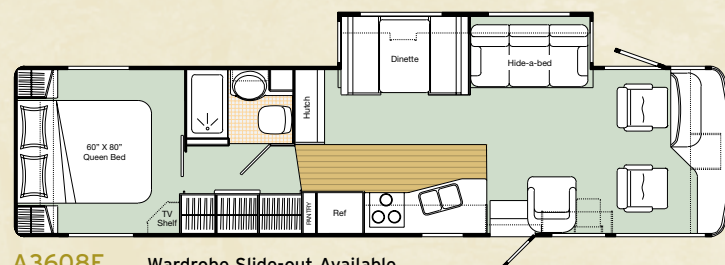
A3606



A3607G Wardrobe Slide-out Available



Wardrobe Slide-out



A3608F Wardrobe Slide-out Available

Product improvement is a continuing process at Triple E Recreational Vehicles. Thus we reserve the right to change specifications on any or all products without prior notice; errors and omissions excepted. Triple E Recreational Vehicles is under no obligation to undertake modification to units manufactured prior to changes on specifications.

TRIPLE E QUALITY

A Triple E Signature Motorhome is a combination of first-class materials and quality controlled construction.

Built with a solid foundation, integrity is never compromised – inside and out.

Exteriors are virtually maintenance free and abrasion resistant. The domed roof allows for quick water run-off and an EPDM membrane serves both to protect against leaks and contribute to energy-efficiency.

Cabinetry is constructed with screws rather than staples to ensure structural integrity and durability. Both strong and moisture repellent, the solid oak doors are a front to ample storage space.

Designer interior decors are a mixture of style and functionality – with quality fabrics developed to handle years of wear while meeting or exceeding flame retardant standards.

All Triple E products are built to CSA (Canadian Standards Association) or RVIA (Recreational Vehicle Industry Association) Standards. Triple E was one of the first RV manufacturers to obtain the ISO 9002 certification – your assurance of the careful construction and high quality materials that are part and parcel of every Triple E Recreational Vehicle.



MAKE SURE YOU VISIT OUR WEBSITE AT www.tripleerv.com

Triple E is proud to offer a

2 YEAR LIMITED WARRANTY

on structure as well as most major components.

Please see your dealer for further details.



This combination of labels assures the purchaser that the manufacturer has met or surpassed CSA-CRVA-RVIA standards covering electrical services, gas services, plumbing services, and vehicular safety.

Signature motorhomes exceed 96 inches in width. In some states, 96 inches is the maximum width of vehicles travelling some or all state roads. It is the responsibility of the owner to be familiar with the road usage laws of the states in which you travel.

COACH NET

Triple E is a proud partner of Coach Net, an extensive support program that provides complete and fully paid roadside assistance, emergency road service, and special warranty support benefits that follow you throughout Canada and the US. Service is free for the first year of ownership and is available at a nominal fee for subsequent years.

Coach Net's 24-hour Customer Care includes:

- Emergency roadside assistance including tow vehicle
- Toll free technician hotline for operation and service support
- Toll free nationwide service appointment assistance
- Free custom trip routing and color maps
- Warranty service at over 6,800 locations throughout North America
- Benefits such as free jump starts, tire changes, fuel delivery, and lock out service

Brochure pictures may be shown with optional equipment.



P.O. Box 1230, Winkler, MB
Canada R6W 4C4
Tel: (204) 325-4361
Fax: (204) 325-5241
www.tripleerv.com

Experience the Difference