

Signature



Life is good!



*The little things make a **big** difference*

GO FURTHER. STAY LONGER. SMILE

MORE. ENJOY THE FREEDOM AS

YOU SIT BEHIND THE WHEEL AND

SAVOR THE ENVIRONMENT AS YOU

EXPERIENCE LIFE ON THE GO. IT'S

ALWAYS WORTH THE TRIP.



A3619FB shown with Lambswool Decor



The convenient exterior baggage door provides handy access to large items.



The smart pull out pantry is an example of space saving design.



For added convenience, you'll appreciate the driver side entry/exit door.

DESIGNED TO ACCOMMODATE

Come home to the 2003 Signature. This well appointed luxury coach provides every comfort as you embrace the RV way of life.

Details such as easy maintenance hardwood flooring and thermostatically controlled fans contribute to style and comfort, while quality amenities provide the conveniences of home:

» two door refrigerator

- » micro/convection oven
- » residential quality inner spring coil mattress

Equipped with numerous standard features and providing thoughtful options such as a solid oak table and chairs and ceramic floor tile with upgraded carpeting, the Signature is "home sweet home" defined.



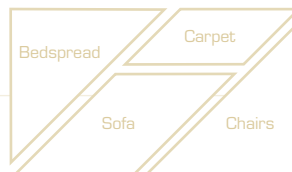
For more information on the Signature's features, visit our website at www.tripleerv.com



A roomy cockpit and automotive style dash makes driving familiar and comfortable.

Inset - Big button radio

Choice is Yours



ALONG WITH YOUR CHOICE OF FIVE FLOOR PLANS AND A HOST OF OPTIONS, FURTHER CUSTOMIZE YOUR MOTORHOME WITH ONE OF THREE DISTINCT INTERIOR DESIGN SCHEMES. SELECTED BY A GROUP OF PROFESSIONALS, THE COMBINATIONS SKILLFULLY COORDINATE UPHOLSTERY, CARPETING, WINDOW TREATMENTS, AND EXTERIOR GRAPHICS.



SIERRA SUNSET



HARBOR BLUE



LAMBSWOOL



HORIZON



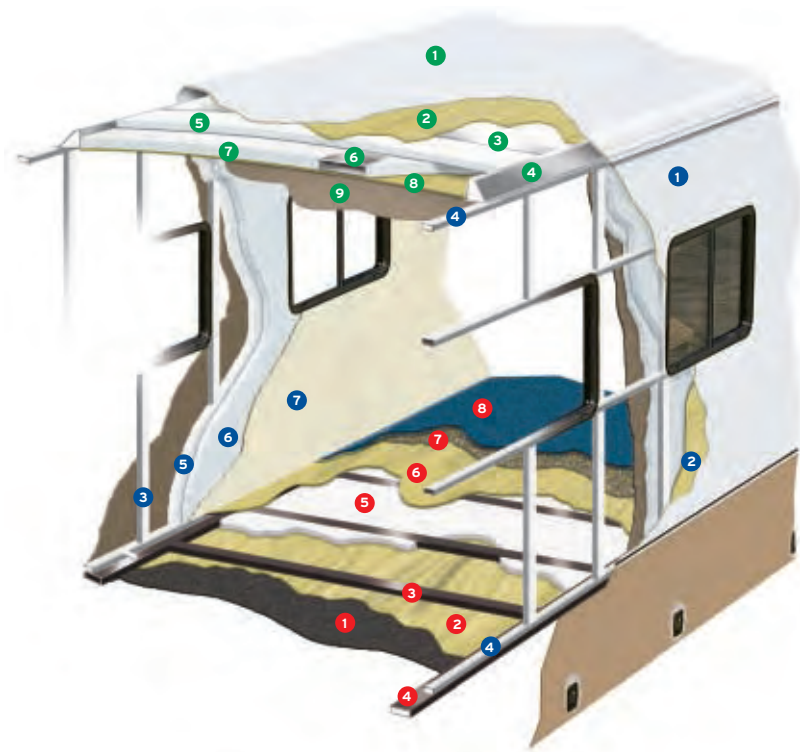
PECAN



For a virtual tour of the Signature, visit www.tripleerv.com

Colors may not be exactly as shown due to the printing process. Please see your dealer for specific colors.

The major considerations in building a top quality motorhome are long lasting beauty coupled with the ability to stand up to any weather conditions. The coach is an aluminium and steel framed structure with vacuum bonded gel coat fiberglass sidewalls and a domed roof finished with a seamless EPDM membrane.



Floor (Exterior to Interior)

1. One Piece Woven Poly Propylene Underbelly
2. 3/8" Plywood
3. Tubular Steel Framing (Welded)
4. Styrofoam-Filled Wall Support Plates
5. 1" Block Styrofoam Insulation
6. 1/2" Plywood
7. Carpet Underlay
8. Carpeting (Floor Covering)

Sidewalls (Exterior to Interior)

1. Seamless Fiberglass Exterior
2. Luaun Structural Backer
3. Aluminium Framing (Welded)
4. Styrofoam Filled Floor and Roof Plate
5. 1" Block Styrofoam Insulation
6. 1/2" Styrofoam Thermal Break Insulation
7. Interior Decorative Luaun Wall Panels

Roof (Exterior to Interior)

1. One Piece EPDM Roofing
2. Luaun Backer
3. Aluminium Roof Truss
4. Styrofoam Filled Roof Truss Supports
5. 1 1/2" Block Styrofoam Insulation
6. Enclosed/Insulated Climate Control Ducting
7. 2" Block Styrofoam Thermal Break Insulation
8. 3/8" Plywood
9. One Piece Headliner



INTERIOR COMFORT AND EXTERIOR PROTECTION

Born of our northern heritage, Triple E's exclusive Climate Guard® system is quite simply the best interior comfort and exterior protection package available in the recreational vehicle industry today.

The Climate Guard® system has been developed with today's motorhome enthusiast in mind. It provides year round climate controlled comfort for passengers as well as built in protection for the motorhome itself, ensuring years of trouble free operation and enjoyment.

INTERIOR COMFORT

- Dometic® roof air conditioners, ducted front to rear, control the temperature throughout the coach.
- High output chassis air conditioner provides traveling comfort.
- Electronic ignition furnace designed to maintain requested interior temperatures through extreme exterior temperatures.
- High output chassis heater for quick windshield defrost.
- A rear auxiliary automotive heater - complete with electric valve - makes travel comfortable while heating the fresh water and holding tank compartments.
- Vacuum bonded, aluminum framed, insulated sidewall and roof construction provides high strength and maintained warmth throughout the coach.
- Coach windows are designed with a dual pane construction - impeding the transfer of cold to make the interior of the window warmer and less subject to condensation.
- Optional insulated vent covers provide superior insulation for the fantastic fans and roof vents.

EXTERIOR PROTECTION

- Scratch and hail resistant gel coat fiberglass sidewalls with all weather exterior finish are easy to maintain and will not rust, pit, or fade.
- A domed, seamless, insulated, one piece EPDM rubber roof promotes quick water run off and reduces the noise of outside elements.
- Urethane undercoating protects against dust and moisture and reduces stone and road noise.
- Steel enclosed, fiberglass insulated and heated fresh water and holding tanks assure extreme cold climate performance for your plumbing system. Tanks are heated from two different sources: the motorhome's ducted furnace while parked and the rear auxiliary heater when traveling.
- Winterization system complete with potable antifreeze pickup kit allows you to easily drain tanks and fill water lines with potable antifreeze.
- Steel, insulated, and sealed firewall protects the driver and passengers from the outside elements.
- Additional 1/2" thermal break insulation beyond the standard 1" Styrofoam block insulation separates the climate controlled interior from the outside elements.



See for yourself how spacious the Signature is. Take a virtual tour at www.tripleeerv.com.

STANDARDS AND OPTIONS

S = Standard O = Option **New** = New for 2003

A3607GW
A3617GW
A3608FW
A3618FW
A3619FB

VEHICULAR

Air Brakes - c/w Automatic Slack Adjusters	S	S	S	S	S
Air Conditioner - Chassis	S	S	S	S	S
Air Horns	O	O	O	O	O
Air Suspension - c/w Bilstein Shocks	S	S	S	S	S
Alternator 160 Amp	S	S	S	S	S
Block Heater (1000 W) with Switch in Bedroom	S	S	S	S	S
Bumper - Integrated Steel Reinforced Fiberglass Bumpers	S	S	S	S	S
New Chassis – Freightliner c/w Caterpillar 300 HP Turbo Diesel (XC) 29410 lb. GVW 228" Wheel base Raised Rail	S	S	S	S	S
Compass/Thermometer - Dash Mounted Directional Compass with Exterior Temperature Readout	O	O	O	O	O
Cruise Control	S	S	S	S	S
Door - Driver Door c/w Power Window	S	S	S	S	S
Exhaust Brake	S	S	S	S	S
Fans - Chrome Cockpit Ventilating with Dash Switch	O	O	O	O	O
Fuel Fill - Concealed Locking Fuel Fill Access On Both Sides	S	S	S	S	S
Headlights - Halogen Styled	S	S	S	S	S
Hitch - Trailer Hitch Receiver w/ wiring and plug - Class III	S	S	S	S	S
Jacks - HWH Automatic Levelling System c/w Auto Air Dump	S	S	S	S	S
Light - High Mount Stoplight – LED Long Life	S	S	S	S	S
Lights - Halogen Automotive Driving Lights	S	S	S	S	S
Mats - Driver / Passenger (On Mid Entry Models) Floor Mats	S	S	S	S	S
Mirrors - Heated Remote Power Mirrors	S	S	S	S	S
New Mud Guard - Monogrammed Triple E Rear Mudguard (Stainless Steel on Rubber)	O	O	O	O	O
Rust Protection	O	O	O	O	O
Slide Out - Flush Floor HWH Hydraulic Slide Out System	-	-	S	S	S
Slide Out - HWH Hydraulic Slide Out System	S	S	-	-	-
Steering Wheel - Tilt/Telescopic	S	S	S	S	S
Switch - Battery Boost Switch (Coach to Chassis Batteries)	S	S	S	S	S
Switch - Battery Selector Switch for Radio	S	S	S	S	S
New Tires- Michelin Radial – 255/80R22.5XRV	S	S	S	S	S
Transmission - Allison 3000MH Six Speed Automatic c/w Lock Up	S	S	S	S	S
Transmission Cooler	S	S	S	S	S
Undercoating - Automotive Type	S	S	S	S	S
Wheel Simulators	S	S	S	S	S
Wipers - Wet Arm Windshield Wipers c/w Intermittent Function	S	S	S	S	S

CONSTRUCTION

Baggage Doors - Aluminium Baggage Doors c/w Gas Struts and Slam Latch	S	S	S	S	S
Gel coat Fiberglass Molded Front & Rear Masks	S	S	S	S	S
Lined & Lighted Baggage Compartments	S	S	S	S	S
Roof - Domed EPDM Rubber Roof	S	S	S	S	S
Steel Cab Floor, Firewall and Dash Structure	S	S	S	S	S
Vacuum Bonded Aluminium Framed Insulated Sidewall & Roof Construction with Thermal Break	S	S	S	S	S
Vacuum Bonded Gel Coat Fiberglass Sidewalls	S	S	S	S	S
Vacuum Bonded Steel Framed Insulated Floor Construction	S	S	S	S	S
Windows - Thermal Pane	S	S	S	S	S

EXTERIOR

Door - Screened Entry with Stud Shield and Deadbolt Lock	S	S	S	S	S
Exterior Shower	S	S	S	S	S
Graphics - Exterior Graphics on Slide out End Walls	S	S	S	S	S
Handle - Monogrammed Exterior Entry Handle	S	S	S	S	S
Ladder - Exterior Ladder c/w Detachable Lower Section	O	O	O	O	O
New Light - Scare Light	S	S	S	S	S
Lights - Docking lights in Rear Bumper	S	S	S	S	S
Step - Electric Retractable Entry Step	S	S	S	S	S

INTERIOR

Bedspread - Decorative Bedspread and Throw Pillows	S	S	S	S	S
Blinds - Drivers and Passengers Side Roller Blinds	O	O	O	O	O
Cabinetry - Solid Oak Cabinet Face Framing	S	S	S	S	S
Ceiling - Domed with Automotive "Soft Touch" Headliner	S	S	S	S	S
Cover - Pneumatic Powered Front Step Cover	-	S	-	S	S
Covers - Insulated Vent Covers	O	O	O	O	O
Detectors - Electronic Smoke, LP and CO	S	S	S	S	S
Doors - Solid Oak Raised Panel Cabinet Doors	S	S	S	S	S
Drawers - Drawer Option in Washer Dryer Cabinet (N/A with Washer/Dryer Option)	O	O	O	O	O
Drawers - Dual Roller Glide Drawers c/w Travel Lock	S	S	S	S	S
Fire Extinguisher - Dry Chemical	S	S	S	S	S
Flooring - Ceramic Floor Tile in Galley, Lavatory and Entrance (Ft Dr Models) w/ Empress Carpet in Living and Bedroom Area	O	O	O	O	O
Flooring - Wall to Wall Carpeting in Living and Bedroom Areas	S	S	S	S	S
Latches - Snap Latches on Galley, Lavatory Overhead Cabinets and Large Wardrobe Doors.	S	S	S	S	S
Lighting - Fluorescent Aisle Lighting	S	S	S	S	S
Lighting - Halogen Lighting Upgrade under Cabinets above Couch and Bed	O	O	O	O	O
Lights - Courtesy Floor Lamps	S	S	S	S	S
New Safe - Keylock Safebox	O	O	O	O	O
Shades - Day/Night Pleated Shades c/w Bedroom Blackout	S	S	S	S	S
Skylight - with Blind in Living Area	O	O	O	O	O
Slide Out - Bed Slide Out with Rear Wardrobe	-	-	-	-	-
Slide Out - Wardrobe Slide in Bedroom with Mirrored Closet Doors	S	S	S	S	S
Storage - Easy Under bed Storage and Engine Access c/w Gas Struts	S	S	S	S	S
Sun Visor - Power Driver's Sun Visor	O	O	O	O	O
Sun Visor - Power Passenger's Sun Visor	O	O	O	O	O
Thermostatically Controlled Fan – Bedroom (N/A with Dual Roof Air Option)	S	S	S	S	S
Tray - Passenger's Computer Tray	O	O	O	O	O

FURNITURE

Booth Dinette - Wrapped Laminated Cushions	S	S	S	S	S
w/ Slide Out Drawers and Solid Surface Edged Table	S	S	S	S	S
Cabinet - Refreshment Centre (3 Bottle)	O	-	O	-	-
Cabinet - Refreshment Centre (6 Bottle) (Only Available with Recliner Option)	-	O	-	O	O
Chair - Cloth Swivel Cocktail on Passenger Side c/w Solid Oak Flip Table	S	-	S	-	-
Chair - Ultra Leather Cocktail In Lieu of Cloth Cocktail Chair on Passenger Side	O	-	O	-	-
Chair - Ultra Leather Recliner In Lieu of Cocktail Chair on Passenger Side	O	-	O	-	-
Chair - Ultra Leather Recliner	-	O	-	O	O
w/ Flip Table In Lieu Easy Bed on Passenger Side	-	-	S	S	S
Hide-A-Bed - Cloth Hide-A-Bed on Driver's Side	-	-	S	S	S
Hide-A-Bed - Ultra Leather Hide-A-Bed on the Driver's Side (Contrasting Color)	-	-	O	O	O
Magic Bed - Cloth in Lieu of Easy Bed on Drivers Side	O	O	-	-	-
Magic Bed - Ultra Leather Magic Bed On Drivers Side (Contrasting Color)	O	O	-	-	-
New Mattress - Air Coil Mattress Upgrade on Hide-A-Bed (c/w 110V Air Pump)	-	-	O	O	O
Mattress - Residential Quality Queen (60" x 80")	S	S	S	S	S

A3607GW
A3617GW
A3608FW
A3618FW
A3619FB

STANDARDS AND OPTIONS (CON'T)

S = Standard O = Option **New** = New for 2003

	A3607GW	A3617GW	A3608FW	A3618FW	A3619FB
Mattress - Upgrade	O	O	O	O	O
New Seat - Ultra Leather Captain's Chairs (Passenger & Driver) w/ Integral Seat Belts w/ 6 Way Power	S	S	S	S	S
New Seat - Upgrade to 8 Way Power Driver and Passenger Seats (Integral Belts) with Power Foot Rest on Passenger Side	O	O	O	O	O
Sofa - Cloth Easy Bed on Driver's Side	S	S	-	-	-
Sofa - Cloth Easy Bed On Passenger's Side	-	S	-	S	S
Sofa - Cloth Flexsteel Versaflex Lounge on Drivers Side	-	-	O	O	O
Sofa - Ultra Leather Easy Bed On Passenger's Side	-	O	-	O	O
Sofa - Ultra Leather Versa Flex Lounger on Driver's Side (contrasting color)	-	-	O	O	O
Table - Oak Table & Chairs in Lieu of Fixed Dinette (F-Freestanding, W - Wall Mount)	W	W	F	F	F
GALLEY					
Coffee Maker	O	O	O	O	O
Cook top - Recessed c/w High Output Burners	S	S	S	S	S
Countertop - Laminate w/ Solid Surface Edging, Stainless Steel Sink w/ Flush Sink Covers	S	S	S	S	S
Countertop - Solid Surface Counter in Galley and booth Dinette or Freestanding Table (N/A on Wall mount tables)	O	O	O	O	O
Cover - Recessed Bi fold Range Cover	S	S	S	S	S
Flooring - Hardwood Flooring in Galley	S	S	S	S	S
Micro/Convection Oven - (OTR) c/w 110v Range Hood and Light	S	S	S	S	S
Oven - LP Gas	O	O	O	O	O
Refrigerator - 8 cu. ft. Dometic® Two Door LP/ Electric	S	S	S	S	S
Refrigerator - 10 cu. ft. Dometic® Two Door LP/Electric	O	O	O	O	O
Refrigerator Inserts - Raised Sculptured Solid Oak Fridge Inserts	O	O	O	O	O
LAVATORY					
Cabinet - Oak Medicine Cabinet c/w Mirror	S	S	S	S	S
Fan - Power Vent Fan in Bathroom	S	S	S	S	S
Fan - Upgrade to Thermostatically Controlled (Non Reversible) Ceiling Fan in Lavatory or Toilet Room	O	O	O	O	O
Skylight - Shower Compartment	S	S	S	S	S
Toilet - Foot Flush	S	S	S	S	S
Tub/Shower - One Piece Fiberglass Tub/Shower	S	S	S	S	S
ENTERTAINMENT					
CB Antenna - includes Coax Lead in under Dash	O	O	O	O	O
Master Control - Audio/Video Master Control Switch Box	S	S	S	S	S
Pre-wire - for AC or DC Bedroom TV	S	S	S	S	S
Pre-wire - Satellite Dish (with 12V Power and 110V)	O	O	O	O	O
Radio Monoplex System	S	S	S	S	S
New Stereo - AM/FM Cassette in Dash Stereo					
w/ Separate 6 Disk CD Changer with Big Buttons - 80 Watt	O	O	O	O	O
New Stereo - AM/FM CD in Dash Stereo w/ Big Buttons - 80 Watt	S	S	S	S	S
New Stereo - AM/FM CD Stereo c/w 6 Stack in Dash CD Changer w/ Big Buttons - 80 Watt	O	O	O	O	O
Stereo - AM/FM CD Stereo in Bedroom with Alarm Clock	O	O	O	O	O
Stereo - DHS Mobile Theatre System with AM/FM CD Stereo with 6 Stack in Dash CD Changer w/Big Buttons	O	O	O	O	O
Stereo - Exterior AM/FM - CD Stereo with Shielded Speakers	O	O	O	O	O
Telephone & Cable TV Hook-up - Exterior	S	S	S	S	S
New TV - AC 20" Exterior TV in Baggage Compartment c/w Slide-out Tray	O	O	O	O	O
TV - AC 20" Color Stereo TV c/w Remote in Bedroom	-	-	-	-	S
TV - AC 20" Colour Stereo TV c/w Remote in Overhead Cabinet	S	S	S	S	S
TV - DC 13" Color c/w Remote in Oak Cabinet in Bedroom	O	O	O	-	-
TV Antenna - Roof Top Retractable Antenna c/w Booster	S	S	S	S	S
VCR - AC Video Cassette Recorder	O	O	O	O	O

HEATING VENTILATING AND AIR CONDITIONING

Air Conditioner - Dual Ducted (2) 13,500 BTU	O	O	O	O	O
Air Conditioner - Ducted 13,500 BTU	S	S	S	S	S
Fan - Thermostatically Controlled Fan in Living Area	O	O	O	O	O
New Furnace - 40,000 BTU Central Furnace c/w Electronic Ignition	S	S	S	S	S
New Heater - Dual Rear Auxiliary Automotive Heaters c/w Electric Valve	S	S	S	S	S

ELECTRICAL

Alarm System c/w Motion Detector	O	O	O	O	O
Batteries - Deep Cycle Coach Batteries- 2 X 6 volt	S	S	S	S	S
Batteries - Upgrade to 4 - 6 Volt Coach Batteries	O	O	O	O	O
Bi-Directional Isolator Relay Delay (BIRD) Battery Charging	S	S	S	S	S
New Generator - 5.5 KW Onan Quiet Diesel on Slide Out Tray (Available Late 2002)	O	O	O	O	O
New Generator - 6.5 KW Onan LP Gas Marquis on Slide Out Tray (will not start below -8C)	O	O	O	O	O
Generator - 7.5 KW Onan Quiet Diesel on Slide Out Tray	O	O	O	O	O
New Generator Ready Package	S	S	S	S	S
Inverter - 2000 Watt Inverter c/w 100 Amp Charger	O	O	O	O	O
New Panel - 50 Amp Electrical Service c/w Energy Management System	S	S	S	S	S
Pre-wire - 110V/12V Receptacles in Baggage Compartment (Freezer Prep)	S	S	S	S	S
Pre-wire - For Rear-view Camera	S	S	S	S	S
Pre-wire - For Solar Panel	O	O	O	O	O
Switch - 3-Way Water Pump Switch	S	S	S	S	S
Switch - Electronic Battery Disconnect (Coach Batteries)	S	S	S	S	S

PLUMBING AND LP SYSTEMS

Black Tank Flush System	S	S	S	S	S
Holding Tanks - Enclosed and Insulated, Dual Heated Waste Holding Tanks	S	S	S	S	S
LP Tank - Easy Access Propane Tank	S	S	S	S	S
Prep. Package for Washer/Dryer	S	S	S	S	S
Systems Monitor Panel	S	S	S	S	S
Valve - Water Heater By-Pass	S	S	S	S	S
Water Heater - Electronic Ignition LP/Electric/Motoraid Water Heater (10 gal.)	S	S	S	S	S
Water Purifier - Faucet in Galley	O	O	O	O	O
Water Tank - Enclosed and Insulated, Dual Heated Fresh Water Tank	S	S	S	S	S
Water Tank Fill and Bleach Port	S	S	S	S	S
Winterization System c/w Potable Antifreeze Tank	S	S	S	S	S

SYSTEMS

New Freezer / Refrigerator - On Slide Out Tray 1.38 Cu Ft (AC/DC)	O	O	O	O	O
New Rearview Camera/Monitor - Color LCD Display Mounted in Dash	O	O	O	O	O
Vacuum - Central Vacuum With Outlet in Baggage Compartment	S	S	S	S	S
Washer/Dryer (vented)	O	O	O	O	O

Factory P.D.I.

Product improvement is a continuing process at Triple E Recreational Vehicles. Thus, we reserve the right to change specifications on any or all products without prior notice, errors and omissions excepted. Triple E Recreational Vehicles is under no obligation to undertake modification to units manufactured prior to changes on specifications.

GVWR GROSS VEHICLE WEIGHT RATING means the maximum permissible weight of this motorhome. The GVWR is equal to or greater than the sum of the unloaded vehicle weight (UVW) plus the net carrying capacity (NCC).

UVW UNLOADED VEHICLE WEIGHT means the weight of the motorhome as built at the factory with full fuel, engine oil, and coolants. The UVW does not include cargo, fresh water, LP gas, occupants, or factory or dealer installed accessories.

NCC NET CARRYING CAPACITY means the maximum weight of all occupants, including the driver, personal belongings, food, fresh water, LP gas, tools, tongue weight of towed vehicle, factory and dealer installed accessories, etc., that can be carried by this motorhome. NCC is equal to or less than GVWR minus UVW.

NOTE: Please see your dealer for weights of factory installed options.

SPECIFICATIONS

SIGNATURE 2003	A3607GW	A3617GW	A3608FW
GVWR - lbs (kg)	29410(13338)	29410(13338)	29410(13338)
UVW - lbs (kg)	TBA	TBA	TBA
NCC - lbs (kg)	TBA	TBA	TBA
Wheelbase - in (mm)	228"(5791)	228"(5791)	228"(5791)
Length - ft (mm)	36'9"(11201)	36'9"(11201)	36'9"(11201)
Width - ft (mm)	8'4"(2534)	8'4"(2534)	8'4"(2534)
Height Incl. A/C- ft (mm)	12'1"(3683)	12'1"(3683)	12'1"(3683)
*Water Tank Cap. - Gal (l)	102(386)	102(386)	102(386)
Holding Tank Cap. Grey. Cap. - Gal (l)	57(216)	57(216)	57(216)
Holding Tank Cap. Black - Gal (l)	57(216)	57(216)	57(216)
Fuel Cap. - Gal (l)	100(379)	100(379)	100(379)
Propane Cap. - Gal (l)	32(121)	32(121)	32(121)
SIGNATURE 2003	A3618FW	A3619FB	
GVWR - lbs (kg)	29410(13338)	29410(13338)	
UVW - lbs (kg)	TBA	22697(10317)	
NCC - lbs (kg)	TBA	6713(3051)	
Wheelbase - in (mm)	228"(5791)	228"(5791)	
Length - ft (mm)	36'9"(11201)	36'9"(11201)	
Width - ft (mm)	8'4"(2534)	8'4"(2534)	
Height Incl. A/C- ft (mm)	12'1"(3683)	12'1"(3683)	
*Water Tank Cap. - Gal (l)	102(386)	102(386)	
Holding Tank Cap. Grey. Cap. - Gal (l)	57(216)	57(216)	
Holding Tank Cap. Black - Gal (l)	57(216)	57(216)	
Fuel Cap. - Gal (l)	100(379)	100(379)	
Propane Cap. - Gal (l)	32(121)	32(121)	
*Includes 10 gallon Water Heater		All capacities in US gallons	



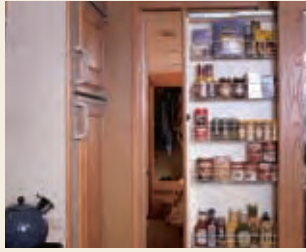
For added elegance, upgrade to an oak table and chairs in lieu of the fixed dinette.



The Signature provides storage in easily accessible, nonobtrusive places.



The convenient exterior baggage door provides handy access to large items.



The smart pull out pantry is an example of space saving design.



For added convenience, you'll appreciate the driver side entry/exit door.

DESIGNED TO ACCOMMODATE

Come home to the 2003 Signature. This well appointed luxury coach provides every comfort as you embrace the RV way of life.

Details such as easy maintenance hardwood flooring and thermostatically controlled fans contribute to style and comfort, while quality amenities provide the conveniences of home:

» two door refrigerator

- » micro/convection oven
- » residential quality inner spring coil mattress

Equipped with numerous standard features and providing thoughtful options such as a solid oak table and chairs and ceramic floor tile with upgraded carpeting, the Signature is "home sweet home" defined.



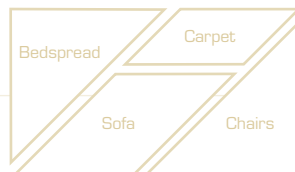
For more information on the Signature's features, visit our website at www.tripleerv.com



A roomy cockpit and automotive style dash makes driving familiar and comfortable.

Inset - Big button radio

Choice is Yours



ALONG WITH YOUR CHOICE OF FIVE FLOOR PLANS AND A HOST OF OPTIONS, FURTHER CUSTOMIZE YOUR MOTORHOME WITH ONE OF THREE DISTINCT INTERIOR DESIGN SCHEMES. SELECTED BY A GROUP OF PROFESSIONALS, THE COMBINATIONS SKILLFULLY COORDINATE UPHOLSTERY, CARPETING, WINDOW TREATMENTS, AND EXTERIOR GRAPHICS.



SIERRA SUNSET



HARBOR BLUE



LAMBSWOOL



HORIZON



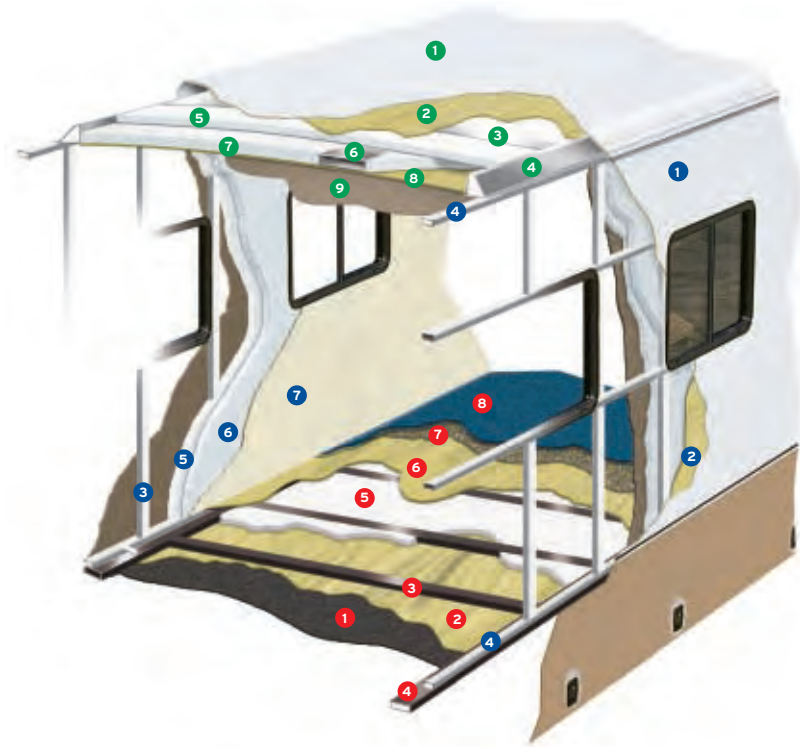
PECAN



For a virtual tour of the Signature, visit www.tripleerv.com

Colors may not be exactly as shown due to the printing process. Please see your dealer for specific colors.

The major considerations in building a top quality motorhome are long lasting beauty coupled with the ability to stand up to any weather conditions. The coach is an aluminium and steel framed structure with vacuum bonded gel coat fiberglass sidewalls and a domed roof finished with a seamless EPDM membrane.



Floor (Exterior to Interior)

1. One Piece Woven Poly Propylene Underbelly
2. 3/8" Plywood
3. Tubular Steel Framing (Welded)
4. Styrofoam-Filled Wall Support Plates
5. 1" Block Styrofoam Insulation
6. 1/2" Plywood
7. Carpet Underlay
8. Carpeting (Floor Covering)

Sidewalls (Exterior to Interior)

1. Seamless Fiberglass Exterior
2. Luaun Structural Backer
3. Aluminium Framing (Welded)
4. Styrofoam Filled Floor and Roof Plate
5. 1" Block Styrofoam Insulation
6. 1/2" Styrofoam Thermal Break Insulation
7. Interior Decorative Luaun Wall Panels

Roof (Exterior to Interior)

1. One Piece EPDM Roofing
2. Luaun Backer
3. Aluminium Roof Truss
4. Styrofoam Filled Roof Truss Supports
5. 1 1/2" Block Styrofoam Insulation
6. Enclosed/Insulated Climate Control Ducting
7. 2" Block Styrofoam Thermal Break Insulation
8. 3/8" Plywood
9. One Piece Headliner



INTERIOR COMFORT AND EXTERIOR PROTECTION

Born of our northern heritage, Triple E's exclusive Climate Guard® system is quite simply the best interior comfort and exterior protection package available in the recreational vehicle industry today.

The Climate Guard® system has been developed with today's motorhome enthusiast in mind. It provides year round climate controlled comfort for passengers as well as built in protection for the motorhome itself, ensuring years of trouble free operation and enjoyment.

INTERIOR COMFORT

- Dometic® roof air conditioners, ducted front to rear, control the temperature throughout the coach.
- High output chassis air conditioner provides traveling comfort.
- Electronic ignition furnace designed to maintain requested interior temperatures through extreme exterior temperatures.
- High output chassis heater for quick windshield defrost.
- A rear auxiliary automotive heater - complete with electric valve - makes travel comfortable while heating the fresh water and holding tank compartments.
- Vacuum bonded, aluminum framed, insulated sidewall and roof construction provides high strength and maintained warmth throughout the coach.
- Coach windows are designed with a dual pane construction - impeding the transfer of cold to make the interior of the window warmer and less subject to condensation.
- Optional insulated vent covers provide superior insulation for the fantastic fans and roof vents.

EXTERIOR PROTECTION

- Scratch and hail resistant gel coat fiberglass sidewalls with all weather exterior finish are easy to maintain and will not rust, pit, or fade.
- A domed, seamless, insulated, one piece EPDM rubber roof promotes quick water run off and reduces the noise of outside elements.
- Urethane undercoating protects against dust and moisture and reduces stone and road noise.
- Steel enclosed, fiberglass insulated and heated fresh water and holding tanks assure extreme cold climate performance for your plumbing system. Tanks are heated from two different sources: the motorhome's ducted furnace while parked and the rear auxiliary heater when traveling.
- Winterization system complete with potable antifreeze pickup kit allows you to easily drain tanks and fill water lines with potable antifreeze.
- Steel, insulated, and sealed firewall protects the driver and passengers from the outside elements.
- Additional 1/2" thermal break insulation beyond the standard 1" Styrofoam block insulation separates the climate controlled interior from the outside elements.



See for yourself how spacious the Signature is. Take a virtual tour at www.tripleeerv.com.

STANDARDS AND OPTIONS

S = Standard O = Option **New** = New for 2003

A3607GW
A3617GW
A3608FW
A3618FW
A3619FB

VEHICULAR

Air Brakes - c/w Automatic Slack Adjusters	S	S	S	S	S
Air Conditioner - Chassis	S	S	S	S	S
Air Horns	O	O	O	O	O
Air Suspension - c/w Bilstein Shocks	S	S	S	S	S
Alternator 160 Amp	S	S	S	S	S
Block Heater (1000 W) with Switch in Bedroom	S	S	S	S	S
Bumper - Integrated Steel Reinforced Fiberglass Bumpers	S	S	S	S	S
New Chassis – Freightliner c/w Caterpillar 300 HP Turbo Diesel (XC) 29410 lb. GVW 228" Wheel base Raised Rail	S	S	S	S	S
Compass/Thermometer - Dash Mounted Directional Compass with Exterior Temperature Readout	O	O	O	O	O
Cruise Control	S	S	S	S	S
Door - Driver Door c/w Power Window	S	S	S	S	S
Exhaust Brake	S	S	S	S	S
Fans - Chrome Cockpit Ventilating with Dash Switch	O	O	O	O	O
Fuel Fill - Concealed Locking Fuel Fill Access On Both Sides	S	S	S	S	S
Headlights - Halogen Styled	S	S	S	S	S
Hitch - Trailer Hitch Receiver w/ wiring and plug - Class III	S	S	S	S	S
Jacks - HWH Automatic Levelling System c/w Auto Air Dump	S	S	S	S	S
Light - High Mount Stoplight – LED Long Life	S	S	S	S	S
Lights - Halogen Automotive Driving Lights	S	S	S	S	S
Mats - Driver / Passenger (On Mid Entry Models) Floor Mats	S	S	S	S	S
Mirrors - Heated Remote Power Mirrors	S	S	S	S	S
New Mud Guard - Monogrammed Triple E Rear Mudguard (Stainless Steel on Rubber)	O	O	O	O	O
Rust Protection	O	O	O	O	O
Slide Out - Flush Floor HWH Hydraulic Slide Out System	-	-	S	S	S
Slide Out - HWH Hydraulic Slide Out System	S	S	-	-	-
Steering Wheel - Tilt/Telescopic	S	S	S	S	S
Switch - Battery Boost Switch (Coach to Chassis Batteries)	S	S	S	S	S
Switch - Battery Selector Switch for Radio	S	S	S	S	S
New Tires- Michelin Radial – 255/80R22.5XRV	S	S	S	S	S
Transmission - Allison 3000MH Six Speed Automatic c/w Lock Up	S	S	S	S	S
Transmission Cooler	S	S	S	S	S
Undercoating - Automotive Type	S	S	S	S	S
Wheel Simulators	S	S	S	S	S
Wipers - Wet Arm Windshield Wipers c/w Intermittent Function	S	S	S	S	S

CONSTRUCTION

Baggage Doors - Aluminium Baggage Doors c/w Gas Struts and Slam Latch	S	S	S	S	S
Gel coat Fiberglass Molded Front & Rear Masks	S	S	S	S	S
Lined & Lighted Baggage Compartments	S	S	S	S	S
Roof - Domed EPDM Rubber Roof	S	S	S	S	S
Steel Cab Floor, Firewall and Dash Structure	S	S	S	S	S
Vacuum Bonded Aluminium Framed Insulated Sidewall & Roof Construction with Thermal Break	S	S	S	S	S
Vacuum Bonded Gel Coat Fiberglass Sidewalls	S	S	S	S	S
Vacuum Bonded Steel Framed Insulated Floor Construction	S	S	S	S	S
Windows - Thermal Pane	S	S	S	S	S

EXTERIOR

Door - Screened Entry with Stud Shield and Deadbolt Lock	S	S	S	S	S
Exterior Shower	S	S	S	S	S
Graphics - Exterior Graphics on Slide out End Walls	S	S	S	S	S
Handle - Monogrammed Exterior Entry Handle	S	S	S	S	S
Ladder - Exterior Ladder c/w Detachable Lower Section	O	O	O	O	O
New Light - Scare Light	S	S	S	S	S
Lights - Docking lights in Rear Bumper	S	S	S	S	S
Step - Electric Retractable Entry Step	S	S	S	S	S

INTERIOR

Bedspread - Decorative Bedspread and Throw Pillows	S	S	S	S	S
Blinds - Drivers and Passengers Side Roller Blinds	O	O	O	O	O
Cabinetry - Solid Oak Cabinet Face Framing	S	S	S	S	S
Ceiling - Domed with Automotive "Soft Touch" Headliner	S	S	S	S	S
Cover - Pneumatic Powered Front Step Cover	-	S	-	S	S
Covers - Insulated Vent Covers	O	O	O	O	O
Detectors - Electronic Smoke, LP and CO	S	S	S	S	S
Doors - Solid Oak Raised Panel Cabinet Doors	S	S	S	S	S
Drawers - Drawer Option in Washer Dryer Cabinet (N/A with Washer/Dryer Option)	O	O	O	O	O
Drawers - Dual Roller Glide Drawers c/w Travel Lock	S	S	S	S	S
Fire Extinguisher - Dry Chemical	S	S	S	S	S
Flooring - Ceramic Floor Tile in Galley, Lavatory and Entrance (Ft Dr Models) w/ Empress Carpet in Living and Bedroom Area	O	O	O	O	O
Flooring - Wall to Wall Carpeting in Living and Bedroom Areas	S	S	S	S	S
Latches - Snap Latches on Galley, Lavatory Overhead Cabinets and Large Wardrobe Doors.	S	S	S	S	S
Lighting - Fluorescent Aisle Lighting	S	S	S	S	S
Lighting - Halogen Lighting Upgrade under Cabinets above Couch and Bed	O	O	O	O	O
Lights - Courtesy Floor Lamps	S	S	S	S	S
New Safe - Keylock Safebox	O	O	O	O	O
Shades - Day/Night Pleated Shades c/w Bedroom Blackout	S	S	S	S	S
Skylight - with Blind in Living Area	O	O	O	O	O
Slide Out - Bed Slide Out with Rear Wardrobe	-	-	-	-	-
Slide Out - Wardrobe Slide in Bedroom with Mirrored Closet Doors	S	S	S	S	S
Storage - Easy Under bed Storage and Engine Access c/w Gas Struts	S	S	S	S	S
Sun Visor - Power Driver's Sun Visor	O	O	O	O	O
Sun Visor - Power Passenger's Sun Visor	O	O	O	O	O
Thermostatically Controlled Fan – Bedroom (N/A with Dual Roof Air Option)	S	S	S	S	S
Tray - Passenger's Computer Tray	O	O	O	O	O

FURNITURE

Booth Dinette - Wrapped Laminated Cushions	S	S	S	S	S
w/ Slide Out Drawers and Solid Surface Edged Table	S	S	S	S	S
Cabinet - Refreshment Centre (3 Bottle)	O	-	O	-	-
Cabinet - Refreshment Centre (6 Bottle) (Only Available with Recliner Option)	-	O	-	O	O
Chair - Cloth Swivel Cocktail on Passenger Side c/w Solid Oak Flip Table	S	-	S	-	-
Chair - Ultra Leather Cocktail In Lieu of Cloth Cocktail Chair on Passenger Side	O	-	O	-	-
Chair - Ultra Leather Recliner In Lieu of Cocktail Chair on Passenger Side	O	-	O	-	-
Chair - Ultra Leather Recliner	-	O	-	O	O
w/ Flip Table In Lieu Easy Bed on Passenger Side	-	-	S	S	S
Hide-A-Bed - Cloth Hide-A-Bed on Driver's Side	-	-	S	S	S
Hide-A-Bed - Ultra Leather Hide-A-Bed on the Driver's Side (Contrasting Color)	-	-	O	O	O
Magic Bed - Cloth in Lieu of Easy Bed on Drivers Side	O	O	-	-	-
Magic Bed - Ultra Leather Magic Bed On Drivers Side (Contrasting Color)	O	O	-	-	-
New Mattress - Air Coil Mattress Upgrade on Hide-A-Bed (c/w 110V Air Pump)	-	-	O	O	O
Mattress - Residential Quality Queen (60" x 80")	S	S	S	S	S

A3607GW
A3617GW
A3608FW
A3618FW
A3619FB

STANDARDS AND OPTIONS (CON'T)

S = Standard O = Option **New** = New for 2003

	A3607GW	A3617GW	A3608FW	A3618FW	A3619FB
Mattress - Upgrade	O	O	O	O	O
New Seat - Ultra Leather Captain's Chairs (Passenger & Driver) w/ Integral Seat Belts w/ 6 Way Power	S	S	S	S	S
New Seat - Upgrade to 8 Way Power Driver and Passenger Seats (Integral Belts) with Power Foot Rest on Passenger Side	O	O	O	O	O
Sofa - Cloth Easy Bed on Driver's Side	S	S	-	-	-
Sofa - Cloth Easy Bed On Passenger's Side	-	S	-	S	S
Sofa - Cloth Flexsteel Versaflex Lounge on Drivers Side	-	-	O	O	O
Sofa - Ultra Leather Easy Bed On Passenger's Side	-	O	-	O	O
Sofa - Ultra Leather Versa Flex Lounger on Driver's Side (contrasting color)	-	-	O	O	O
Table - Oak Table & Chairs in Lieu of Fixed Dinette (F-Freestanding, W - Wall Mount)	W	W	F	F	F
GALLEY					
Coffee Maker	O	O	O	O	O
Cook top - Recessed c/w High Output Burners	S	S	S	S	S
Countertop - Laminate w/ Solid Surface Edging, Stainless Steel Sink w/ Flush Sink Covers	S	S	S	S	S
Countertop - Solid Surface Counter in Galley and booth Dinette or Freestanding Table (N/A on Wall mount tables)	O	O	O	O	O
Cover - Recessed Bi fold Range Cover	S	S	S	S	S
Flooring - Hardwood Flooring in Galley	S	S	S	S	S
Micro/Convection Oven - (OTR) c/w 110v Range Hood and Light	S	S	S	S	S
Oven - LP Gas	O	O	O	O	O
Refrigerator - 8 cu. ft. Dometic® Two Door LP/ Electric	S	S	S	S	S
Refrigerator - 10 cu. ft. Dometic® Two Door LP/Electric	O	O	O	O	O
Refrigerator Inserts - Raised Sculptured Solid Oak Fridge Inserts	O	O	O	O	O
LAVATORY					
Cabinet - Oak Medicine Cabinet c/w Mirror	S	S	S	S	S
Fan - Power Vent Fan in Bathroom	S	S	S	S	S
Fan - Upgrade to Thermostatically Controlled (Non Reversible) Ceiling Fan in Lavatory or Toilet Room	O	O	O	O	O
Skylight - Shower Compartment	S	S	S	S	S
Toilet - Foot Flush	S	S	S	S	S
Tub/Shower - One Piece Fiberglass Tub/Shower	S	S	S	S	S
ENTERTAINMENT					
CB Antenna - includes Coax Lead in under Dash	O	O	O	O	O
Master Control - Audio/Video Master Control Switch Box	S	S	S	S	S
Pre-wire - for AC or DC Bedroom TV	S	S	S	S	S
Pre-wire - Satellite Dish (with 12V Power and 110V)	O	O	O	O	O
Radio Monoplex System	S	S	S	S	S
New Stereo - AM/FM Cassette in Dash Stereo					
w/ Separate 6 Disk CD Changer with Big Buttons - 80 Watt	O	O	O	O	O
New Stereo - AM/FM CD in Dash Stereo w/ Big Buttons - 80 Watt	S	S	S	S	S
New Stereo - AM/FM CD Stereo c/w 6 Stack in Dash CD Changer w/ Big Buttons - 80 Watt	O	O	O	O	O
Stereo - AM/FM CD Stereo in Bedroom with Alarm Clock	O	O	O	O	O
Stereo - DHS Mobile Theatre System with AM/FM CD Stereo with 6 Stack in Dash CD Changer w/Big Buttons	O	O	O	O	O
Stereo - Exterior AM/FM - CD Stereo with Shielded Speakers	O	O	O	O	O
Telephone & Cable TV Hook-up - Exterior	S	S	S	S	S
New TV - AC 20" Exterior TV in Baggage Compartment c/w Slide-out Tray	O	O	O	O	O
TV - AC 20" Color Stereo TV c/w Remote in Bedroom	-	-	-	-	S
TV - AC 20" Colour Stereo TV c/w Remote in Overhead Cabinet	S	S	S	S	S
TV - DC 13" Color c/w Remote in Oak Cabinet in Bedroom	O	O	O	-	-
TV Antenna - Roof Top Retractable Antenna c/w Booster	S	S	S	S	S
VCR - AC Video Cassette Recorder	O	O	O	O	O

HEATING VENTILATING AND AIR CONDITIONING

Air Conditioner - Dual Ducted (2) 13,500 BTU	O	O	O	O	O
Air Conditioner - Ducted 13,500 BTU	S	S	S	S	S
Fan - Thermostatically Controlled Fan in Living Area	O	O	O	O	O
New Furnace - 40,000 BTU Central Furnace c/w Electronic Ignition	S	S	S	S	S
New Heater - Dual Rear Auxiliary Automotive Heaters c/w Electric Valve	S	S	S	S	S

ELECTRICAL

Alarm System c/w Motion Detector	O	O	O	O	O
Batteries - Deep Cycle Coach Batteries- 2 X 6 volt	S	S	S	S	S
Batteries - Upgrade to 4 - 6 Volt Coach Batteries	O	O	O	O	O
Bi-Directional Isolator Relay Delay (BIRD) Battery Charging	S	S	S	S	S
New Generator - 5.5 KW Onan Quiet Diesel on Slide Out Tray (Available Late 2002)	O	O	O	O	O
New Generator - 6.5 KW Onan LP Gas Marquis on Slide Out Tray (will not start below -8C)	O	O	O	O	O
Generator - 7.5 KW Onan Quiet Diesel on Slide Out Tray	O	O	O	O	O
New Generator Ready Package	S	S	S	S	S
Inverter - 2000 Watt Inverter c/w 100 Amp Charger	O	O	O	O	O
New Panel - 50 Amp Electrical Service c/w Energy Management System	S	S	S	S	S
Pre-wire - 110V/12V Receptacles in Baggage Compartment (Freezer Prep)	S	S	S	S	S
Pre-wire - For Rear-view Camera	S	S	S	S	S
Pre-wire - For Solar Panel	O	O	O	O	O
Switch - 3-Way Water Pump Switch	S	S	S	S	S
Switch - Electronic Battery Disconnect (Coach Batteries)	S	S	S	S	S

PLUMBING AND LP SYSTEMS

Black Tank Flush System	S	S	S	S	S
Holding Tanks - Enclosed and Insulated, Dual Heated Waste Holding Tanks	S	S	S	S	S
LP Tank - Easy Access Propane Tank	S	S	S	S	S
Prep. Package for Washer/Dryer	S	S	S	S	S
Systems Monitor Panel	S	S	S	S	S
Valve - Water Heater By-Pass	S	S	S	S	S
Water Heater - Electronic Ignition LP/Electric/Motoraid Water Heater (10 gal.)	S	S	S	S	S
Water Purifier - Faucet in Galley	O	O	O	O	O
Water Tank - Enclosed and Insulated, Dual Heated Fresh Water Tank	S	S	S	S	S
Water Tank Fill and Bleach Port	S	S	S	S	S
Winterization System c/w Potable Antifreeze Tank	S	S	S	S	S

SYSTEMS

New Freezer / Refrigerator - On Slide Out Tray 1.38 Cu Ft (AC/DC)	O	O	O	O	O
New Rearview Camera/Monitor - Color LCD Display Mounted in Dash	O	O	O	O	O
Vacuum - Central Vacuum With Outlet in Baggage Compartment	S	S	S	S	S
Washer/Dryer (vented)	O	O	O	O	O

Factory P.D.I.

Product improvement is a continuing process at Triple E Recreational Vehicles. Thus, we reserve the right to change specifications on any or all products without prior notice, errors and omissions excepted. Triple E Recreational Vehicles is under no obligation to undertake modification to units manufactured prior to changes on specifications.

GVWR GROSS VEHICLE WEIGHT RATING means the maximum permissible weight of this motorhome. The GVWR is equal to or greater than the sum of the unloaded vehicle weight (UVW) plus the net carrying capacity (NCC).

UVW UNLOADED VEHICLE WEIGHT means the weight of the motorhome as built at the factory with full fuel, engine oil, and coolants. The UVW does not include cargo, fresh water, LP gas, occupants, or factory or dealer installed accessories.

NCC NET CARRYING CAPACITY means the maximum weight of all occupants, including the driver, personal belongings, food, fresh water, LP gas, tools, tongue weight of towed vehicle, factory and dealer installed accessories, etc., that can be carried by this motorhome. NCC is equal to or less than GVWR minus UVW.

NOTE: Please see your dealer for weights of factory installed options.

SPECIFICATIONS

SIGNATURE 2003	A3607GW	A3617GW	A3608FW
GVWR - lbs (kg)	29410(13338)	29410(13338)	29410(13338)
UVW - lbs (kg)	TBA	TBA	TBA
NCC - lbs (kg)	TBA	TBA	TBA
Wheelbase - in (mm)	228"(5791)	228"(5791)	228"(5791)
Length - ft (mm)	36'9"(11201)	36'9"(11201)	36'9"(11201)
Width - ft (mm)	8'4"(2534)	8'4"(2534)	8'4"(2534)
Height Incl. A/C- ft (mm)	12'1"(3683)	12'1"(3683)	12'1"(3683)
*Water Tank Cap. - Gal (l)	102(386)	102(386)	102(386)
Holding Tank Cap. Grey. Cap. - Gal (l)	57(216)	57(216)	57(216)
Holding Tank Cap. Black - Gal (l)	57(216)	57(216)	57(216)
Fuel Cap. - Gal (l)	100(379)	100(379)	100(379)
Propane Cap. - Gal (l)	32(121)	32(121)	32(121)
SIGNATURE 2003	A3618FW	A3619FB	
GVWR - lbs (kg)	29410(13338)	29410(13338)	
UVW - lbs (kg)	TBA	22697(10317)	
NCC - lbs (kg)	TBA	6713(3051)	
Wheelbase - in (mm)	228"(5791)	228"(5791)	
Length - ft (mm)	36'9"(11201)	36'9"(11201)	
Width - ft (mm)	8'4"(2534)	8'4"(2534)	
Height Incl. A/C- ft (mm)	12'1"(3683)	12'1"(3683)	
*Water Tank Cap. - Gal (l)	102(386)	102(386)	
Holding Tank Cap. Grey. Cap. - Gal (l)	57(216)	57(216)	
Holding Tank Cap. Black - Gal (l)	57(216)	57(216)	
Fuel Cap. - Gal (l)	100(379)	100(379)	
Propane Cap. - Gal (l)	32(121)	32(121)	
*Includes 10 gallon Water Heater		All capacities in US gallons	

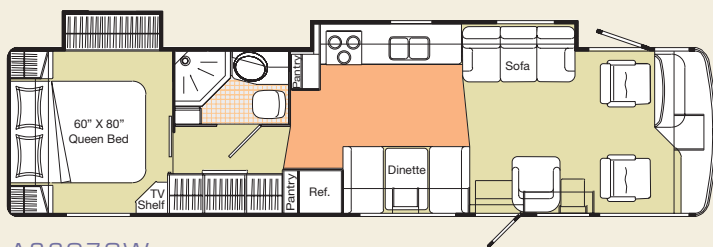


For added elegance, upgrade to an oak table and chairs in lieu of the fixed dinette.

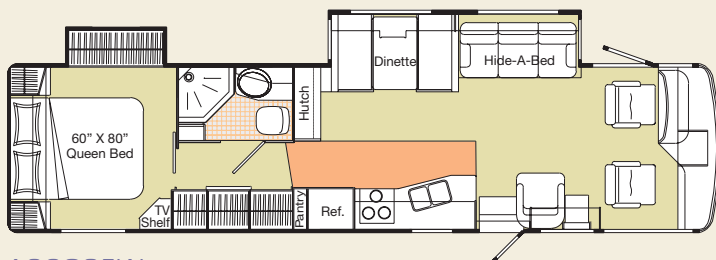


The Signature provides storage in easily accessible, nonobtrusive places.

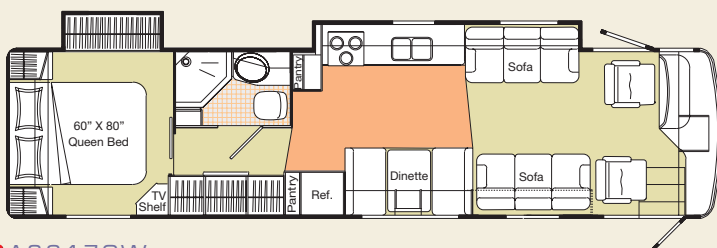
FLOORPLANS



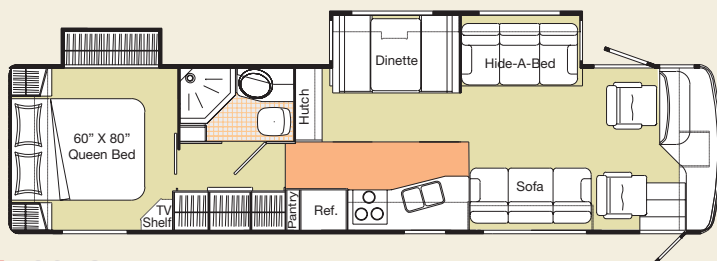
A3607GW



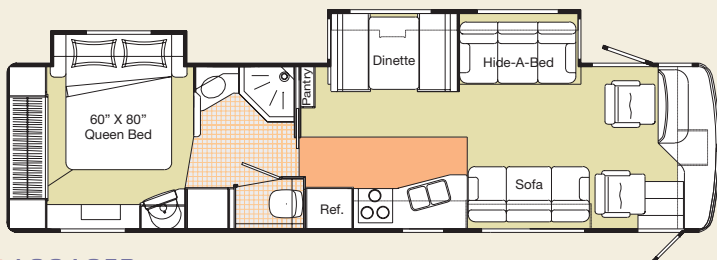
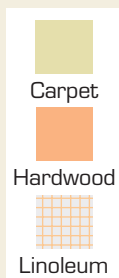
A3608FW



New A3617GW



New A3618FW



New A3619FB

TRIPLE E QUALITY

A Triple E Signature Motorhome is a combination of first-class materials and quality controlled construction.

Built with a solid foundation, integrity is never compromised – inside or out.

Exteriors are virtually maintenance free and abrasion resistant. Leaks are prevented thanks to an EPDM membrane – which also contributes to energy-efficiency.

Cabinetry is constructed with screws rather than staples to ensure structural integrity and durability. Both strong and moisture repellent, the solid oak doors are a front to ample storage space.

Designer interior decors are a mixture of style and functionality – with quality fabrics developed to handle years of wear while meeting or exceeding flame retardant standards.

All Triple E products are built to CSA (Canadian Standards Association) or RVIA (Recreational Vehicle Industry Association Standards. We were one of the first RV manufacturers to obtain the ISO 9002 certification – your assurance of the careful construction and high quality materials that are part and parcel of every Triple E Unit.



Triple E is proud to offer a 2 YEAR LIMITED WARRANTY

on structure as well as most major components.
Please see your dealer for further details.



This combination of labels assures the purchaser that the manufacturer has met or surpassed CSA-CRVA-RVIA standards covering electrical services, gas services, plumbing services, and vehicular safety.

Signature Motorhomes exceed 96 inches in width. In some states 96 inches is the maximum width of vehicles travelling some or all state roads. It is the responsibility of the owner to be familiar with the road usage laws of the states in which you travel.

COACH NET

Triple E is a proud partner of Coach Net, an extensive support program that provides complete and fully paid roadside assistance, emergency road service, and special warranty support benefits that follow you throughout Canada and the US. Service is free for the first year of ownership and available at a nominal fee for subsequent years.

Coach Net's 24-hour Customer Care includes:

- Emergency roadside assistance including tow vehicle
- Toll free technician hotline for operation and service support
- Toll free nationwide service appointment assistance
- Free custom trip routing and color maps
- Warranty service at over 6,800 locations throughout North America
- Benefits such as free jump starts, tire changes, fuel delivery, and lock out service

Brochure pictures may be shown with optional equipment.



Discover for yourself how the little things can make a big difference. View the entire family of Triple E products at www.tripleerv.com.



P.O. Box 1230, Winkler, MB
Canada R6W 4C4
Tel: (204) 325-4361
Fax: (204) 325-5241
www.tripleerv.com

Experience the Difference