

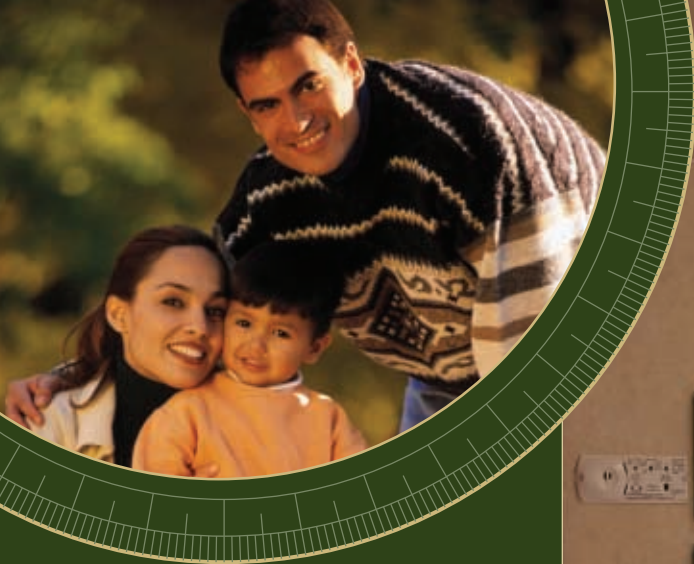
Regency



REGENCY 2004

TAKE FREEDOM *Further*





COME HOME TO FREEDOM

Explore ancient caves. Fish the
afternoon away. Build a grand
sandcastle. Whatever you do,
home will be waiting.

C30G shown with Lapis Blue Décor >>



Endless Appeal

Versatile and easy to drive, with the Regency, the journey is the destination. Known for its good looks, great value, and peppy spirit, this motorhome is truly a family favourite.

With new standard features for 2004 including air conditioning and a microwave, the Regency is a better value than ever before. Consider opting for the XL package to extend the RV season from early spring to late fall with:

- Enclosed, insulated, and heated holding tanks
- Thermal pane windows
- Rear auxiliary heater
- Fabric headliner
- Light package in baggage compartments
- Slide-out battery tray, and more!



Visit www.tripleerrv.com for details on available options.

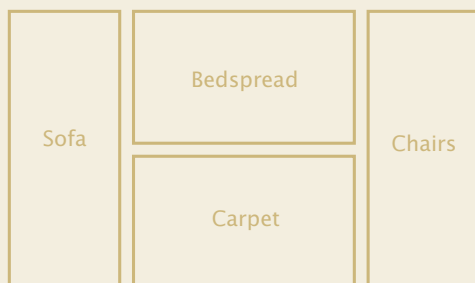


- 1 The roomy dinette easily and quickly converts to a cozy sleeping area.
- 2 The galley is equipped with plenty of counter space so you'll have the room you need – no matter what's on the menu.
- 3 The space saving pantry displays and stores dry goods for quick access. (Available on select models)

GOOD LOOKS



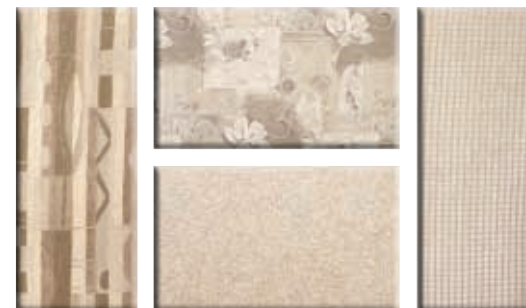
The Regency is equipped with Filon Filoplated smooth exterior sidewalls. Extremely dent and weather resistant, these panels will keep your motorhome looking its best for years to come.



You are able to customize your motorhome with one of four distinct interior design schemes. Developed by a group of professionals, our combinations skillfully coordinate upholstery, carpeting, window treatments, and exterior graphics in a manner that is both especially pleasing to the eye and of uncompromising quality.



Visit www.tripleerv.com for more information on the Regency's features.



Pebble Beach



Enchanted Forest



Lapis Blue



Mulberry Grove

Colours may not be exactly as shown due to the printing process. Please see your dealer for specific colours.

First Class Features

What is it about the Regency that makes it so accommodating? The combination of top quality appliances, clever storage areas, and spacious living design all contribute to the feeling of completeness!

To further enhance your time away from home, consider the following options to personalize your Regency to suit your needs:

- 4.0 KW Onan generator
- Roof rack and ladder
- Exterior shower
- In-shower skylight



- 1 With a residential spring coil quality mattress and relaxing décor, you'll sleep well in the private master bedroom.
- 2 New for 2004 is a classic TV cabinet to keep electronics safely stored when not in use.
- 3 Making the best use of space, the Regency can sleep up to six.
- 4 Raised solid oak cabinet doors enhance the rich oak finish cabinetry.
- 5 Bring it with you! Exterior baggage compartments are surprisingly large and easy to access.

STANDARDS AND OPTIONS

S = Standard O = Option <div>New</div> = New for 2004				C22	C24	C28	C30G				C22	C24	C28	C30G		
VEHICULAR																
Air Conditioning - Chassis								S	S	S	S					
Block Heater								S	S	S	S					
Chassis - Ford 11,500 GVW, E-350, 6.8 L EFI V-10 Triton								S	-	-	-					
Chassis - Ford 14,050 GVW, E-450, 6.8 L EFI V-10 Triton									S	S	S					
<div>New</div>	Chassis - Ford 14,050 GVW, E-450, 6.0 L Power Stroke Diesel								-	O	O	-				
Cover - Continental Cover for Spare Tire (included in XL option)								O	O	-	-					
Cruise Control and Tilt Steering Wheel								S	S	S	S					
Hitch - Trailer Hitch Receiver with Wiring - 350/3,500 lb								S	S	S	S					
Interior Rearview Mirror								S	S	S	S					
Light - High Mounted Rear Stop Light – LED Long Life								S	S	S	S					
Mirrors - Automotive-Style Exterior Mirrors								S	S	S	S					
Power Windows and Door Locks								S	S	S	S					
Rear Airbag Assist Suspension								O	O	O	O					
<div>New</div>	Rust Protection								O	O	O	O				
Seat - Power Driver's Seat								S	S	S	S					
Spare Tire - Crank Down under Floor Mount								-	-	-	S	S				
Spare Tire and Carrier with Vinyl Cover								S	S	-	-					
Tires - Radial Ply								S	S	S	S					
Transmission - Automatic 4-Speed with Overdrive								S	S	S	S					
Undercoating - Chassis								S	S	S	S					
<div>New</div>	Wheel Simulators								S	S	S	S				
CONSTRUCTION																
Aluminium-Framed Vacuum Bonded Insulated Wall & Roof Construction								S	S	S	S					
Floor - Steel-Framed Vacuum Bonded Insulated Floor Construction								S	S	S	S					
Roof - One-Piece EPDM Roof								S	S	S	S					
Sidewalls - FRP "Filon" Sidewalls								S	S	S	S					
Windows - Tinted Radius Cornered Windows								S	S	S	S					
EXTERIOR																
Bumper - Rear Bumper c/w Aluminium Bumper Cover (non-XL models)								S	S	S	S					
Doors - Exterior Flush Radius-Style Baggage Doors								S	S	S	S					
Exterior Shower with Shut-off Valves for Winterizing								O	O	O	O					
Ladder - Roof Rack & Ladder								O	O	O	O					
Light - Porch Light with Interior Wall Switch								S	S	S	S					
Running Boards - Fibreglass Flares & Running Boards								S	S	S	S					
Step - Electric Step (non-XL models only, included in XL option)								O	O	O	O					
Storage - Pass Through Storage Compartment at Rear								-	-	-	S	S				
Window - Front Bunk Window - Thermal Pane								O	O	O	-					
INTERIOR																
Blind - Venetian Blinds in Galley								S	S	S	S					
Cabinet - Storage Cabinets on Sides of Overhead Bunk								S	S	S	S					
<div>New</div>	Cabinet - TV Cabinet with Tambour Doors								S	S	S	S				
Cabinets - Oak Finished Cabinet Construction								S	S	S	S					
Detectors - Electronic Smoke, LP & CO Detectors								S	S	S	S					
Doors - Raised Solid Oak Cabinet Doors								S	S	S	S					
Drapes - Privacy Drape – Cab								S	S	S	S					
Drapes - Privacy Drape – Bedroom								S	S	-	-					
Drawers - Dual Roller Glide Drawers with Travel Lock								S	S	S	S					
Fire Extinguisher - Dry Chemical								S	S	S	S					
Flooring - Carpeted Bedroom & Living Areas								-	-	-	S	S				
Flooring - Vinyl Flooring in Galley								S	S	S	S					
Handle - Oak Assist Handle at Bunk								S	S	S	S					
Magazine Rack - Oak Magazine Rack on Cab Wall								S	S	S	S					
Shades - Pleated Shades								S	S	S	S					
Shelf - Bedroom TV Shelf								-	-	O	O					
FURNITURE																
Bed - Twin Beds								-	-	O	O					
Booth Dinette - Wall Mount Dinette Table with Steel Framing for Seat Belts with 5" Laminated Cushions								S	S	S	S					
Chair - Swivel Cocktail Chair								-	S	-	-					

SPECIFICATIONS

REGENCY 2004	C22	C24
GVWR - lbs (kg)	11,500 (5,216)	14,050 (6,373)
UVW - lbs (kg)	9,167 (4,158)	9,558 (4,336)
NCC - lbs (kg)	2,333 (1,058)	4,492 (2,037)
Wheelbase - inches (mm)	158 (4,013)	158 (4,013)
Length (not incl. spare) - feet (mm)	22'11" (6,985)	24'3" (7,391)
Width - feet (mm)	8'4" (2,534)	8'4" (2,534)
Height (incl. A/C) - feet (mm)	10'8" (3,251)	10'8" (3,251)
Water Tank Cap. - gal (l)	36 (137)	36 (137)
Holding Tank Cap. - gal (l)	64 (243)	64 (243)
Fuel Capacity - gal (l)	55 (208)	55 (208)
Propane Capacity - gal (l)	17.5 (66)	17.5 (66)
Opt. Awning Length - feet (mm)	10' (3,048)	11' (3,353)

REGENCY 2004	C28	C30G
GVWR - lbs (kg)	14,050 (6,373)	14,050 (6,373)
UVW - lbs (kg)	10,666 (4,838)	11,328 (5,138)
NCC - lbs (kg)	3,384 (1,535)	2,722 (1,235)
Wheelbase - inches (mm)	190 (4,826)	208 (5,283)
Length (not incl. spare) - feet (mm)	28'7" (8,712)	30'3" (9,220)
Width - feet (mm)	8'4" (2,534)	8'4" (2,534)
Height (incl. A/C) - feet (mm)	10'8" (3,251)	10'8" (3,251)
Water Tank Cap. - gal (l)	36 (137)	36 (137)
Holding Tank Cap. - gal (l)	64 (243)	64 (243)
Fuel Capacity - gal (l)	55 (208)	55 (208)
Propane Capacity - gal (l)	17.5 (66)	17.5 (66)
Opt. Awning Length - feet (mm)	18' (5,486)	19' (5,791)

NOTE: All capacities in U.S. gallons

GVWR

GROSS VEHICLE WEIGHT RATING means the maximum permissible weight of this motorhome. The GVWR is equal to or greater than the sum of the unloaded vehicle weight (UVW) plus the net carrying capacity (NCC).

UVW

UNLOADED VEHICLE WEIGHT means the weight of the motorhome as built at the factory with full fuel, engine oil, and coolants. The UVW does not include cargo, fresh water, LP gas, occupants, or factory or dealer installed options or accessories.

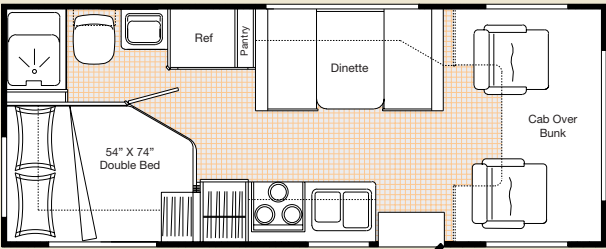
NCC

NET CARRYING CAPACITY means the maximum weight of all occupants, including the driver, personal belongings, food, fresh water, LP gas, tools, tongue weight of towed vehicle, factory and dealer installed accessories, etc., that can be carried by this motorhome. NCC is equal to or less than GVWR minus UVW.

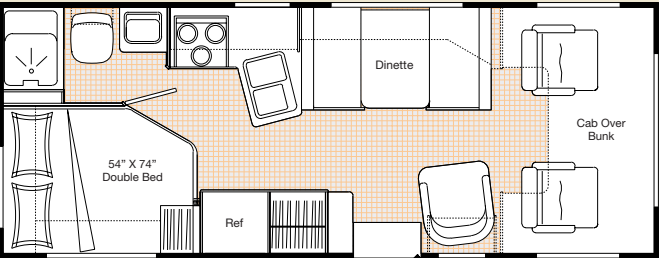
NOTE: Please see your dealer for weights of factory installed options.

FLOOR PLANS

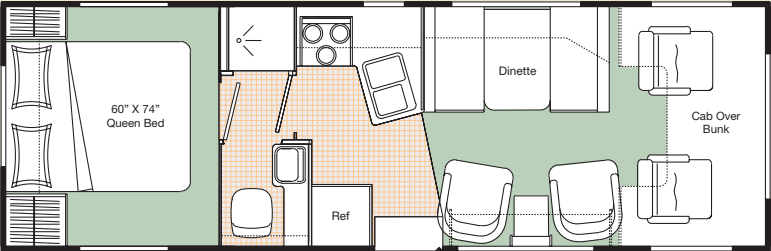
100
200
300
400
500
600



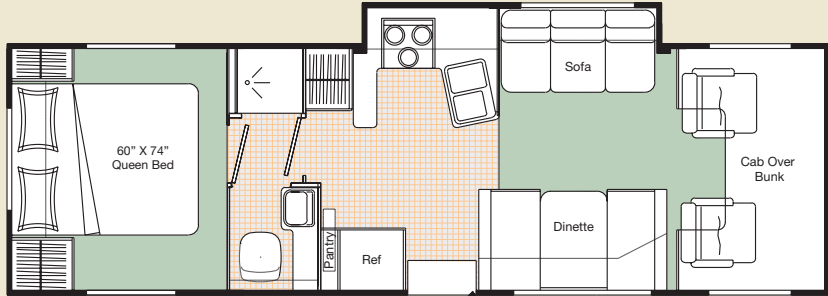
C22



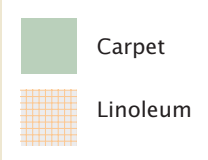
C24



C28



C30G



Product improvement is a continuing process at Triple E Recreational Vehicles. Thus, we reserve the right to change specifications on any or all products without prior notice; errors and omissions excepted. Triple E Recreational Vehicles is under no obligation to undertake modification to units manufactured prior to changes on specifications.

TRIPLE E QUALITY



Unparalleled craftsmanship



Triple E is located in the centre of Canada – in one of the most extreme climates in North America. Customers can thus be confident that our

optional XL package, designed to comfortably extend the RV season, has truly been put to the test.

Much of what you see in our products is built on site to our highest standards. In our plant you'll find an impressive, progressive production facility complete with welding shop, paint shop, fibreglass and mold shop, sewing department, and cabinet manufacturing department.

Structural integrity and

durability are critical in every unit we produce – to the smallest of details. For example, cabinetry is constructed



with screws rather than staples. It's the little things that make a big difference.

All Triple E products are built to CSA (Canadian Standards Association) or RVIA (Recreational Vehicle Industry Association) Standards. Triple E was one of the first RV manufacturers to obtain the ISO 9002 certification – your assurance of the careful construction and high quality materials that are part and parcel of every Triple E unit.

Triple E is proud to offer a
2 YEAR LIMITED WARRANTY
on structure as well as most major components.
Please see your dealer for further details.

ISO 9002
REGISTERED



This combination of labels assures the purchaser that the manufacturer has met or surpassed CSA-CRVA-RVIA standards covering electrical services, gas services, plumbing services, and vehicular safety.

Regency Motorhomes exceed 96 inches in width. In some states, 96 inches is the maximum width of vehicles travelling some or all state roads. It is the responsibility of the owner to be familiar with the road usage laws of the states in which you travel.



P.O. Box 1230, Winkler, MB
Canada R6W 4C4
Tel: (204) 325-4361
Fax: (204) 325-5241
www.tripleerv.com

TAKE FREEDOM *Further*

Brochure pictures may be shown with optional equipment.



Full of possibilities. Full of life. View the entire family of Triple E products at www.tripleerv.com.