

TOPAZ 2004



Topaz SE



TAKE FREEDOM *Further*



STANDARDS AND OPTIONS

S = Standard O = Option

RUNNING GEAR / CHASSIS

	T260SE	T274SE	T281SSSE	F252SSSE	F243SE
Axle - EZ Lube Straight Tandem with 4 Wheel Electric Brakes	O	O	S	S	O
Axle - EZ Lube Tandem Drop with 4 Wheel Electric Brakes	S	S	-	-	S
Chassis - High Strength Structural Tubular Steel	S	S	S	S	S
Landing Gear - Electric Front Snap Jacks	-	-	-	O	O
Landing Gear - Manual Front Jacks	-	-	-	S	S
Shock Absorbers	O	O	O	O	O
Slide-out System - Dual Rack & Pinion with Override	-	-	S	S	-
Spare Tire - 15" - with Bumper Mount Bracket	O	O	O	O	O
Stabilizer Jacks - Front	O	O	S	-	-
Stabilizer Jacks - Rear	O	O	S	S	O
Tires - Radial Ply	S	S	S	S	S
Wheels - 15" - White Spoke Steel Modular	S	S	S	S	S

CONSTRUCTION

Aluminium Exterior	S	S	S	S	S
Fibreglass Insulated Floor and Roof	S	S	S	S	S
Roof - Domed One-Piece EPDM Roof with Drip Rail and Runoff Spout	S	S	S	S	S
Walls - Fibreglass Insulated Walls	S	S	S	S	S
Windows - Larger Dinette Window with Cone Mounted Table	S	S	-	-	S
Windows - Radius Corner Torque in Bedroom	S	S	S	S	S
Windows - Radius Corner Slider	S	S	S	S	S

EXTERIOR

Awning - Colour Coordinated - A&E Sun Chaser	O	O	O	O	O
Battery Box Mounting Brackets	S	S	S	-	-
Battery Compartment - Space for 2 Batteries	-	-	-	S	S
Doors - Radius Corners on Entrance Door and Flush Type Baggage Doors with Locks	S	S	S	S	S
Exterior Shower	O	O	O	O	O
Lighting - Patio Light with Interior Wall Switch	S	S	S	S	S
Lighting - Standard Exterior Clearance Light Package	S	S	S	S	S
Receptacle - G.F.I. Protected 120 Volt Duplex Patio Receptacle	S	S	S	S	S
Roof Rack & Ladder	O	O	O	O	O
Screen Door - Diagonal Reinforced with Kick Panel	S	S	S	S	S
Skirts - Fibreglass Molded Wheel Skirts	-	-	S	S	-
Step - Retractable Entry Step	S	S	S	S	S
Vent - Manual Roof Vent	S	S	S	S	S

INTERIOR

Bedsprad - Decorative	O	O	O	O	O
Blinds - Venetian Window Coverings	S	S	S	S	S
Cabinet - Overhead Storage in Slide-out Area with Spring Struts	-	-	O	O	-
Cabinet Doors - Oak Flat Panel with Solid Oak Frame	S	S	S	S	S
Cabinets - Oak Finish Cabinet Construction	S	S	S	S	S
Drawer Glides - Dual Roller Glide Drawers with Travel Locks	S	S	S	S	S
Fire Extinguisher - Dry Chemical	S	S	S	S	S
Flooring - Carpet in Bedroom with Foam Underlay	-	-	-	S	S
Organizer - Vinyl Pouch Mounted to Wall in Bunks	-	O	O	O	O
Shelf - for TV in Bedroom	O	O	O	O	O
Smoke and LP Detectors - Electronic	S	S	S	S	S
Valance - Wrapped Window Treatment in Bedroom and Living Area	S	S	S	S	S

FURNITURE

Bed - Jack and Jill Bed at Rear with Bunk Windows	-	O	-	O	O
Beds - Bunks with Full Height Wardrobe with Drawers	-	S	-	S	S
Booth Dinette	S	S	S	S	S
Mattress - Innerspring (60" x 74")	S	S	S	S	S
Sofa - Jackknife Sofa	S	S	S	S	S

GALLEY

Countertop & Dinette Table - Laminate	S	S	S	S	S
Knife Rack (Built In)	S	S	S	S	S
Microwave Oven	O	O	O	O	O
Range - Three Burner with High Output Burner with Oven	S	S	S	S	S
Range Hood with 12 V Light & Exhaust Fan	S	S	S	S	S
Refrigerator - Dometic LP/Electric 6 cu ft	S	S	S	S	S
Sink - Acrylic Deep Bowl Sink	S	S	S	S	S

LAVATORY

Medicine Cabinet - with Mirror	S	S	S	S	S
Shower Curtain	S	S	S	S	S
Toilet - Hand Flush	S	S	S	S	S
Tub/Shower Enclosure - 2 Piece ABS	S	S	S	S	S
Vent - 12 V Power Roof Exhaust	S	S	S	S	S

ENTERTAINMENT

Prewire - for TV Antenna with Booster	S	S	S	S	S
Prewire - Including Speakers for Stereo Options Listed	S	S	S	S	S
Stereo - AM/FM CD (12 V)	O	O	O	O	O
TV Antenna - Roof Top Retractable	O	O	O	O	O

HEATING, VENTILATING AND AIR CONDITIONING

Air Conditioner - 13,500 BTU Roof	O	O	O	O	O
Furnace - Forced Air D.S.I. with Thermostat (31,000 BTU) with In Floor Ducting	S	S	S	S	S

ELECTRICAL

Battery - RV Battery	O	O	O	O	O
Converter - Electronic with Battery Charger and 12 V Fuse Panel (45 Amp)	S	S	S	S	S
Lighting - Wall Switched Interior Lights	S	S	S	S	S

PLUMBING AND LP SYSTEMS

By Pass Valve - Water Heater	S	S	S	S	S
Monitor Panel - Grey, Black, Fresh Water and Battery Charge	S	S	S	S	S
Tank LP - Dual 30 lb with Change Over Regulator	S	S	S	S	S
Waste Termination - Single Point	S	S	S	S	S
Water Heater - LP Fast Recovery DSI 6 USC	S	S	S	S	S

Come Home to Freedom

See more. Do more. Smile more. Leave the routine at home and rejuvenate your leisure time.

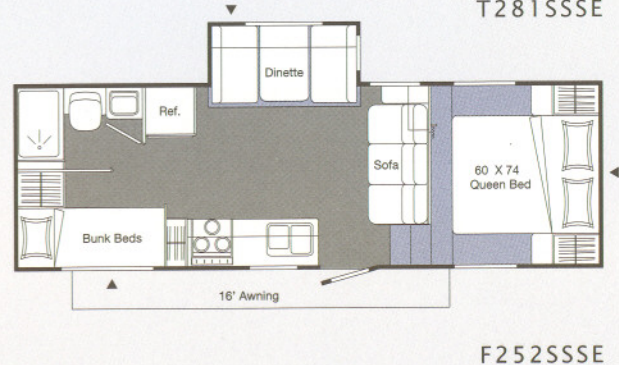
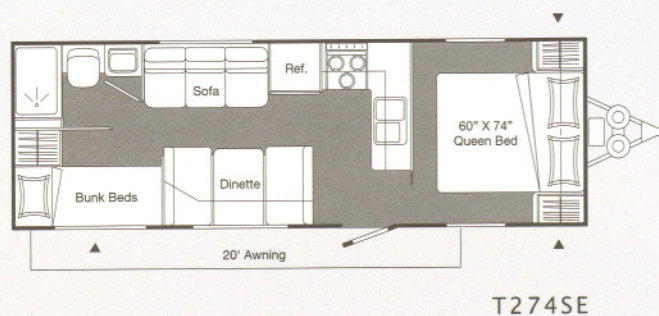
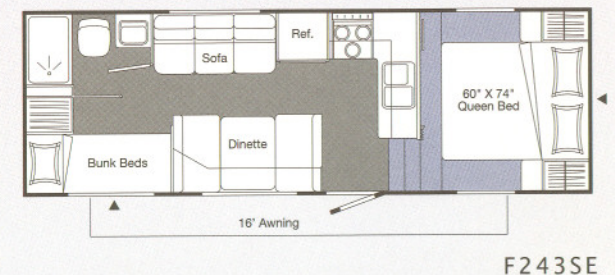
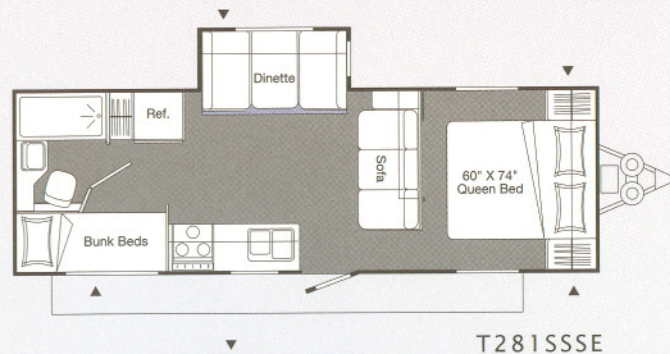
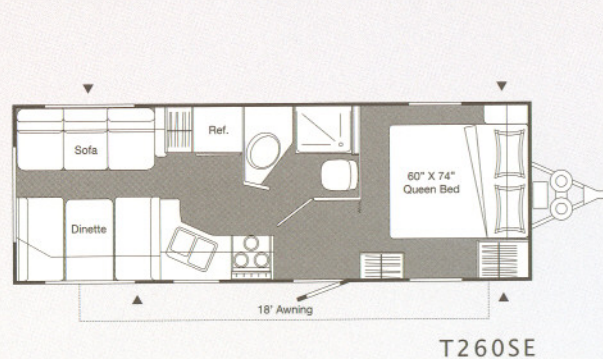
The 2004 Topaz SE Fifth Wheels and Travel Trailers were designed for active living and all around comfort. Available in a wide range of floor plans, this versatile and fun loving Triple E model is a great value!

Customize your Topaz with great optional features including:

- Exterior shower
- Roof rack & ladder
- TV shelf in bedroom
- Air conditioner



FLOOR PLANS



SPECIFICATIONS

	T260LE	T274LE	T281SSSE	F243SE	F252SSSE
GVWR - lbs (kg)	7,500 (3,401)	7,500 (3,401)	7,500 (3,401)	7,300 (3,311)	7,800 (3,537)
UVW - lbs (kg)	4,671 (2,119)	5,234 (2,375)	TBA	5,084 (2,306)	5,882 (2,674)
Hitch/Pin Weight - lbs (kg)	506 (230)	684 (310)	TBA	998 (453)	945 (429)
NCC-LBS (kg)	2,829 (1,283)	2,266 (1,026)	TBA	2,216 (1,005)	1,918 (863)
Tire Size	ST225/75R-15C	ST225/75R-15C	ST225/75R-15C	ST225/75R-15C	ST225/75R-15C
Length - ft (mm)	26'7" (8,098)	27'7" (8,407)	28'4" (8,636)	24'8" (7,519)	25'6" (7,780)
Width - ft (mm)	8'0" (2,438)	8'0" (2,438)	8'0" (2,438)	8'0" (2,438)	8'0" (2,438)
Height (not incl. A/C) - ft (mm)	9'1" (2,768)	9'1" (2,768)	9'8" (2,945)	9'4" (2,844)	9'8" (2,945)
* Water Tank Cap. - gal (l)	50 (190)	50 (190)	50 (190)	50 (190)	50 (190)
Grey Waste Cap. - gal (l)	32 (121)	32 (121)	32 (121)	32 (121)	32 (121)
Solid Waste Cap. - gal (l)	32 (121)	32 (121)	32 (121)	32 (121)	32 (121)
Propane Cap. - gal (l)	17 (64.8)	17 (64.8)	17 (64.8)	17 (64.8)	17 (64.8)
Opt. Awning Length - ft (mm)	18' (5,486)	20' (6,096)	TBA	16' (4,876)	16' (4,876)

*Includes Water Heater NOTE: All capacities in US gallons

GVWR

GROSS VEHICLE WEIGHT RATING means the maximum permissible weight of this trailer/fifth wheel. The GVWR is equal to or greater than the sum of the unloaded vehicle weight (UVW) plus the net carrying capacity (NCC).

UVW

UNLOADED VEHICLE WEIGHT means the weight of the trailer/fifth wheel as built at the factory with full fuel, engine oil, and coolants. The UVW does not include cargo, fresh water, LP gas, occupants, or factory or dealer installed accessories.

NCC

NET CARRYING CAPACITY means the maximum weight of all occupants, including the driver, personal belongings, food, fresh water, LP gas, tools, tongue weight of towed vehicle, factory and dealer installed accessories, etc., that can be carried by this trailer/fifth wheel. NCC is equal to or less than GVWR minus UVW.

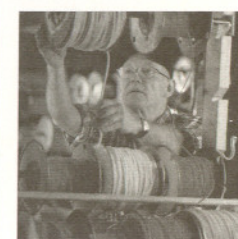


P.O. Box 1230, Winkler, MB
Canada R6W 4C4
Tel: (204) 325-4361
Fax: (204) 325-5241
www.tripleerv.com



Full of possibilities. Full of life. View the entire family of Triple E products at www.tripleerv.com.

TAKE FREEDOM *Further*



All Triple E products are built to CSA (Canadian Standards Association) or RVIA (Recreational Vehicle Industry Association) Standards. Triple E was one of the first RV manufacturers to obtain the ISO 9002 certification – your assurance of the careful construction and high quality materials that are part and parcel of every Triple E unit.

Triple E is proud to offer a

2 YEAR LIMITED WARRANTY

on structure as well as most major components.

Please see your dealer for further details.



This combination of labels assures the purchaser that the manufacturer has met or surpassed CSA-CRVA-RVIA standards covering electrical services, plumbing services, and vehicular safety.

Product improvement is a continuing process at Triple E Recreational Vehicles. Thus, we reserve the right to change specifications on any or all products without prior notice; errors and omissions excepted. Triple E Recreational Vehicles is under no obligation to undertake modification to units manufactured prior to changes on specifications.

Brochure pictures may be shown with optional equipment.