

# Embassy





[www.tripleerv.com](http://www.tripleerv.com)

2



Drivers will appreciate being behind the wheel of Embassy's automotive-styled cockpit, fully loaded with safety features such as the rearview camera monitor and big button radio complete with Sirius satellite capabilities.



## *Travel in deluxe comfort.*

Combine the precious comforts of home with your exciting life on the road. The well-appointed Embassy has been thoughtfully designed and professionally styled with fine detail in mind – from greater storage space to generous living area. Standard features such as a powerful Onan generator, top quality appliances and fixtures plus a 20" TV over the cab are some of the many reasons why you'll be calling Embassy your home sweet motor home.





Embassy's contemporary decor is highlighted with ginger spice oak cabinetry. Upgrade your interior with the optional Interior Glamour Package (as shown with Zion Forest decor).



The roomy master bedroom is elegantly styled with a decorative bedspread featuring matching throw pillows and padded headboard. The pleated day/night shade complete with blackout allows in or blocks out light as needed while assuring privacy.



Embassy's ergonomically designed cockpit easily converts into living room comfort. Adjustable high back captain chairs are perfectly designed for entertaining or relaxation while watching the flat screen TV.

New 07

- Ginger spice oak cabinetry
- Flat ceiling with padded vinyl headliner
- Optional Interior Glamour Package
- Welded aluminium framed walls, Triple E's exclusive thermal break wall technology
- Sealed thermal pane windows
- Enclosed, insulated and heated holding tanks

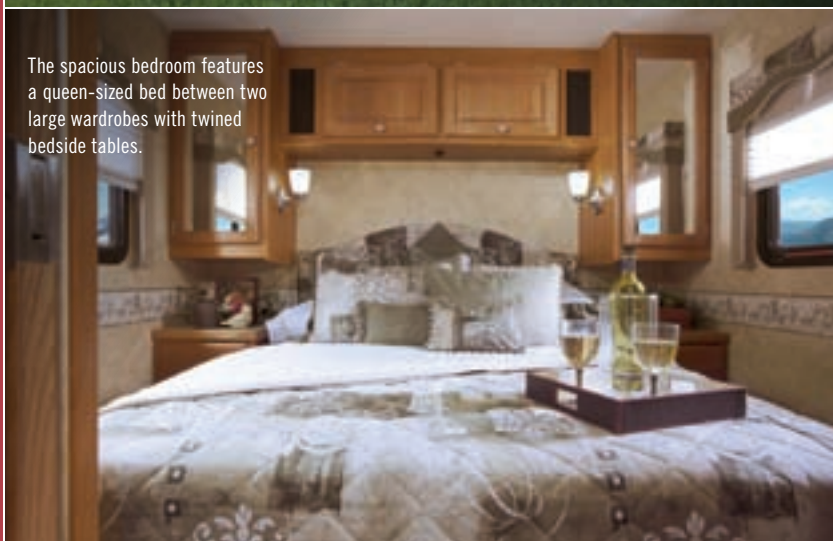
3

[www.tripleeerv.com](http://www.tripleeerv.com)

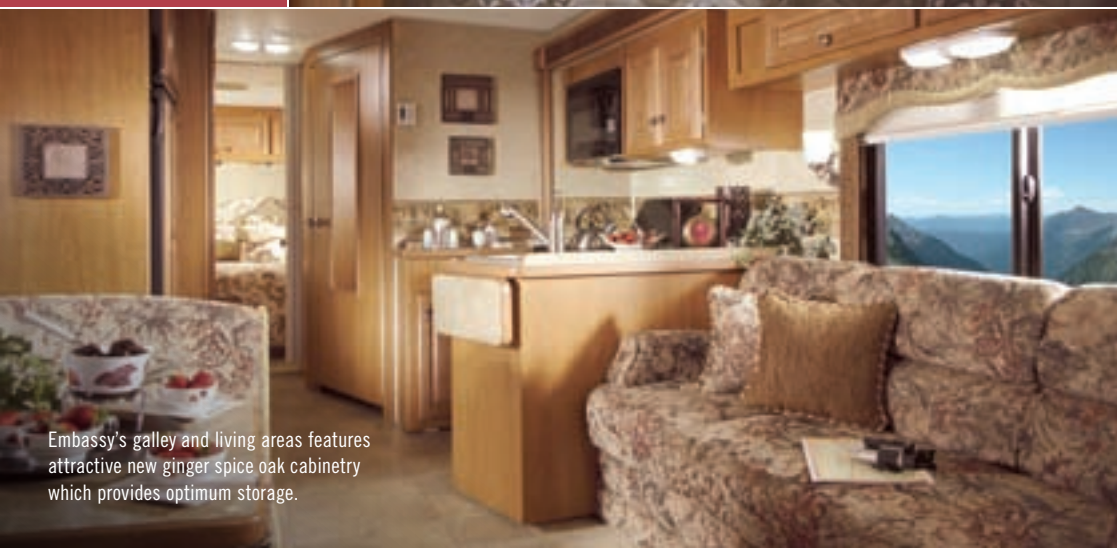




Insulated aluminium baggage doors with gas struts and slam latches allow easy access to Embassy's exterior storage compartments.



The spacious bedroom features a queen-sized bed between two large wardrobes with twined bedside tables.



Embassy's galley and living areas features attractive new ginger spice oak cabinetry which provides optimum storage.

## COLOUR OPTIONS

	Falling Leaf	Northern Sky	Rushmore	Zion Forest
Sofa				
Accent				
Captain Chairs				
Carpet				
Bedsread				

Exterior



## FLOOR PLANS

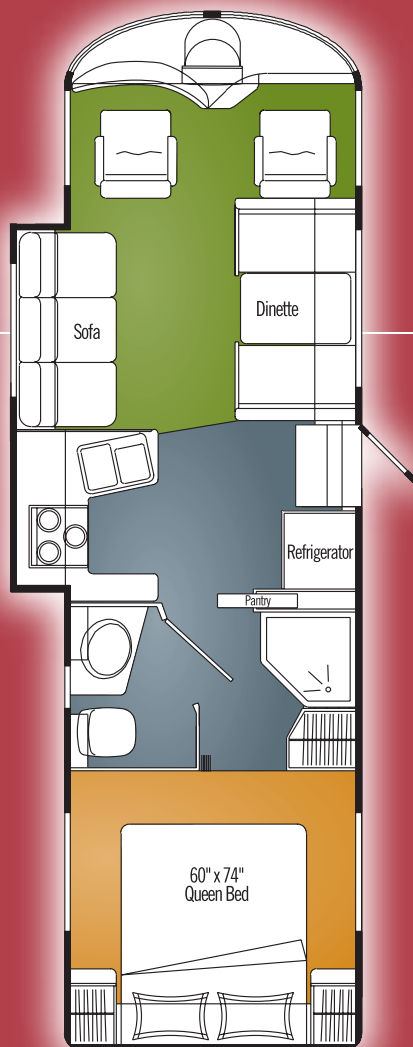
Embassy can be personalized to your own tastes with your choice of four interior décor combinations and one of three available floor plans. Each design motif has been selected by professional interior designers to skillfully coordinate all visual elements for an overall effect that is both warm and inviting.

Visit [www.tripleerv.com](http://www.tripleerv.com) for more information on available options.

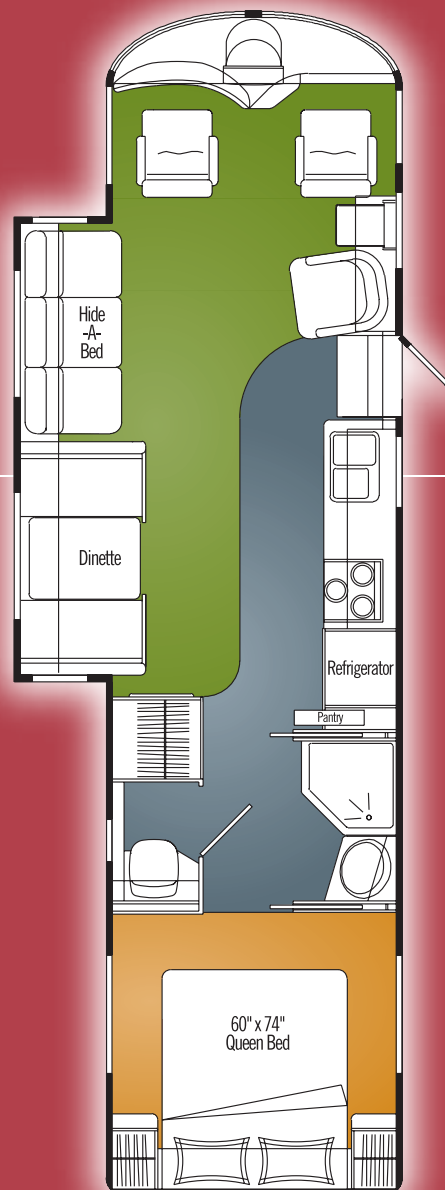


Ginger Spice Oak Cabinetry

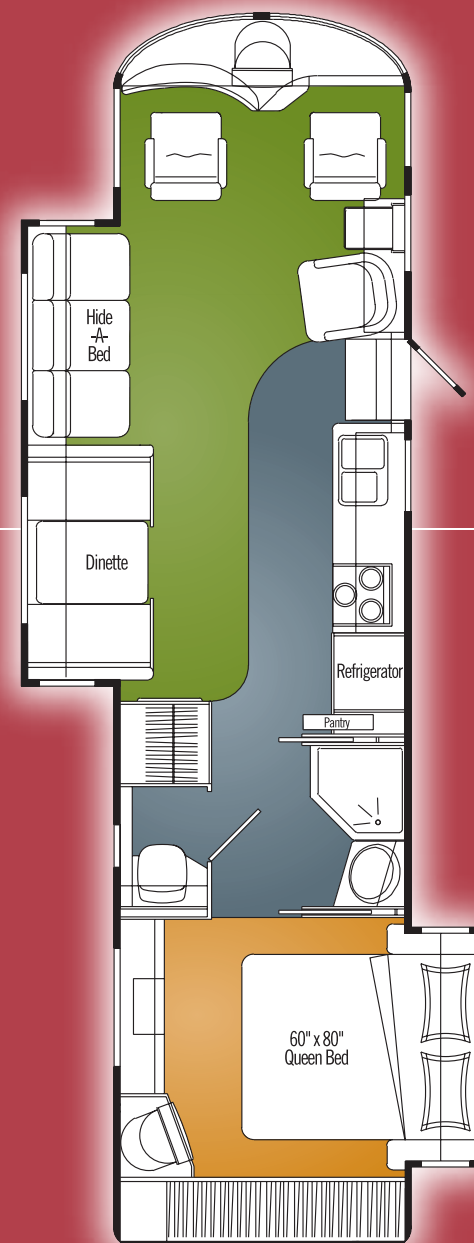
Embassy is equipped with Medallion smooth exterior sidewalls. Extremely dent and weather resistant, these panels will keep your motorhome looking its best for years to come.



A30G



A34F



A36FB

Carpet

Optional Carpet

Linoleum

## SPECIFICATIONS

### EMBASSY 2007

	A30G	A34F	A36FB
GVWR – lb. (kg)	18,000 (8 164)	20,700 (9 392)	20,700 (9 392)
UVW – lb. (kg)	15,211 (6 902)	16,395 (7 439)	17,228 (7 817)
NCC – lb. (kg)	2,789 (1 262)	4,305 (1 953)	3,472 (1 575)
Wheelbase – in. (mm)	190 (4 826)	228 (5 791)	228 (5 791)
Length* – ft. (mm)	31' 1" (9 476)	34' 7" (10 541)	36' 2" (11 022)
Width – ft. (mm)	8' 4" (2 534)	8' 4" (2 534)	8' 4" (2 534)
Height – ft. (mm)	11' 9" (3 581)	11' 9" (3 581)	11' 9" (3 581)
Water Tank Capacity – U.S. gal. (L)	49 (186)	76 (285)	76 (285)
Holding Tank Capacity – U.S. gal. (L)	78 (295)	78 (295)	78 (295)
Fuel Capacity – U.S. gal. (L)	75 (284)	75 (284)	75 (284)
Propane Capacity – U.S. gal. (L)	25.3 (95.8)	25.3 (95.8)	25.3 (95.8)

\*Includes Air Conditioner

### GVWR (GROSS VEHICLE WEIGHT RATING)

The maximum permissible weight of this motorhome. The GVWR is equal to or greater than the sum of the unloaded vehicle weight (UVW) plus the net carrying capacity (NCC).

### UVW (UNLOADED VEHICLE WEIGHT)

The weight of the motorhome as built at the factory with full fuel, engine oil, and coolants. The UVW does not include cargo, fresh water, LP gas, occupants, factory or dealer installed accessories.

### NCC (NET CARRYING CAPACITY)

The maximum weight of all occupants, including the driver, personal belongings, food, fresh water, LP gas, tools, tongue weight of towed vehicle, factory and dealer installed accessories, etc., that can be carried by this motorhome. (NCC is equal to or less than GVWR minus UVW.) Please see your dealer for weights of factory installed options.

## STANDARDS AND OPTIONS

### CHASSIS AND SUSPENSION

Airbag Assist Rear Suspension			
Block Heater			
Chassis – Ford V-10, 6.8 L V10 Triton, 18,000 lb. GVW, 190" Wheelbase			
Chassis – Ford V-10, 6.8 L V10 Triton, 20,700 lb. GVW, 228" Wheelbase			
Concealed Locking Fuel Filler			
Cruise Control and Tilt Steering Wheel			
Hitch – Trailer Hitch Receiver with wiring and plug, Class III 500/5000 lb.			
Transmission – Five Speed Automatic with Overdrive with Transmission Cooler			
Wheel Simulators			

### DRIVERS AREA CONVENIENCES

Air Conditioner – Chassis			
Ash Tray – Inserts into Cup Holder in Centre Console			
Cameras – Side Turn Cameras			
Mirrors – Heated Remote Mirrors			
Power Seat – Six-Way Power Drivers Seat			
Rear View Camera/Monitor , Black and White			
Seats – Optima Vinyl Reclining Driver's and Passenger's Swivel Bucket Seats			
Switch – Battery Boost Switch			
Wipers – Wet Arm Windshield Wipers with Intermittent			

### VEHICULAR

Bumper – Steel Reinforced Rear Bumper			
Jacks – HWH Hydraulic Levelling Jacks with Joystick Control			
Light – High Mounted Stoplight, LED Long Life			
Lights – Halogen Automotive Driving Lights			
Undercoating – Automotive Type			

### CONSTRUCTION

Baggage Doors – Aluminium Baggage Doors with Gas Struts and Slam Latch			
Floor – Vacuum Bonded Insulated Steel Framed Floor Construction			
Galvanized Luggage Compartments with Cargo Lining			
Gelcoat Fibreglass Front and Rear Masks			
Roof – Domed EPDM Roof with Rain Gutters and Down Spouts			
Steel Cab Floor, Firewall and Dash Structure			
Vacuum Bonded Aluminium Framed Insulated Roof Construction			
Vacuum Bonded Aluminium Framed Insulated Sidewall with Thermal Break			
Vacuum Bonded Medallion FRP Sidewalls			
Windows – Tinted Radius Corner Windows			

### EXTERIOR

Door – Screened Entry Door with Integral Deadbolt Lock			
Exterior Assist Handle – Monogrammed			
Ladder – Exterior Ladder			
Light – Porch Light with Yellow Lens			
Painted Skirts			
Step – Electric Entry Step			

### INTERIOR

Blind – Venetian Blind in Galley			
Borders – Wall Borders in Galley and Bedroom Areas			
Ceiling – Flat with Padded Vinyl Headliner			
Detectors – Electronic Smoke, LP and CO Detectors			
Doors – Raised Solid Oak Cabinet Doors			
Drawers – Full Extension Ball Bearing Drawer Tracks			
Fire Extinguisher – Dry Chemical			
Flooring – Carpet in Living Area as per Floor Plan			



		A30G	A34F	A36FB
<b>INTERIOR (CONTINUED)</b>				
	Flooring – Linoleum in Living Area, Galley and Lavatory and Carpet in Bedroom Areas	S	S	S
07	Flooring – Tile Look Laminate Flooring in Galley and Shower Area with Carpet in Living Area	0	0	0
	Shades – Day/Night Pleated Shades	S	S	S
	Slide-Out – Electric Slide-Out System in Bedroom	-	-	S
	Slide-Out – HWH Hydraulic Slide-Out System in Living Area	S	S	S
<b>FURNITURE</b>				
	Booth Dinette – Steel Framing for Seat Belts	S	-	-
07	Booth Dinette with Underseat Storage – Laminate with Solid Oak Edge and Roll-Out Underseat Storage	-	S	S
	Cabinet – Refreshment Centre	-	0	0
	Chair – Optima Leather Captains Chair on Passenger Side	-	S	S
	Flip Table – Oak	-	S	S
	Hide-A-Bed – Cloth	-	S	S
07	Mattress – Air Coil Mattress Upgrade on Hide-A-Bed (with 110 Volt Air Pump)	-	0	0
	Sofa – Cloth Jackknife Sofa with Bayonet Arms	S	-	-
<b>GALLEY</b>				
	Bi-fold Range Cover	S	S	S
	Convection Microwave – OTR with Light and 110 Volt Vent Fan with Cooktop and Drawers ILO Oven	0	-	-
07	Countertop – Laminate Counter with Solid Oak Edge with Acrylic Sink and Cutting Board Sink Cover	S	S	S
	Faucet – Brushed Nickel Galley Faucet with Pull-Out Sprayer	S	S	S
	Microwave – OTR with Light and Vent Fan	S	-	-
	Microwave Oven	-	S	S
	Range – 3 Burner Cooktop with High Output Burner and 22" Oven	S	S	S
	Range Hood with Monitor Panel and Light	-	S	S
07	Refrigerator – Dometic LP/Electric 9 cu. ft. with Temp Control	S	S	S
<b>LAVATORY</b>				
	Shower – Neo Angle Shower with Glass Doors	S	S	S
07	Sink – Acrylic Sink in Laminate Counter with Laminate Edge	S	S	S
07	Skylight – Residential Neo Angle in Shower	S	S	S
07	Toilet – Sealand Traveller Lite with Sprayer, China, Foot Flush	S	S	S
	Window in Toilet Room	S	S	S
<b>BEDROOM</b>				
	Bedsread – Decorative Bed Spread and Throw Pillows	S	S	S
	Headboard – Fabric Wrapped Deluxe Headboard	S	S	S
	Make Up Table in Bedroom	-	-	S
	Mattress – Innerspring 60" x 74"	S	S	-
07	Mattress – Innerspring 60" x 80"	-	-	S
	Shades – Day/Night Pleated with Blackout	S	S	S
	Stool for Make-Up Table	-	-	0
<b>ENTERTAINMENT</b>				
	CD Changer – 10 Stack CD Changer	0	0	0
	Radio Monoplex System – Switching for Rear Bedroom Speakers	S	S	S
07	Satellite Dish – Winegard with Electronic Elevation Sensor	0	0	0
	Satellite Radio – Pre-Wire Including Satellite Antenna (subscription not included, N/A with AM/FM/CD/Cassette Option)	0	0	0
07	Stereo – AM/FM Weather Band Receiver with Cassette/CD Player with Big Button	0	0	0
	Stereo – Sirius Ready AM/FM Weather Band Receiver with CD Player in Dash with Big Buttons	S	S	S
	Telephone and Cable TV Hook-Up – Exterior	S	S	S
	TV – 20" Flat Screen Colour Stereo with Remote in Bedroom	-	-	S
	TV – 20" Flat Screen Colour Stereo with Remote in Front Overhead Cabinet	-	-	S
	TV – DC 13" Colour with Remote in Cabinet in Bedroom	0	0	-
	TV Antenna – Roof Top Retractable with Booster	S	S	S

		A30G	A34F	A36FB
<b>HEATING VENTILATING AND AIR CONDITIONING</b>				
07	Air Conditioner – Centrally Ducted 13,500 BTU with Heat Strip and Remote Ducted Return Air	S	S	S
07	Air Conditioning – Dual Ducted 2 x 13,500 Roof Air with Selector Switch with Remote Return Air	-	0	0
	Fan – Reversible Thermostatically Controlled Fantastic Fan in Galley or Living Area ILO Manual Vent	0	0	0
	Furnace – Forced Air Furnace, 35,000 BTU	0	S	S
	Vent – 12 Volt Power Roof Exhaust in Lavatory	S	S	S
	Vent – Manual Screened Roof Vent in Galley or Living Area and Bedroom	S	S	S
<b>ELECTRICAL</b>				
	30 Amp Electrical Service	S	S	S
07	Batteries – 6 Volt Deep Cycle Auxiliary (x2)	S	S	S
	Battery Tray – Coach Batteries on Slide-Out Tray	S	S	S
	BIRD – Bidirectional Isolator Relay Delay Battery Charging	S	S	S
	Converter – 12/120 Volt, 55 Amp with Charger and Auto Changeover Switch	S	S	S
	Generator – 4.0 KW Onan MicroQuiet	S	S	S
	Plug – 12 Volt Power Plug-In Dash	S	S	S
	Receptacle – Patio GFI Receptacle	S	S	S
07	Switch – Coach Battery Disconnect	S	S	S
<b>PLUMBING AND LP SYSTEMS</b>				
	Exterior Shower with Shut-Off Valves for Winterizing	S	S	S
	LP Tank – Under Floor Mounted	S	S	S
07	Roughed in Plumbing for Washer Dryer	-	S	S
	Water Filter – Faucet in Galley	S	S	S
	Water Heater – 6 USG Electronic Ignition LP/Electric/Motoraid	S	S	S
	Water Heater By-Pass Valve	S	S	S
<b>SYSTEMS</b>				
07	Washer/Dryer (vented)	-	0	0
<b>OPTIONAL AWNING PACKAGES</b>				
	A&E 9000 Acrylic Patio Awning with Aluminium Weather Shield (length shown)	16	19	19
	Weathershield Equipped A&E Elite Slide Topper (number of awnings shown)	1	1	2
<b>PACKAGES</b>				
	XL Package: Enclosed/Insulated/Heated Holding Tanks, Light Package in Baggage Compartment, Rear Auxiliary Automotive Heater, Tinted Thermal Pane Windows	S	S	S
	Customer Value Package (Mandatory Option): 15,000 BTU with Heat Strip Air Conditioner (Dual Roof Air Option will be 1 x 15,000 and 1 x 13500 BTU), Airbag Assist Suspension (Front), CB Antenna (includes Coax Lead-In Under Dash), DVD/VCR Combination Unit, Reversible Fantastic Thermostatically Controlled Ceiling Fan (Bedroom) ILO Manual Vent, Chrome Cockpit Ventilating Fans with Dash Switch, Coordinated Pillows for Living Area, Pre-Wire Satellite Dish (with 12 Volt Power, Ground, RG-6 Coax and Fish Wire) and Switch Box, Pre-Wire Satellite Dish (with 12 Volt Power, Ground, RG-6 Coax and Fish Wire) and Switch Box, Oak Framed Raised Panel Refrigerator Inserts, Rust Protection	M	M	M
07	Interior Glamour Package: Solid Surface Counter in Galley with Stainless Steel Undermount Sink and Solid Surface Bi-Fold Range Cover, Fluorescent Lighting in Aisle in Living Area, Solid Surface Dining Table and Vanity Edging ILO Solid Oak, Tile Look Laminate Floor Upgrade (Galley and Shower Area) ILO Linoleum	-	0	0
	Factory PDI	0	0	0
07	New for 07 S Standard O Optional M Mandatory			

## ***TWO YEAR LIMITED WARRANTY***

Triple E is proud to offer a two year limited warranty on structure as well as most major components. Please see your dealer for further details.

## ***COACH NET***

Triple E is a proud partner of Coach Net, an extensive support program providing complete and fully paid roadside assistance, emergency road service, and special warranty support benefits that follow you throughout Canada and the U.S. Service is free for the first year of ownership and available at a nominal fee for subsequent years.

### ***COACH NET'S 24-HOUR CUSTOMER CARE***

- Emergency roadside assistance, including tow vehicle
- Toll free technician hotline for operation and service support
- Toll free nationwide service appointment assistance
- Free custom trip routing and colour maps
- Warranty service at over 6,800 locations throughout North America
- Benefits such as free jump starts, tire changes, fuel delivery and lock-out service



**Triple E Recreational Vehicles** P.O. Box 1230, Winkler, Manitoba, Canada R6W 4C4 Telephone: (204) 325-4361 Fax: (204) 325-5241

Triple E Recreational Vehicles meet or surpass CSA-CRVA-RVIA standards covering electrical services, gas services, plumbing services and vehicular safety. Embassy Motorhomes exceed 96" in width. In some states, 96" is the maximum width of vehicles travelling some or all state roads. It is the responsibility of the owner to be familiar with the road usage laws of the states in which you travel. Product improvement is a continuing process at Triple E Recreational Vehicles. Thus, we reserve the right to change specifications on any or all products without prior notice; errors and omissions excepted. Triple E Recreational Vehicles is under no obligation to undertake modification to units manufactured prior to changes on specifications. Brochure pictures may be shown with optional equipment. Colours may not be exactly as shown due to the printing process. Please see your dealer for specific colours.

