


Commander 2008

Follow your dream

COMMANDER 2008





Choose one of four stunning decors featuring either Natural Cherry or Ginger Spice solid wood finishes. Travellers can recline in ultra leather chairs while the cook prepares delectable delights in the open gourmet kitchen.

Escape the Everyday

Follow your dreams along the open road in the luxurious Commander. Plush upholstery and fabrics, along with finely crafted cabinetry and woodwork will have you feeling at home regardless of the length of time you travel. The journey itself becomes part of the destination in the remarkably spacious, luxuriously appointed Commander.

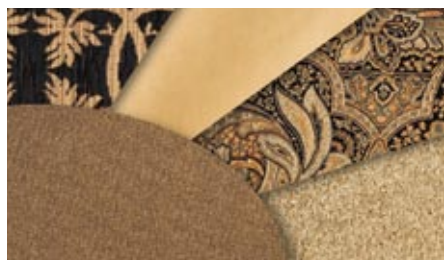
Make It Yours



Whistler Lodge



Sundance



Masterpiece



Egyptian Sand



Ginger Spice Oak



Natural Cherry

Designed for ultimate convenience, including durable Corian® counter-tops and modern appliances, you'll be ready to tackle any recipe with ease and style in this spacious kitchen.



Start your day with a refreshing shower in Commanders' thoughtfully designed bathrooms.



Replenish body and spirit with a restful night's sleep on a queen sized bed. The master bedroom features rich decorative bed coverings and accents. As illustrated, this A3202FB bedroom offers a large wardrobe with an open dressing area and abundant storage.





Specifications

Commander 2008	A3202FB Ford Chassis	A3202FB WCC Opt. Chassis	A3202FB Fred Opt. Chassis	A3509FB Ford Chassis	A3509FB WCC Opt. Chassis	A3509FB Fred Opt. Chassis	A3710FB WCC Chassis	A3710FB Fred Opt. Chassis	A3711FB WCC Chassis	A3711FB Fred Opt. Chassis	A3712FB WCC Chassis	A3712FB Fred Opt. Chassis
GVWR-LBS(KG)	22000(10000)	22000(10000)	26000(11793)	22000(10000)	22000(10000)	26000(11793)	24000(10909)	26000(11793)	24000(10909)	26000(11793)	24000(10909)	26000(11793)
UVW-LBS(KG)	18195(8251)	18735(8498)	TBD	18686(8476)	19228(8740)	TBD	19674(8924)	21770(9874)	19736(8971)	21832(9902)	20117(9125)	22213(10075)
NCC-LBS(KG)	3805(1726)	3265(1481)	TBD	3314(1503)	2772(1260)	TBD	4326(1985)	4230(1918)	4264(1938)	4168(1890)	3883(1761)	3787(1717)
WHEELBASE-IN(mm)	208(5283)	208(5283)	208(5283)	228(5791)	228(5791)	228(5791)	242(6147)	242(6147)	242(6147)	242(6147)	242(6147)	242(6147)
LENGTH-FT(mm)	32'7"(9932)	32'7"(9932)	32'7"(9932)	34'3"(10439)	34'3"(10439)	34'3"(10439)	36'10"(11227)	36'10"(11227)	36'10"(11227)	36'10"(11227)	36'10"(11227)	36'10"(11227)
WIDTH-FT(mm)	8'4"(2534)	8'4"(2534)	8'4"(2534)	8'4"(2534)	8'4"(2534)	8'4"(2534)	8'4"(2534)	8'4"(2534)	8'4"(2534)	8'4"(2534)	8'4"(2534)	8'4"(2534)
HEIGHT Incl.A/C-FT(mm)	12'3"(3734)	12'4"(3759)	12'4"(3759)	12'3"(3734)	12'4"(3759)	12'4"(3759)	12'4"(3759)	12'4"(3759)	12'4"(3759)	12'4"(3759)	12'4"(3759)	12'4"(3759)
WATER TANK CAP.-*-GAL(L)	84(319)	84(319)	84(319)	88(333)	88(333)	88(333)	88(333)	88(333)	88(333)	88(333)	88(333)	88(333)
WATER HEATER	9(34)EQ	9(34)EQ	9(34)EQ	9(34)EQ	9(34)EQ	9(34)EQ	10(37.8)	10(37.8)	10(37.8)	10(37.8)	10(37.8)	10(37.8)
BLACK HOLDING TANK CAP.-GAL(L)	39(147.4)	39(147.4)	39(147.4)	39(147.4)	39(147.4)	39(147.4)	42(158.8)	42(158.8)	42(158.8)	42(158.8)	42(158.8)	42(158.8)
GREY HOLDING TANK CAP.-GAL(L)	42(158.8)	42(158.8)	42(158.8)	42(158.8)	42(158.8)	42(158.8)	39(147.4)	39(147.4)	39(147.4)	39(147.4)	39(147.4)	39(147.4)
FUEL CAP.-GAL(L)	75(284)	75(284)	80(302)	75(284)	75(284)	80(302)	75(284)	80(302)	75(284)	80(302)	75(284)	80(302)
PROPANE CAP.-GAL(L)	25.3(95.8)	25.3(95.8)	25.3(95.8)	29.2(110.4)	29.2(110.4)	29.2(110.4)	29.2(110.4)	29.2(110.4)	29.2(110.4)	29.2(110.4)	29.2(110.4)	29.2(110.4)

**Includes Water Heater

GVWR (GROSS VEHICLE WEIGHT RATING)

The maximum permissible weight of this motorhome. The GVWR is equal to or greater than the sum of the unloaded vehicle weight (UVW) plus the net carrying capacity (NCC).

UVW (UNLOADED VEHICLE WEIGHT)

The weight of the motorhome as built at the factory. The UVW does not include cargo, fresh water, LP gas, factory or dealer installed accessories.

NCC (NET CARRYING CAPACITY)

The maximum weight of personal belongings, food, fresh water, LP gas, tools, tongue weight of towed vehicle, factory and dealer installed accessories, etc., that can be carried by this motorhome. (NCC is equal to or less than GVWR minus UVW.) Please see your dealer for weights of factory installed options.

Exterior Options



Aztec

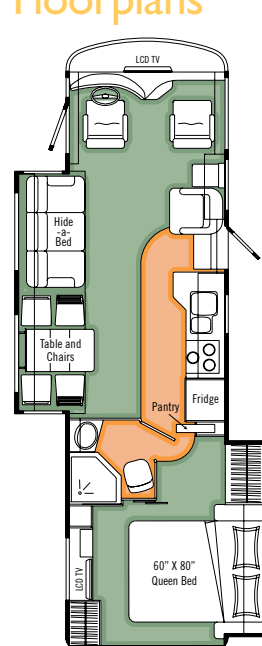


Cabernet

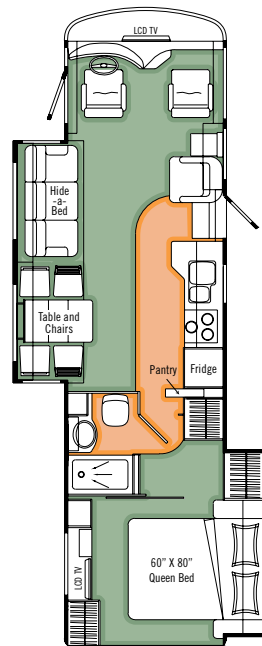


Forest Hill

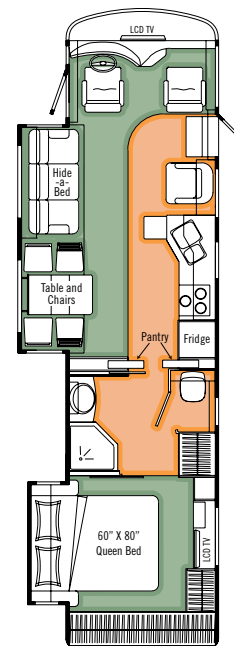
Floorplans



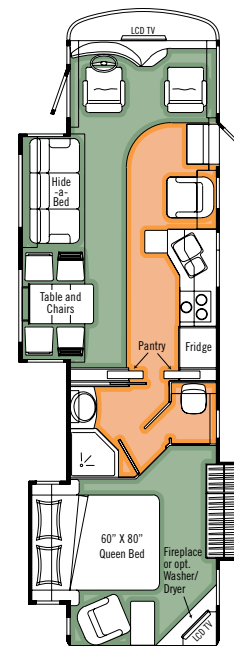
A3202FB



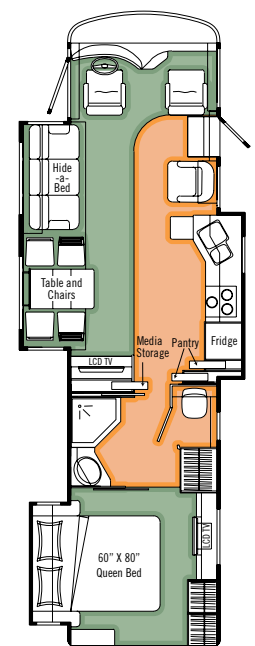
A3509FB



A3710FB



A3711FVB



A3712FGB

High Pressure Laminate

Carpet

STANDARDS AND OPTIONS

08

CHASSIS AND SUSPENSION	A3202FB	A3509FB	A3710FB	A3711FWB	A3712FGB
Airbag Assist Suspension - Rear (n/a with FRED)	S	S	S	S	S
Alternator - 130 Amp	S	S	S	S	S
Block Heater	S	S	S	S	S
Chassis – Ford 6.8 L V-10 Triton 22,000 lb. GVWR , Five Speed Torqshift Transmission	S	S			
Chassis - Workhorse W24, 24,000 lb. GVWR, 8.1 Vortec w/ 6 Speed Allison 2000 Series Transmission			S	S	S
Chassis - Workhorse W22, 22,000 lb. GVWR, 8.1 Vortec w/ 6 Speed Allison 1000 MH Series Transmission	0	0			
Chassis - Freightliner FRED Front Engine Diesel-Cummins 6.7L 340 HP ISB w/660 Ft Lb Torque and 6 spd Allison 2350 Transmission and upgrade to Onan 5.5KW Quiet Diesel Generator	0	0	0	0	0
Concealed Locking Fuel Fill Access	S	S	S	S	S
Hitch - Trailer Hitch Receiver w/ Wiring and Plug - 600/6000 lb			S	S	S
Hitch - Trailer Hitch Receiver w/ Wiring and Plug - Class III	S	S			
Wheels and Tires - Aluminium Wheels w/ 235/80R22.5 Tires (Front and Outer Duals)	S	S	S	S	S
DRIVERS AREA CONVENIENCES					
Air Conditioner - Chassis	S	S	S	S	S
Ash Tray - Inserts into Cup Holder in Center Console	0	0	0	0	0
Blinds - Drivers and Passenger Side Roller	S	S	S	S	S
Cameras - Side Turn Cameras	0	0	0	0	0
Compass/Thermometer - Dash Mounted Directional Compass with Exterior Temperature	0	0	0	0	0
Cruise Control and Tilt Steering Wheel	S	S	S	S	S
Door - Driver's c/w Power Window	S	S	S	S	S
GPS - Garmin GPS (Display on Rear View Monitor) w/ Remote	0	0	0	0	0
Mats - Driver/Passenger Floor Mats	S	S	S	S	S
Mirrors - Heated Remote Exterior Mirrors	S	S	S	S	S
Rear view Camera/Monitor – Color LCD Display Mounted in Dash	S	S	S	S	S
Seat - Ultra Leather Drivers Captain Chair w/ 3 Point Seat Belts and 6 Way Power	S	S	S	S	S
Seat - Ultra Leather Passenger Captain Chair w/ 3 Point Seat Belt	S	S	S	S	S
Switch - Battery Boost (Coach to Chassis Batteries)	S	S	S	S	S
Switch - Battery Selector Switch for Radio	S	S	S	S	S
Wipers - Wet Arm Windshield Wipers c/w Intermittent Function	S	S	S	S	S
VEHICULAR					
Bumper - Integrated Fiberglass Rear Bumper - Steel Reinforced	S	S	S	S	S
Headlights - Halogen	S	S	S	S	S
Jacks - HWH "One Touch" Automatic Hydraulic Levelling Jacks with Touch Pad Control	S	S	S	S	S
Light - High Mounted Stoplight – LED Long Life	S	S	S	S	S
Lights - Halogen Automotive Driving Lights	S	S	S	S	S
Undercoating - Automotive Type	S	S	S	S	S
CONSTRUCTION					
Baggage Doors - Aluminium Baggage Doors c/w Gas Struts and Slam Latch	S	S	S	S	S
Baggage Doors - Side Swing Baggage Doors under Galley Slide Out					S
Gel Coat Fiberglass Front & Rear Cap	S	S	S	S	S
Lined and Lit Baggage Compartments	S	S	S	S	S
Roof - Domed Kemlite FRP Flexroof	S	S	S	S	S
Steel Cab Floor, Firewall, and Dash Structure	S	S	S	S	S
Vacuum Bonded Aluminium Framed Insulated Roof Construction	S	S	S	S	S
Vacuum Bonded Aluminium Framed Insulated Sidewall Construction with Thermal Break and Gelcoat Fiberglass Sidewalls	S	S	S	S	S
Vacuum Bonded Steel Framed Insulated Floor Construction	S	S	S	S	S
Windows - Tinted Radius Corner Thermal Pane Windows	S	S	S	S	S
EXTERIOR					
Diamondshield© Paint Protection Film on Front End	0	0	0	0	0
Door - Screened Entry Door w/ Stud Shield and Deadbolt Lock	S	S	S	S	S
Exterior Assist Handle - Monogrammed	S	S	S	S	S
Handle - Entry Door Assist Handle (Interior Mounted)			S	S	S
Ladder - Exterior Ladder c/w Detachable Lower Section	S	S	S	S	S
Light - Deluxe Patio Light	S	S	S	S	S
Lights - Side Mounted Docking (1 per Side)	S	S	S	S	S

08

EXTERIOR (con't)	A3202FB	A3509FB	A3710FB	A3711FWB	A3712FGB
Paint - Full Body Exterior Paint w/ Clear Coat	S	S	S	S	S
Step - Triple Electric Retractable	S	S	S	S	S
Windshield - One Piece	S	S	S	S	S
INTERIOR					
84" Interior Ceiling Height	S	S	S	S	S
Cabinetry - Solid "Ginger Spice" Oak Cabinet Face Framing and Solid Wood Veneer Panels	S	S	S	S	S
Cabinetry - Solid Natural Cherry Face Framing and Solid Wood Veneer Panels	0	0	0	0	0
Ceiling - Flat with Padded Vinyl Headliner	S	S	S	S	S
Computer Tray - Passenger's Side	0	0	0	0	0
Covers - Insulated Vent Covers	0	0	0	0	0
Detectors - Electronic Smoke, LP and CO	S	S	S	S	S
Doors - Solid Wood Raised Panel Cabinet Doors w/ hidden European Hinges	S	S	S	S	S
Drawers - Full Extension Ball Bearing Drawer Tracks w/ Snap Latches	S	S	S	S	S
Fire Extinguisher - Dry Chemical	S	S	S	S	S
Flooring - Carpeting in Living Area and Bedroom	S	S	S	S	S
Lamps - Courtesy Floor Lamps	S	S	S	S	S
Latches - Snap Latches on all Cabinet Doors	S	S	S	S	S
Lighting - Three Way Switched Interior Lights (Door, Dash and on Light)	S	S	S	S	S
Safe - Keylock Safebox	0	0	0	0	0
Shades - Day/Night Pleated	S	S	S	S	S
Slide Out - Electric Slide Out System in Bedroom	S	S	S	S	S
Slide Out - HWH Hydraulic Galley Area Slide Out System					S
Slide Out - HWH Hydraulic Living Area Flush Floor Slide Out System	S	S	S	S	S
FURNITURE					
Booth Dinette - w/ Slide Out Drawers and Wall Mount Solid Surface Edged Laminate Table	0	0	0	0	0
Cabinet - Refreshment Center	0	0			
Chair - Ultra Leather Captain's Chair on Passenger's Side	S	S			
Chair - Ultra Leather Captain's Chair on Passenger's Side w/ Manual Foot Rest			S	S	S
Chairs - Two Extra Solid Wood Chairs for Dining Table with Second Leaf for Table	0	0	0	0	0
Flip Table Behind Passengers Seat	S	S			
Hide-A-Bed - Cloth on Driver's Side w/ Air Coil Mattress with 110V Air Pump	S	S	S	S	S
Table - Solid Wood Extendable Wall Mount Table w/ 2 Solid Wood Chairs & One Leaf w/ Two Folding Chairs in Lieu of Booth Dinette	S	S	S	S	S
GALLEY					
Cook Top - Recessed Cook Top c/w High Output Burner and Solid Surface Recessed Bi-fold Range Cover	S	S	S	S	S
Countertop - Solid Surface Counter in Galley with Stainless Steel Under Mount Sink and Solid Surface Sink Covers	S	S	S	S	S
Faucet - High Rise Oil Rubbed Bronze Galley Faucet w/ Sprayer	S	S	S	S	S
Flooring - High Pressure "Tile Look" Laminate Floor in Galley and Entrance Area	S	S	S	S	S
Micro/Convection Oven - (OTR) c/w 110v Range Hood and Light	S	S	S	S	S
Mirror - Bevelled Mirror Behind Range and on Fridge Wall	S	S	S	S	S
Oven - 21" LP Glass Door Oven	0	0	0	0	0
Pantry - Half Height Pantry above Washer and Dryer Cabinet		0			
Refrigerator - 4 Door 12 cu. Ft. c/w Ice Maker and Water in the Door - LP/Electric, Stainless Steel Finish Doors w/ Ignition Lock			0	0	0
Refrigerator - Dometic LP/Electric 9 Cu. Ft. w/ Temp Control w/ Oak or Cherry Framed Raised Panel Inserts	S	S	S	S	S
LAVATORY					
Door - Shower/Tub Door (F-Folding, S-Sliding, H - Hinged)	F	S	H	H	H
Flooring - High Pressure Laminate Floor in Lavatory	S	S	S	S	S
Shower Stall / Tub - Fiberglass Enclosed			S	S	S
Shower Stall / Tub - Color-coordinated Acrylic	S	S			
Sink - Acrylic Sink in Lavatory	S	S			
Sink - Porcelain Sink in Lavatory			S	S	S
Dual Pane Skylight - Residential in Shower		S			
Dual Pane Skylight - Residential Neo Angle in Shower	S		S	S	S

08

New for 2008

S

Standard

0

Option

STANDARDS AND OPTIONS

	A3202FB	A3509FB	A3710FB	A3711FWB	A3712FGB
LAVATORY (con't)					
Toilet - Sealand 510 - China - Foot Flush with Sprayer	S	S	S	S	S
BEDROOM					
Bedsread - Decorative Bed Spread with Throw pillows w/ Decorative Throw	S	S	S	S	S
Fireplace with Cocktail chair and Flip up Computer Table	-	-	-	S	-
Mattress - Residential Quality Queen (60" x 80")	S	S	S	S	S
Shades - Day/Night Pleated c/w Blackout	S	S	S	S	S
Stool - for Make up Table	0	0	0	-	0
Storage - Easy Under Bed Storage c/w Gas Struts	S	S	S	S	S
ENTERTAINMENT					
CD Changer - 10 Stack CD Changer	0	0	0	0	0
Satellite Dish - Explorer Dish for Starchoice - Automatic Acquisition	0	0	0	0	0
Satellite Dish - High Definition Satellite Dish (HD on Living Area TV Only) - Motosat	0	0	0	0	0
Satellite Dish - Motosat 18" Executive w/ DVB Automatic Acquisition and Identification	0	0	0	0	0
Satellite Dish - Winegard with Electronic Elevation Sensor	0	0	0	0	0
Satellite Radio Prewire - including Satellite Antenna (Subscription not Included)	0	0	0	0	0
Stereo - AM/FM CD and DVD Stereo in Bedroom with Alarm Clock	S	S	S	S	S
Stereo - AM/FM/CD/MP3 Sirius Ready Player in Dash w/ Wireless Remote and Auxiliary Input	S	S	S	S	S
Stereo - Exterior AM/FM - CD Stereo with Shielded Speakers	0	0	0	0	0
Stereo - Home Theatre System - 5 Channel Stereo with Subwoofer	S	S	S	S	S
TV - AC 20" LCD Flat Screen Color Stereo c/w Remote in Bedroom	S	S	S	S	S
TV - AC 26" LCD in Hutch Behind Main Slide Out					S
TV - AC 26" LCD Flat Screen Color Stereo c/w Remote in Front Overhead Cabinet	S	S	S	S	
TV Antenna - Roof Top Retractable Antenna c/w Booster	S	S	S	S	S
HEATING VENTILATING AND AIR CONDITIONING					
Air Conditioner - Centrally Ducted 13,500 BTU w Heat Strip and Remote Return Air	S	S			
Air Conditioner - Dual Ducted (2) 13,500 BTU with Heat Strip and Remote Return Air	0	0	S	S	S
Air Conditioner - Ducted Roof 15,000 BTU with Heat Strip and Remote Return Air	0	0			
Fan - Fantastic Non Reversible In Lavatory w/ Wall Switch	S	S	S	S	S
Fan - Fantastic Non Reversible In Toilet Room w/ Wall Switch			S	S	S
Fan - Reversible Thermostatically Controlled Fantastic Fan in Bedroom w/ Wall Switch	S	S	S	S	S
Furnace - 2 x 25,000 BTU Furnace c/w Electronic Ignition	S	S	S	S	S
Heater - Rear Auxiliary Automotive with Electric Control Valve	S	S	S	S	S
ELECTRICAL					
2000 Watt Inverter W/ 100 Amp Battery Charger ILO Converter and 600 W Inverter	0	0	0	0	0
30 Amp Electrical Service with EMS	S	S			
50 Amp Electrical Service with EMS			S	S	S
Batteries - Dual 6 Volt Deep Cycle Auxiliary on Slide Out Tray	S	S	S	S	S
Bi-Directional Isolator Relay Delay (BIRD) Battery Charging	S	S	S	S	S
Converter - 55 Amp - 120/12 Volt c/w Charger	S	S	S	S	S
Generator - 5.5 KW Onan Marquis Gold w/ Hour Meter Mounted in Convenience Center w/ Auto Changeover Switch	S	S	S	S	S
Inverter - 600 Watt (For Front TV, Bedroom TV, Home Theatre, Sat Receiver)	S	S	S	S	S
Pre-wire - Power Awning	S	S	S	S	S
Prewire - Satellite Dish (with 12V Power, Ground, RG-6 Coax and Fish Wire)	S	S	S	S	S

ELECTRICAL (con't)					
Pre-wire - Solar Panel	S	S	S	S	S
Receptacle - Patio GFI Receptacle	S	S	S	S	S
Switch - Electronic Battery Disconnect (Coach Batteries)	S	S	S	S	S
Telephone & Cable TV Hookup - Exterior	S	S	S	S	S
PLUMBING AND LP SYSTEMS					
Black Tank Flush System	S	S	S	S	S
Exterior Shower	S	S	S	S	S
Holding Tanks - Enclosed, Insulated and Dual Heated Waste Tanks	S	S	S	S	S
LP Tank - Easy Access Propane Tank	S	S	S	S	S
Roughed in Plumbing for Washer Dryer		S	S	S	S
Switch - 3 Way Water Pump Switch	S	S	S	S	S
Systems Monitor located in Convenience Center	S	S	S	S	S
Valve - Water Heater By-Pass	S	S	S	S	S
Water Filter - Whole House Water Filter in Utility Module	S	S	S	S	S
Water Heater - Electronic Ignition LP Gas/Electric/Motoraid 10 Gallon			S	S	S
Water Heater - Electronic Ignition LP Gas/Electric/Motoraid 9 Gallon Equivalent	S	S			
Water Tank - Enclosed, Insulated and Dual Heated	S	S	S	S	S
Water Tank Fill and Bleach Port	S	S	S	S	S
Winterization System c/w Antifreeze Pickup	S	S	S	S	S
SYSTEMS					
Central Vacuum with Outlet in Baggage Compartment	S	S	S	S	S
Washer/Dryer (vented)		0	0		0
Washer/Dryer (vented) - in Lieu of Fireplace in Bedroom				0	
AWNING PACKAGES					
Manual Awning Package Includes	S	S	S	S	S
08 Weathershield Equipped A&E 2 Step Patio Awning -Acrylic w/ Black Hardware (Length Shown)	14	15	19	19	19
Weathershield Equipped A&E Elite Slide Topper (Number of Awnings Shown)	2	2	2	3	2
Power Awning Package Includes	0	0	0	0	0
Weathershield Equipped A&E Weatherpro - Acrylic w/ Black Hardware (Length Shown)	14	15	19	19	19
Weathershield Equipped A&E Elite Slide Topper w/ Black Hardware (Number of Awnings Shown)	2	2	2	3	2
Awning - Weathershield Equipped A&E Elite Window Awnings - Black	3	3	2	1	2
CERTIFICATION					
Factory P.D.I.	0	0	0	0	0
CUSTOMER VALUE PACKAGE (Mandatory Option)					
Airbag Assist Suspension - Front (n/a with FRED)	0	0	0	0	0
CB Antenna - Includes Coax Lead in under Dash	0	0	0	0	0
Fan - Thermostatically Controlled Fantastic Fan in Living Area w/ Wall Switch	0	0	0	0	0
Fans - Chrome Cockpit Ventilating with Dash Switch	0	0	0	0	0
Lighting - Fluorescent Lighting Upgrade in Aisle and Halogen Upgrade Under Cabinets over Couch and Bed	0	0	0	0	0
Mattress - Upgrade	0	0	0	0	0
Pillows - Coordinated Pillows For Living Area	0	0	0	0	0
Rust Protection	0	0	0	0	0
Sun Visor - Power Driver and Passenger Sun Visor w/ Switch on Dash	0	0	0	0	0



Triple E Recreational Vehicles P.O. Box 1230, Winkler, Manitoba, Canada R6W 4C4 Telephone: (204) 325-4361 Fax: (204) 325-5241

Triple E Recreational Vehicles are designed and built to meet or surpass CSA-RVIA standards covering electrical services, gas services, plumbing services and vehicular safety. Commander Motorhomes exceed 96" in width. In some states, 96" is the maximum width of vehicles travelling some or all state roads. It is the responsibility of the owner to be familiar with the road usage laws of the states in which you travel. Product improvement is a continuing process at Triple E Recreational Vehicles. We reserve the right to change specifications on any or all products without prior notice; errors and omissions excepted. Triple E Recreational Vehicles is under no obligation to undertake modification to units manufactured prior to changes on specifications. Brochure pictures may be shown with optional equipment. Colours may not be exactly as shown due to the printing process. Please see your dealer for specific colours.

