


# Embassy 2008

Follow your dream

EMBASSY 2008







Truly a home away from home. Choose from four beautiful interior décor options, all of which boast solid wood cabinetry. Shown is Floorplan A35FB with Interior Glamour Package, including solid surface countertops and high pressure laminate floors.

# Travel in High Style

Journey in the lap of luxury to undiscovered country in the tastefully-appointed Embassy, which features even more creature comforts and more amenities for 2008. From the reclining seats to the wood-framed refreshment centre to the home stereo and DVD player, no detail has been overlooked. The Embassy makes the trip as exciting as the destination.



Everything the travelling gourmet needs. Embassy's fully-equipped galley comes complete with a convenient pull-out pantry, an all-new Dometic 9 cu. ft. gas/electric refrigerator and heavy duty full-extension drawer glides.



The decorative bedspread and matching throw pillows perfectly complement the bedroom's large wardrobe and make-up table, constructed in warm ginger spice oak. (Floorplan A36FB shown)

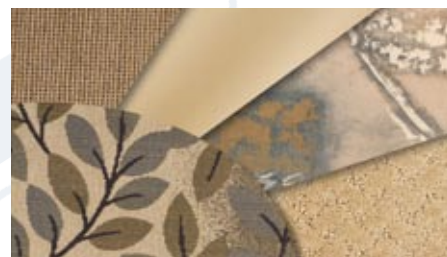


## Make It Yours

The spacious bedroom affords maximum comfort and unabashed elegance. Floorplan A35FB (shown) features a full residential queen size bed and adjacent bunk beds with ample underbed storage.



Tuscan Sun



River Reflection



Ginger Spice Oak



Northern Grassland



Merlot





# Specifications

Embassy 2008	A30G	A34F	A35FB	A35FW	A36FB
GVWR-LBS(KG)	18000(8164)	20700(9392)	20700(9392)	20700(9392)	20700(9392)
UVW-LBS(KG)	15211(6902)	16395(7439)	17191(7800)	17191(7800)	17228(7817)
NCC-LBS(KG)	2789(1262)	4305(1953)	3509(1592)	3509(1592)	3472(1575)
WHEELBASE-IN(mm)	190(4826)	228(5791)	228(5791)	228(5791)	228(5791)
LENGTH Not incl. ladder-FT(mm)	31'1"(9476)	34'7"(10541)	35'11"(10947)	35'11"(10947)	36'2"(11022)
WIDTH-FT(mm)	8'4"(2534)	8'4"(2534)	8'4"(2534)	8'4"(2534)	8'4"(2534)
HEIGHT Ind.A/C-FT(mm)	11'9"(3581)	11'9"(3581)	11'9"(3581)	11'9"(3581)	11'9"(3581)
WATER TANK CAP.**-GAL(L)	49(186)	76(285)	76(285)	76(285)	76(285)
HOLDING TANK CAP.-GAL(L)	78(295)	78(295)	78(295)	78(295)	78(295)
FUEL CAP.-GAL(L)	75(284)	75(284)	75(284)	75(284)	75(284)
PROPANE CAP.-GAL(L)	25.3(95.8)	25.3(95.8)	25.3(95.8)	25.3(95.8)	25.3(95.8)

\*\*Includes Water Heater

## GVWR (GROSS VEHICLE WEIGHT RATING)

The maximum permissible weight of this motorhome. The GVWR is equal to or greater than the sum of the unloaded vehicle weight (UVW) plus the net carrying capacity (NCC).

## UVW (UNLOADED VEHICLE WEIGHT)

The weight of the motorhome as built at the factory. The UVW does not include cargo, fresh water, LP gas, factory or dealer installed accessories.

## NCC (NET CARRYING CAPACITY)

The maximum weight of personal belongings, food, fresh water, LP gas, tools, tongue weight of towed vehicle, factory and dealer installed accessories, etc., that can be carried by this motorhome. (NCC is equal to or less than GVWR minus UVW.) Please see your dealer for weights of factory installed options.

## Exterior Options



Standard Decal Packaging

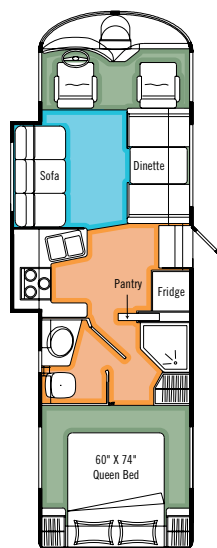


Optional Coral Sand

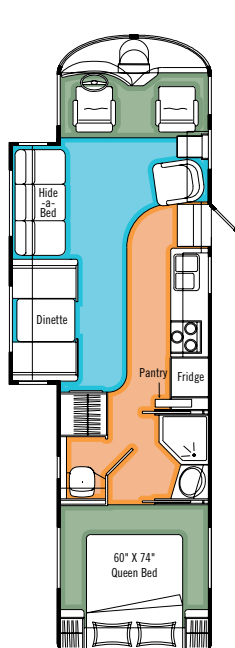


Optional Granite Ridge

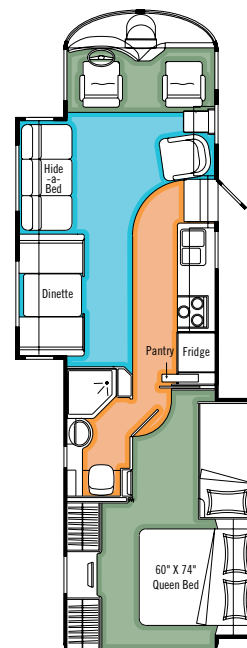
## Floorplans



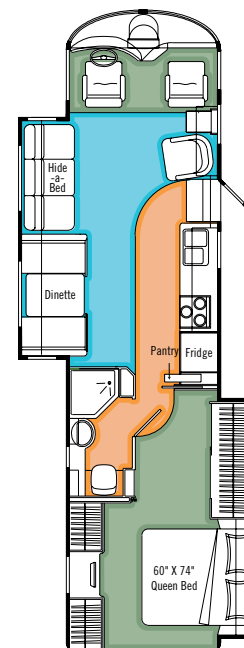
A30G



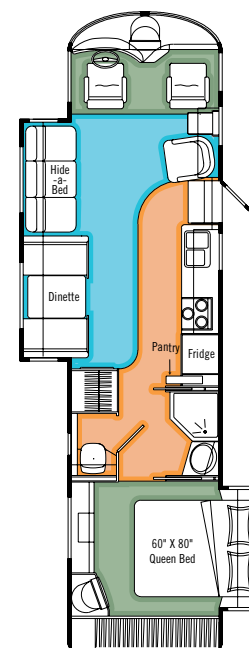
A34F



A35FB



A35FW



A36FB

Vinyl

Carpet

Optional Carpet

Note: Glamour package will receive laminate flooring in living, galley, and lavatory areas.

## STANDARDS AND OPTIONS

### CHASSIS AND SUSPENSION

	A30G	A34F	A35FB	A35FW	A36FB
Airbag Assist Rear Suspension	S	S	S	S	S
Block Heater	S	S	S	S	S
Chassis - Ford V-10, 6.8L V10 Triton - 18,000 lb. GVW - 190" Wheelbase	S				
Chassis - Ford V-10, 6.8L V10 Triton - 20,500 lb. GVW - 228" Wheelbase		S	S	S	S
Concealed Locking Fuel Filler	S	S	S	S	S
Hitch - Trailer Hitch Receiver w/ wiring and plug - Class III 500/5000 lb	S	S	S	S	S
Transmission - Five Speed Automatic c/w Overdrive w/ Transmission Cooler	S	S	S	S	S
Wheel Simulators	S	S	S	S	S

### DRIVERS AREA CONVENIENCES

Air Conditioner - Chassis	S	S	S	S	S
Ash Tray - Inserts into Cup Holder in Center Console	0	0	0	0	0
Cameras - Side Turn Cameras	0	0	0	0	0
Cruise Control and Tilt Steering Wheel	S	S	S	S	S
Mirrors - Heated Remote Mirrors	S	S	S	S	S
Power Seat - Six Way Power Drivers Seat	0	0	0	0	0
Rear View Camera/Monitor - B&W	S	S	S	S	S
Seats - Optima Leather Reclining Driver's and Passenger's Swivel Bucket Seats	S	S	S	S	S
Switch - Battery Boost Switch	S	S	S	S	S
Switch - Battery Selector Switch for Radio	S	S	S	S	S
Wipers - Wet Arm Windshield Wipers c/w Intermittent	S	S	S	S	S

### VEHICULAR

Alternator - 130 Amp					
Jacks - HWH Hydraulic Leveling Jacks with Joystick Control	S	S	S	S	S
Light - High Mounted Stoplight - LED Long Life	S	S	S	S	S
Lights - Halogen Automotive Driving Lights	S	S	S	S	S
Undercoating - Automotive Type	S	S	S	S	S

### CONSTRUCTION

Baggage Doors - Aluminum Baggage Doors with Gas Struts and Slam Latch	S	S	S	S	S
Floor - Vacuum Bonded Insulated Steel Framed Floor Construction	S	S	S	S	S
Galvanized Luggage Compartments with Cargo Lining	S	S	S	S	S
Gelcoat Fiberglass Front & Rear Masks	S	S	S	S	S
Gelcoat Vetrolite Fiberglass Sidewalls	S	S	S	S	S
08 Roof - Domed Kemlite FRP Flexroof	S	S	S	S	S
Steel Cab Floor, Firewall and Dash Structure	S	S	S	S	S
Vacuum Bonded Aluminum Framed Insulated Sidewall with Thermal Break	S	S	S	S	S
Vacuum Bonded Aluminum Framed Insulated Roof Construction	S	S	S	S	S
Windows - Tinted Radius Corner Thermal Pane Windows	S	S	S	S	S

### EXTERIOR

08 Diamondshield® Paint Protection Film on Front End	0	0	0	0	0
Door - Screened Entry Door c/w Integral Deadbolt Lock	S	S	S	S	S
Exterior Assist Handle - Monogrammed	S	S	S	S	S
08 Full Paint Exterior (also upgrades Patio Awning to A&E Two Step with Black Hardware and upgrades Slide Toppers to Elite with Metal Weathershield)	0	0	0	0	0
Ladder - Exterior Ladder	S	S	S	S	S
Light - Porch Light with Yellow Lens	S	S	S	S	S
Paint Around Front Cockpit Area	0	0	0	0	0
Painted Skirts	S	S	S	S	S
Step - Electric Entry Step	S	S	S	S	S

### INTERIOR

Blind - Venetian Blind in Galley	S	S	S	S	S
Borders - Wall Borders in Galley and Bedroom Areas	S	S	S	S	S
Ceiling - Flat with Padded Vinyl Headliner	S	S	S	S	S
Detectors - Electronic Smoke, LP and CO Detectors	S	S	S	S	S
Doors - Raised Solid Oak Cabinet Doors	S	S	S	S	S
Drawers - Full Extension Ball Bearing Drawer Tracks	S	S	S	S	S
Fire Extinguisher - Dry Chemical	S	S	S	S	S
Flooring - Carpet in Living Area as per Floor plan w/Std. Vinyl Floor Only	0	0	0	0	0
Flooring - Vinyl in Living Area, Galley and Lavatory and Carpet in Bedroom Areas	S	S	S	S	S
Shades - Day/Night Pleated Shades	S	S	S	S	S
Slide Out - Electric Slide Out System in Bedroom			S	S	S
Slide Out - HWH Hydraulic Slide Out System in Living Area	S	S	S	S	S

### FURNITURE

Booth Dinette - Steel Framing for Seat Belts	S		S	S	
Booth Dinette - w/ Underseat Storage - Laminate w/ Solid Oak Edge and Roll Out Underseat Storage		S			S
Cabinet - Refreshment Center		0	0	0	0
Chair - Optima Leather Captains Chair on Passenger Side		S	S	S	S
Flip Table - Oak		S	S	S	S
Hide-A-Bed - Cloth		S	S	S	S
Mattress - Air Coil Mattress Upgrade on Hide a Bed (c/w 110V Air Pump)		0	0	0	0
Sofa - Cloth Jackknife Sofa w/Bayonet Arms	S				

### GALLEY

Bi-fold Range Cover	S	S	S	S	S
Convection Microwave - OTR c/w Light and 110V Vent Fan w/ Cooktop and Drawers ILO Oven	0				
Cutting Board / Sink Cover	S	S	S	S	S
Countertop - Laminate Counter with Solid Oak Edge w/ Acrylic Sink and Matching Backsplash	S	S	S	S	S
Faucet - Brushed Nickel Galley Faucet with Pull out Sprayer	S	S	S	S	S
Microwave - OTR c/w Light and Vent Fan	S				
Microwave Oven		S	S	S	S
Pantry - Pull Out Pantry	S	S	S	S	S
Range - Three (3) Burner Cook Top w/ High Output Burner & 22" Oven	S	S	S	S	S
Range Hood - w/ light		S	S	S	S
Refrigerator - Dometic LP/Electric 9 Cu. Ft. w/ Temp Control	S	S	S	S	S

### LAVATORY

Shower - Neo Angle Shower with Glass Doors	S	S	S	S	S
Sink - Acrylic Sink in Laminate Counter with Laminate Edge	S	S	S	S	S
Skylight - Residential Dual Pane Neo Angle in Shower	S	S	S	S	S
Toilet - Sealand Traveller Lite w/ Sprayer - China - Foot Flush	S	S	S	S	S
Window - in Toilet Room	S	S	S	S	S

### BEDROOM

Bedspread - Decorative Bed Spread and Throw Pillows	S	S	S	S	S
Headboard - Fabric Wrapped Deluxe Headboard	S	S			S
Make Up Table in Bedroom					S
Mattress - Innerspring 60" X 74"	S	S	S	S	
Mattress - Innerspring 60" X 80"					S
Pillows - 2 In Bedroom	S	S	S	S	S

08 New for 2008 S Standard 0 Option M Mandatory

## STANDARDS AND OPTIONS

	A30G	A34F	A35FB	A35FW	A36FB
<b>BEDROOM (con't)</b>					
Shades - Day/Night Pleated c/w Blackout	S	S	S	S	S
Sliding Bed with Bunks (bunks are 28"x74")			S		
<b>08</b> Stool - for Make up Table			0	0	0
Wardrobe and Two Drawers In Bedroom Slide				S	
<b>ENTERTAINMENT</b>					
CD Changer - 10 Stack CD Changer	0	0	0	0	0
Radio Monoplex System - Switching for Rear Bedroom Speakers	S	S	S	S	S
Satellite Dish - Winegard with Electronic Elevation Sensor	0	0	0	0	0
Satellite Radio Prewire - including Satellite Antenna (Subscription not Included)	0	0	0	0	0
Stereo - AM/FM/DVD/CD/Sirius Ready Player in Dash w/ Wireless Remote and Auxiliary Input (Mid Model Year)	S	S	S	S	S
<b>08</b> Stereo - AM/FM/DVD/CD/Tuner Home Theater with Roof Mounted Speakers	S	S	S	S	S
Telephone and Cable TV Hook Up - Exterior	S	S	S	S	S
TV - AC 20" Flat Screen Color Stereo c/w Remote in Bedroom					S
TV - AC 20" Flat Screen Color Stereo c/w Remote in Front Overhead Cabinet	S	S	S	S	S
TV - DC 13" Color c/w Remote in Cabinet in Bedroom	0	0			
TV - Flip down 15" LCD TV incl Bracket in Bedroom			0	0	
TV Antenna - Roof Top Retractable c/w Booster	S	S	S	S	S
<b>08</b> TV - 15" LCD in Bunk Area w/ Prewire for Gaming (See Floorplan for Location)			0		
<b>HEATING, VENTILATING AND AIR CONDITIONING</b>					
Air Conditioner - Centrally Ducted 13,500 BTU w/ Heat Strip and Remote Ducted Return Air	S	S	S	S	S
Air Conditioning - Dual Ducted 2 x 13,500 Roof Air w/ Selector Switch w/ Remote Return Air (note: Front AC Upgraded to 15,000 BTU in CVP)		0	0	0	0
<b>08</b> Fan - Reversible Fantastic Thermostatically Controlled Ceiling Fan (Bedroom)	0	0	0	0	0
Furnace - Forced Air Furnace - 35,000 BTU	S	S	S	S	S
Vent - 12 Volt Power Roof Exhaust in Lavatory	S	S	S	S	S
<b>08</b> Vent - Manual Screened Roof Vent in Bedroom	S	S	S	S	S
<b>ELECTRICAL</b>					
30 Amp Electrical Service	S	S	S	S	S
Batteries - Two - 6 Volt Deep Cycle Auxiliary	S	S	S	S	S
Battery Tray - Coach Batteries on Slide Out Tray	S	S	S	S	S
BIRD - Bi Directional Isolator Relay Delay Battery Charging	S	S	S	S	S
Converter - 120 Volt/12 Volt/55 Amp c/w Charger and Auto Changeover Switch	S	S	S	S	S
Generator - 4.0 KW Onan MicroQuiet	S	S	S	S	S
Plug - 12V Power Plug in Dash	S	S	S	S	S
Receptacle - Patio GFI Receptacle	S	S	S	S	S
Switch - Coach Battery Disconnect	S	S	S	S	S

	A30G	A34F	A35FB	A35FW	A36FB
<b>PLUMBING AND LP SYSTEMS</b>					
Exterior Shower with Shut off Valves for Winterizing	S	S	S	S	S
LP Tank - Under Floor Mounted	S	S	S	S	S
Roughed in Plumbing for Washer Dryer		S			S
Water Filter - Faucet in Galley	S	S	S	S	S
Water Heater - 6 USG Electronic Ignition LP /Electric/Motoraid	S	S	S	S	S
Water Heater By-Pass Valve	S	S	S	S	S
<b>SYSTEMS</b>					
Washer/Dryer (vented)		0			0
<b>AWNINGS</b>					
<b>08</b> Awning Package includes:	S	S	S	S	S
A&E 9000 Acrylic Patio Awning w/ Aluminum Weather Shield (Length Shown)	16	19	14	14	19
Weathershield Equipped A&E Elite Slide Topper (Number of Awnings Shown)	1	1	2	2	2
<b>CERTIFICATION</b>					
Factory PDI	0	0	0	0	0
<b>SPECIAL OPTION PACKAGE(S)</b>					
CUSTOMER VALUE PACKAGE (Mandatory Option)	M	M	M	M	M
Airbag Assist Suspension - Front	0	0	0	0	0
Air Conditioner - 15,000 BTU with Heat Strip (Dual Roof Air Option will be 1 x 15,000 and 1 x 13500 BTU AC's)	0	0	0	0	0
CB Antenna - includes Coax Lead in under Dash	0	0	0	0	0
<b>08</b> Fan - Reversible Thermostatically Controlled Fantastic Fan in Galley or Living Area ILO Manual Vent	0	0	0	0	0
Fans - Chrome Cockpit Ventilating with Dash Switch	0	0	0	0	0
Pillows - Coordinated Pillows For Living Area	0	0	0	0	0
Prewire - Satellite Dish (with 12V Power, Ground, RG-6 Coax and Fish Wire) and Switch Box	0	0	0	0	0
Refrigerator Inserts - Oak Framed Raised Panel Fridge Inserts	0	0	0	0	0
Rust Protection	0	0	0	0	0
INTERIOR GLAMOUR PACKAGE		0	0	0	0
Countertop - Solid Surface Counter in Galley with Stainless Steel Undermount Sink and Solid Surface Bi Fold Range Cover					
Flouresant Lighting in Aisle in Living Area					
Solid Surface Dining Table and Vanity Edging ILO Solid Oak					
Tile Look Laminate Floor Upgrade ILO Vinyl					
XL PACKAGE INCLUDES:	S	S	S	S	S
Holding Tanks - Enclosed, Insulated and Heated					
Light Package in Baggage Compartment					
Rear Auxiliary Automotive Heater					
Tinted Thermal Pane Windows					



**Triple E Recreational Vehicles** P.O. Box 1230, Winkler, Manitoba, Canada R6W 4C4 Telephone: (204) 325-4361 Fax: (204) 325-5241

Triple E Recreational Vehicles are designed and built to meet or surpass CSA-RVIA standards covering electrical services, gas services, plumbing services and vehicular safety. Embassy Motorhomes exceed 96" in width. In some states, 96" is the maximum width of vehicles travelling some or all state roads. It is the responsibility of the owner to be familiar with the road usage laws of the states in which you travel. Product improvement is a continuing process at Triple E Recreational Vehicles. We reserve the right to change specifications on any or all products without prior notice; errors and omissions excepted. Triple E Recreational Vehicles is under no obligation to undertake modification to units manufactured prior to changes on specifications. Brochure pictures may be shown with optional equipment. Colours may not be exactly as shown due to the printing process. Please see your dealer for specific colours.

