

# Empress 2008

Follow your dream

EMPRESS 2008







# Heavenly Pursuits

If life is about the journey and not the destination, then Empress Elite voyagers have already arrived! The Empress is our flagship, giving you unrepentant luxury, unparalleled design quality and unsurpassed drivability. Powered by a Cummins ISL 425 diesel engine on a full air ride Freightliner chassis with independent front suspension, the Empress eats up the miles while passengers enjoy its abundant amenities, spacious interior and distinctive furnishings. Follow your dream in the Empress Elite. You'll be transported.





Drift off to dreamland in a residential style queen size bed, complete with wood-framed, upholstered headboard. The decorative bedspread and matching throw pillow come in four distinctive decors and the solid wood bedroom door ensures no one disturbs your slumber.



The gorgeous galley has all the ingredients for great cooking, including a solid surface countertop, slide-out counter extension, heated flooring and a 12 cubic-foot stainless steel fridge with ice maker, and water dispenser on the door.



Vacationing gourmets don't want to spend all their time cleaning up, so the Empress Elite pampers them with an optional built-in dishwasher.

The optional Danish Walnut cabinetry gives a rich, warm texture to the entire interior. Cabinets feature solid walnut face frames and paneling and mitered doors with rope inlay and European hidden hinges.







Solid wood cabinetry gives the lavatory a touch of class and is complemented by a solid surface vanity top with undermounted sink, deluxe faucets and ceramic backsplash.



Exquisite Danish Walnut lends its warmth to the spacious master bedroom, which features a large cedar-lined wardrobe, a residential style dresser, lots of storage space and a 20" LCD TV.



The laundromat is no place to spend holiday time. The master bedroom has an optional space-saving washer dryer combo.

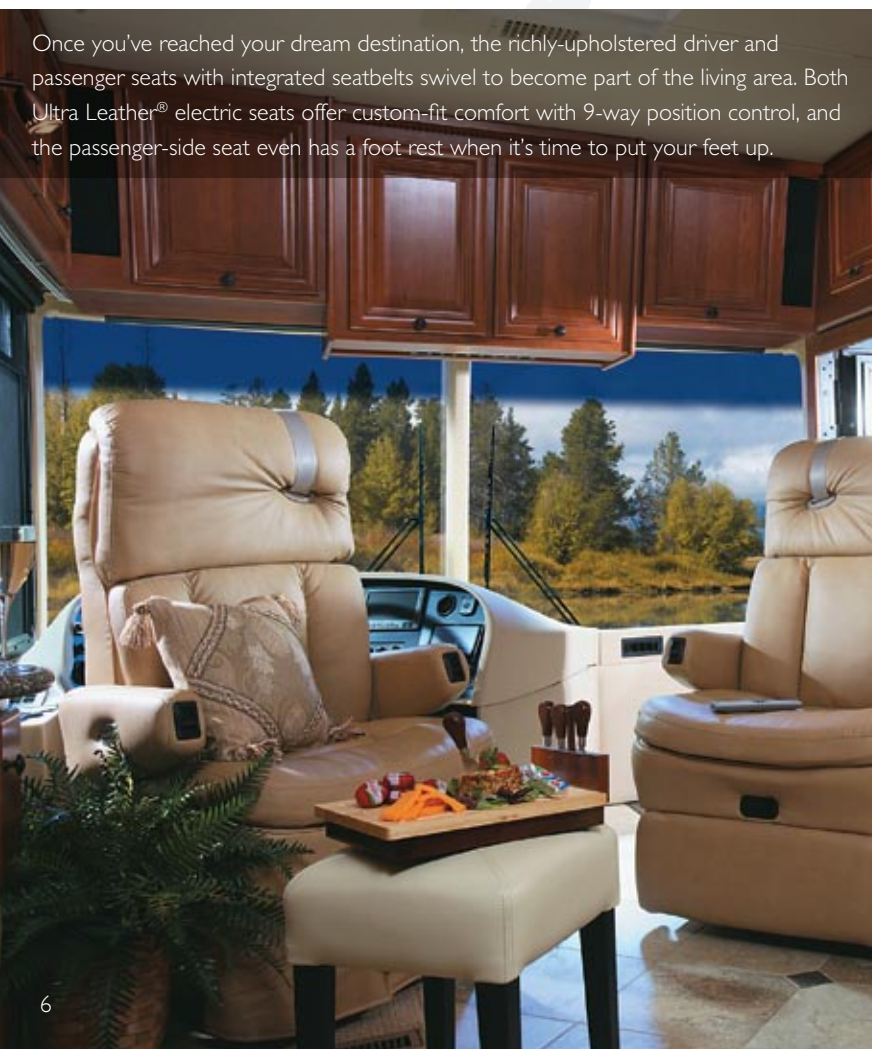




The convenient service module for the Empress Elite brings many outstanding features together in one place for ease of access and operation. The module features a full house water filtration system, easily operated plumbing selector valves and exterior shower, all in a totally insulated and heated environment.



Seated in the ergonomically-designed cockpit, the driver is in total control at all times, with ready access to intelligent instrumentation, including GPS navigation system and rear and side camera monitors. Features such as the telescopic tilt wheel and adjustable pedals ensure every pilot's comfort.



Once you've reached your dream destination, the richly-upholstered driver and passenger seats with integrated seatbelts swivel to become part of the living area. Both Ultra Leather® electric seats offer custom-fit comfort with 9-way position control, and the passenger-side seat even has a foot rest when it's time to put your feet up.

# Comfort and Protection

Born of our northern heritage, Triple E's exclusive Climate Guard® system is quite simply the best interior comfort and exterior protection package available in the recreational vehicle industry today. The Climate Guard® system has been developed with today's motorhome enthusiast in mind. It provides year round climate controlled comfort for passengers as well as built in protection for the motorhome itself, ensuring years of trouble free operation and enjoyment.

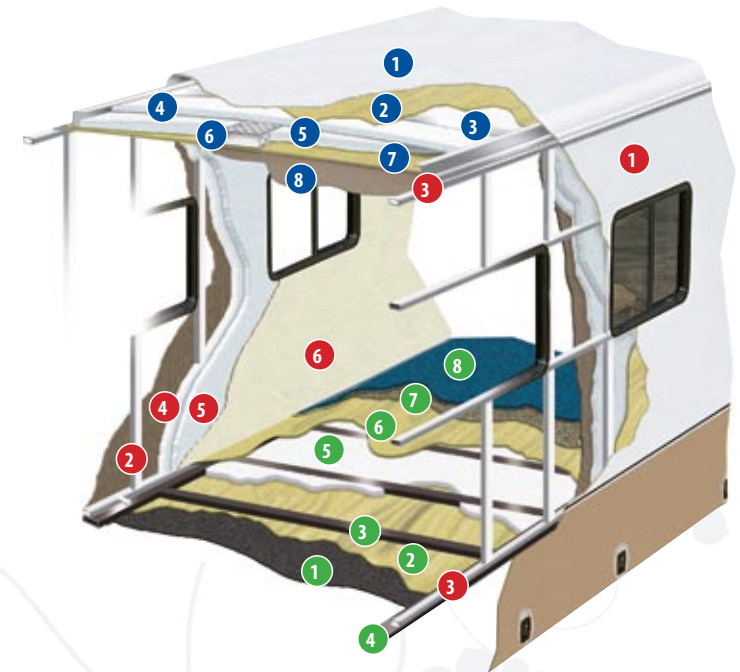
The major considerations in building a top quality motorhome are long lasting beauty coupled with the ability to stand up to all weather conditions. The coach is an aluminium and steel framed structure with vacuum bonded gel coat fibreglass sidewalls and a domed roof finished with a seamless FRP Flexroof.

## INTERIOR

- Dometic® roof air conditioners, ducted front to rear, control the temperature throughout the coach.
- High output chassis air conditioner provides travelling comfort.
- Electronic ignition furnaces designed to maintain requested interior temperatures through extreme exterior temperatures.
- High output chassis heater for quick windshield defrost.
- A rear auxiliary automotive heater – dashboard control switch – makes travel comfortable while heating the fresh water and holding tank compartments.
- Vacuum bonded, aluminium framed, insulated sidewall and roof construction provides structural strength and maintains warmth throughout the coach.
- Coach windows are designed with a dual pane construction – impeding the transfer of cold to make the interior of the window warmer and less subject to condensation.
- Optional insulated vent covers provide superior insulation for the fantasticfans and roof vents.

## EXTERIOR

- Scratch and hail resistant gel coat fibreglass sidewalls with all weather exterior finish are easy to maintain and will not rust, pit, or fade.
- A domed, seamless, insulated, one piece FRP Flexroof promotes quick water run off and minimizes exterior maintenance.
- Durable undercoating protects against dust and moisture and reduces stone and road noise.
- Steel enclosed, fibreglass insulated and heated fresh water and holding tanks assure extreme cold climate performance for your plumbing system. Tanks are heated from two different sources – the motorhome's ducted furnace while parked and the rear auxiliary automotive heater when travelling.
- Winterization system complete with potable antifreeze tank allows you to easily drain tanks and fill water lines with potable antifreeze.
- Steel, insulated, and sealed firewall protects the driver and passengers from the outside elements.
- Additional 12" thermal break insulation in the wall beyond the standard 1" Styrofoam block insulation separates the climate controlled interior from the outside elements.



### FLOOR

- 1 One Piece Woven Poly-Propylene Underbelly
- 2 Plywood (3/8")
- 3 Tubular Steel Framing (Welded)
- 4 Styrofoam Filled Wall Support Plates
- 5 Block Styrofoam Insulation (1")
- 6 Plywood (1/2")
- 7 Carpet Underlay
- 8 Carpeting (Floor covering)

### SIDEWALLS

- 1 Seamless Gelcoat Fibreglass Exterior
- 2 Aluminium Framing (Welded)
- 3 Styrofoam Filled Floor and Roof Plate
- 4 Block Styrofoam Insulation (1")
- 5 Styrofoam Thermal Break Insulation (1/2")
- 6 Interior Decorative Luan Wall Panels

### ROOF

- 1 One Piece FRP Flexroof
- 2 Luan Backer
- 3 Aluminium Roof Truss
- 4 Block Styrofoam Insulation (1 1/2")
- 5 Enclosed/Insulated Climate Control Ducting
- 6 Block Styrofoam Thermal Break Insulation (2")
- 7 Plywood (3/8")
- 8 Padded Vinyl Headliner





# Beautiful Options



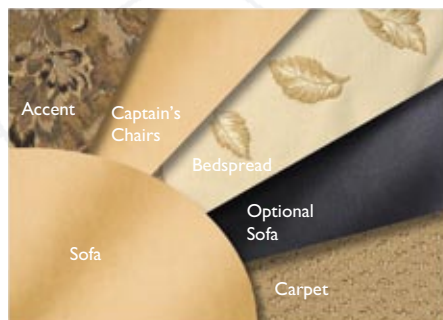
Harvest Cherry



Natural Cherry



Danish Walnut



Whistler Lodge



Sundance



Masterpiece



Egyptian Sand



Cabernet



Driftwood



Moon Mist

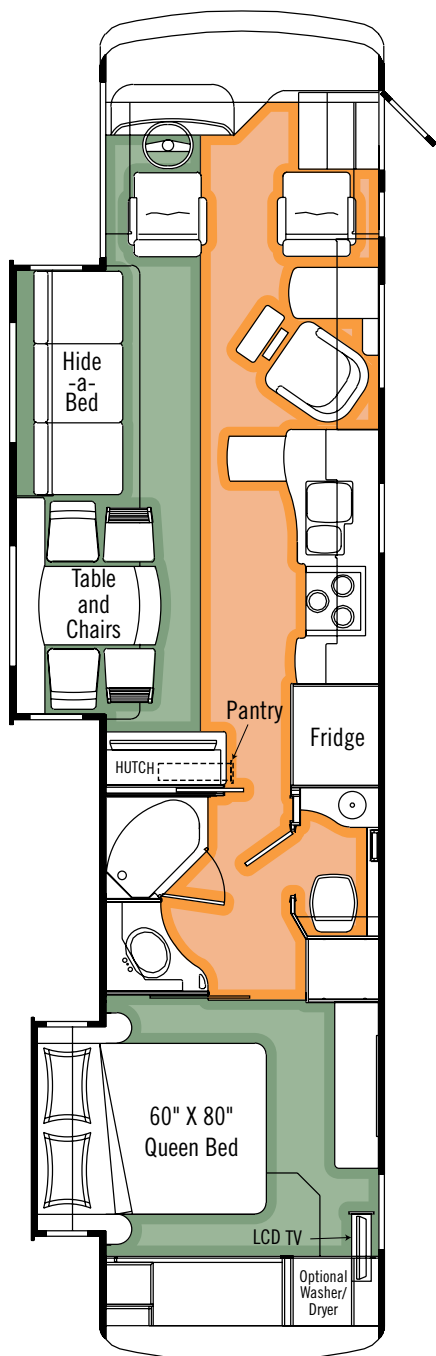


Russet

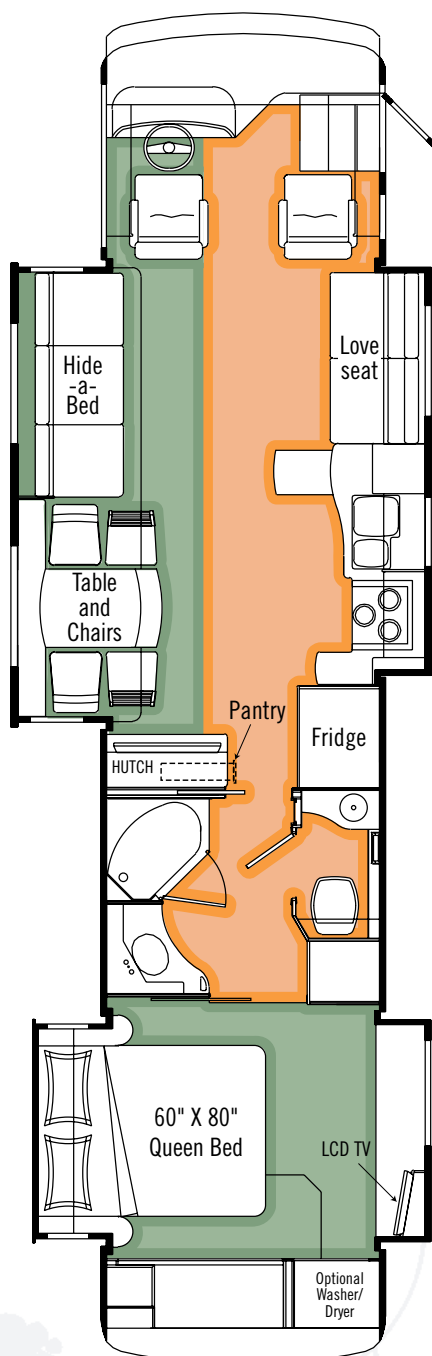
Colours may not be exactly as shown due to the printing process. Please see your dealer for specific colours.



## Floorplans



A4002FB



A4004FGBW

## Specifications

<i>Empress 2008</i>	<i>A4002FB</i>	<i>A4004FGBW</i>
GVWR-LBS(KG)	34320(15567)	34320(15567)
UVW-LBS(KG)	27311(12388)	28133(12761)
NCC-LBS(KG)	7009(3179)	6187(2806)
WHEELBASE-IN(mm)	266"(6756)	266"(6756)
LENGTH-FT(mm)	40'2"(12243)	40'2"(12243)
WIDTH-FT(mm)	8'4"(2534)	8'4"(2534)
HEIGHT Incl.A/C-FT(mm)	12'7"(3835)	12'7"(3835)
WATER TANK CAP.**-GAL(L)	102(386)	102(386)
HOLDING TANK CAP GREY.-GAL(L)	57(216)	57(216)
HOLDING TANK CAP. BLACK-GAL(L)	57(216)	57(216)
FUEL CAP.-GAL(L)	100(379)	100(379)
PROPANE CAP.-GAL(L)	32(121)	32(121)

\*\*-Includes 10 gal (16 equiv) Water Heater

### GVWR (GROSS VEHICLE WEIGHT RATING)

The maximum permissible weight of this trailer. The GVWR is equal to or greater than the sum of the unloaded vehicle weight (UVW) plus the net carrying capacity (NCC).

### UVW (UNLOADED VEHICLE WEIGHT)

The weight of the trailer as built at the factory. The UVW does not include cargo, fresh water, LP gas, factory or dealer installed accessories.

### NCC (NET CARRYING CAPACITY)

The maximum weight of personal belongings, food, fresh water, LP gas, tools, tongue weight of towed vehicle, factory and dealer installed accessories, etc., that can be carried by this motorhome. (NCC is equal to or less than GVWR minus UVW.) Please see your dealer for weights of factory installed options.



## STANDARDS AND OPTIONS

08

08

08

08

### CHASSIS AND SUSPENSION

	A4002FB	A4004FBW
Air Brakes - c/w Slack Adjusters	S	S
Air Suspension - c/w Sachs Tuned Shock Absorbers	S	S
Alternator - 160 Amp	S	S
Block Heater (1000 W) with Switch in Convenience Center	S	S
Chassis - Freightliner XC c/w Cummins ISL 425 HP, 1200 Ft. Lbs Torque Turbo Diesel Raised Rail Side Radiator w/ 2 Stage Engine Brake	S	S
Fuel Fill - Concealed Locking Fuel Fill Access On Both Sides	S	S
Hitch - Trailer Hitch Receiver w/ Wiring and Plug - 1000lb/10,000 lb.	S	S
IFS - ZF Independent Front Suspension w/ Air Disc Brakes	S	S
Tires - Radial 275/80R22.5	S	S
Transmission - Allison 3000 MH Six Speed Automatic c/w Lock Up & Transmission Cooler	S	S
Wheels - Aluminum Wheels (Front and Outer Duals)	S	S

### DRIVERS AREA CONVENIENCES

	A4002FB	A4004FBW
Blinds - Side Driver & Passenger Roller Blinds	S	S
Compass/Thermometer - Dash Mounted Directional Compass with Exterior Temperature	S	S
Cover - Hydraulic Powered Front Step Cover w/ Driver's and Passenger's Controls	S	S
Cruise Control	S	S
Dash Air Conditioning and Heat - Dual Blower in Steel Cage	S	S
Fan - Overhead Blower Above Windshield	S	S
GPS - Garmin GPS (Display on Rear View Monitor) w/ Remote	S	S
Mats - Driver/Passenger Floor mats	S	S
Mirrors - Heated Remote Chrome Power Mirrors	S	S
Pedals - Adjustable Gas and Brake Pedal with Infinitely Adjustable Tilt Telescopic Steering Column w/ Foot Pedal	S	S
Rearview & Side Turn Cameras w/ Monitor - Color LCD Display Mounted in Dash	S	S
Seat - Ultra Leather Swivel Driver Captain Chair with Integral Seat Belt - 8 Way Power	S	S
Seat - Ultra Leather Swivel Passenger "Buddy Seat" w/ Integral Seat Belt and Power Foot Rest - 8 Way Power	S	S
Steering Wheel - with Leather Cover, VIP Controls include Wiper and Washer	S	S
Sun Visor - Power Driver and Passenger Sun Visors	S	S
Switch - Battery Selector for Radio	S	S
Switch - Battery Boost (Coach to Chassis Batteries)	S	S
Transmission Temperature Gauge	S	S
Wipers - Wet Arm 28" Windshield Wipers c/w Intermittent Function	S	S

### VEHICULAR

	A4002FB	A4004FBW
Air Horns	S	S
Bumpers - Integrated Fiberglass - Steel Reinforced	S	S
Headlights - Styled with Halogen Bulbs	S	S
Jacks - "One Touch" Automatic HWH Leveling System c/w Automatic Air Dump	S	S
Light - High Mount Stoplight - LED Long Life	S	S
Lights - Halogen Automotive Driving Lights	S	S
Lights - LED Exterior Clearance Lights	S	S
Mud Guard - Monogrammed Triple E Rear Mudguard (Stainless Steel on Rubber)	S	S
Rust Protection	S	S
Undercoating - Automotive Type	S	S

### CONSTRUCTION

	A4002FB	A4004FBW
Baggage Doors - Aluminum Baggage Doors c/w Gas Struts and Slam Latches	S	S
Baggage Doors - Side Swing Aluminum Baggage Doors c/w Gas Struts and Rotary Latches Under Curbside Sideout		S
Fiberglass Molded Front & Rear Mask	S	S
Gel Coat Vetrolite Fiberglass Sidewalls	S	S
Lined and Lit Baggage Compartments	S	S
Roof - Domed Kenlite FRP Flexroof	S	S
Steel Cab Floor, Firewall and Dash Structure	S	S

### CONSTRUCTION (con't)

	A4002FB	A4004FBW
Vacuum Bonded Aluminum Framed Insulated Roof Construction	S	S
Vacuum Bonded Aluminum Framed Insulated Sidewall Construction with Thermal Break	S	S
Vacuum Bonded Steel Framed Insulated Floor Construction	S	S
Windows - Tinted Radius Corner Thermal Pane Windows	S	S

### COACH EXTERIOR

	A4002FB	A4004FBW
Cargo Slide - Mounted in Forward Baggage Bay	0	0
Cargo Slide - Mounted in Rear Baggage Bay	0	0
Diamondshield® Paint Protection Film on Front End	S	S
Door - Screened Entry Door with Deadbolt Lock and Remote Keyless Entry	S	S
Exterior Touchpad Keyless Entry - for alarm system, entrance door, power baggage door locks.	S	S
Handle - Entry Door Assist Handle (Interior Mounted)	S	S
Handle - Exterior Assist - Monogrammed	S	S
Ladder - Exterior Ladder c/w Detachable Lower Section	S	S
Lights - Deluxe Patio Lights (2)	S	S
Lights - Docking Lamps (2 per Side)	S	S

08

08

Paint - Full Body Exterior Paint with Clear Coat incl Striping on Slide Out End Walls	S	S
---	---	---

Power Baggage Door Locks (Side Swing Baggage Doors on Passenger Side Between Axles)	S	S
---	---	---

Step - Exterior Electric Retractable Entry Step	S	S
---	---	---

### COACH INTERIOR

08

08

08

08

	A4002FB	A4004FBW
84" Interior Ceiling Height	S	S
Cabinet Doors - Mitred with Rope Inlay with European Hidden Hinges	S	S
Cabinetry - Harvest Cherry w/Solid Cherry Face Frames, Cabinet Doors and Paneling	0	0
Cabinetry - Danish Walnut w/Solid Walnut Face Frames, Cabinet Doors and Paneling	0	0
Cabinetry - Natural Cherry w/ Solid Cherry Face Frames, Cabinet Doors and Paneling	S	S
Ceiling - Flat with Padded Vinyl Headliner	S	S
Covers - Insulated Vent Covers	0	0
Detectors - Electronic Smoke, LP and CO Detectors	S	S
Drawers - Full Extension Ball Bearing Drawer Tracks w/ Snap Latches	S	S
Fire Extinguisher - Dry Chemical	S	S

08

Flooring - Heated Tile Flooring with Granite Inlay in Galley, Living Area and Bath as per floorplan (Not Heated in Entrance Area)	S	S
---	---	---

Latches - Snap Latches on all Cabinet Doors	S	S
---	---	---

Lighting - Courtesy Floor Lamps	S	S
---------------------------------	---	---

Lighting - Halogen Lighting in Living Area w/ Dimmer Switch	S	S
---	---	---

Safe - Keylock Safebox	S	S
------------------------	---	---

Shades - Day/Night Pleated in Living Area	S	S
---	---	---

Slide Out - Electric Bed Slide Out on Drivers Side	S	S
--	---	---

Slide Out - Electric Slide - Dresser and Drawers		S
--	--	---

Slide Out - Flush Floor HWH Hydraulic System in Living Area w/ Electric Travel Locks	S	S
--	---	---

Slide Out - HWH Hydraulic Galley Slide on Passenger side		S
--	--	---

--	--	--

--	--	--

--	--	--

--	--	--

--	--	--

--	--	--

--	--	--

--	--	--

--	--	--

--	--	--

--	--	--

--	--	--

--	--	--

--	--	--

--	--	--

--	--	--

--	--	--

--	--	--

--	--	--

--	--	--

--	--	--

08 New for 2008

S Standard

0 Option



## STANDARDS AND OPTIONS

	A4002FB	A4004FBW
<b>GALLEY FEATURES (con't)</b>		
Countertop - Solid Surface Countertop c/w Matching Cutting Board Sink Covers and Stainless Steel Sink	S	S
Dishwasher (N/A with Gas Oven Option)	0	0
Faucets - Deluxe Single Lever Faucet w/ Spray	S	S
Light - Fluorescent Light on Ceiling in Galley	S	S
Micro/Convection Oven - Stainless Steel Finish (OTR) c/w 110v Range Hood and Light	S	S
Oven - 21" LP Gas Oven (N/A with Dishwasher Option)	0	0
<b>08</b> Refrigerator - 4 Door 12 cu. Ft. c/w Ice Maker and Water in the Door - LP/Electric, Stainless Steel Finish Doors w/ Ignition Lock	S	S
Slide Out Butcher Block on Locking Tracks c/w Knife Drawer - In Lieu of Top Drawer Under Cooktop (N/A w Oven option)	0	0
<b>LAVATORY</b>		
Countertop - Solid Surface Counter and Basin	S	S
Faucet - Deluxe Faucets	S	S
Shower - Neo Angle Fiberglass Enclosed Shower w/ Glass Shower Doors	0	0
Sink - Stainless Sink with Deluxe Faucet in Toilet Room	S	S
Skylight - Residential Dual Pane Neo Angle in Shower Compartment	S	S
Toilet - Concerto China Toilet With Spray	S	S
Tub - Enclosed Fiberglass Garden Tub w/ Glass Shower Doors	S	S
Window - w/ Valance and Venetian Blind in Toilet Room	S	S
<b>BEDROOM</b>		
<b>08</b> Bedspread - Decorative Bedspread c/w Throw Pillows and Decorative Throw	S	S
Closet - Cedar Lined Wardrobe in Bedroom	S	S
Dresser - Residential Style Dresser with Mirror and Tip Out Laundry Hamper	S	
Headboard - Wood Framed and Upholstered	S	S
Lighting - Halogen Lighting in Bedroom w/ Dimmer Switch		
Mattress - Residential Premium Quality	S	S
Shades - Day/Night Pleated w/ Blackout	S	S
Storage - Under bed Storage Drawer	S	S
<b>ENTERTAINMENT</b>		
CB Antenna - includes Labeled Coax Lead in under Dash	S	S
CD Changer - 10 Stack CD Changer (N/A with Touch Screen GPS Option)	0	0
<b>08</b> GPS Touch Screen Navigation System c/w CD w XM Satellite Prewire and Antenna (subscription not included), Bluetooth Phone Connection and Ipod Dock ILO Std Garmin GPS and Std Dash Stereo (N/A with 10 Stack CD Changer Option) Bluetooth available Autumn, 2007	0	0
Home Theater System - 500W - 6 Channel w/ Subwoofer with DVD	S	S
Master Control - Deluxe Audio/Video Master Control Switch Box W/ RCA Cables	S	S
Prewire - Satellite Dish Prewire (with 12V Power and Motosat Cable)	S	S
Satellite Dish - Motosat 18" Executive w/ DVB Automatic Acquisition and Identification	0	0
<b>08</b> Satellite Dish - Explorer Dish for Starchoice - Automatic Acquisition	0	0
Satellite Radio Prewire - including Satellite Antenna (Subscription not Included) (replaced by XM w/ GPS Option)	S	S
<b>08</b> Satellite Dish - Winegard with Electronic Elevation Sensor	0	0
<b>08</b> Satellite Dish - High Definition Satellite Dish (HD on Living Area TV Only) - Motosat	0	0
Stereo - AM/FM/CD/MP3 Sirius Ready Player in Dash w/ Wireless Remote and Auxiliary Input	S	S
Stereo - Exterior AM/FM - CD Stereo with Shielded Speakers (N/A with Baggage compartment TV options)	0	0
Stereo - Separate AM/FM CD and DVD Stereo in Bedroom c/w Alarm	S	S
Telephone & Cable TV Hook-up - Exterior	S	S
TV - AC 20" LCD on Extendable Swing Out Mount in Baggage Compartment (with AM/FM/CD/DVD Player including Shielded Speakers)	0	0
TV - AC 20" LCD Color Stereo TV c/w Remote in Bedroom	S	S
<b>08</b> TV - AC 37" LCD Widescreen TV c/w Remote in Entertainment Cabinet Behind Slide Out	S	S
TV - AC 32" LCD Widescreen TV c/w Remote in Front Overhead Cabinet in Addition to 37" LCD in Hatch	0	0
TV Antenna - Roof Top Retractable Antenna c/w Booster w. Dash Mounted "Antenna Up" light	S	S
<b>HEATING, VENTILATING AND AIR CONDITIONING</b>		
Air Conditioner - Dual (2) Centrally Ducted 13,500 BTU w Heat Strip and Remote Return Air	S	S
Air Conditioner - Dual (2) Centrally Ducted 13,500 BTU w/ Heat Pumps	0	0

	A4002FB	A4004FBW
<b>HEATING, VENTILATING AND AIR CONDITIONING (con't)</b>		
Fan - Fantastic Non Reversible Thermostatically Controlled In Lavatory w/ Wall Switch and Rain Sensor	S	S
Fan - Fantastic Non Reversible Thermostatically Controlled In Toilet Room w/ Wall Switch and Rain Sensor	S	S
Fan - Reversible Thermostatically Controlled Fantastic Fan in Living Area w/ Wall Switch and Rain Sensor	S	S
Fan - Reversible Thermostatically Controlled Fantastic Fan in Bedroom w/ Wall Switch and Rain Sensor	S	S
Furnaces - Front 35,000 BTU and Rear 25,000 BTU Central Furnaces c/w Electronic Ignition and In Floor Ducting	S	S
Heater - Dual Rear Auxiliary Automotive Heaters c/w Electric Control Valves	S	S
<b>ELECTRICAL</b>		
Alarm System c/w 2 Motion Detectors	S	S
Batteries - 4 x 6V Deep Cycle Auxiliary Battery c/w Slide Out Tray	S	S
Battery Disconnect - Chassis Batteries	S	S
Bi Directional Isolator Relay Delay (BIRD) Battery Charging System	S	S
Convenience Center- Mounted Mid Ship includes, Level Monitor, Block heater, Thermostat, EMS controls, Inverter Control	S	S
Energy Command 30 - Onan Automatic Generator Control	S	S
Generator - 8.0 KW Onan Quiet Diesel w/ Hour Meter in Convenience Center	S	S
<b>08</b> Inverter - 2000 Watt Inverter c/w 100 Amp Charger with Remote	S	S
Panel - 50 Amp Electrical Service c/w Energy Management System	S	S
Power Cord Reel - 50 Amp Power Cord Reel	S	S
Prewire - 110V/12V Receptacles in Baggage Compartment (Freezer Prep)	S	S
Prewire - for Solar Panel	S	S
Prewire - Satellite Dish (with 12V Power, Ground, RG-6 Coax and Fish Wire)	S	S
Prewire For Power Main Awning	S	S
Receptacle - Patio GFI Receptacle	S	S
Switch - Electronic Battery Disconnect (Coach Batteries)	S	S
<b>PLUMBING AND LP SYSTEMS</b>		
Black Tank Flush System	S	S
Exterior Shower	S	S
Holder - Swing Out Underbody Sewer Hose Holder	S	S
Holding Tanks - Enclosed and Insulated, Dual Heated Waste Holding Tanks	S	S
LP Tank - Easy Access Propane Tank	S	S
Monitor Panel in Utility Module		
Washer/Dryer Prep Package	S	S
Water Filter - Whole House Water Filter in Utility Module	S	S
Water Heater - 16 Gallon Equivalent Electronic Ignition Gas/Electric/Motoraid Water Heater	S	S
Water Hose Reel	S	S
Water Pump - Variable Speed Water Pump w/ 3 Way Switching	S	S
Water Tank - Enclosed and Insulated, Dual Heated Fresh Water Tank	S	S
Winterization System - c/w On Board Potable Antifreeze Pick Up Tank	S	S
<b>SYSTEMS</b>		
Central Vacuum - w/ Outlet in Baggage Compartment	S	S
Freezer / Refrigerator - On Slide Out Tray 1.38 Cu Ft (AC/DC)	0	0
Washer/Dryer (vented)	0	0
<b>AWNING PACKAGE</b>		
Awning - Weathershield Equipped A&E Elite Window Awnings (Main Slide Windows & Bedroom Window)	0	0
<b>08</b> Power Awning Package includes:	S	S
Black Awning Hardware		
Front Door Awning - A&E Oasis Power w/ Remote		
Weathershield Equipped A&E Elite Slide Topper (Number of Awnings Shown)		
Weathershield Equipped Weatherpro Power - Acrylic w/ Remote and Wind Sensor 19 Ft		
<b>CERTIFICATION</b>		
Factory P.D.I.	0	0





## Two Year Limited Warranty

Triple E is proud to offer a two year limited warranty on structure as well as most major components. Please see your dealer for further details.

## Coach Net

Triple E is a proud partner of Coach Net, an extensive support program providing complete and fully paid roadside assistance, emergency road service, and special warranty support benefits that follow you throughout Canada and the U.S. Service is free for the first year of ownership and available at a nominal fee for subsequent years.

## Coach Net's 24-Hour Customer Care

- Emergency roadside assistance, including tow vehicle
- Toll free technician hotline for operation and service support
- Toll free nationwide service appointment assistance
- Free custom trip routing and colour maps
- Warranty service at over 6,800 locations throughout North America
- Benefits such as free jump starts, tire changes, fuel delivery and lock-out service



**Triple E Recreational Vehicles** P.O. Box 1230, Winkler, Manitoba, Canada R6W 4C4 Telephone: (204) 325-4361 Fax: (204) 325-5241

Triple E Recreational Vehicles are designed and built to meet or surpass CSA-RVIA standards covering electrical services, gas services, plumbing services and vehicular safety. Empress Motorhomes exceed 96" in width. In some states, 96" is the maximum width of vehicles travelling some or all state roads. It is the responsibility of the owner to be familiar with the road usage laws of the states in which you travel. Product improvement is a continuing process at Triple E Recreational Vehicles. We reserve the right to change specifications on any or all products without prior notice; errors and omissions excepted. Triple E Recreational Vehicles is under no obligation to undertake modification to units manufactured prior to changes on specifications. Brochure pictures may be shown with optional equipment. Colours may not be exactly as shown due to the printing process. Please see your dealer for specific colours.

