

Signature 2008

Follow your dream

SIGNATURE 2008



Refined Living

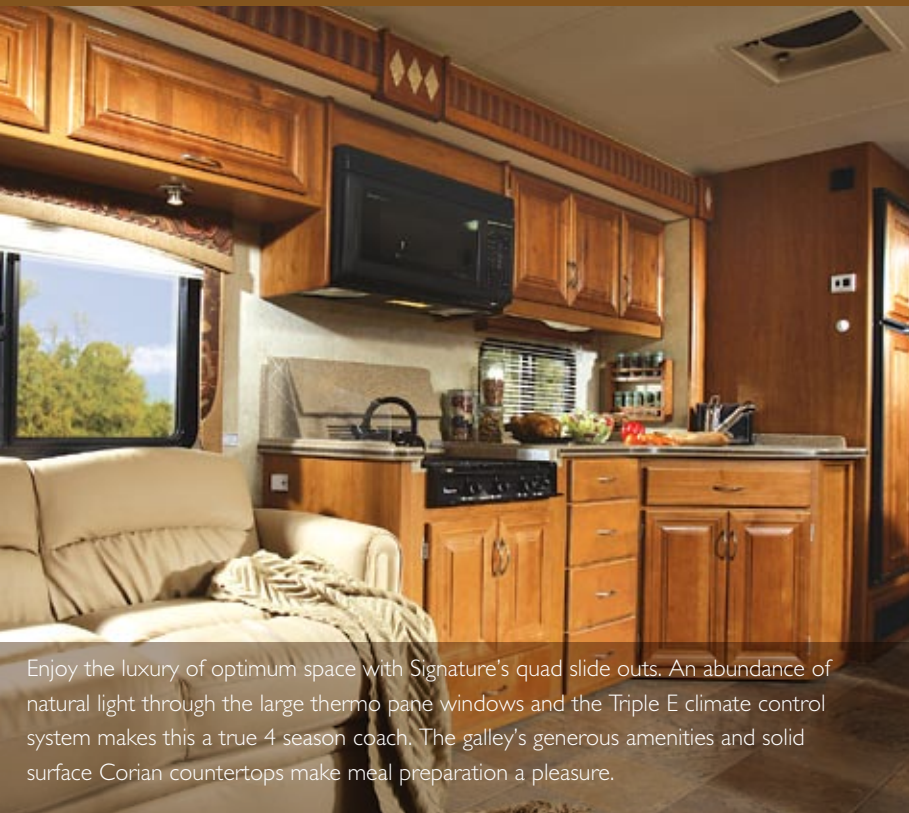
Hit the highway in high style with our newest model, the unmistakable Signature. Wherever your adventures lead you'll be turning heads because this coach makes a luxury statement inside and out. Floating on Air Suspension, this Signature is a 37' vacation home powered along by a Cummins Engine in a Freightliner chassis. All the remarkable comforts of refined living, on the road.



Smart swing out wall allows for additional space and provides much desired storage to keep this bathroom neat and tidy.

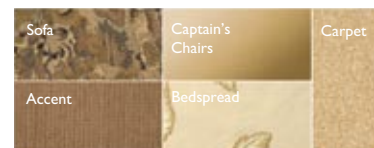


Such a BIG difference: dual slides and huge windows create a grand space. A residential size and quality mattress ensure a good night's rest. Ample drawer space, laundry hamper, cabinets and hanging storage complete the picture. A well-designed cabinet houses the optional washer dryer.



Enjoy the luxury of optimum space with Signature's quad slide outs. An abundance of natural light through the large thermo pane windows and the Triple E climate control system makes this a true 4 season coach. The galley's generous amenities and solid surface Corian countertops make meal preparation a pleasure.

Décor



Whistler Lodge



Sundance



Masterpiece

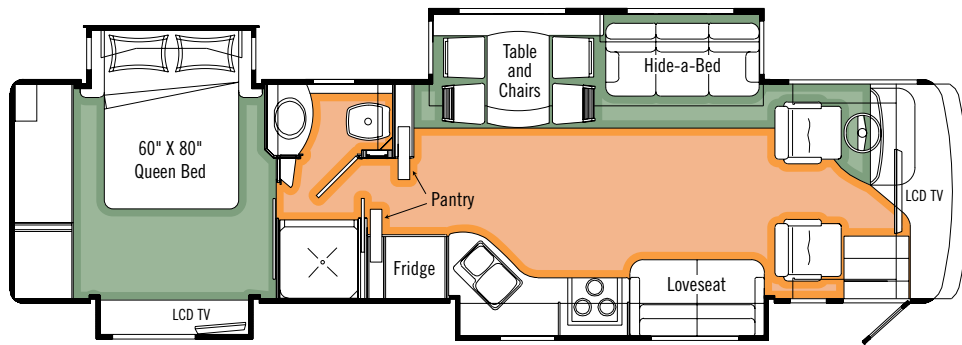


Egyptian Sand

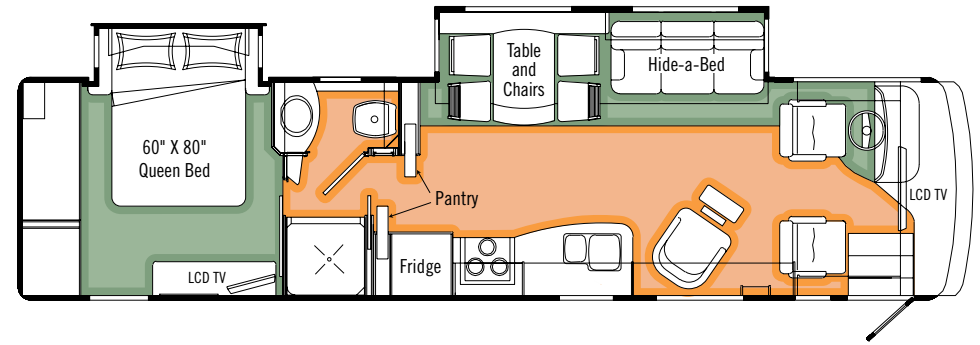
Specifications

<i>Signature 2008</i>	A371Q	A372D
GVWR-LBS(KG)	30020(13616)	30020(13616)
UVW-LBS(KG)	24010(10890)	TBD
NCC-LBS(KG)	6010(2726)	TBD
WHEELBASE-IN(mm)	228"(5791)	228"(5791)
LENGTH-FT(mm)	37'6"(11430)	37'6"(11430)
WIDTH-FT(mm)	8'4"(2534)	8'4"(2534)
HEIGHT Incl.A/C-FT(mm)	12'4"(3759)	12'4"(3759)
**WATER TANK CAP.-GAL(L)	102(386)	102(386)
WATER HEATER	10(38)	10(38)
BLACK HOLDING TANK CAP.-GAL(L)	57(216)	57(216)
GREY HOLDING TANK CAP.-GAL(L)	57(216)	57(216)
FUEL CAP.-GAL(L)	100(379)	100(379)
PROPANE CAP.-GAL(L)	32(121)	32(121)

**Includes Water Heater



A371Q



A372D

Vinyl

Carpet

STANDARDS AND OPTIONS

BEDROOM

Bedspring - Decorative Bedspring c/w Throw Pillows	S	S
Lighting - Fluorescent Lighting in Bedroom	S	S
Mattress Upgrade	0	0
Mattress - Residential Quality	S	S
Shades - Day/Night Pleated w/ Blackout	S	S

ENTERTAINMENT

CB Antenna - includes Labeled Coax Lead in under Dash	0	0
Prewire - Satellite Dish Prewire (with 12V Power and Motosat Cable)	S	S
Radio Monoplex System - Switching for Rear Bedroom Speakers	S	S
Satellite Dish - Explorer Dish for Starchoice - Automatic Acquisition	0	0
Satellite Dish - Motosat 18" Executive w/ DVB Automatic Acquisition and Identification	0	0
Satellite Dish - Winegard with Electronic Elevation Sensor	0	0
Satellite Radio Prewire - including Satellite Antenna (Subscription not Included)	0	0
Stereo - AM/FM/CD/MP3 Sirius Ready Player in Dash w/ Wireless Remote and Auxiliary Input	S	S
Stereo - Home Theater System - 5 Channel Stereo with Subwoofer	S	S
Telephone & Cable TV Hook-up - Exterior	S	S
TV - AC 20" LCD Color Stereo TV c/w Remote in Bedroom	S	S
TV - AC 26" LCD Widescreen TV c/w Remote in Front Overhead Cabinet	S	S
TV Antenna - Roof Top Retractable Antenna c/w Booster	S	S

HEATING VENTILATING AND AIR CONDITIONING

Air Conditioner - Dual (2) Centrally Ducted 13,500 BTU w Heat Strip and Remote Return Air	S	S
Fan - Fantastic Non Reversible Thermostatically Controlled In Lavatory w/ Wall Switch	S	S
Fan - Fantastic Non Reversible Thermostatically Controlled In Toilet Room w/ Wall Switch	S	S
Fan - Reversible Thermostatically Controlled Fantastic Fan in Bedroom w/ Wall Switch	S	0
Fan - Reversible Thermostatically Controlled Fantastic Fan in Living Area w/ Wall Switch	S	S
Furnance - Central Forced Air Furnace - 40,000 BTU	S	S
Heater - Dual Rear Auxiliary Automotive Heater c/w Electric Control Valve	S	S

ELECTRICAL

Batteries - 2 x 6V Deep Cycle Auxiliary Coach Batteries on Slide Out Tray	S	S
Bi Directional Isolator Relay Delay (BIRD) Battery Charging System	S	S
Convenience Center- Mounted Mid Ship includes Level Monitor, Block heater, Thermostat, EMS Controls and Optional Inverter Control	S	S
Generator - 5.5 KW Onan Quiet Diesel w/ Hour Meter in Convenience Center	S	S
Inverter - 2000 Watt Inverter c/w 100 Amp Charger with Remote and 2 Additional Six Volt Batteries	0	0
Panel - 50 Amp Electrical Service c/w Energy Management System	S	S

ELECTRICAL (con't)

Prewire - for Solar Panel	S	S
Prewire - Satellite Dish (with 12V Power, Ground, RG-6 Coax and Fish Wire)	S	S
Prewire For Power Main Awning	S	S
Receptacle - Patio GFI Receptacle	S	S
Switch - Battery Disconnect (Coach Batteries)	S	S

PLUMBING AND LP SYSTEMS

Black Tank Flush System	S	S
Exterior Shower	S	S
Holding Tanks - Enclosed and Insulated, Dual Heated Waste Holding Tanks	S	S
LP Tank - Easy Access Propane Tank	S	S
Roughed in Plumbing for Washer Dryer	S	S
Water Filter - Whole House Water Filter in Utility Module	S	S
Water Heater - 10 Gallon Electronic Ignition Gas/Electric/Motoraid	S	S
Water Tank - Enclosed and Insulated, Dual Heated Fresh Water Tank	S	S
Winterization System c/w Antifreeze Pickup	S	S

SYSTEMS

Central Vacuum - w/ Outlet in Baggage Compartment	0	0
Washer/Dryer (vented)	0	0

AWNING PACKAGE

Manual Awning Package includes:	S	S
Front Door Awning - A&E Oasis Manual		
Weathershield Equipped A&E Elite Slide Toppers (Number of Awnings Shown)	3	2
Weathershield Equipped 2 Step Patio Awning - Acrylic - 19'		
Black Awning Hardware		
Power Awning Package includes:	0	0
Front Door Awning - A&E Oasis Power w/ Remote		
Weathershield Equipped A&E Elite Slide Topper (Number of Awnings Shown)	3	2
Weathershield Equipped Weatherpro Power - Acrylic w/ Remote and Wind Sensor 19 Ft		
Black Awning Hardware		
Awning - Weathershield Equipped A&E Elite Window Awnings (Main Slide Windows & Bedroom Window)	0	0

CERTIFICATION

CSA Certification	S	S
RVIA Certification	0	0
Factory P.D.I.	0	0

STANDARDS AND OPTIONS

	A371Q	A372D
CHASSIS AND SUSPENSION		
Air Brakes - c/w Slack Adjusters	S	S
Air Suspension - c/w Sachs Tuned Shock Absorbers	S	S
Alternator - 160 Amp	S	S
Block Heater (1000 W)	S	S
Chassis – Freightliner XC - Cummins 6.7L ISB 340 HP / 660 Ft Lb Turbo Diesel Raised Rail Rear Radiator w/ Exhaust Brake	S	S
Clutched Radiator Fan	S	S
Fuel Fill - Concealed Locking Fuel Fill Access On Both Sides	S	S
Hitch - Trailer Hitch Receiver w/ Wiring and Plug - 1000lb/10,000 lb.	S	S
Tires- Radial – 255/80R22.5 w/ Wheel Simulators	S	S
Transmission - Allison 2500MH Series Six Speed Automatic c/w Lock Up & Transmission Cooler	S	S
DRIVERS AREA CONVENIENCES		
Cameras - Side Turn Cameras	0	0
Cruise Control	S	S
Dash Air and Heat - Dual Blower in Steel Cage	S	S
Fan - Overhead Blower Above Windshield	S	S
Mirrors - Front Mounted Heated Remote Power Mirrors	S	S
Rearview Camera w/ Monitor Mounted in Dash	S	S
Seat - Optima Leather Swivel Driver Captain Chair - 6 Way Power w/ Infinity Adjustable Arms	S	S
Seat - Optima Leather Swivel Passenger w/ Manual Foot Rest w/ infinity Adjustable Arms	S	S
Steering Wheel - Tilt Telescopic	S	S
Sun Visor - Driver and Passenger Sun Visors	S	S
Switch - Battery Selector for Radio	S	S
Switch - Battery Boost (Chassis to Coach Batteries)	S	S
Transmission Temperature Guage	S	S
Wipers - Wet Arm 32" Windshield Wipers c/w Intermittent Function	S	S
VEHICULAR		
Bumpers - Integrated Fiberglass – Steel Reinforced	S	S
Headlights - Styled with Halogen Bulbs	S	S
Jacks - HWH "One Touch" Automatic Leveling System w/ Dash Mounted Air Dump Switch	S	S
Light - High Mount Stoplight – LED Long Life	S	S
Lights - Halogen Automotive Driving Lights	S	S
Rust Protection	0	0
Undercoating - Automotive Type	S	S
CONSTRUCTION		
Baggage Doors - Aluminum Baggage Doors c/w Gas Struts and Slam Latches	S	S
Baggage Doors - Side Swing Aluminum Baggage Doors c/w Gas Struts and Slam Latches Under Curbside Slideout	S	
Fiberglass Molded Front & Rear Mask	S	S
Gel Coat Vetrolite Fiberglass Sidewalls	S	S
Lined and Lit Baggage Compartments	S	S
Roof - Domed Kemlite FRP Flexroof	S	S
Steel Cab Floor, Firewall and Dash Structure	S	S
Vacuum Bonded Aluminum Framed Insulated Roof Construction	S	S
Vacuum Bonded Aluminum Framed Insulated Sidewall Construction with Thermal Break	S	S
Vacuum Bonded Steel Framed Insulated Floor Construction	S	S
Windows - Tinted Radius Corner Thermal Pane Windows	S	S

	A371Q	A372D
COACH EXTERIOR		
Diamondshield® Paint Protection Film on Front End	0	0
Door - Screened Entry Door with Deadbolt Lock	S	S
Handle - Entry Door Assist Handle (Interior Mounted)	S	S
Handle - Exterior Assist - Monogrammed	S	S
Ladder - Exterior Ladder c/w Detachable Lower Section	S	S
Lights - Deluxe Patio Light	S	S
Lights - Docking Lamps (2 each Side)	S	S
Paint - Full Body Exterior Paint with Clear Coat	S	S
Exterior Electric Retractable Entry Step	S	S
COACH INTERIOR		
84" Interior Ceiling Height w/ Padded Vinyl Headliner	S	S
Cabinet Doors - Mitred Contemporary Styled Solid Wood Cabinet doors	S	S
Covers - Insulated Vent Covers	0	0
Detectors - Electronic Smoke, LP and CO Detectors	S	S
Drawers - Full Extension Ball Bearing Drawer Tracks w/ Snap Latches	S	S
Fire Extinguisher - Dry Chemical	S	S
Flooring - Carpet w/ Underlay in Living and Bedroom Areas	S	S
Flooring - High Pressure Laminate Flooring in Galley, and Bath as per floorplan	S	S
Latches - Snap Latches on all Cabinet Doors	S	S
Lighting - Courtesy Floor Lamps	S	S
Lighting - Fluorescent Aisle Lighting	S	S
Pillows - Color coordinated pillows in Living Area	S	S
Shades - Day/Night Pleated in Living Area	S	S
Slide Out - Electric Bed Slide Out on Drivers Side	S	S
Slide Out - Electric Slide - Dresser and Drawers	S	
Slide Out - Flush Floor HWH Hydraulic System in Living Area	S	S
Slide Out - HWH Hydraulic Galley Slide on Passenger side	S	
Upholstered Window Coverings in Living Area	S	S
FURNITURE		
Booth Dinette With Slide Out Drawers and Wall Mount Solid Wood Table (Hutch Deleted)	0	0
Hide A Bed - Ultra Leather on the Driver's Side w/ Air Coil Mattress	S	S
Love Seat - Optima Leather on Passenger's Side	S	0
Recliner - Optima Leather Recliner with Solid Wood Flip Table		S
Table - Solid Wood Extendable Cantilevered Wall Mount Table w/ Hutch c/w 2 Solid Wood Chairs and 2 Folding Chairs	S	S
GALLEY FEATURES		
Backsplash - Solid Surface Backsplash in Galley	S	S
Cook Top - Recessed Cook Top c/w High Output Burner and Solid Surface Recessed Bi-fold Range Cover	S	S
Countertop - Solid Surface Countertop c/w Matching Cutting Board Sink Covers and Stainless Steel Sink	S	S
Faucets - Deluxe Single Lever Faucet w/ Sprayer	S	S
Micro/Convection Oven - Black Finish (OTR) c/w 110v Range Hood and Light	S	S
Oven - 21" LP Glass Door Oven	0	0
Refrigerator - 4 Door LP/Electric 12 cu. Ft. c/w Ice Maker - Cherry Finished Framed Raised Panel Inserts w/ Ignition Lock	0	0
Refrigerator - Dometic LP/Electric 9 Cu. Ft. w/ Temp Control w/ Cherry Finished Framed Raised Panel Inserts	S	S

S Standard 0 Option



Two Year Limited Warranty Triple E is proud to offer a two year limited warranty on structure as well as most major components. Please see your dealer for further details.

Triple E Recreational Vehicles P.O. Box 1230, Winkler, Manitoba, Canada R6W 4C4 Telephone: (204) 325-4361 Fax: (204) 325-5241 www.tripleerv.com

Triple E Recreational Vehicles are designed and built to meet or surpass CSA-RVIA standards covering electrical services, gas services, plumbing services and vehicular safety. Signature motorhomes exceed 96" in width. In some states, 96" is the maximum width of vehicles travelling some or all state roads. It is the responsibility of the owner to be familiar with the road usage laws of the states in which you travel. Product improvement is a continuing process at Triple E Recreational Vehicles. We reserve the right to change specifications on any or all products without prior notice; errors and omissions excepted. Triple E Recreational Vehicles is under no obligation to undertake modification to units manufactured prior to changes on specifications. Brochure pictures may be shown with optional equipment. Colours may not be exactly as shown due to the printing process. Please see your dealer for specific colours.

