

Diesels 2010

Empress / Invitation / Signature

Experience the Difference



DIESELS 2010



Empress

Featuring curved, finely detailed cherry cabinetry with rope inlay, the elegant Empress galley will cater to the most discriminating of chefs. Designed around sleek stainless-steel appliances (4-door, 12 cu ft refrigerator with icemaker, water dispenser and ignition lock; micro/convection oven; optional dishwasher with cherry wood front) and complete with halogen lighting for ambiance, the Empress offers an undeniably luxurious living space.

Inspired Elegance

Exult in the freedom of the open road in the awe-inspiring Empress. Our flagship coach is a true tour de force, an exhilarating fusion of superlative interior luxury, inspired design and outstanding drivability. The powerful Cummins ISL-425 HP diesel engine, mounted on a solid Freightliner chassis, will spirit you comfortably away to your next destination while you enjoy the abundant amenities, spacious interior and distinctive furnishings inside. And it's all protected by Triple E's exclusive Climate Guard® system, the best interior comfort and exterior protection package available in the recreational vehicle industry. So go and pursue happiness, wherever it may be, and enjoy the ride.



A4004Q in optional Washington Cherry wood finish.



A4004Q in optional Washington Cherry wood finish.



A4005Q in standard Natural Cherry wood finish.

Exquisitely adorned in handmade bedspread and matching throw pillows, the premium quality king size bed (optional) with wood-framed matching headboard will insure you sleep in royal comfort every night of your journey. Enhance the beauty of your chosen décor (4 available) with the adjustable intensity halogen lighting.



Triple E's Exclusive Climate Guard® System

Born of our northern heritage, Triple E's exclusive Climate Guard® system is quite simply the best interior comfort and exterior protection package available in the recreational vehicle industry today. The Climate Guard® system has been developed with today's motorhome enthusiast in mind. It provides year round climate controlled comfort for passengers as well as built in protection for the motorhome itself, ensuring years of trouble free operation and enjoyment.

The major considerations in building a top quality motorhome are long lasting beauty coupled with the ability to stand up to all weather conditions. The coach is an aluminium and steel framed structure with vacuum bonded GelCoat fibreglass sidewalls and a domed roof finished with a seamless FRP Flexroof.

All of the models in this brochure are built using the Climate Guard® system. For more information and complete details, please visit our website at: www.tripleerv.com/climateguard.html.



Empress



Exterior Options



Cabernet



Cranberry Rouge

Décor

Furniture

Accent/Dining Chair

Optional Sofa

Bedsread

Carpet



Encore



Sun Chasers



Tranquil Mist



Cole Harbour

Colours may not be exactly as shown due to the printing process. Please see your dealer for specific colours.

Wood



Standard Natural Cherry
with rope inlay



Optional Washington Cherry
with rope inlay



Optional Glazed Harvest Cherry
with rope inlay

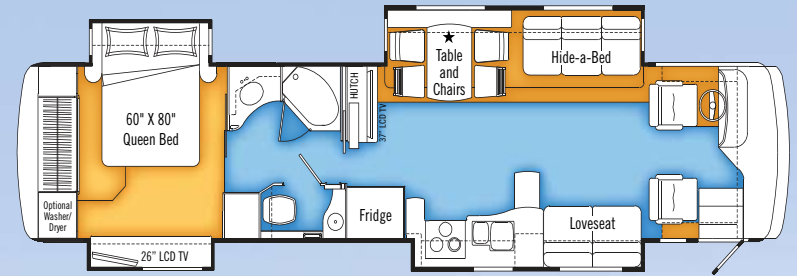


Driftwood

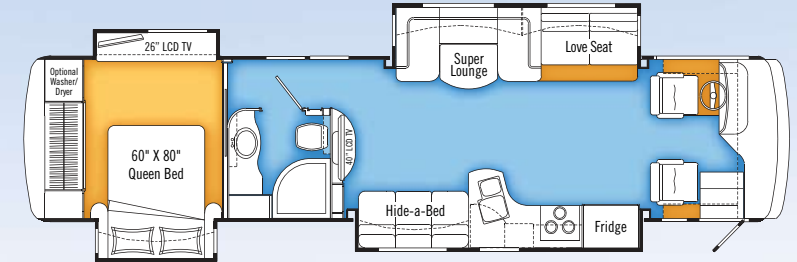


Glowing Embers

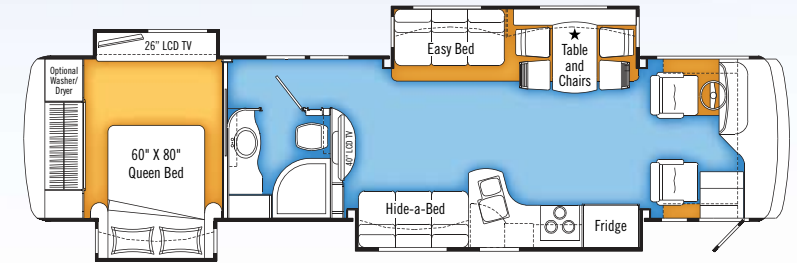
Floorplans



A4004Q



A4005Q



A4006Q

Heated tile w/granite inlay

Carpet

★ Optional Booth Dinette

Invitation



Pictures on these 2 pages are of the A393T in optional Harvest Cherry wood finish.



Highway Star

Here's an Invitation to let the good times roll! This is the perfect way to chase your dreams, whether that's sight-seeing across the country, traveling south to escape old man winter or playing great golf courses around the continent. With standard 360 HP Cummins diesel (or optional 400 HP Cummins diesel) great driving features, richly-appointed interior and highest quality construction, Invitation delivers at every level.



The residential quality 60" x 80" queen size bed is complemented by a decorative bedspread and matching ensemble of throw pillows and shams. Choose from four distinctive décors. Outstanding features include fabric-wrapped headboard, abundant wardrobe space, LCD TV with remote, and day/night pleated shades with blackout.



Wood *(See Page 9 for Decors)*

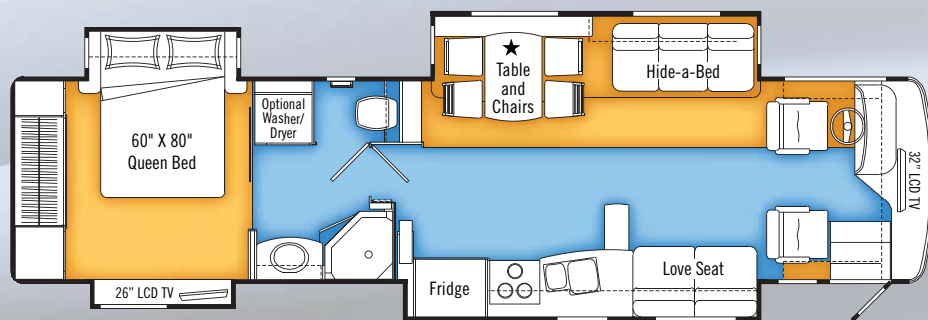


Standard Natural Cherry

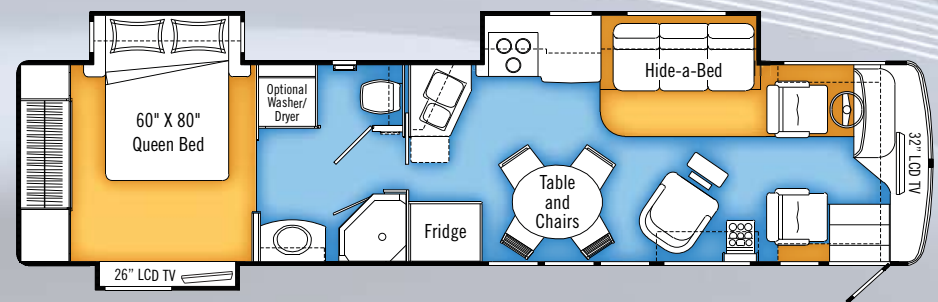


Optional Harvest Cherry

Floorplans



A391Q



A393T



Exterior Options



Aztec Pearl



Cabernet Pearl



Forest Pearl



Riviera Pearl

Signature

Seasoned Explorer

Experience pure joy on the open road in the 2010 Signature, the latest addition to the Triple E motorhome family. This eye-popping 37-foot diesel pusher is dressed to the nines and features two slides or four to suit your lifestyle. Truly a home for all seasons, the Signature's climate controlled thermal pane windows and winter-friendly construction will keep you snug as a bug no matter where or when you go. So no matter which direction your heart and your compass point you, the Signature will be your dependable and stylish companion year round.

The HWH hydraulic flush floor slideout gives the elegant and spacious living area an almost seamless surface. By day, the sofa and ultra leather chairs offer exceptional comfort for you to enjoy the 32" LCD TV and home theater system. By night, the hide-a-bed boasts an air coil mattress to make guests feel like part of the family.

Pictures on this page are of the A371Q.



No detail has been overlooked in the Signature bedroom. A full hanging wardrobe with full-length dressing mirrors, decorative bedspread with throw pillows, residential queen size bed, directional overhead lighting, ample overhead storage, and 19" LCD tv are some of the standard luxuries you'll enjoy in this bedroom fit for royalty.



Exterior Options



Blue Currant

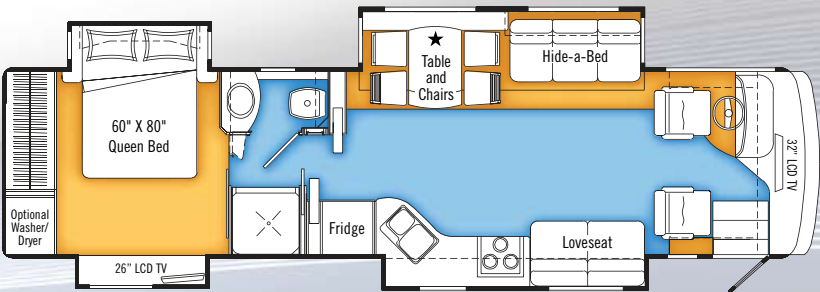


Gold Currant



Red Currant

Floorplans



A371Q

Laminate or Porcelain Tile Carpet ★ Optional Booth Dinette

Décor (Invitation & Signature)

Furniture Sofa Accent Bedspread Carpet



Encore



Tranquil Mist



Sun Chasers



Cole Harbour



The suite of appliances, including an optional 4-door 12 cu.ft. refrigerator and 21" LP glass door oven, make it easy for the creative juices to flow.

Wood (Signature Only)



Chestnut Cherry

The rich chestnut cherry wood cabinetry, standard in the Signature is complemented by the solid surface backsplash and bifold range cover.

EMPRESS STANDARD FEATURES

| 2010 EMPRESS STANDARD FEATURES | A4004Q | A4005Q | A4006Q |
|---|--------|--------|--------|
| Chassis – Freightliner XC c/w Cummins ISL 425 HP / 1200 Ft Lbs Torque Turbo Diesel Raised Rail Side Radiator w/2 Stage Engine Brake | S | - | - |
| Fuel Fill - Concealed Locking Fuel Fill Access On Both Sides | S | - | - |
| Hitch - Trailer Hitch Receiver w/Wiring and Plug - 1000lb/10,000 lb | S | S | S |
| IFS - ZF Independent Front Suspension w/ Air Disc Brakes | S | S | S |
| Tires - Radial 275/80R22.5 | S | S | S |
| Transmission - Allison 3000 MH Six Speed Automatic c/w Lock Up & Transmission Cooler | S | - | - |
| Wheels - Aluminum Wheels (Front and Outer Duals) | S | S | S |
| Cover - Hydraulic Powered Front Step Cover w/ Driver and Passenger Controls | S | S | S |
| Pedals - Adjustable Gas and Brake Pedal with Infinitely Adjustable Tilt Telescopic Steering Column w/Foot Pedal | S | S | S |
| Rearview & Side Turn Cameras w/ Monitor – Color LCD Display Mounted in Dash | S | - | - |
| Seat - Ultra Leather Swivel Driver & Pass. Chairs with Integral Seat Belt - 8 Way Power Air Horns | S | S | S |
| Jacks - "One Touch" Automatic HWH Leveling System c/w Automatic Air Dump | S | S | S |
| Mud Guard - Monogrammed Triple E Rear Mudguard (Stainless Steel on Rubber) | S | S | S |
| Rust Protection | S | S | S |
| Baggage Doors - Aluminum Baggage Doors | S | S | S |
| Vacuum Bonded Aluminum Framed Insulated Sidewall, Roof & Floor Construction | S | S | S |
| Windows - Tinted Radius Corner Thermal Pane Windows | S | S | S |
| Diamondshield® Paint Protection Film on Front End | S | S | S |
| Paint - Full Body Exterior Paint with Clear Coat incl Striping on Slide Out End Walls | S | S | S |
| Ext. Touch Pad Keyless Entry - For Alarm, Entrance Door & Power Baggage Door Locks | S | S | S |
| Windshield - One Piece | S | S | S |
| 84" Interior Ceiling Height | S | S | S |
| Cabinetry - Natural Cherry w/ Solid Cherry Face Frames, Cabinet Doors and Paneling | S | S | S |
| Flooring - Heated Tile Flooring with Granite Inlay in Galley, Living Area and Bath as per floorplan (Not Heated in Entrance Area) | S | S | S |
| Lighting - Halogen Lighting in Living Area w/Dimmer Switch | S | S | S |
| Electric Bedroom Slides c/w Electric Locks | S | S | S |
| Hydraulic Slides in Living/Galley Area c/w Locks | S | - | - |
| Chain Drive Flush Floor Slide Mechanisms on living Room slide | - | S | S |
| Chain Drive Slide Mechanisms on galley slides | - | S | S |
| Curved Contemporary Styled Cabinetry | - | S | S |
| Love Seat - Ultra Leather | S | - | - |
| Easy Bed - Ultra Leather Easy Bed | - | - | S |
| Table - Solid Surface Extendable Cantilevered Wall Mount Table w/Hutch c/w 2 Solid Wood Chairs and 2 Folding Chairs | S | - | S |
| Flexsteel Ultra Leather Super Lounge with Solid Surface Table and Love Seat | - | S | - |
| Counter Extension - Slide Out Extension w/ Solid Surface Top and Storage | S | - | - |
| Countertop - Solid Surface c/w Matching Cutting Board Sink Covers & Stainless Steel Sink | S | S | S |
| Micro/Convection Oven - Stainless Steel Finish (OTR) c/w 110v Range Hood and Light | S | S | S |
| Refrigerator - 4 Door 12 cu. Ft. c/w Ice Maker and Water in the Door - LP/Electric, Stainless Steel Finish Doors w/Ignition Lock | S | S | S |
| Countertop - Solid Surface Counter and Basin | S | S | S |
| Shower - Residential Size Curved Fiberglass Shower with Glass Doors | - | S | S |
| Sink - Stainless Sink with Deluxe Faucet in Toilet Room | S | S | S |
| Toilet - Concerto China Toilet With Sprayer | S | S | S |
| Closet - Cedar Lined Wardrobe in Bedroom | S | S | S |
| Mattress - Residential Premium Quality - 60" x 80" | S | S | S |

| 2010 EMPRESS STANDARD FEATURES (continued) | A4004Q | A4005Q | A4006Q |
|--|--------|--------|--------|
| Lighting - Halogen Lighting in Bedroom w/ Dimmer Switch | S | S | S |
| Home Theater System - 500W - 6 Channel w/Subwoofer with DVD | S | S | S |
| Stereo - AM/FM/CD/MP3 Sirius Ready Player in Dash w/Wireless Remote and Auxiliary Input (Mid Model Year) | S | S | S |
| Stereo - Separate AM/FM CD and DVD Stereo in Bedroom c/w Alarm | S | S | S |
| TV - AC 26" LCD Color Stereo TV c/w Remote in Bedroom | S | S | S |
| TV - AC 37" LCD Widescreen TV c/w Remote in Entertainment Cabinet Behind Slide Out | S | - | - |
| TV - AC 40" LCD Widescreen TV c/w Remote in Entertainment Cabinet | - | S | S |
| Air Conditioner - Dual (2) Centrally Ducted 13,500 BTU w/Heat Pumps | S | S | S |
| Furnaces - Front 35,000 BTU and Rear 25,000 BTU Central Furnaces c/w Electronic Ignition and In Floor Ducting | S | S | S |
| Heater - Dual Rear Auxiliary Automotive Heaters c/w Electric Control Valves | S | S | S |
| Battery Disconnect - Chassis Batteries | S | S | S |
| Convenience Center- Mounted Mid Ship includes, Level Monitor, Block heater, Thermostat, EMS controls, Inverter Control | S | S | S |
| Generator - 8.0 KW Onan Quiet Diesel w/ Hour Meter in Convenience Center | S | S | S |
| Inverter - 2000 Watt Inverter c/w 100 Amp Charger with Remote | S | S | S |
| Energy Command 30 - Onan Automatic Generator Control | S | S | S |
| Panel - 50 Amp Electrical Service c/w Energy Management System | S | S | S |
| Power Cord Reel - 50 Amp Power Cord Reel | S | S | S |
| Holder - Swing Out Underbody Sewer Hose Holder | S | S | S |
| Holding Tanks - Enclosed and Insulated, Dual Heated Waste Holding Tanks | S | S | S |
| Water Filter - Whole House Water Filter in Utility Module | S | S | S |
| Water Heater - 16 Gallon Equivalent Electronic Ignition Gas/Electric/Motoraid Water Heater (N/A w/ Hydronic Heating) | S | S | S |
| Water Hose Reel - Electric | S | S | S |
| Water Tank - Enclosed and Insulated, Dual Heated Fresh Water Tank | S | S | S |
| Winterization System - c/w On Board Potable Antifreeze Pick Up Tank | S | S | S |
| Central Vacuum - w/ Outlet in Baggage Compartment | S | S | S |
| Power Awning Package includes: | S | S | S |
| Front Door Awning - A&E Oasis Power w/ Remote | S | S | S |
| Weathershield Equipped A&E Elite Slide Topper - Living Room and both Bed Slides | S | S | S |
| A&E Slide Topper over Galley Slide (Weathershield not available) | S | S | S |
| Weathershield/Weatherpro Power - Acrylic w/Remote and Wind Sensor, 19 ft | S | S | S |
| Black Awning Hardware | S | S | S |
| Weathershield Equipped A&E Elite Window Awnings (Main Slide Windows & Bedroom Window) | S | S | S |
| 2010 EMPRESS OPTIONAL FEATURES | A4004Q | A4005Q | A4006Q |
| CD Changer - 10 Stack CD Changer (n/a with touch screen GPS option) | 0 | 0 | 0 |
| GPS Touch Screen Navigation c/w CD & (Sirius Sat. IPOD & Bluetooth Prewire) | 0 | 0 | 0 |
| Satellite Dish - Explorer Dish for Starchoice with Automatic Acquisition | 0 | 0 | 0 |
| Satellite Dish - Motosat High Definition (Living Area TV Only) | 0 | 0 | 0 |
| Stereo - Exterior AM/FM/CD Stereo with Shielded Speakers | 0 | 0 | 0 |
| TV - AC 20" Exterior LCD TV c/w AM/FM/DVD/CD Player | 0 | 0 | 0 |
| TV - AC 23" LCD TV in Front Overhead Cabinet | 0 | 0 | 0 |
| Cargo Slide - Mounted in Forward Baggage Bay | 0 | 0 | 0 |
| Cargo Slide - Mounted in Rear Baggage Bay | 0 | 0 | 0 |

EMPRESS OPTIONAL FEATURES

| 2010 EMPRESS OPTIONAL FEATURES (continued) | | | |
|--|---|---|---|
| Booth Dinette - With Slideout Drawers & Wall Mount Table | 0 | - | 0 |
| Chairs - Two Additional Fixed Chairs | 0 | 0 | 0 |
| Dishwasher | 0 | 0 | 0 |
| Oven - 21" LP Gas Oven (n/a with dishwasher option) | 0 | 0 | 0 |
| Shower - Neo Angle Fiberglass Enclosed Shower | 0 | - | - |
| Cabinetry - Glazed Harvest Cherry | 0 | 0 | 0 |
| Cabinetry - Washington Cherry | 0 | 0 | 0 |
| Factory PDI | 0 | 0 | 0 |
| Freezer / Refrigerator - AC/DC 1.38 Cu. Ft. On Slideout Tray | 0 | 0 | 0 |
| Washer / Dryer - Vented | 0 | 0 | 0 |

INVITATION STANDARD FEATURES

| 2010 INVITATION STANDARD FEATURES | A391Q | A393T |
|---|-------|-------|
| Chassis – Freightliner XC c/w Cummins ISC 360 HP / 1050 Ft Lbs Turbo Diesel Raised Rail Rear Radiator w/Exhaust Brake | S | S |
| Chassis – Freightliner XC c/w Cummins ISL 425 HP / 1200 Ft Lbs Torque Turbo Diesel Raised Rail Rear Radiator w/2 Stage Engine Brake | 0 | 0 |
| Hitch - Trailer Hitch Receiver w/wiring and plug - 1000 lb/10,000 Lb | S | S |
| Clutched Radiator Fan | S | S |
| Tires - Radial – 255/70R22.5 | S | S |
| Transmission - Allison 3000 MH 6 Speed Automatic c/w Lock Up & Transmission Cooler | S | S |
| Cameras - Side Turn Cameras | 0 | 0 |
| Dash Air and Heat - Dual Blower with Dual Zone Control (Independent Driver & Passenger Controls) | S | S |
| Rearview Camera/Monitor – Color LCD Display Mounted in Dash | S | S |
| Seat - Ultra Leather Driver Captain's Chair w/3 Point Seat Belt and 6 Way Power | S | S |
| Seat - Ultra Leather Passenger Captain's Chair w/Manual Foot Rest | S | S |
| Cover - Hydraulic Powered Front Step Cover w/Driver and Passenger Controls | S | S |
| Jacks - HWH "One Touch" Automatic Leveling System c/w Manual Air Dump | S | S |
| Undercoating - Automotive Type | S | S |
| Rust Protection | S | S |
| Roof - Domed Kemlite FRP Flexroof | S | S |
| Vacuum Bonded Aluminum Framed Insulated Sidewall, Roof & Floor Construction | S | S |
| Baggage Doors - Side Swing under Galley Slide c/w Gas Struts and Slam Latch | S | S |
| Paint - Full Body Exterior Paint with Clear Coat | S | S |
| Windshield - One Piece | S | S |
| 84" Interior Ceiling Height | S | S |
| Solid Cherry Cabinetry | S | S |
| Flooring - Porcelain Tile | S | S |
| Keylock Safe Box | S | S |
| Lighting - Halogen Lighting in Living Area | S | S |
| Electric Bedroom Slides c/w Electric Locks | S | S |
| Hydraulic Slides in Living/Galley Area c/w Locks | S | S |
| Hide a Bed - Cloth Hide-A-Bed on Driver Side w/Air Coil Mattress | S | S |
| Easy Bed - Ultra Leather on Passenger Side | S | - |
| Recliner - Ultra Leather Recliner with Solid Oak Flip Table | - | S |
| Table - Solid Wood Extendable Cantilevered Wall Mount Table w/Hutch c/w 2 Solid Wood Chairs and 2 Folding Chairs | S | - |

| | A391Q | A393T |
|--|-------|-------|
| 2010 INVITATION STANDARD FEATURES (continued) | | |
| Table - Solid Wood Round Table with Drop Leaves - 2 Fixed and 2 Folding Chairs | - | S |
| Bi-fold Solid Surface Range Cover | S | S |
| Micro/Convection Oven - Stainless Steel Finish (OTR) c/w 110v Range Hood and Light | S | S |
| Countertop - Solid Surface Counter in Galley with Stainless Steel Undermount Sink | S | S |
| Refrigerator - 4 Door 12 cu ft c/w Ice Maker and Water in the Door - LP/Electric, Stainless Steel Finish Doors w/Ignition Lock | S | S |
| Corian Vanity Countertop with Undermount Solid Surface Sink | S | S |
| Shower - Fiberglass Enclosed Neo Angle Shower - with Glass Enclosure | S | S |
| Toilet - Sealand 510, China, Foot Flush with Sprayer | S | S |
| Mattress - Residential Quality Queen (60" x 80") | S | S |
| Stereo - AM/FM CD and DVD Stereo in Bedroom with Alarm Clock | S | S |
| Stereo - Home Theater System, 5 Channel Stereo with Subwoofer | S | S |
| TV - AC 26" LCD Color Stereo TV c/w Remote in Bedroom | S | S |
| TV - AC 32" Flat Screen LCD TV c/w Remote in Overhead Cabinet | S | S |
| A/C - Dual (2) Centrally Ducted 13,500 BTU w Heat Strip and Remote Return Air | S | S |
| Furnace - Dual Forced Air Furnaces (35K BTU Rear, 25K BTU Front) | S | S |
| Heater - Dual Rear Auxiliary Automotive Heaters c/w Electric Control Valves | S | S |
| Generator - 8.0 KW Onan Quiet Diesel on Slide Out Tray w/Hour Meter | S | S |
| Inverter - 2000 Watt Inverter c/w 100 Amp Charger | S | S |
| Panel - 50 Amp Electrical Service c/w Energy Management System | S | S |
| Switch - Electronic Battery Disconnect (Coach Batteries) Above Entrance Door | S | S |
| Holding Tanks - Enclosed and Insulated, Dual Heated Waste Holding Tanks | S | S |
| Water Filter - Whole House Water Filter in Utility Module | S | S |
| Water Heater - Electronic Ignition LP/Electric/ Motoraid Water Heater (10 gal) | S | S |
| Swing Out Underbody Sewer Hose Holder | S | S |
| Central Vacuum with Outlet in Baggage Compartment | S | S |
| Power Awning Package includes: | S | S |
| Front Door Awning - A&E Oasis Power w/Remote | S | S |
| Weathershield Equipped A&E Elite Slide Toppers (Number of awnings - 3) | S | S |
| Weathershield/Weatherpro Power - Acrylic w/Remote and Wind Sensor, 19 ft | S | S |

INVITATION OPTIONAL FEATURES

| | A391Q | A393T |
|---|-------|-------|
| 2010 INVITATION OPTIONAL FEATURES | | |
| Cameras - Side Turn Cameras | 0 | 0 |
| Compass / Thermometer - Dash Mount with Exterior Temperature Readout | 0 | 0 |
| Air Conditioner - Dual Ducted 13,500 BTU with Heat Pump | 0 | 0 |
| CD Changer - 10 Stack CD Changer | 0 | 0 |
| GPS Touch Screen Navigation System c/w CD & Sirius Sat. Radio Prewire & Antenna | 0 | 0 |
| Satellite Dish - Explorer Dish for Starchoice with Automatic Acquisition | 0 | 0 |
| Satellite Dish - Motosat 18" Executive with DVB Automatic Acquisition | 0 | 0 |
| Satellite Dish - Motosat High Definition (Living Area Only) | - | 0 |
| Satellite Dish - Winegard with Electronic Elevation Sensor | 0 | 0 |
| Satellite Radio Prewire - Including Antenna | 0 | 0 |
| Stereo - Exterior AM/FM/CD Stereo with Shielded Speakers | 0 | 0 |
| Awning - A&E Elite Window Awnings with WeatherShield (main slides & bedroom) | 0 | 0 |
| Cargo Slide - Mounted in Forward Baggage Bay | 0 | 0 |
| Cargo Slide - Mounted in Rear Baggage Bay | 0 | 0 |
| Diamondshield Paint Protection Film on Front Mask | 0 | 0 |
| Booth Dinette - With Slideout Drawers & Wall Mount Table | 0 | - |

| | A391Q | A393T |
|---|-------|-------|
| 2010 INVITATION OPTIONAL FEATURES (continued) | | |
| Cabinet - Refreshment Centre | - | 0 |
| Chairs - Two Additional Fixed Chairs | 0 | 0 |
| Hide-A-Bed - Ultra Leather on Driver Side c/w Air Coil Mattress | 0 | 0 |
| Mattress Upgrade | 0 | 0 |
| Oven - 21" Glass Door Oven ILO Drawers Under Cooktop | 0 | 0 |
| Cabinetry - Harvest Cherry | 0 | 0 |

SIGNATURE STANDARD FEATURES

| | A371Q |
|---|-------|
| 2010 SIGNATURE STANDARD FEATURES | |
| Chassis - Freightliner XC - Cummins 6.7L ISB 340 HP/660 Ft Lbs Turbo Diesel Raised Rail Rear Radiator w/Exhaust Brake | S |
| Hitch - Trailer Hitch Receiver w/Wiring and Plug - 1000 lb/10,000 lb | S |
| Tires- Radial - 255/80R22.5 w/Wheel Simulators | S |
| Transmission - Allison 2500MH Series 6 Speed Automatic c/w Lock Up & Transmission Cooler | S |
| Cameras - Side Turn Cameras | S |
| Dash Air & Heat - Dual Blower w/ Dual Zone Control (Independent Driver & Passenger Controls) | S |
| Rearview Camera w/Monitor Mounted in Dash | S |
| Seat - Faux Leather Swivel Driver Captain Chair - 6Way Power w/Infinity Adjustable Arms | S |
| Seat - Faux Leather Swivel Passenger w/Manual Foot Rest w/infinity Adjustable Arms | S |
| Cover - Hydraulic Powered Front Step Cover w/Driver and Passenger Controls | S |
| Jacks - HWH "One Touch" Automatic Leveling System w/Dash Mounted Air Dump Switch | S |
| Baggage Doors - Side Swing Aluminum c/w Gas Struts & Slam Latches Under Curbside Slideout | S |
| Roof - Domed Kemlite FRP Flexroof | S |
| Vacuum Bonded Aluminum Framed Insulated Roof and Sidewall Construction w/ thermal break | S |
| Windows - Tinted Radius Corner Thermal Pane Windows | S |
| Windshield - One Piece | S |
| 84" Interior Ceiling Height w/Padded Vinyl Headliner | S |
| Solid Cherry Wood Cabinet doors | S |
| Drawers - Full Extension Ball Bearing Drawer Tracks w/Snap Latches | S |
| Flooring - Tile Look High Pressure Laminate Flooring in Galley and Bath as per floor plan | S |
| Electric Bed Slide Out on Driver side, Dresser & Drawers on Passenger side | S |
| Flush Floor Hydraulic Slide Out System in Living Area, Hydraulic Galley Slide on Passenger side | S |
| Hide A Bed - Faux Leather on the Driver Side w/Air Coil Mattress | S |
| Love Seat - Faux Leather on Passenger Side | S |
| Table - Solid Wood Extendable Cantilevered Wall Mount Table w/Hutch c/w 2 Solid Wood Chairs and 2 Folding Chairs | S |
| Cook Top - Recessed c/w High Output Burner & Solid Surface Recessed Bi-fold Range Cover | S |
| Countertop - Solid Surface c/w Matching Cutting Board Sink Covers & Stainless Steel Sink | S |
| Micro/Convection Oven - Stainless Steel Finish (OTR) c/w 110v Range Hood and Light | S |
| Refrigerator - Dometic LP/Electric 9 Cu Ft w/Temp Control w/Cherry Finished Framed Raised Panel Inserts | S |
| Countertop - Solid Surface Counter and Basin | S |
| Shower - Fiberglass Enclosed Shower w/ Glass Shower Door | S |
| Skylight - Residential Dual Pane in Shower Compartment | S |
| Stereo - AM/FM/CD/MP3 Sirius Ready Player in Dash w/Wireless Remote and Auxiliary Input | S |
| Stereo - Home Theater System - 5 Channel Stereo with Subwoofer | S |
| TV - AC 26" LCD Color Stereo TV c/w Remote in Bedroom | S |
| TV - AC 32" LCD Widescreen TV c/w Remote in Front Overhead Cabinet | S |

| | A371Q |
|---|-------|
| 2010 SIGNATURE STANDARD FEATURES (continued) | |
| Air Conditioner - Dual (2) Centrally Ducted 13,500 BTU w Heat Strip and Remote Return Air | S |
| Drawers - Full Extension Ball Bearing Drawer Tracks w/Snap Latches | S |
| Fan - Fantastic Non Reversible Thermostatically Controlled In Lavatory w/Wall Switch | S |
| Fan - Fantastic Non Reversible Thermostatically Controlled In Toilet Room w/Wall Switch | S |
| Fan - Reversible Thermostatically Controlled Fantastic Fan in Bedroom w/Wall Switch | S |
| Furnace - Dual Forced Air Furnaces (35K BTU Rear, 25K BTU Front) | S |
| Bi Directional Isolator Relay Delay (BIRD) Battery Charging System | S |
| Generator - 8.0 KW Onan Quiet Diesel w/Hour Meter in Convenience Center | S |
| Panel - 50 Amp Electrical Service c/w Energy Management System | S |
| Inverter - 600 Watt (For Front TV, Bedroom TV, Home Theater, Sat Receiver) | S |
| Black Tank Flush w/Atmospheric Break | S |
| Holding Tanks - Enclosed and Insulated, Dual Heated Waste Holding Tanks | S |
| Water Filter - Whole House Water Filter in Utility Module | S |
| Water Heater - 10 Gallon Electronic Ignition Gas/Electric/Motoraid Water Heater | S |
| Manual Awning Package includes: | S |
| Front Door Awning - A&E Oasis Manual | S |
| Weathershield Equipped A&E Elite Slide Toppers (Number of Awnings - 3) | S |
| Weathershield Equipped 2 Step Patio Awning - Acrylic - 19' | S |
| Black Awning Hardware | S |

SIGNATURE OPTIONAL FEATURES

| | A371Q |
|--|-------|
| 2010 SIGNATURE OPTIONAL FEATURES | |
| Cameras - Side Turn Cameras | 0 |
| Driver & Passenger Side Roller Blinds | 0 |
| Hydraulic Powered Front Step Cover | 0 |
| Power Driver/Passenger Sun Visors | 0 |
| 2000 Watt Inverter c/w 100 Amp Battery Charger And 2 Additional 6 Volt Batteries | 0 |
| CB Antenna | 0 |
| GPS Touch Screen Navigation System c/w CD & Sirius Sat. Radio Prewire & Antenna | 0 |
| Satellite Dish - Explorer Dish for Starchoice with Automatic Acquisition | 0 |
| Satellite Dish - Motosat 18" Executive with DVB Automatic Acquisition | 0 |
| Satellite Dish - Winegard with Electronic Elevation Sensor | 0 |
| Satellite Radio Prewire - Including Antenna | 0 |
| Awning - Weathershield Equipped A&E Elite Window Awnings | 0 |
| Awning Upgrade - Power Awning Upgrade | 0 |
| Cargo Slide - Mounted in Forward Baggage Bay | 0 |
| Cargo Slide - Mounted in Rear Baggage Bay | 0 |
| Diamondshield Paint Protection Film on Front Mask | 0 |
| Booth Dinette - With Slideout Drawers & Wall Mount Table | 0 |
| Mattress Upgrade | 0 |
| Oven - 21" LP Gas | 0 |
| Refrigerator - 4 Door 12 Cu. Ft. - LP/Elec c/w Ice Maker & Ignition Lock | 0 |
| Covers - Insulated Vent Covers | 0 |
| Flooring - Ceramic Tile ILO Tile Look High Pressure Laminate Flooring | 0 |

A4005Q



A393T



A371Q



Specifications

| | <i>SIGNATURE A371Q</i> | <i>INVITATION A391Q</i> | <i>INVITATION A393T</i> | <i>EMPRESS A4004Q ELITE</i> | <i>EMPRESS A4005Q ELITE</i> | <i>EMPRESS A4006Q ELITE</i> |
|----------------------------------|----------------------------|-----------------------------|-----------------------------|---------------------------------|---------------------------------|---------------------------------|
| GVWR - lbs (kg) | 30020 (13616) | 31000 (14061) | 31000 (14061) | 34320 (15567) | 34320 (15567) | 34320 (15567) |
| UVW - lbs (kg) | 24010 (10890) | 25099 (11385) | 23426 (10625) | 28133 (12761) | 29057 (13180) | 29057 (13180) |
| NCC - lbs (kg) | 6010 (2726) | 5901 (2676) | 7574 (3435) | 6187 (2806) | 5263 (2387) | 5263 (2387) |
| Wheelbase - in (mm) | 228" (5791) | 252" (6401) | 252" (6401) | 266" (6756) | 266" (6756) | 266" (6756) |
| Length - ft (mm) | 37' 6" (11430) | 39' 4" (11989) | 39' 4" (11989) | 40' 2" (12243) | 40' 2" (12243) | 40' 2" (12243) |
| Width - ft (mm) | 8' 4" (2534) | 8' 4" (2534) | 8' 4" (2534) | 8' 4" (2534) | 8' 4" (2534) | 8' 4" (2534) |
| Height Incl A/C - ft (mm) | 12' 4" (3759) | 12' 7" (3835) | 12' 7" (3835) | 12' 7" (3835) | 12' 7" (3835) | 12' 7" (3835) |
| *Fresh Water Cap - gal (l) | 102 (386) | 102 (386) | 102 (386) | 102 (386) | 102 (386) | 102 (386) |
| Black Holding Tank Cap - gal (l) | 57 (216) | 57 (216) | 57 (216) | 57 (216) | 57 (216) | 57 (216) |
| Grey Holding Tank Cap - gal (l) | 57 (216) | 57 (216) | 57 (216) | 57 (216) | 57 (216) | 57 (216) |
| Fuel Cap - gal (l) | 100 (379) | 100 (379) | 100 (379) | 100 (379) | 100 (379) | 100 (379) |
| Propane Cap - gal (l) | 32 (121) | 32 (121) | 32 (121) | 32 (121) | 32 (121) | 32 (121) |

*Includes 10 gal. Water Heater
All Capacities in U.S. Gallons

GVWR (GROSS VEHICLE WEIGHT RATING)

The maximum permissible weight of this motorhome. The GVWR is equal to or greater than the sum of the unloaded vehicle weight (UVW) plus the net carrying capacity (NCC).

UVW (UNLOADED VEHICLE WEIGHT)

The weight of the motorhome as built at the factory. The UVW does not include cargo, fresh water, LP gas, factory or dealer installed accessories.

NCC (NET CARRYING CAPACITY)

The maximum weight of personal belongings, food, fresh water, LP gas, tools, tongue weight of towed vehicle, factory and dealer installed accessories, etc., that can be carried by this motorhome. (NCC is equal to or less than GVWR minus UVW.) Please see your dealer for weights of factory installed options.

Triple E Recreational Vehicles P.O. Box 1230, Winkler, Manitoba, Canada R6W 4C4 Telephone: (204) 325-4361 Fax: (204) 325-5241

Triple E Recreational Vehicles are designed and built to meet or surpass CSA-RVIA standards covering electrical services, gas services, plumbing services and vehicular safety. Empress, Invitation, and Signature motorhomes exceed 96" in width. In some states, 96" is the maximum width of vehicles travelling some or all state roads. It is the responsibility of the owner to be familiar with the road usage laws of the states in which you travel. Product improvement is a continuing process at Triple E Recreational Vehicles. We reserve the right to change specifications on any or all products without prior notice; errors and omissions excepted. Triple E Recreational Vehicles is under no obligation to undertake modification to units manufactured prior to changes on specifications. Brochure pictures may be shown with optional equipment. Colours may not be exactly as shown due to the printing process. Please see your dealer for specific colours. Printed in Canada. 10/09.



www.tripleerv.com

