

REGENCY GT



ENJOY THE JOURNEY.



Enjoy the convenience of a closet at the front door, ideal for jackets, umbrellas, and whatever else you might need to grab on your way out.



The Regency GT boasts all-new frameless, tinted European windows for a sleek, streamlined look.

ADVENTURE AWAITS

If its freedom you're looking for, you'll find it in the Regency GT! Built on a deluxe Ford chassis with many amenities and complete with an E-450 V-10 Triton engine, this model has all the power needed to whisk you to your dream destinations while the spacious interior and distinctive furnishings will assure you arrive in style. Created with excellent maneuverability, the GT will have you feeling equally at home on the highway, at the campsite, or just taking a quick trip into town for supplies. We just know you're going to love it!



Slate Exterior Colour (GT28D Shown Above)



Black Currant Exterior Colour (GT29T Shown Above)



The road trip never looked so good! Enjoy the spacious comfort and sleek design of the GT29T, complete with 68" sofa bed and 26" LED TV, all complemented by beautiful cherry wood cabinetry. You'll be the envy of all your traveling friends! (All photos are of the Regency GT29T.)



Beauty and function coalesce in the galley's curved cherry cabinetry and contoured countertop with wood edge to ensure a seamless flow and maximum space for food prep.



You'll be amazed at the spacious living area! The GT29T (shown here) features a comfortable booth dinette and easy bed, both of which are upholstered in supple faux leather and convert to extra sleeping space for guests. Relax and enjoy!

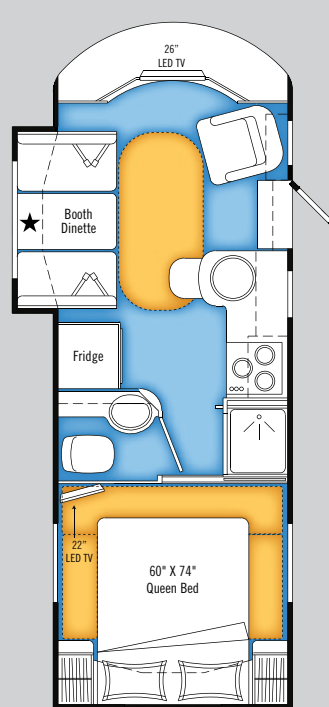


Across from the 60" x 74" bed, both the GT28D & GT29T offer his & hers wardrobes, large full-extension drawers, and a built in laundry hamper.

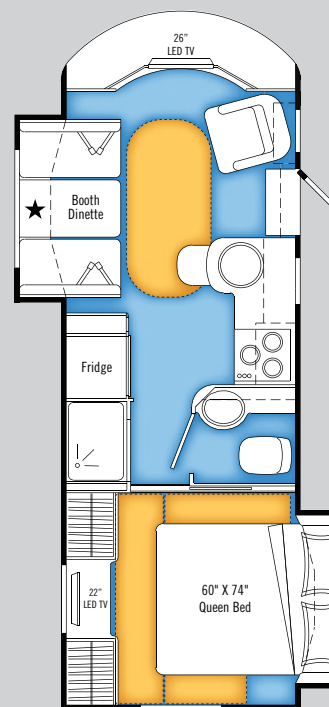
FLOORPLANS

Linoleum

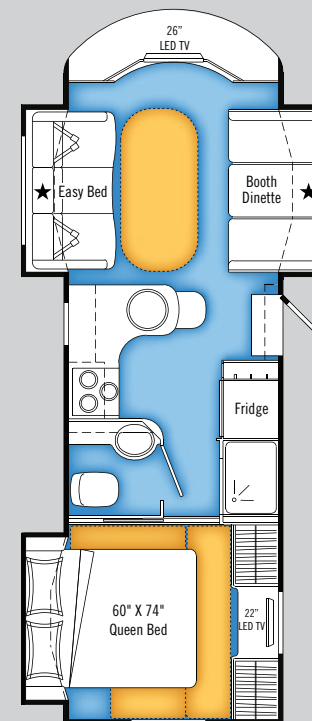
Optional Throw Rug



GT27S

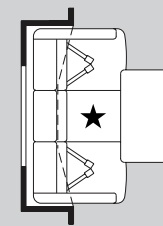


GT28D

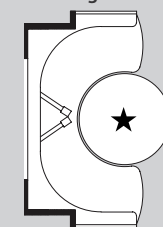


GT29T

Optional
Flex-O-Bed



Optional
U-Lounge



* See Standards & Options
on Reverse for Slide-Out
Configurations

STANDARD AND OPTIONAL EQUIPMENT

Specifications	GT27S	GT28D	GT29T
GVWR - lbs. (kg)	14500 (6579)	14500 (6579)	14500 (6579)
UVW - lbs. (kg)	11371 (5159)	11842 (5373)	12278 (5571)
NCC - lbs. (kg)	3129 (1420)	2658 (1206)	2222 (1008)
Wheelbase - in. (mm)	185" (4699)	190" (4826)	218" (5537)
Length Not Incl. Spare - ft. (mm)	28'3" (8610)	28'8" (8737)	30'11" (9423)
Width - ft. (mm)	7'11" (2420)	7'11" (2420)	7'11" (2420)
Height Inc. A/C - ft. (mm)	10'6.5" (3213)	10'6.5" (3213)	10'6.5" (3213)
**Fresh Water Cap. - Gal. (L)	36 (137)	36 (137)	36 (137)
Black Holding Tank Cap. - Gal. (L)	32 (122)	32 (122)	32 (122)
Grey Holding Tank Cap. - Gal. (L)	32 (122)	32 (122)	32 (122)
Fuel Cap. - Gal. (L)	55 (209)	55 (209)	55 (209)
Propane Cap. - Gal. (L)	17.5 (66)	17.5 (66)	17.5 (66)
Exterior Storage Capacity	21 CU. FT.	43 CU. FT.	52 CU. FT.

*All Capacities in U.S. Gallons ** Includes 6 gal. Water Heater

Chassis and Suspension	GT27S	GT28D	GT29T
Chassis - Ford 14,500 GVWR, E-450, 6.8L EFI V-10 Triton w/ Gas Generator Ready	S	S	S
Transmission - Automatic 5 Speed c/w Overdrive and Tow Haul Mode	S	S	S
Rear Hitch Receiver w/wiring - 500/5000 Lb (Brake/Turn/Tail Lights)	S	S	S
Tires - Radial Ply w/ Wheel Simulators	S	S	S
Rear Airbag Assist Suspension	S	S	S
Air Compressor w/ Individual Gauges (Wireless)	O	O	O

Drivers Area Conveniences

Air Conditioning - Chassis	S	S	S
Cruise Control and Tilt Steering Wheel	S	S	S
Ultraleather Driver and Passenger Captain's Chairs	S	S	S
Mirrors - Heated Remote Mirrors	S	S	S
Power Windows and Door Locks	S	S	S
Power Driver's Seat	S	S	S
Wood Grain Dash Trim	S	S	S
Radio - In Dash AM/FM/CD/DVD/NAV/Bluetooth & Rear View Camera	S	S	S
Satellite Radio - Prewire Including Satellite Antenna and Interface Modules	S	S	S

Vehicular

Undercoating - Chassis	S	S	S
Leveling Jacks - HWH Auto (N/A with Flex-O-Bed)	O	O	O
Rust Protection	O	O	O

Construction

Floor - Steel Framed Vacuum Bonded Insulated Construction	S	S	S
Sidewalls - Vacuum Bonded Aluminum Framed Insulated with Thermal Break Gel Coat Fiberglass	S	S	S
Windows - Frameless Thermal Tinted All Glass Awning Style	S	S	S
Roof - Domed Vacuum Bonded Aluminum Framed Insulated Kemplite FRP Flexroof	S	S	S

Exterior	GT27S	GT28D	GT29T
Doors - Flush Radiused Style Baggage Doors	S	S	S
Assist Handle - Monogrammed	S	S	S
Light - Scare Light w/ Interior Wall Switch	S	S	S
Running Boards and Flares - Fiberglass	S	S	S
Storage - Pass Through Compartment at Rear	S	-	-
Ladder	S	S	S
Paint - Full Body w/ Clear Coat	S	S	S

Interior

Cabinets - Cherry Finished Construction with Raised Solid Doors and Cabinet Ends	S	S	S
Ceiling - Flat Padded Vinyl Headliner	S	S	S
Detectors - Electronic Smoke, LP and CO	S	S	S
Privacy Drape - Cab	S	S	S
Drawers - Full Extension Ball Bearing Tracks	S	S	S
Fire Extinguisher - Dry Chemical	S	S	S
Flooring - Serged Carpet Package for Bedroom and Living Area	O	O	O
Flooring - Easy Clean Vinyl Throughout	S	S	S
Shades - Pleated Day/Night	S	S	S
Skylight - Living Area	S	S	S
Lighting - Fluorescent and Halogen Accent	S	S	S
Bedspread - Decorative with Toss Cushions	S	S	S

Furniture

Booth Dinette w/ 5" Cushions w/ Easy Lift Table	S	S	S
Chair - Euro Recliner w/ Ottoman	S	S	-
Pillows - Coordinated For Living Area	S	S	S
Sofa - Easy Bed - Faux Leather	-	-	S
Sofa - Easy Bed - Faux Leather ILO Booth Dinette	O	O	-
U-Lounge Dinette ILO Booth Dinette (N/A with Flex-O-Bed in GT29T)	O	O	O
Sofa - Flex-O-Bed - Faux Leather (N/A with Jacks on GT29T)	O	O	O
Mattress - Innerspring 60" x 74"	S	S	S

Galley

Countertop - Contoured with Wood Bevel & Laminate Edge	S	S	S
Large Round Stainless Steel Deep Bowl	S	S	S
Brushed Nickel Galley Faucet w/ Pull out Sprayer	S	S	S
Venetian Blind in Galley	S	S	S
Combination 3 Burner Glass Cooktop & Convection Microwave	S	S	S
Range Hood	S	S	S
Refrigerator - Dometic Double Door LP/Electric 7 Cu. Ft. w/ Raised Panel Inserts	S	S	S
Garbage Can - Recessed in Counter Top w/ Flush Lid	S	S	S

Lavatory

Skylight - in Shower	S	S	S
Toilet - China - Foot Flush w/ Sprayer	S	S	S
Shower - c/w Glass Door	S	S	S

Entertainment	GT27S	GT28D	GT29T
TV - LCD With Remote In Bedroom	S	S	S
Entertainment Console - Over Cab with 26" LED TV	S	S	S
Satellite Dish - Winegard w/ Elec. Elevation Sensor	O	O	O
Satellite Dish - Pre-Wire	S	S	S
TV Antenna - Roof Top Retractable Antenna c/w Booster	S	S	S
Stereo - AM/FM/DVD/CD/Tuner Home Theater	S	S	S

Heating, Ventilating & A/C

Air Conditioner - Low Profile 13,500 BTU Ducted c/w Heat Pump	S	S	S
Fans - Non Reversible Thermal Controlled in Bedroom & Living Area or Galley	S	S	S
Furnace - 35,000 BTU Furnace	S	S	S
Vent - 12 Volt Power Roof Exhaust in Lavatory	S	S	S

Electrical

Bi-Directional Isolator Relay Delay Batt. Charging	S	S	S
Cable TV Hook-up	S	S	S
Power Converter c/w Battery Charger (45 Amp)	S	S	S
Generator - 4.0 KW Onan MicroQuiet® w/ Auto Changeover Switch	S	S	S
GFI Receptacle - 110 V - Patio, Galley, Lavatory	S	S	S
Switch - 12 Volt Battery Disconnect - Manual	S	S	S
Tray - Slide Out Battery Tray	S	S	S
Battery - Second RV Coach (1 Standard)	O	O	O
Inverter - 600 watt for Entertainment (Requires Second Battery Option)	O	O	O

Plumbing and LP Systems

Black Tank Flush	S	S	S
Monitor Panel - Grey, Black, Fresh Water & Battery	S	S	S
Pick Up Kit - Antifreeze Pick Up Kit	S	S	S
Valve - Water Heater By-Pass Valve	S	S	S
Water Heater - Elec. Ignition LP/Electric/Motoraid	S	S	S
Exterior Shower w/ Shut Off Valves for Winterizing	S	S	S
Macerator - RV Sanicon System	O	O	O

Awning Packages

Patio Awning - A&E 9000 w/ Alum. Weather Shield	S	S	S
Slide Topper Awning - 1	O	-	-
Slide Topper Awnings - 2	-	O	-
Slide Topper Awnings - 3	-	-	O

Factory PDI	O	O	O
-------------	---	---	---

WWW.TRIPLEERV.COM



Triple E Recreational Vehicles 301 Roblin Boulevard, Winkler, MB, Canada R6W 4C4 Telephone: 204-325-4361 Fax: 204-325-5241

*Product improvement is a continuing process at Triple E RV. Thus we reserve the right to change the specifications on any and all products without prior notice; errors and omissions excepted. Triple E RV is under no obligation to undertake modifications to units manufactured prior to changes in specifications. Units shown with optional equipment. Brochure printed in Canada. 09/2010.