



LA PALMA 2001



Specifications

for the 2001 La Palma

Body Construction

Alumaframe Superstructure w/Five Year Warranty
Aluminum Roof
Steel Cage Cockpit Construction
Fiberglass Insulation in Roof & Walls
Gelcoat Walls
Interior Paneling w/3/4" Bead Foam Insulation
Ozite Ceiling
Steel Framed Floor on Steel Trusses
1 1/2" Steel Tube w/Laminated 5/8" Structurewood
Flooring
Structure Foam Insulated Underbelly w/Luan Backer
One-Piece Polyethylene Storage Compartments
w/Pass Through Storage
Exterior Storage Compartment Doors w/Integrated
Single Handle Latches
Roof Ladder
Exterior Assist Handle
Fiberglass Front & Rear Cap w/Integrated Bumper
Large Curved Aerodynamic Windshield
Large Single Headlamp w/Turn Signal
Underhood Utility Light
Mud Flaps
Radius Entry Door w/Deadbolt Latch
5000 lb Hitch Receiver w/Skid Bar & 6-Point
Connector
Spare Tire in Basement (N/A 36D)
One Piece Engine Access Door
Undercoating
Auxiliary Start Circuit
Stainless Steel Wheel Covers

Options

Stainless Steel Wheel Simulators
4-Point Hydraulic Jacks

Cockpit Features

CD Player/Radio w/Four Speakers
Pilot & Co-Pilot Fabric Recliner Seats
Windshield Wipers w/Intermittent Wiper Control
Fiberglass Automotive Dash-Soft Touch
Multi Position Sunvisors
Power Steering
Cruise Control
Engine Cover
Tilt Steering Wheel
Electric Automotive Horn
Floor Mats
Power Heated Remote Mirrors
Rear Vision System Prep

Options

Leather Faced Pilot/Co-Pilot Six-Way Power Seats
Six Way Power Pilot Seat

Six Way Power Co-Pilot Seat
Driver's Door
CB Prep
Dash Workstation
Rear Vision System

Appliances and Accessories

8 cu. ft. 2-Way Refrigerator
High Output 3-Burner Range/17" Oven (opt in 32 PBD)
Space Saver Microwave
Systems Monitor Panel
Cable TV Hook-Up & Telephone Jacks
TV Antenna & Booster w/12V Recept & TV Jacks
19" Color TV w/Remote Control in Living Area

Options

Convection Microwave
8 cu.ft. 2-Way Refrigerator w/Icemaker
Satellite Dish Prep
High Output 3-Burner Cooktop Range W/O Oven (std
in 32 PBD)
4-Door Refrigerator w/Icemaker (N/A 32S, 32PBD, 34S,
34F)
13" Color TV w/Remote Control in Bedroom
VCR w/Video Switching Box
Washer/Dryer Prep w/10 Gallon Water Heater (32PBD
& 34 PBD Only, Requires 50 Amp Service)
Combination Washer/Dryer (32PBD & 34PBD Only,
Requires Washer/Dryer Prep)
AM/FM Stereo Cassette (deletes CD)

Interiors

Western Oak Cabinets
Hardwood Cabinet Ends
Adjustable Shelves in Kitchen Pantry
Wallpaper Border in Bedroom & Bath
Raised Panel Hardwood Doors
Low Friction Roller Drawer Guides
Marble-Like Kitchen & Bathroom Countertops
Medicine Cabinet
Wood Drink Tray on Co-Pilot Side
Bedspread w/Pillows
Towel Bar in Bathroom
Easy Bed Sleeper Sofa (N/A 32 PBD, 34 SBS, 34 SBD)
Headboard w/Bed to Rear
Pocket Doors
Rotocast Booth Dinette w/Storage Drawers
Overhead Cabinets in Slide-Out Above Sofa (N/A
32PBD, 34SBS, 34SBD, 36SAD)
Hide-A-Bed Sofa (32PBD, 34SBS, 34SBD Only)
Nylon Carpeting & Pad in Living Area, Hallway &
Bedroom
Mirror at Galley Backsplash
Brass Finished Cabinet Hardware

Day/Night Pleated Shades in Living Room & Bedroom
Window Lambrequins
Sink Cutting Board
Fabric Barrel Chair
One-Piece Fiberglass Tub/Shower
Vinyl Floor in Bathroom
Wilsonart Flooring in Kitchen (36D Only)
Ceramic Tile Floor in Kitchen (32S, 34S, 34F, 34SBS, 34SBD, 36G Only)

Options

Decors: Holly Berry, Smoky Mountains, Peacock Colony Oak or Walnut Cabinets
Dinette Table w/Two Free Standing Chairs & two Folding Chairs
Fabric Recliner
Raised Panel Insert on Refrigerator Door
Leather Faced Recliner
Leather Faced Magic Bed (N/A 32PBD, 34SBS, 34SBD, 36SAD)
Fabric Magic Bed (N/A 32PBD, 34SBS, 34SBD, 36SAD)
Twin Beds (Only 34S & 36G)
Queen Island Bed Head to Rear (34F, 36G Only)

Electrical Systems and Lights

55 Amp Electronic 12V Power Converter
30 Amp 120V Distribution Panel & Cord
Two 6V Deep Cycle Batteries
110 Volt Outlet Over Dinette Table
Battery Disconnect Switches Inside Stepwell
Porch Light
Patio Receptacle
Lights in Outside Storage Compartments
12V Incandescent Lights in Ceiling
Cosmetic Light in Bathroom
Automatic Light in Wardrobe
Power Entry Step w/Light
5.0kw Generator
18" Fluorescent Ceiling w/Dual Bulb (Living Area Only)
Water Pump Switch
VCR Prep

Options

5.5kw Generator
1500 Watt Inverter w/Two Additional Batteries
Energy Management System w/50 Amp Service
50 Amp Service

Heating, Vents and Air Conditioning

Electronic Ignition Furnace (31M BTU in 32S/35M BTU in all others)
One 13,500 BTU w/Ducted Air & Wall Thermostat (N/A 36SAD, 36D, 36G)
Wet Bay w/12V Heater
In Floor Ducted Heating System
Dash Heating & Air Conditioning System

w/Defroster
12V Roof Vent in Bathroom

Options

Two 13,500 BTU w/Ducted Air & Wall Thermostat (36D & 36G Only)
Cold Weather Package
12V Attic Fan

Plumbing and LP Systems

Demand Water System & Water Pump
6 Gallon LP Gas/Electric Water Heater w/Electronic Ignition
Water Heater By-Pass Valve
Gravity or Pressurized Water Fill
Glass Shower Door w/Brass Frame
Porcelain Toilet w/Sprayer
Insulated Utility Bay

Options

Water Purifier in Kitchen
Neo Angled Bath Tub (N/A 34F, 34SBS, 34SBD, 36G)
10 Gallon Gas/Electric Water Heater w/Electronic Ignition (N/A 34F)

Windows, Doors and Awnings

Tinted Dual Pane Sliding Windows Throughout
Radius Entry Door w/Clear Glass, Roller Shade, Screen Door & Anti-Skid Steps
Slide-Out Room Awning
Awning Rail
Tinted Skylight in Bathroom

Options

Automatic Patio Awning
Window Awnings (One on Double Slide-Outs)
Acrylic Patio Awning w/Brushed Aluminum Arms

Safety Features

Fire Extinguisher 10:BC
Deadbolt Lock on Entrance Door
120V GFI Protected Circuit
LP Gas Detector
Smoke Detector
Carbon Monoxide Detector
Driver & Passenger Three Point Seat Belts
Third Brake Safety Light
Egress Window(s)

Due to product improvements, changes during the model year and/or transcription errors that may occur, information represented within this brochure may not be accurate at the time of your purchase. If certain information is significant to your purchasing decision, please confirm the information with your dealer prior to submitting your order.

Color Choices

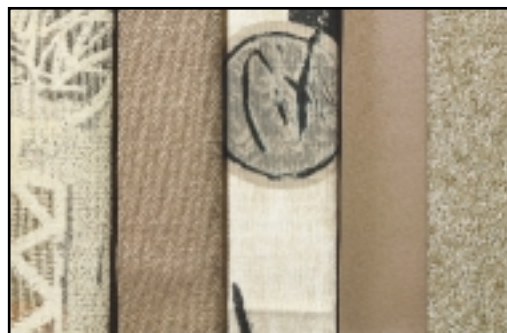
for the 2001 La Palma

The following designations represent the fabric or carpet usage for all seven (7) interior decors:

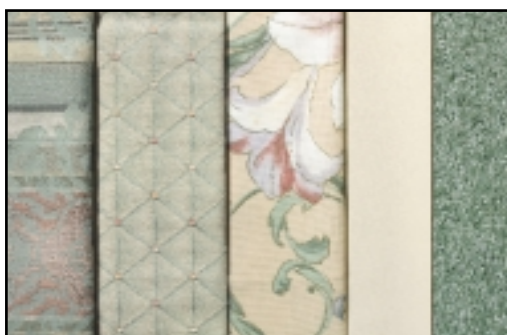
A - Sofa, B - Bedspread, C - Dining or Chair, D - Vinyl/Leather Dash/Furniture, E - Carpet

A B C D E

Smokey Mountains



Peacock



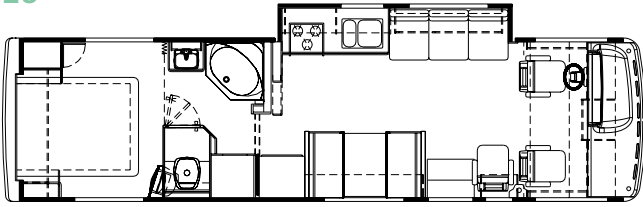
Holly Berry



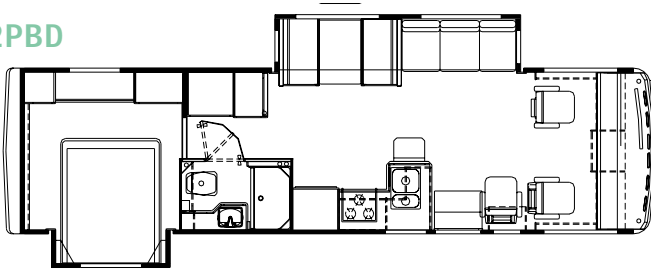
While the color of the motorhomes exterior and the interior fabrics depicted in this sales brochure are intended to depict the exterior and interior choices available, the colors depicted may not be an exact match of the actual colors because of the variances in printing, photo-processing, the kind of print services used and variances caused by inserting the photographs within the sales brochure. Due to product improvements and/or changes during the course of the model year, photography represented herein may not reflect exact offerings in your unit. Please confirm item availability with your dealer at the time of the order.

Floorplans and options for the 2001 La Palma

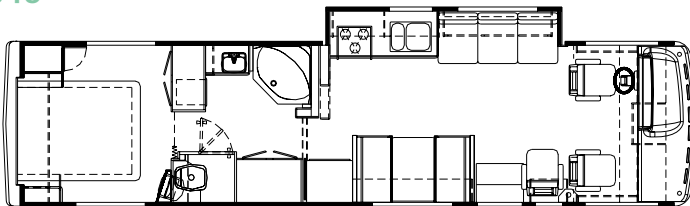
32S



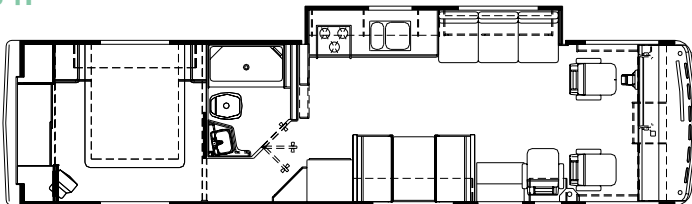
32PBD



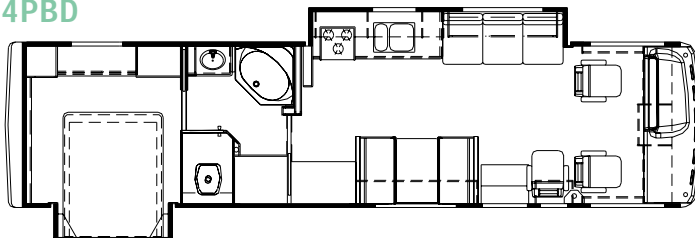
34S



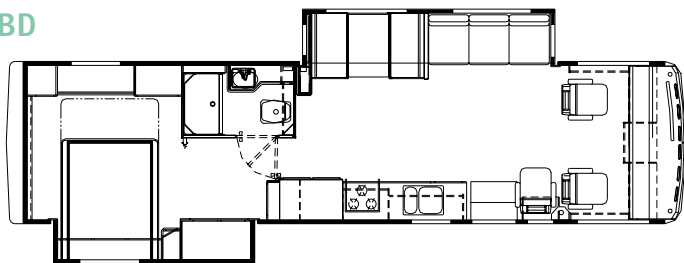
34F



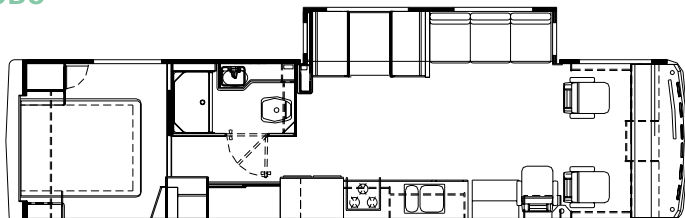
34PBD



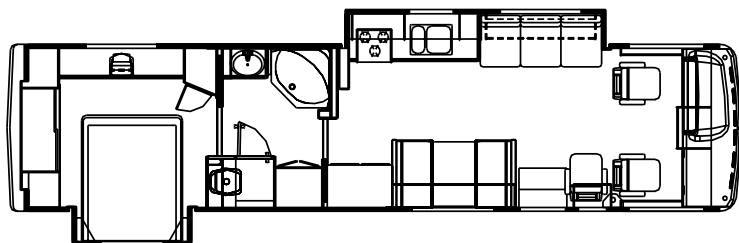
34SBD



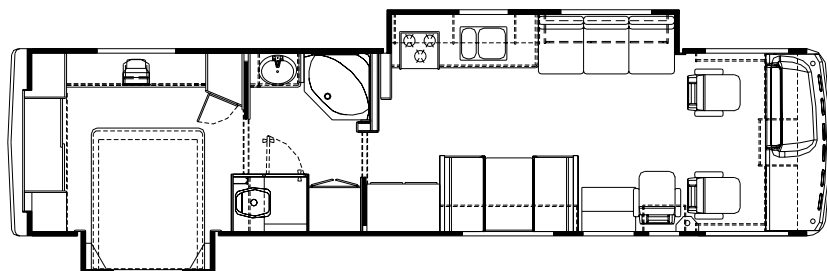
34SBS



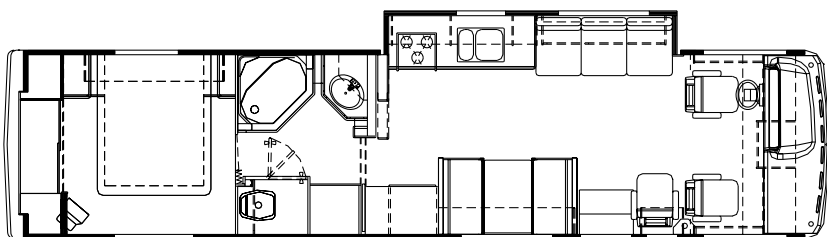
36SAD



36D



36G



Chassis and Weight Charts

for the 2001 La Palma

Ford Chassis/Engine/Suspension

Engine	Ford 6.8L Triton V10
Cubic Inch Displacement	415
Transmission	4-Speed Automatic w/Overdrive
Alternator	130 Amp
Rear Axle Ratio	5.38:1
Radial Tires	245/70R/19.5F

Weights	32'Models	34'Models	36'Models
Gross Vehicle Weight Rating	20,500lbs	20,500lbs	20,500lbs
Gross Combined Weight Rating	25,500lbs	25,500lbs	25,500lbs
Front Gross Axle Weight Rating	7,000lbs	7,000lbs	7,000lbs
Rear Gross Axle Weight Rating	13,500lbs	13,500lbs	13,500lbs

Measurements

Wheelbase	208"	228"	228" (238" 36SAD, 36D)
Exterior Height	11'8"	11'8"	11'8"
Exterior Width	100.5"	100.5"	100.5"
Exterior Length	32'8"	34'10"	36'6"

Tank Capacities**	(All Tank Capacities are approximate)		
Fuel	75 gallons	75 gallons	75 gallons
Grey Water	45 gallons	45 gallons	45 gallons
Black Water	45 gallons	45 gallons	45 gallons
Fresh Water	67 gallons	67 gallons	67 _(55 on 36D, 36SAD)
LP Tank***	32.9 gallons	32.9 gallons	32.9 gallons

** All tank capacities are approximate. Actual "useable capacity" may vary based upon specific installation.

***Tank manufacturer's listed water capacity (WC) actual filled. LP capacity is 80% of listing due to safety shut off required at tank.