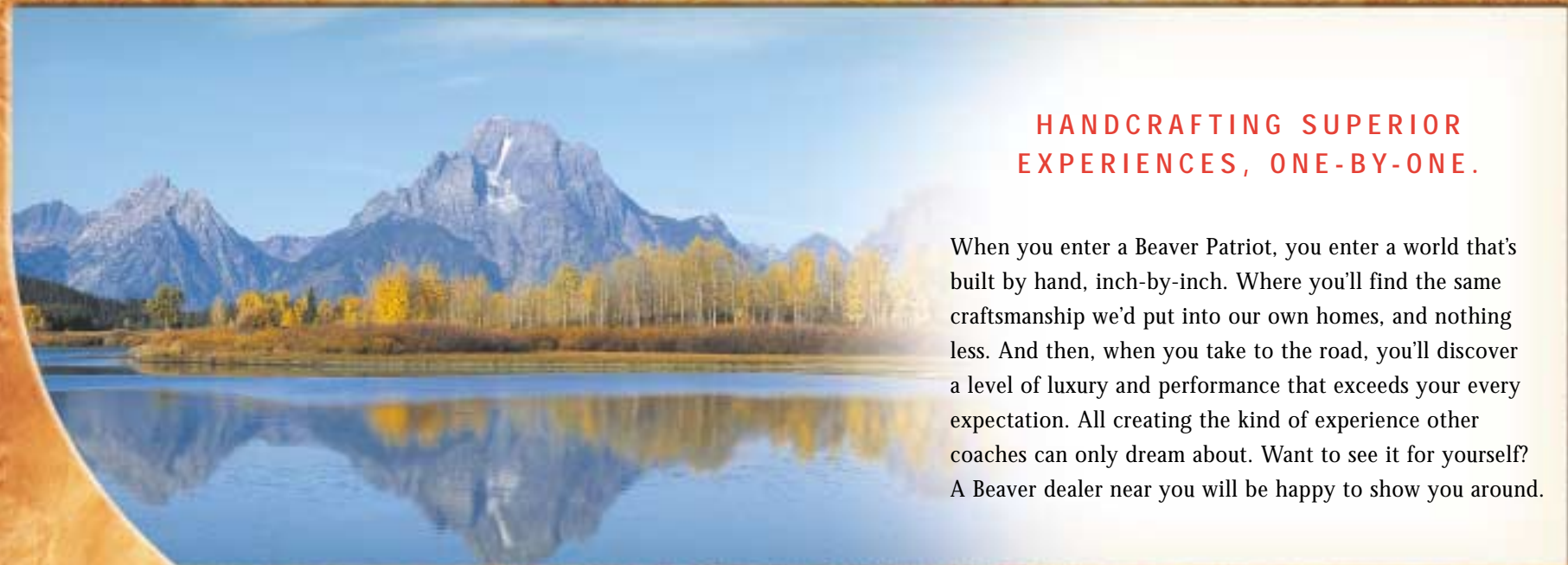


THE BEAVER FAMILY

BARON | SANTIAM | MONTEREY | CONTESSA | PATRIOT | MARQUIS



HANDCRAFTING SUPERIOR  
EXPERIENCES, ONE-BY-ONE.

When you enter a Beaver Patriot, you enter a world that's built by hand, inch-by-inch. Where you'll find the same craftsmanship we'd put into our own homes, and nothing less. And then, when you take to the road, you'll discover a level of luxury and performance that exceeds your every expectation. All creating the kind of experience other coaches can only dream about. Want to see it for yourself? A Beaver dealer near you will be happy to show you around.

DEALERSHIP IMPRINTS HERE



*One Coach at a Time.*

PO Box 5639  
20545 Murray Road  
Bend, OR 97701

**1-800-634-0855**

[www.beavermotorcoaches.com](http://www.beavermotorcoaches.com)

© 2003 Monaco Coach Corporation (NYSE: MNC) Printed in USA **03/03 BROBPATR**

BEAVER **PATRIOT**04

BEAVER **PATRIOT**04





POLISHED TO PERFECTION.

Yes, you could say we have a love affair with wood. With many woods, in fact. You see, the Patriot gives you a wide selection of cabinet styles, from such domestic woods as cherry, walnut, maple and oak.

This is a story of craftsmanship, pure and simple. It's the story of a cabinet shop with over 100 years of combined experience. And it's the story of master cabinet builders painstakingly hand-selecting and hand-crafting the finest hardwoods available. Why? Because when you're ready to make the move to a luxury motorcoach, you're looking for the best there is.



At Beaver, we know that quality isn't something that can be faked or forged. It's right there, for you to see. Like our cabinets — built from the inside out to virtually eliminate the need for holes, plugs or fillers. And our cabinetry fascia frames — constructed out of solid wood, period.

Sure, in the pages ahead, you'll also see our commitment to advanced technologies and luxurious amenities. But first, we wanted to show you something you'll never find in any other motorcoach. Our craftsmanship.



*One Coach at a Time.*



40' Yorktown shown in Chanel Suite/Ritz Paris with Rift White Oak Cabinetry.

PATRIOT04

STAKING YOUR CLAIM TO THE  
FREEDOM OF THE OPEN ROAD.

There's no better way to experience North America's great roadways than in a 2004 Patriot. With its optional Thunder package, you'll have the full force of a Caterpillar® 505 horsepower engine combined with the unmatched ride and handling of the exclusive Roadmaster M-Series chassis. The Patriot gives you a presence on the road that's as breathtaking as the scenery.



PATRIOT04 EXTERIORS, FABRICS & WOODS



COSMOPOLITAN  
Featuring fabrics by Paloma Picasso



CARAVAN  
Featuring fabrics by Paloma Picasso



CHANEL SUITE  
Featuring fabrics from the  
Ritz Paris Collection



SILVER SABLE



MAJESTIC PINE



PARADISE COVE

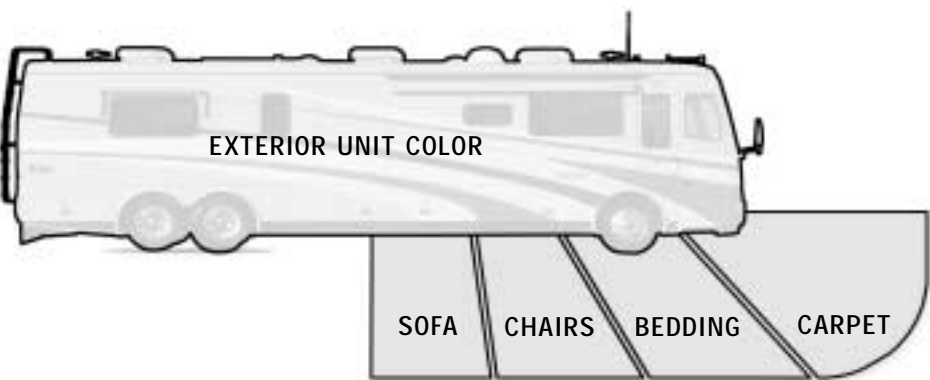


SANDAL WOOD

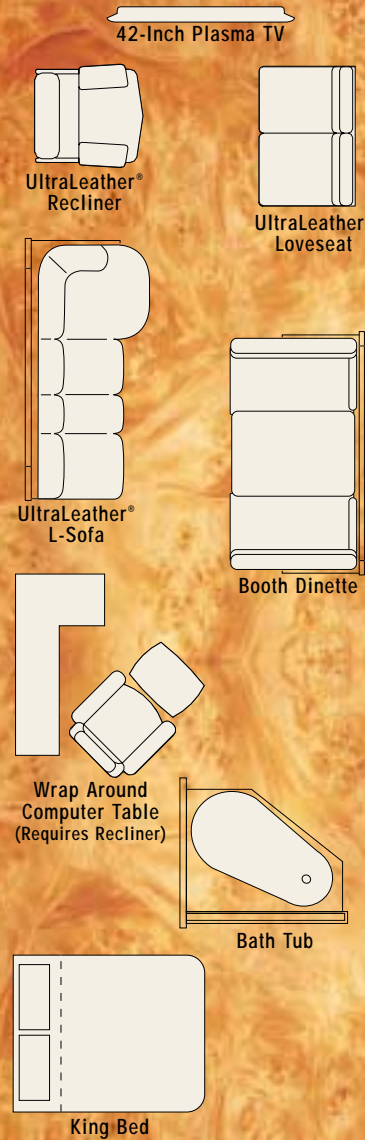
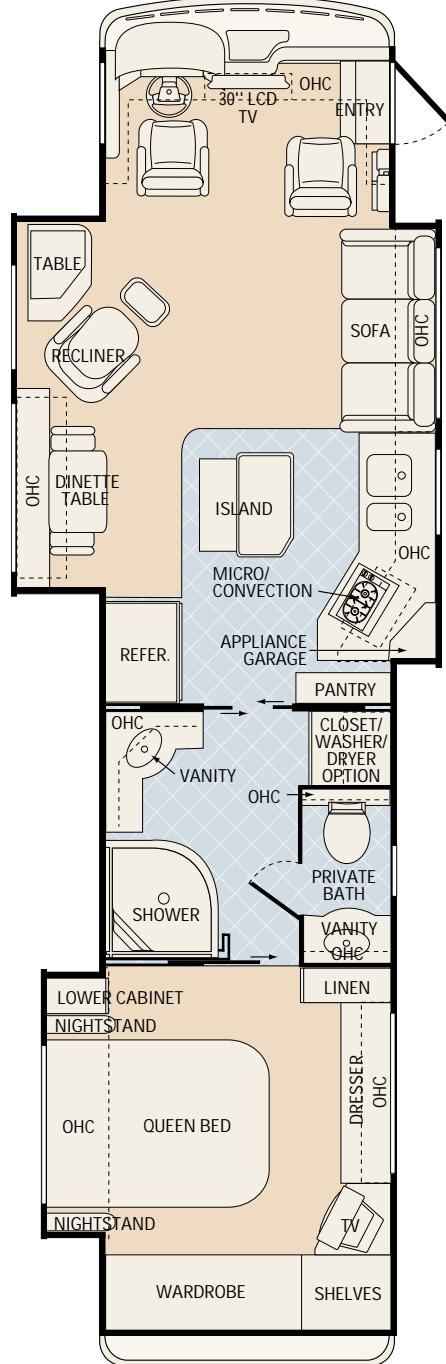
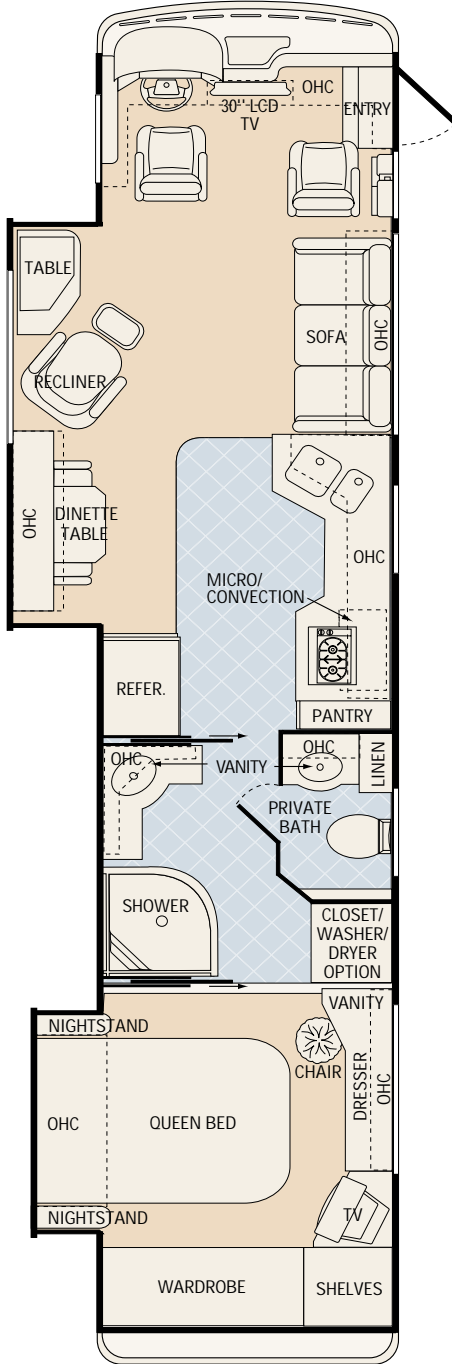
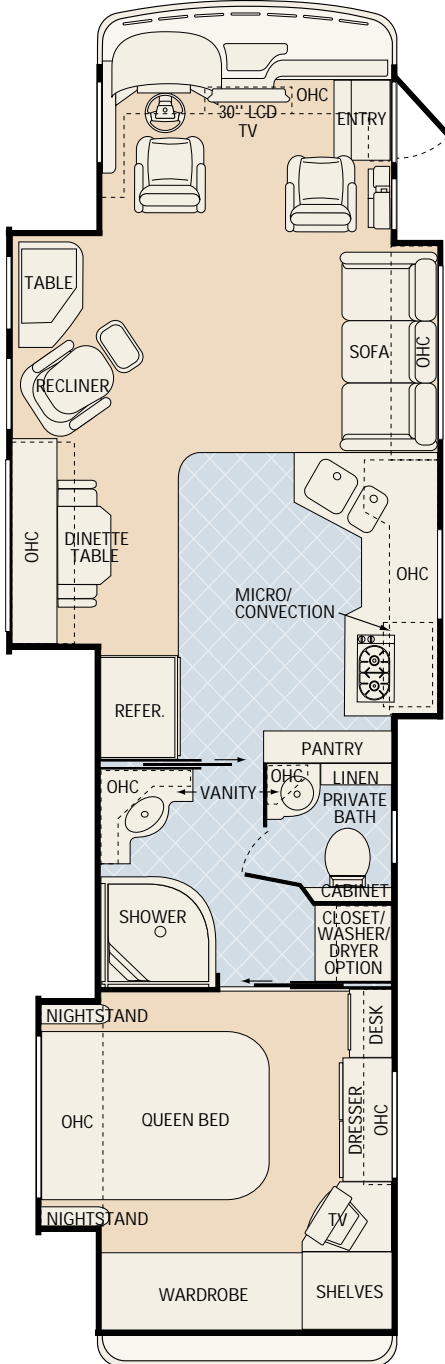
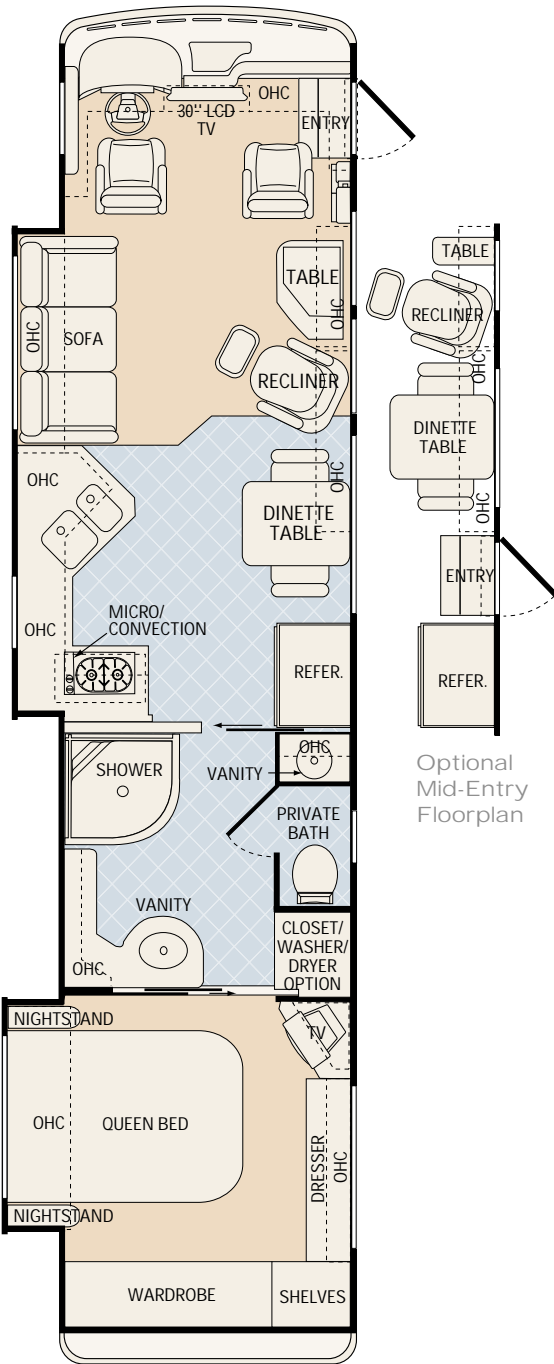
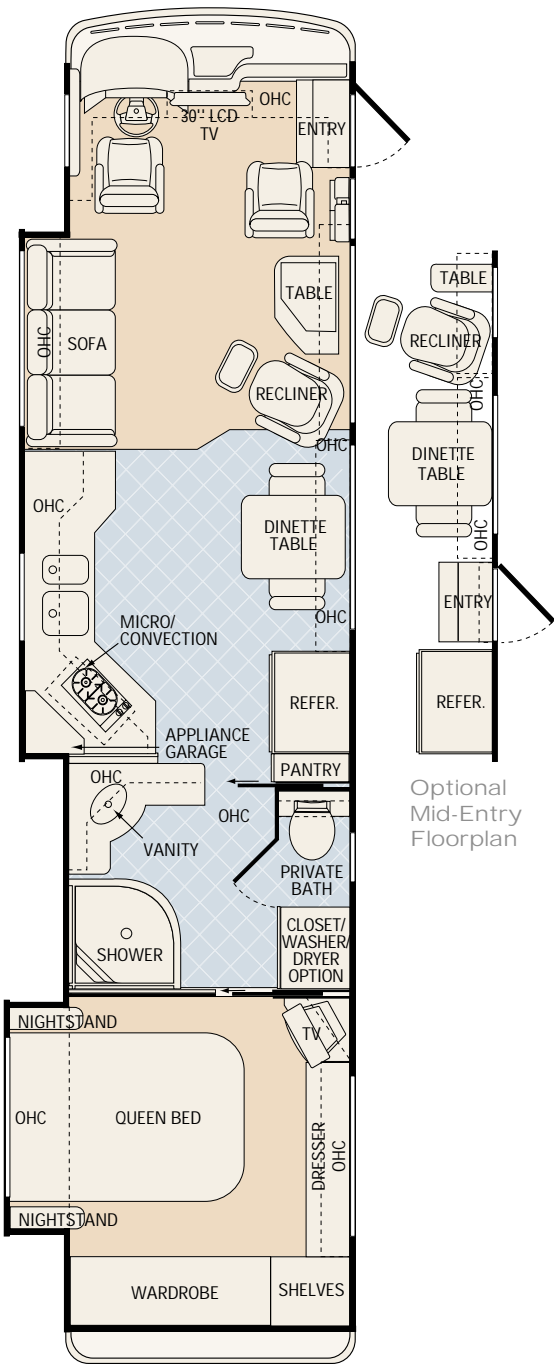
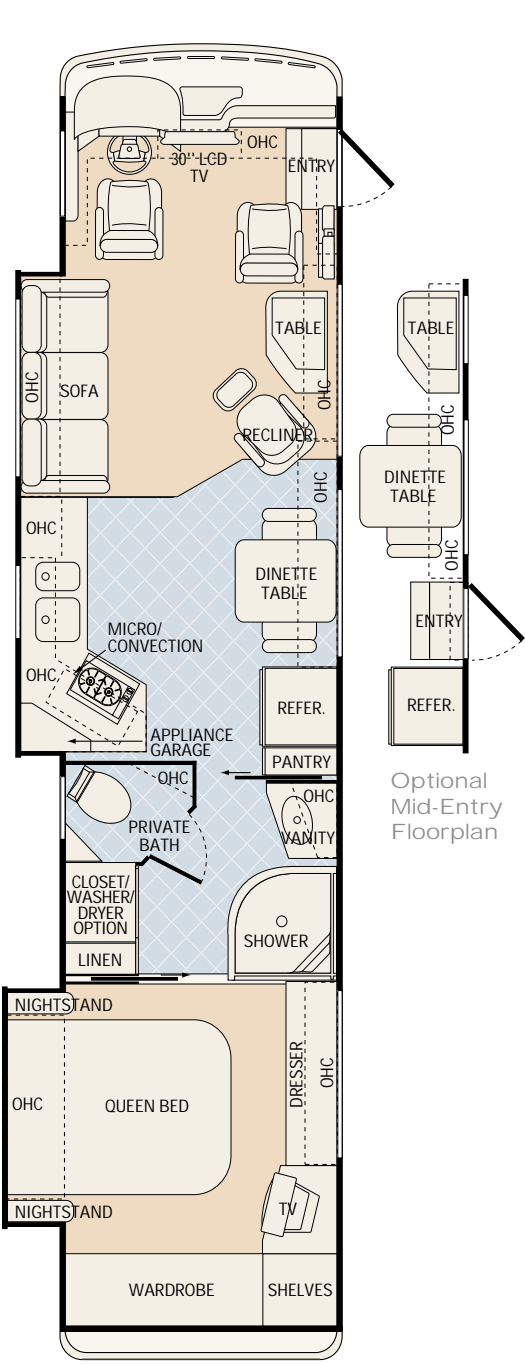
								
Rift White Oak	Rustic Cherry	Tight Knot Walnut	White Maple	Cherry with Mappa Burl	Cherry with Walnut Burl	Cherry with Makori Burl	Walnut with Mappa Burl	White Maple with Mappa Burl
Standard Cabinetry	Optional Cabinetry and Inlay Choices							

PATRIOT COLORS AND WOOD COMBINATIONS

You'll have no shortage of choices when it comes to the colors and woods in Beaver motorcoaches. Make your selection from rift white oak, tight knot walnut, rustic cherry or white maple. Then, customize your cabinetry with the inlay you want, including walnut, makori or mappa burl. The cabinets get their stunning and durable finish from a multi-step process that includes two top coats of lacquer. And the result is a coach that's as beautiful as a piece of heirloom furniture – solid, unique and distinctly yours.







OPTION EXCEPTIONS:  
Bath Tub (N/A: 37' Ticonderoga)

BODY CONSTRUCTION	<p>Adjustable Accelerator and Brake Pedals</p> <p>110V, 12V, and Phone Outlet</p> <p>Cup Holders</p> <p>Intermittent Windshield Wipers</p> <p>Lighted VIP Smartwheel® with Controls for Windshield Wipers, ICC, and Cruise Control</p> <p>Power Steering</p> <p>UltraLeather® 6-Way Power Pilot and Co-Pilot Seats with Power Footrest on Co-Pilot Seat</p> <p>Air Activated Power Step Well Cover</p> <p>Carpet Pilot and Co-Pilot Floor Mats</p> <p><b>Options</b></p> <p>UltraLeather® Extra-Wide Co-Pilot Seat with Power Footrest</p> <p>Power Sunvisors</p> <p>Power Privacy Drapes</p> <p>CB Radio</p> <p>OnStar® Mobile Assistance</p> <p>Sirius Satellite Radio System (Requires Subscription)</p> <p>GPS Navigational System w/DVD</p>	<p>TV Antenna and Booster</p> <p>Digital Satellite System Prep</p> <p>Cable TV Hook-Up and Telephone Jacks</p> <p>Combination Washer/Dryer Prep</p> <p><b>Options</b></p> <p>Combination Washer/Dryer</p> <p>Fully Automatic Digital Satellite System</p> <p>In-Motion Digital Satellite System</p> <p>42-Inch Plasma TV in Living Area Ceiling</p>	<p>Sculptured Carpeting in Living Area</p> <p>Day/Night Pleated Shades Throughout with Blackout Shades in Bedroom</p> <p>Mini Blinds in Kitchen and Bathroom</p> <p><b>Options</b></p> <p>Decors: Sandal Wood, Paradise Cove, Majestic Pine, Silver Sable, Chanel Suite</p> <p>Paloma Picasso Decors: Caravan w/Plank Flooring, Cosmopolitan w/Tile Flooring</p> <p>Rustic Cherry Cabinetry</p> <p>Tight Knot Walnut Cabinetry</p> <p>White Maple Cabinetry</p> <p>Accent Burl Cabinet Doors: Mappa Burl, Walnut Burl, Makori Burl</p> <p>Plank Flooring in Kitchen and Bathroom</p> <p>Manual Roman Shades</p>	ELECTRICAL SYSTEMS AND LIGHTS	<p><b>Standard Features</b></p> <p>50 Amp 120V Distribution Panel</p> <p>Power Cord Reel</p> <p>Onan® 10.0 kW QD Diesel Generator on Power Slide-Out</p> <p>2000 Watt Inverter</p> <p>Solar Panel</p> <p>Two 12V Deep Cycle Chassis Batteries</p> <p>Four 6V Deep Cycle Coach Batteries</p> <p>Battery Disconnect Switches</p> <p>Porch Light</p> <p>Pilot and Co-Pilot Map Lights</p> <p>Power Entry Step with Light</p> <p>Lights in Outside Storage Compartment</p> <p>120V Receptacle Inside Storage Compartment</p> <p>Computer Hook-Up with Phone Jack in Dinette Area</p> <p>Fluorescent Lighting in Kitchen, Bath, and Bedroom Area</p> <p>Decorative Dining Light</p> <p>Cosmetic Vanity Lights in Bathroom</p> <p>Halogen Lights under Overhead Cabinets and Throughout</p> <p>Decorative Lighting in Living Room and Bedroom</p> <p><b>Options</b></p> <p>2500 Watt Pure Sine Inverter</p>	<p>No-Fuss Flush Black Holding Tank Rinsing System</p> <p>Insulated Systems Compartment with Easy Access to Hook-Up</p> <p>Outside Sprayer with Hot and Cold Water</p> <p>Gravity and Pressurized Water Fill</p> <p><b>Options</b></p> <p>Bath Tub (N/A: 37’ Ticonderoga)</p>	HEATING, VENTS, AND AIR CONDITIONING	<p><b>Standard Features</b></p> <p>Two Low Profile Ducted 13.5M BTU Roof Air Conditioners with Heat Pumps</p> <p>Aqua-Hot® Heating System</p> <p>Electronic AC/Heat Climate Control System</p> <p>In-Floor Ducted Heating System</p> <p>12V Attic Fan in Bath with Sensor</p> <p>12V Attic Fan in Kitchen with Sensor</p> <p><b>Options</b></p> <p>Two Low Profile 110V Baseboard Heaters</p>	WINDOWS, DOORS, AND AWNINGS	<p><b>Standard Features</b></p> <p>Radius Dual Pane Safety Glass Dark Tinted Slider Windows</p> <p>Front Entry Door with Removable Screen</p> <p>Keyless Entry System with Pocket Remote</p> <p>Interior and Exterior Grab Handles</p> <p>Tinted Skylight in Bathroom</p> <p>Automatic Patio Awning with Color Coordinated Hardware</p> <p>Slide-Out Topper Awnings</p> <p>Window Awning Over Passenger Side Bedroom Window</p>	SAFETY	<p><b>Options</b></p> <p>Girard® Automatic Patio Awning</p> <p>Carefree® Automatic Front Door Awning</p> <p><b>Standard Features</b></p> <p>Fire Extinguisher</p> <p>Back-Up Alarm</p> <p>Deadbolt Lock on Entrance Door</p> <p>120V GFI Protected Circuit (Kitchen, Bathroom, Exterior)</p> <p>LP Gas Detector</p> <p>Smoke Detector</p> <p>Carbon Monoxide Detector</p> <p>Integrated Pilot and Co-Pilot Three-Point Seat Belts (Lap and Shoulder)</p> <p>Third Brake Safety Light</p> <p>Egress Window</p> <p><b>Options</b></p> <p>Deluxe Security System</p> <p>Security Safe</p>	CHASSIS, ENGINE, AND SUSPENSION	<p><b>Standard Features</b></p> <p>M10S-Series Chassis (40’ Models) or Roadmaster M8S-Series Chassis (37’ Models)</p> <p>Cummins® ISL 400 HP Engine with Allison® 3000 MH World Transmission and Electronic Shifter</p> <p>Torque: (1200 Lbs./Ft. Max. Net at 1,300 RPM)</p> <p>Rear Axle Ratio: 4.33:1</p> <p>Cubic Inch Displacement: 540”/8.8L</p> <p>160 Amp Alternator</p> <p>Dual Fuel Fill</p> <p>Polished Aluminum Wheels</p> <p>Tires: 295/80R/22.5</p>	<p>Cushion Air Glide Suspension with Eight Air Bags and Eight Shock Absorbers (Ten Bags/Shocks on 40’ Models)</p> <p>Anti-Lock Braking System with Full Air Brakes (Disc)</p> <p>Anti-Lock Braking System on Tag Axle (Drum) (40’ &amp; 42’ Models)</p> <p>Jacobs Engine Brake</p> <p>Auto Slack Adjusters</p> <p>Fuel/Water Separator</p> <p>Air Cleaner Restriction Indicator</p> <p>Engine Block Heater with Switch on Dash (N/A with C12)</p> <p>Hydraulic Leveling System</p> <p>10,000 lb. Hitch Receiver* with Six-Point Connector</p> <p>Undercoating</p> <p><b>Options</b></p> <p>Thunder Package: Caterpillar® 505 HP C12 Engine and Thunder Logos on the Cockpit Seats (40’ Models)</p> <p>Dual Leveling System (Air/Hydraulic)</p> <p>Air Leveling</p> <p>*Your towed vehicle should be equipped with auxiliary brakes if the weight of the towed load exceeds 1,000 lbs.</p>	
COCKPIT	<p><b>Standard Features</b></p> <p>Fiberglass Automotive Dash with Bird’s-Eye Burl Instrumentation Panel</p> <p>Tan Gauges with Gun Metal Bezels</p> <p>Aladdin Video Coach System</p> <p>Scissor Sunvisors</p> <p>In-Dash Rear Vision System and Color Monitor with AM/FM Stereo/CD Changer</p>	<p>Adjustable Accelerator and Brake Pedals</p> <p>110V, 12V, and Phone Outlet</p> <p>Cup Holders</p> <p>Intermittent Windshield Wipers</p> <p>Lighted VIP Smartwheel® with Controls for Windshield Wipers, ICC, and Cruise Control</p> <p>Power Steering</p> <p>UltraLeather® 6-Way Power Pilot and Co-Pilot Seats with Power Footrest on Co-Pilot Seat</p> <p>Air Activated Power Step Well Cover</p> <p>Carpet Pilot and Co-Pilot Floor Mats</p> <p><b>Options</b></p> <p>UltraLeather® Extra-Wide Co-Pilot Seat with Power Footrest</p> <p>Power Sunvisors</p> <p>Power Privacy Drapes</p> <p>CB Radio</p> <p>OnStar® Mobile Assistance</p> <p>Sirius Satellite Radio System (Requires Subscription)</p> <p>GPS Navigational System w/DVD</p>	<p>TV Antenna and Booster</p> <p>Digital Satellite System Prep</p> <p>Cable TV Hook-Up and Telephone Jacks</p> <p>Combination Washer/Dryer Prep</p> <p><b>Options</b></p> <p>Combination Washer/Dryer</p> <p>Fully Automatic Digital Satellite System</p> <p>In-Motion Digital Satellite System</p> <p>42-Inch Plasma TV in Living Area Ceiling</p>	<p>Sculptured Carpeting in Living Area</p> <p>Day/Night Pleated Shades Throughout with Blackout Shades in Bedroom</p> <p>Mini Blinds in Kitchen and Bathroom</p> <p><b>Options</b></p> <p>Decors: Sandal Wood, Paradise Cove, Majestic Pine, Silver Sable, Chanel Suite</p> <p>Paloma Picasso Decors: Caravan w/Plank Flooring, Cosmopolitan w/Tile Flooring</p> <p>Rustic Cherry Cabinetry</p> <p>Tight Knot Walnut Cabinetry</p> <p>White Maple Cabinetry</p> <p>Accent Burl Cabinet Doors: Mappa Burl, Walnut Burl, Makori Burl</p> <p>Plank Flooring in Kitchen and Bathroom</p> <p>Manual Roman Shades</p>	ELECTRICAL SYSTEMS AND LIGHTS	<p><b>Standard Features</b></p> <p>50 Amp 120V Distribution Panel</p> <p>Power Cord Reel</p> <p>Onan® 10.0 kW QD Diesel Generator on Power Slide-Out</p> <p>2000 Watt Inverter</p> <p>Solar Panel</p> <p>Two 12V Deep Cycle Chassis Batteries</p> <p>Four 6V Deep Cycle Coach Batteries</p> <p>Battery Disconnect Switches</p> <p>Porch Light</p> <p>Pilot and Co-Pilot Map Lights</p> <p>Power Entry Step with Light</p> <p>Lights in Outside Storage Compartment</p> <p>120V Receptacle Inside Storage Compartment</p> <p>Computer Hook-Up with Phone Jack in Dinette Area</p> <p>Fluorescent Lighting in Kitchen, Bath, and Bedroom Area</p> <p>Decorative Dining Light</p> <p>Cosmetic Vanity Lights in Bathroom</p> <p>Halogen Lights under Overhead Cabinets and Throughout</p> <p>Decorative Lighting in Living Room and Bedroom</p> <p><b>Options</b></p> <p>2500 Watt Pure Sine Inverter</p>	<p>No-Fuss Flush Black Holding Tank Rinsing System</p> <p>Insulated Systems Compartment with Easy Access to Hook-Up</p> <p>Outside Sprayer with Hot and Cold Water</p> <p>Gravity and Pressurized Water Fill</p> <p><b>Options</b></p> <p>Bath Tub (N/A: 37’ Ticonderoga)</p>	HEATING, VENTS, AND AIR CONDITIONING	<p><b>Standard Features</b></p> <p>Two Low Profile Ducted 13.5M BTU Roof Air Conditioners with Heat Pumps</p> <p>Aqua-Hot® Heating System</p> <p>Electronic AC/Heat Climate Control System</p> <p>In-Floor Ducted Heating System</p> <p>12V Attic Fan in Bath with Sensor</p> <p>12V Attic Fan in Kitchen with Sensor</p> <p><b>Options</b></p> <p>Two Low Profile 110V Baseboard Heaters</p>	WINDOWS, DOORS, AND AWNINGS	<p><b>Standard Features</b></p> <p>Radius Dual Pane Safety Glass Dark Tinted Slider Windows</p> <p>Front Entry Door with Removable Screen</p> <p>Keyless Entry System with Pocket Remote</p> <p>Interior and Exterior Grab Handles</p> <p>Tinted Skylight in Bathroom</p> <p>Automatic Patio Awning with Color Coordinated Hardware</p> <p>Slide-Out Topper Awnings</p> <p>Window Awning Over Passenger Side Bedroom Window</p>	SAFETY	<p><b>Options</b></p> <p>Girard® Automatic Patio Awning</p> <p>Carefree® Automatic Front Door Awning</p> <p><b>Standard Features</b></p> <p>Fire Extinguisher</p> <p>Back-Up Alarm</p> <p>Deadbolt Lock on Entrance Door</p> <p>120V GFI Protected Circuit (Kitchen, Bathroom, Exterior)</p> <p>LP Gas Detector</p> <p>Smoke Detector</p> <p>Carbon Monoxide Detector</p> <p>Integrated Pilot and Co-Pilot Three-Point Seat Belts (Lap and Shoulder)</p> <p>Third Brake Safety Light</p> <p>Egress Window</p> <p><b>Options</b></p> <p>Deluxe Security System</p> <p>Security Safe</p>	CHASSIS, ENGINE, AND SUSPENSION	<p><b>Standard Features</b></p> <p>M10S-Series Chassis (40’ Models) or Roadmaster M8S-Series Chassis (37’ Models)</p> <p>Cummins® ISL 400 HP Engine with Allison® 3000 MH World Transmission and Electronic Shifter</p> <p>Torque: (1200 Lbs./Ft. Max. Net at 1,300 RPM)</p> <p>Rear Axle Ratio: 4.33:1</p> <p>Cubic Inch Displacement: 540”/8.8L</p> <p>160 Amp Alternator</p> <p>Dual Fuel Fill</p> <p>Polished Aluminum Wheels</p> <p>Tires: 295/80R/22.5</p>	<p>Cushion Air Glide Suspension with Eight Air Bags and Eight Shock Absorbers (Ten Bags/Shocks on 40’ Models)</p> <p>Anti-Lock Braking System with Full Air Brakes (Disc)</p> <p>Anti-Lock Braking System on Tag Axle (Drum) (40’ &amp; 42’ Models)</p> <p>Jacobs Engine Brake</p> <p>Auto Slack Adjusters</p> <p>Fuel/Water Separator</p> <p>Air Cleaner Restriction Indicator</p> <p>Engine Block Heater with Switch on Dash (N/A with C12)</p> <p>Hydraulic Leveling System</p> <p>10,000 lb. Hitch Receiver* with Six-Point Connector</p> <p>Undercoating</p> <p><b>Options</b></p> <p>Thunder Package: Caterpillar® 505 HP C12 Engine and Thunder Logos on the Cockpit Seats (40’ Models)</p> <p>Dual Leveling System (Air/Hydraulic)</p> <p>Air Leveling</p> <p>*Your towed vehicle should be equipped with auxiliary brakes if the weight of the towed load exceeds 1,000 lbs.</p>
APPLIANCES AND ACCESSORIES	<p><b>Standard Features</b></p> <p>Four-Door Refrigerator with Ice Maker and Raised Panel Doors</p> <p>High Output Two-Burner Recessed Cooktop</p> <p>Convection Microwave with Touch Control</p> <p>30-Inch LCD Color Stereo TV in Living Area</p> <p>20-Inch Flat Screen Color Stereo TV in Bedroom</p> <p>Home Theater System with 5-Disc DVD Player</p> <p>Stereo VCR</p>	<p>Adjustable Accelerator and Brake Pedals</p> <p>110V, 12V, and Phone Outlet</p> <p>Cup Holders</p> <p>Intermittent Windshield Wipers</p> <p>Lighted VIP Smartwheel® with Controls for Windshield Wipers, ICC, and Cruise Control</p> <p>Power Steering</p> <p>UltraLeather® 6-Way Power Pilot and Co-Pilot Seats with Power Footrest on Co-Pilot Seat</p> <p>Air Activated Power Step Well Cover</p> <p>Carpet Pilot and Co-Pilot Floor Mats</p> <p><b>Options</b></p> <p>UltraLeather® Extra-Wide Co-Pilot Seat with Power Footrest</p> <p>Power Sunvisors</p> <p>Power Privacy Drapes</p> <p>CB Radio</p> <p>OnStar® Mobile Assistance</p> <p>Sirius Satellite Radio System (Requires Subscription)</p> <p>GPS Navigational System w/DVD</p>	<p>TV Antenna and Booster</p> <p>Digital Satellite System Prep</p> <p>Cable TV Hook-Up and Telephone Jacks</p> <p>Combination Washer/Dryer Prep</p> <p><b>Options</b></p> <p>Combination Washer/Dryer</p> <p>Fully Automatic Digital Satellite System</p> <p>In-Motion Digital Satellite System</p> <p>42-Inch Plasma TV in Living Area Ceiling</p>	<p>Sculptured Carpeting in Living Area</p> <p>Day/Night Pleated Shades Throughout with Blackout Shades in Bedroom</p> <p>Mini Blinds in Kitchen and Bathroom</p> <p><b>Options</b></p> <p>Decors: Sandal Wood, Paradise Cove, Majestic Pine, Silver Sable, Chanel Suite</p> <p>Paloma Picasso Decors: Caravan w/Plank Flooring, Cosmopolitan w/Tile Flooring</p> <p>Rustic Cherry Cabinetry</p> <p>Tight Knot Walnut Cabinetry</p> <p>White Maple Cabinetry</p> <p>Accent Burl Cabinet Doors: Mappa Burl, Walnut Burl, Makori Burl</p> <p>Plank Flooring in Kitchen and Bathroom</p> <p>Manual Roman Shades</p>	ELECTRICAL SYSTEMS AND LIGHTS	<p><b>Standard Features</b></p> <p>50 Amp 120V Distribution Panel</p> <p>Power Cord Reel</p> <p>Onan® 10.0 kW QD Diesel Generator on Power Slide-Out</p> <p>2000 Watt Inverter</p> <p>Solar Panel</p> <p>Two 12V Deep Cycle Chassis Batteries</p> <p>Four 6V Deep Cycle Coach Batteries</p> <p>Battery Disconnect Switches</p> <p>Porch Light</p> <p>Pilot and Co-Pilot Map Lights</p> <p>Power Entry Step with Light</p> <p>Lights in Outside Storage Compartment</p> <p>120V Receptacle Inside Storage Compartment</p> <p>Computer Hook-Up with Phone Jack in Dinette Area</p> <p>Fluorescent Lighting in Kitchen, Bath, and Bedroom Area</p> <p>Decorative Dining Light</p> <p>Cosmetic Vanity Lights in Bathroom</p> <p>Halogen Lights under Overhead Cabinets and Throughout</p> <p>Decorative Lighting in Living Room and Bedroom</p> <p><b>Options</b></p> <p>2500 Watt Pure Sine Inverter</p>	<p>No-Fuss Flush Black Holding Tank Rinsing System</p> <p>Insulated Systems Compartment with Easy Access to Hook-Up</p> <p>Outside Sprayer with Hot and Cold Water</p> <p>Gravity and Pressurized Water Fill</p> <p><b>Options</b></p> <p>Bath Tub (N/A: 37’ Ticonderoga)</p>	HEATING, VENTS, AND AIR CONDITIONING	<p><b>Standard Features</b></p> <p>Two Low Profile Ducted 13.5M BTU Roof Air Conditioners with Heat Pumps</p> <p>Aqua-Hot® Heating System</p> <p>Electronic AC/Heat Climate Control System</p> <p>In-Floor Ducted Heating System</p> <p>12V Attic Fan in Bath with Sensor</p> <p>12V Attic Fan in Kitchen with Sensor</p> <p><b>Options</b></p> <p>Two Low Profile 110V Baseboard Heaters</p>	WINDOWS, DOORS, AND AWNINGS	<p><b>Standard Features</b></p> <p>Radius Dual Pane Safety Glass Dark Tinted Slider Windows</p> <p>Front Entry Door with Removable Screen</p> <p>Keyless Entry System with Pocket Remote</p> <p>Interior and Exterior Grab Handles</p> <p>Tinted Skylight in Bathroom</p> <p>Automatic Patio Awning with Color Coordinated Hardware</p> <p>Slide-Out Topper Awnings</p> <p>Window Awning Over Passenger Side Bedroom Window</p>	SAFETY	<p><b>Options</b></p> <p>Girard® Automatic Patio Awning</p> <p>Carefree® Automatic Front Door Awning</p> <p><b>Standard Features</b></p> <p>Fire Extinguisher</p> <p>Back-Up Alarm</p> <p>Deadbolt Lock on Entrance Door</p> <p>120V GFI Protected Circuit (Kitchen, Bathroom, Exterior)</p> <p>LP Gas Detector</p> <p>Smoke Detector</p> <p>Carbon Monoxide Detector</p> <p>Integrated Pilot and Co-Pilot Three-Point Seat Belts (Lap and Shoulder)</p> <p>Third Brake Safety Light</p> <p>Egress Window</p> <p><b>Options</b></p> <p>Deluxe Security System</p> <p>Security Safe</p>	CHASSIS, ENGINE, AND SUSPENSION	<p><b>Standard Features</b></p> <p>M10S-Series Chassis (40’ Models) or Roadmaster M8S-Series Chassis (37’ Models)</p> <p>Cummins® ISL 400 HP Engine with Allison® 3000 MH World Transmission and Electronic Shifter</p> <p>Torque: (1200 Lbs./Ft. Max. Net at 1,300 RPM)</p> <p>Rear Axle Ratio: 4.33:1</p> <p>Cubic Inch Displacement: 540”/8.8L</p> <p>160 Amp Alternator</p> <p>Dual Fuel Fill</p> <p>Polished Aluminum Wheels</p> <p>Tires: 295/80R/22.5</p>	<p>Cushion Air Glide Suspension with Eight Air Bags and Eight Shock Absorbers (Ten Bags/Shocks on 40’ Models)</p> <p>Anti-Lock Braking System with Full Air Brakes (Disc)</p> <p>Anti-Lock Braking System on Tag Axle (Drum) (40’ &amp; 42’ Models)</p> <p>Jacobs Engine Brake</p> <p>Auto Slack Adjusters</p> <p>Fuel/Water Separator</p> <p>Air Cleaner Restriction Indicator</p> <p>Engine Block Heater with Switch on Dash (N/A with C12)</p> <p>Hydraulic Leveling System</p> <p>10,000 lb. Hitch Receiver* with Six-Point Connector</p> <p>Undercoating</p> <p><b>Options</b></p> <p>Thunder Package: Caterpillar® 505 HP C12 Engine and Thunder Logos on the Cockpit Seats (40’ Models)</p> <p>Dual Leveling System (Air/Hydraulic)</p> <p>Air Leveling</p> <p>*Your towed vehicle should be equipped with auxiliary brakes if the weight of the towed load exceeds 1,000 lbs.</p>



WEIGHT RATINGS (LBS.)	37' TICONDEROGA	40' MONTICELLO	40' PRINCETON	40' LEXINGTON	40' GETTYSBURG	40' YORKTOWN
Gross Vehicle	36,300	46,300	46,300	46,300	46,300	46,300
Gross Combined	46,300	56,300	56,300	56,300	56,300	56,300
Front Gross Axle	15,300	15,300	15,300	15,300	15,300	15,300
Rear Gross Axle	21,000	21,000	21,000	21,000	21,000	21,000
Tag Axle	N/A	10,000	10,000	10,000	10,000	10,000
MEASUREMENTS						
Wheelbase	231"	248"	248"	248"	263"	263"
Overall Length	37' 8"	39' 5"	39' 5"	39' 9"	40' 10"	40' 10"
Overall Height (with A/C)	12'	12'	12'	12'	12'	12'
Interior Height	78"	78"	78"	78"	78"	78"
Interior Width	94.5"	94.5"	94.5"	94.5"	94.5"	94.5"
Exterior Width	102"	102"	102"	102"	102"	102"
TANK CAPACITY (GAL.)						
Aqua-Hot®	16	16	16	16	16	16
Gray Tank	58	58	58	58	58	58
Black Tank	58	58	58	58	58	58
Fresh Tank	100	100	100	100	100	100
LP Tank*	29	29	29	29	29	29
Fuel Tank	148	148	148	148	148	148

\*Actual filled LP capacity is 80% of listing due to safety shut-off required on tank.

All tank capacities are estimated based upon calculations provided by the tank manufacturers and represent approximate capacities. The actual "usable capacity" may be greater or less than the estimated capacities based upon fabrication and installation of the tanks.

Due to the large variety of options and floorplan arrangements available to our customers, actual weights for each unit may differ. Beaver Motor Coaches provides a weight sticker on each unit we produce, which includes that unit's tank capacities and approximate weight. Consult your local Beaver Motor Coaches dealer for unit availability and further information. The information printed in this brochure reflects product design, fabrication, and component parts at the date of printing. The manufacturer reserves the right, at any time, to make changes in product design, material or component specifications as its sole option, without notice. This includes the substitution of components of a different brand or trade name, which will result in comparable performance. All information printed in this brochure is subject to change after the date of printing. Some features shown or mentioned in this brochure are optional and may only be available in selected floorplans. Photographs may show props or decorations that are not standard equipment on Beaver Motor Coach models. Beaver Motor Coaches, the Beaver logo and its design, are registered trademarks. All other products and company names are trademarks and/or registered trademarks of their respective holders.



WHEREVER YOU TRAVEL, YOU'RE ALWAYS PART OF THE FAMILY.

When you purchase a coach from Beaver, you become part of an industry-leading family of companies called the Monaco Coach Corporation. What does that mean for you? It means you have access to a wide array of benefits only we can offer. To begin with, your coach is built by

a level of expertise that could only be achieved through the synergy and combined experience of all our companies. Like, for example, such exclusive innovations as the Roadmaster chassis



— designed specifically for each individual model of our diesel coaches. You also get the benefit of our White Glove and factory delivery processes, for added peace of mind; and your dealer will be happy to tell you about such innovative programs as our Extended Care service agreements and new Certified Pre-Owned program,

guaranteeing a factory seal of approval for qualified pre-owned vehicles.

Of course, once you're on the road, you'll have access to our nationwide network of more than 350 service facilities, meaning wherever you travel, you're never far from a friend. Ready to roll? In a 2004 Beaver, the strength of our entire family is behind you every mile of the way.



MONACO COACH CORPORATION



350  
and growing

Service  
Facilities  
Nationwide

WARRANTIES	
12 MONTH/24,000 MILE basic limited warranty	
5 YEAR/50,000 MILE limited warranty on aluminum or steel frame structure of sidewall, roof, front and rear cap	
3 YEAR/36,000 MILE limited warranty on Roadmaster chassis	
Applies to certain models. See owner's manual for complete details.	