

BEAVER®



PATRIOT® BEAVER® 2006

One coach at a time. Yours.™



PATRIOT® 2006





THIS IS THE MARRIAGE OF ART AND SCIENCE.

Welcome to the 2006 Patriot and its impressive Thunder Package. Whichever model you choose, the stunning interior is designed to take luxury to a higher level, while the state-of-the-art technologies, Roadmaster S-Series chassis and Caterpillar® engine combine to deliver unbeatable performance. In short, this coach will take your breath away.



EVERY DETAIL IS A GIFT TO YOU.

Only an expertly handcrafted coach like the Patriot can confidently invite you to inspect every detail. From the uniquely beautiful cabinetry, to the decorative hardwood slide-out fascia, to the crown molding — you'll discover the extraordinary care that goes into making this a home.



(Opposite Page Photo)

Other highlights include the legless solid surface dinette table with a side-slide adjustment for added convenience, as well as ceramic tile flooring, optional sculptured carpeting and the stylish OptimaLeather™ Euro-recliner with ottoman.



HERE, IT'S ALL ABOUT CONVENIENCE.

At first glance, the Patriot will wow you with its beauty and craftsmanship. But we think you'll also appreciate its countless conveniences and thoughtful extras. The solid surface countertop, integrated sink and newly styled backsplash are all designed to be easily cared for, and you'll enjoy built-in storage for the countertop covers, a large pot and pan drawer, roomy pantry storage and lined cabinet shelves, to name just a few.

MULTIPLEX SYSTEM.

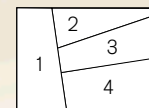
An exciting new feature this year is the Multiplex wiring system. Lighted switch panels like the one shown here are located throughout the coach, giving you more convenient access to the controls for the slide-outs, the lighting, including the dimmers, and more. Multiplexing also reduces the amount of wiring in the coach, reducing overall weight and making servicing easier.



A PERFECT MATCH FOR EVERY PERSONALITY.

Whether your tastes run from the traditional to the adventurous, our expert designers have assembled a color scheme that's right for you. No matter which one you choose, you'll enjoy a distinctive decor with plush fabrics, carpet and upholstery, as well as a uniquely durable exterior finish, featuring the rich luster of our deluxe full-body paint.

1. DINETTE
2. CARPET
3. SOFA
4. BEDSPREAD



DESIGNER SERIES

BIRDS OF PARADISE by Paloma Picasso



ALPACA II





BRIARCLIFFE



DESERT SUNSET



TROPICANA



THIS IS WHERE WE DO THINGS THE OLD-FASHIONED WAY.

The 2006 Patriot is a marvel of innovation, with a long list of state-of-the-art features, including a 2,800 watt pure sine wave inverter, the Aladdin™ video coach system, automatic traction control, and optional GPS and OnStar® mobile assistance systems — to name just a few. But here, in the Patriot's cabinet shop, it's all about Old World craftsmanship.

The hardwoods for our cabinets and the exotic burls used in our one-of-a-kind inlays come from all over the world — from South America to Northern Africa to Central Europe. Not only do we travel the globe in search of the best wood sources, but we also hand select our choice of trees to achieve greater consistency in grain, texture and color. A single coach may typically include an astounding 45 cabinets, 60 doors, two pocket doors, 40 drawer faces and literally hundreds of other pieces of wood.

Naturally, we wouldn't entrust these valuable resources to just anyone. In fact, our cabinet shop is comprised of highly skilled craftspeople with a combined total of more than 350 years of cabinetmaking and woodworking experience.

FROM START TO FINISH.

The Patriot's woodwork features a gloss finish. Stain is never used — what you see is the natural grain and tones of the wood.

A multi-layer finishing process achieves a magnificent luster. And as you can see here, nothing leaves the cabinet shop until it's been thoroughly inspected.



Cherry



Maple



Select Lumber



Design and Layout



Craftsmanship and Construction



Hidden Details



Hand Finishing



Intricate Workmanship



Multi-Layer Finish



Hand Sanded



Thorough Inspections



Cherry with Makori Inlay



Cherry with Maple Burl Inlay



Cherry with Mappa Burl Inlay



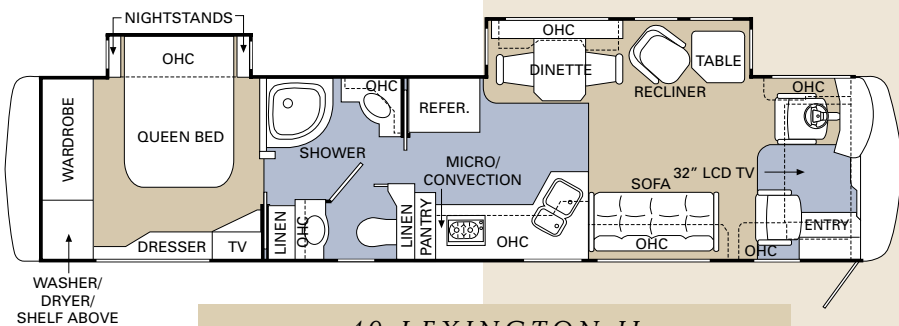
Maple with Bird's-Eye Maple Inlay



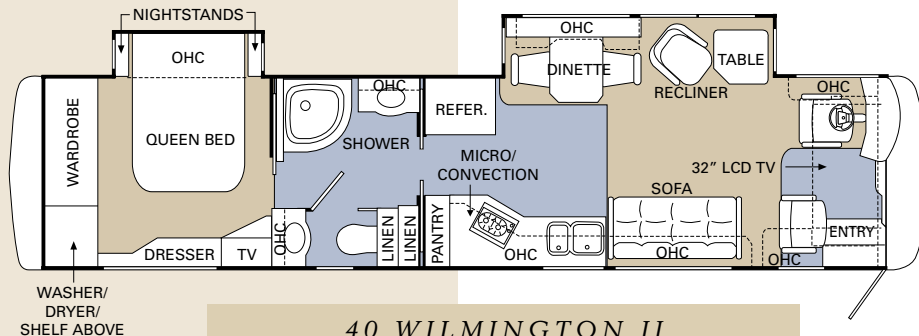
Maple with Mappa Burl Inlay



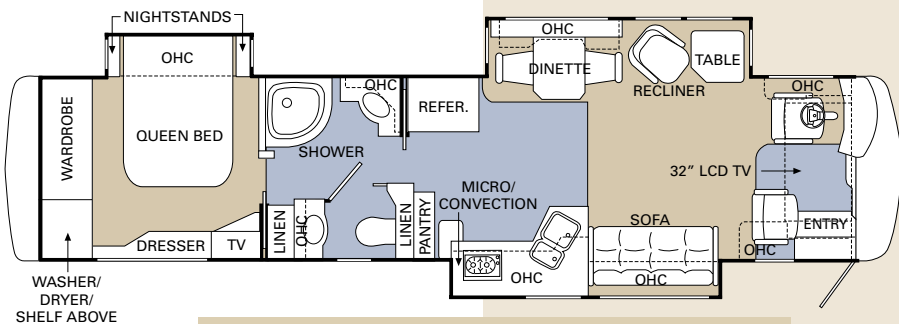
Maple with Makori Inlay



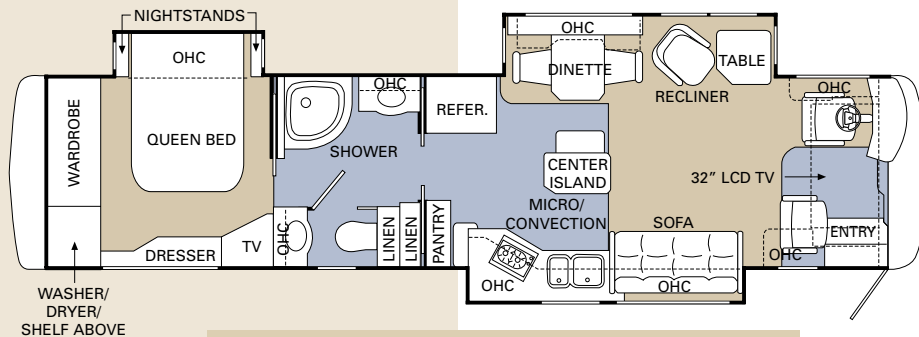
40 LEXINGTON II



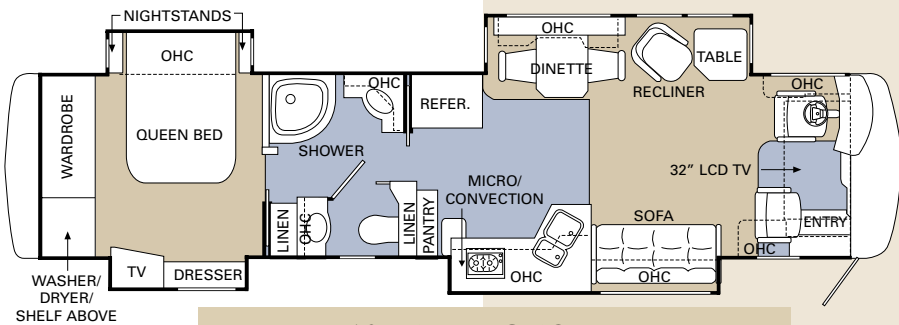
40 WILMINGTON II



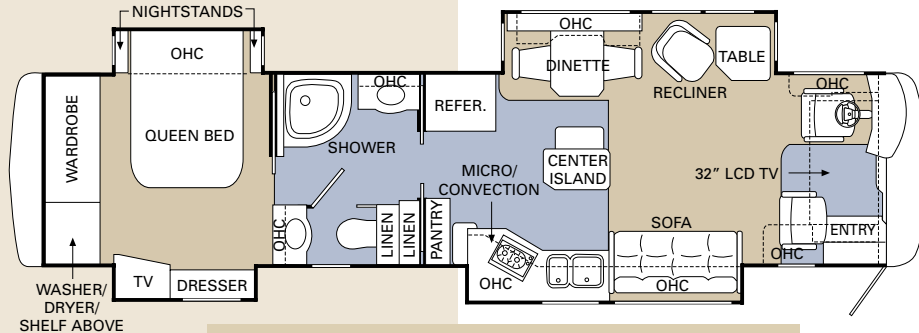
40 LEXINGTON III



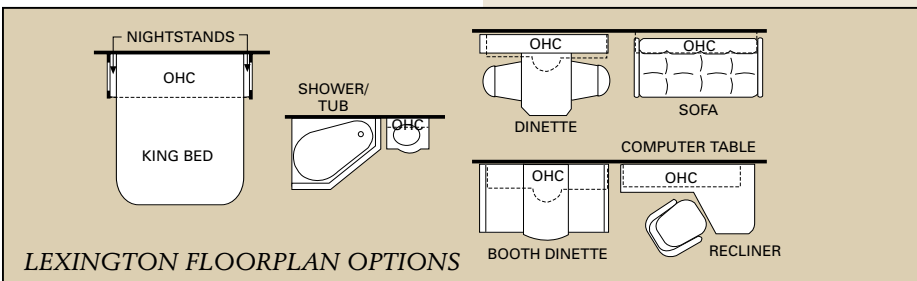
40 WILMINGTON III



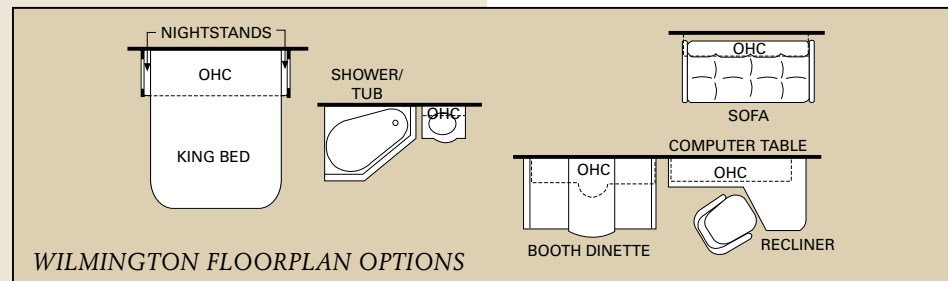
40 LEXINGTON IV



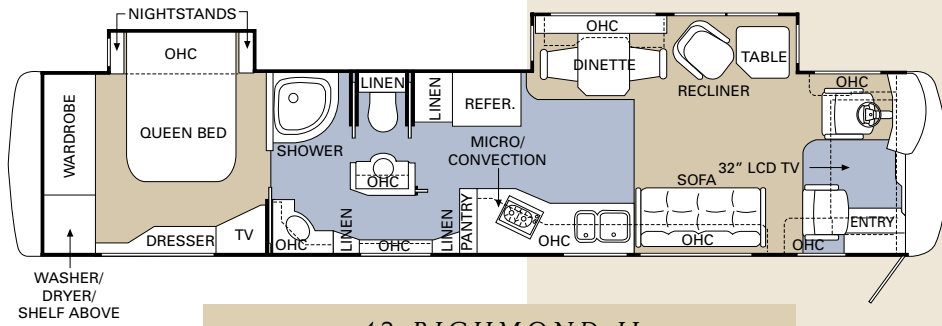
40 WILMINGTON IV



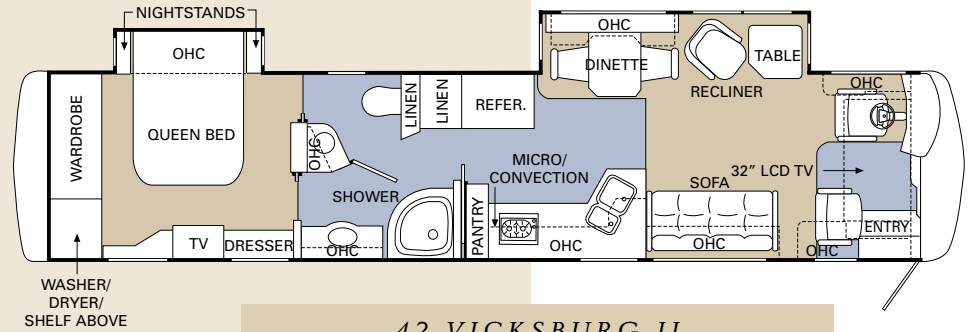
LEXINGTON FLOORPLAN OPTIONS



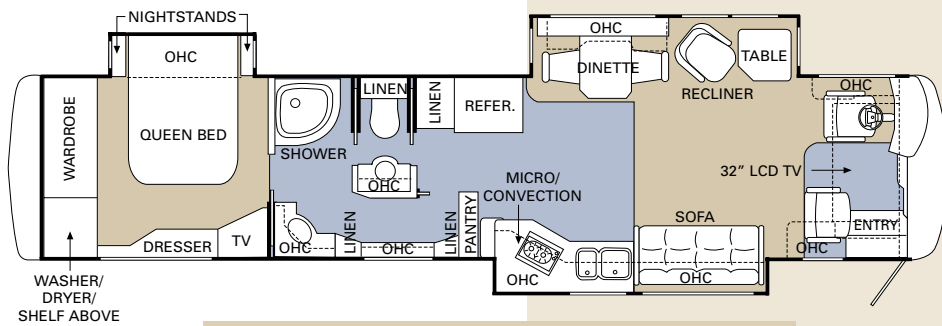
WILMINGTON FLOORPLAN OPTIONS



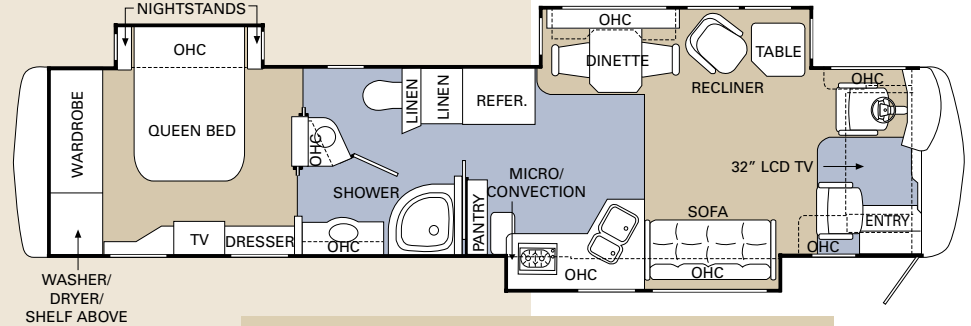
42 RICHMOND II



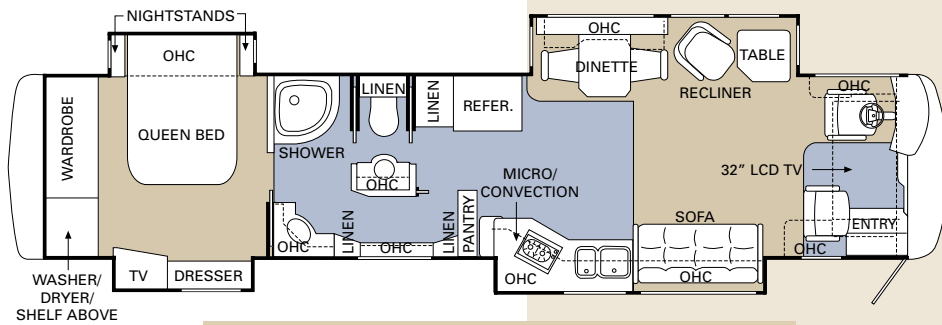
42 VICKSBURG II



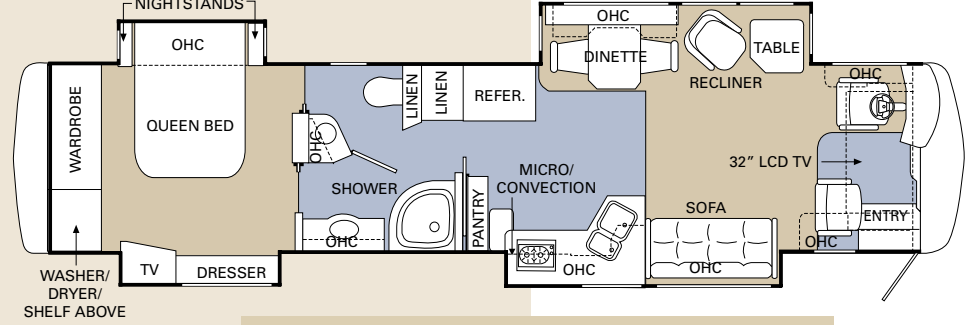
42 RICHMOND III



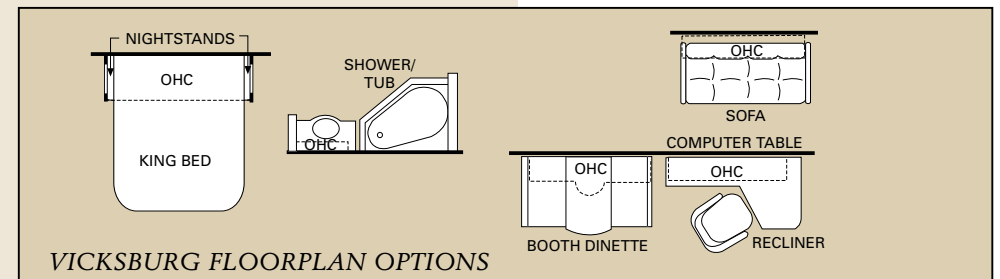
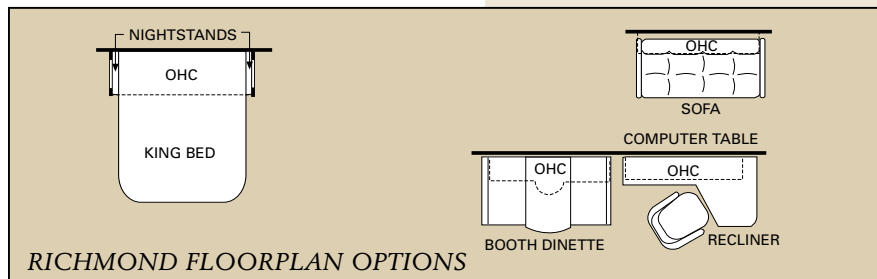
42 VICKSBURG III



42 RICHMOND IV



42 VICKSBURG IV



**WANT A CLOSER
LOOK? BE OUR GUEST
AND STAY AS LONG AS
YOU LIKE.**

VIRTUAL SHOWROOM

www.beavermotorcoaches.com

Be sure to visit our website for all the latest product news and updates. It's also a great place to get information on club events and a great way to contact us directly. And yes, while you're there, don't miss our virtual tour with panoramic views of the entire coach, close-ups of many exciting details and much more.



2006 PATRIOT WEBSITE LAUNCHES 04/05



VIDEO TOURS



PHOTO GALLERIES



COLORS & WOODS

HERE ARE SOME THINGS YOU CAN COUNT ON.

Talk to Beaver owners, and they'll tell you the day you drive away in your new coach is the beginning of a lasting relationship. That's because personalized owner care is something we stake our reputation on, year after year. Wherever your travels



lead, you can count on us to be only a phone call away. Our staff is available 24/7/365 to help you with virtually any situation that may arise — with troubleshooting, operational instruction or facilitating repairs at the nearest of our 350 nationwide service centers. In addition, you'll be enrolled in our Owner Advantage Roadside Assistance Program free of charge for your first year of ownership — providing additional emergency assistance, including towing, tire repairs and many more services around the clock. In short, when you purchase an RV from Monaco Coach Corporation, you get a wider array of benefits than any other manufacturer can offer. From our industry-leading Roadmaster chassis to the remarkable White Glove factory inspection program. Want to see it all for yourself? Simply call 1-800-634-0855 or 1-800-650-7337 to arrange a tour of one of our state-of-the-art production facilities in Oregon or Indiana.



WARRANTIES

12 month/24,000 mile

basic limited warranty

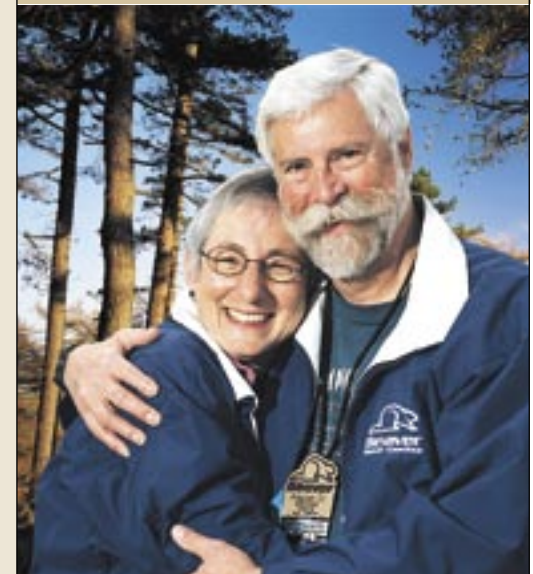
5 year/50,000 mile

limited warranty on aluminum or steel frame structure of sidewall, roof, front and rear cap

3 year/36,000 mile

limited warranty on Roadmaster chassis

Applies to certain models. See owner's manual for complete details.



OWNER ADVANTAGE ROADSIDE ASSISTANCE PROGRAM

At no charge to you in your first year of ownership, we offer an extensive support program that provides complete roadside assistance and special motor club benefits that follow you wherever your travels take you. This coverage also includes one additional family vehicle at no extra charge! Highlights include towing, tire repairs, fuel delivery, lock-out service, service appointment assistance, trip interruption coverage and much more.



BODY CONSTRUCTION			OPTIONS
FEATURES	<div><div>› Heavy-Duty Steel Superstructure with Steel Cage Cockpit Construction</div><div>› Seamless One-Piece Molded Crowned Fiberglass Roof</div><div>› All-Season Foam Insulated Roof</div><div>› Laminated Gel Coat Fiberglass Sidewalls</div><div>› Five-Layer Flooring with Two Layers of OSB Flooring</div><div>› Deluxe Full-Body Paint</div></div> <div><div>› One-Piece Windshield</div><div>› Triple Head Power Controlled Heated Chrome Exterior Mirrors with Turn Indicator Lights</div><div>› Daytime Running Lights</div><div>› Halogen Driving Lights</div><div>› Recessed Side Docking Lights</div><div>› Roof-Mounted Dual Trumpet Air Horns</div><div>› Insulated Aluminum Baggage Doors with Power Locks</div></div> <div><div>› Lined Storage Compartments</div><div>› Interlocking Aluminum Framed Slide-Out Houses</div><div>› Interior Paneling with 1 1/2" Insulation</div><div>› Storage Bay Slide-Out Tray (One Side)</div><div>› Rear Ladder</div><div>› Full-Length "Beaver" Mud Flap</div></div>		<div><div>› 3M® Film Front Mask</div><div>› One Manual Storage Bay Slide-Out Storage Tray (One Side)</div><div>› One Manual Storage Bay Slide-Out Storage Tray (Full Pass-Through)</div><div>› Exterior Sunscreens</div></div>
	CHASSIS/ENGINE/SUSPENSION		
FEATURES	<div><div>› Roadmaster S-Series Semi-Monocoque Chassis</div><div>› CAT® 400 HP C-9 with Allison® 3000 MH 6-Speed Transmission with Electronic Shifter</div><div>› Torque [@ 1,400 RPMs]: 1,100 lbs./ft. Max.</div><div>› Engine Displacement: 540 Cu. In./8.8L</div><div>› Dual Fuel Fill</div><div>› 200 Amp Alternator</div></div> <div><div>› Rear Axle Ratio: 4.33:1</div><div>› Tires: 295/80R/22.5</div><div>› Polished Aluminum Wheels</div><div>› Full-Cushion Air Glide Suspension with Ten Outboard Mounted Air Bags and Ten Shock Absorbers</div><div>› Automatic Traction Control</div><div>› Air Disc Brake System with ABS</div></div> <div><div>› Tag Axle with Anti-Lock Braking System</div><div>› Auto Slack Adusters on Brakes</div><div>› Pac Brake</div><div>› Hydraulic Leveling System</div><div>› 10,000 Lb. Hitch Receiver and 7/4-Way Trailer Plug</div></div>		<div><div>› Dual Leveling System (Air/Hydraulic)</div><div>› Air Leveling</div></div>
	COCKPIT		
FEATURES	<div><div>› Fiberglass Automotive Dash with Bird's-Eye Burl Instrumentation Panel, Tan Gauges with Black Lettering and Gun Metal Bezels</div><div>› In-Dash AM/FM Stereo with Multi-Disc CD Changer</div><div>› Rear Vision System with Color Monitor</div><div>› Aladdin™ Video Coach Systems Monitor with Integrated Compass and Temperature Gauge</div></div> <div><div>› CB Radio Prep</div><div>› Manual Privacy Drapes</div><div>› Power Sunvisors with Driver and Passenger Switch</div><div>› Adjustable Accelerator and Brake Pedals</div><div>› Black VIP Lighted Smartwheel® with Controls for Windshield Wipers, ICC and Cruise Control</div><div>› Audible Turn Signals</div></div> <div><div>› OptimaLeather™ 6-Way Power Pilot and Co-Pilot Seats with Power Footrest on Co-Pilot Seat</div><div>› 12V and 110V Outlet and Phone Jack in Dash Area</div><div>› Carpet, Pilot and Co-Pilot Floor mats</div></div>		<div><div>› Extra-Wide Co-Pilot Seat with Power Footrest</div><div>› Power Privacy Cab Drapes</div><div>› CB Radio with Antenna</div><div>› GPS Navigation System with Touchscreen</div><div>› OnStar® Mobile Assistance (Requires Subscription)</div><div>› Sirius Satellite Stereo (Requires Subscription)</div></div>
	APPLIANCES AND ACCESSORIES		OPTIONS
FEATURES	<div><div>› Four-Door Refrigerator with Ice Maker and Raised Panel Doors</div><div>› Recessed High-Output 2-Burner Cooktop</div><div>› Spacesaver Convection Microwave with Touch Control</div><div>› Manual TV Antenna</div><div>› Prep for Satellite Receiver</div></div> <div><div>› 32" LCD TV with Remote in Living Area</div><div>› 20" Flatscreen Color TV with Remote Control in Bedroom</div><div>› Home Theater System in Living Area</div><div>› Bedroom VCR/DVD Combo</div><div>› Combination Washer/Dryer Prep</div></div> <div><div>› Combination Washer/Dryer</div><div>› 37" LCD TV in Living Area Ceiling</div><div>› 20" LCD TV with Remote Control in Bedroom</div><div>› Universal Remote System</div><div>› Stainless Steel Refrigerator</div><div>› Stainless Steel Microwave</div></div>		<div><div>› Fully Automatic Digital Satellite System with Receiver in Living Area and Bedroom</div><div>› Fully Automatic In-Motion Digital Satellite System with Receiver in Living Area and Bedroom</div></div>

	INTERIOR		OPTIONS	
FEATURES	<div><div><div>› Gloss Finish Cabinetry</div><div>› Lined Cabinet Shelves</div><div>› Dinette Wall Cabinet with Solid Surface Top</div><div>› Built-In Storage Area for Kitchen Countertop Covers</div><div>› Bedroom Dresser</div><div>› Low-Friction Roller Drawer Guides</div><div>› Vinyl Ceiling with Wood Design</div><div>› Solid Surface Countertops Throughout</div><div>› Integrated Solid Surface Sinks in Vanity and Galley</div><div>› Solid Surface and Tile Galley Backsplash</div><div>› Tile, Corian® and Mirror Vanity Backsplash</div><div>› Day/Night Shades Throughout, with Blackout Shades in Bedroom</div></div><div><div>› Mini Blinds in Kitchen and Bathroom</div><div>› Vinyl Wallpaper with Chair Rail in Living Area</div><div>› Cutting Boards in Kitchen</div><div>› Textured Carpet in Living Area and Throughout</div><div>› Ceramic Tile in Entry, Kitchen and Bath Area</div><div>› Ceramic Tile "Border" Accent in Kitchen</div><div>› Bedspread with Pillows</div><div>› Nightstands with Solid Surface Countertops</div><div>› Decorative Hardware Throughout</div><div>› Large Pot and Pan Drawer in Kitchen Area</div><div>› Decorative Hardwood Slide-Out Fascia Trim</div></div></div>		<div><div><div>› Interior Decors: Tropicana, Briarcliffe, Desert Sunset and Alpaca II</div><div>› Paloma Picasso Decor: Birds of Paradise with Tile Aisle from Entry to Kitchen</div><div>› Gloss Finish Cabinetry Choices:<div><div>– Cherry and Maple</div><div>– Maple Burl Accent Cabinet Door Inserts with Cherry Cabinetry</div><div>– Mappa Burl Accent Cabinet Door Inserts with Cherry and Maple Cabinetry</div><div>– Makori Accent Cabinet Door Inserts with Cherry Cabinetry</div><div>– Bird's-Eye Maple Accent Cabinet Door Inserts with Maple Cabinetry</div></div></div></div><div><div>› Manual Roman Shades</div><div>› Sculptured Carpet in Living Area</div></div></div>	
	FURNITURE		OPTIONS	
FEATURES	<div><div><div>› Queen Bed</div><div>› Curbside: Sleeper Sofa with Drawer</div><div>› Roadside: OptimaLeather™ Euro-Recliner with Ottoman</div><div>› Solid Surface Fixed Living Area Table</div></div><div><div>› Side-Slide, Solid Surface Fixed Dinette Table with Two Freestanding Dinette Chairs and Two Folding Chairs</div></div></div>		<div><div><div>› King Bed</div><div>› Roadside: OptimaLeather™ Recliner</div><div>› Roadside: OptimaLeather™ Sofa with Drawer</div><div>› OptimaLeather™ L-Sofa with Drawer</div><div>› OptimaLeather™ Sofa with Drawer</div><div>› OptimaLeather™ Hide-a-Bed with Air Mattress</div></div><div><div>› Fabric Hide-a-Bed with Air Mattress</div><div>› Roadside: Wraparound Computer Table (Requires Recliner)</div><div>› Booth Dinette</div><div>› Kitchen Island (40 Wilmington II, III, IV)</div></div></div>	
	ELECTRICAL SYSTEMS AND LIGHTS		OPTIONS	
FEATURES	<div><div><div>› 50 Amp 120/240V Distribution Panel and Power Cord with Quick Disconnect</div><div>› Power Cord Reel</div><div>› Onan® 10.0 kW Quiet Diesel Generator on Power Slide-Out Tray with Auxiliary Start Switch</div><div>› 2,800 watt Pure Sine Wave Inverter with Auto Gen Start and Auto Temp Start</div><div>› Computer Hook-Up with Phone Jack at Dinette Area and Dash</div><div>› Decorative Lighting in Bedroom and Living Area</div><div>› Pilot/Co-Pilot Reading Lights</div><div>› Cosmetic Vanity Light</div></div><div><div>› Adjustable Bedroom Overhead Lights with Switches above Bed</div><div>› Recessed Halogen Lighting under Living Room and Dinette Overhead</div><div>› Halogen Lighting in Ceiling Throughout</div><div>› Fluorescent Light in Bath Area</div><div>› 120V Outlet in Private Lavatory</div><div>› 120V Outlet in Bed Base</div><div>› 120V Receptacle in Outside Storage Compartment</div><div>› Porch Light</div><div>› Doorbell</div></div></div>		<div><div><div>› Lighted Exterior Storage Compartments</div><div>› Four 6V Deep Cycle Coach Batteries</div><div>› Two 12V Deep Cycle Chassis Batteries</div><div>› Surge Protector</div><div>› Multiplex 12V Wiring Throughout Interior</div><div>› Locking Battery Disconnect Switch inside Coach</div><div>› Battery Disconnect Switch in Battery Compartment</div><div>› Solar Panel with Regulator (100 Watt)</div></div><div><div>› All Electric Coach: 5 Glass Matt Batteries, 270 Amp Alternator, Residential Refrigerator and Princess Two-Burner Cooktop</div></div></div>	

	PLUMBING AND LP SYSTEMS			OPTIONS
FEATURES	<ul style="list-style-type: none">› Central Water Filtration System in Service Bay› Manifold Water Control System› Insulated Systems Compartment with Easy Access to Hook-Ups› Water Pump Switches in Galley, Bath and Water Bay	<ul style="list-style-type: none">› China Toilet› Granicoat Shower with Shelf for Soap and Shampoo› Black and Gray Tank Flush› Water Sprayer in Outside Bay› Power Water Hose Reel	<ul style="list-style-type: none">› One Touch Pullout Faucet	<ul style="list-style-type: none">› Manual Waste Master Drain System› Electronic Automatic Winterization› Bathtub (N/A: 42 Richmond II, III, IV)
	HEATING, VENTS AND AIR CONDITIONING			OPTIONS
FEATURES	<ul style="list-style-type: none">› Aqua-Hot® Heating System› Two Low-Profile Ducted 15,000 BTU Roof Air Conditioners with Heat Pumps (40 Lexington II, III, IV; 40 Wilmington II, III, IV)	<ul style="list-style-type: none">› Three Low-Profile Ducted 15,000 BTU Roof Air Conditioners with Heat Pumps (42 Richmond II, III, IV; 42 Vicksburg II, III, IV)› Electronic AC/Heat Climate Control System	<ul style="list-style-type: none">› Dash Heating and Air Conditioner System with Defroster› 12V Attic Fan with Sensor and Wall Switch in Kitchen, Bath and Vanity Area	<ul style="list-style-type: none">› Two Low-Profile Baseboard Heaters
	WINDOWS, DOORS AND AWNINGS			OPTIONS
FEATURES	<ul style="list-style-type: none">› Flush Mount Radius Dual Pane Safety Glass Dark Tinted Windows› Front Entry Door with Air Seal and Removable Top Screen› Automatic Front Door Awning	<ul style="list-style-type: none">› Keyless Remote Entry System with Pocket Remote› Tinted Skylight in Bathroom› Topper Slide-Out Awnings	<ul style="list-style-type: none">› Window Awnings with Color-Coordinated Hardware (N/A with Passenger Side Front Slide-Out Windows)› Automatic Patio Awning with Color-Coordinated Hardware	<ul style="list-style-type: none">› Girard® Automatic Patio Awning Package Includes: Slide-Out Topper Awnings, Patio Awning, Entry Door Awning and Window Awnings
	SAFETY			OPTIONS
FEATURES	<ul style="list-style-type: none">› Back-Up Alarm› Fire Extinguisher› Deadbolt Lock on Entrance Door› Lighted Interior and Exterior Grab Handles	<ul style="list-style-type: none">› 120V GFI Protected Circuit (Kitchen, Bath, Exterior)› LP Gas Detector› Smoke Detector› Carbon Monoxide Detector	<ul style="list-style-type: none">› Integrated Pilot and Co-Pilot Three-Point Seat Belts› Third Brake Safety Light› Egress Window	<ul style="list-style-type: none">› Security Safe› Deluxe Security System
	PATRIOT “THUNDER PACKAGE”			
STANDARD & OPTIONAL FEATURES	<div>Body Construction Standard Features</div> <ul style="list-style-type: none">› Deluxe Full-Body Paint with Thunder Logos Painted on Front and Rear Caps <div>Body Construction Options</div> <ul style="list-style-type: none">› Electric Slide-Out Storage Tray (Full Pass-Through) <div>Chassis/Engine/Suspension Standard Features</div> <ul style="list-style-type: none">› CAT® 525 HP C-13 with Allison® 4000 MH 6-Speed World Transmission with Electronic Shifter› Torque @ 1,200 RPMs: 1,650 lbs./ft. Max.› Engine Displacement: 763 Cu. In. /12.5L	<div>Cockpit Standard Features</div> <ul style="list-style-type: none">› Fiberglass Automotive Dash with Beige Grid IP, Tan Gauges with Black Lettering and Gun Metal Bezels› Two-Tone Leather VIP Lighted Smartwheel® with Controls for Windshield Wipers, ICC and Cruise Control› OptimaLeather™ 6-Way Power Pilot and Co-Pilot Seats with Adjustable Headrests, Electric Lumbar and Heat, Colored Pleats and Thunder Logo <div>Cockpit Options</div> <ul style="list-style-type: none">› SEE-Vision Coach Monitoring System	<div>Appliances and Accessories Standard Features</div> <ul style="list-style-type: none">› Universal Remote System <div>Appliances and Accessories Options</div> <ul style="list-style-type: none">› Residential Refrigerator› Residential Stainless Steel Refrigerator <div>Interior Standard Features</div> <ul style="list-style-type: none">› Tapered Corian® Splash Guard <div>Furniture Standard Features</div> <ul style="list-style-type: none">› Curbside: Sleeper Sofa with Drawer and Footrest	<div>Furniture Options</div> <ul style="list-style-type: none">› Queen Air Mattress with Remote› King Air Mattress with Remote <div>Plumbing and LP Systems Standard Features</div> <ul style="list-style-type: none">› Solid Surface Shower with Corian® Shower Caddy <div>Safety Options</div> <ul style="list-style-type: none">› Collision Avoidance System

WEIGHTS	40 Lexington II	40 Lexington III	40 Lexington IV	40 Wilmington II	40 Wilmington III	40 Wilmington IV	42 Richmond II	42 Richmond III	42 Richmond IV	42 Vicksburg II	42 Vicksburg III	42 Vicksburg IV
Gross Vehicle Weight Rating (Lbs.)	48,160	48,160	48,160	48,160	48,160	48,160	48,160	48,160	48,160	48,160	48,160	48,160
Gross Combined Weight Rating ¹ (Lbs.)	58,160	58,160	58,160	58,160	58,160	58,160	58,160	58,160	58,160	58,160	58,160	58,160
Front Gross Axle Weight Rating (Lbs.)	15,160	15,160	15,160	15,160	15,160	15,160	15,160	15,160	15,160	15,160	15,160	15,160
Rear Gross Axle Weight Rating (Lbs.)	23,000	23,000	23,000	23,000	23,000	23,000	23,000	23,000	23,000	23,000	23,000	23,000
Tag Gross Axle Weight Rating (Lbs.)	10,000	10,000	10,000	10,000	10,000	10,000	10,000	10,000	10,000	10,000	10,000	10,000
MEASUREMENTS	40 Lexington II	40 Lexington III	40 Lexington IV	40 Wilmington II	40 Wilmington III	40 Wilmington IV	42 Richmond II	42 Richmond III	42 Richmond IV	42 Vicksburg II	42 Vicksburg III	42 Vicksburg IV
Wheelbase	250 3/4"	250 3/4"	250 3/4"	250 3/4"	250 3/4"	TBD	TBD	TBD	TBD	TBD	TBD	TBD
Overall Length	41' 7"	41' 7"	41' 7"	41' 7"	41' 7"	TBD	TBD	TBD	TBD	TBD	TBD	TBD
Overall Height ²	TBD	TBD	TBD	TBD	TBD	TBD	TBD	TBD	TBD	TBD	TBD	TBD
Exterior Width	100.5"	100.5"	100.5"	100.5"	100.5"	100.5"	100.5"	100.5"	100.5"	100.5"	100.5"	100.5"
Interior Height (carpet to vinyl)	81"	81"	81"	81"	81"	81"	81"	81"	81"	81"	81"	81"
TANK CAPACITIES	40 Lexington II	40 Lexington III	40 Lexington IV	40 Wilmington II	40 Wilmington III	40 Wilmington IV	42 Richmond II	42 Richmond III	42 Richmond IV	42 Vicksburg II	42 Vicksburg III	42 Vicksburg IV
Gray Tank (Gal.)	56	56	56	56	56	56	56	56	56	56	56	56
Black Tank (Gal.)	56	56	56	56	56	56	56	56	56	56	56	56
Fresh Tank (Gal.)	100	100	100	100	100	100	100	100	100	100	100	100
Fuel Tank (Gal.)	150	150	150	150	150	150	150	150	150	150	150	150
LP Tank ³ (Gal.)	29	29	29	29	29	29	29	29	29	29	29	29

¹ Towing capacity is limited by GCWR; your vehicle's towing capacity is the difference between the GCWR and the actual vehicle weight, including all water, fuel, passengers and cargo. Your towed vehicle should be equipped with auxiliary brakes if the weight of the towed vehicle exceeds 1,000 lbs. Consult your Owner's Manual for further towing information.

² Height measurements include roof satellite.

³ Actual filled LP capacity is 80% of listing due to safety shut-off required on tank.

All tank capacities are estimated based upon calculations provided by the tank manufacturers and represent approximate capacities. The actual "usable capacity" may be greater or less than the estimated capacities based upon fabrication and installation of the tanks.

The actual overall length of the recreational vehicle may differ from that indicated in the brochure due to variances in the manufacturing process and/or installed components. The actual length may be greater or less than that indicated.

Due to the large variety of options and floorplan arrangements available to our customers, actual weights for each unit may differ. Beaver Motor Coaches provides a weight sticker on each unit we produce, which includes that unit's tank capacities and approximate weight. Consult your local Beaver Motor Coaches dealer for unit availability and further information. The information printed in this brochure reflects product design, fabrication, and component parts at the date of printing. The manufacturer reserves the right, at any time, to make changes in product design, material or component specifications as its sole option, without notice. This includes the substitution of components of a different brand or trade name, which will result in comparable performance.

Component part and appliance manufacturers issue limited warranties covering those portions of the recreational vehicle not covered by the Limited Warranties issued by Monaco Coach Corporation. To learn which specific component parts and appliances are excluded from the Limited Warranties issued by Monaco Coach Corporation, please contact your selling dealership or Monaco Coach Corporation directly, or review the warranty packet inside the recreational vehicle. All information printed in this brochure is subject to change after the date of printing. Some features shown or mentioned in this brochure are optional and may only be available in selected floorplans. Photographs may show props or decorations that are not standard equipment on Beaver Motor Coach models. Beaver Motor Coaches, the Beaver logo and its design, are registered trademarks. All other products and company names are trademarks and/or registered trademarks of their respective holders.



BEAVER® 2006 PATRIOT®

THE BEAVER LINE OF MOTORCOACHES:
SANTIAM® • MONTEREY • PATRIOT® • MARQUIS®



One coach at a time. Yours.™

BEAVER MOTOR COACH

PO Box 5639 • 20545 Murray Road Bend, OR 97701

www.beavermotorcoaches.com

Daily factory tours

(800) 634-0855

WHEN A COMPANY TREATS YOU THIS WELL, YOU CAN'T HELP BEING LOYAL.

Meet long-time RV owners, Jack and Sheron Brown. They spent three years researching diesel motorhomes before the day they stepped into a 2003 Patriot with the Thunder Package and were sold on the spot. They were both wowed by the stunning interior that made other motorhomes look "plain vanilla." Jack fell in love with the big Caterpillar® engine that he says "has yet to meet a mountain it couldn't climb," while Sheron appreciates the livable layout and plentiful storage space.

Together, they insist that the highlight of owning a Patriot is the personal treatment they receive from Beaver's customer service and tech support teams. "They're totally committed to resolving issues and making things right," says Jack. "And that's the way I believe in doing business."

In fact, the Browns are taking possession of a brand new 2005 Patriot Thunder with quad slide-outs and a 525 HP engine. They know they'll continue to turn heads wherever they go, and that's fine with them. Because, like they both said, "We're Beaver owners for life."



MONACO COACH CORPORATION

Monaco is traded on the New York Stock Exchange under the listing MNC

© 2005 Monaco Coach Corporation Litho in USA

0305 NPN:BROBPATR

