

DOLPHIN

STRETCH 500

The Ultimate in Micro-Mini Motor Home Luxury

In this day of imitations and copies, there's one thing that can't be substituted. Experience. For many years now, Dolphin Camper Company has established itself as the trendsetter in the industry. When everyone else was still trying to figure out a way to make those large gas-guzzling motorhomes economical, Dolphin was heading in the direction that was inevitable. The Micro-Mini.

Now, several years later, the Micro-Mini has established itself as a popular alternative for the RV'er. Gas prices are higher, and we find you, the public, still want the freedom and independence of getting away without the unreasonable sacrifices. This is why we've built the Stretch 500.

From the first time you step into this new breed of motorhome, you'll see that it all makes sense. You'll marvel at the interior richness, spaciousness, and ceiling height that you would normally associate with the larger motorhomes. A low profile outward appearance cuts down wind



resistance adding to the already economical powerplant.

Time for personal relaxation and entertainment is at a premium these days, therefore, every dollar you spend must be worthwhile. The Stretch 500 is a way to stretch your investment by going with a quality, proven product. When our name goes on, we're putting our reputation on the line.

1979

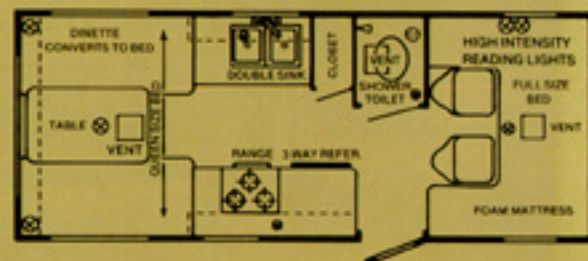


STRETCH 500

19½ FEET
OF SOLID COMFORT

Chassis Specifications

4600 lbs. Gross Vehicle Weight •
Toyota Chassis w/132" Wheelbase •
2189 CU. Engine • 4 speed transmis-
sion • Heavy Duty overload springs •
Gabriel air shocks • Bucket seats with
custom upholstery • Custom door
panels • Custom paint striping •
Custom wheel covers • Custom mir-
rors • Spare tire & wheel • Hose carry-
ing rear bumper • Tires 7.50 x 14 x 6
ply front, L 60 x 14 rear



Motor Home Section

- Large Radius tinted sliding windows •
- Carpeting throughout • Custom drapes & upholstery •
- Shower • Marine toilet • 3 cu. ft. 3 way refr. •
- 3 burner range w/range hood • Hot water heater •
- Stainless steel sink, double • Demand water system •
- 110 Volt converter w/25' power cord •
- 20 gallon fresh water tank • Dual waste holding tanks •
- 5 gallon propane tank w/sight gauge •
- City water hookup • Lots of drawers •
- Bullet

- reading lights in Cabover •
- Low voltage clock •
- Reading lights under rear overhead •
- Fiberglass cab collar •
- 3 roof vents •
- Separate screen door •
- Porch light •
- Drain hose & fire extinguisher

Optional Equipment

- Oven w/four burner range •
- 4 cu. ft. 3 way refr. •
- Dual battery •
- 10,000 BTU Heater •
- Automotive Air •
- Roof air •
- Dual wheels

Due to continual product improvement, we reserve the right to change materials, colors, specifications, and prices at any time without notification.

AUTHORIZED DEALER

 **DOLPHIN**
DOLPHIN CAMPER CO.

9790 Glenoaks Blvd., Sun Valley, Ca. 91352
(213) 768-5610 (213) 875-0398