



TROPICAL

1997 MOTORHOMES

For Those Who Appreciate The Finer Things In Life

Nropi-Cal full basement motorhomes are National RV's finest, which is really saying something. For over three decades, we've catered to travelers with innovative designs, extensive amenities, and advanced features that are the envy of the industry.

Our latest Tropi-Cals are guaranteed to delight you all. Tall folks like the extra 3" of headroom. The furniture has been made more comfortable for the ladies. And everyone appreciates the extra light and spaciousness achieved by increasing window height 3".

Inside and out, amenities abound in each and every Tropi-Cal model. For instance, stylish



exteriors feature a bus-type front end with full fiberglass cap and single-piece high-gloss fiberglass Mende Board sidewalls. Storage is close to cavernous. Sculptured fiberglass baggage doors reveal lots of outside storage with several easily accessed illuminated compartments.

In the Tropi-Cal tradition, we've also incorporated elegant master suites, posh living rooms, gourmet galleys, inviting baths, and exceptional storage space. Check the extensive feature list for an idea of all the standard amenities. Better yet, visit your Tropi-Cal dealer to experience National RV's quality and innovation first-hand.

Tropi-Cal Slide-Outs Open Up New Possibilities

Tropi-Cal slide-out models prove that bigger is indeed better. Within minutes after you stop for the night, you instantly add 34.8 square feet of space right where you need it most. Inside the extra-spacious living room is an exceptionally comfortable sofa/sleeper combination next to an inviting dinette.

Tropi-Cal boasts the most elegant and richly appointed interiors of any



National RV motorhome. There's plenty of cozy, comfortable seating to inspire pleasant conversations. Adding to your entertainment alternatives is an overhead-mounted 19" color television.

Spacious interiors gain an extra measure of openness from large windows during the day and fluorescent lighting in the evenings.



Model 235S

The Inside Story On Luxury


Tropi-Cal's U-shaped and L-shaped galleys are always popular places to congregate. Each includes an attractive and practical china cabinet and flooring upgrades that feature Futura series non-wax high gloss linoleum by Congoleum. Enhancements are found throughout every coach, including day/night shades, a wide side entry door, welcoming porch light and convenient exterior grab rail.



Expansive Master Suite

By placing an island bed against the sidewall in Model 235, we've opened up more storage possibilities. Fact is, Tropi-Cal's sliding glass door wardrobe runs the full width of your motorhome. Our designers have also incorporated a large mirror to contribute to the feeling of spaciousness. And so you can lounge in true comfort, Tropi-Cal's queen bed measures a full 60" x 80".

Feel Pampered On And Off The Road

 When you're traveling, every little comfort and convenience becomes very important. We know because we're long-time RV enthusiasts ourselves. What's more, National RV operates a toll-free customer service hotline, and we are always eager to listen to what you have to say.

As soon as we heard that people want extra-comfortable seating for the driver and co-pilot, we responded with upgraded chairs to make your time on the road more pleasant. Because of customer feedback, we've extended our wheel bases to provide a more stable ride and improved steering control. Our conversations have also shown that you may have missed certain equipment and amenities that you are used to having in your home. Rest assured, we've added the features you have requested – pantry storage areas, laundry baskets, hair dryer, waste can, and a Dust Buster.

So come in and feel completely at home in your new Tropi-Cal! We've even made the entry way more house-like, thanks to a new wider step well with slip-resistant rubber treads. Go ahead, stretch out and relax in the living room. What a great place to take it easy after another wonderful day on the road!



Elegant fabrics impart an inviting designer touch to every Tropi-Cal.



Make Yourself at Home

Models 234 and 236 are typical of Tropi-Cal's incredibly spacious floor plans. Standard seating arrangements for both include a popular straight couch configuration, teamed with a deluxe recliner. Also, Model 236 can be specified with an optional L-shaped couch or sofa/chair combination. With every version, an upgraded lighting system brightens up the living areas, while a ducted floor heating system is another warm addition.



Get Everything You Want In A Motorhome...

Choice of Galleys

Tropi-Cal lets you pick your preference - the L-shaped galley shown here, or the U-shaped version shown on a previous page. Designed to delight any cook and every diner, both offer the practical beauty of a Corian counter with recessed cook top. Another nice feature, National RV's clever counter top (optional) folds down to conceal the range when it's not in use.

Be sure to check the fit and finish on our beautiful dark walnut raised panel cabinetry. Tropi-Cal is the only motorhome in this price range with this rich finish. You'll really appreciate National RV quality - and the way we've built in more storage space than ever before. Innovations and enhancements abound! Even the kitchen sink has been upgraded to an oversize double porcelain unit with convenient center faucet and pull-out strainer.

Large Garden Bath

Tropi-Cal's interior designers have really outdone themselves in this elegant bath, using a domed skylight to really open up the room. Handsome gold tone fixtures and trim on the glass-enclosed shower provide attractive accents. The sink has been enlarged for your convenience, and we've added a hair dryer as well. Also standard is a quality porcelain toilet with spray attachment.



Model 234



Model 236

Specifications

AUTOMOTIVE FEATURES

- Chevrolet 454 CID - 7.4 Liter, V-8 EFI
- L29 - 290 HP Vortec Engine
- Ford CID - 7.5 Liter V-8 EFI
- Engine Oil Cooler
- Transmission Oil Cooler
- Overdrive Automatic Transmission
- Power Steering/Brakes
- ABS Brakes (Chevrolet Only)
- Electric Fuel Pump
- Auxiliary Start System
- Alternator AMPS:
105 Amp Chevrolet
130 Amp Ford
- Radial Tires (7)
- Tilt Steering Wheel
- Cruise Control
- In-Dash Heat & Air Conditioning
- Full Panoramic Wrap-Around Tinted Windshield
- Panoraphic Windshield Wipers w/Intermittent Speed Control
- Map Light
- Cigarette Lighter
- Reclining Bucket Seats w/Swivel
- Protector Sun Visors
- AM/FM Auto Reverse Stereo Cassette
- Wheel Covers
- Deluxe Power Mirrors w/Heat
- Class 3 Trailer Hitch
- Dash Fans

EXTERIOR FEATURES

- Full Fiberglass Front and Rear Caps
- High Gloss Mende Board Side Walls
- Insulated Fiberglass Baggage Doors
- Rubber Roof
- Brushed Stainless Steel Front Bumper
- Radius Windows
Sliders in Living Room
Jalousie in Bedroom/Galley
- Tinted Windows w/Screens

- Awning Rail
- Dead Bolt Lock
- Water Fill with Switch-Over Valve
- Lighted Cargo Bins
- Outside Porch Light
- Radius Entry Door
- Insulated Cargo Bin Floors
- Outside Shower
- Black Tank Flush System
- Rain Gutter with Drip Spouts
- Power Entry Step
- Roof Rack & Ladder
- Slideout Awning Cover (235)

INTERIOR FEATURES

- Porcelain Sink In Galley
- Recessed Fluorescent Ceiling Lights
- Walnut Raised Panel Cabinet Doors in Lounge
- Decorative Mirrored Doors in Lounge & Bedroom
- Dark Walnut Trim Throughout
- Deluxe Highline Carpet & Pad Throughout
- High Grade Vinyl Floor in Galley
- Pantry
- Sliding Privacy Door
- Built-In Waste Can
- Walnut Drawer Fronts
- Color Coordinated Mini Blinds w/ Designer Valances

Specifications / Dimensions / Capacities

DIMENSIONS	234 Ford	235 Ford	235 Chev	236 Ford
Overall Length	35' 9"	36'	36'	37'
Overall Height w/Air	11' 7"	11' 8"	11' 8"	11' 8"
Overall Width	8' 6"	8' 6"	8' 6"	8' 6"
Interior Height	6' 7"	6' 7"	6' 7"	6' 7"
Interior Width	8' 2"	8' 2"	8' 2"	8' 2"
CAPACITIES (Gallons)	234 Ford	235 Ford	235 Chev	236 Ford
Fresh Water	100	100	100	100
Hot Water	6	6	6	6
Waste Water Holding Tank	50	50	50	50
Gray Water Holding Tank	50	50	50	50
LP Gas Capacity	24	24	24	24
Fuel	75	75	80	75
CHASSIS	234 Ford	235 Ford	235 Chev	236 Ford
Wheel Base	228"	208"+43"	208"+43"	228"+43"
GCWR - lbs.	25,000	25,000	21,000	25,000
GVWR - lbs.	17,000	20,000	19,500	20,000
Unladen Weight - lbs.*	15,450	17,360	16,550	17,010
Payload - lbs	1,550	2,640	2,950	2,990

* Unladen weight includes full fuel, roof air conditioning, generator, and microwave. The 235 also includes jacks and camera.

Floor Plans

- Fabric Ceiling
- Color Coord. Bedspread, Shams & Pillows
- Skylight in Shower
- Single Lever Galley Faucet
- Fire Extinguisher
- Dinette Booth
- Recessed Cook Top
- Corian Galley Top & Sink Cover
- Day/Night Shade in Lounge area & Bedroom
- Drink Tray
- Deluxe Recliner/Rocker
- Porcelain Toilet w/ Spray
- 3-Burner Cook Top
- Power Range Hood w/Light
- Demand Water Pump
- Systems Monitor Panel to Measure Tanks, Battery & Propane
- Adjustable Reading Lamps
- Power Vent in Bath
- Cable TV Hookup
- 35,000 BTU Ducted Furnace

OPTIONAL FEATURES

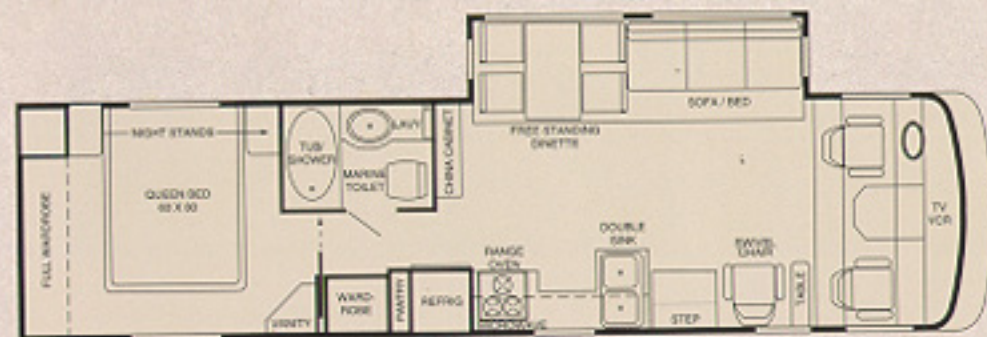
- Ice Maker for 8' Refrigerator
- Upgrade to 10' Double Door Refrigerator w/Ice Maker
- Thermostatically Controlled Exhaust Fan
- 21" LP Gas Oven
- VCR with Antenna Switch - 110 Only
- 13" TV in Bedroom
- Twin Beds (n/a on 235)
- Exterior Electric Horns
- Stainless Steel Wheel Liners
- A & E 20' 9000 Awning
- 6 Way Power Driver Seat
- Alarm System w/Remote
- Insulated Windows
- Privacy Decal in Shower
- CD Player
- Bedroom Stereo w/Clock Radio
- Washer/Dryer - 235 & 236
- Extra Wide Co-Pilot Chair
- Dinette Table and Four Chairs
- Counter Extension
- Canada - CSA Approval
- Back Up TV Camera - Std. 235
- Hydraulic Jacks - Std. 235

APPLIANCES & ELECTRICAL

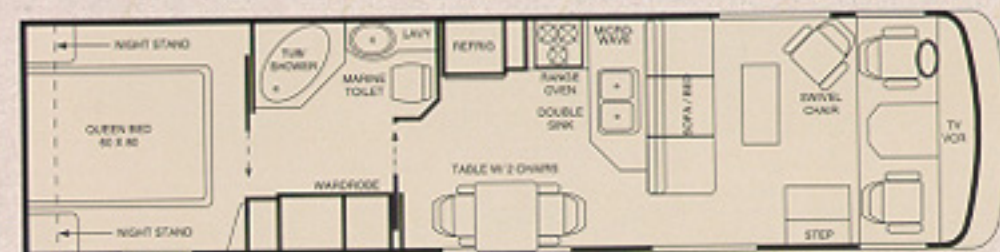
- 5.5 KW Generator
- Ducted Air - Duotherm 2 - 13,500 BTU
- Convection Microwave
- Double Door Domestic Refrigerator - 8'
- 6 Gallon DSI Hot Water Heater
- 19" TV w/Remote
- TV Antenna
- Coffee Maker
- LP/CO/Smoke Detectors
- 110 Amp Deep Cycle House Battery (2)
- Phone Jack
- Intellitec runs Two Roof Airsterms on 30 Amp Service
- Hair Dryer
- Dust Buster
- Battery Disconnect Switch
- TV Antenna w/Amplifier
- TV Signal Switching
- Water Filter
- Water Heater By-Pass
- GFI Protected Electric Circuit
- 120V/12V/ Power Converter Charger -55 Amp



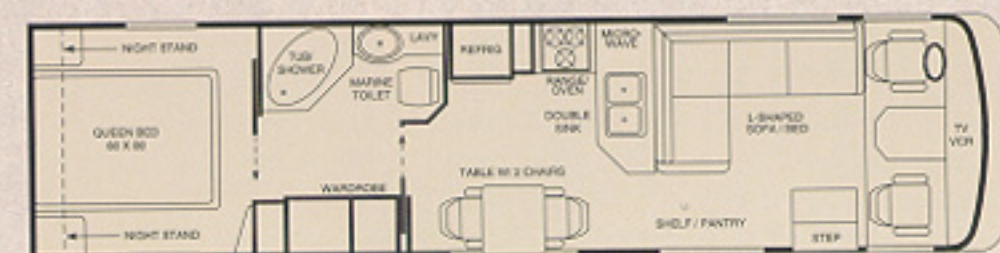
Model 234



Model 235 (Slide-Out)



Model 236



Model 236-L

Built Better By Design

From the moment we opened our doors in 1963, National RV began building a reputation for superior products. Because we know that there are no shortcuts to quality, we have always insisted on the most thorough engineering, the best materials, and the finest craftsmanship.



National RV's list of satisfied customers keeps growing, and so do our facilities. We've recently expanded for even more efficient production capabilities.



State-of-the-art fiberglass manufacturing holds to tight tolerances and achieves the highest levels of quality.



Extensive undercoating applied to each unit provides properly sealed compartments and enhances sound deadening.



Chassis construction incorporates a heavy galvanized sub-floor installed directly on the frame. Wood is never used.



Custom designed furniture receives its finishing touches in our factory to guarantee high levels of quality and comfort.



National RV's modern facilities are designed for smooth, efficient production every step of the way.



Each unit is thoroughly rain-tested before delivery. This important step helps assure a quality motorhome.

Quality Is Built Into Every Detail

Tropi-Cal's thoroughly insulated rubber roof assures your long-term comfort. Note also that our roofs have more steel cross members than most.



Check out Tropi-Cal's handsome high-gloss gel-coat walls and sleek fiberglass rear cap with built-in spare tire compartment.



24-Hour Toll-Free Help Line

As an original Tropi-Cal owner, you can call toll-free, anytime, for expert advice on any problem you might have. (Good for one year from date of purchase. Non-transferable program can be extended for a nominal fee.)



Tropi-Cal



National R.V., Inc.
3411 N. Perris Blvd., Perris CA 92571 • 909-943-6007