

# Tropi-Cat

T W O   T H O U S A N D   O N E



**NRV**  
LIVE  
NATIONAL R.V., INC.

Specifications • Floorplans

---

*The 2001 Tropi-Cal® continues the tradition of innovation and distinction you've come to expect from National RV. National RV's durability and attention to detail were never so evident. Appointed in the most luxurious interior designs available, Tropi-Cal® will keep you on the road in style for years of enjoyment. Featuring a rich walnut interior with Dupont Corian® countertops, the Tropi-Cal comes in a number of deluxe floorplans—including many double-slide models. Step up to a Tropi-Cal®...the sensible choice.*

---

Standard Features

PAGE

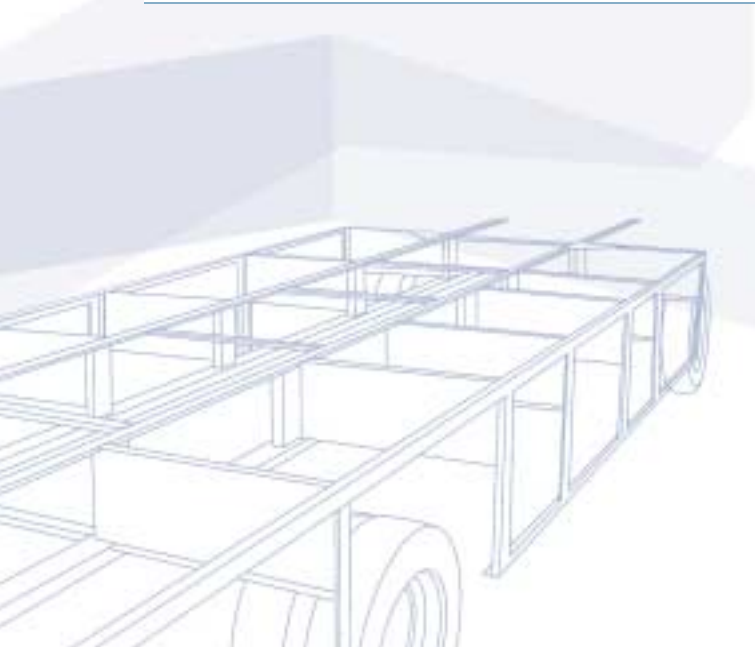
<b>2</b>	<b>Body Construction</b>
<b>2</b>	<b>Electrical Systems and Lights</b>
<b>3</b>	<b>Interiors</b>
<b>3</b>	<b>Cockpit Features</b>
<b>4</b>	<b>Chassis, Engine and Suspension</b>
<b>5</b>	<b>Appliances and Accessories</b>
<b>5</b>	<b>Heating, Vents and Air Conditioning</b>
<b>6</b>	<b>Windows, Doors and Awnings</b>
<b>6</b>	<b>Safety Features</b>
<b>6</b>	<b>Plumbing and LPG Systems</b>
<b>6</b>	Optional Features
<b>7</b>	Floorplans
<b>9</b>	Measurements

- DURAFRAME® Steel Sub Floor Construction
- Steel Framed Laminated Floor
- Steel Framed Crowned Fiberglass Laminated Roof
- Steel Framed Laminated Fiberglass High Gloss Walls
- Steel Framed Exterior Storage Compartments with Insulated Bottoms
- Front and Rear Molded Fiberglass Caps with Spare Tire in Rear Cap
- Full Panoramic Tinted Windshield
- Soft Fabric Ceiling Material
- Electric Slide-Out Room with Overhead Cabinets
- Custom Vinyl Exterior Graphics
- Lighted Storage Compartments and Service Area
- Insulated Fiberglass Storage Compartment Doors with Latches and Struts
- Integrated Fiberglass Rear Bumper
- Brushed Stainless Steel Front Bumper
- Deluxe Exterior Passenger Grab Handle
- Aluminum Rear Ladder
- Awning Rail (Rain Gutter with Drip Spouts)
- Automotive Undercoating As Required

• Body Construction

- 50 AMP Magnetek Power Converter
- 50 AMP 120V Distribution Panel and Cord
- Generac 5.5 Generator
- Two 6V Deep Cycle House Batteries
- Battery Disconnect Switch for House Batteries
- Patio Receptacle (120V)
- 12V Fluorescent Lights in Ceiling
- 12V Fluorescent Lights under Cabinets in Living Area
- Cosmetic Light in Bathroom
- Decorative Wall Lights in Bedroom

• Electrical System & Lights

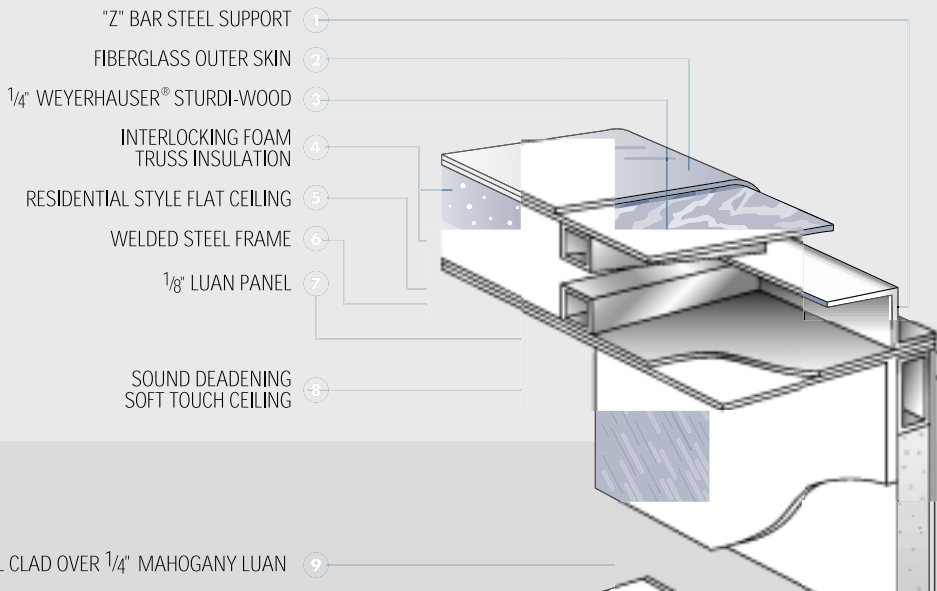


- Walnut Paneling and Doors
- Solid Walnut Raised Panel Cabinet Doors and Drawer Fronts
- Telestrut Hardware on Overhead Doors and Positive Catches on Others
- Ball Bearing Roller Drawer Guides
- Slide-Out Pantry (N/A with Side by Side Refrigerator )
- Corian® Kitchen Countertops with Flush Mount Stove Cover
- Corian® Countertop Extension
- Sink Cover (Wood Cutting Block)
- Porcelain Sink with Moen® Single Lever Faucet
- Kitchen Waste Basket
- Corian® Bathroom Lavy Top
- Full Length Beveled Glass Mirror
- Medicine Cabinet and Towel Bars in Bathroom
- Color Coordinated Bedspread, Pillows and Shams
- Radius Padded Headboard
- Queen Bed (Head-to-Rear) with Corian® Night Stands and Shirt Closets (6330, 6350 and 6351)
- Queen Bed (Head-to-Side) with Corian® Night Stands and Shirt Closets and Full Rear Closet (6332, 6352, 6370, 6371, 6372 and 6373)
- Bedroom Vanity Stool (6332, 6371 and 6373)
- Hide-A-Bed Sleeper Sofa
- Deluxe Rocker Recliner with Swivel Base (Opt. 6330 and 6350)
- Booth Dinette with Slide-Out Storage Drawers (N/A 6370 and 6371)
- Wall Mounted Table with Two Wooden and Two Folding Chairs (6370 and 6371)
- Deluxe Nylon Carpet and Pad in Living Area and Bedroom
- One Piece Designer Congoleum® Vinyl Floor in Kitchen and Bath
- Day/Night Shades with Designer Valances in Living Area and Bedroom
- Venetian Blinds and Valance in Kitchen

- AM/FM Cassette Stereo with Four Speakers
- Driver and Passenger Map Light (Dome Light)
- Custom Dash with Full Gauge Package
- Walnut Drink or Cup Tray
- Audible Turn Signals
- Pantographic Windshield Wipers
- Power Steering
- Cruise Control
- Tilt Steering Wheel
- Passenger Work Station
- Electric Automotive Horn
- Rear Vision System with Rear Microphone Built-In
- Overhead Dash Fans (2 Speed)
- Driver and Extra-Wide Passenger Recliner Seats
- Passenger Work Station with 12V / 120V Receptacle and Telephone Jack in Console
- 4-Point Hydraulic Leveling Jacks with Cockpit Mounted Control Pad
- Rosen Aviation Style Sun Visors
- Generator Hour Meter and Control Switch on Dash
- 12V Outlet On Dash (Cigar Lighter)
- Auxiliary Start Switch on Dash
- Power Heated Mirrors

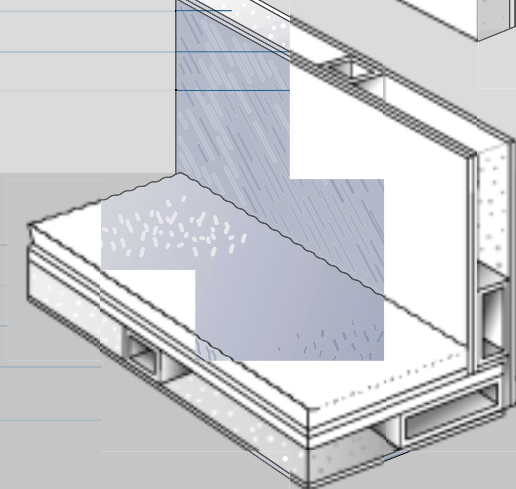
- Four Wheel Anti-Lock Disc Brakes
- Electronic Fuel Injection Gasoline Engine—Triton 6.8L V10 (310 HP)
- 415 Cubic Inch Displacement
- 4-Speed Automatic Transmission with Overdrive (4R100)
- 75 Gallon Fuel Tank Capacity
- 115 Amp Alternator
- Rear Axle Ratio: 5.38:1
- Front Axle Weight Capacity—7,000 lb.
- Rear Axle Weight Capacity—13,500 lb. (with Tag when Applicable)
- Stainless Steel Wheel Liners
- Radial Tires (Tire and Wheel Size— 245/70R x 19.5F)
- 5,000 lb. Hitch Receiver and Electrical Connector
- Spare Tire and Wheel

# Chassis, Engine and Suspension



- 2 LB. PRECISION FIT FOAM INSULATION 10
- WELDED STEEL FRAME 11
- HIGH-GLOSS "MENDE" FIBERGLASS OUTER SKIN 12

- QUALITY FLOOR COVERINGS 13
- 1/4" ACX PLYWOOD DECKING 14
- 3 LB. PRECISION FIT FOAM INSULATION 15
- WELDED STEEL FRAME CONSTRUCTION 16
- 1/8" MAHOGANY LUAN WITH VINYL TRUE GRIT BONDED UNDERSIDE SEAL 17



Wall  
Floor

- Home Theater Sound System
- 8 Cu. Ft. Double Door Refrigerator
- Coffee Maker
- Dust Buster Vacuum Cleaner
- Three-Burner Cook Top with Flush Mounted Corian® Range Cover
- Systems Monitor Panel

- Space Maker Convection Microwave Oven with Built in Fan and Light
- Cable TV Hook-Up and Telephone Jack
- TV Antenna and Booster
- Video Control Box
- 19" Color TV with Remote Control in Living Area

- VCR with Remote Control
- 13" Color TV with Remote Control in Bedroom (6330, 6350, 6351, 6352, 6370 and 6372)
- 19" Color TV with Remote Control in Bedroom (6332, 6371 and 6373)
- Wall Mounted Hair Dryer in Bathroom

• Appliances and Accessories

- Thermostatically Controlled Dual 13.5M BTU Ducted Roof A/Cs
- 35,000 BTU Electronic Ignition Furnace (6330, 6332, 6350 6352 and 6351)

- Dual Electronic Ignition Furnaces—35M and 20M BTUs ( 6370, 6371, 6372 and 6373)
- Attic Fan with Wall Thermostat and Rain Sensor

- 12V Roof Exhaust Fan in Bathroom
- Dash Automotive Heating and A/C System with Defroster
- Ducted Heating System

• Heating, Vents and Air Conditioning

Optional Features

- 8 Cu. Ft. Refrigerator with Icemaker
- Six-Way Power Driver's Seat
- 12 Cu. Ft. Side-By-Side Refrigerator with Icemaker
- Combination Washer/Dryer (N/A 6330)
- Washer/Dryer Prep (N/A 6330)
- 400 Watt Inverter
- 21" LPG Gas Oven
- CD Player (10 Disc)
- Bedroom Stereo with Clock Radio
- 11 Ft. Slide-Out Window Awning (6330, 6332, 6350, 6351, 6352 6372 and 6373)
- 66" Kitchen Slide-Out Window Awning (6370 and 6371)
- Leather Package: Driver Seat with Power, Extra Wide Passenger Seat, Sofa and Recliner
- Leather Faced Driver Seat with Power and Extra Wide Passenger Seat
- Leather Faced Hide-A-Bed Sleeper Sofa
- Leather Faced Swivel Recliner Chair
- Dining Table with Two Wooden and Two Folding Chairs (6330, 6332, 6350, 6351, 6352, 6372 and 6373)
- Two Wooden Dining Chairs
- Six Gal. Gas/Electric Water Heater
- Two Bedroom Window Awnings
- Decorative Opaque Shower Glass Decal
- Dual Pane Windows

- Radius Tinted Safety Glass Windows (Sliding Windows in Living Area and Jalousie Windows in Kitchen and Bedroom)
- Radius Entrance Door with Clear Glass, Shade and Screen Door

- Double Power Entrance Step with Light
- Tinted Skylight in Bathroom
- Slide-Out Room Awning
- Patio Awnings with Metal Cover

• Windows, Doors and Awnings

- Fire Extinguisher
- LPG Detector, Smoke and Carbon Monoxide Detectors
- Deadbolt Lock on Entry Door
- Egress Window(s)

- Driver and Passenger Three-Point Seat Belts (Lap and Shoulder)
- Extra Large Side View Mirror with Double Convex

• Safety Features

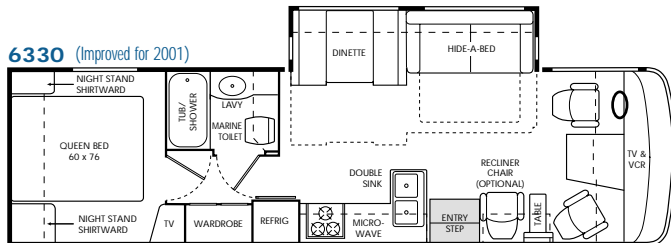
- Demand Water System and Water Pump
- Water Filter in Kitchen
- Six Gal. LPG Water Heater with Electronic Ignition (DSI)
- Water Heater By-Pass Valve
- Pressurized Water Fill
- One-Piece Fiberglass Tub/Shower
- Glass Shower Door and Enclosure
- Porcelain Toilet with Sprayer

- Heated Systems Compartment with Easy Access to Hook-Ups
- Decorative Kitchen and Bath Faucets
- Holding Tank Rinse System (Black Tank Only)
- Outside Shower
- Winterization Antifreeze Inlet to Pump
- Heated and Insulated Enclosed Water and Holding Tanks

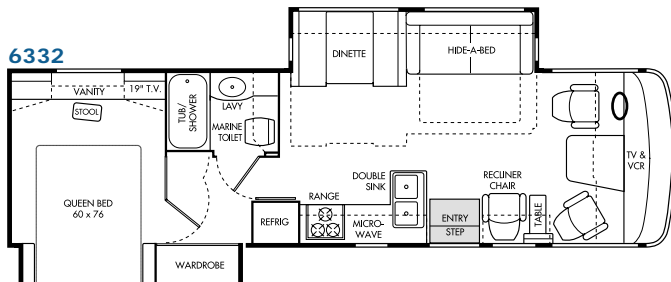
• Plumbing and LPG Systems



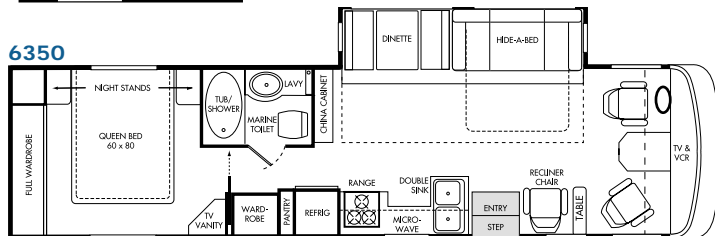
**6330** (Improved for 2001)



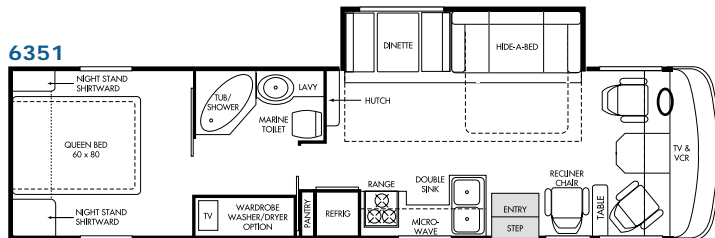
**6332**



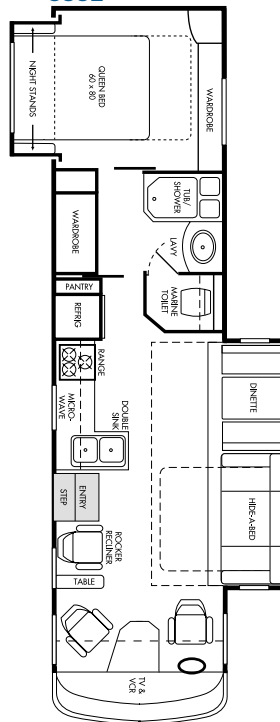
**6350**



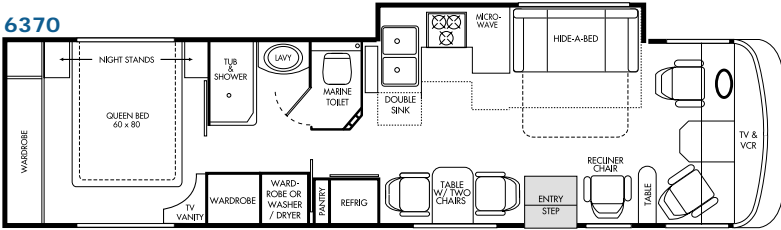
**6351**



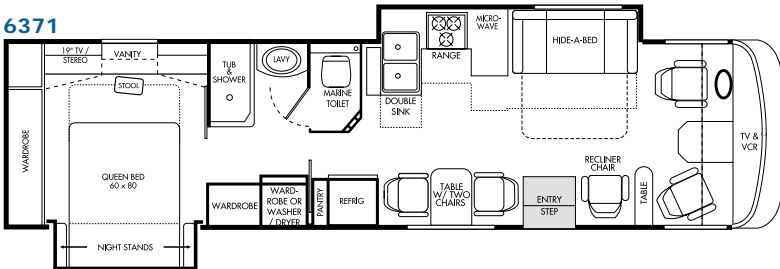
**6352**



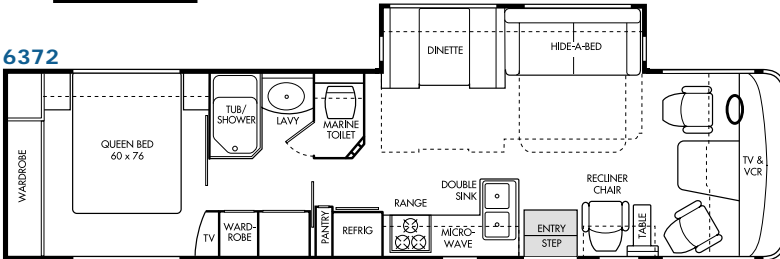
6370



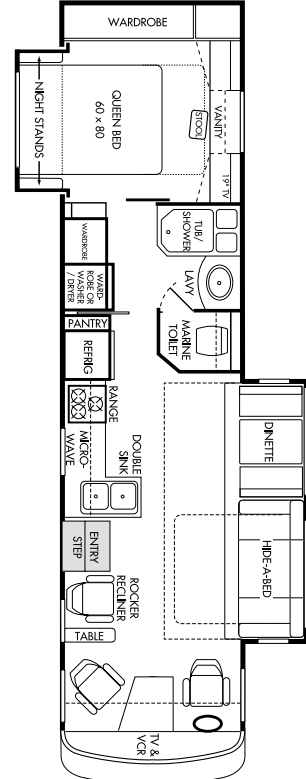
6371



6372



6373



Weights (lbs.)

	6330	6332	6350	6351	6352	6370	6371	6372	6373
Gross Vehicle Rating	20,500	20,500	20,500	20,500	20,500	20,500	20,500	20,500	20,500
Gross Combined Rating	25,500	25,500	25,500	25,500	25,500	25,500	25,500	25,500	25,500
Front Gross Axle Rating	7,000	7,000	7,000	7,000	7,000	7,000	7,000	7,000	7,000
Rear Gross Axle Rating	13,500	13,500	13,500	13,500	13,500	11,000	11,000	11,000	11,000
Rear and Tag Axle Comb. Capacity	N/A	N/A	N/A	N/A	N/A	13,500	13,500	13,500	13,500
Unloaded Vehicle Weight	16,350	16,850	17,010	17,100	17,360	18,000	18,500	18,000	18,500
Maximum Carrying Capacity	4,150	3,650	3,490	3,400	3,140	2,500	2,000	2,000	2,000

Measurements

Wheelbase	228"	228"	228"	228"	228"	228"+43"	228"+43"	228"+43"	228"+43"
Overall Length	33' 6"	33' 6"	36' 0"	36' 0"	36' 0"	36' 11"	36' 11"	36' 11"	36' 11"
Overall Height	11' 7"	11' 9"	11' 9"	11' 9"	11' 9"	11' 8"	11' 8"	11' 8"	11' 8"
Interior Height	79"	79"	79"	79"	79"	79"	79"	79"	79"
Interior Width	98 1/2"	98 1/2"	98 1/2"	98 1/2"	98 1/2"	98 1/2"	98 1/2"	98 1/2"	98 1/2"
Exterior Width	102"	102"	102"	102"	102"	102"	102"	102"	102"

Tank Capacities (gal.)

Water Heater	6	6	6	6	6	6	6	6	6
Gray Tank	35	57	50	50	50	50	50	50	50
Black Tank	45	40	50	50	50	50	50	50	50
Fresh Water Tank(s)	70	90	90	90	90	90	90	90	90
LPG Tank Volume	24	24	24	24	24	24	24	24	24

\* All fuel and liquid capacities are approximate and dimensions may vary. The customer has the responsibility to select the proper combinations of loads without exceeding the chassis weight capacities.



**www.nrvh.com**  
**909.943.6007**

3411 North Perris Blvd. Perris, CA 92571

Due to continued product improvement, National R.V., Inc. reserves the right to change materials, colors, specifications and prices at any time without notification.

Copyright © 2000, National R.V., Inc. 11/00