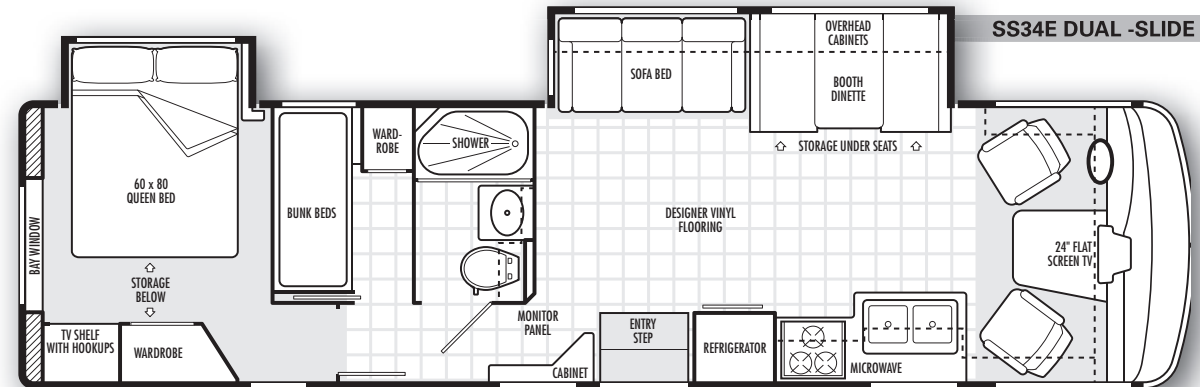
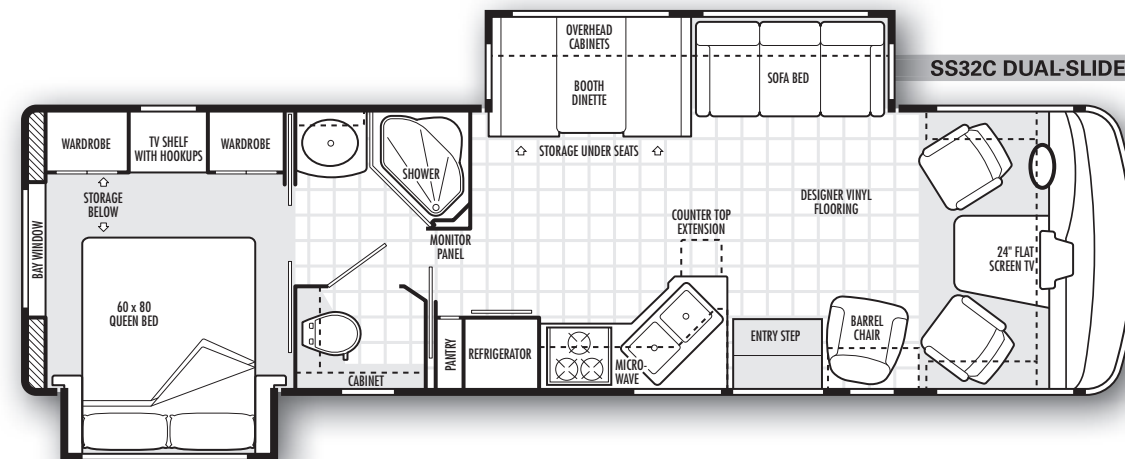
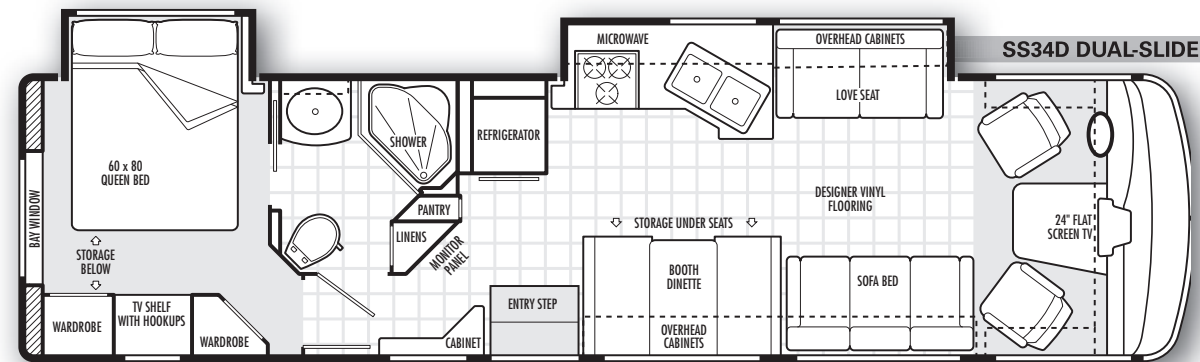
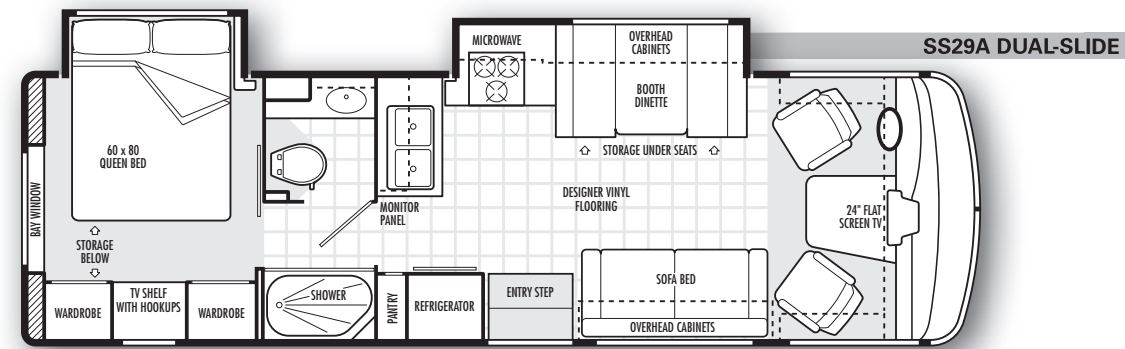
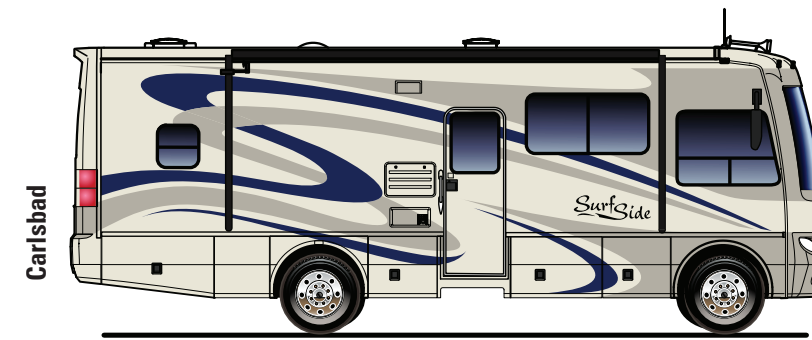


# FLOOR PLANS



# EXTERIORS



www.nationalrv.com  
3411 N. Perris Blvd  
Perris, CA 92571  
1.800.322.6007



©2007 by National RV, Inc.  
All information, illustrations and specifications in this publication are valid at time of printing. National RV reserves the right to make changes at any time, without notice, to any equipment, specifications, features, options, packages or models depicted in this brochure.  
680/SSV2



## SPECIFICATIONS

MEASUREMENTS	SS29A	SS32C	SS34D	SS34E
Overall length	29'-10"	32'-10"	34'-10"	34'-10"
Overall height*	12'-1"	12'-1"	12'-1"	12'-1"
Exterior width	101¼"	101¼"	101¼"	101¼"
Interior height	81¾"	81¾"	81¾"	81¾"
Interior width	97½"	97½"	97½"	97½"
Fuel Capacities	75 gal.	75 gal.	75 gal.	75 gal.
Water Heater	6 gal.	6 gal.	6 gal.	6 gal.
Gray Tank	45 gal.	42 gal.	42 gal.	42 gal.
Black Tank	40 gal.	41 gal.	40 gal.	40 gal.
Fresh Water Capacity <sup>f</sup>	74 gal.	74 gal.	74 gal.	74 gal.
Propane Gas (volume w.c.)	16 gal.	16 gal.	16 gal.	16 gal.
GVWR	18,000	20,500	20,500	20,500
GCWR	23,000	26,000	26,000	26,000
GAWR (front)	7,000	7,000	7,000	7,000
GAWR (rear)	11,000	13,500	13,500	13,500
Wheelbase	190	208	228	228
Tires	245/70R 19.5	245/70R 19.5	245/70R 19.5	245/70R 19.5
Tow Hitch Capacity	5,000 lbs.	5,000 lbs.	5,000 lbs.	5,000 lbs.
Axle Ratio	5.38:1	5.38:1	5.38:1	5.38:1
Peak HP	362 HP @ 4,750 RPM	362 HP @ 4,750 RPM	362 HP @ 4,750 RPM	362 HP @ 4,750 RPM
Peak Torque	457 lb./ft @ 3,250 RPM	457 lb./ft @ 3,250 RPM	457 lb./ft @ 3,250 RPM	457 lb./ft @ 3,250 RPM

### CHASSIS DESIGN STANDARD

Duraframe® patented steel sub floor construction
Ford® Super Duty F-53 Chassis <sup>a</sup>
Ford® Triton V-10 (6.8L) Engine <sup>b</sup>
Ford® Torq-Shift 5-speed automatic Transmission <sup>c</sup>
4-wheel disc ABS with hydroboost
Tapered leaf spring suspension with gas pressurized premium Bilstein® shock absorbers and front track bar
Column mounted shifter
Steel Wheels W/ Stainless Steel Wheel Simulators
5,000 lb. Class III hitch with 7-pin electrical connector <sup>d</sup>
Ford® 130 Amp alternator



<sup>a</sup> Ford® Chassis warranty 3 years/36,000 mi.

<sup>b</sup> Ford® Super Duty Engine warranty 3 years/36,000 mi.

<sup>c</sup> Ford® Torq-Shift Transmission warranty 3 years/36,000 mi.

<sup>d</sup> Actual towing capacity is dependent on load and tow circumstances are based on GVWR, GAWR and GCWR.

<sup>e</sup> Overall height is based on standard specifications and does not include any optional equipment added. Models equipped with Kingdome® satellite add 8" to height.

<sup>f</sup> Fresh Water Capacity includes the capacity of the water heater.

## STANDARD FEATURES

COACH BODY CONSTRUCTION
DuraFrame® patented steel sub floor construction
Steel framed laminated floor
Steel framed crowned laminated fiberglass roof
Steel framed laminated fiberglass high gloss sidewalls
Steel cockpit overhead construction
Front and rear molded high gloss fiberglass caps and integrated bumper assembly
Two Piece Windshield
Electric slide-out room(s)
Aluminum exterior storage compartment doors with gas struts, side-hinged for easy access on most applications
Steel framed exterior storage compartment with insulated floors
Awning rail/rain gutter with drip spouts
Steel insulated front bulkhead
Custom partial paint with deluxe vinyl graphics
Grey "National RV" logo on rear cap
Big Box construction with 82" interior height
Fuel fill door in rear bumper

### FURNITURE

Kustom-Fit® fabric driver recliner seat with swivel base
Kustom-Fit® fabric sleeper sofa (N/A SS29A)
Kustom-Fit® fabric passenger recliner seat with swivel base
Kustom-Fit® Wonder-Bed® fabric sleeper sofa (SS29A only)
Kustom-Fit® fabric sofa love seat (SS34D only)
Freestanding fabric barrel chair (SS32C only)

### Appliances & Accessories

6 cu. ft. double door Dometic® refrigerator
High output three burner cook top with drawers below
1.0 cu. ft. Microwave oven
Range Hood
Cable TV outlets in living room and bedroom areas
Multiple telephone jacks
TV antenna
24" flat screen TV in living area (overhead cockpit)
Video control box with antenna boost
Pre-wired for satellite dish

### COCKPIT FEATURES

Big button AM/FM cassette stereo and CD with four speakers
Driver and passenger reading lights with switches
Custom designed ergonomic dash with full gauge package

Pantographic windshield wipers
Power steering
Electronic cruise control
Tilt steering wheel
High mounted, powered, heated, black convex rear view mirrors (white standard; black with optional full body paint)
Passenger work station with 12V and 120V power outlets and phone jack in console
Padded vinyl sun visors with map pocket
Wrap-around privacy curtain with easy reach wand
Fully automatic 4-point leveling jacks with dash mounted controls
Generator hour meter and auxiliary start switch on dash

### Floor mats

### ELECTRICAL SYSTEMS

50 Amp 120V distribution panel
50 Amp shore power cord
12V distribution panel with re-settable push button circuit breakers
4.0 kW Onan® Microquiet series generator
(2) 6V deep cycle house batteries
55 Amp converter/charger
(1) 12V chassis battery

Battery disconnect switch for house batteries
Systems monitor panel
Amber porch light with interior switch

Lighted storage compartments and service area
Patio 120V receptacle and phone jack

Recessed incandescent lights in ceiling
Designer light fixtures in living areas

Cosmetic light in bathroom
Two water pump switches (bathroom and ext. service compartment)

Battery voltage meter in monitor panel
GFI protected electrical circuit on select 110V receptacles

Courtesy light at entry-door switch panel
7-pin trailer hitch connector

### WINDOWS, DOORS & AWNINGS

Single Pane radius tinted safety glass windows
Manual Patio awning with white vinyl cover (Partial Body Paint)
Bedroom rear picture window
30" wide entrance door with clear glass, shade and screen door
Power entrance step with light and anti-skid surface
Ventilated windows on end walls of lounge slide-outs

Slide-out topper awnings
Window in private toilet room (SS32C only)
Tinted skylight in bathroom

### INTERIOR

Natural Maple finish paneling and doors
Ozite ceiling material
Tele-strut hardware on overhead doors and positive catches
Drawers with ball bearing roller guide design
Mini-blinds with valances

### LIVING AREA

Booth dinette with under-seat storage cabinets
Plush carpet with deluxe pad
Vinyl Tile Flooring

### KITCHEN AREA

Pantry (N/A SS34E)
Laminate kitchen counter top
Large stainless steel under mount dual sink
Wood cutting block sink cover
Wastebasket

### BATH AREA

Designer vinyl tile flooring
Decorative glass shower door
Laminate bathroom counter top

### Medicine cabinet

### BEDROOM AREA

Plush carpet with deluxe pad
Bedsread, pillows and shams
Queen bed with under bed storage compartment (Select models only)
Second bedroom with (2) bunk beds (SS34E only)

### PLUMBING SYSTEMS

Heated systems compartment with easy access to hook-ups
On demand water system and water pump
Holding tank rinse system (black tank only)
Winterization antifreeze inlet to pump
Outside shower located in service compartment
Water heater bypass valve
Pressurized water fill with integrated regulator
6 gallon propane water heater with electric ignition
Single lever faucet with side sprayer
One-piece fiberglass shower
Handheld shower head with flexible hose

Low profile Toilet (SS29A / SS32C)
High Profile Toilet (SS34D / SS34E)
Single lever bathroom faucet

### SAFETY/SECURITY

Fog lights
Driver and passenger three point seat belts
Dead bolt lock on entry door
Exterior entry assist handle
Interior entry assist handle
Fire extinguisher
Smoke, carbon monoxide (CO) and propane leak detectors
Emergency exit window
Daytime running lights (CSA units only)
Rear third brake light

### CLIMATE CONTROL

Thermostatically controlled 13,500 BTU ducted white roof air conditioner (white)
35,000 BTU electronic ignition furnace
Ducted heating system
Pre-wire for 12V Fan-Tastic® Vent with wall thermostat & rain sensor in bedroom
12V roof exhaust fan in bathroom and galley
Non-powered roof vent in bedroom
Dash automotive heating and air conditioner system with defroster

## OPTIONAL FEATURES

### COACH BODY CONSTRUCTION

Black aluminum rear ladder
Automotive undercoating
Custom full body paint available in choice of three color schemes
Protective film front mask

### FURNITURE

Kustom-Fit® soft touch Optima Leather® driver's seat, passenger seat and sofa (Package with (Kustom-Fit® soft touch Optima Leather™ sleeper sofa (N/A SS29A)
Kustom-Fit® soft touch Optima Leather™ sleeper sofa (N/A SS29A)
Kustom-Fit® Wonder-Bed® soft touch Optima Leather™ sleeper sofa (SS29A only)

### Appliances & Accessories

High output three burner cook top with range/oven
Bunk house entertainment package includes two 8" flip-down LCD monitors with wireless headphones and DVD player (SS34E)
DVD/VCR combo with remote
Home theater entertainment package includes DVD/VCR digital receiver and subwoofer/speaker system
Kingdome® automatic stationary satellite dish
Exterior entertainment center (N/A on SS34E)
Convenience package: (4) 2-way radios, rechargeable flash light & vacuum, exterior shower, soap dispenser & paper towel holder

### CLIMATE CONTROL

Additional 13,500 BTU white roof A/C (req 5.5 kW generator option)
Two 13,500 BTU black roof A/C (requires 5.5 kW generator option)
12V Fan-Tastic® Vent with 3 speed exhaust fan in galley

### COCKPIT FEATURES

Sirius® satellite radio module with 6 month subscription
Rear vision system with cockpit monitor and black and white motorized rear camera with built-in microphone
Dual 2-speed overhead dash fans

### ELECTRICAL SYSTEMS

5.5kW Onan® Marquis Gold series generator and 1,800W inverter (required for optional second roof A/C)
---

### Windows, Doors & Awnings

Dual pane radius tinted safety glass windows
Manual patio awning with black metal cover and hardware (Full Body Paint)

### INTERIOR

Natural Cherry finish paneling and doors
Full vinyl tile flooring
Day/night shades with designer valances (N/A in kitchen)
Flip-up Laminate counter top extension (N/A on SS34E)
Hardwood folding dinette chair
Walk-in Closet in place of bunk beds (SS34E only)

### CLIMATE CONTROL

Additional 13,500 BTU white roof A/C (req 5.5 kW generator option)
Two 13,500 BTU black roof A/C (requires 5.5 kW generator option)
12V Fan-Tastic® Vent with 3 speed exhaust fan in galley