



WHEN YOU KNOW THE DIFFERENCE™



KING AIR®

2008 KING AIRE

TAKE YOUR LIFE TO *Amazing Heights*

Now, there's a coach that reflects your level of sophistication. Introducing the 2008 King Aire—the newest landmark in Newmar's luxury line. Sleek in design and ample in style, this architectural marvel is destined to change the landscape of the luxury coach world forever.



A wide-angle photograph of a motorhome interior. The space is divided into a kitchen area on the left, a living area in the center, and a dining area on the right. The kitchen features dark wood cabinetry, a stainless steel refrigerator, a microwave, and a sink with a faucet. The living area has two large leather sofas facing each other, decorated with patterned and solid-colored pillows. A small round table with a bowl of fruit sits between the sofas. A large flat-screen TV is mounted on a wooden cabinet in the center. The floor is covered in large, light-colored tiles. The ceiling has recessed lighting. The overall atmosphere is warm and modern.

AN ULTRAMODERN *Space*

Enjoy your tour of the groundbreaking King Aire. With its clean lines, rich colors and unique textures, there's simply no other coach like it.

You'll find only the most exquisite elements in this space, like high-gloss hardwood cabinetry, contemporary light fixtures and artistic porcelain tiling. And the cozy Villa™ furniture and Sony® LCD TV are sure to make you feel right at home.

4561 floorplan with Java Décor and Soho High-Gloss Cherry Hardwood Cabinetry

THE FOCAL *Point*

Standing tall and handsome, King Aire is well on its way to becoming an industry icon. Notice how the exterior glistens, thanks to the Full-Paint Masterpiece Finish™ with Super Clear Coat and Diamond Shield protective film. You'll find each of its paint options as striking as the next.

Noted for its innovative features and charismatic design, King Aire provides a blueprint for the next generation of luxury coaches. Take, for instance, the video security system and remote-controlled exterior chrome mirrors with defrost, turn signal indicators and sideview cameras.





Form MEETS FUNCTION

King Aire's progressive kitchen looks and operates like a dream. The handcrafted hardwood cabinets were intuitively designed with deep storage space, self-closing drawers and long, brushed silver handles. And their sleek appearance is complemented by a distinctive tile backsplash.

Whether you're a chef or a culinary novice, preparing any meal in your new kitchen feels like a gourmet experience. Observe the state-of-the-art stainless appliances, including the 30" GE Profile™ Advantium™ microwave oven and the optional French three-door refrigerator with icemaker and water dispenser.





SOUND STRUCTURAL *Design*

Because every structure begins with a substantial foundation, King Aire is built on a Spartan® K3 chassis. And paired with the remarkable 600-hp Cummins® ISX engine, your coach is among the most powerful on the road. It also comes equipped with TripTek™ travel information and two touch-screen monitors—one for the Garmin® navigation system and another for the backup and sideview cameras.

You'll be pleasantly surprised by the minimal effort required to drive this premier coach. Exclusive Comfort Drive™ Steering makes turning, backing up and changing lanes stress-free. This cutting-edge technology returns the steering wheel to the center and helps you maintain a smooth course. You'll find there's little correction involved. Plus, with front and rear tag disc brakes, King Aire has real stopping power.



AESTHETICALLY *Pleasing*

Welcome to your luxurious new master bedroom—a space designed for ultimate relaxation. Take a seat on the comfortable king-size bed with a King Koil™ Turn-Free Mattress. King Aire's soft lighting and stylish suede headboard, duvet and accent pillows create a Zen-like atmosphere for watching your 40" Sony® LCD TV.

If you love shopping, the fragrant cedar-lined wardrobe, spacious cabinets and underbed storage can comfortably house all of your personal effects.



STANDARD & OPTIONAL FEATURES

STANDARD FEATURES

CHASSIS FEATURES

- Spartan® K3 Chassis with IFS
- Cummins® ISX 600 hp
- Allison® 4000 MH Transmission
- Tag Axle
- Automatic Traction Control
- Power Comfort Drive™ Steering
- Accuride® ACCU-SHIELD™ Non-Polish Aluminum Wheels
- HWH® Four-Point Hydraulic Jacks with Single Touch Control and Chassis Air Leveling
- Power Tilt and Telescope VIP SMART WHEEL with Black Leather
- Memory Settings for Driver's Seat, Pedals, Steering Wheel and Exterior Mirrors
- Cruise Control
- Recessed Fuel Fills with Crossover to Fill from Either Side
- Back-Up Alarm
- Anti-Lock Braking System
- Front and Rear Tag Disc Brakes
- Electronic Chassis Information Display in Dash
- Tire Pressure Monitor System
- Chassis Service Center
- Leece-Neville 270-Amp Alternator
- 200 Gallon Fuel Tank
- 55 Degree Cramp Angle

AIR CONDITIONING & HEATING

- Three 15M Penguin™ Heat Pump Central Air Conditioners with Remote Control Thermostat (45' Floorplans)
- Hydronic Zone Heating System
- Dash Heater and High-Output Air Conditioner
- Propane Leak Detector

APPLIANCES & ACCESSORIES

- 30" GE Profile™ Advantium™ Microwave Oven
- Two-Burner Recessed Gas Cooktop
- Polished Corian® Range Cover
- Norcold® 17 Cu.Ft. Four-Door Refrigerator with Auto Defrost, Icemaker and Water Dispenser
- Norcold® Freezer on Pullout Tray
- Washer/Dryer Prep
- 40" Sony® LCD TV in Living Area*
- 52" Sony® LCD TV in Living Area*
- 40" Sony® LCD TV in Bedroom
- Secondary Multiple Touch Screen

- TripTek™ Electronic Travel Information (Displayed on Rearview Monitor)
- Video Security System
- Surround Sound System with CD and DVD Player
- Exterior Entertainment Center with 32" Sony® LCD TV and AM/FM Radio with CD Player
- Bose Wave® Radio with CD Player and Alarm Clock in Bedroom
- TV Antenna with Power Lift, One Exterior Jack and Two Interior Jacks
- "TV Antenna Is Up" Warning Signal
- Garmin® Navigation System Displayed on Dash Monitor
- Satellite Prep—Phone, TV Jack and Receptacle
- AM/FM/XM-ready with MP3 Adapter and Six-Disc CD Player
- Telephone Connection with Phone Jacks in Living and Dash Areas
- Air Horns
- 8.5" x 11" Safe
- Universal Remote Control
- Central Vacuum with Deluxe Tool Kit
- Audio/Video Smart-Source Switch with Remote Control
- Cable TV Connection with Rg6 Coax
- High Definition Component Wiring and HD-ready Video Switching System
- 10 Bc Fire Extinguisher, and Carbon Monoxide and Smoke Detectors

CABINETS & FURNITURE

- Natural Cherry Hardwood Unitized Cabinets with Fully Overlayed Cabinet Doors
- Hidden-Leaf Dinette Table with Corian® Top and Four Chairs (Two Fixed, Two Folding)*
- Polished Corian® Countertop in Kitchen with Undermounted Stainless Steel Sink and Flush Sink Covers
- Polished Corian® Countertop with Integrated Bowl in Bathroom (Vessel Sink in Rear Baths)
- Polished Corian® Countertop on Bedroom Nightstands
- Adjustable Pullout Pantry Shelves*
- Residential Style Full Extension Self-Closing Drawer Guides
- Drawers with Dovetailed Sides and Maple Bottoms
- Concealed Hinges on Cabinet Doors
- Villa™ Furniture
- Ultraleather/Vinyl Heated Oversized Passenger Seat with Eight-Way Power, Power Lumbar, Power Recline and Power Footrest

- Ultraleather/Vinyl Heated Driver Seat with Eight-Way Power, Power Lumbar and Power Recline
- Lifts on Bed Top to Access Storage Area
- Cedar Paneling in Rear Wardrobe
- Carpeted Wardrobe Bottoms with Pearl Cream Headliner on Shelves and Overhead Cabinet
- Storage Shelves Recessed into Rear Cap of Rear Wardrobe Floorplans
- King Koil™ Turn-Free Radius Cornered Mattress with Quilted Bedspread, Matching Bed Skirt, Accent Pillows and Faux Fur Throw
- King Bed with Hardwood Bed Base

ELECTRICAL FEATURES

- 12.5 kW Cummins Onan® Diesel Quiet Generator on Hydraulic Slide and Auto Changeover
- 50-Amp Electrical Service with Flexible Cord on Power Cord Rewind Reel
- Four AGM House Batteries on Pullout Tray
- Battery Disconnect Switch
- 110-Volt Exterior Receptacle
- Exterior TV Jack
- 5-Watt Solar Panel
- 2800-Watt Pure Sine-Wave Inverter with Automatic Generator Start
- Multi-Plex Electrical System
- Emergency Start Switch
- Exterior Security Lights on Each Side
- Midship Side Turn Signals
- Recessed Docking Lights
- Switched Receptacle for Engine Block Heater
- Recessed Halogen Lights in Ceiling and Overhead Cabinets
- Lighted Wardrobes with Automatic Switches
- Slideout Information Voice Module
- Manually Operated Hold-to-Run Slideout Switch
- ICC Light Flasher Switch
- Two 12-Volt Auxiliary Receptacles on Dashboard
- Interior Courtesy Lights
- Mood Lights in Lambrequins, Kitchen Valance and Bed Base
- Daylight Headlight System

EXTERIOR FEATURES

- Full-Paint Masterpiece Finish™ with Super Clear Coat and Diamond Shield Front Protective Film
- One-Piece Bonded Windshield

- Convex Exterior Chrome Mirrors with Remote Control, Defrost and Turn Signals with Sideview Cameras
- Entrance Door with Automatic Double Step
- Dual Latch Front Door with Power Flush Stepwell Cover
- Lighted Exterior Storage Compartments with Cargo Liner Controlled by Interior Master Switch
- Pantographic Basement Doors with Side-Hinged Doors under Slideouts
- Power Locking Baggage Doors
- 15,000 lb. Towing Hitch with Two Extra 14-Gauge Wires
- Lighted Acrylic Assist Handle at Entrance Door
- Rear Protective Tow Guard with Stainless Steel Newmar Name Cutout
- Holding Tank Levels Displayed in Exterior Water Works Compartment
- Squeegee in Exterior Compartment
- Undercoating
- Mud Flaps

INTERIOR FEATURES

- Sculptured Padded Vinyl Ceiling
- Power Vertical Drop-down Windshield Area Privacy Shade
- Lined Day/Night Pleated Window Shades and Lambrequins
- Hardwood Fascia on Living Area Slideout
- Polished Corian® Window Sills
- Polished Porcelain Floor Tile in Kitchen, Bathroom and Main Living Areas
- Hardwood Interior Passage Doors
- Deluxe Carpeting with High-Density Padding and Sculptured Carpet in Bedroom Area
- Interior Assist Handle at Main Entrance Door
- Power Driver- and Passenger-Side Sun Shades
- Power-Activated Sun Visors

PLUMBING & BATH FEATURES

- Demand Water System with Aquajet™ "ES" Pump
- Sewage and Grey Holding-Tank Rinse
- Thetford™ Aria Sculptured China Stool (Thetford™ Vacuum Flush Stool in Rear Baths)
- Towel Bar, Tissue Holder, Towel Ring and Robe Hook
- Exterior Convenience Wash Station—Hot/Cold Water, Soap and Towel Dispenser
- Corian® Shower Walls with Ceramic Tile Inserts

- Two Monitor Panels (One Interior and One in Exterior Water Compartment)
- MANABLOC® Plumbing System
- Monoplex Water-Pump Switches Located in Bathroom, Kitchen and Near Gate Valves
- Auto Water-Fill System
- Designer Faucets in Bathroom and Kitchen
- Whole House Water Filter
- Water Filter with Drink Dispenser at Kitchen Sink
- Automatic Rewind Water-Hose Reel

CONSTRUCTION FEATURES

- One-Piece Molded Fiberglass Roof with 9mm Decking
- Gelcoated Fiberglass Exterior Sides
- Gelcoated Fiberglass Front and Rear Caps
- Aluminum-Frame Sidewalls and Roof Construction, 16" on Center
- Power Lock Arms on All Slideout Rooms
- 5/8" Foam Insulation Laminated in Sidewalls and Ceiling
- Roof R-Value Rating: 16
- Sidewall R-Value Rating: 11
- Floor R-Value Rating: 16
- Basement R-Value Rating: 4 (Included with Floor R-Value)

WINDOWS, AWNINGS & VENTS

- Double-Pane, Flush-Mounted, Tinted Safety-Glass Windows
- Fan-Tastic® Vent with Rain Sensor in Kitchen Area and Bathroom
- Skylight in Bathroom*
- Driver's-side Power Window
- Girard® Power Bedroom and Slideout Window Awnings
- Integrated Girard® Power Box Side Awning with Wind Sensor and Remote
- Girard® Power Front Entrance Door Awning
- Slideout Awning Covers
- Keyless Entry
- Cockpit Overhead Ventilation System

OPTIONAL FEATURES

CHASSIS FEATURES

- Collision Avoidance System

AIR CONDITIONING & HEATING

- Electric Heat under Floor Tile in Kitchen and Bath
- Electric Heat under Floor Tile in Kitchen, Bath and Living Areas

APPLIANCES & ACCESSORIES

- One-Piece Washer/Dryer
- Stackable Washer/240-Volt Dryer in Full-Length Cabinet*
- Dishwasher in Drawer*
- All-Electric Unit with Maytag® Refrigerator and Four Extra Batteries*
- Remote-Controlled Rearview Color Camera
- King Dome In-Motion Satellite without Receiver
- KVH R-6 In-Motion Satellite without Receiver
- KVH R-6 In-Motion High Definition Satellite Dish with Receiver in Living Area
- CB Radio with Antenna
- Wireless Internet Connection
- 32" Sony® LCD TV in Front Overhead Cabinet

CABINETS & FURNITURE

- Tribeca High-Gloss Cherry Hardwood Cabinets
- Soho High-Gloss Cherry Hardwood Cabinets
- Ginger Glazed High-Gloss Cherry Hardwood Cabinets
- Manhattan High-Gloss Cherry Hardwood Cabinets
- Camden High-Gloss Cherry Hardwood Cabinets
- Ultraleather Hide-a-Bed with Air Mattress/Dinette Ensemble with Two Folding Chairs*

ELECTRICAL FEATURES

- Roof-Mounted Spot Light

EXTERIOR FEATURES

- Large Storage Tray with Access from One or Either Side
- Power Sliding Storage Tray

INTERIOR FEATURES

- Power Window Shades

PLUMBING & BATH FEATURES

- Assist Handle in Tub/Shower
- RV Sani-Con Waste Disposal System

*Check with dealership on floorplan availability

FABRICS & CABINETS



Natural Cherry



Camden
High-Gloss Cherry



Ginger Glazed
High-Gloss Cherry



Manhattan
High-Gloss Cherry



Soho
High-Gloss Cherry



Tribeca
High-Gloss Cherry



Cinnabar



Flint



Java



Pearl



Tuxedo



Watercress

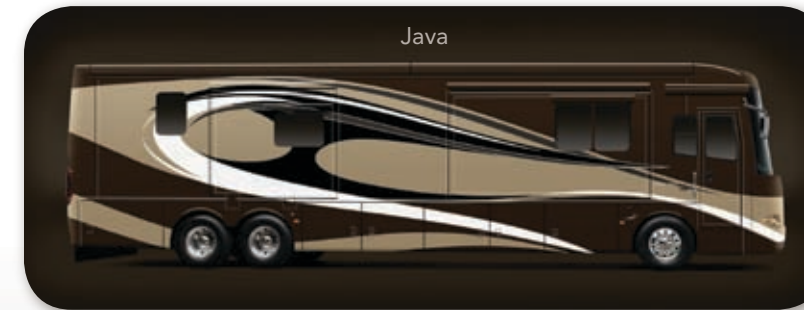
EXTERIOR PAINTS



Cinnabar



Flint



Java



Pearl

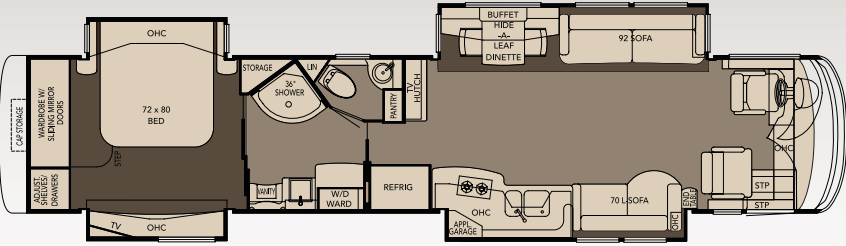


Tuxedo

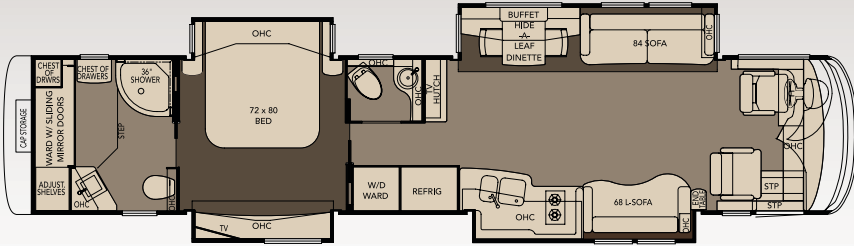


Watercress

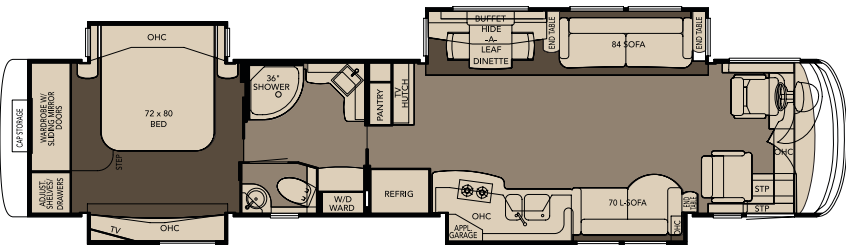
FLOORPLANS



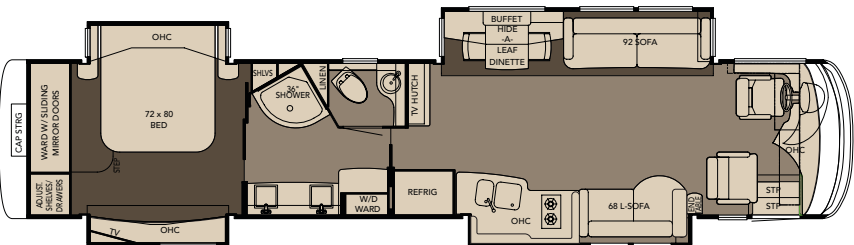
2008 King Aire Diesel Bus 4560



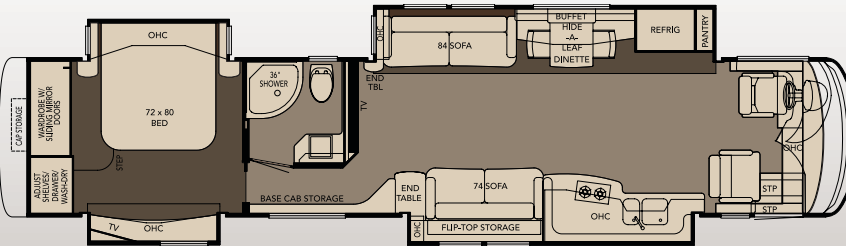
2008 King Aire Diesel Bus 4561



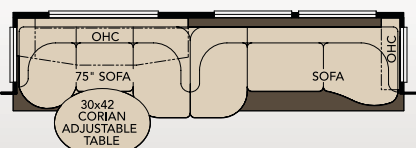
2008 King Aire Diesel Bus 4562



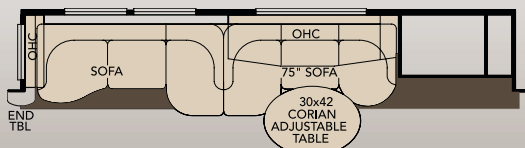
2008 King Aire Diesel Bus 4563



2008 King Aire Diesel Bus 4564



K331-1 Sofa/Dinette Combination
KGDB 4561



K331-DB4564 Sofa/Dinette Combination
KGDB 4564

SPECIFICATIONS

FLOORPLAN

FLOORPLAN	APP. OVERALL LENGTH	WIDTH	APP. OVERALL HEIGHT	INTERIOR WIDTH	INTERIOR HEIGHT	GREY	SEWAGE	WATER	LP	FURNACE
2008KGDB4560	44' 11"	101.5"	13' 4"	95.5"	84"	80 gal.	60 gal.	140 gal.	32 gal.	65,000 Btu
2008KGDB4561	44' 11"	101.5"	13' 4"	95.5"	84"	80 gal.	60 gal.	140 gal.	32 gal.	65,000 Btu
2008KGDB4562	44' 11"	101.5"	13' 4"	95.5"	84"	80 gal.	60 gal.	140 gal.	32 gal.	65,000 Btu
2008KGDB4563	44' 11"	101.5"	13' 4"	95.5"	84"	80 gal.	60 gal.	140 gal.	32 gal.	65,000 Btu
2008KGDB4564	44' 11"	101.5"	13' 4"	95.5"	84"	80 gal.	60 gal.	140 gal.	32 gal.	65,000 Btu

SPARTAN® CHASSIS

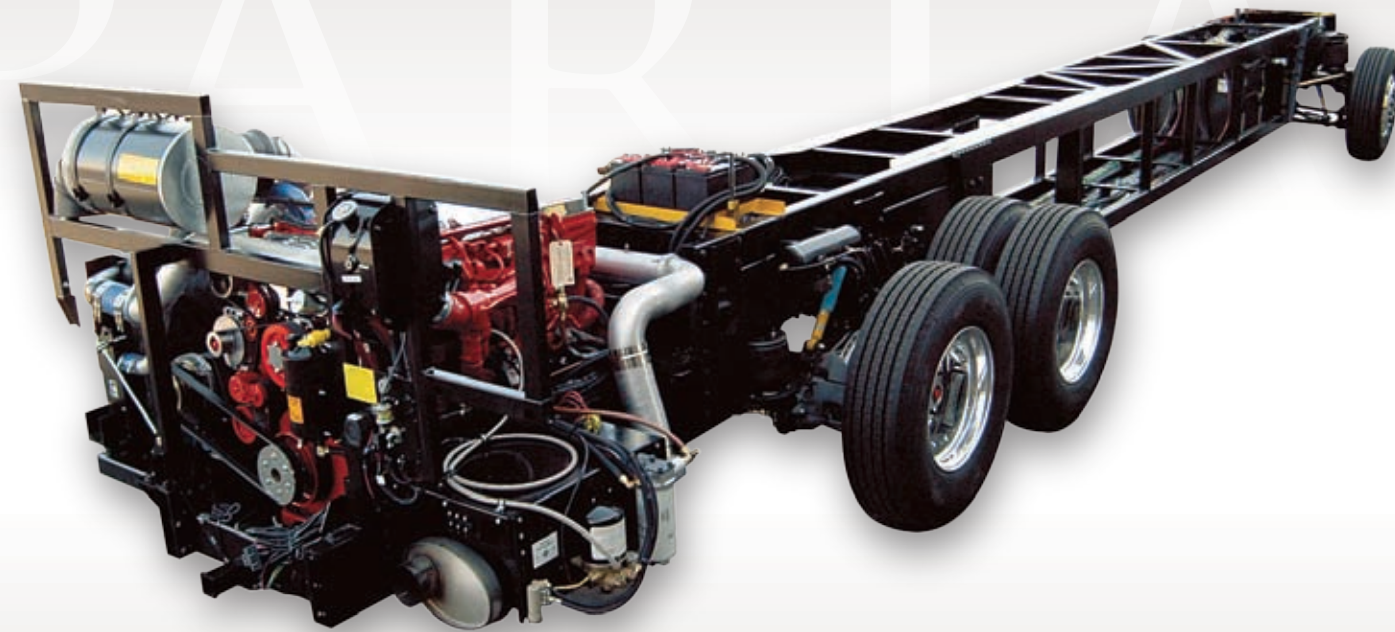
FLOORPLAN	ENGINE HP	AXLE RATIO	FUEL CAP.	WHEEL-BASE	FRONT GAWR*	REAR GAWR*	TAG GAWR*	GVWR*	GCWR*	APP. UVW	APP. NCC
2008KGDB4560	600	430-1	200 gal.	294"+TAG	20,000 lb.	20,000 lb.	14,000 lb.	54,000 lb.	69,000 lb.	44,400 lb.	9,600 lb.
2008KGDB4561	600	430-1	200 gal.	294"+TAG	20,000 lb.	20,000 lb.	14,000 lb.	54,000 lb.	69,000 lb.	44,500 lb.	9,500 lb.
2008KGDB4562	600	430-1	200 gal.	294"+TAG	20,000 lb.	20,000 lb.	14,000 lb.	54,000 lb.	69,000 lb.	44,600 lb.	9,400 lb.
2008KGDB4563	600	430-1	200 gal.	294"+TAG	20,000 lb.	20,000 lb.	14,000 lb.	54,000 lb.	69,000 lb.	44,400 lb.	9,600 lb.
2008KGDB4564	600	430-1	200 gal.	294"+TAG	20,000 lb.	20,000 lb.	14,000 lb.	54,000 lb.	69,000 lb.	44,700 lb.	9,300 lb.

Lengths, heights, widths and dry weights are approximate. Weight will vary based on optional equipment added to the above base weight.
GAWR: Gross Axle Weight Rating is the maximum permissible weight for an axle.
GVWR: Gross Vehicle Weight Rating is the maximum permissible weight for a fully loaded motor coach.
GCWR: Gross Combination Weight Rating is the value specified by the manufacturer of the vehicle as the maximum allowable loaded weight of this motor coach and any towed trailer or towed vehicle.

UVW: Unloaded Vehicle Weight is the weight of this motor coach as built at the factory with full fuel, engine oil and coolants. The UVW does not include cargo, fresh water, LP gas or dealer-installed accessories.
NCC: Net Carrying Capacity is the maximum weight of all occupants, including the driver, personal belongings, food, fresh water, waste water, LP gas, tools, tongue weight of towed vehicle, dealer-installed accessories, etc., that can be carried by the motor coach.

*Specifications supplied by the chassis manufacturer.

SPARTAN® K3 CHASSIS

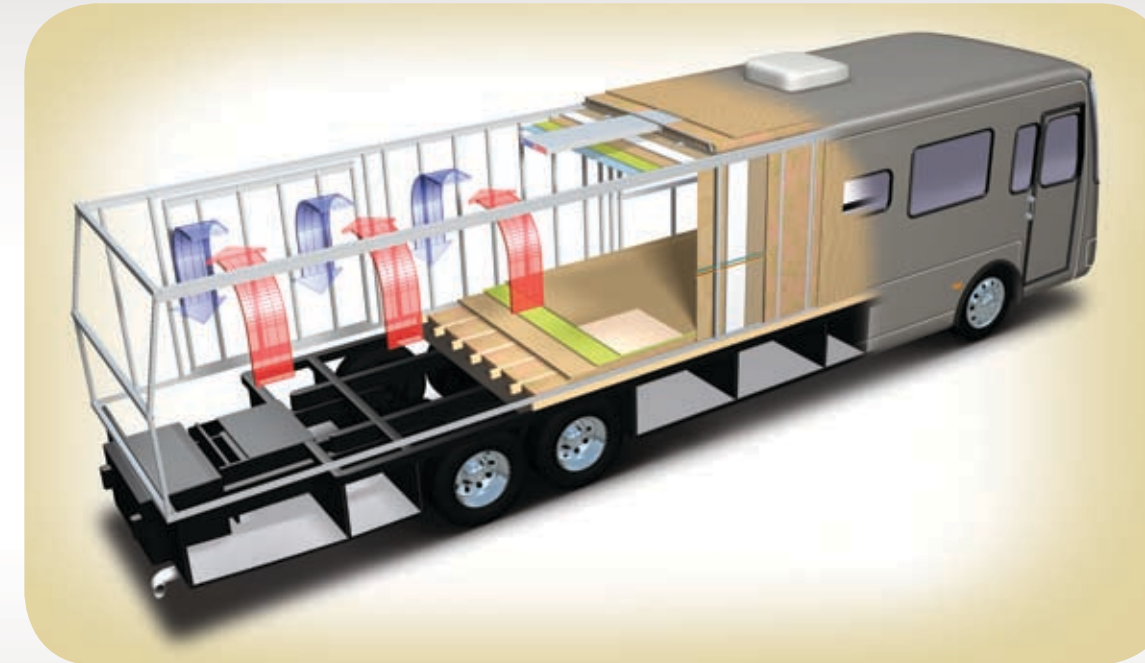


When they built the K3, Spartan's engineering team threw conventional design out the window to create the strongest chassis ever built. The web of tubular truss frames and sub-structure support beams create a solid, stable foundation with extensive pass-through storage. The K3 offers a GVWR of 54,000 lbs., with a 14,000 lb. tag axle. The high GVWR and sound structural

design allow OEMs to expand the coach beyond the chassis footprint, adding additional living space to the motor coach's interior. When you drive your coach built on a Spartan K3 chassis, you can be confident that you have the most powerful, highest performing coach on the road.

CONSTRUCTION

King Aire is a showcase for Newmar's exacting standards, meticulous detailing and legendary craftsmanship. The sturdy coach boasts a one-piece molded fiberglass roof and 16" on-center framing like that of a fine, site-built home.



NEWMAR CENTRAL AIR CONDITIONING
Newmar's exceptional Total Comfort central air conditioning is standard on every King Aire. The system consists of two separate fully ducted systems—one to distribute incoming cool air, the other to quickly and effectively remove warm air from your living area.

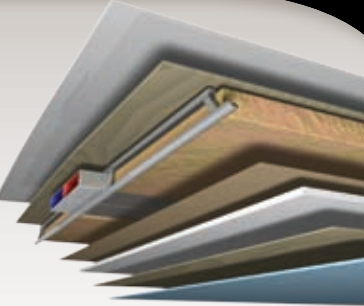


NEWMAR EXPRESS LIMITED WARRANTY
Every King Aire Diesel Bus is backed by Newmar's two-year limited warranty unlimited miles. Ask your Newmar dealer for details.

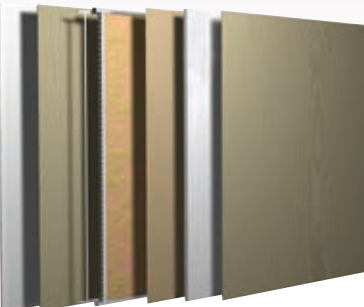
LIMITED 5-YEAR STRUCTURAL WARRANTY

If any part of your Newmar recreational vehicle superstructure (which is the steel/aluminum structure of the sidewall, roof or frame) fails to perform properly within five years from the date of purchase because of faulty workmanship or material supplied by Newmar, it will be repaired without charge for either parts or labor by Newmar. This structural warranty is available only to the original purchaser and is non-transferable.

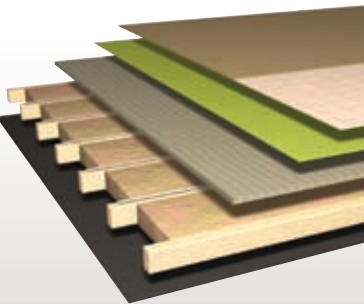
Roof R-Value = 16
One-Piece Molded Fiberglass Roof
9mm Wood Decking
Aluminum Rafter Framing
Fiberglass Batten Insulation
Sikaflex
A/C Ducting
Aluminum Stringer Framing
Kraft Paper Vapor Barrier
5/8" Bead Foam
3/16" Panel
Padded Vinyl Overlay



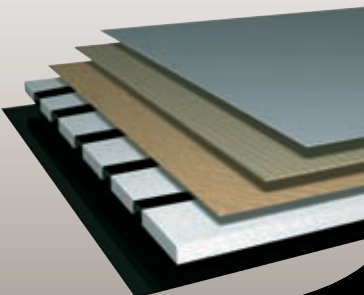
Sidewall R-Value = 11
Composite One-Piece Gelcoat
Exterior Sidewall
3/16" Plywood Exterior Wall
Fiberglass Batten Insulation
Sikaflex
5/8" Bead Foam
3/16" Plywood Interior Wall
Kraft Paper Vapor Barrier
Aluminum Framing with
3 1/2" Header Above



Floor R-Value = 16
Carpet/Tile
Carpet Padding
5/8" Floor Decking
2"x 3" Wood Framing
Fiberglass Batten Insulation
Polyethylene Moisture Barrier



Basement R-Value = 4
Cargo Liner
3/8" Floor Decking
3/16" Luan Panel
1 1/2" Bead Foam
Aluminum Sheeting with
Steel Support Rails to
Prevent Bowing and Flexing





SEE MORE OF KING AIRE'S MODERN AESTHETICS AT
www.newmarcorp.com/kingaire

OR VISIT YOUR LOCAL NEWMAR DEALER:



(Please affix dealer stamp in this area.)



KING AIRE



NEWMAR CORPORATION • 355 N DELAWARE ST • PO BOX 30 • NAPPANEE IN 46550-0030
574-773-7791 Fax 574-773-2895 • www.newmarcorp.com/kingaire

