

**NORTHERN** *Life*

2007

**NORTHERN** *Life*



9'6" QUEEN CLASSIC SE



**FIVE STAR RATING**

*Personal Care  
Quality Workmanship*



# The History of Northern Lite

In 1989, a group of experienced RV builders, working for a major fiberglass truck camper manufacturer saw a niche in the RV market and established Northern Lite Mfg. to design and build a fiberglass truck camper to fit import trucks.

The company evolved and eventually began to produce a complete line of full sized truck campers.

In 1989, two entrepreneurs, Mac Donkin and Lloyd Gartrell, who had sold their successful businesses and decided to retire, each purchased with their wives, a Northern Lite Camper for a once in a lifetime tour across Canada and the US and after that a tour to Alaska.

After spending 7 months on the road traveling, these gentlemen were so impressed with the quality and workmanship of their Northern Lite Campers that they decided that when they returned home they would invest in this growing company. They felt that if they and their wives were so pleased with these campers, then other buyers would be impressed also.

After 4 years of being investors, Mac and Lloyd decided to buy the rest of the Company.

Putting their business experience to work, and emphasizing the importance of building a quality product, Mac and Lloyd have expanded the Company until

today Northern Lite is one of the leading manufacturers and exporters of molded fiberglass truck campers in North America.

Mac Donkin continues to be actively involved in the everyday operation of this successful company.

The excellence of the Northern Lite Camper has been recognized by the RV Consumer Group who in their 2004 RV Rating Book awarded Northern Lite Campers their prestigious 5 Star Rating. This award was particularly gratifying because Northern Lite was the only truck camper manufacturer in North America to receive this honour.

In 2000, Northern Lite doubled the size of their manufacturing facility in Kelowna, B.C. and are now shipping their Truck Campers throughout Canada and into Alaska, Washington, Oregon, California and the other western states, and as far east as New Hampshire.



**Northern Lite holds the distinction of producing the *ONLY* campers to achieve a**

## **FIVE STAR RATING**

**for eight years running in the RV Rating Book as listed by the RV Consumer Group  
P.O. Box 520, Quilcene, Washington, 98376  
[www.rv.org](http://www.rv.org)**

### WHAT IS A 5-STAR RATING?

According to the RV Rating Book, "To get a 5-star rating, a brand needs to have an 'excellent' record of performance in Value, Reliability and Highway Control, indicated by ratings of 90 or higher."

One of the factors in the Value rating is depreciation. A high score in this indicates less depreciation on a product over the years.

Reliability is based on used RV appraisals and letters, claims, and commentaries from customers as well as owner satisfaction polls.

Highway Control rating is based on the balance and handling of the product.

Performance also includes the manufacturer's willingness to stand behind their product.



# F A C T O R Y T O U R

*Northern Lite Campers are built using fiberglass molds in a process similar to building a fiberglass boat.*



## STEP 1



*After a layer of Gelcoat is applied to the interior of the mold, a mixture of "chopped" fiberglass strands and a plastic resin is sprayed on top of the Gelcoat to form a very rigid, strong and light weight molded shell.*

## STEP 2



*Once both the top and bottom are pulled out of the molds, the top shell is placed over the bottom shell which has a plywood lip along its top.*

## STEP 3



*The top is screwed onto the bottom shell through this plywood lip. Using a metal molding, a vinyl insert is then used to cover up stainless steel screws.*

## STEP 4



*The camper then proceeds to the assembly line where openings for doors, windows, and exterior compartments are cut out and assembly begins.*



#### STEP 5



*As the camper moves down the assembly line, cupboards, cabinets and appliances are installed and the exterior is completed.*

#### STEP 6



*At the Final Inspection station, final finishing is completed and quality and systems checks are carried out.*

#### STEP 7



*The "Rain Test," that uses a sprinkler system, is the final test before the camper leaves the assembly line.*

#### STEP 8



*Before it leaves the Northern Lite Factory, each camper is individually weighed and the actual weight is noted inside the camper.*

#### STEP 9



*The finished camper is now ready to ship to one of our over 30 Authorized Dealers throughout North America.*



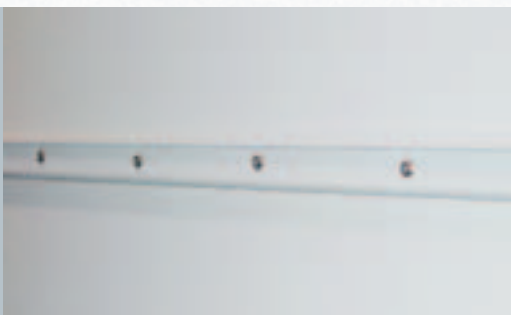
# SPECIAL CONSTRUCTION FEATURES

1



The top shell of the Northern Lite Camper is placed over the bottom shell and overlaps 2" to eliminate any possible chance of leakage.

2



Non rusting stainless steel screws are used to attach the top to the bottom and are also used on the exterior of our campers

3



A unique aerodynamic roof line gives extra strength to the roof and lessens wind resistance.

4



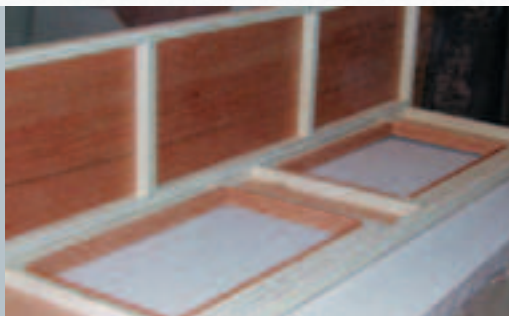
Steel jack brackets curve under the camper for extra support when lifting the camper. The brackets are screwed into 1" plywood backing.

5



Tie downs are welded to a 4"x6" piece of steel and mounted on 1" plywood for extra strength.

6



Cabinets are framed with strips of 3/4" plywood rather than spruce or pine, to get away from warped wood with knots, adding extra strength to cabinets.

7



Drawers are constructed using high quality Russian Birch and all drawer guides are metal.

8



No particle board or chip board anywhere!

9

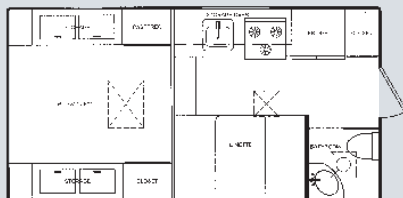


All wood paneling is "real" oak veneer, not a paper or vinyl overlay.

## 9'6" QUEEN CLASSIC SE – NEW FOR 2006

The new 9'6" Queen Classic SE Northern Lite Camper (for long box trucks) is the latest addition to our lineup of luxurious lightweight campers. Even though we have increased the width of this camper (now 8'2" wide) and increased the length of the bed (now 60"x80"), the weight still comes in at a surprisingly light 2150 lbs. Even with our Promotion Package and a few other convenient options, the new camper still weighs less than 2400 lbs.

We've patterned this camper after our very successful 8'11" Camper (for short box trucks) and lightened the new camper by using Dometic Acrylic Thermal Pane Windows (half the weight of conventional Thermal Pane Windows), our Nidacore flooring system, aluminum jack brackets, a Full Queen sized mattress and other proven weight-saving measures that do not affect the structural integrity of the camper.

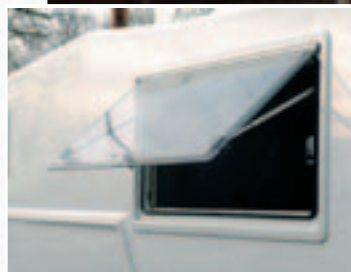


*9'6" Q Classic SE*

With face to face dinette Fits full size long box trucks







*See back page for 2007 color samples*

*Dometic Acrylic  
Thermal Pane Windows*

## STANDARD EQUIPMENT

- Two piece molded fiberglass
- 1" R6 block foam insulated walls, floor, roof
- 6.3 cu ft 3 way fridge – 2 door
- 18,000 BTU auto light furnace
- Power range hood
- 3 Burner stove top
- 2x20lb Propane cylinders
- 45 Amp converter c/w battery charger
- 6 Gallon hot water tank
- Bathroom c/w shower
- Fresh water toilet c/w holding tank
- Oak doors and trim packages
- Oak veneer paneling
- Marine headliner
- Screen door
- Quartz clock
- 26"x26" escape hatch
- 30 Amp power cord
- Mechanical jacks – white
- Pre-wire for electric jacks
- Folding assist handle
- Face to face dinette
- Dinette Bed 73" long
- Full Queen (60"W x 80"L x 6"D) high density foam mattress
- 10" Basement storage c/w 7'2" storage tray
- Heated and insulated tanks
- Extra large, stainless steel sink
- Tinted, acrylic thermal pane windows c/w screens and blinds (Dometic brand)
- Extra large (dual) battery box
- Ultra light Nidacore flooring
- Medicine cabinet in bathroom

## OPTIONAL EQUIPMENT

- Air conditioner
- Awning
- Bathroom vent – 12V \*
- Battery disconnect switch \*
- Boat rack and ladder
- Bedspread, pillows and shams
- Cable ready \*
- Dually swing out brackets
- Electric jacks
- Fantastic fan
- Folding step \*
- Hot water heater – DSI \*
- Monitor panel \*
- Microwave
- Outside shower \*
- Oven \*
- Privacy drape
- Promo package \*
- "Slide out" propane tray \*
- Rear bumper c/w step
- Rear view window c/w lens \*
- Removable carpet
- Roof rack and ladder \*
- Sapele pannelling
- Skylight
- Solar panel
- Stereo c/w speakers – CD player / DVD player
- Stove top cover \*
- Third vent
- TV pack c/w antenna

*\* The Promo package is an option package designed to save you \$\$\$. See your dealer for details.*

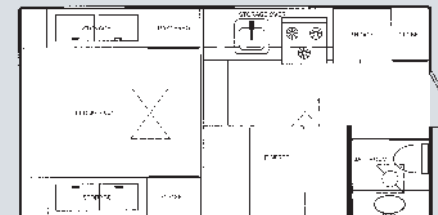


# 10'2" CD SPECIAL EDITION



## DISTINCTIVE FEATURES OF THIS SPECIAL EDITION

- Upgraded Dometic thermal pane acrylic windows
- 10' Side awning
- Additional battery box
- Battery disconnect switch
- Sliding propane tray
- Rear bumper c/w step
- Electric jacks
- Removable carpet
- Pre-wire for solar panel
- Stereo CD/DVD player
- LCD television c/w antenna
- Dometic lighted skylight/escape hatch
- Dometic microwave (in cupboard)
- Privacy drape
- Bedspread, pillow and shams
- Roof air conditioner
- Promo package
- Queen size bed



### 10'2" CD Special Edition

With face to face dinette Fits full size long box trucks



Dometic Acrylic Thermal Pane Windows are 50% lighter than conventional Thermal Pane Windows.



Battery disconnect switch.



Stereo CD/DVD Player.



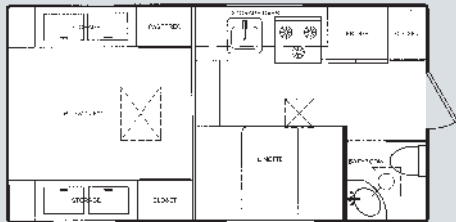
Interior of 10'2" Special Edition showing Dometic Lighted Skylight and LCD TV in bunk area and Dometic Acrylic Thermal pane Window in kitchen area.



# 8'11" QUEEN CLASSIC



The new 8'11" Northern Lite Camper (for short box trucks) is one of the lightest 8'11" campers in the market. We've lightened this camper by using Dometic Acrylic Thermal Pane windows (half the weight of conventional Thermal Pane windows), a new flooring system using Nidacore, aluminum jack brackets, a Full Queen sized foam mattress and by seeking out as many weight saving measures as we could find without affecting the structural integrity of the camper. The result is a base weight of 2050 lbs and a weight when nicely equipped of approximately 2240lbs.



## 8'11" Q Classic Series

With face to face dinette Fits full size short box trucks



SHOWN WITH  
OPTIONAL SAPELE  
PANNELLING



A pullout storage tray is standard equipment in our new 8'11" Camper



See back  
page for  
2007 color  
samples



Nidacore is plastic honey comb sandwiched between two sheets of luan plywood resulting in a much lighter floor compared to using standard plywood.

## STANDARD EQUIPMENT

- Two piece molded fiberglass
- 1" R6 block foam insulated walls, floor, roof
- 6.3 cu ft 3 way fridge – 2 door
- 18,000 BTU auto light furnace
- Power range hood
- 3 Burner stove top
- 2x20lb Propane cylinders
- 45 Amp converter c/w battery charger
- 6 Gallon hot water tank
- Bathroom c/w shower
- Fresh water toilet c/w holding tank
- Oak doors and trim packages
- Oak veneer paneling
- Marine headliner
- Screen door
- Quartz clock
- 26"x26" escape hatch
- 30 Amp power cord
- Mechanical jacks – white
- Pre-wire for electric jacks
- Folding assist handle
- Face to face dinette
- Full Queen (60"W x 80"L x 6"D) mattress
- 10" Basement storage c/w 7'2" storage tray
- Heated and insulated tanks
- Extra large, stainless steel sink
- Tinted, acrylic thermal pane windows c/w screens and blinds (Dometic brand)
- Extra large (dual) battery box
- Ultra light Nidacore flooring
- Medicine cabinet in bathroom

## OPTIONAL EQUIPMENT

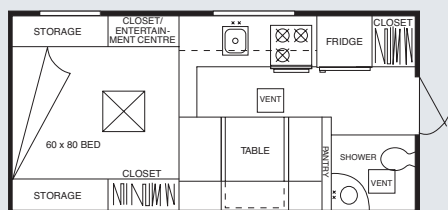
- Air conditioner
- Awning
- Bathroom vent – 12V \*
- Battery disconnect switch \*
- Boat rack and ladder
- Bedspread, pillows and shams
- Cable ready \*
- Dually swing out brackets
- Electric jacks
- Fantastic fan
- Folding step \*
- Hot water heater – DSI \*
- Monitor panel \*
- Microwave
- Outside shower \*
- Oven \*
- Privacy drape
- Promo package \*
- "Slide out" propane tray \*
- Rear view window c/w lens \*
- Rear bumper c/w step
- Removable carpet
- Roof rack and ladder \*
- Sapele panneling
- Skylight
- Solar panel
- Stereo c/w speakers – CD player / DVD player
- Stove top cover \*
- Third vent
- TV pack c/w antenna

\* The Promo package is an option package designed to save you \$\$\$. See your dealer for details.

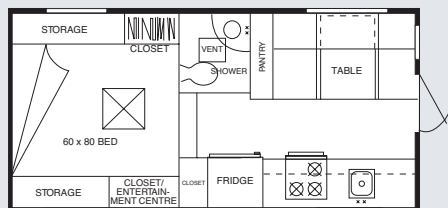


The Ten 2000 Series features a full 14" basement with heated and enclosed tanks. Units in this Series offer a 60 x 80 Queen sized north/south bed.

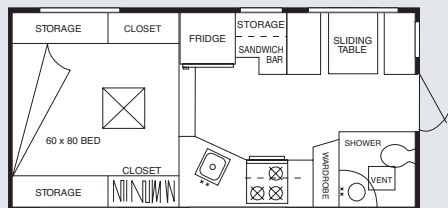
TEN 2000 CD



**Ten 2000CD 10'2" Northern Series Basement**  
With face to face dinette Fits full size long box trucks



**Ten 2000RD 10'2" Northern Series Basement**  
With face to face rear dinette Fits full size long box trucks



**Ten 2000RR 10'2" Northern Series Basement**  
With face to face dinette Fits full size long box trucks



**Ten 2000  
Northern Series  
(Basement)**





**TEN 2000 RD NORTHERN  
SERIES BASEMENT**



**TEN 2000 CD**



**TEN 2000 RR**

**SHOWN WITH  
OPTIONAL SAPELE  
PANNELLING**

## STANDARD EQUIPMENT

- Two piece molded fiberglass
- 1" R6 block foam insulated walls, floor, roof
- 6.3 cu ft 3 way fridge – 2 door
- 18,000 BTU auto light furnace
- Power range hood
- 3 Burner stove top
- 2x20lb Propane cylinders
- 45 Amp converter c/w battery charger
- 6 Gal. hot water tank
- Bathroom c/w shower
- Fresh water toilet c/w holding tank
- Oak doors and trim packages
- Oak veneer paneling
- Venetian blinds
- Marine headliner
- Large radius tinted windows
- Screen door
- Quartz clock
- 26"x26" escape hatch
- 30 Amp power cord
- Mechanical jacks – white
- Pre-wire for electric jacks
- Folding assist handle
- Face to face dinette
- Generator compartment

## OPTIONAL EQUIPMENT

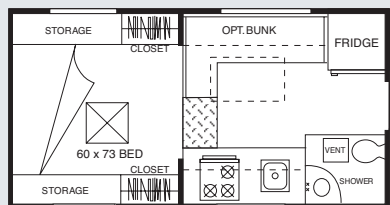
- Additional battery box
- Air conditioner
- Auto changeover L.P.G.
- Awning
- Bathroom vent – 12V \*
- Battery disconnect switch \*
- Boat rack and ladder
- Bedspread, pillows and shams
- Cable ready \*
- Dually swing out brackets
- Electric jacks
- Fantastic fan
- Folding step \*
- Generator ready \*
- 25,000 BTU Furnace (some models)
- Hot water heater – DSI \*
- Lyptus panneling
- Monitor panel \*
- Microwave
- Outside shower \*
- Oven \*
- Pleated shades
- Pre-wire for generator \*
- Pre-wire for solar panel
- Privacy drape
- Promo package \*
- "Slide out" propane tray
- Rear bumper c/w steps
- Rear view window c/w lens \*
- Removable carpet
- Roof rack and ladder \*
- Thermal pane windows
- Skylight
- Stereo c/w speakers – CD/DVD player
- Stove top cover \*
- Third vent
- TV pack c/w antenna

*\* The Promo package is an option package designed to save you \$\$\$. See your dealer for details.*

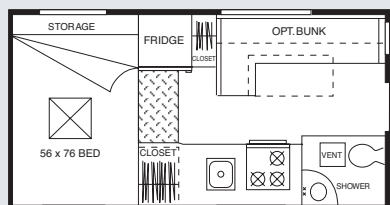
**See back page for  
2007 color samples**



The Classic Series is positioned between our Lite and Ten 2000 Series in both price and weight. This series offers heated and enclosed tanks in a “semi basement” camper.



*8'5" Q Classic Series*  
Fits full size short box trucks



*9'6" Classic Series*  
Fits full size long box trucks

**Classic  
Series**



**8'5" Q CLASSIC**





## STANDARD EQUIPMENT

- Two piece molded fiberglass
- 1" R6 block foam insulated walls, floor, roof
- 5.5 cu ft 3 way fridge
- 18,000 BTU auto light furnace
- Power range hood
- 3 Burner stove top
- 2x20lb Propane cylinders
- 45 Amp converter c/w battery charger
- 6 Gal. hot water tank
- Bathroom c/w shower
- Fresh water toilet c/w holding tank
- Oak doors and trim packages
- Oak veneer paneling
- Venetian blinds
- Marine headliner
- Large radius tinted windows
- Screen door
- Quartz clock
- 26"x26" escape hatch
- 30 Amp power cord
- Mechanical jacks – white
- Pre-wire for electric jacks

## OPTIONAL EQUIPMENT

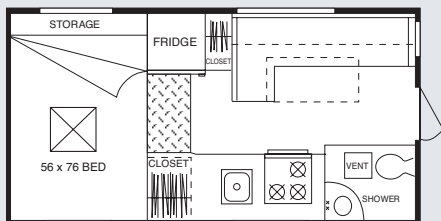
- Additional battery box
- Air conditioner
- Auto changeover L.P.G.
- Awning
- Bathroom vent – 12V \*
- Battery disconnect switch \*
- Boat rack and ladder
- Bedspread, pillows and shams
- Bunk kit
- Cable ready \*
- Dually swing out brackets
- Electric jacks
- Fantastic fan
- Folding step \*
- 3 Way fridge – 6.3 cu.ft. – 2 door
- Hot water heater – DSI \*
- Microwave
- Monitor panel \*
- Outside shower \*
- Oven \*
- Pleated shades
- Pre-wire for solar panel
- Privacy drape
- Promo package \*
- "Slide out" propane tray
- Rear view window c/w lens \*
- Rear bumper c/w stop
- Removable carpet
- Roof rack and ladder \*
- Thermal pane windows
- Sapele pannelling
- Skylight
- Stereo c/w speakers – CD/DVD player
- Stove top cover \*
- Third vent
- TV pack c/w antenna

*\* The Promo package is an option package designed to save you \$\$\$. See your dealer for details.*

**See back page for 2007 color samples**

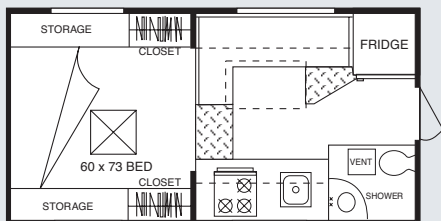


The Lite Series is our original line of low profile campers. Light weight and compact, this series is designed for trucks with less carrying capacity.



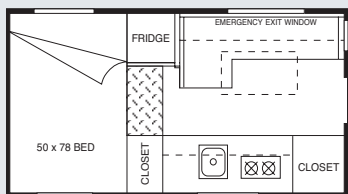
#### 9'6" Lite Series

Fits full size long box trucks



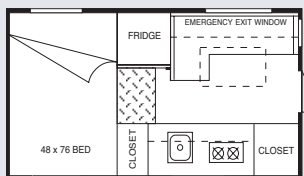
#### 8'5" Q Lite Series

Fits full size short box trucks



#### 8'4" Lite Series

Fits import short and long box trucks



#### 6'10" Lite Series

Fits import short and long box trucks



8'5" Q LITE



8'5" Q LITE



Optional awning



Optional boat rack

See back page for 2007 color samples

### STANDARD EQUIPMENT

- Two piece molded fiberglass
- 1" R6 block foam insulated walls, floors, ceiling
- 5.5 cu ft 3 way fridge (1.8 cu ft in 6'10", 3.0 cu ft in 8'4")
- 18,000 BTU auto light furnace
- Power range hood
- 3 Burner stove top (2 burner in 6'10", 8'4")
- 2x20lb Propane cylinders (1x20lb in 6'10", 8'4")
- 45 Amp converter c/w battery charger
- 6 Gal. hot water tank (optional 6'10", 8'4")
- Bathroom c/w shower (not available 6'10", 8'4")
- Fresh water toilet c/w holding tank (not available 6'10", 8'4")
- Oak doors and trim packages
- Oak veneer paneling
- Venetian blinds
- Marine headliner
- Large radius tinted windows
- Screen door
- Quartz clock
- 26"x26" escape hatch
- 30 Amp power cord
- Hydraulic jacks – white

### OPTIONAL EQUIPMENT

- Additional battery box
- Air conditioner
- Awning
- Bathroom vent – 12V \*
- Boat rack and ladder
- Bedspread, pillows and shams
- Cable ready \*
- Fantastic fan
- Folding step
- Hot water heater – DSI \*
- Microwave
- Monitor panel \*
- Outside shower \*
- Oven \*
- Pleated shades
- Pre-wire for electric jacks \*
- Pre-wire for solar panel
- Promo package \*
- "Slide out" propane tray (N/A 6'10" and 8'4")
- Rear view window c/w lens \*
- Removable carpet
- Roof rack and ladder \*
- Sapele panneling
- Skylight
- Thermal pane windows
- Stereo c/w speakers – CD/DVD player
- Stove top cover
- Third vent
- TV pack c/w antenna
- White mechanical jacks \*

\* The Promo package is an option package designed to save you \$\$\$. See your dealer for details.

**Lite  
Series**

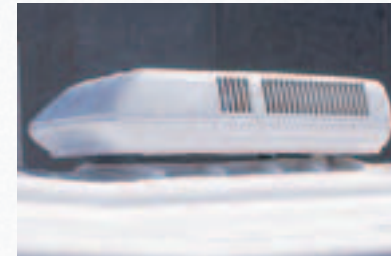


## Camper Specifications

	102" Northern Series Basement Ten 2000 RR	102" Northern Series Basement Ten 2000 RD	Classic Series Ten 2000 CD	Classic Series 9'6"	Classic Series 8'11" Q	Classic Series 9'6" Q SE	Classic Series 8'5" Q	Lite Series 9'6"	Lite Series 8'5" Q	Lite Series 8'4"	Lite Series 6'10"
Overall width (inches)	98	98	98	94	98	98	94	94	94	81	78
Overall length (inches)	207	207	207	175	191	198	175	175	175	155	135
Overall floor length (inches)	120	120	120	114	104	110	101	114	101	100	82
Overall height (inches)	97	97	97	88	90	90	88	82	82	79	75.5
Interior headroom (feet-inches)	6-5	6-5	6-5	6-3	6-3	6-3	6-3	6-4	6-4	6-2	5-11
Dinette bed (inches)	36x69.5	42x72	42x72	38x72	37x67	37x73	39x72	39x72	40x72	38x72	36x59
Table size (inches)	28.75x34	30x38	30x38	18x37	26x36	29x36	18x37	18x37	18x37	18x37	18x27
Mattress size (inches)	60x80	60x80	60x80	60x76	60x80	60x80	60x73	56x76	60x73	50x78	48x76
Fresh water tank (US gallons)	36	36	36	24	25	25	24	24	24	14.5	14.5
Waste tank (US gallons)	18	18	18	13	13	13	13	6	6	N/A	N/A
Gray tank (US gallons)	40	40	40	21.5	24	24	21.5	11	11	N/A	N/A
Hot water tank (US gallons)	6	6	6	6	6	6	6	6	6	6 (opt)	6 (opt)
Propane gas capacity (lbs)	40	40	40	40	40	40	40	40	40	20	20
Approximate dry weight (lbs)	2425	2425	2360	1900	2050	2150	1875	1725	1750	1280	1050

We reserve the right to change specifications without notice or consequence.

All Northern Lite products carry, in addition to the standard manufacturer's one year warranty, an inclusive three year structural integrity warranty.





# 2007 FABRIC COLORS



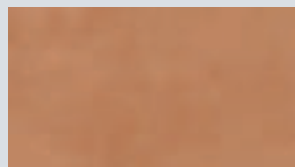
*Northern Lite holds the distinction of  
producing the **ONLY** campers to achieve a*

## **FIVE STAR RATING**

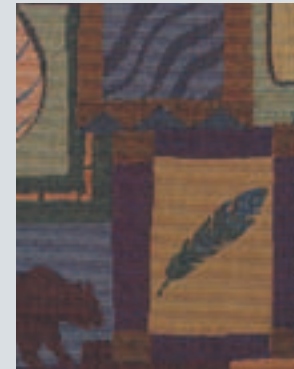
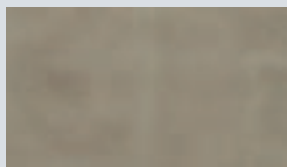
*for eight years running in the 2005 RV  
Rating Book as listed by the RV Consumer Group  
P.O. Box 520, Quilcene, Washington, 98376  
[www.rv.org](http://www.rv.org)*



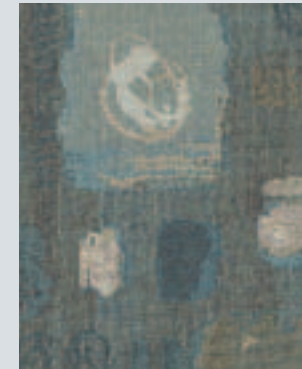
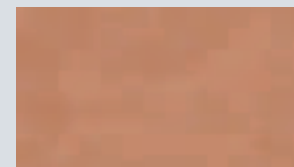
**Brew**



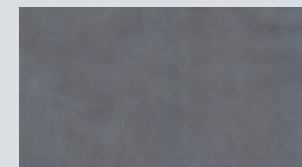
**Celery**



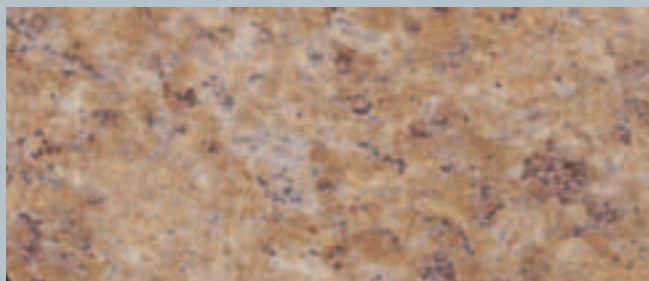
**Prairie**



**Slate**



Your Authorized Dealer:



**Counter Top**



PRINTED IN CANADA



Northern Lite Mfg. Ltd.  
322 Totom Court  
Kelowna, B.C.  
Canada V1X 5W6  
Telephone (250) 765-3702  
Fax (250) 765-3708  
Toll Free 1-800-887-5342  
E-mail: [info@northern-lite.com](mailto:info@northern-lite.com)  
[www.northern-lite.com](http://www.northern-lite.com)