



PACE ARROW-Floor Plans, Standard Features and Options

Pace Arrow

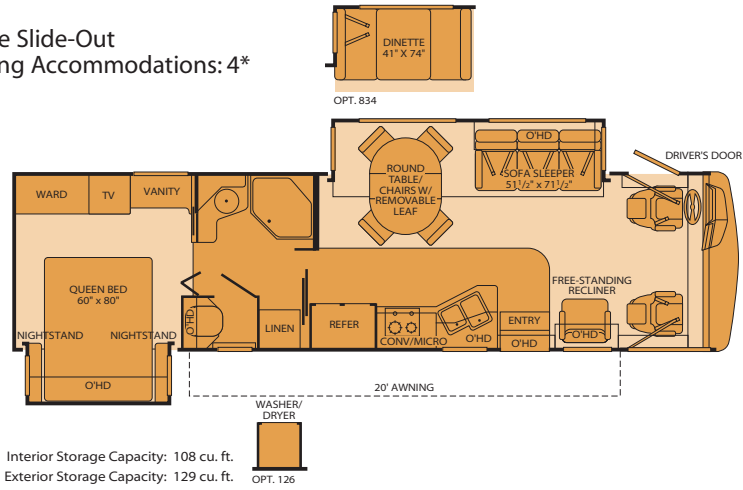


PACE ARROW-Class A Gas-2006

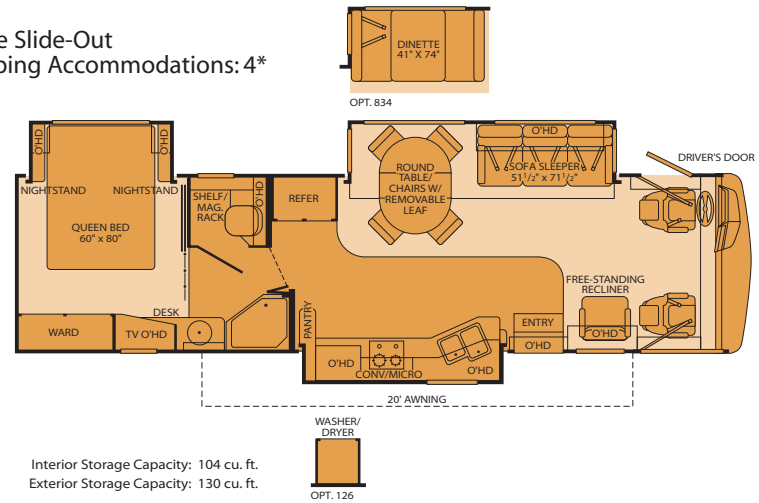


Floor Plans

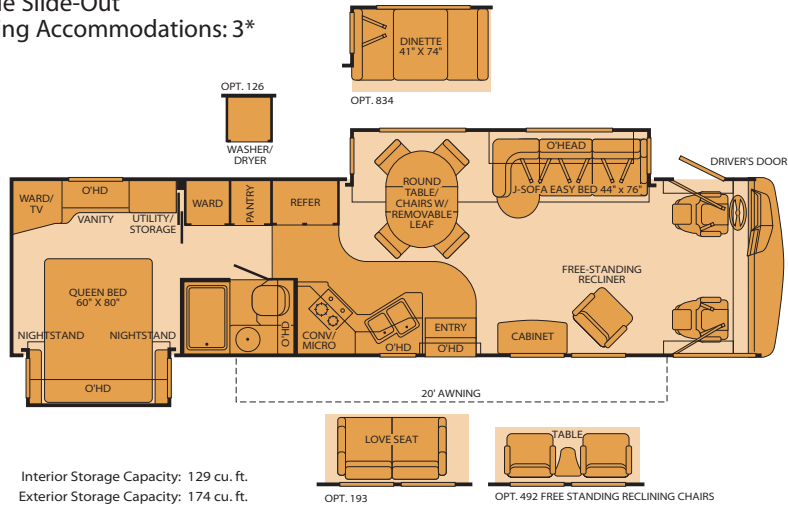
35G
Double Slide-Out
Sleeping Accommodations: 4*



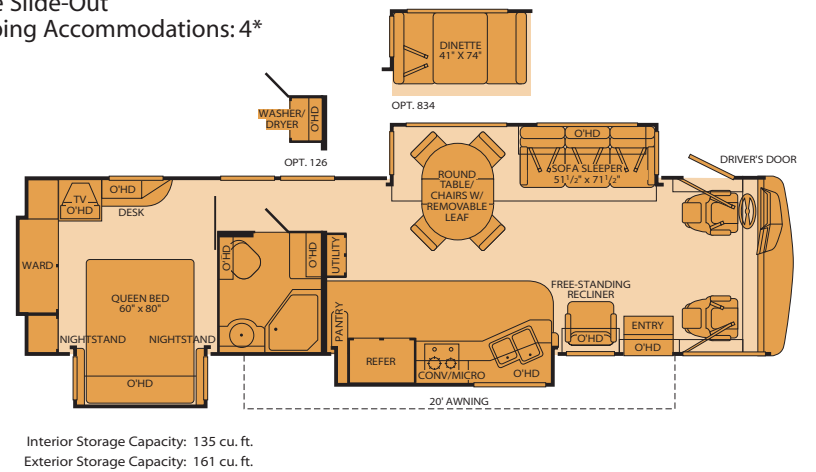
36B
Triple Slide-Out
Sleeping Accommodations: 4*



37A
Double Slide-Out
Sleeping Accommodations: 3*

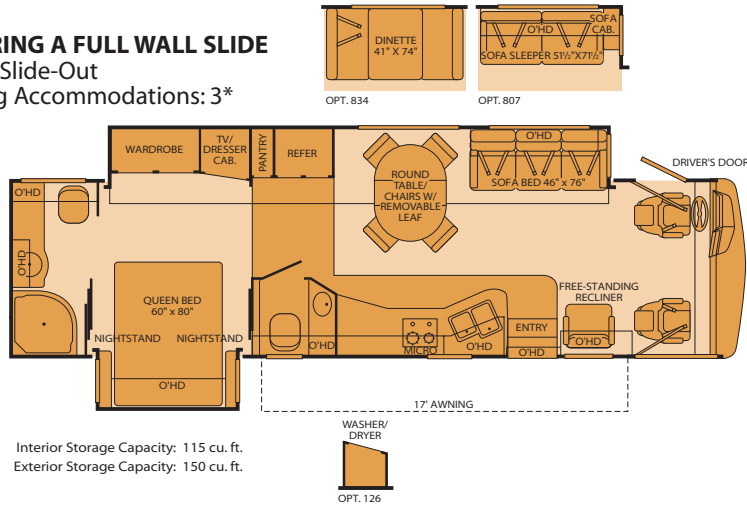


37C
Triple Slide-Out
Sleeping Accommodations: 4*

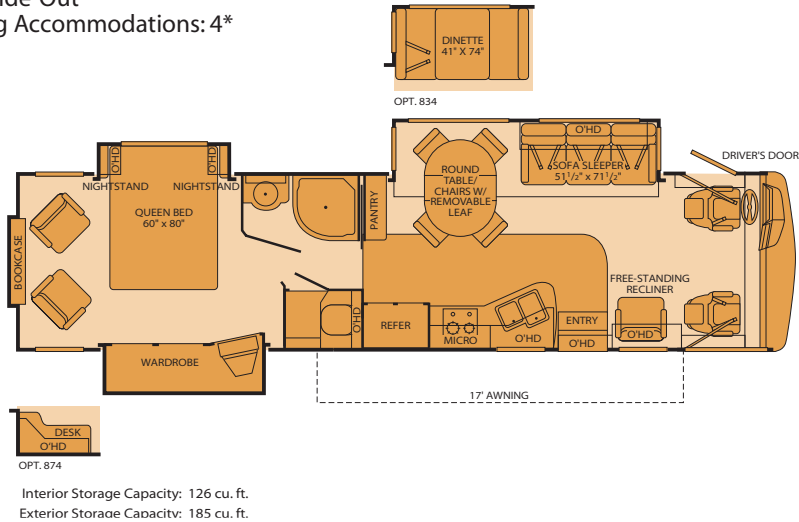


*Sleeping accommodations are based on designed sleeping areas and may be greater than Sleeping Capacity Weight Rating (SCWR) found on the Cargo Carrying Capacity label located in each RV. Sleeping accommodations are based on standard layout. Optional furniture may increase or decrease sleeping accommodations.

36D
FEATURING A FULL WALL SLIDE
 Double Slide-Out
 Sleeping Accommodations: 3*



38L
 Triple Slide-Out
 Sleeping Accommodations: 4*



Setting the Standard in Motor Home Quality.

Fleetwood® prototypes are exposed to thousands of miles of durability testing. Those components that don't survive are redesigned until they do. This sets our standard in safety and durability.

Royal Tuff-Ply roofing technology is one of the most durable roofing materials on the market and also reflects sunlight to reduce chalking. White roof material minimizes heat build-up, keeping the temperature cool and comfortable.

Reliable TuffPEX® plumbing runs throughout each vehicle creating a durable seal on all internal tubing. TuffPEX® assures water flow and functions in colder temperatures. The TuffPEX® system is an industry leader in quality plumbing.

For each outer wall, Fleetwood uses one seamless, solid piece of its exclusive Tuff-Coat® fiberglass composite. It resists UV rays, cracks and impacts. Our products look newer longer and that's a big plus at resale time.

To assure a strong, weather-resistant structure, Fleetwood Vacu-bonds® all sidewalls, floors and ceilings to a durable aluminum or steel frame. The Vacu-bond® process is unmatched by many competitors.

Fleetwood's patented Power Platform supports the body with a rigid frame that reinforces the chassis to make it even stronger. This allows Fleetwood to offer triple slide-outs.

Fleetwood sinks and shelves are designed to handle full-size kitchenware. Few competitors can say the same.

Seatbelt configuration may vary depending on options chosen.

Standard Features

Interior

THROUGHOUT

- **Alder-Stained Drawer Fronts & Raised Panel Cabinet Doors, Arched Designs, Glass Inserts in Select Locations**
- **Deluxe Roller Bearing, Full Extension Drawer Guides**
- **Dual Roof A/C High Efficiency w/Solar Panel and Chill Grills**
- **Whole Coach Water Filtration System**
- 10-Gallon, Quick-Recovery Water Heater w/Direct Spark Ignition (Gas/Electric)
- 120V/12V AC/DC Converter Central Electrical Panel

DRIVER CONVENIENCE

- **AM/FM/CD Radio, Satellite Ready**
- **Driver/Front Passenger Ultraleather™ Captain's Chairs w/Reclining Back/Slide Controls w/Power Driver Seat**
- 3-Point Seat Belts at Driver & Front Passenger Seats
- Auxiliary Start Circuit

LIVING ROOM

- **27" Flat Screen TV in Front Overhead**
- **DVD Home Theater Sound System**

GALLEY

- **12 cu. ft. Stainless Steel Dometic® Refrigerator w/Ice Maker**
- **Large Double Stainless Steel Sink**
- 2-Burner Cooktop with Sealed Burners
- Built-In Galley Cutting/Bread Board (Select Models)
- Coffee Maker
- Fan-Tastic® Power Roof Vent

BEDROOM

- **20" Flat Screen TV**
- **Restonic® Deluxe Pillow Top Innerspring Mattress**

BATHROOM

- **Shower Dispenser for Lotion, Shampoo, Soap, Etc.**
- **Single Lever Shower Control, Brushed Nickel, w/Slide Adjustable Shower Head & Soap Dish**

SAFETY/CONVENIENCE

- 10 ABC Fire Extinguisher
- Carbon Monoxide Detector/Alarm

- 3-Way Water Pump Switch
- 4 Striking Interior Theme Decors
- 5.5kW Onan® Quiet Generator
- 50 AMP Service
- Armstrong® Solarian® Vinyl Floor Covering
- Automotive Wire Harnesses
- Battery Disconnects
- Brushed Nickel Finish Cabinet Hardware
- Centralized Monitor Panel w/Slide-Out Controls
- Decor Lighting
- Dual 6V/Deep-Cycle House Batteries
- Engine Cover Convenience Tray

- Computer Workstation in Dash
- Cruise Control
- Dash Fans
- Denso® Intermittent Wiper Controls
- Digital Compass & Outside Temperature Gauge
- Double-Swivel Sun Visors w/Map Pockets

- Dual Glazed Slider Windows w/Day/Night Shades
- Flush Floor Living Room Slide-Out
- Free-Standing Reclining Chair w/Security Bracket

- Freestanding Dinette Table w/Leaf & Four Chairs (2 Folding Chairs)
- Ironing Board Conveniently Slides into Galley, Stores Under Bed (Select Models)
- Mirrored Galley Backsplashes
- Over the Range Convection Microwave Oven, Stainless w/Built-in Rangehood & Light
- Radius Corner Cabinetry

- Bedsread w/Deluxe Fabric Headboard
- Rear Speakers
- Second Phone Jack

- Beveled Mirror in Lavy
- Brushed Nickel Bath Accessories
- Brushed Nickel Metal Designer Lavy Faucet
- Fan-Tastic® Power Roof Vent
- Molded Acrylic Shower

- Entry Assist Handle
- Propane Detector/Alarm

- Fabrica® Nylon Carpet w/Pad
- Fluorescent Ceiling Lights w/Dual Bulbs
- Incandescent Lighting
- Solid Divider Doors
- Telephone Jack in Dash
- Vinyl Ceiling, Cushioned
- Wall Switches
- Water Heater Bypass
- Wood Drawers

- Driver's Door w/Power Window Lift
- DSS Manual Lift Satellite Dish
- ICC Switch
- Low Profile Engine Cover
- Radio Switch-Main/Auxiliary Power
- Tilt Steering Wheel

- Hi-Fi VCR
- TV Antenna
- Ultraleather™ Furniture w/Throw Pillows

- Single-Lever Galley Faucet w/Pullout Sprayer
- Slide-Out Dinette Bins w/Optional Fixed Dinette
- Soap Dispenser
- Solid Surface Countertops
- Solid Wood Dinette Table Tops
- Wastebasket
- Wine Cabinet (37A Only)

- Wardrobe Lighting
- Wardrobes w/Mirrored Doors, Cedar Lining & Wire Shelf

- Porcelain Toilet w/Water-Saver
- Skylight in Tub/Shower
- Solid Wood Lavy Door
- Toilet Tank San-T-Flush™ System

- Smoke Detector/Alarm

Exterior

THROUGHOUT

- **Awning Rail/Drip Molding (Both Sides)**
- **Utility Compartment w/Exterior Shower**
- 3 Graphic Colorways to Match Decor
- Accessory Propane Supply w/Hose**
- Aluminum Tube Front Grille
- Coach Vibration Isolators

AUTOMOTIVE

- **4-Point Automatic Leveling Jacks**
- 5,000 lb. Trailer Hitch w/7-Point Electrical Hook-Up†
- (6,000 lb. w/W24 Chassis)

SAFETY/CONVENIENCE

- **Rear Vision Camera w/One-Way Audio**
- Double Power Entry Step w/Light
- Dual Halogen Headlights
- Entry Door w/Screen Door & Deadbolt Lock

STORAGE

- **Rotomolded Polyethylene Luggage Compartments**
- Continuous One-Piece Compartment Bulb Seal

BODY STRUCTURE

- **Royal Tuff-Ply Radius Roof w/Ducted A/C**
- **Vacu-bond® Upper/Lower Floors**

- Dual Battery Charge Control
- Dual Chrome Electric Horns
- Dual Patio Receptacles
- Fiberglass Front/Rear Caps
- Fiberglass Wheel Well Trims
- Flush Mounted Furnace & Water Heater
- Heated Water & Holding Tank Compartments

† The chassis manufacturer recommends the installation of a supplemental brake control system to activate the brakes on the vehicle or trailer you are towing. Hitch receiver ratings expressed are maximum for the hitch receiver installed and may require the purchase of additional equipment that is dependent on the weight of the towed load. Consult with hitch receiver manufacturer for further information.

- Large, Heated Remote Rear View Mirrors
- Porch Light (Doorside & Roadside)
- Roof Ladder
- Single Motor Windshield Wipers w/Wet Arm

- Gas-Lift Strut Supports
- Insulated Aluminum Luggage Doors w/Single Paddle Metal Latches & Stainless-Steel Hinges

- **Vacu-bond® Walls w/Smooth, High-Gloss Exterior Fiberglass**
- Aluminum Interlocking

- Large, Curved Aerodynamic Windshield
- Mud Flaps
- Park Cable Receptacle
- Patio Awning
- Stainless Steel Wheel Simulators
- Ultimate Sewer Hose
- Wrap-Around Euro Design Taillights

- Swing-Up Engine Access Door
- Underhood Utility Light

- Lighted Luggage Compartments
- Steel Luggage Door Seal Frames

- Floor/Wall/Ceiling Framing
- Basement Floor Configuration
- Steel Surface on Bulkhead

Options

DRIVER CONVENIENCE

- Auto Locating Satellite Dish
- Driver/Passenger Shades w/Electronic Sun Visor
- Sirius® Satellite Radio

BEDROOM

- Washer/Dryer (Select Models)
- Queen Bed Air Mattress

GALLEY

- Fixed Dinette w/Solid Wood Table & Ultraleather™, High Resiliency Foam Cushions

AUTOMOTIVE

- CSA Package
- Ford® Chassis 6.8L Triton® V10 Engine

- Workhorse™ Chassis 8.1L Vortec™ V8 Engine-W22 or W24

EXTERIOR

- 6 Colorways w/Full Body Paint
- Dual A/C w/Heat Pump w/Solar Panel on Front A/C
- Electric Awning (Standard on 36B & 37C)

Fleetwood Advantages

- **Complete TuffPEX® Plumbing System**
- **Royal Tuff-Ply UV-Resistant Heat/Cold Insulated Roofing Technology**

- **Vacu-Bond® Upper/Lower Floors**
- **Vacu-Bond® Walls w/Smooth High-Gloss Exterior Tuff-Coat® Fiberglass**

Fleetwood Exclusives

- **Power Platform Construction**
- **The Full Wall Slide is Fleetwood's Patent Pending Structural Design**

- **and Exclusively Uses PowerGear's Slide System Technology, Validated by Extensive Durability,**

- **Laboratory and Track Testing to Ensure High Reliability and High Quality.**

* Bold Denotes Fleetwood's Key Features

** CSA standards may require substitution or deletion to achieve conformance

Weights and Measurements

WORKHORSE™ CHASSIS	35G	36B	36D	37A	37C	38L
Engine Displacement (Liters)	8.1	8.1	8.1	8.1	8.1	8.1
Wheelbase (Inches)	228	228	228	242	242	242
GVWR (lbs) ¹ (W22/W24)	22,000/N/A	22,000/24,000	22,000/24,000	22,000/24,000	22,000/24,000	22,000/24,000
Front GAWR (lbs) ² (W22/W24)	8,000/N/A	8,000/9,000	8,000/9,000	8,000/9,000	8,000/9,000	8,000/9,000
Rear GAWR (lbs) ² (W22/W24)	14,500/N/A	14,500/15,500	14,500/15,500	14,500/15,500	14,500/15,500	14,500/15,500
Base Weight (lbs) ³ (W22/W24)	18,600/N/A	19,100/19,200	19,100/19,200	18,600/18,700	19,500/19,600	19,550/19,650
GCWR (lbs) ⁴ (W22/W24)	26,000/N/A	26,000/30,000	26,000/30,000	26,000/30,000	26,000/30,000	26,000/30,000
Hitch Rating Weight (lbs) ⁵ (W22/W24)	5,000/N/A	5,000/6,000	5,000/6,000	5,000/6,000	5,000/6,000	5,000/6,000
Tongue Weight (lbs) ⁵ (W22/W24)	500/N/A	500/600	500/600	500/600	500/600	500/600
Fuel Capacity (gal)	75	75	75	75	75	75

FORD® CHASSIS						
Engine Displacement (Liters)	6.8	6.8	6.8	6.8	6.8	6.8
Wheelbase (Inches)	228	228	228	242	242	242
GVWR (lbs) ¹	22,000	22,000	22,000	22,000	22,000	22,000
Front GAWR (lbs) ²	7,500	7,500	7,500	7,500	7,500	7,500
Rear GAWR (lbs) ²	13,500	13,500	13,500	13,500	13,500	13,500
Base Weight (lbs) ³	18,150	18,650	19,150	18,430	19,220	19,300
GCWR (lbs) ⁴	26,000	26,000	26,000	26,000	26,000	26,000
Hitch Rating Weight (lbs) ⁵	5,000	5,000	5,000	5,000	5,000	5,000
Tongue Weight (lbs) ⁵	500	500	500	500	500	500
Fuel Capacity (gal)	75	75	75	75	75	75

DIMENSIONS AND CAPACITIES						
Overall Length ⁵	35' 8"	36' 2"	36' 2"	37' 8"	37' 8"	38' 2"
Overall Height (with A/C)	12' 10"	12' 10"	12' 10"	12' 10"	12' 10"	12' 10"
Overall Width (maximum) ^{6,7}	102"	102"	102"	102"	102"	102"
Interior Height (maximum)	84"	84"	84"	84"	84"	84"
Interior Width (maximum)	96"	96"	96"	96"	96"	96"
Fresh Water Holding Tank (gal)	80	80	80	80	80	80
Grey Water Holding Tank (gal)	58	58	58	58	58	58
Black Water Holding Tank (gal)	47	42	42	42	42	42
Appliance Propane Tank (gal) (WC) ⁸	25	25	25	25	25	25
Water Heater Tank (gal)	10	10	10	10	10	10

Liquid Weight Reference: Water (gal) = (8.3 lbs/3.8 kgs) Fuel (gal) = (6.1 lbs/2.8 kgs) Propane (gal) = (4.2 lbs/1.9 kgs)

Metric Conversion: Multiply pounds x 0.453 to obtain kilograms. Multiply gallons x 3.785 to obtain liters.

CHASSIS

Model: Ford®/Workhorse™	Alternator Amps: 130 Amp/145 Amp
Engine: 6.8L Triton® V10/8.1L Vortec™ V8	Horsepower: 362 HP @ 4750 RPM/340 HP @ 4200 RPM
Torque: 457 lb-ft @ 3250 RPM/ 455 lb-ft @ 3200 RPM	Transmission: TorqShift™ 5-Speed Automatic Overdrive w/Tow/Haul Mode/ 6-Speed Automatic with Overdrive – Allison® 1000 (W22) 2100 (W24) Series

1. GVWR (Gross Vehicle Weight Rating) is the maximum permissible weight of this fully loaded motor home. The GVWR is equal to or greater than the sum of the unloaded vehicle weight plus the cargo carrying capacity.

2. GAWR (Gross Axle Weight Rating) is the maximum permissible loaded weight a specific axle is designed to carry.

3. Base Weight is the estimated weight of the motor home without fuel, options, water, cargo or passengers.

4. GCWR (Gross Combined Weight Rating) is the value specified by the motor home manufacturer as the maximum allowable loaded weight of this motor home with its towed vehicle. Towing and braking capacities may be different. Refer to Fleetwood and chassis manufacturer's manuals for complete information.

5. Length taken from front bumper to rear bumper (excludes accessories).

6. Excludes safety equipment and awnings.

7. Motor homes feature a body-width over 96" which will restrict your access to certain roads. Before purchasing, you should research any state and/or province road laws which may affect your usage.

8. Tank manufacturer's listed water capacity (WC). Actual propane capacity is 80% of water listing as required by the safety code.

† The chassis manufacturer recommends the installation of a supplemental brake control system to activate the brakes on the vehicle or trailer you are towing. Hitch receiver ratings expressed are maximum for the hitch receiver installed and may require the purchase of additional equipment that is dependant on the weight of the towed load. Consult with hitch receiver manufacturer for further information.

N/A = Not Applicable

IMPORTANT — PLEASE READ: Product information, photography and illustrations included in this publication were as accurate as possible at the time of printing. For further product information and changes, please visit our website at www.fleetwoodrv.com or contact your local Fleetwood dealer. Prices, materials, design and specifications are subject to change without notice. All weights, fuel, liquid capacities and dimensions are approximate. Fleetwood has designed its recreational vehicles to provide a variety of uses for its customers. Each vehicle features optimal seating, sleeping, storage and fluid capacities. The user is responsible for selecting the proper combination of loads (i.e. occupants, equipment, fluids, cargo, etc.) to ensure that the vehicle's capacities are not exceeded.

What Drives You?

Maybe it's feeling like you're the only one on Earth. Perhaps it's the unique sense of closeness with the great outdoors. Or, it might be the joy that comes from spending quality time with family and friends. Whatever the reason, we know that you have a strong drive to experience everything that comes with spending time on the road. And for more than 50 years, we've shared that passion with you. Because we're RV enthusiasts ourselves, you can see our passion in the vehicles we design and build. Own a Fleetwood, and you'll feel like you're not just traveling, but embarking on an experience unlike any other. Set your own course for adventure and get out there and explore the world around you. Once you do, you'll see what it is that drives us — it's you.



RV OWNERCARE* is a limited one-year/15,000-mile coach warranty and three-year/50,000-mile structural warranty, whichever occurs first, and it is fully transferable for the first 12 months. RV OWNERCARE is one of the RV industry's most comprehensive programs and includes systems, appliances, components and construction, with no deductible and no service charge. RV OWNERCARE coverage is provided from a company that will be around in the future to service your needs. See your nearest Fleetwood dealer for a full explanation of benefits and restrictions.

FLEETWOOD TRAVELCADE CLUB As a Fleetwood owner, you're eligible to become a member of our owners' group, Fleetwood Travelcade Club. It's a perfect way to meet other Fleetwood owners who love to travel across America and share in the RV lifestyle. Call (877) 577-2560 or visit www.fleetwood.com/clubs to learn more and join the fun!

FLEETWOODRV.COM To locate a dealer near you, visit our website or call 1-800-444-4905. We can also be contacted at Fleetwood Customer Relations, P.O. Box 7638, Riverside, CA 92513-7638.

IMPORTANT—PLEASE READ Product information, photography and illustrations included in this publication were as accurate as possible at the time of printing. For further product information and changes, please visit our website at www.fleetwoodrv.com or contact your local Fleetwood dealer. Prices, materials, design and specifications are subject to change without notice. All weights, fuel, liquid capacities and dimensions are approximate. Fleetwood has designed its recreational vehicles to provide a variety of uses for customers. Each vehicle features optimal seating, sleeping, storage and fluid capacities. The user is responsible for selecting the proper combination of loads (i.e.: occupants, equipment, fluids, cargo, etc.) to ensure that the vehicle's capacities are not exceeded.

Your local Fleetwood dealer is:



www.fleetwoodrv.com

*For complete info see your Fleetwood dealer. ©2005. Fleetwood Enterprises, Inc.
Printed in the USA. Inventory control number PA06F2 10/05.

tread lightly!
LEAVING A GOOD IMPRESSION

