

ULTRA-LITE TRAVEL TRAILERS

2000 *Palomino*

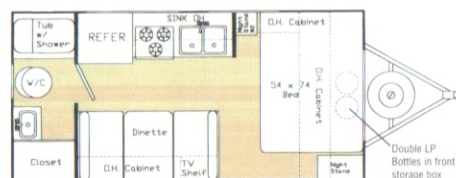
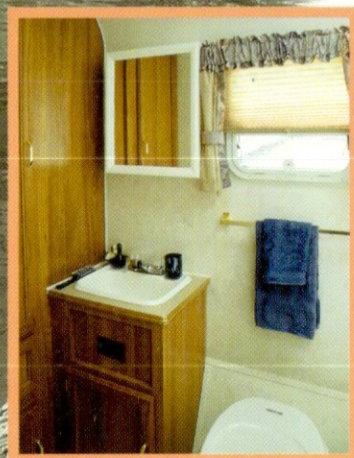


ULTRA-LITE TRAVEL TRAILERS

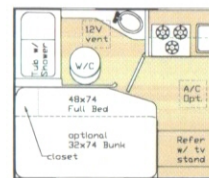
If you're looking for a quality built Ultra-Lite Weight Travel Trailer to pull behind your Mini-Van or Sport Utility Vehicle- look no further!

Palomino Thoroughbred Travel Trailers offer much more than just super quality construction. They also will provide you with beauty, comfort and a lot of great memories. Check out the many features of the Thoroughbred Ultra-Lite Weight Travel Trailers and compare.

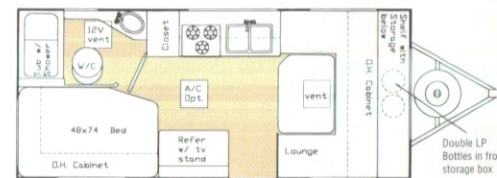
Floor Plans



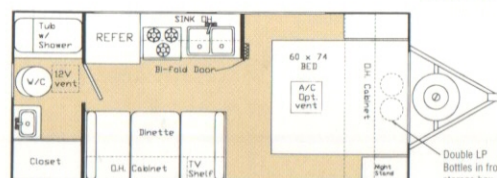
T19 FB



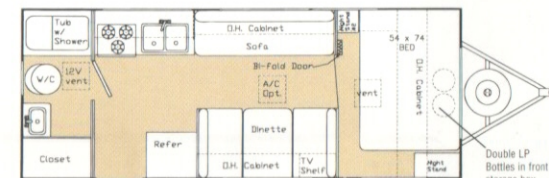
**Overhead Bunk Option-
T-21-DB**



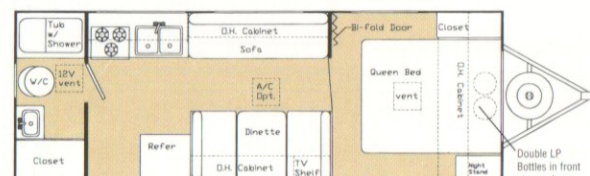
T21 DB



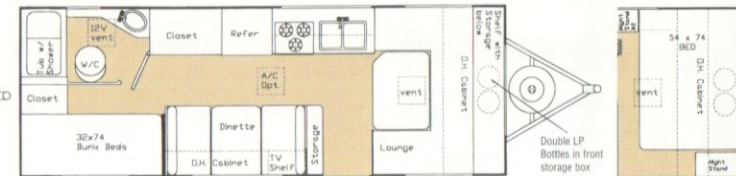
T21 FB



T23 FB



T25 FB



T25 BH

**Front B
Option
T-25 BH**

SPECIFICATIONS	T-19FB	T-21DB	T-21FB	T-23FB	T-25FB	T-25BH
GVWR (lbs.)	4720	4770	4760	4740	4700	4850
Axle Weight	2470	2580	2646	2848	2990	2910
Hitch Dry Weight (lbs.)	320	370	360	340	300	450
Gross Dry Weight (lbs.)	2790	2950	3006	3188	3290	3360
Carrying Capacity (lbs.)	1930	1820	1754	1552	1410	1490
Exterior Length	19'8"	21'8"	21'8"	23'8"	25'8"	25'8"
Exterior Width	90"	90"	90"	90"	90"	90"
Exterior Height	102"	102"	102"	102"	102"	102"
Interior Height	76"	76"	76"	76"	76"	76"
Fresh Water Holding Tank (Gal.)	25	25	25	25	25	25
Gray Water Holding Tank (Gal.)	30	30	30	30	30	30
Black Water Holding Tank (Gal.)	30	30	30	30	30	30
Optional Awning (Length Ft.)	11	13	13	15	17	17

All Palominos built to comply with RVIA codes, and American National Standards Institute regulations. Specifications subject to change without notice. Specifications in this brochure are based on information at time of publication. Vanguard Industries of Michigan, Inc., reserves the right to make changes in materials, components and specifications and to discontinue models at any time without notice or obligation. Depending on materials from time to time, weights may vary plus or minus five percent.





FEATURES AND OPTIONS

EXTERIOR

	T-19	T-21	T-23	T25
Fully Decked Laminated Roof	S	S	S	S
EPDM Rubber Roof	S	S	S	S
Laminated, Smooth Fiberglass Exterior	S	S	S	S
Foam Insulated Walls/Floor/Roof	S	S	S	S
Laminated, under belly	S	S	S	S
Four Screw Down Style Stabilizer Jacks	S	S	S	S
Recessed Front Awning Window	S	S	S	S
Spare with Cover	0	0	0	0
Enclosed Dbl. 20 lb. LP Gas Bottles w/Regulator	S	S	S	S
Awning	0(11')	0(13')	0(15')	0(17')
White Framed Radius Windows	S	S	S	S
Radius Entrance Door	S	S	S	S
Second Entrance Door (T-25FB Only)	N/A	N/A	N/A	0
Alko Torsion Axle (10" Brakes)	S	S	S	S
Outside Fresh Water Tank Fill	S	S	S	S
City Water Hook-Up	S	S	S	S
Slide Away Step	S	S	S	S
Awning Rail	S	S	S	S
Sewer Hose Storage Compartment	S	S	S	S

INTERIOR

13.5 Air Conditioner	0	0	0	0
TV Shelf	S	S	S	S
Vented Battery Box	S	S	S	S
Sofa Bed	N/A	N/A	S	S
Positive Catch Hardware	S	S	S	S
AM/FM Stereo/Cassette	0	0	0	0
AM/FM Stereo CD Player	0	0	0	0
Vinyl Floor Covering	S	S	S	S
Framed Cabinet Doors and Drawer Fronts	S	S	S	S
House Type Window Curtains with Valance	S	S	S	S
Aluminum Window Blind (Kitchen Area)	S	S	S	S
Interspring Mattress (Bedroom Models)	S	S	S	S
Deluxe Fabric Cushions	S	S	S	S
TV Cable Ready	S	S	S	S
Amplified TV Antenna	0	0	0	0

BATH AND VANITY

Toilet	S	S	S	S
Shower	S	S	S	S
12 Volt Power Roof Vent	S	S	S	S
Medicine Cabinet with Mirror	S	S	S	S
ABS Tub and Sink	S	S	S	S

FEATURES AND OPTIONS

APPLIANCES/GALLEY

	T-19	T-21	T-23	T25
Power Range Hood with Fan & Light	S	S	S	S
Sink Covers	0	0	0	0
Dometic 4 Cu. Ft./3-Way Refrigerator	S	S	N/A	N/A
Dometic 6 Cu. Ft./Double Door Refrigerator	N/A	N/A	S	S
Three-Burner Range	S	S	S	S
Three-Burner Range with Oven	0	0	0	0
Double Stainless Steel Sink	S	S	S	S
Chrome High Rise Faucet (Kitchen)	S	S	S	S
Six Gallon Quick Recovery Water Heater	S	S	S	S
Water Heater By-Pass Kit	S	S	S	S
Permanently attached Hinged Table (Side Dinette Models)	N/A	N/A	S	S
Microwave Oven	0	0	0	0
Demand Water Pump	S	S	S	S
Bi-Fold Range Cover	0	0	0	0
20,000 BTU Ducted Furnace	S	S	S	S

ELECTRIC

Pre-Wired for Optional Microwave	S	S	S	S
Pre-Wired for Optional Air Conditioner	S	S	S	S
12 Volt Interior Lights	S	S	S	S
110 Volt Outside Receptacle with GFI	S	S	S	S
28 Ft. Power Cord—30 AMP	S	S	S	S
Systems Monitor Panel	0	0	0	0
Converter with Charger (AMPS)	35	35	35	35

SAFETY

GFI Protected Receptacles	S	S	S	S
Smoke Detector	S	S	S	S
LP Gas Detector	S	S	S	S
Patio Light with Interior Switch	S	S	S	S
Keyed Dead Bolt Entry Lock	S	S	S	S
Entry Assist Handle	S	S	S	S
Fire Extinguisher	S	S	S	S
Radius Safety Glass Windows	S	S	S	S

