

Palomino



2003 TRAVEL TRAILERS & FIFTH WHEELS

Stampede Ultra Lite Travel Trailers

STANDARD FEATURES

- EPDM Rubber Roof • Aluminum Framed Laminated Construction • Laminated, Smooth Fiberglass Exterior • Foam Insulated Walls/Floor/Roof • Laminated Under Belly • Four-Screw Down Style Stabilizer Jacks • Dbl. 20 Lb.. LP Gas Bottles with Regulator • ALKO Torsion Axle (10" Brakes) • Slide Away Step • Sewer Hose Storage Compartment • TV Cable Ready • Knife Rack (with Oven) • Fabric Window Shades • 12 Volt Power Roof Vent • Medicine cabinet w/Mirror • Power Range Hood w/Fan & Light • 5 Cu. Ft./2-Way Refer

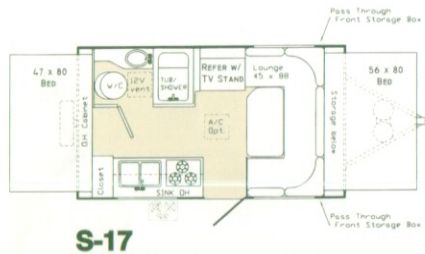
- Toilet & Shower • Six Gallon Quick Recovery Water Heater • Demand Water Pump • 20,000 BTU Furnace • Pre-Wired for optional Microwave • Pre-Wired for Optional Air Conditioner • Silverware Tray • 110 Volt Outside Receptacle with GFI • 28 Ft. Power Cord - 30 AMP • Converter with Charger • GFI Protected Receptacles • Smoke Detector • LP Gas Detector • Keyed Dead Bolt Entry Lock • Radius Safety Glass Windows • Three-Burner Range • Patio Light w/Interior Switch • Spice rack

ACCESSORY PACKAGE

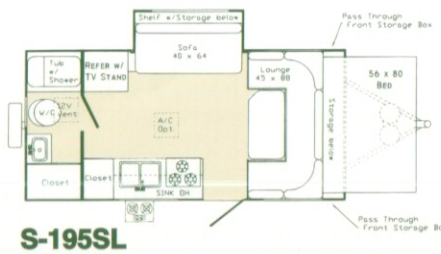
- TV Antenna • Outside Stove • Outside Shower • Systems Monitor Panel • Spare Tire & Cover • Range Cover • Sink Cover • LP Bottle Cover • Battery Box • Safety Glass • Sand Pads • Awning

POPULAR OPTIONS

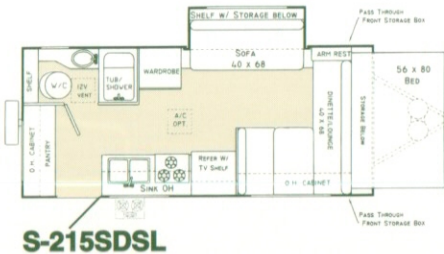
- Air Conditioner (13.5) • Microwave
- Three-Burner Stove w/Oven • AM/FM Stereo with CD Player • DSI Water Heater
- Bunk Light • Outside Service Lights
- Sliding Storage Tub (where applicable)
- Slide Topper Awning



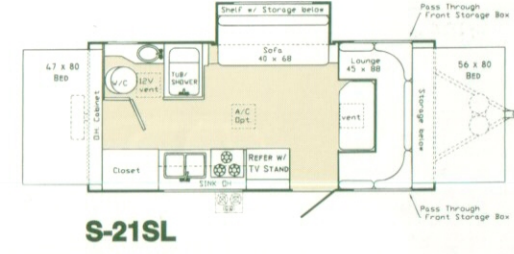
S-17



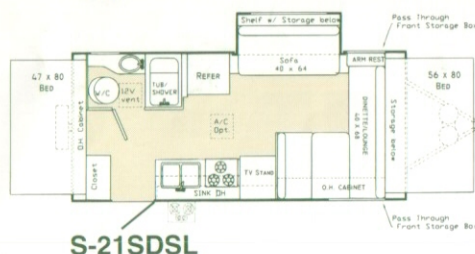
S-195SL



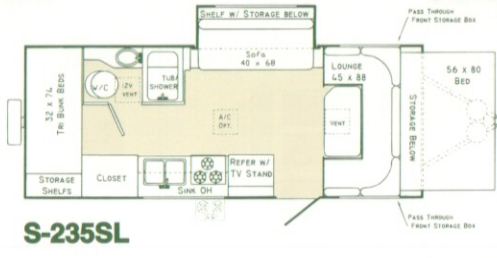
S-215SDSL



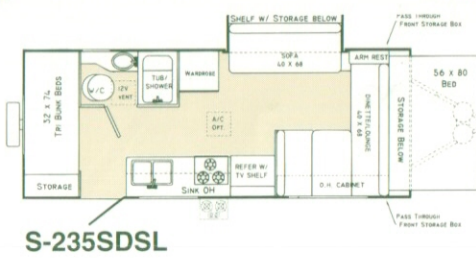
S-21SL



S-21SDSL



S-235SL



S-235SDSL

Stampede Ultra Lite Travel Trailers Specifications

Model	GVWR	Hitch Dry Weight	Dry Axle Weight	Carrying Capacity	Interior Height	Exterior Height	Exterior Width	Overall Length	Open Length	Fresh Water Capacity	Gray Water Capacity	Black Water Capacity
S-17	3,500 lbs.	310 lbs.	2,062 lbs.	1,128 lbs.	76"	101"	91"	16' 11"	21' 4"	22 Gals.	30 Gals.	30 Gals.
S-195 SL	4,400 lbs.	281 lbs.	2,778 lbs.	1,341 lbs.	76"	101"	91"	19' 8"	20' 3"	31 Gals.	30 Gals.	30 Gals.
S-215 SDSL	5,000 lbs.	480 lbs.	2,859 lbs.	1,661 lbs.	76"	101"	91"	21' 3"	21' 10"	31 Gals.	30 Gals.	30 Gals.
S-21 SL	5,000 lbs.	437 lbs.	2,747 lbs.	1,816 lbs.	76"	101"	91"	21' 3"	25' 8"	31 Gals.	30 Gals.	30 Gals.
S-21 SDSL	5,000 lbs.	480 lbs.	2,939 lbs.	1,581 lbs.	76"	101"	91"	21' 3"	25' 8"	31 Gals.	30 Gals.	30 Gals.
S-235 SL	5,000 lbs.	507 lbs.	3,193 lbs.	1,300 lbs.	76"	101"	91"	23' 10"	23' 10"	31 Gals.	30 Gals.	30 Gals.
S-235 SDSL	5,000 lbs.	426 lbs.	3,214 lbs.	1,360 lbs.	76"	101"	91"	23' 10"	23' 10"	31 Gals.	30 Gals.	30 Gals.

Thoroughbred Ultra Lite Travel Trailers

STANDARD FEATURES

- EPDM Rubber Roof • Aluminum Framed Laminated Construction • Laminated, Smooth Fiberglass Exterior • Foam Insulated Walls/Floor/Roof • Laminated Under Belly
- Four-Screw Down Style Stabilizer Jacks • Dbl. 20 lb. LP Gas Bottles with Regulator • ALKO Torsion Axle (10" Brakes) • Slide Away Step
- Sewer Hose Storage Compartment • TV Cable Ready • Knife Rack (with Oven) • Fabric Window Shades • 12 Volt Power Roof Vent • Medicine cabinet w/Mirror • Power Range Hood w/Fan & Light • 6 Cu. Ft./2-Way Refer (5 Cu. Ft. on T-21 FBSL) • Electric Slide

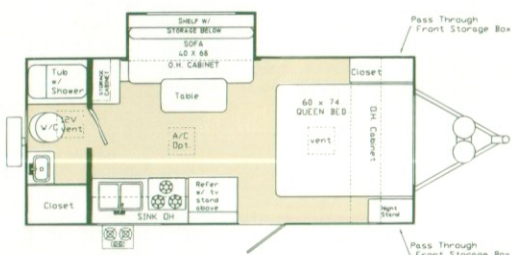
- Spice Rack • Six Gallon Quick Recovery Water Heater • Demand Water Pump • 20,000 BTU Ducted Furnace • Pre-Wired for optional Microwave • Pre-Wired for Optional Air Conditioner • Silverware Tray • 110 Volt Outside Receptacle with GFI • 28 Ft. Power Cord - 30 AMP • Converter with Charger • GFI Protected Receptacles • Smoke Detector • LP Gas Detector • Keyed Dead Bolt Entry Lock
- Radius Safety Glass Windows • Breakaway Switch • Three-Burner Range • Slide Room Overhead Cabinet

ACCESSORY PACKAGE

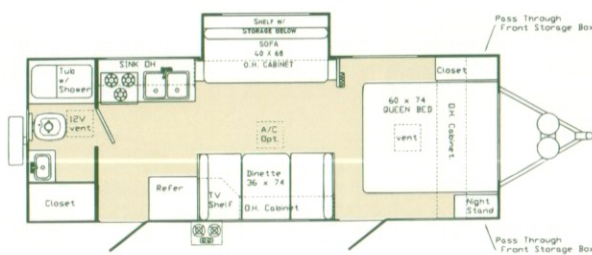
- TV Antenna • Outside Stove • Outside Shower • Systems Monitor Panel • Spare Tire & Cover • Range Cover • Sink Cover
- LP Bottle Cover • Battery Box • Safety Glass • Sand Pads • Awning • Oven
- CD Player • DSI Water Heater
- Microwave-Included in Pkg. On 27's

POPULAR OPTIONS

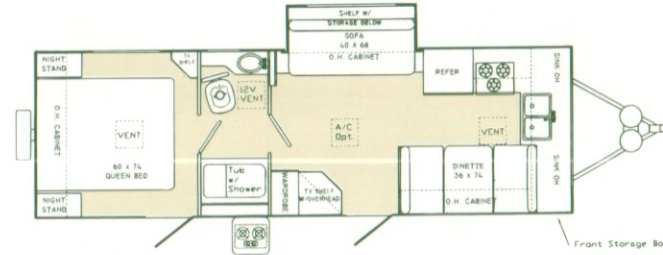
- Air Conditioner (13.5) • Microwave
- Three-Burner Stove w/Oven • AM/FM Stereo with CD Player • Roof Rack and Ladder • Slide Topper Awning • DSI Water Heater • Outside Service Lights • Storage Tub • Optional 2nd Door



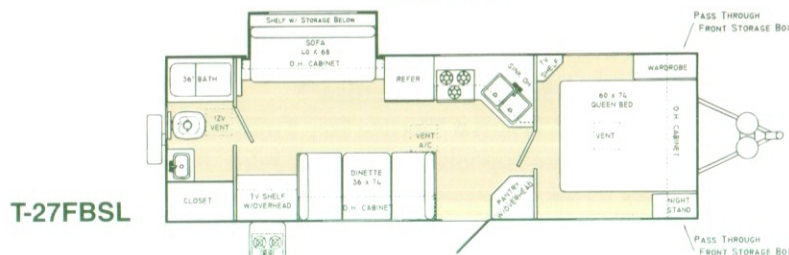
T-21FBSL



T-25FBSL



T-27FKSL



T-27FBSL

Thoroughbred Ultra Lite Travel Trailers Specifications

Model	GVWR	Hitch Dry Weight	Dry Axle Weight	Carrying Capacity	Interior Height	Exterior Height	Exterior Width	Overall Length	Fresh Water Capacity	Gray Water Capacity	Black Water Capacity
T-21 FBSL	4,400 lbs.	411 lbs.	2,692 lbs.	1,297 lbs.	76"	101"	91"	21' 3"	31 Gals.	30 Gals.	30 Gals.
T-25 FBSL	5,000 lbs.	416 lbs.	3,049 lbs.	1,535 lbs.	76"	101"	91"	25' 3"	31 Gals.	30 Gals.	30 Gals.
T-27 FKSL	6,640 lbs.	711 lbs.	3,489 lbs.	2,440 lbs.	76"	101"	91"	27' 5"	31 Gals.	30 Gals.	30 Gals.
T-27 FBSL	6,640 lbs.	408 lbs.	3,663 lbs.	2,569 lbs.	76"	101"	91"	27' 5"	31 Gals.	30 Gals.	30 Gals.

There's No Better Way to Enjoy The Great Outdoors!



Since 1968 Palomino has been dedicated to building Recreational Vehicles designed to meet the needs of camping families around the world.

Integrity, innovation, quality, convenience and affordability are words that best describe Palomino's commitment to producing R.V.'s. Our long standing goal is for complete customer satisfaction whether you select a folding tent trailer, soft-side pop-up truck camper, an Ultra-Lite travel trailer, Palomino's Stampede model (an Ultra-Lite travel trailer with expandable bed ends), or our Fifth Wheel.

Since 1968... PALOMINO... A name you can trust and depend on to meet your expectations and to ensure your camping pleasure.

For more information on our folding tent campers, truck campers and travel trailers, visit a dealer near you. Give us a call or visit our web site at www.palominorv.com for complete floor plans and specifications.

General Warranty Information**

Rubber Roof...12 years • Fiberglass Skin...2 years • Chassis Frame...5 years • Structure...3 years
• Al-Ko Torsion Suspension...5 years • Tent Fabric...5 years • General Camper Coverage...1 year

**Refer to actual printed warranty statement for details.

All Palominos built to comply with RVIA codes, and American National Standards Institute regulations. Specifications subject to change without notice. Specifications in this brochure are based on information at time of publication. Vanguard Industries of Michigan, Inc., reserves the right to make changes in materials, components and specifications and to discontinue models at any time without notice or obligation. Depending on materials from time to time, weights may vary plus or minus five percent.

Palomino Travel Trailers are designed to meet the varied needs of the customer. It is the responsibility of the owner to select the proper load combination for their individual needs without exceeding the listed axle weight capacities.



VANGUARD INDUSTRIES OF MICHIGAN, INC., COLON, MICHIGAN 49040, PHONE (616) 432-3271 www.palominorv.com

8000 Series Travel Trailers

STANDARD FEATURES

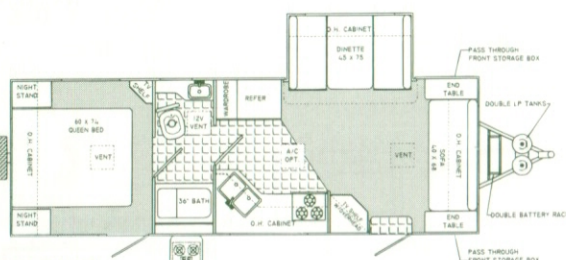
- Laminated Construction • EPDM Rubber Roof
- Aluminum Framed • Smooth Fiberglass Exterior
- Foam Insulated Walls/Floor/Roof • Four Stabilizer Jacks • ALKO Axle • Storage Bumper • Triple Step
- Breakaway Switch • Converter with Charger • GFI Protected Receptacles • 12 Volt Power Roof Vent • Smoke/Gas Detector • Power Range Hood w/Fan & Light • TV Cable Ready • Knife Rack • Silverware Tray
- Porcelain Toilet • Medicine Cabinet w/Mirror • 30,000 BTU Ducted Furnace • Dometic 6 Cu. Ft./2-Way Refrigerator • Slide Room Overhead Cabinet • Fabric Window Shades

ACCESSORY PACKAGE

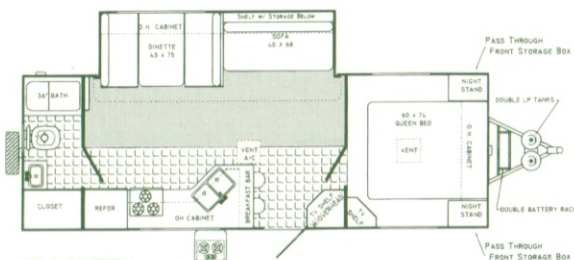
- Ducted A/C • Microwave • Stereo CD Player • Three-Burner Stove with Oven • TV Antenna • Tub Surround • DSI Water Heater • Awning • Bed Spread and Fabric Upgrade • Partial Carpet w/Pad • Safety Glass • Range Cover • Double 30 Lb. LP Bottles • Bottle Cover

POPULAR OPTIONS

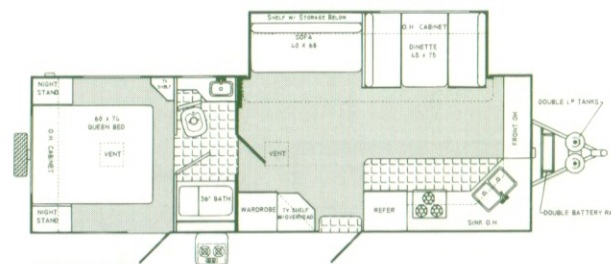
- Slide Topper Awning • Roof Rack and Ladder
- Gas/Electric DSI Water Heater (Upgrade)
- Free Standing Table and Four Chairs • Outside Service Lights • Electric Dolly Jack • Water Purification System • Mattress Upgrade
- Folding Assist Handle • Stereo Upgrade
- Toilet Spray Attachment • Pillow Shams • 13" Color TV-12 Volt • VCR-12 Volt • Scare Lights • Outside Stove • Outside Shower • Spare Tire & Cover • 8 Cu. Ft. Refer • 15K Air Conditioner • Heated Holding Tanks



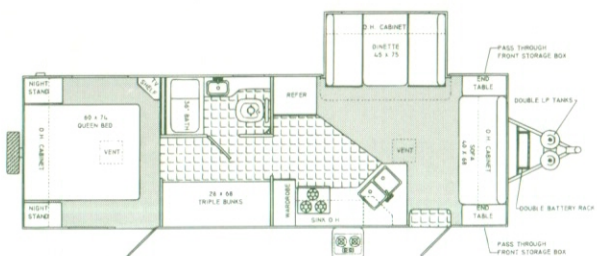
T-827FL



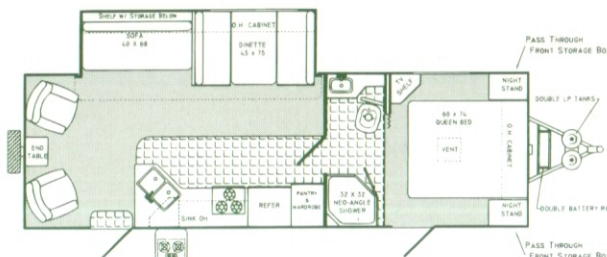
T-827FB



T-829FK



T-829BH



T-830RL

8000 Series Travel Trailers Specifications

Model	GVWR	Hitch Dry Weight	Gross Dry Weight	Carrying Capacity	Tire Size	Interior Height	Exterior Height	Exterior Width	Overall Length	Fresh Water Capacity	Gray Water Capacity	Black Water Capacity
T-827 FL	7,000 lbs.	795 lbs.	4,938 lbs.	1,500 lbs.	ST 205/75D14C	6'6"	10' 10"	96"	27' 9"	31 Gals.	30 Gals.	30 Gals.
T-827 FB	8,800 lbs.	570 lbs.	5,542 lbs.	2,674 lbs.	ST235/75D15C	6'6"	10' 10"	96"	27' 9"	31 Gals.	30 Gals.	30 Gals.
T-829 FK	8,800 lbs.	960 lbs.	5,904 lbs.	2,420 lbs.	ST235/75D15C	6'6"	10' 10"	96"	29' 2"	31 Gals.	60 Gals.	30 Gals.
T-829 BH	8,800 lbs.	1,100 lbs.	5,664 lbs.	2,509 lbs.	ST235/75D15C	6'6"	10' 10"	96"	29' 2"	31 Gals.	60 Gals.	30 Gals.
T-830 RL	8,800 lbs.	760 lbs.	5,818 lbs.	2,365 lbs.	ST235/75D15C	6'6"	10' 10"	96"	29' 8"	31 Gals.	60 Gals.	30 Gals.

8000 Series Fifth Wheels

STANDARD FEATURES

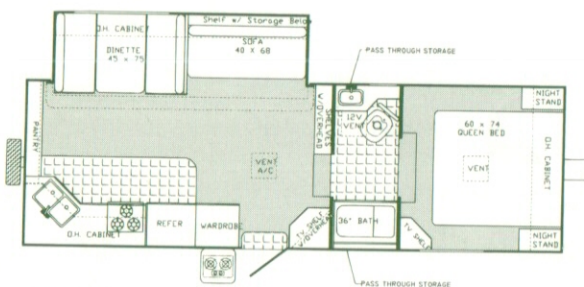
- Laminated Construction • EPDM Rubber Roof
- Aluminum Framed • Smooth Fiberglass Exterior
- Foam Insulated Walls/Floor/Roof • Four Stabilizer Jacks • ALKO Axle • Storage Bumper • Triple Step
- Breakaway Switch • Converter with Charger • GFI Protected Receptacles • 12 Volt Power Roof Vent
- Smoke/Gas Detector • Power Range Hood w/Fan & Light • TV Cable Ready • Knife Rack • Silverware Tray
- Porcelain Toilet • Medicine Cabinet w/Mirror • 30,000 BTU Ducted Furnace • Dometic 6 Cu. Ft./2-Way Refrigerator • Slide Room Overhead Cabinet • Fabric Window Shades

ACCESSORY PACKAGE

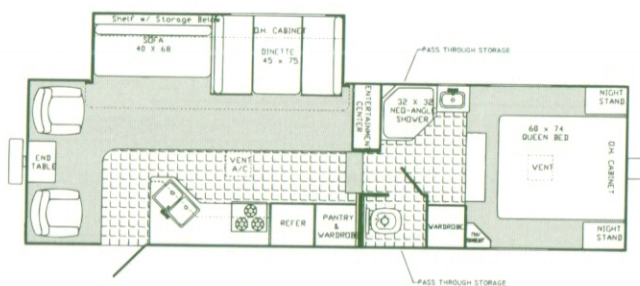
- Ducted A/C • Microwave • Stereo CD Player • Three-Burner Stove with Oven • TV Antenna • Tub Surround
- DSI Water Heater • Awning • Bed Spread and Fabric Upgrade • Partial Carpet w/Pad • Safety Glass • Range Cover • Double 30 Lb. LP Bottles

POPULAR OPTIONS

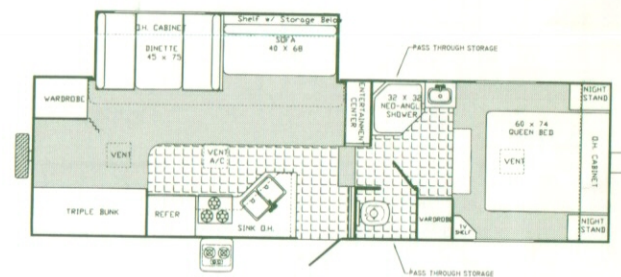
- Slide Topper Awning • Roof Rack and Ladder • Gas/Electric DSI Water Heater (Upgrade) • Free Standing Table and Four Chairs • Raised Panel/Refrigerator Front
- Outside Service Lights • Electric Fifth Wheel Jacks • Water Purification System • Hide-A-Bed • Mattress Upgrade • Folding Assist Handle • Stereo Upgrade • Toilet Spray Attachment • Pillow Shams • 13" Color TV-12 Volt • VCR • Outside Stove • Outside Shower
- Spare Tire & Cover • 8 Cu. Ft. Refer • 15K Air Conditioner • Heated Holding Tanks



F-826RK



F-829RL



F-829BH

8000 Series Fifth Wheels Specifications

Model	GVWR	Hitch Dry Weight	Gross Dry Weight	Carrying Capacity	Tire Size	Interior Height	Exterior Height	Exterior Width	Overall Length	Fresh Water Capacity	Gray Water Capacity	Black Water Capacity
F-826 RK	10,130 lbs.	1,330 lbs.	6,478 lbs.	3,074 lbs.	235/75D15C	6'6"	11' 10"	96"	26'	31 Gals.	60 Gals.	30 Gals.
F-829 RL	10,210 lbs.	1,410 lbs.	6,871 lbs.	2,768 lbs.	235/75D15C	6'6"	11' 10"	96"	29' 2"	31 Gals.	60 Gals.	30 Gals.
F-829 BH	10,110 lbs.	1,310 lbs.	6,846 lbs.	2,693 lbs.	235/75D15C	6'6"	11' 10"	96"	29' 2"	31 Gals.	60 Gals.	30 Gals.