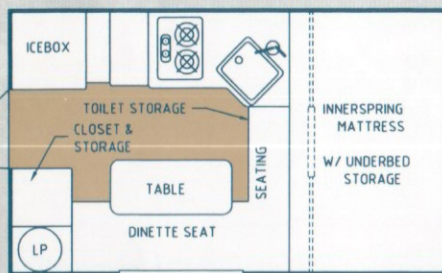


Palomino

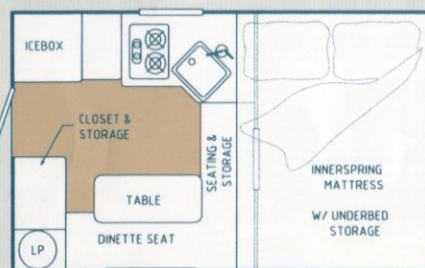


2003 TRUCK CAMPERS

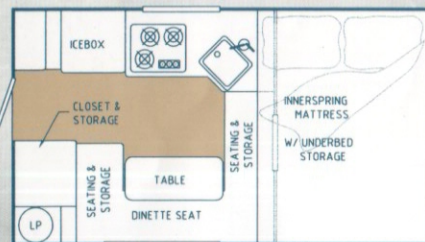
2003 BRONCO SOFT SIDE TRUCK CAMPERS



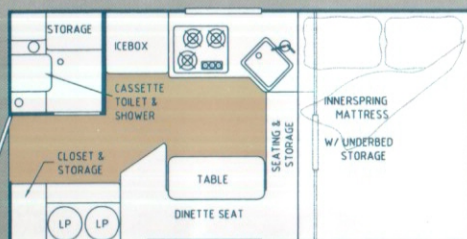
Bronco 600



Bronco 800



Bronco 1200/1250 SB



Bronco 1500



| SPECIFICATIONS | B-600 | B-800 | B-1200 | B-1250 SB | B-1500 |
|---------------------------|-----------|-----------|-----------|-----------|-----------|
| Gross Dry Weight (lbs.) | 1004 | 1126 | 1265 | 1325 | 1577 |
| Exterior Length Overall | 11' 0" | 11' 4" | 12' 10" | 12' 10" | 14' 4" |
| Exterior Width | 6' 5" | 7' 2" | 7' 2" | 7' 2" | 7' 2" |
| Box Length | 7' 4" | 6' 9" | 8' 0" | 8' 0" | 9' 6" |
| Box Width | 36" | 48" | 48" | 48" | 48" |
| Dakota Optional Box Width | N/A | 44" | 44" | 44" | N/A |
| Total Height Closed | 4' 8" | 5' 4" | 5' 4" | 5' 4" | 5' 4" |
| Interior Height | 6' 4" | 6' 4" | 6' 4" | 6' 4" | 6' 4" |
| Cabover Bed Size | 46" x 72" | 60" x 80" | 60" x 80" | 60" x 80" | 60" x 80" |
| Dinette Bed Size | 20" x 69" | 21" x 62" | 36" x 72" | 36" x 72" | 36" x 72" |
| Full Size Entrance Door | STD | STD | STD | STD | STD |
| Door Height | 5' 7" | 5' 7" | 5' 7" | 5' 7" | 5' 7" |
| Fresh Water Tank (Gal.) | 5 | 16 | 16 | 16 | 16 |
| Converter w/Charger (AMP) | 12 | 12 | 12 | 12 | 25 |

FEATURES AND OPTIONS

EXTERIOR

| | B-600 | B-800 | B-1200 | B-1250SB | B-1500 |
|---------------------------------|-------|-------|--------|----------|--------|
| Laminated Roof/Sidewalls | S | S | S | S | S |
| Foam Insulation | S | S | S | S | S |
| 20 Lbs. Bottle and Regulator | S | S | S | S | (2) |
| City Water Hookup | S | S | S | S | S |
| Outside Fresh Water Tank Fill | - | S | S | S | S |
| One Piece Treated Floor | S | S | S | S | S |
| Steel Floor Supports | S | S | S | S | S |
| Front Truck Bed Bumpers | S | S | S | S | S |
| Three 1,000 Lbs. Jacks | S | S | S | S | S |
| Four Mechanical Corner Jacks | 0 | 0 | 0 | 0 | 0 |
| Front Sliding Cab Windows | S | S | S | S | S |
| White Radius Windows | S | S | S | S | S |
| Outside Shower (Hot Water Reg.) | - | - | 0 | 0 | 0 |
| Vinyl Coated Canvas | S | S | S | S | S |
| Radius Roof | S | S | S | S | S |
| Crank Lift System | S | S | S | S | S |
| Happi Jac Tie Downs | 0 | 0 | 0 | 0 | 0 |

INTERIOR

| | B-600 | B-800 | B-1200 | B-1250SB | B-1500 |
|------------------------------------|-------|-------|--------|----------|--------|
| Innerspring Mattress | S | S | S | S | S |
| Bed Spread | 0 | 0 | 0 | 0 | 0 |
| Deluxe 4" Dinette Cushions | S | S | S | S | S |
| Privacy Drape/Cabover Bed | S | S | S | S | S |
| Pleated Fabric Window Shades | S | S | S | S | S |
| Wheel Well Access Doors | S | S | S | S | S |
| Vinyl Floor Covering | S | S | S | S | S |
| Porta Pottie Storage | S | S | S | S | - |
| Tinted Upper Windows | S | S | S | S | S |
| Fantastic Fan | 0 | 0 | 0 | 0 | 0 |
| Roof Air Ready for Air Conditioner | S | S | S | S | S |
| 13,500 BTU Air Conditioner | 0 | 0 | 0 | 0 | 0 |
| Dinette Bed | - | 0 | S | S | S |
| Under Bed Storage | S | S | S | S | S |

APPLIANCES/GALLEY/BATH

| | B-600 | B-800 | B-1200 | B-1250SB | B-1500 |
|-----------------------------------|-------|-------|--------|----------|--------|
| 35 Lbs. Ice Box | S | S | S | S | S |
| Dometic 2 Cu. 3-Way Refrigerator | 0 | 0 | 0 | 0 | 0 |
| Dometic 3 Cu. 3-Way Refrigerator | - | 0 | 0 | 0 | 0 |
| 16,000 BTU Furnace | 0 | 0 | 0 | 0 | 0 |
| Three Burner Cook Top | (2) | (2) | S | S | S |
| 6-Gal. Water Heater w/Demand Pump | - | 0 | 0 | 0 | S |
| Shower | - | - | - | - | S |
| Toilet | - | - | - | - | S |
| Overhead Storage Cabinet | S | S | S | S | S |
| 14 x 14 Roof Vent | S | S | S | S | S |

ELECTRIC

| | B-600 | B-800 | B-1200 | B-1250SB | B-1500 |
|-------------------------------------|-------|-------|--------|----------|--------|
| 12 Volt Interior Lights | S | S | S | S | S |
| Power Converter with Charger (AMPS) | 12 | 12 | 12 | 12 | 25 |
| 28 Ft. Power Cord - 30 AMP | S | S | S | S | S |
| 110 Volt Outside Receptacle/GFI | S | S | S | S | S |

SAFETY

| | B-600 | B-800 | B-1200 | B-1250SB | B-1500 |
|---------------------------------|-------|-------|--------|----------|--------|
| 12 Volt Patio Light | S | S | S | S | S |
| Carbon Monoxide/LP Gas Detector | S | S | S | S | S |
| Zippered Escape in Cabover | S | S | S | S | S |
| Keyed Entry Lock | S | S | S | S | S |
| Interior Safety Lock Feature | S | S | S | S | S |
| Entry Assist Handle | S | S | S | S | S |
| Fire Extinguisher | S | S | S | S | S |
| Full Size Entrance Door | S | S | S | S | S |

2003 MAVERICK HARDSIDE TRUCK CAMPERS



SPECIFICATIONS

| | M-8801 | M-1000 |
|---------------------------|-----------|-----------|
| Gross Dry Weight (lbs.) | 2320 | 2453 |
| Exterior Length Overall | 16' 11" | 17' 4" |
| Box Length | 9' | 10' |
| Exterior Width | 7' 10" | 7' 10" |
| Box Width | 48" | 48" |
| Exterior Height | 7' 9" | 7' 9" |
| Interior Height | 6' 11" | 6' 11" |
| Cabover Bed Size | 60" x 80" | 60" x 80" |
| Dinette Bed Size | 40" x 73" | 40" x 73" |
| Fresh Water Tank (Gal.) | 25 | 25 |
| Black Water Tank (Gal.) | 7 | 7 |
| Gray Water Tank (Gal.) | 8 | 7 |
| Converter w/Charger (AMP) | 30 | 30 |



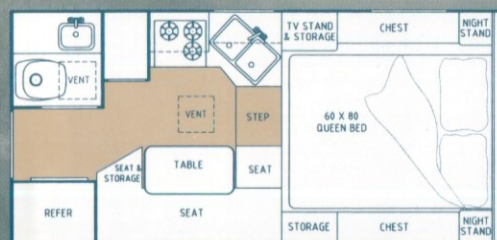
FEATURES AND OPTIONS

EXTERIOR

| | M-8801 | M-1000 |
|---|--------|--------|
| Fully Decked Laminated/Insulated Roof | S | S |
| EPDM Rubber Roof | S | S |
| Laminated Smooth Fiberglass Exterior | S | S |
| Foam Insulated Walls/Floor | S | S |
| Laminated Knee Walls | S | S |
| Laminated Under Belly | S | S |
| Steel Floor Supports | S | S |
| Front Truck Bed Bumpers | S | S |
| 2,000 Lbs. Manual Ball Screw Jacks | S | S |
| Front Sliding Cab Window | S | S |
| White Radius Safety Glass Windows | S | S |
| Short Bed Package | 0 | N/A |
| Double 20 Lbs. LP Bottles and Regulator | S | S |
| City Water Hookup | S | S |
| Entry Step (Scissor) | 0 | 0 |
| Happi Jac Tie Downs | 0 | 0 |
| Sewer Hose Adapter | S | S |
| Sewer Hose Storage Compartment | S | S |
| Outside Fresh Water Tank Fill | S | S |
| Electric Jacks | 0 | 0 |
| Awnings (Side & Rear) | 0 | 0 |
| Dually Brackets | 0 | 0 |

INTERIOR

| | M-8801 | M-1000 |
|--|--------|--------|
| 13,500 BTU Air Conditioner | 0 | 0 |
| Deluxe Queen Size Innerspring Mattress | S | S |
| Pillow Top Mattress Upgrade | 0 | 0 |
| Privacy Drape/Cabover | S | S |
| Bed Spread | S | S |
| Pillow Shams | 0 | 0 |
| Pleated Fabric Window Shades | S | S |
| Framed Cabinet Doors & Drawer Fronts | S | S |
| Positive Catch Hardware | S | S |
| Wheel Well Access Doors | S | S |
| Vented Battery Box | S | S |
| TV Cable Ready | S | S |
| Overhead Cabinet Bunk | 0 | 0 |
| Folding Sofa Bed | N/A | 0 |
| Extended Cabover with Queen Bed | S | S |
| AM/FM CD Player | 0 | 0 |
| Amplified TV Antenna | S | S |
| Vinyl Floor Covering | S | S |
| Fantastic Fan | 0 | 0 |



Maverick 8801

FEATURES AND OPTIONS

APPLIANCES/GALLEY

| | M-8801 | M-1000 |
|--------------------------------------|--------|--------|
| Dometic 5 Cu.Ft Refrigerator | S | S |
| 16,000 BTU Furnace w/Auto Ignition | S | S |
| Three Burner Range | S | S |
| Three Burner Range with Oven | 0 | 0 |
| Microwave Oven | 0 | 0 |
| 6-Gal. Water Heater w/Outside Shower | S | S |
| Demand Water Pump | S | S |
| Power Range Hood w/Light and Fan | S | S |
| Range Cover | S | S |

BATH AND VANITY

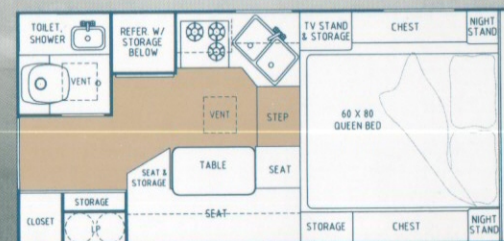
| | M-8801 | M-1000 |
|------------------------------|--------|--------|
| Toilet | S | S |
| Shower | S | S |
| 12 Volt Power Vent | S | S |
| Medicine Cabinet with Mirror | S | S |
| Water Heater By - Pass Kit | S | S |

ELECTRIC

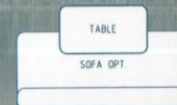
| | M-8801 | M-1000 |
|--|--------|--------|
| Pre-wired for Optional Microwave | S | S |
| Pre-wired for Optional Air Conditioner | S | S |
| Pre-wired for Optional Electric Jacks | S | S |
| Stereo Pre-wired | S | S |
| 12 Volt Interior Lights | S | S |
| 110 Volt Outside Receptacle | S | S |
| 28 Ft. Power Cord - 30 AMP | S | S |
| System Monitor Panel | S | S |
| Converter with Charger (AMPS) | 30 | 30 |

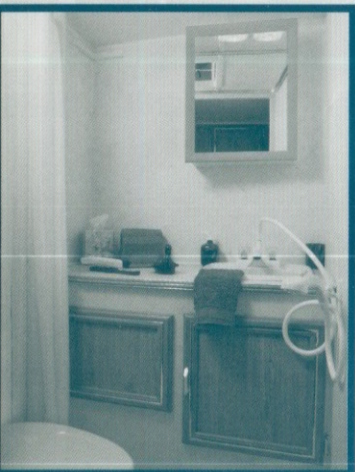
SAFETY

| | M-8801 | M-1000 |
|--------------------------------------|--------|--------|
| GFI Protected Receptacles | S | S |
| Smoke Detector | S | S |
| Carbon Monoxide and LP Gas Detectors | S | S |
| Egress Vent/Cabover | S | S |
| Entry Assist Handle | S | S |
| Fire Extinguisher | S | S |
| Backup and Tail Lights | S | S |
| Lower Door Window | 0 | 0 |
| Ladder | S | S |

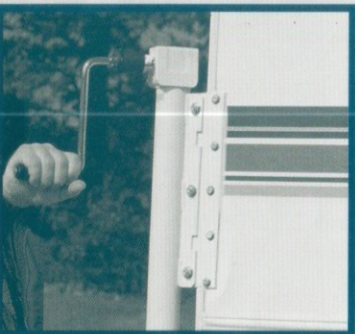


Maverick 1000

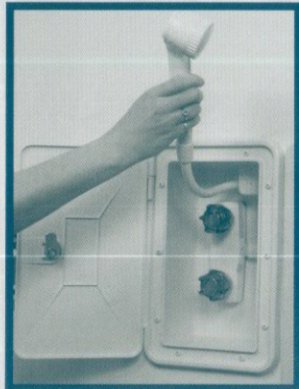




Maverick bathroom models provide comfort and privacy. Standard features include on demand hot water, vanity with sink, cabinet with mirror, toilet and shower



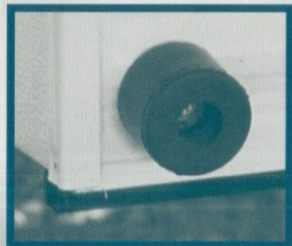
Four manual Ball Screw Jacks, each with a 2,000lb. rating are a standard feature on hard-side models. Electric Ball Screw Jacks may be optioned.



Outside Shower is optional on some models.



Happi Jac Camper Anchor and Turnbuckle.



Front Rubber Bumpers protect the front of the truck bed.



The B-1200 model (shown above) provides many great standard and optional features to make your camping a pleasure.

All illustrations and specifications contained in this literature are based on the latest product information at the time of publication. Vanguard LLC reserves the right to make changes in prices, colors, materials, equipment and specifications and to discontinue models at anytime without notice or obligation and assumes no responsibility for any error in this literature.

Vanguard LLC can not know the GVWR or features of your truck nor the purpose you have in mind for the use of your Truck Camper. Therefore, Vanguard LLC makes no warranties or representation, expressed or implied, as to the performance or reliability of your truck with a Palomino Truck Camper.



VANGUARD LLC, COLON, MICHIGAN 49040, PHONE (269) 432-3271 www.palominorv.com