

Green

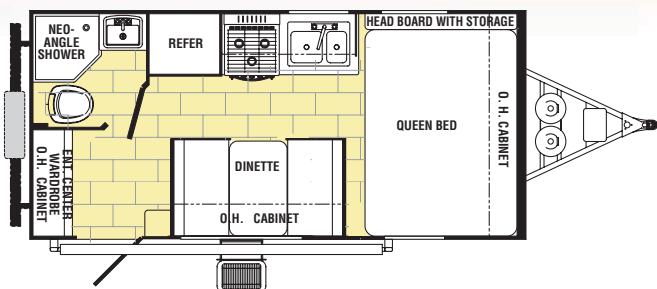


Burgundy

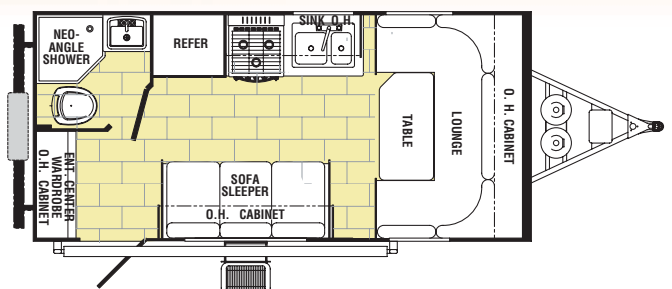


## Floor Plans

G-178 QB



G-178 FD



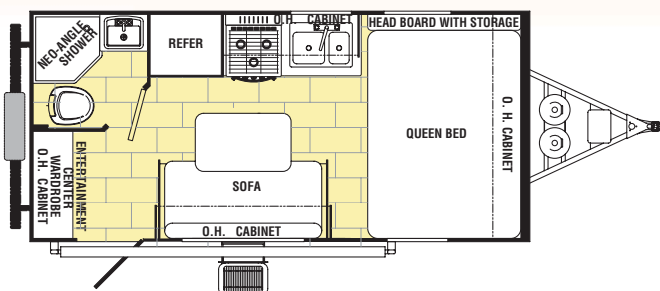




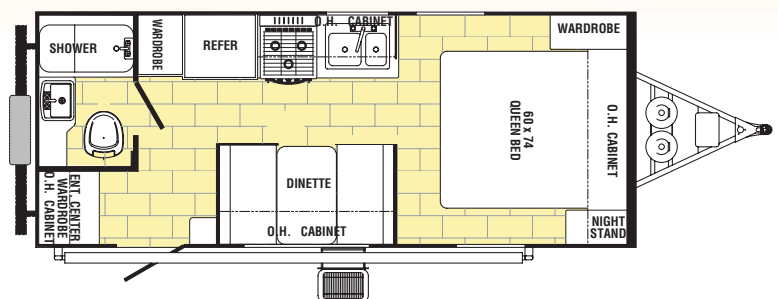
## Specifications

	G-178 FD	G-178 QB	G-178 QBS	G-210
Hitch Dry Weight	227 lbs.	210 lbs.	239 lbs.	281 lbs.
Dry Axle Weight	2681 lbs.	2765 lbs.	2693 lbs.	3226 lbs.
Total Dry Weight	2908 lbs.	2975 lbs.	2932 lbs.	3507 lbs.
Carrying Capacity	3972 lbs.	3888 lbs.	3984 lbs.	3752 lbs.
GVWR	7227 lbs.	7210 lbs.	7218 lbs.	7156 lbs.
Interior Height	76"	76"	76"	76"
Exterior Height	9'-6"	9'-6"	9'-6"	9'-6"
Exterior Width	91"	91"	91"	91"
Travel Length	21'-6"	21'-6"	21'-6"	24'-4"
Fresh Water Capacity	38 Gals.	38 Gals.	38 Gals.	38 Gals.
Gray Water Capacity	31 Gals.	31 Gals.	31 Gals.	31 Gals.
Black Water Capacity	28 Gals.	28 Gals.	28 Gals.	28 Gals.

G-178 QBS



G-210



## Standards

- 14" Tires
- 20,000 BTU Suburban Furnace
- A & E Awning
- Aluminum Framing
- B.A.L. Jacks with Sand Pads
- 45 AMP Converter with Battery Charger
- Crowned Back Dinette Seats (Not Available On Model G-178 FD)
- 6 Cu.Ft. Dometic Refrigerator
- Ducted Roof Air Ready
- EPDM Rubber Roof – 12 Year Warranty
- Filon Fiberglass Exterior Surface
- Outside Marine Grade Speakers
- Outside Service Lights (3)
- Outside Shower
- Oversized Bathroom Skylight
- Six Gallon Gas/Elec. DSI Water Heater
- Spare Tire, Bracket & Molded Cover
- Tinted Safety Glass Windows
- Torsion Axle, Rubber Ryde Suspension (Independent) with Easy Lube
- Tub Surround
- TV Antenna/Cable/Sat./Phone
- Two - 20 lb. LP Gas Bottles with Molded Cover
- Vacuum Bonded Laminated Construction
- Window Shade Fabric
- Wired for Telephone

## Options

- Air Conditioner (13.5)
- Aluminum Wheels
- AM/FM CD Player
- Create-A-Breeze Fan
- Mattress Upgrade (Not Available for Model G-178 FD)
- M & T Raised Panel Cabinet Doors
- Microwave
- Outside Gas Grill with Accessory Table
- Raised Refer Door Upgrade (6 Panel)
- Sliding A.B.S. Storage Tray
- Stainless Steel Package (Refer Panel Incl.)
- Three-Burner Range with Oven
- Water Purifier



Free Emergency Roadside Assistance  
Service Administered by Coach-Net®.  
Ask your dealer for more information.

DEALER



**Palomino RV**  
1047 East M-86 • Colon, MI 49040  
Phone: (269) 432-3271 • Fax: (269) 432-2516  
[www.palominorv.com](http://www.palominorv.com)

All information and specifications contained in this literature are based on the latest product information at time of publication. Palomino RV reserves the right to make changes in price, colors, materials, equipment and specifications and to discontinue models at anytime without notice or obligation and assumes no responsibility for any error in this literature.

Palomino Travel Trailers and Fifth Wheels are designed to meet the varied needs of the customer. It is the responsibility of the owner to select the proper load combination for their individual needs without exceeding the listed axle weight capacities.