

# Canyon Cat

by Palomino



## Standards and Options

### Standard Features

- › Rear Stab. Jacks
- › 45 Gal. Fresh Water Tank
- › 30 Gal. Grey Water Tank
- › 30 Gal. Black Water Tank
- › 2-Burner Cook Top
- › Tinted Windows
- › Rubber Roof
- › 3.0 Cu. Ft. Refer
- › Overhead Cabinets
- › Foot Flush Toilet
- › Beauflor® Linoleum
- › Real Wood Drawers
- › Bath Skylight
- › 6 Gal. Gas DSI Water Heater
- › Grab Handle
- › 20 Lb. LP Bottle with Cover
- › Range Hood

### Most Popular Options

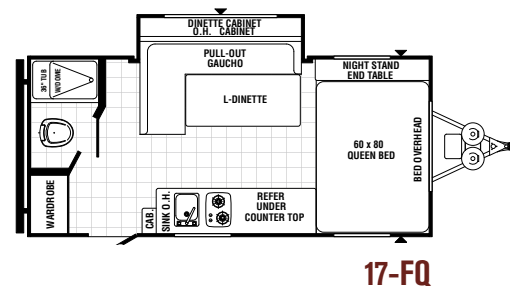
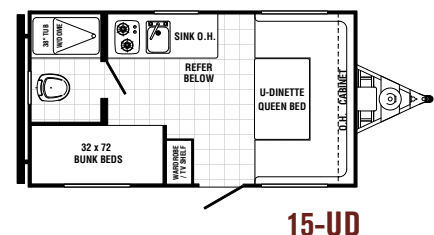
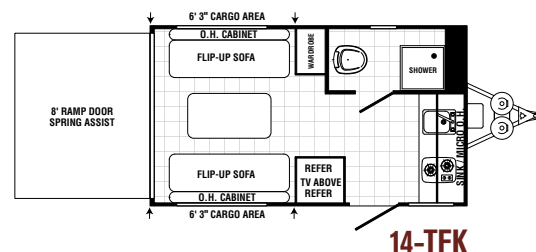
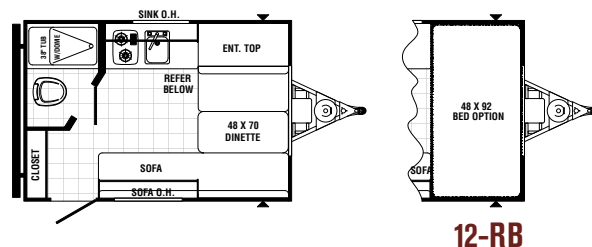
- › 13,500 BTU Non-Duct A/C
- › Mini Blinds
- › Awning
- › Front Window with Rockguard
- › Spare Tire and Carrier
- › AM/FM/CD Stereo
- › Bedspread (12RB, 17FQ)
- › TV Antenna with Cable Hook-Up
- › Carbon Monoxide Detector
- › Z240
- › State Seal
- › Front Bed IPO Booth Dinette (12RB Only)

### Express Package

- › Microwave
- › Front Stab. Jacks
- › Tub/Shower Surround

### Specifications

Canyon Cat	12-RB	14-TFK	15-UD	17FQ
Box Length	11' 10"	14' 1"	14' 11-1/4"	17' 11"
Overall Length	15' 6"	18' 2"	18' 8-7/8"	21' 11"
Exterior Width	96"	96"	96"	96"
GVWR (Lbs.)	3,690	4,648	3,837	7,320
CCC (Lbs.)	1,313	1,424	825	3,424
Hitch (Lbs.)	190	248	337	320
Axle (Lbs.)	2,170	2,959	2,658	3,526
Total Dry (Lbs.)	2,360	3,207	2,995	3,846



**Palomino RV**  
 1047 East M-86  
 Colon, MI 49040  
 Phone: (269) 432-3271  
 Fax: (269) 432-2516  
 www.palominoRV.com

Your Canyon Cat Dealer



**Learn More**  
 Scan this barcode using  
 a QR Reader on your  
 smart phone to learn  
 more about Forest River.



A Berkshire Hathaway company.



All illustrations and specifications contained in this literature are based on the latest product information at time of publication. Palomino RV reserves the right to make changes in prices, colors, materials, equipment and specifications and to discontinue models at anytime without notice or obligation and assumes no responsibility for any error in this literature.

Palomino Travel Trailers and Fifth Wheels are designed to meet the varied needs of the customer. It is the responsibility of the owner to select the proper load combination for their individual needs without exceeding the listed axle weight capacities.