

PALOMINI

BY PALOMINO



PURE *M*ICHIGAN®



179 RDS SHOWN WITH ELITE PACKAGE



179 RDS SHOWN WITH ELITE PACKAGE

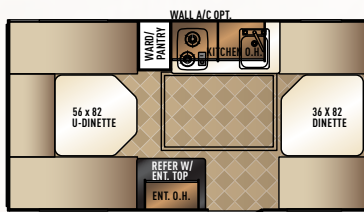


THE BEST OF BOTH WORLDS.

The Palominis are designed to meet the needs of the traditional camper, with the laminated light-weight fiberglass construction, in an easy-to-tow 7' wide trailer width. Not only do you have greater visibility while towing, the torsion axle gives you a smooth ride. (Torsion axle N/A on 131 & 132)

PALOMINI FLOORPLANS

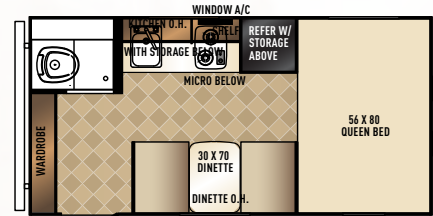
STANDARD MODELS



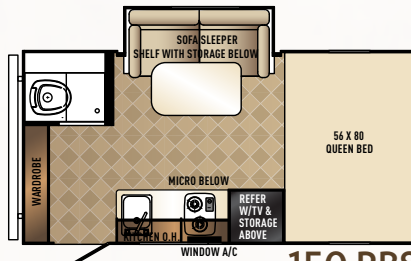
131 RL



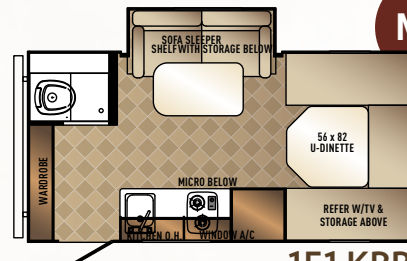
132 FD



142 CK



150 RBS



151 KBB

NEW



177 BH

NEW

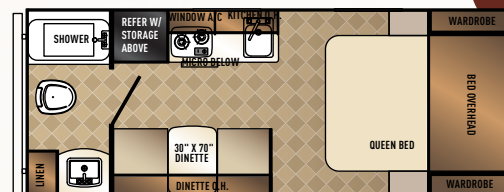


179 BHS

FLIP UP EXTERIOR STORAGE



179 RDS



180 FB

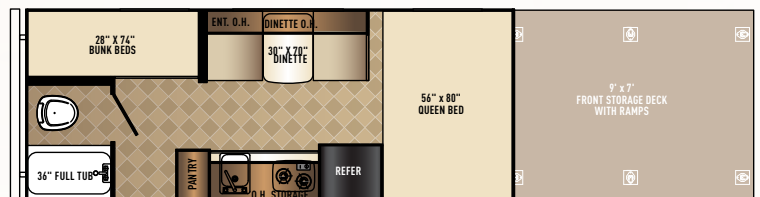
NEW

NEW

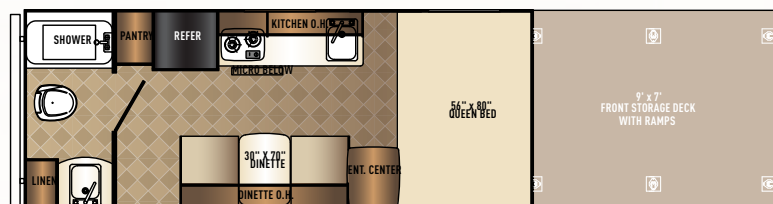
OFF-ROAD MODELS



132 ORV FD



177 ORV BH



180 ORV FB

STANDARD FEATURES

- Dexter Tor Flex torsion axle (N/A 131/132)
- Diamond plate front
- 4 stabilizer jacks (2 on 131 and 132)
- 1-20 lb. LP tank
- 5,000 BTU AC
- AM/FM bluetooth stereo
- Ball bearing drawer guides
- 2 burner cook top
- Microwave
- Power vent
- CO2 detector
- True Walnut hand glazed cabinets
- LED interior lighting
- Laminated walkable roof
- Pillow top memory foam mattress (NA on 131)
- ToyLok®

OPTIONAL FEATURES

- Serta Mattress
 - Aluminum wheels
 - Frameless windows
 - Power Awning w/LED lights (N/A on 131/132)
 - RVQ grill w/bumper mount
 - Solid surface counter tops
 - Body Armor Edition
- (Available on 132 ORV FD only)

OFF ROAD PKG

Includes 15" wheels, 28" mudder tires, lift kid, motion sensor security light, flared fenders, assist rail (Pkg std. on Off-Road floorplans)

ELITE PKG

Includes Serta Mattress, Bonded windows, solid surface counter tops, aluminum wheels, power awning w/ LED lights

SUPERIOR FEATURES.

TOP TEN REASONS TO BUY

1. Light weight construction to promote better fuel efficiency
2. Vacuum bonded construction
3. Exterior fiberglass for easy cleaning and maintenance
4. Fully walkable roofs
5. Tinted safety glass windows
6. LED interior lights allow for more light and less power usage
7. Residential walnut cabinets and real wood accents
8. Fully loaded with amenities
9. Narrow footprint to increase visibility
10. Affordably priced

PALOMINI WEIGHTS & MEASURES

| | 131 RL | 132 FD | 142 CK | 150 RBS | 151 KBB | 179 BHS |
|-------------------------|-----------|-----------|-----------|-----------|-----------|-----------|
| Hitch Dry Weight | 213 LBS. | 237 LBS. | 168 LBS. | 182 LBS. | 182 LBS. | 385 LBS. |
| Dry Axle Weight | 1717 LBS. | 1673 LBS. | 2290 LBS. | 2459 LBS. | 2459 LBS. | 2434 LBS. |
| Total Dry Weight | 1930 LBS. | 1910 LBS. | 2458 LBS. | 2641 LBS. | 2641 LBS. | 2819 LBS. |
| GVWR | 3713 LBS. | 3737 LBS. | 3668 LBS. | 3682 LBS. | 3682 LBS. | 3885 LBS. |
| Interior Height | 6'4" | 6'4" | 6'4" | 6'4" | 6'4" | 6'4" |
| Exterior Height | 8' | 8' | 9'3" | 9'3" | 9'3" | 9'3" |
| Exterior Width | 7' | 7' | 7' | 7' | 7' | 7' |
| Travel Length | 16'10" | 16'10" | 18'2" | 18'2" | 18'2" | 21'8" |
| Fresh Water Capacity | 19 GALS. | 19 GALS. | 25 GALS. | 25 GALS. | 25 GALS. | 25 GALS. |
| Gray Water Capacity | N/A | N/A | 30 GALS. | 30 GALS. | 30 GALS. | 30 GALS. |
| Black Water Capacity | N/A | N/A | 30 GALS. | 30 GALS. | 30 GALS. | 30 GALS. |
| Cargo Carrying Capacity | 1766 LBS. | 1810 LBS. | 1193 LBS. | 1070 LBS. | 1024 LBS. | 1049 LBS. |

| | 179 RDS | 177 BH | 180 FB | 132 ORV FD | 177 ORV BH | 180 ORV FB |
|-------------------------|-----------|-----------|-----------|------------|------------|------------|
| Hitch Dry Weight | 362 LBS. | 421 LBS. | 443 LBS. | 444 LBS. | TBD | TBD |
| Dry Axle Weight | 2542 LBS. | 2402 LBS. | 2361 LBS. | 2102 LBS. | TBD | TBD |
| Total Dry Weight | 2904 LBS. | 2823 LBS. | 2804 LBS. | 2546 LBS. | TBD | TBD |
| GVWR | 3862 LBS. | 3921 LBS. | 3943 LBS. | 3944 LBS. | TBD | TBD |
| Interior Height | 6'4" | 6'4" | 6'4" | 6'4" | TBD | TBD |
| Exterior Height | 9'3" | 9'3" | 9'3" | 9'3" | TBD | TBD |
| Exterior Width | 7' | 7' | 7' | 7' | TBD | TBD |
| Travel Length | 22'8" | 22'7" | 22'9" | 24'5" | TBD | TBD |
| Fresh Water Capacity | 25 GALS. | 25 GALS. | 25 GALS. | 25 GALS. | TBD | TBD |
| Gray Water Capacity | 30 GALS. | 30 GALS. | 30 GALS. | N/A | TBD | TBD |
| Black Water Capacity | 30 GALS. | 30 GALS. | 30 GALS. | N/A | TBD | TBD |
| Cargo Carrying Capacity | 941 LBS. | 1081 LBS. | 1122 LBS. | 1398 LBS. | TBD | TBD |

YOUR **PALOMINI** DEALER



Learn More
Scan this barcode using a QR Reader on your smart phone to learn more about Forest River.



SINCE 1968
PALOMINO
Recreational Vehicles
a Division of Forest River

PALOMINO RV
1047 East M-86 | Colon, MI 49040
P: 269.432.3271 | F: 269.32.2516
www.palominoRV.com

All illustrations and specifications contained in this literature are based on the latest product information at time of publication. Forest River, Inc. reserves the right to make changes in prices, colors, materials, equipment and specifications at anytime without notice and assumes no responsibility for any error in this literature. All weights shown are approximate. All units are shipped F.O.B. point of manufacture. CONSULT YOUR LOCAL DEALER FOR WARRANTY INFORMATION. Litho U.S.A. 2014.12.09 FOR1209