



**Everything but ordinary.**

*Every Safari comes with the ability to roam free.*

There's a spirit in the air. One that whispers freedom — gently urging you to break out and go exploring on your own terms. At Safari, our coaches are bred with a passion for adventure. Whether it takes you to remote mountain hideaways, winding coastal roads or simply across the



Midwest to visit your kids. We've combined the very best in engineering and innovation to give you feature-packed coaches at some of the best values in the industry. But in the end, don't just take our word for it. Visit a Safari dealer near you, and get a real taste of the adventure that lies ahead.

---

*The 2004 Safari Lineage*

PANTHER

ZANZIBAR

SAHARA

CHEETAH

TREK

YOUR SAFARI MOTORCOACH DEALER:

Visit our web site at [www.safarimotorcoaches.com](http://www.safarimotorcoaches.com) for the dealer nearest you or call 1-800-634-0855.

BY MONACO COACH CORPORATION • 91320 Coburg Industrial Way • Coburg, OR 97408

© 2003 Monaco Coach Corporation (NYSE: MNC) Printed in USA

0803 NPN: BROSPAN



# PANTHER04

*Adventures as colorful as the people you meet.*





# PANTHER04

## The call of the wilderness.

You hear it. Maybe it started from far away at first, but now it's getting louder, more persistent. It's the voice that's nudging you toward new experiences — daring you to rekindle your spirit of adventure — telling you that now's the time to live the life you've always dreamed about. And for all who hear it, Safari has a motorcoach just for you.

You see, the passion for adventure is at the heart of every coach we build. You feel it in the powerful performance of our big Caterpillar® engine and exclusive Roadmaster chassis. You find it in dozens of high-tech features and innovations. And you experience it in the unmatched livability of our plush, stylish interiors. Yes, these are just some of the things that make adventures in a Safari so alluring. And once you've heard the call, you'll know it's time to take a closer look.

Welcome to the 2004 Panther by Safari.





## The Safari Pride



There's more to owning a Safari motorcoach than just driving. There's also the fun and camaraderie that comes from sharing your adventures with other Safari owners. Because, like you, they know life is to enjoy. And best of all, no matter where you go, you're part of the Safari family. So, sit back and let the good times roll.







*Panther shown in Antique Treasure.*



**You're not  
afraid to bend our ear.  
We're not afraid  
to listen.**

The 2004 Panther is a product of years of listening to our owners, taking their suggestions, and understanding the things that contribute to a superior RV experience. Above, you can see a few of the things that make the coach special, including laminated gel coat fiberglass sidewalls, insulated aluminum baggage doors with power locks, and deluxe full-body paint.



You'll love the security and convenience of this new keyless entry system with pocket remote control. And this doorbell is a standard feature we've included for the convenience of you and your guests.





Slip behind the wheel and you'll be comfortably in control, thanks to the automotive style dash and lighted VIP Smartwheel®. A few of the exciting optional features this year include a GPS system, an in-dash 6-disc CD player, and the Sirius satellite radio system (requires subscription). The exciting OnStar® mobile assistance system is also an option, giving you access to driving directions, emergency roadside assistance, and a wide range of personalized information — 24 hours a day, 365 days a year.

- It's easy to find the switch you need, because they're all conveniently grouped to the left of the steering wheel.
- The air dump switch aids in leveling and helps you get the coach closer to the ground for easier entry and exit.
- The Panther features ICC flasher lights, located topside.
- Heated side mirrors offer full visibility in all weather conditions.
- Stopping to enjoy the scenery is never a problem with Safari's automatic power gear, a 3-point hydraulic leveling system that keeps your coach level, no matter what the terrain.



This monitor displays both the color rear vision system and the Aladdin video coach system, allowing you to easily check fluid levels and tank capacities and track important trip information.



*It's all about you.*  
**COME ON IN.**







## Pure luxury.

From end to end, the Panther will astound you with its luxurious comfort and stylish attention to detail. This year, you have your choice of four beautiful interior color schemes, each with exquisite color-coordinated fabrics, carpeting and window treatments. The cabinetry comes in alder finish as well as six optional styles and features solid wood square raised panel doors with hidden hinges. Crown molding, sculptured carpet and wallpaper add elegant touches, and you'll enjoy meals at our adjustable legless solid surface dinette.



  
**PANTHER**04

*Take all the  
room you want.*





*Panther 4213 shown in Antique Treasure with Natural Cherry cabinetry.*

Enhance the luxury of your coach with this optional Euro recliner and ottoman in our amazing Ultraleather™ covering. Plush Ultraleather™ is specially designed to stand up to all the wear and tear of life on the road.





*Panther 4213 shown with Natural Cherry cabinetry.*



Whether you're the chef or just the dishwasher, this galley is a dream come true. You'll love the style and convenience of the solid surface countertop with backsplash and integrated sink. Top-of-the-line appliances include a versatile convection microwave with a recessed high-output cooktop on the counter below, complete with flush-mount covers. A four-door refrigerator with ice maker and raised panel doors is also standard. And the optional Insta-Hot® system makes an excellent choice, providing hot water on demand and helping to conserve water.



You'll find a roomy storage area under the sink, with a built-in space for the sink and range covers.





In the bedroom, you're greeted by plenty of charm as well as ample storage space — all in the same beautiful hardwood cabinetry found throughout the rest of the coach. A queen bed comes standard with beautiful bedspread as well as coordinated pillows, and you may choose the option of a king bed. Another standard feature is the oversized rear wardrobe closet with mirrors. Other highlights include solid surface tops, decorative lighting and blackout shades. And the 20" flat screen stereo TV is tucked neatly into a built-in cabinet.



The vanity features the sleek styling of a solid surface countertop with integrated sink, as well as a mirrored medicine cabinet for all your essentials.



You'll be amazed at all the extra space added by Panther's two slide-outs — one for the bed and the one shown here, with dresser, cabinets and TV. And you'll love the elegant sophistication provided by the beautiful detailing of the hardwood slide-out fascia.





## Showing our colors.

Our designers have created exquisite color combinations for your 2004 Panther. Now you get to choose the one that's right for you.



ANTIQUE TREASURE



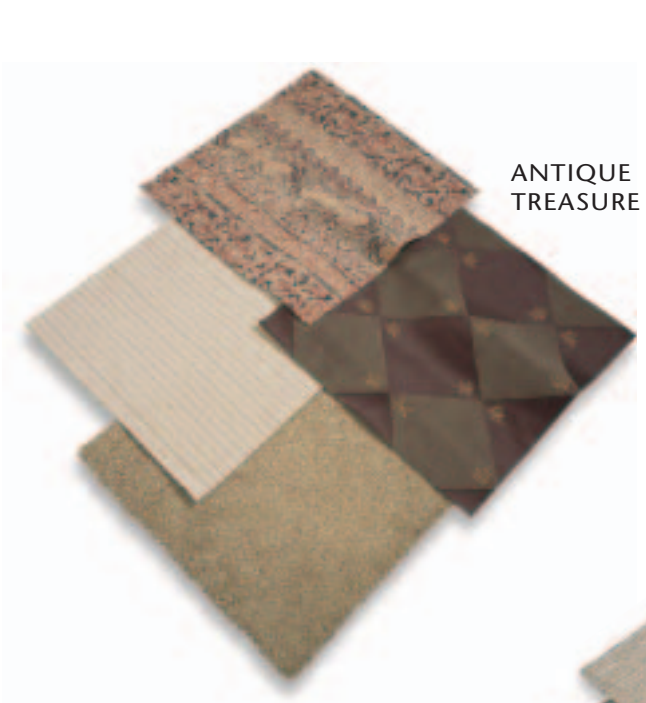
SATINWOOD BEIGE



SILVER SPRUCE



TAUPESTONE



ANTIQUE  
TREASURE



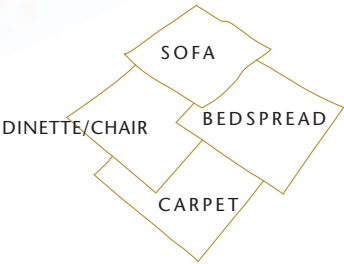
SATINWOOD  
BEIGE



TAUPESTONE



SILVER  
SPRUCE



BETTER  
STAIN  
PROTECTION

Manufactured in, not added on. 3M Scotchgard™ Carpet Stain Release is applied during the carpet manufacturing process for a higher level of protection. Dupont Teflon® soil repellent is applied to virtually all upholstery fabric during the finishing process for superior coverage.\*

\*Brand and application of carpet or upholstery fabric protection may vary depending on date recreational vehicle was manufactured.

NATURAL CHERRY

WALNUT

NATURAL OAK



STAINED CHERRY



NATURAL MAPLE



STAINED OAK



ALDER



## Engine mounting:

The chassis features a three-point engine mounting system, reducing vibrations in the coach and allowing for easier servicing by simply lowering the engine through the bottom of the coach.



## Basement structure rust inhibitor:

For greater strength, and to prevent corrosion, the basement storage area is constructed with pre-primed steel and coated with rust-inhibiting paint.



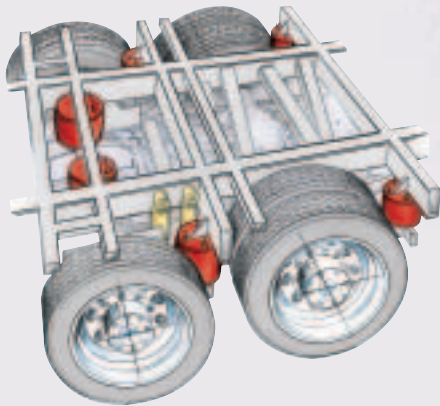
**S-Series Chassis**



- 10,000 lb. hitch receiver offers powerful towing capacity.
- Unique six-degree rear axle tilt perfectly aligns the engine, transmission and differential, minimizing stress on the drive-train and reducing noise in the coach.
- Two stage Jake brake system assures you of safely traveling steep grades while 6-wheel anti-lock brakes with disc brakes in front help you maintain control in severe road conditions.
- Automatic Traction Control (ATC) eliminates wheel slippage in slick conditions and heightens control.
- P295/80R Goodyear steel belted all season tires ensure a safe and quiet ride.
- The semi-monocoque design, with trussed superstructure, distributes stress evenly throughout the entire chassis and adds strength to sidewalls and bays.
- Full length frame rails fabricated of 3" by 8" by 1/4" 60,000 PSI structural steel; rails are spaced 44" on center for a wider stance and unmatched strength.
- The power steering box allows for a 50-degree front wheel turn angle in both directions for better maneuverability and returns the steering wheel back to its center position to eliminate driver fatigue.
- All chassis are equipped with steel cage construction and steel firewall for added safety.

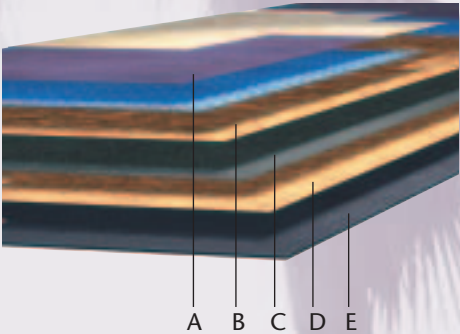
## Air bags and shocks:

The coach's cushion air glide suspension system features 10 air bags and 10 shock absorbers, providing superior stability and handling and the smoothest ride you'll find anywhere.



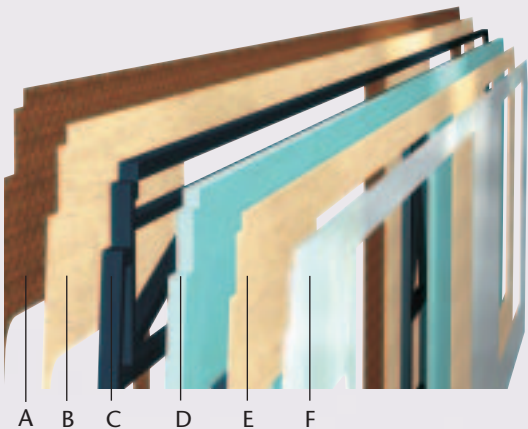
### 5-Layer Floor:

- A 1/2" plywood and tile, or 1/2" carpet pad and carpeting
- B 1/2" Oriented Strand Board (OSB)
- C Decibel paper
- D 1/2" Oriented Strand Board (OSB)
- E Waterproof Darco underbelly



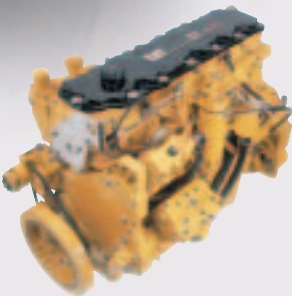
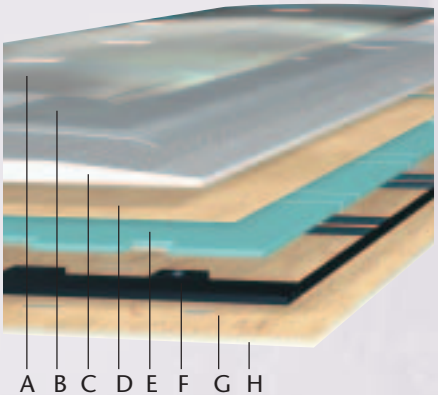
### 6-Layer Exterior Wall:

- A Gel coat fiberglass outer wall
- B Luaun paneling
- C Heavy-gauge tubular steel and 4" steel plate backers
- D R 7.5 closed cel foam seals every nook and crevice
- E Luaun paneling; walls are Vac-u-Bonded together
- F Decorative wall coverings



### Roof Layers:

- A One-piece 1/4" thick fiberglass roof, crowned for water run-off and seamlessly joined with front and rear end caps
- B Vapor barrier
- C 3" tapered beadfoam supports the crowned roof; the center tunnel houses wiring and air conditioner ducts
- D Luaun
- E Foam insulation
- F Tubular steel framework
- G Luaun and vinyl paneling are Vac-u-Bonded
- H Sound-absorbing, easy-to-clean padded vinyl interior headliner



You'll have plenty of power to spare, thanks to the Caterpillar® 505 HP engine with Allison® 4000 MH 6-speed electronic transmission.



## The perfect finish.

Safari coaches are painted in our own state-of-the-art facility using a multi-step paint process to help lengthen the life of your motorhome's exterior. The process includes sanding, application of sealer and base coat, hand-applied graphics, spray painting, and three applications of clear coat.





**This cat makes a  
powerful impression.**

On the road, there's no mistaking the Panther with its striking exterior and eye-catching details, including molded fiberglass cap with integrated bumper, one-piece windshield, halogen fog lamps, and roof-mounted dual-trumpet air horns.

From coast to coast, Safari coaches are recognized by our distinctive optional wildlife murals. Each mural is hand-painted by Dame family craftsmen, and you have your choice of hundreds of designs. Or if you prefer, custom designs are also available.



Weight Rating (Lbs.)	4013	4213
Gross Vehicle	47,600	47,600
Gross Combined	57,600	57,600
Gross Axle (Front)	14,600	14,600
Gross Axle (Rear)	23,000	23,000
Tag Axle	10,000	10,000
Measurements		
Wheelbase	254"	266"
Overall Length	40' 10"	41' 10"
Height (with A/C)	11' 11"	11' 11"
Interior Height	79"	79"
Interior Width	96"	96"
Exterior Width	100.5"	100.5"
Tank Capacities* (Gal.)		
Water Heater	10	10
Gray Tank	56	56
Black Tank	60	60
Fresh Tank	100	100
LP Tank**	39	39
Fuel Tank	130	130

Due to the large variety of options and floorplan arrangements available to our customers, actual weights for each unit can differ significantly. Safari provides a weight sticker on each unit we produce which includes that unit's tank capacities and approximate weight. Consult your local Safari dealer for unit availability and further information. The information printed in this brochure reflects product design, fabrication, and component parts at the date of printing. The manufacturer reserves the right, at any time, to make changes in product design or material or component specifications as its sole option, without notice. This includes the substitution of components of a different brand or trade name, which will result in comparable performance. All information printed in this brochure is subject to change after the date of printing. Some features shown or mentioned in this brochure are optional and may only be available in selected floorplans. Photographs may show props or decorations that are not standard equipment on Safari models. Safari, the Safari logo and its design, are registered trademarks. All other products and company names are trademarks and/or registered trademarks of their respective holders.

While the color of the motorhome's exterior and the interior fabrics depicted in this sales brochure are fair and reasonable depictions, the colors depicted may not be an exact match of the actual colors because of the variances in photo-processing and variances caused by inserting the photographs within the sales brochure. Due to product improvements, changes during the model year and/or transcription errors that may occur, information represented within this brochure may not be accurate at the time of your purchase. If certain information is significant to your purchasing decision, please confirm the information with your dealer prior to submitting your order.

The actual overall length of the recreational vehicle may differ from that indicated in the brochure due to variances in the manufacturing process and/or installed components. The actual length may be greater or less than indicated.

\* All tank capacities are estimated based upon calculations provided by the tank manufacturers and represent approximate capacities. The actual "usable capacity" may be greater or less than the estimated capacities based upon fabrication and installation of the tanks.

\*\* Actual filled LP capacity is 80% of listing due to safety shut-off required on tank.

40-foot — 42-foot

Floorplans for the way you live.

With the 2004 Panther, you can choose from two great floorplans. Both offer innovative design features and plenty of space, as well as many attractive options. Like our king-size bed, wrap-around computer table, and fully automatic digital satellite system. All you have to do is decide which floorplan and options best suit your needs.





BODY CONSTRUCTION

Standard Features

Heavy Duty Steel Superstructure  
Steel Cage Cockpit Construction  
Seamless One-Piece Molded  
Crowned Fiberglass Roof  
All Season Foam Insulated Roof  
Laminated Gel Coat Fiberglass  
Sidewalls  
One-Piece Front and Rear Molded  
Fiberglass Caps  
Integrated Fiberglass Front and  
Rear Bumpers  
One-Piece Windshield  
Triple-Head Power Controlled  
Heated Exterior Mirrors with  
Turn Indicator Lights  
Halogen Fog Lamps  
Roof-Mounted Dual-Trumpet  
Air Horns  
One-Piece Generator Access Door  
Double Side Swing Engine  
Access Doors  
Insulated Aluminum Baggage  
Doors with Power Locks  
Ozite-Lined Pass-Through Storage  
Compartments  
Steel-Framed Floor  
Two-Layer Flooring  
Full-Length Safari Mud Flap  
Deluxe Full-Body Paint

Options

3M® Film Front Mask  
Storage Bay Slide-Out Tray  
(One Side)  
Storage Bay Slide-Out Tray  
(Pass-Through)  
Mural  
Rear Ladder

COCKPIT

Standard Features

Fiberglass Automotive Dash with  
Beige Instrumentation Panel  
Tan Gauges with Black Lettering  
and Gun Metal Bezels  
In-Dash AM/FM Stereo Cassette  
and CD Player  
Color Rear Vision Monitor  
with Audio  
CB Radio with Antenna  
Lighted VIP Smartwheel® with  
Controls for Windshield Wipers,  
ICC and Cruise Control  
Power Steering  
Pantographic Windshield Wipers  
Cruise Control Light on Dash  
Audible Turn Signals  
Low Coolant Warning Light  
and Buzzer  
Ultraleather™ 6-Way Power  
Pilot and Co-Pilot Seats with  
Embossed Leather Inserts and  
Power Footrest on Co-Pilot Seat  
Docking Lights  
Pilot and Co-Pilot Cup Holders

Recessed Slide-Out Dash  
Workstation  
Power Sunvisors  
Pilot and Co-Pilot  
Pull-Down Sun Shade  
Co-Pilot Overhead  
Ventilation Blowers  
Adjustable Accelerator and  
Brake Pedals  
110V, 12V, and Phone Outlets  
Pilot and Co-Pilot Carpet  
Floor Mats  
Entry Step Storage  
Aladdin Video Coach System

Options

Extra Wide Co-Pilot Seat with  
Power Footrest  
GPS Navigation System with  
Separate Monitor  
In-Dash AM/FM 6-Disc CD Player  
Sirius Satellite Radio System w/FM  
Modulator (Requires Subscription)  
Digital/Analog Cellular Antenna  
and Wiring  
OnStar® Mobile Assistance  
Electronic Privacy Drape

APPLIANCES AND  
ACCESSORIES

Standard Features

Four-Door Refrigerator with  
Ice Maker and Raised  
Panel Doors  
Recessed High-Output  
Cooktop with Three Burners  
and Flush-Mount Cover  
Spacesaver Convection  
Microwave with Touch Control  
TV Antenna with Booster  
Digital Satellite System Prep  
27-Inch Flat Screen Color  
Stereo TV with Remote  
Control in Living Area  
20-Inch Flat Screen Color  
Stereo TV with Remote  
Control in Bedroom  
Home Theater System  
with DVD Player  
Universal Remote System  
Stereo VCR with Remote Control  
and Video Switching Box  
Cable TV Hook-Up and  
Telephone Jacks  
Washer/Dryer Prep

Options

42-Inch Plasma TV in  
Entertainment Center  
Combination Washer/Dryer  
Fully Automatic Digital  
Satellite System  
Storage Bay Freezer with  
Storage Tray

INTERIOR

Standard Features

Alder Cabinetry  
Solid Wood Square Raised Panel  
Doors with Hidden Hinges  
Carpet-Lined Cabinet Shelves  
Crown Molding  
Built-In Wood Pull-Out Trays under  
Range Area (4013)  
Low-Friction Roller Drawer Guides  
Padded Vinyl Ceiling  
Solid Surface Kitchen Countertop  
with Integrated Sink and Two  
Sink Covers  
Solid Surface Bathroom Countertop  
with Integrated Sink  
Day/Night Pleated Shades in  
Living Area and Blackout  
Shades in Bedroom  
Mini-Blinds in Kitchen  
and Bathroom  
Wallpaper Throughout  
Solid Surface Cutting Board  
Sculptured Carpeting in Living Area  
Designer Carpeting in Bedroom  
Ceramic Tile in Bathroom  
and Kitchen  
Oversized Rear Wardrobe Closet  
with Mirrors  
Medicine Cabinet  
Bathroom Mirror  
Towel Bars in Bathroom  
Raised Panel Bathroom Door  
Bedspread and Pillows  
Nightstands with Solid Surface  
Countertops  
Hinged Wood Manual Step Cover

Options

Decors: Antique Treasure, Satinwood  
Beige, Silver Spruce, Taupestone  
Stained Oak Cabinetry  
Natural Oak Cabinetry  
Walnut Cabinetry  
Stained Cherry Cabinetry  
Natural Cherry Cabinetry  
Natural Maple Cabinetry  
Plank Flooring

FURNITURE

Standard Features

Legless Side-Slide Solid Surface Dinette  
Table with Two Dinette Chairs  
and Two Folding Chairs  
Wall Dinette Cabinets with Solid  
Surface Top  
Queen Bed  
Bedroom Dresser with Solid  
Surface Top  
Sleeper Sofa with Drawer  
Fabric Swivel Recliner  
Lamp Table

Options

Wrap-Around Computer Table  
Booth Dinette (N/A: 4213)  
Ultraleather™ Recliner  
Ultraleather™ Euro Recliner  
Ultraleather™ J-Lounge with Drawer

Ultraleather™ Sleeper/Sofa  
with Drawer  
King Bed

**ELECTRICAL SYSTEMS  
AND LIGHTS**

**Standard Features**

50 Amp 120V Distribution  
Panel and Power Cord with  
Quick Disconnect  
Onan® 7.5 kW QD Diesel Generator  
on Power Slide-Out with  
Auxiliary Start Switch (4013)  
Onan® 10 kW QD Diesel Generator  
on Power Slide-Out with  
Auxiliary Start Switch (N/A: 4013)  
RC 7GS Panel with 2,000  
Watt Inverter  
Automatic Temperature  
Generator Start  
Electrical Panel Front Roadside  
Compartment  
Four 6V House Batteries  
Two 31D 12V Chassis Batteries  
Locking Battery Disconnect Switch  
inside Coach  
Battery Maintainer  
Porch Light  
Door Bell  
Pilot and Co-Pilot Map Lights  
Courtesy Lights in  
Entry and Bedroom  
Water Pump Switch in Galley,  
Bathroom, and Service Bay  
Lights in Outside  
Storage Compartment  
120V Receptacles in Outside  
Storage Compartment  
Fluorescent Lighting  
in Bathroom and Kitchen  
Halogen Lighting in Living Area  
Decorative Dining Light  
Rope Lighting under Kitchen  
and Bathroom Toe Kicks  
Cosmetic Vanity Lights  
in Bathroom  
Lighted Utility Center  
(Telephone, Cable TV, Water,  
Electric Hook-Ups)  
Decorative Wall Lights in Bedroom  
Decorative Wall Lights in  
Living Area

**Options**

Solar Panel  
Power Cord Reel  
Surge Protector  
Four Additional House Batteries  
(Required w/42" Plasma TV Option)

**PLUMBING AND  
LP SYSTEMS**

**Standard Features**

Manabloc Water System  
for Entire Coach  
10 Gallon LP Gas/Electric  
Water Heater with  
Electronic Ignition (DSI)

Water Pump  
Winterization Valving System  
Water Heater Bypass Valve  
Central Water Purifier in  
Service Compartment  
Granicoat Shower  
Glass Shower Door with  
Brass Frame  
Single-Lever Shower Faucet with  
Shut-Off Valve  
China Opus Toilet  
No-Fuss Flush Black Holding Tank  
Rinsing System  
Insulated Systems Compartment  
with Easy Access to Hook-Up  
Outside Shower with Hot and  
Cold Water  
Gravity and Pressurized Water Fill  
Service Bay Faucet

**Options**

Insta-Hot® Water System  
Bath Tub  
Power Water Hose Reel

**HEATING, VENTS, AND  
AIR CONDITIONING**

**Standard Features**

Two Low-Profile 13.5M BTU  
Roof Air Conditioners with  
Ducted Air and Wall Thermostat  
with Heat Pumps (Three on  
42' Model)  
42M BTU Electronic Ignition  
Furnace  
Electronic AC/Heat Climate  
Control System  
12V Attic Fan with Wall Thermostat  
in Kitchen  
12V Attic Fan in Bathroom and  
Private Lav

**Options**

Aqua-Hot® Heating System (ILO  
Furnace and Water Heater)

**WINDOWS, DOORS,  
AND AWNINGS**

**Standard Features**

Radius Dual Pane Safety Glass  
Dark Tinted Slider Windows  
Side Door Entry  
Keyless Remote Entry System  
with Pocket Remote  
Power Entrance Step  
Tinted Skylight in Bathroom  
Carefree® Automatic Patio  
Awning with Color  
Coordinated Hardware  
Topper Slide-Out Awnings  
Window Awnings

**Options**

Girard® Automatic  
Patio Awning

**SAFETY**

**Standard Features**

Back-Up Alarm  
Fire Extinguisher  
Deadbolt Lock on  
Entrance Door  
Lighted Interior and Exterior  
Grab Handles  
120V GFI Protected Circuit  
(Kitchen, Bathroom, Exterior)  
LP Gas Detector  
Smoke Detector  
Carbon Monoxide Detector  
Integrated Pilot and Co-Pilot  
3-Point Seat Belts  
(Lap and Shoulder)  
Third Brake Safety Light  
Egress Window

**Options**

Security Safe  
Deluxe Security System

**CHASSIS/ENGINE/  
SUSPENSION**

**Standard Features**

Roadmaster S-Series  
CAT® 6C 505 HP C-12 Engine  
with Allison® 4000 MH  
6-Speed World Transmission  
and Electronic Shifter  
Torque: 1,550 lbs./ft. Max. Net  
at 1,200 RPM  
Rear Axle Ratio: 4.30:1  
Cubic Inch Displacement: 732"  
200 Amp Alternator  
Dual Fuel Fill  
Polished Aluminum Wheels  
Tires: 295/80R/22.5 (H)  
Cushion Air Glide Suspension  
with 10 Air Bags and  
10 Shock Absorbers  
Dual Air Anti-Lock Braking  
System with Front Disc Brakes  
and Rear Drum Brakes  
Tag Axle with Anti-Lock  
Braking System  
Automatic Traction Control  
Jacobs® Engine Brake  
Auto Slack Adjusters  
on Brakes  
Fuel/Water Separator  
Transmission Temperature  
Gauge  
Transmission Oil Cooler  
Air Cleaner Restriction Indicator  
Engine Block Heater with  
Switch on Dash  
Automatic Air Leveling System  
10,000 Lb. Hitch Receiver\*  
and 7-Way Hitch Plug  
Undercoating

**Options**

Hydraulic Leveling System  
Dual Leveling Systems  
(Air/Hydraulic)

\* Your towed vehicle should be equipped with  
auxiliary brakes if the weight of the towed load  
exceeds 1,000 lbs.





# PANTHER04



## Adventures worth sharing.



As a Safari owner, you're entitled to join us throughout the year for rallies designed just for you. You'll meet freedom-loving folks from across the country, all celebrating the adventure of the open road. In addition, you'll enjoy sharing travel information and tips about your coach in our Safari Adventures magazine,

published six times per year. And at [www.safarimotorcoaches.com](http://www.safarimotorcoaches.com), you'll find a world of information online, right at your fingertips.



Safari's "Women's Only" seminars provide the opportunity for us to get the feminine perspective, which helps us continue designing great motorcoaches.



**No matter where you roam,  
the Safari Family Advantage travels with you.**

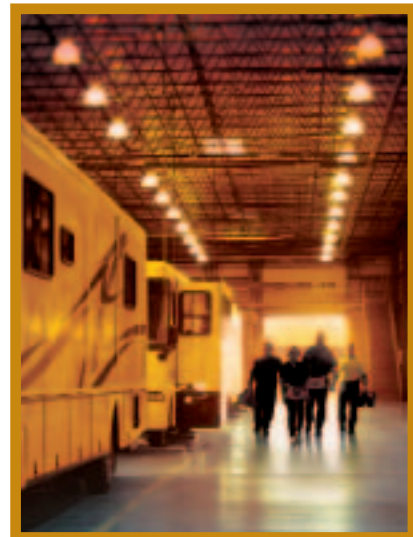
When you purchase a coach from Safari, you become part of an industry-leading family of companies called Monaco Coach Corporation. What does that mean for you? It means you have access to a wider array of benefits. To begin with, your coach is built by a level of expertise that could only be achieved through the teamwork and combined experience of all our companies. Like, for example, such exclusive innovations as the Roadmaster chassis — designed specifically for each individual model of our diesel coaches. You also get the benefit of our White Glove factory



inspection program, for a higher level of quality assurance and added peace of mind. And your dealer will be happy to tell you about our other innovative programs, including our Extended Care service agreements. Of course, once you're on the road, you'll have access to our nationwide network of more



than 350 service facilities, meaning wherever you travel, you're never far from a friend. Ready to roll? In a 2004 Safari, the strength of our entire family is behind you every mile of the way.



**350** | Service  
and growing | Facilities  
Nationwide



## WARRANTIES

**12 MONTH/24,000 MILE**  
basic limited warranty

**5 YEAR/50,000 MILE**  
limited warranty on aluminum or  
steel frame structure of sidewall,  
roof, front and rear cap

**3 YEAR/36,000 MILE**  
limited warranty on  
Roadmaster chassis

See owner's manual for complete details.



**MONACO COACH CORPORATION**